

Invention 8

J. S. Bach (1685–1750)

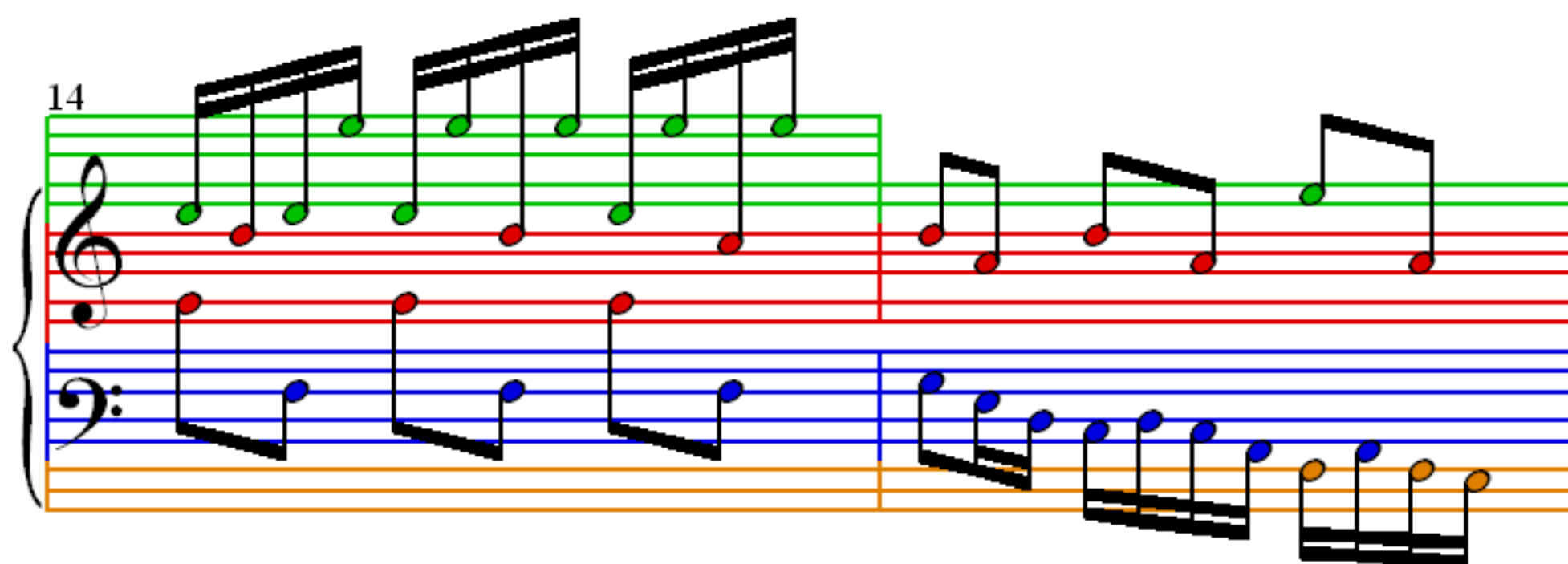
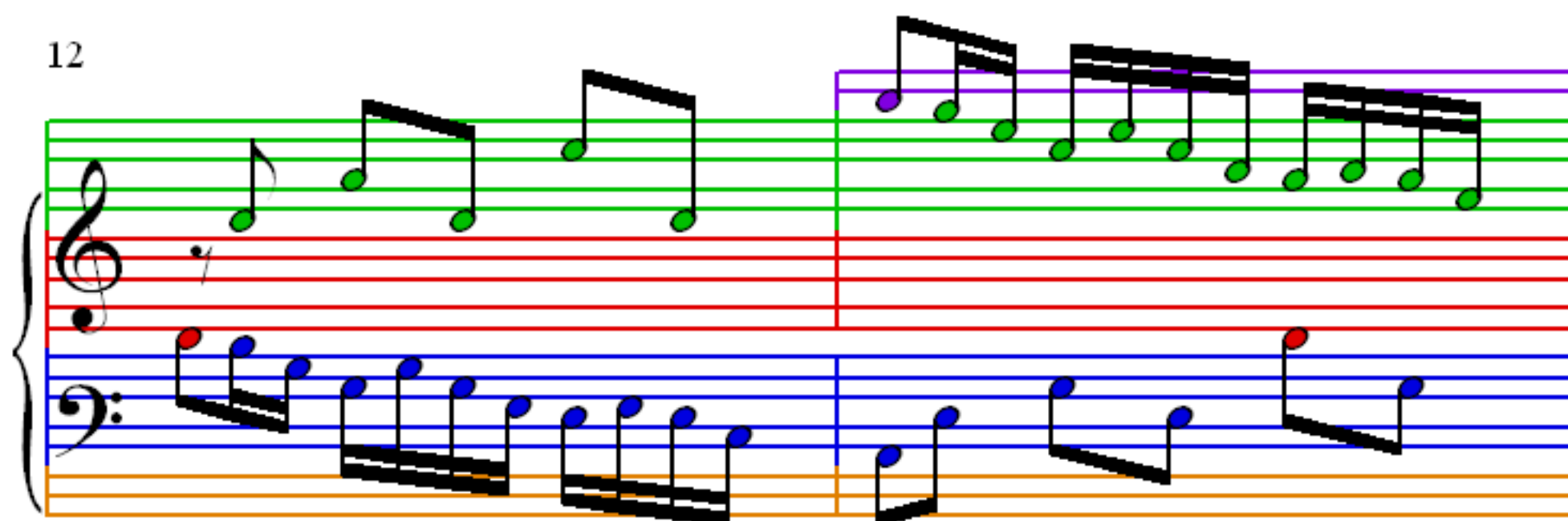
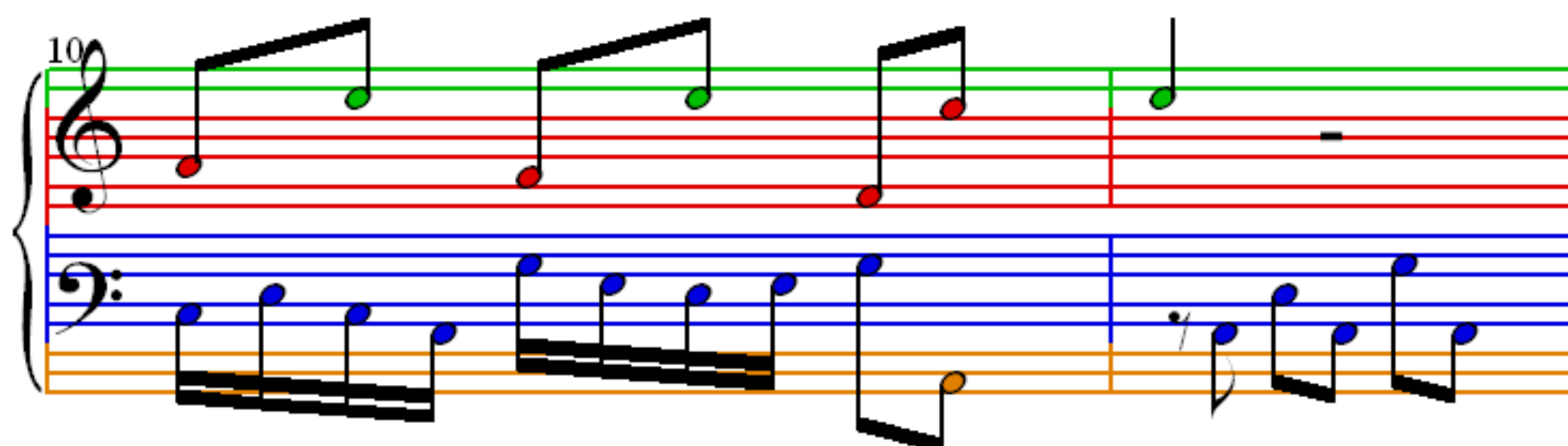
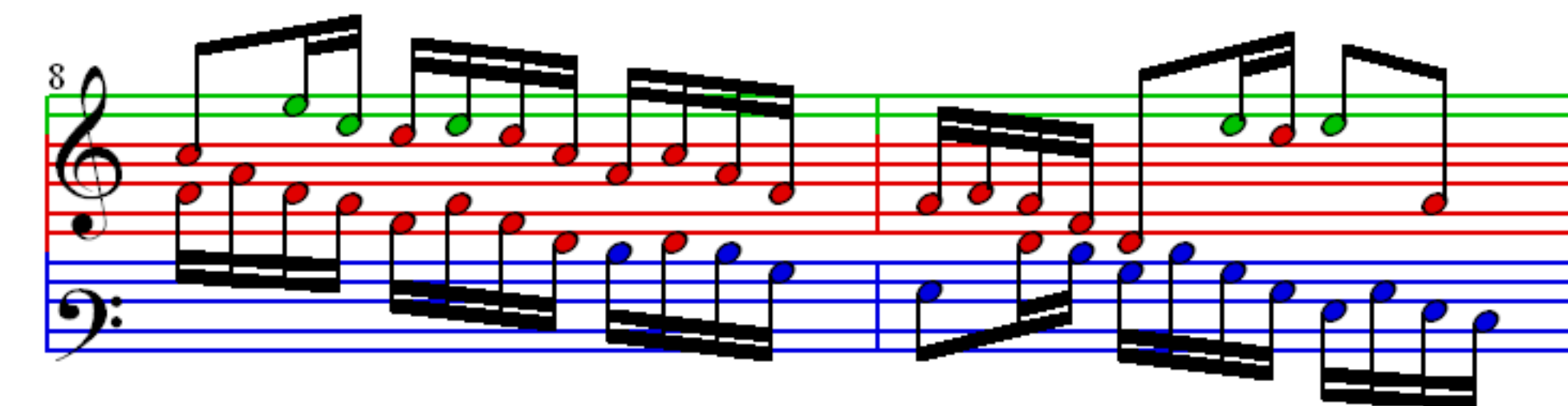
♩ = 90

1

2

4

6



This image displays a musical score for a piece titled "Invention 8". The score is presented in four systems, each containing two staves (treble and bass clef) and a grand staff bracket. The measures are numbered 16, 18, 20, and 22. The notation includes various musical symbols such as notes, rests, and accidentals, with some notes highlighted in green, red, blue, and orange. The score is written in a standard musical notation format, with a key signature of one flat (B-flat) and a time signature of 3/4. The measures are grouped into two-measure phrases, with a repeat sign at the end of each system.

24

Measures 24 and 25 of Invention 8. Measure 24 features a treble staff with a sequence of eighth notes (G4, A4, B4, C5, B4, A4, G4) and a bass staff with a sequence of eighth notes (F3, E3, D3, C3, B2, A2, G2). Measure 25 continues the treble staff with a sequence of eighth notes (G4, A4, B4, C5, B4, A4, G4) and the bass staff with a sequence of eighth notes (F3, E3, D3, C3, B2, A2, G2).

26

Measures 26 and 27 of Invention 8. Measure 26 features a treble staff with a sequence of eighth notes (G4, A4, B4, C5, B4, A4, G4) and a bass staff with a sequence of eighth notes (F3, E3, D3, C3, B2, A2, G2). Measure 27 continues the treble staff with a sequence of eighth notes (G4, A4, B4, C5, B4, A4, G4) and the bass staff with a sequence of eighth notes (F3, E3, D3, C3, B2, A2, G2).

28

Measures 28, 29, and 30 of Invention 8. Measure 28 features a treble staff with a sequence of eighth notes (G4, A4, B4, C5, B4, A4, G4) and a bass staff with a sequence of eighth notes (F3, E3, D3, C3, B2, A2, G2). Measure 29 continues the treble staff with a sequence of eighth notes (G4, A4, B4, C5, B4, A4, G4) and the bass staff with a sequence of eighth notes (F3, E3, D3, C3, B2, A2, G2). Measure 30 continues the treble staff with a sequence of eighth notes (G4, A4, B4, C5, B4, A4, G4) and the bass staff with a sequence of eighth notes (F3, E3, D3, C3, B2, A2, G2).

31

Measures 31 and 32 of Invention 8. Measure 31 features a treble staff with a sequence of eighth notes (G4, A4, B4, C5, B4, A4, G4) and a bass staff with a sequence of eighth notes (F3, E3, D3, C3, B2, A2, G2). Measure 32 continues the treble staff with a sequence of eighth notes (G4, A4, B4, C5, B4, A4, G4) and the bass staff with a sequence of eighth notes (F3, E3, D3, C3, B2, A2, G2).