

The Long and Winding Road

$\bullet = 100$

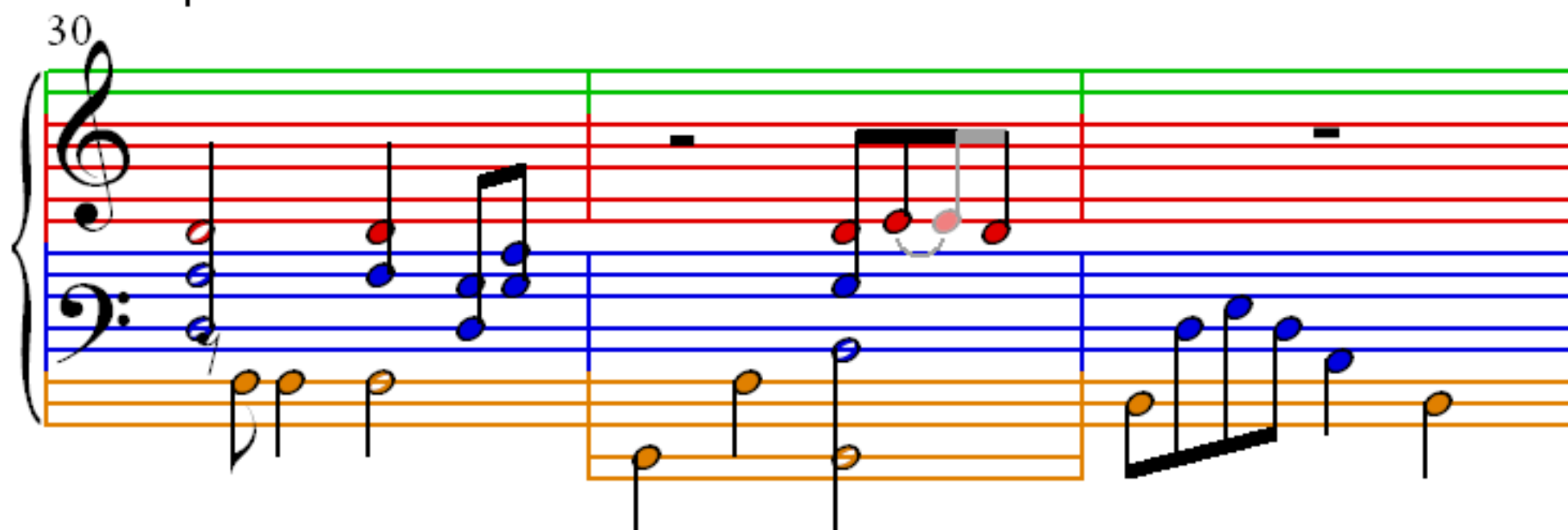
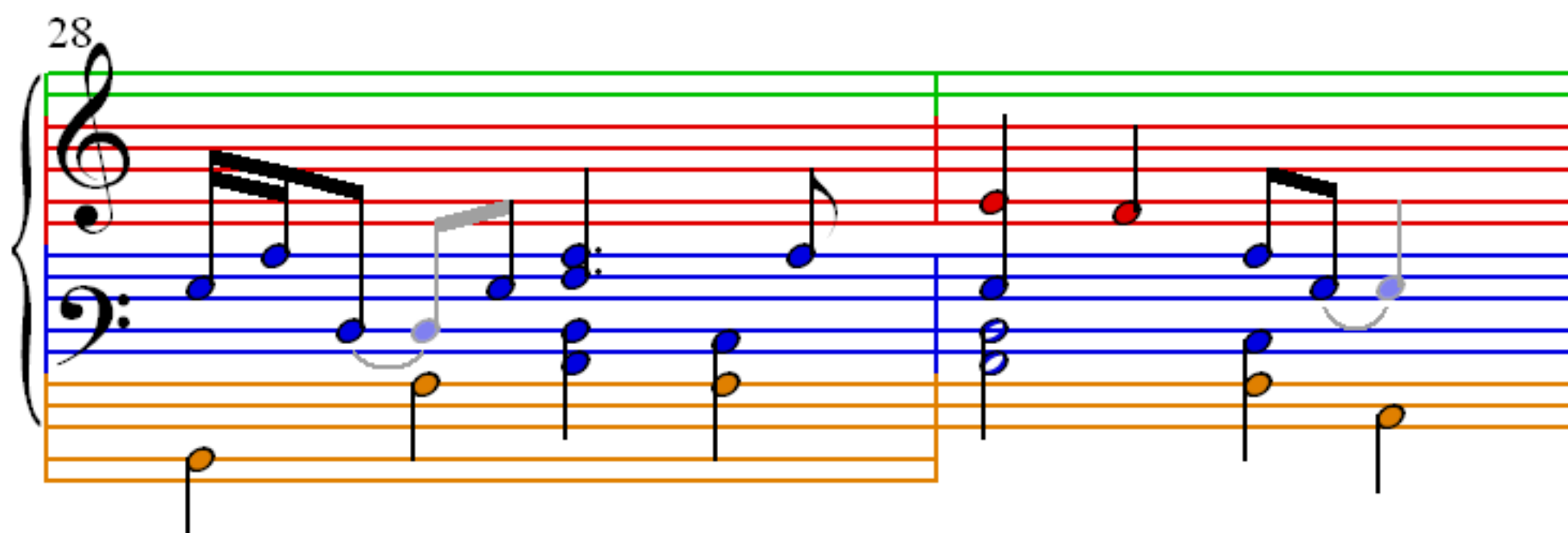
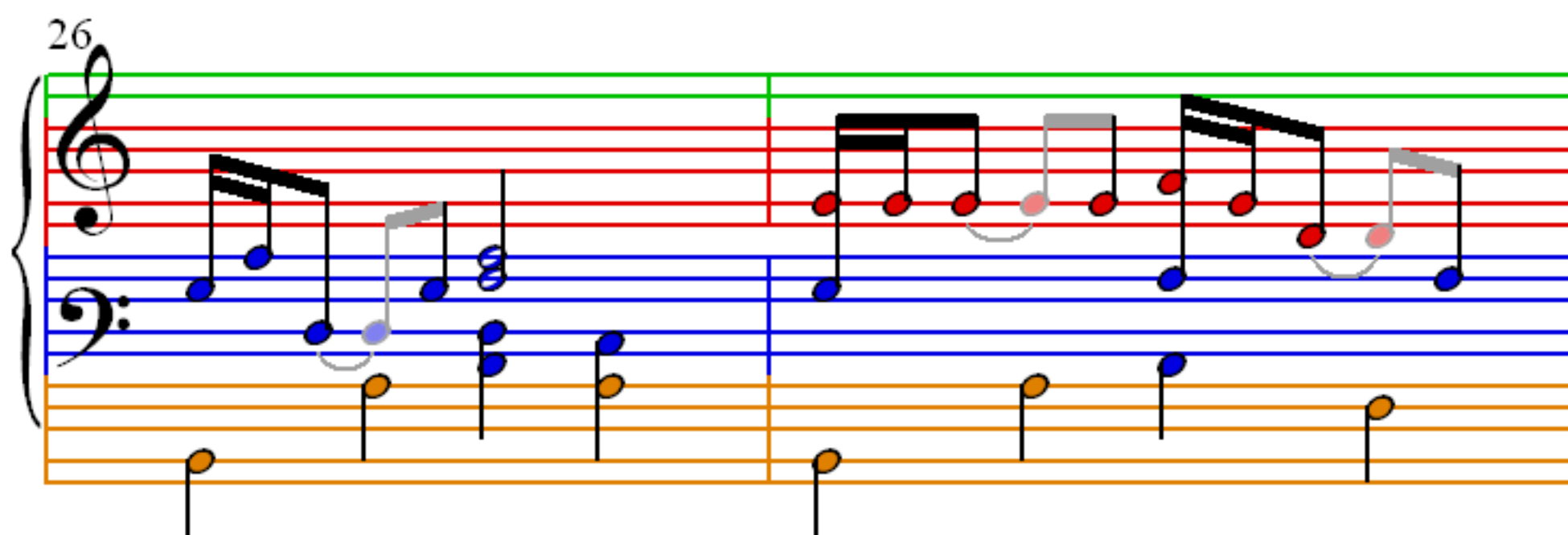
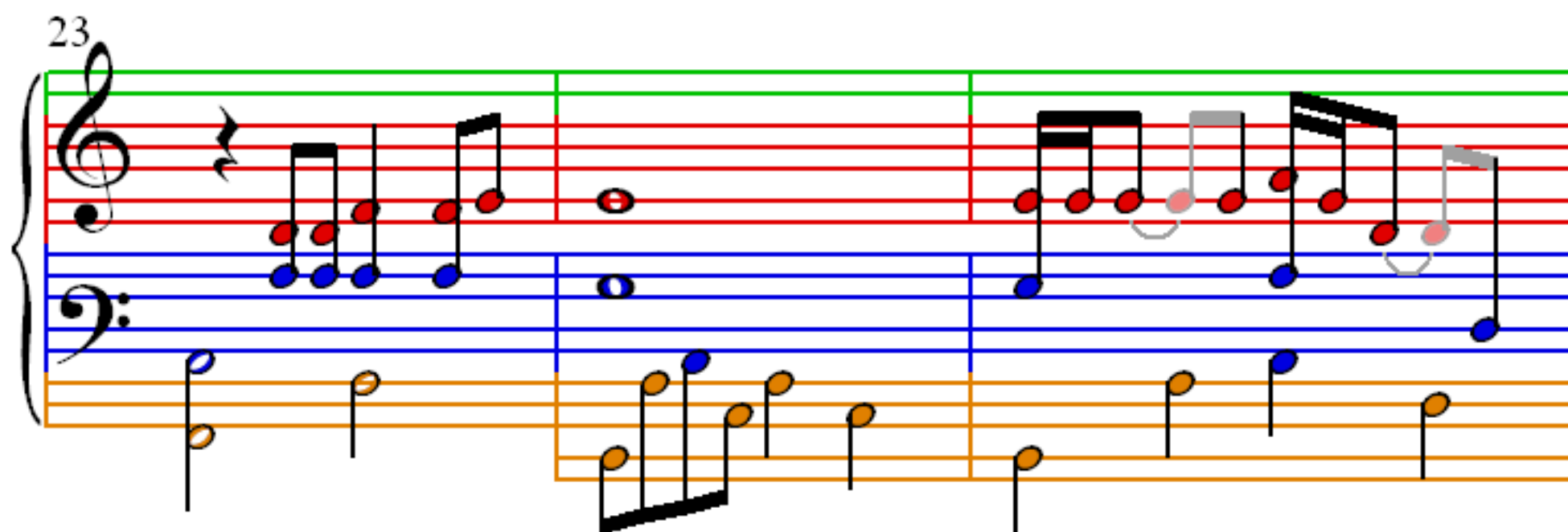
Beatles

4

The image shows a musical score for a piano accompaniment. It consists of two staves: a top staff with a treble clef and a bottom staff with a bass clef. The top staff has a red background, and the bottom staff has a blue background. The music is written in 4/4 time. The top staff contains a vocal line with a treble clef. The bottom staff contains a piano accompaniment with a bass clef. The piano part features a complex rhythmic pattern in the right hand, including eighth and sixteenth notes, and a simpler pattern in the left hand, including quarter and eighth notes. The vocal line is mostly rests, with a few notes in the second and third measures.

[illegible]

19



33

36

39

41