


Everything Is Beautiful

 = 110

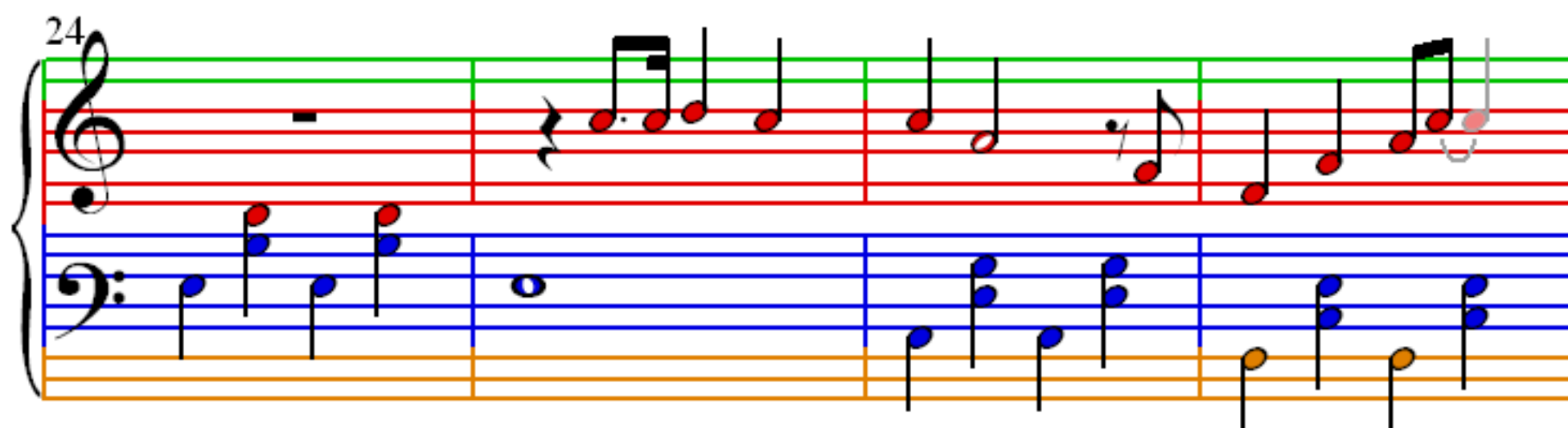
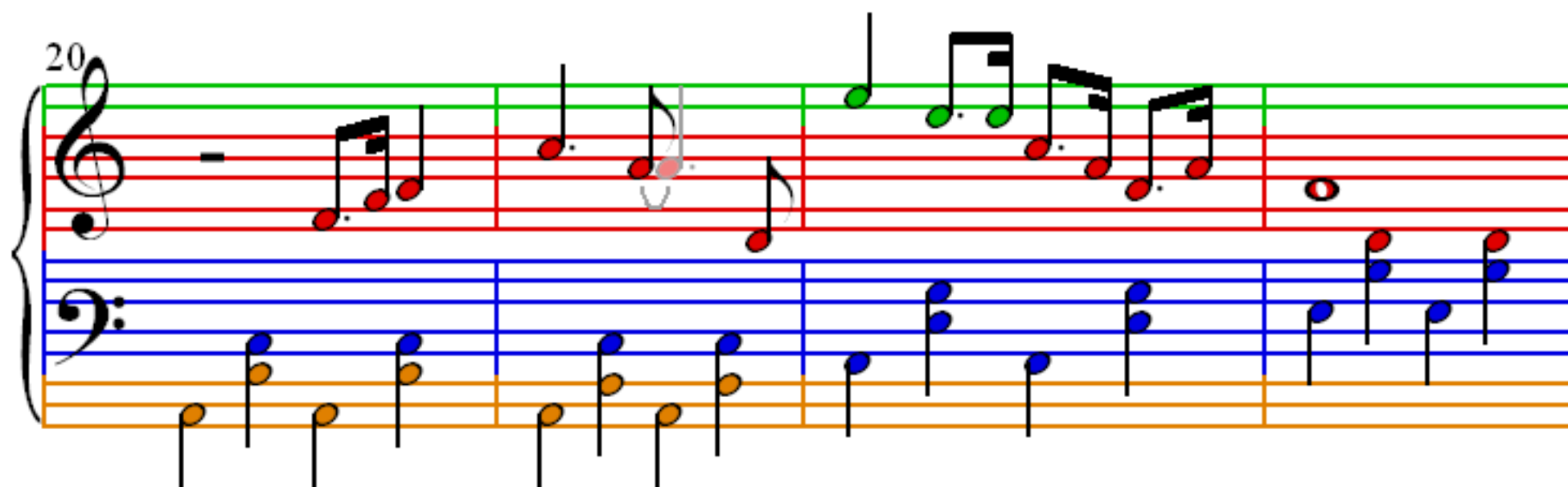
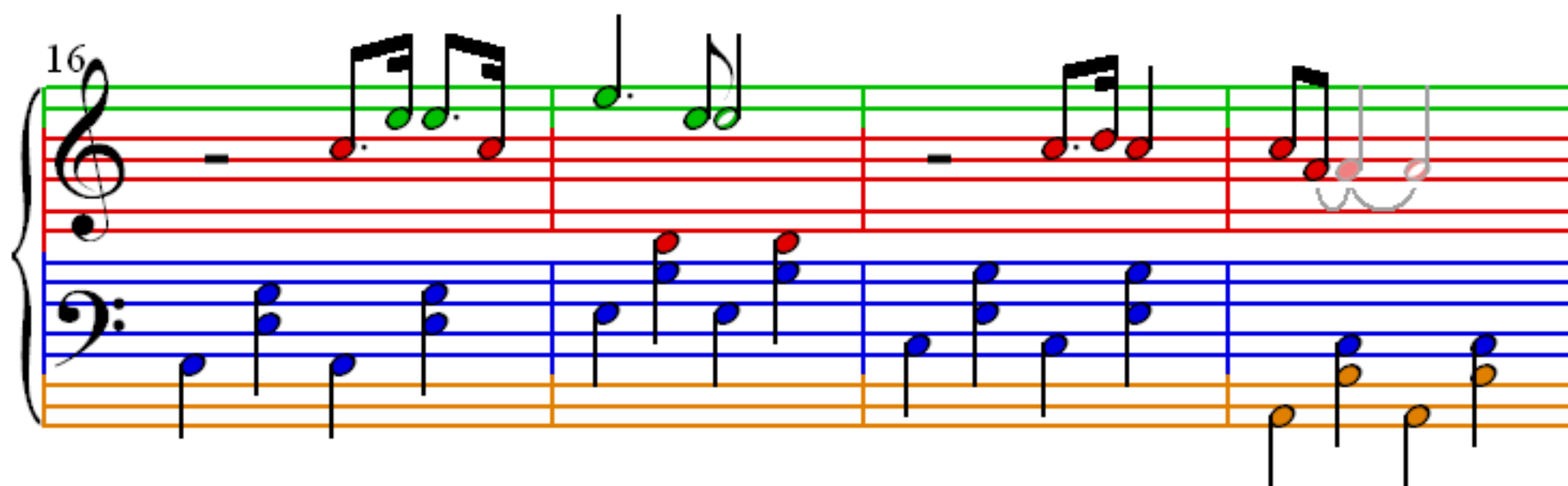
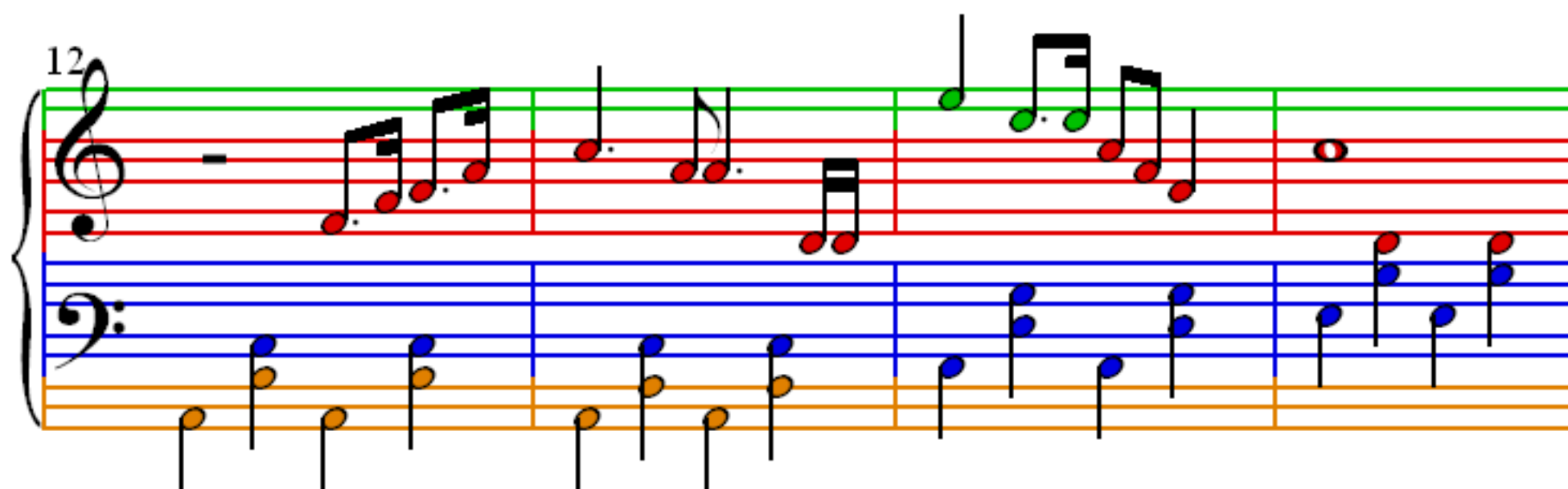
Ray Stevens



1

4

8



28

3

32

3

3

36

40

44

Measures 44-47. Treble clef: Melodic line with a slur over measures 44-45. Bass clef: Steady eighth-note accompaniment. Measure 44 has a grey highlight on the treble staff.

48

Measures 48-51. Treble clef: Melodic line with a slur over measures 48-49. Bass clef: Steady eighth-note accompaniment. Measure 48 has a grey highlight on the treble staff.

52

Measures 52-55. Treble clef: Melodic line with a slur over measures 52-53. Bass clef: Steady eighth-note accompaniment. Measure 52 has a grey highlight on the treble staff.

56

Measures 56-59. Treble clef: Single whole note in measure 56. Bass clef: Steady eighth-note accompaniment. Measure 56 has a grey highlight on the treble staff.