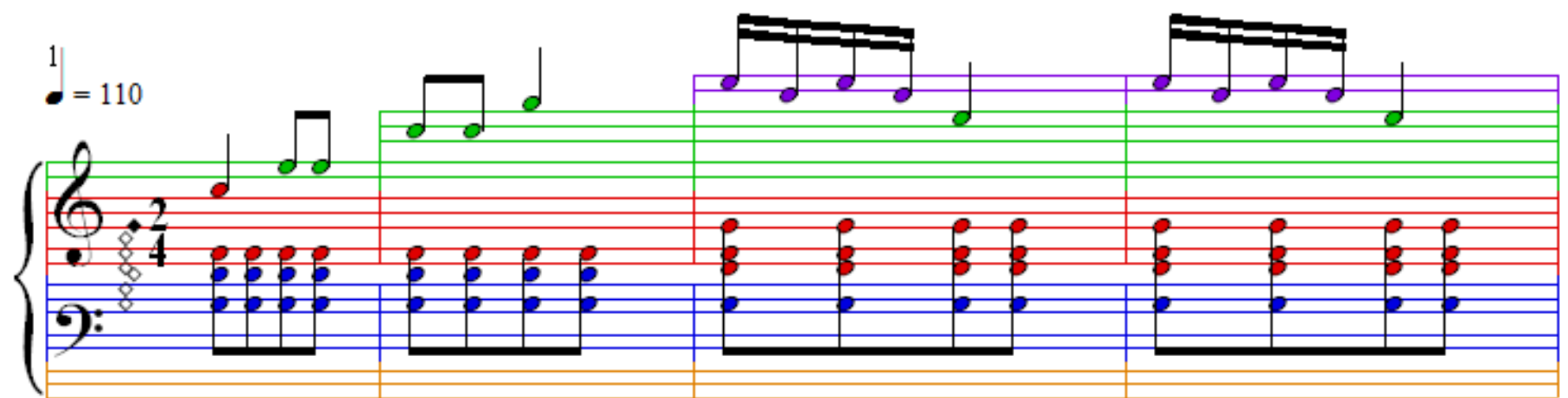


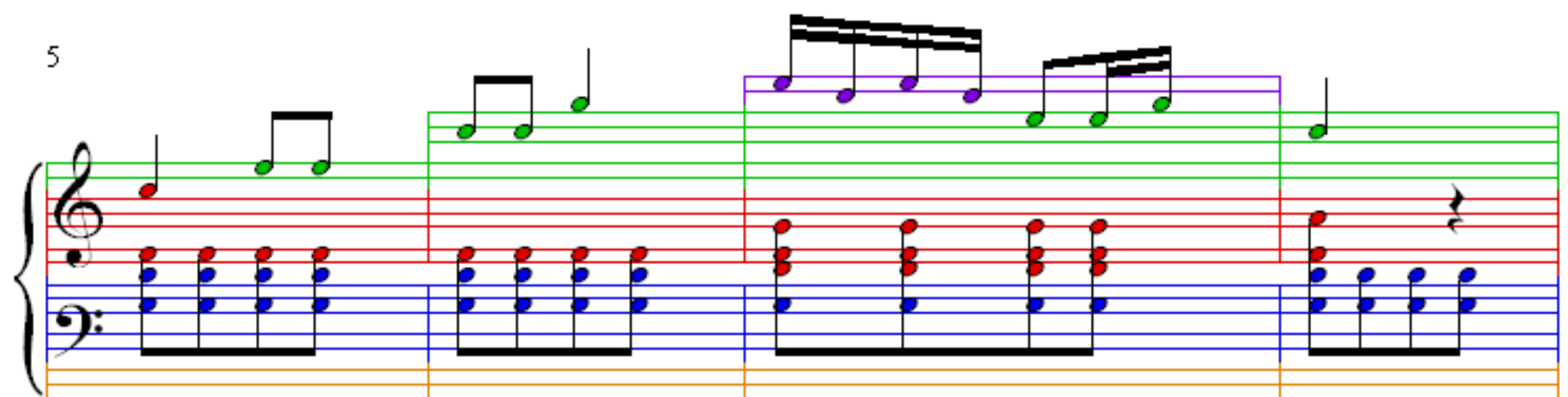
Rondo. Opus 129

Beethoven

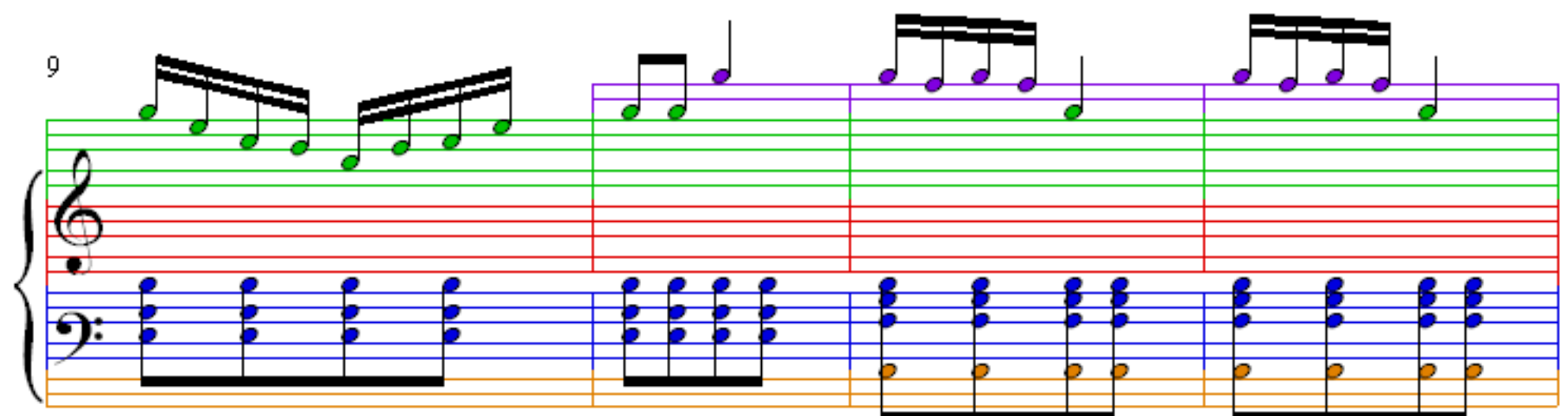
1 $\text{♩} = 110$



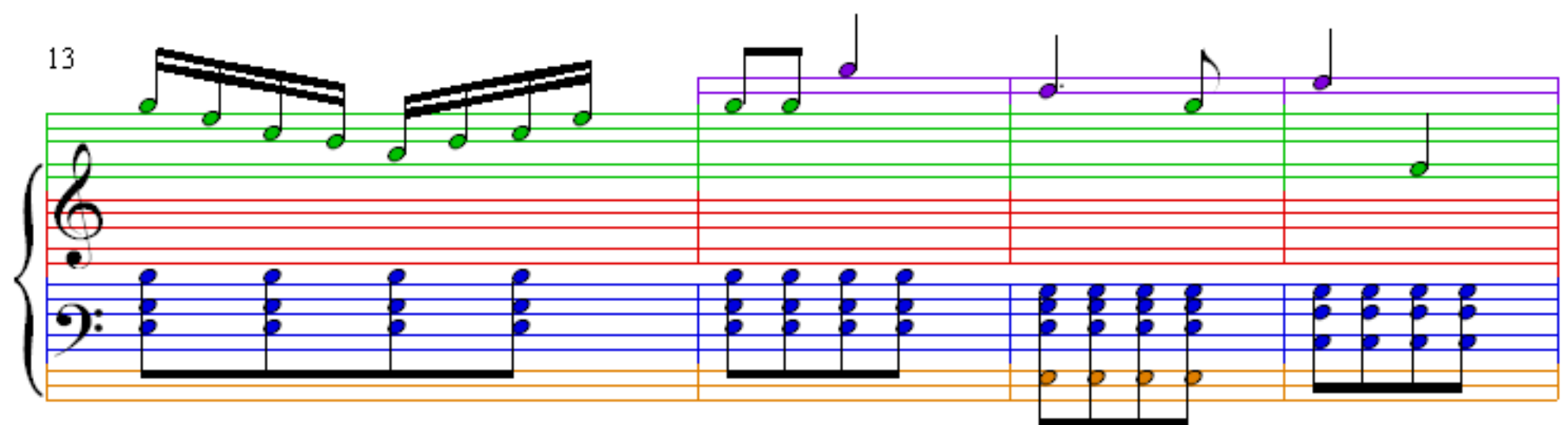
5



9



13



17

21

25

29

33

Measures 33-36: Treble staff (green line, red line) and Bass staff (blue line, red line). The music consists of a sequence of chords and single notes in the treble, with a steady eighth-note accompaniment in the bass.

37

Measures 37-40: Treble staff (green line, red line) and Bass staff (blue line, red line). The music consists of a sequence of chords and single notes in the treble, with a steady eighth-note accompaniment in the bass.

41

Measures 41-44: Treble staff (green line, red line) and Bass staff (blue line, red line). The music consists of a sequence of chords and single notes in the treble, with a steady eighth-note accompaniment in the bass.

45

Measures 45-48: Treble staff (green line, red line) and Bass staff (blue line, red line). The music consists of a sequence of chords and single notes in the treble, with a steady eighth-note accompaniment in the bass.

49

Measures 49-52. The treble clef staff has a red key signature and a green staff line. The bass clef staff has a blue staff line and an orange staff line. The music features a sequence of chords and single notes in the treble and a rhythmic pattern of eighth notes in the bass.

53

Measures 53-56. The treble clef staff has a red key signature and a green staff line. The bass clef staff has a blue staff line and an orange staff line. The music features a sequence of chords and single notes in the treble and a rhythmic pattern of eighth notes in the bass.

57

Measures 57-60. The treble clef staff has a red key signature and a green staff line. The bass clef staff has a blue staff line and an orange staff line. The music features a sequence of chords and single notes in the treble and a rhythmic pattern of eighth notes in the bass.

61

Measures 61-64. The treble clef staff has a red key signature and a green staff line. The bass clef staff has a blue staff line and an orange staff line. The music features a sequence of chords and single notes in the treble and a rhythmic pattern of eighth notes in the bass.

65

69

73

77

81

85

89

93

97

101

105

109

113

Measures 113-116. The treble clef staff contains eighth-note chords and sixteenth-note runs. The bass clef staff contains a steady eighth-note accompaniment. Measure 116 ends with a fermata.

117

Measures 117-120. The treble clef staff continues with eighth-note chords and sixteenth-note runs. The bass clef staff continues with the eighth-note accompaniment. Measure 120 ends with a fermata.

121

Measures 121-124. The treble clef staff features a descending sixteenth-note scale. The bass clef staff features an ascending eighth-note scale. Measure 124 ends with a fermata.

125

Measures 125-128. The treble clef staff features a descending sixteenth-note scale. The bass clef staff features an ascending eighth-note scale. Measure 128 ends with a fermata.

129

Measures 129-132. The treble staff contains chords with green and red notes. The bass staff features blue and orange notes. Slurs connect notes across measures.

133

Measures 133-136. The treble staff contains chords with green and red notes. The bass staff features blue and orange notes. Slurs connect notes across measures.

137

Measures 137-140. The treble staff contains chords with green and red notes. The bass staff features blue and orange notes. Slurs connect notes across measures.

141

Measures 141-144. The treble staff contains chords with green and red notes. The bass staff features blue and orange notes. Slurs connect notes across measures.

145

149

153

157

161

165

169

173

177

181

185

189

193

197

Measures 197-200. The treble clef staff contains green notes, and the bass clef staff contains blue notes. The music features a repeating pattern of eighth notes in the treble and chords in the bass.

201

Measures 201-204. The treble clef staff contains green notes, and the bass clef staff contains blue notes. The music features a repeating pattern of eighth notes in the treble and chords in the bass.

205

Measures 205-208. The treble clef staff contains green notes, and the bass clef staff contains blue notes. The music features a repeating pattern of eighth notes in the treble and chords in the bass.

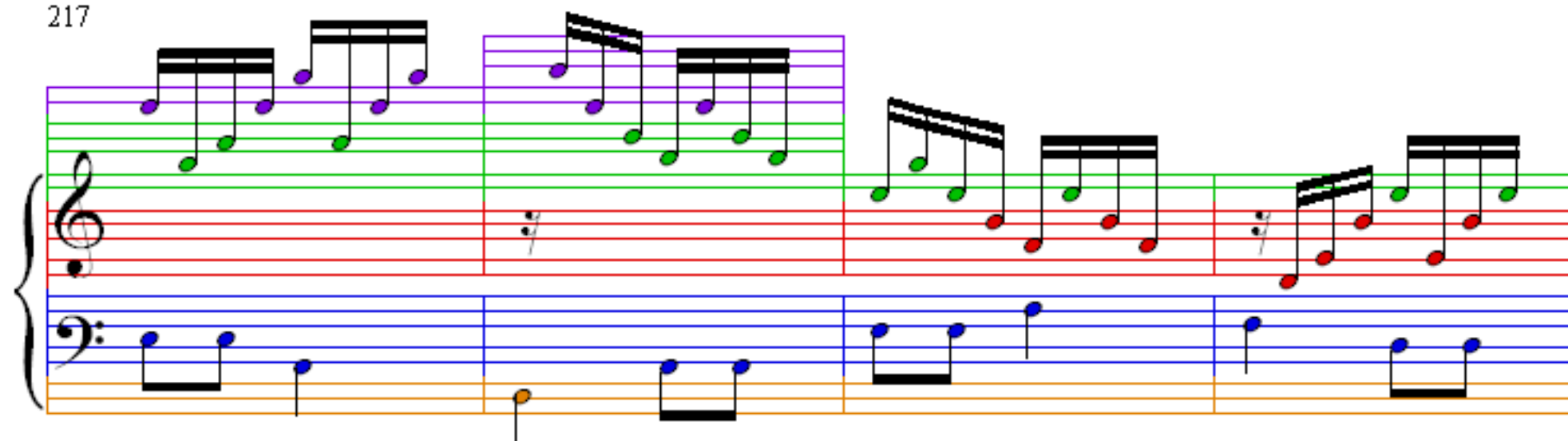
209

Measures 209-212. The treble clef staff contains green notes, and the bass clef staff contains blue notes. The music features a repeating pattern of eighth notes in the treble and chords in the bass.

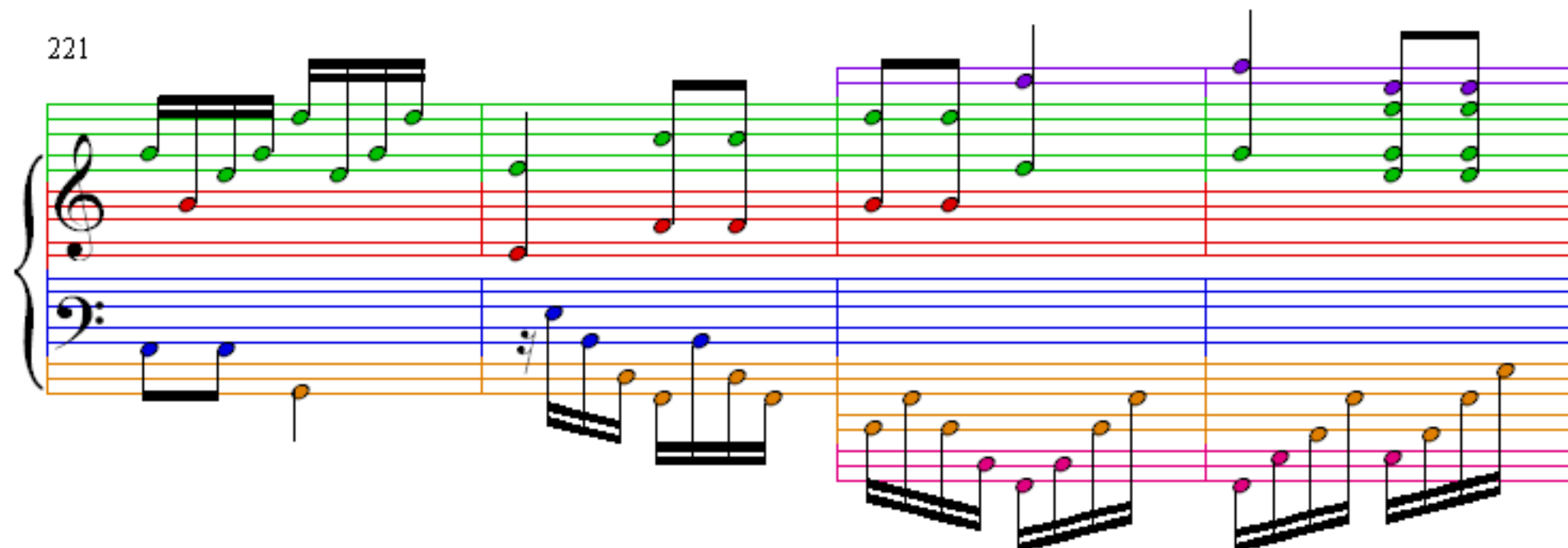
213

Measures 213-216. The treble clef staff contains green notes, and the bass clef staff contains blue notes. The music features a repeating pattern of eighth notes in the treble and chords in the bass.

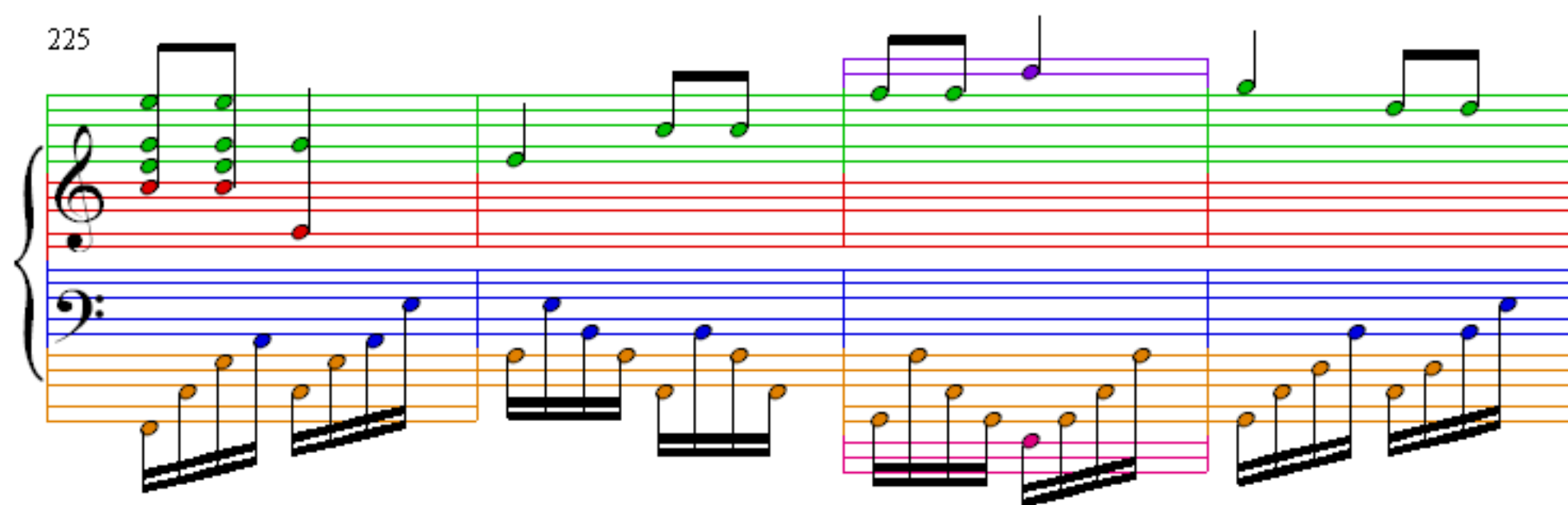
217



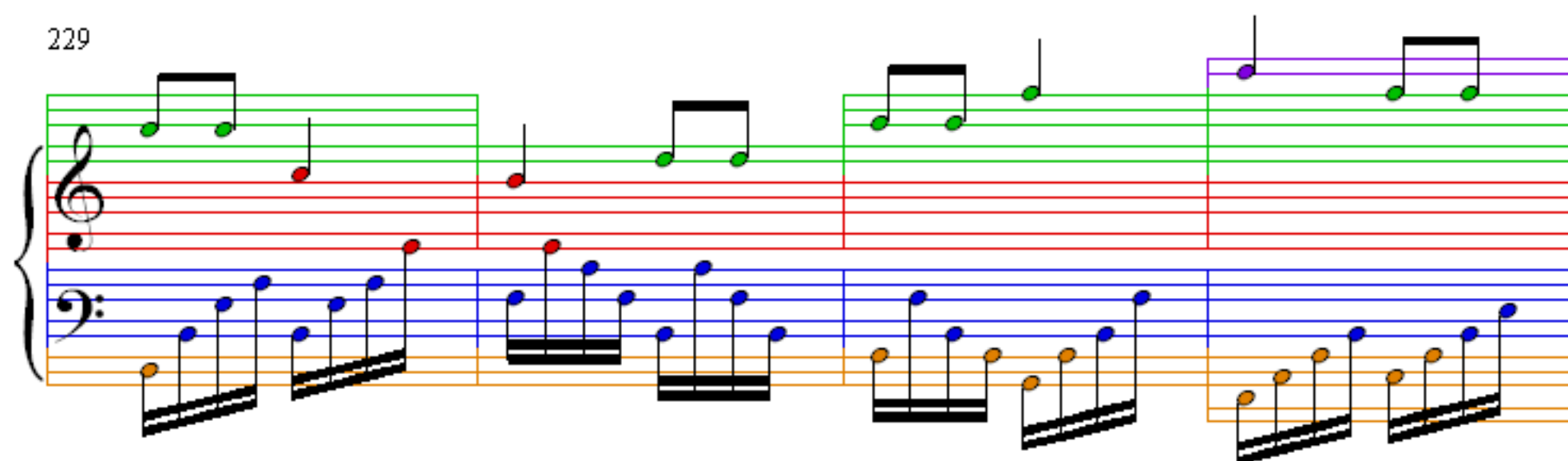
221



225



229



233

This system contains measures 233 through 236. The treble clef staff features a melody with green and purple notes, including a triplet in measure 234. The bass clef staff has a continuous eighth-note accompaniment with blue and orange notes. Measure 236 ends with a double bar line.

237

This system contains measures 237 through 240. The treble clef staff continues the melody with green and purple notes. The bass clef staff has rests in measures 237, 238, and 239, followed by a short eighth-note accompaniment in measure 240. Measure 240 ends with a double bar line.

241

This system contains measures 241 through 244. The treble clef staff has rests in measures 241 and 242, followed by a melody in measure 243 and a triplet in measure 244. The bass clef staff has a continuous eighth-note accompaniment with blue and orange notes. Measure 244 ends with a double bar line.

245

This system contains measures 245 through 248. The treble clef staff has a melody with green and red notes. The bass clef staff has a simple accompaniment with blue notes. Measure 248 ends with a double bar line.

249

253

257

261

265

Measures 265-268. Treble clef: purple notes (measures 265-266), green notes (measures 267-268). Bass clef: blue notes (measures 265-266), orange notes (measures 267-268). Measure 268 ends with a red note in the treble.

269

Measures 269-272. Treble clef: green notes (measures 269-270), purple notes (measures 271-272). Bass clef: blue notes (measures 269-270), red notes (measures 271-272). Measure 272 ends with a red note in the treble.

273

Measures 273-276. Treble clef: purple notes (measures 273-274), green notes (measures 275-276). Bass clef: blue notes (measures 273-274), red notes (measures 275-276). Measure 276 ends with a red note in the treble.

277

Measures 277-280. Treble clef: green notes (measures 277-278), red notes (measures 279-280). Bass clef: blue notes (measures 277-278), orange notes (measures 279-280). Measure 280 ends with a red note in the treble.

281

Measures 281-284. Treble clef: whole rests in measures 281 and 282, ascending eighth-note triplet in measure 283, quarter note in measure 284. Bass clef: eighth-note triplets in measures 281 and 282, whole rest in measure 283, quarter note in measure 284. Blue and red dots mark specific notes.

285

Measures 285-288. Treble clef: eighth-note pairs in measures 285 and 286, eighth-note pairs in measures 287 and 288. Bass clef: eighth-note pairs in measures 285 and 286, eighth-note pairs in measures 287 and 288. Purple and green dots mark specific notes.

289

Measures 289-292. Treble clef: eighth-note pairs in measures 289 and 290, eighth-note pairs in measures 291 and 292. Bass clef: eighth-note pairs in measures 289 and 290, eighth-note pairs in measures 291 and 292. Purple and green dots mark specific notes.

293

Measures 293-296. Treble clef: eighth-note pairs in measures 293 and 294, eighth-note pairs in measures 295 and 296. Bass clef: eighth-note pairs in measures 293 and 294, eighth-note pairs in measures 295 and 296. Purple and green dots mark specific notes.

297

301

305

309

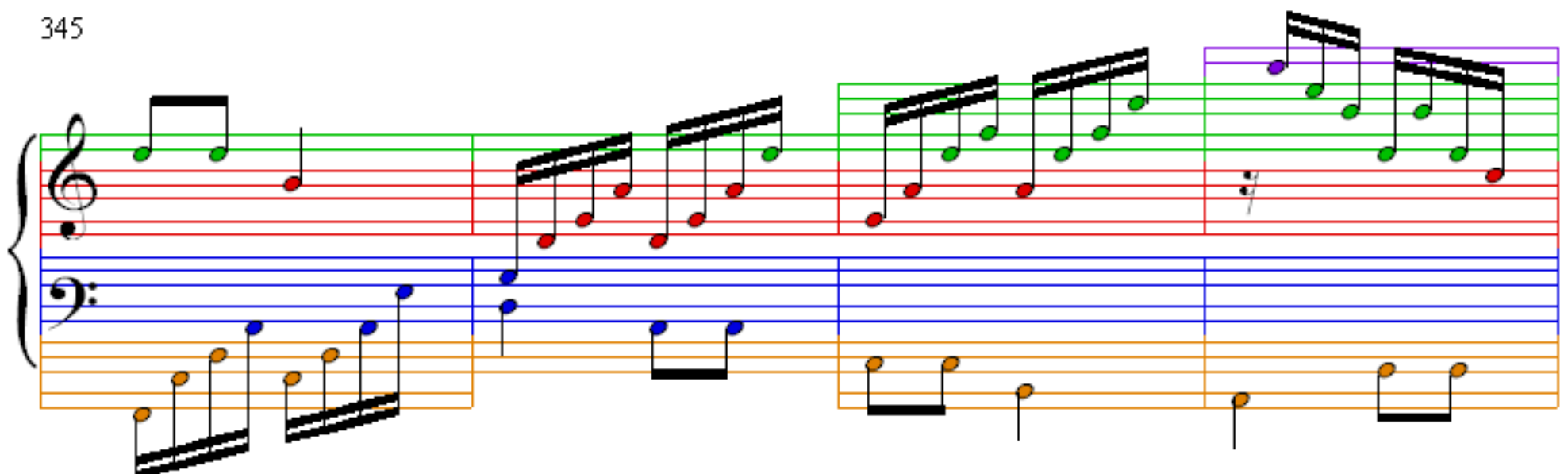
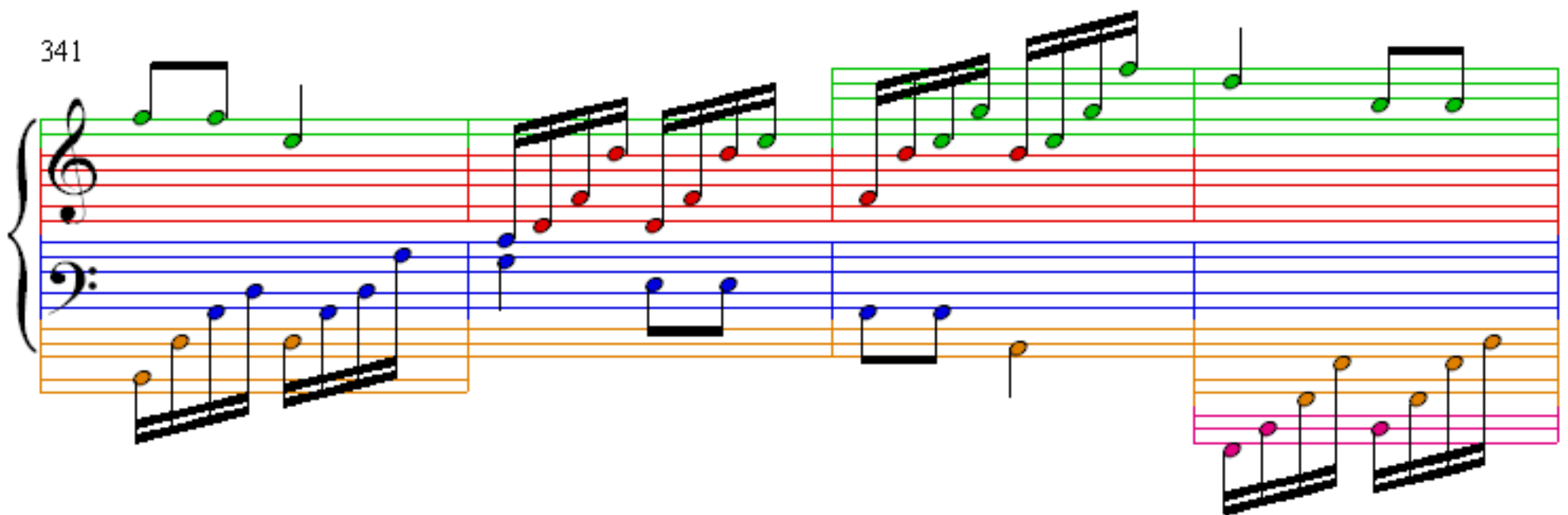
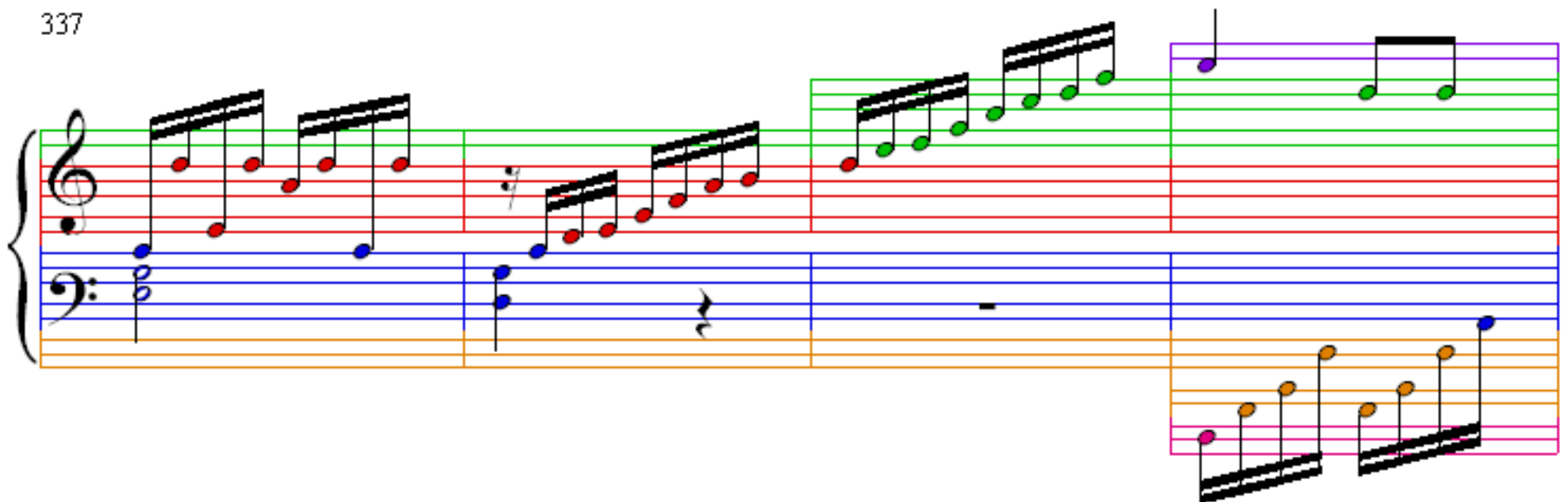
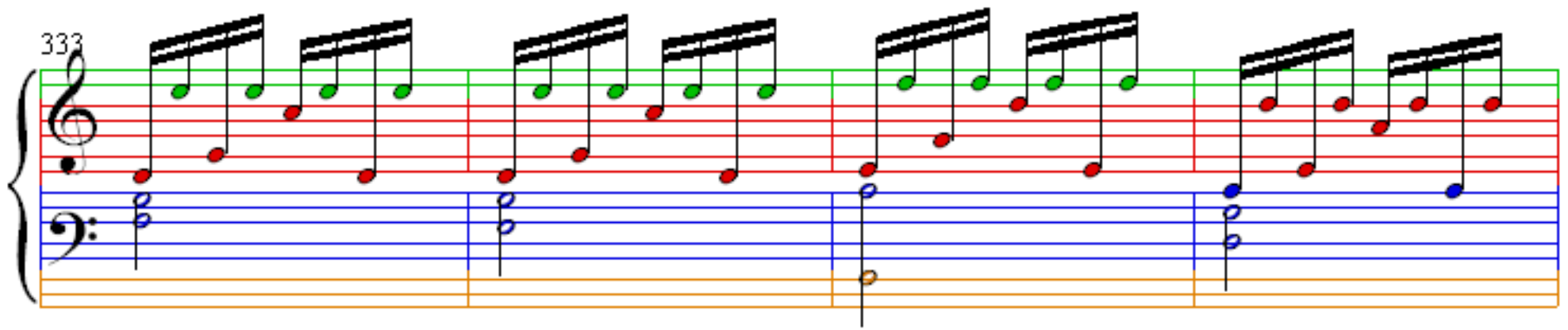
313

317

321

325

329



349

Measures 349-352. Treble clef: Repeating eighth-note pattern with green and red dots. Bass clef: Simple eighth-note accompaniment with orange and blue dots.

353

Measures 353-356. Treble clef: Repeating eighth-note pattern with green and red dots. Bass clef: Simple eighth-note accompaniment with orange and blue dots.

357

Measures 357-360. Treble clef: Repeating eighth-note pattern with green and red dots. Bass clef: Simple eighth-note accompaniment with orange and blue dots.

361

Measures 361-364. Treble clef: Repeating eighth-note pattern with green and red dots. Bass clef: Simple eighth-note accompaniment with orange and blue dots.

369

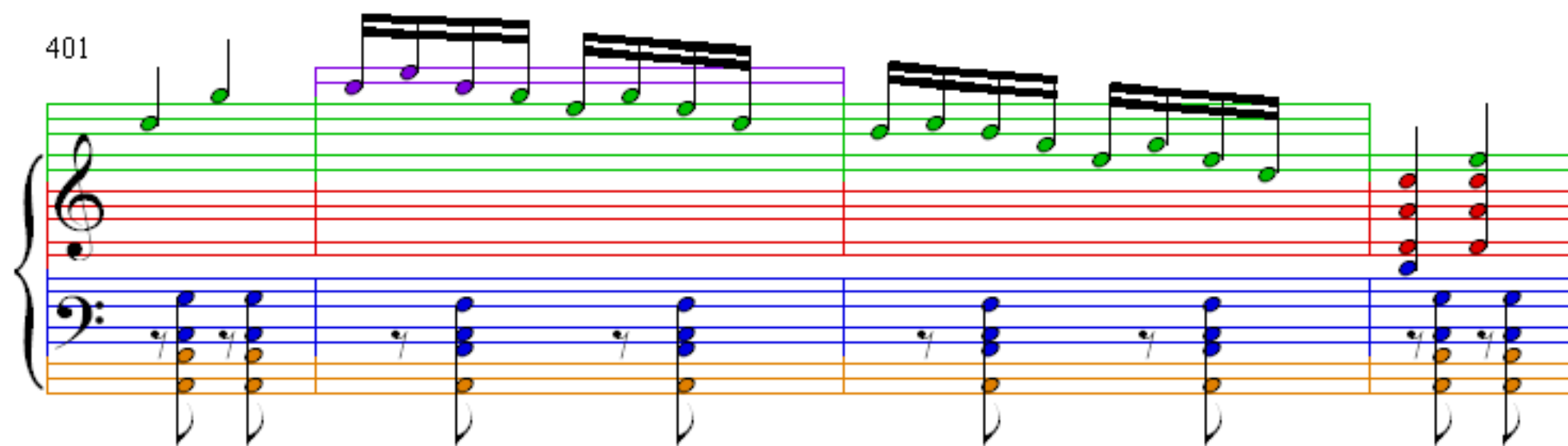
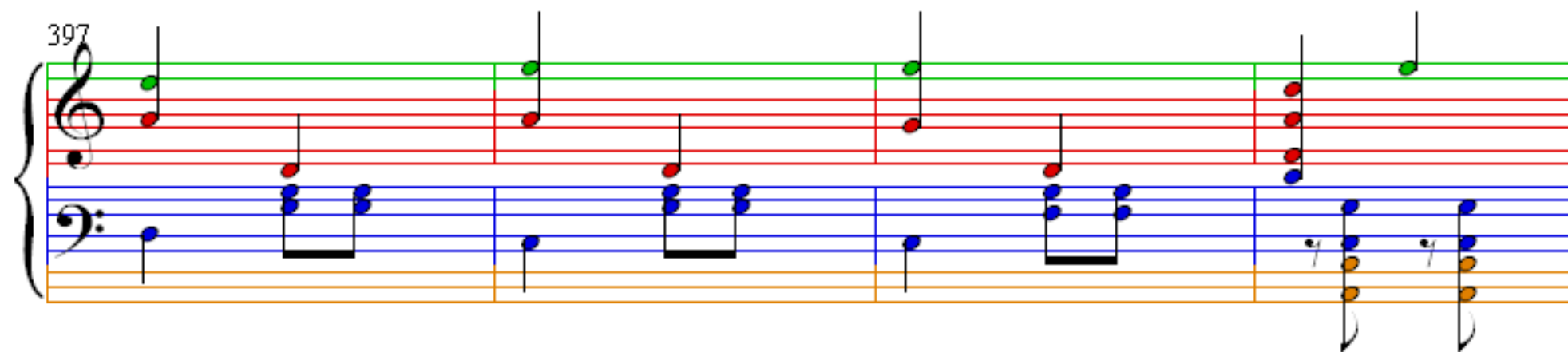
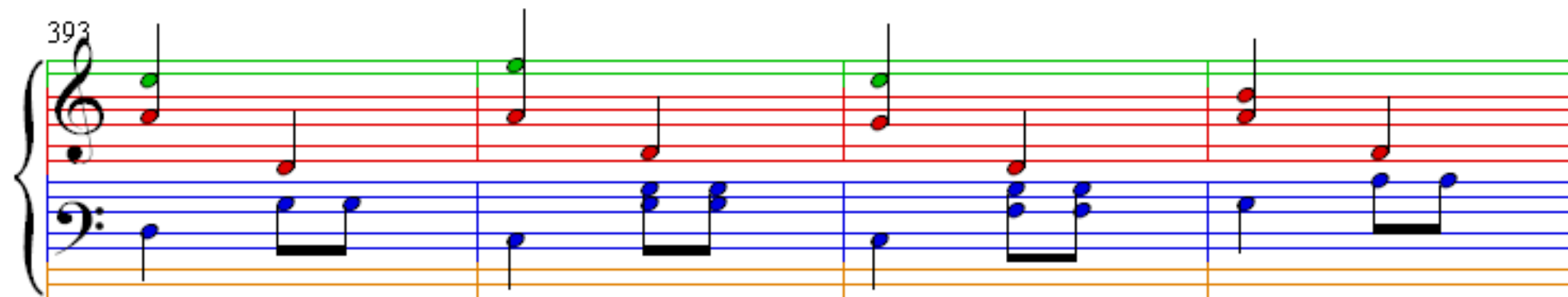
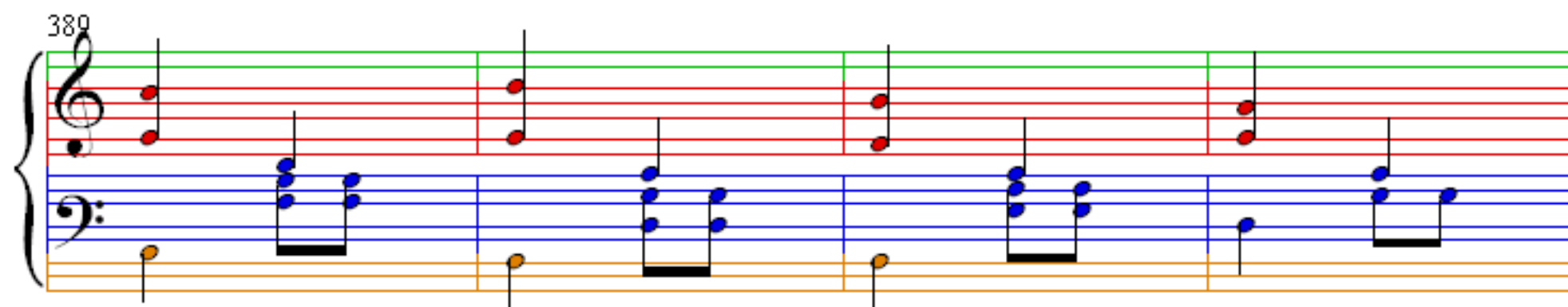
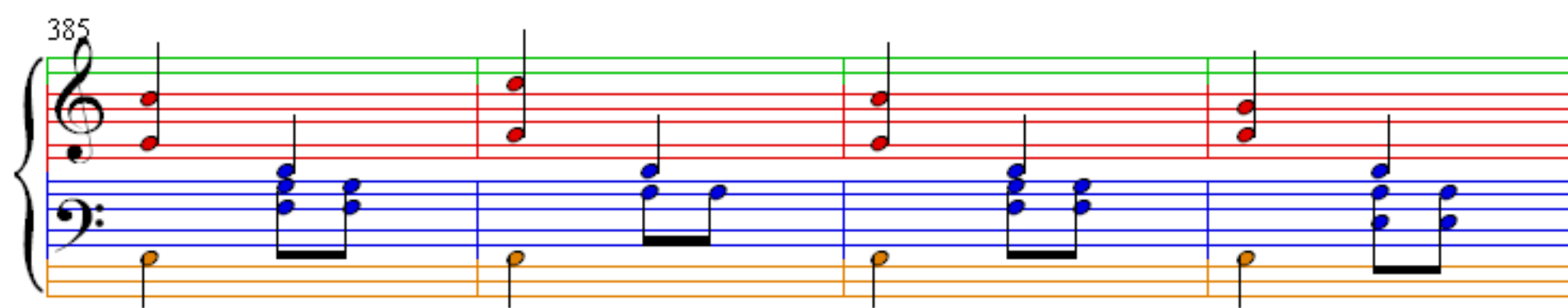
Musical score for 'The Rose Tree' (The Rose Tree). The score is written for a grand staff (treble and bass clefs) and includes a piano (p) dynamic marking. The melody is in the treble clef, and the accompaniment is in the bass clef. The key signature is one flat (B-flat), and the time signature is 4/4. The score consists of four measures. The melody is a simple, folk-like tune. The accompaniment is a simple, folk-like accompaniment. The score is written in a simple, folk-like style.

The musical score for Example 6-10 consists of four measures, numbered 373 through 376. The notation is presented on three staves: a top staff with a treble clef and red lines, a middle staff with a bass clef and blue lines, and a bottom staff with a single orange line. Measure 373 features a half note G4 in the treble and a half note E3 in the bass. Measure 374 contains a quarter rest in the treble and eighth notes D4 and C4 in the bass. Measure 375 shows a quarter rest in the treble and eighth notes B3 and A3 in the bass. Measure 376 has a quarter rest in the treble and eighth notes G3 and F3 in the bass.

377

The musical score for Example 10.10 is presented in a four-measure format. The vocal line, written in the treble clef, consists of a sequence of eighth notes: G4, A4, B4, C5, D5, E5, F5, and G5. The piano accompaniment is written in the bass clef. The right hand of the piano part plays a steady eighth-note bass line: G3, A3, B3, C4, D4, E4, F4, and G4. The left hand of the piano part plays a more complex melody, starting with a half-note chord of G3 and A3, followed by a half-note chord of B3 and C4, and then a half-note chord of D4 and E4. The notes are color-coded: red for the vocal line, blue for the piano right hand, and orange for the piano left hand.

A musical score for the song 'The Rose Tree'. The score is written for three parts: Treble Clef (top), Bass Clef (middle), and a third part (bottom). The Treble Clef part is in red, the Bass Clef part is in blue, and the third part is in orange. The score is divided into four measures. The first measure shows a treble clef with a red note on the first line (F4) and a bass clef with a blue note on the first line (F3). The second measure shows a treble clef with a red note on the second line (G4) and a bass clef with a blue note on the second line (G3). The third measure shows a treble clef with a red note on the third line (A4) and a bass clef with a blue note on the third line (A3). The fourth measure shows a treble clef with a red note on the fourth line (B4) and a bass clef with a blue note on the fourth line (B3). The score is labeled '381' in the top left corner.



405

Measures 405-408. The treble staff contains chords and melodic lines. The bass staff contains chords and melodic lines.

409

Measures 409-412. The treble staff contains chords and melodic lines. The bass staff contains chords and melodic lines.

413

Measures 413-416. The treble staff contains chords and melodic lines. The bass staff contains chords and melodic lines.

417

Measures 417-420. The treble staff contains chords and melodic lines. The bass staff contains chords and melodic lines.

421

Measures 421-424. Treble clef staff (green) and bass clef staff (blue). Measure numbers 421, 422, 423, 424 are indicated above the staff. The music features eighth and sixteenth notes in the treble and eighth notes in the bass. A purple highlight covers measures 422 and 423.

425

Measures 425-428. Treble clef staff (green) and bass clef staff (blue). Measure numbers 425, 426, 427, 428 are indicated above the staff. The music features eighth and sixteenth notes in the treble and eighth notes in the bass. A purple highlight covers measures 426 and 427.

429

Measures 429-432. Treble clef staff (green) and bass clef staff (blue). Measure numbers 429, 430, 431, 432 are indicated above the staff. The music features eighth and sixteenth notes in the treble and eighth notes in the bass. A purple highlight covers measures 430 and 431.

433

Measures 433-436. Treble clef staff (green) and bass clef staff (blue). Measure numbers 433, 434, 435, 436 are indicated above the staff. The music features eighth and sixteenth notes in the treble and eighth notes in the bass. A purple highlight covers measures 434 and 435.

437

Measures 437-440. Treble clef staff (green) and bass clef staff (blue). Measure numbers 437, 438, 439, 440 are indicated above the staff. The music features eighth and sixteenth notes in the treble and eighth notes in the bass. A purple highlight covers measures 438 and 439.

441

445

449

453

457

461

465