

Csikos Post

Herman Necke

1 = 100

Measures 1-4 of the piece. The music is in 2/4 time. The treble clef staff has a key signature of one flat (B-flat). The bass clef staff has a key signature of one flat (B-flat). The tempo is marked as 1 = 100. The notes are color-coded: green for the right hand and blue for the left hand. The first measure has a treble clef staff with a B-flat and a bass clef staff with a B-flat. The second measure has a treble clef staff with a B-flat and a bass clef staff with a B-flat. The third measure has a treble clef staff with a B-flat and a bass clef staff with a B-flat. The fourth measure has a treble clef staff with a B-flat and a bass clef staff with a B-flat.

5

Measures 5-8 of the piece. The music is in 2/4 time. The treble clef staff has a key signature of one flat (B-flat). The bass clef staff has a key signature of one flat (B-flat). The notes are color-coded: green for the right hand and blue for the left hand. The first measure has a treble clef staff with a B-flat and a bass clef staff with a B-flat. The second measure has a treble clef staff with a B-flat and a bass clef staff with a B-flat. The third measure has a treble clef staff with a B-flat and a bass clef staff with a B-flat. The fourth measure has a treble clef staff with a B-flat and a bass clef staff with a B-flat. The dynamic marking *p* is present in the first measure.

9

Measures 9-12 of the piece. The music is in 2/4 time. The treble clef staff has a key signature of one flat (B-flat). The bass clef staff has a key signature of one flat (B-flat). The notes are color-coded: green for the right hand and blue for the left hand. The first measure has a treble clef staff with a B-flat and a bass clef staff with a B-flat. The second measure has a treble clef staff with a B-flat and a bass clef staff with a B-flat. The third measure has a treble clef staff with a B-flat and a bass clef staff with a B-flat. The fourth measure has a treble clef staff with a B-flat and a bass clef staff with a B-flat. The dynamic marking *mf* is present in the first measure.

13

Measures 13-16 of the piece. The music is in 2/4 time. The treble clef staff has a key signature of one flat (B-flat). The bass clef staff has a key signature of one flat (B-flat). The notes are color-coded: green for the right hand and blue for the left hand. The first measure has a treble clef staff with a B-flat and a bass clef staff with a B-flat. The second measure has a treble clef staff with a B-flat and a bass clef staff with a B-flat. The third measure has a treble clef staff with a B-flat and a bass clef staff with a B-flat. The fourth measure has a treble clef staff with a B-flat and a bass clef staff with a B-flat.

17

Measures 17-20 of the musical score. The treble clef staff features a melody with eighth and sixteenth notes, while the bass clef staff provides a harmonic accompaniment with eighth notes. The music is marked with a piano (*p*) dynamic. The score is color-coded with green, red, blue, and orange lines.

21

Measures 21-24 of the musical score. The treble clef staff features a melody with eighth and sixteenth notes, while the bass clef staff provides a harmonic accompaniment with eighth notes. The music is marked with a fortissimo (*ff*) dynamic. The score is color-coded with green, red, blue, and orange lines.

25

Measures 25-28 of the musical score. The treble clef staff features a melody with eighth and sixteenth notes, while the bass clef staff provides a harmonic accompaniment with eighth notes. The score is color-coded with green, red, blue, and orange lines.

29

Measures 29-32 of the musical score. The treble clef staff features a melody with eighth and sixteenth notes, while the bass clef staff provides a harmonic accompaniment with eighth notes. The score is color-coded with green, red, blue, and orange lines.

33

Measures 33-36 of the musical score. The treble clef staff features a melody with eighth and sixteenth notes, accented with slurs and ties. The bass clef staff provides a harmonic accompaniment with eighth and sixteenth notes. The music is written on a grand staff with a brace connecting the two staves. The notes are color-coded: purple for the treble clef and blue for the bass clef. The background is divided into four measures by vertical red lines.

37

Measures 37-40 of the musical score. The treble clef staff features a melody with eighth and sixteenth notes, accented with slurs and ties. The bass clef staff provides a harmonic accompaniment with eighth and sixteenth notes. The music is written on a grand staff with a brace connecting the two staves. The notes are color-coded: purple for the treble clef and blue for the bass clef. The background is divided into four measures by vertical red lines. A dynamic marking of *ff* (fortissimo) is present in the first measure of the treble staff.

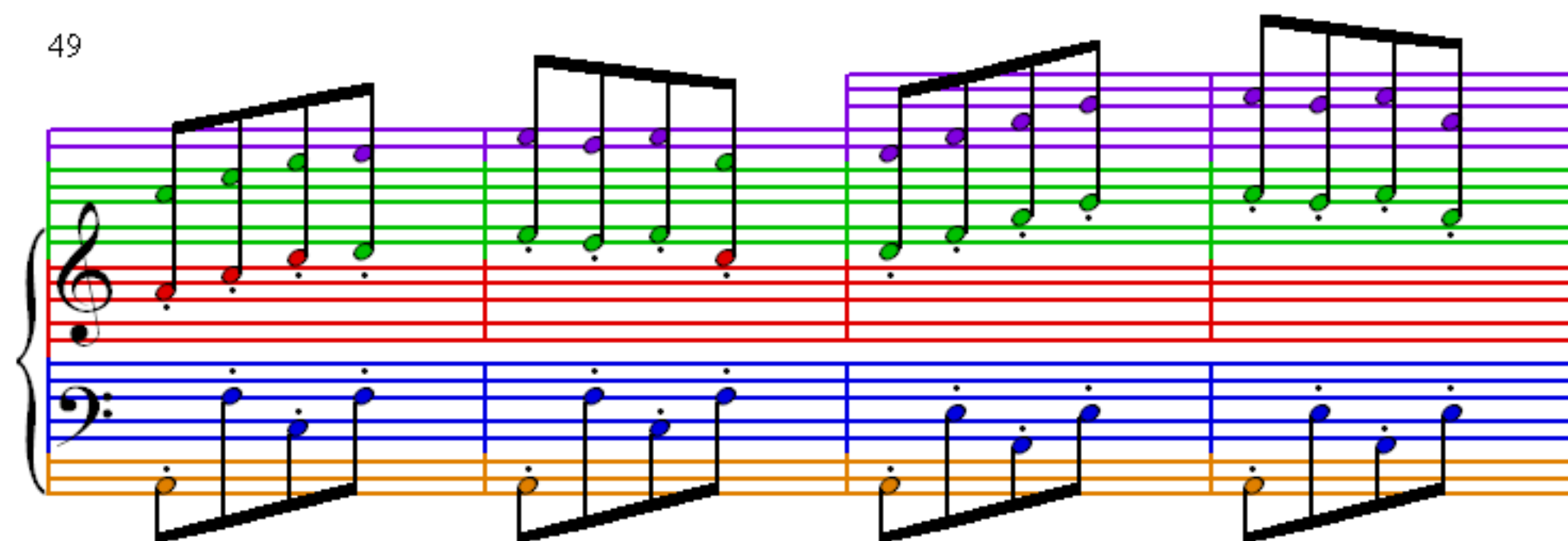
41

Measures 41-44 of the musical score. The treble clef staff features a melody with eighth and sixteenth notes, accented with slurs and ties. The bass clef staff provides a harmonic accompaniment with eighth and sixteenth notes. The music is written on a grand staff with a brace connecting the two staves. The notes are color-coded: purple for the treble clef and blue for the bass clef. The background is divided into four measures by vertical red lines. A dynamic marking of *p* (piano) is present in the first measure of the treble staff.

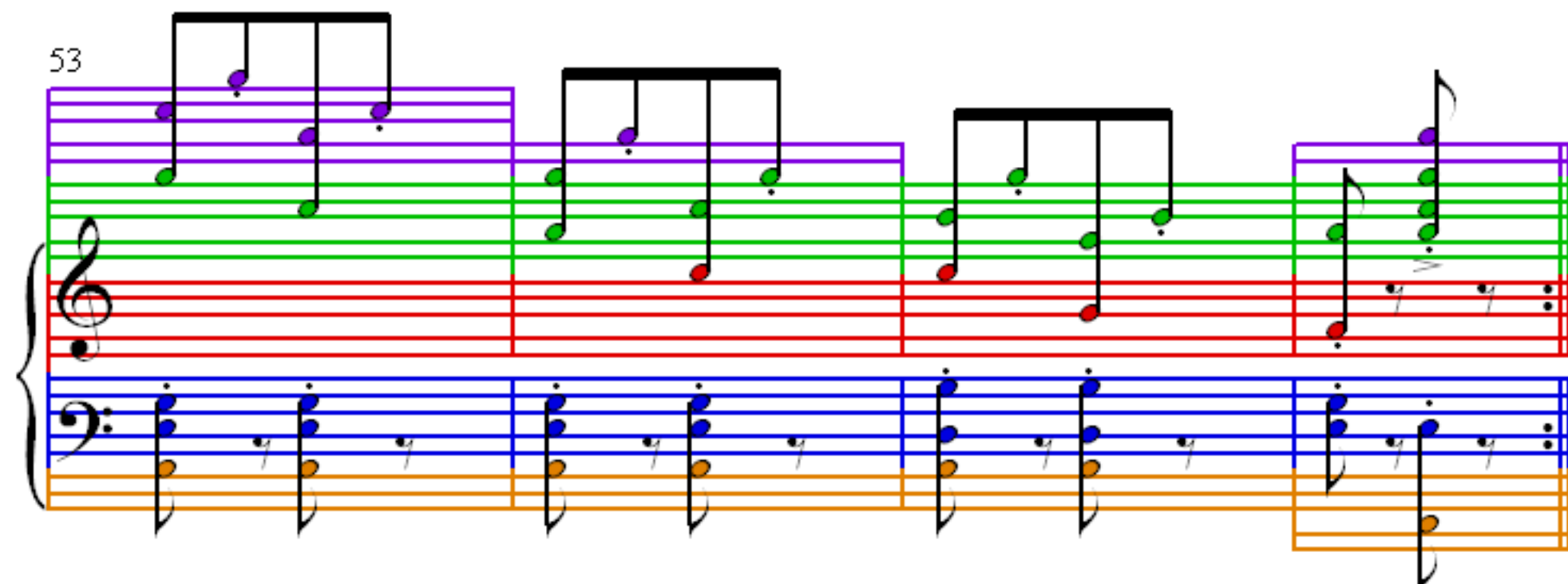
45

Measures 45-48 of the musical score. The treble clef staff features a melody with eighth and sixteenth notes, accented with slurs and ties. The bass clef staff provides a harmonic accompaniment with eighth and sixteenth notes. The music is written on a grand staff with a brace connecting the two staves. The notes are color-coded: purple for the treble clef and blue for the bass clef. The background is divided into four measures by vertical red lines. A dynamic marking of *mf* (mezzo-forte) is present in the first measure of the treble staff.

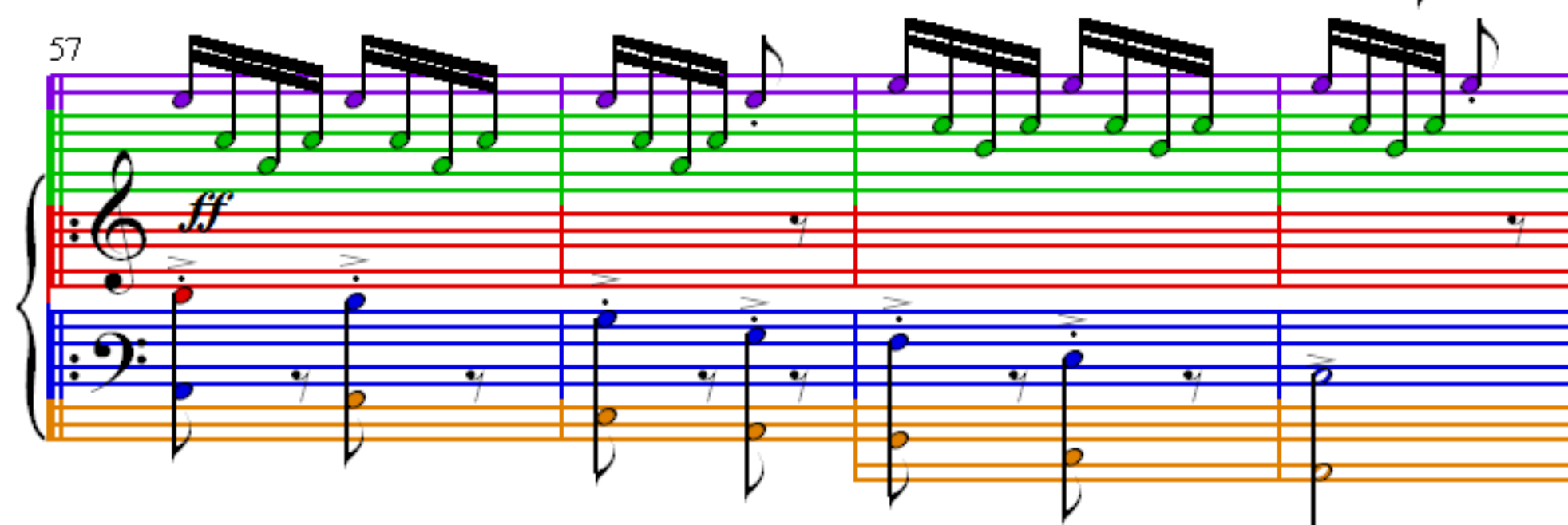
49



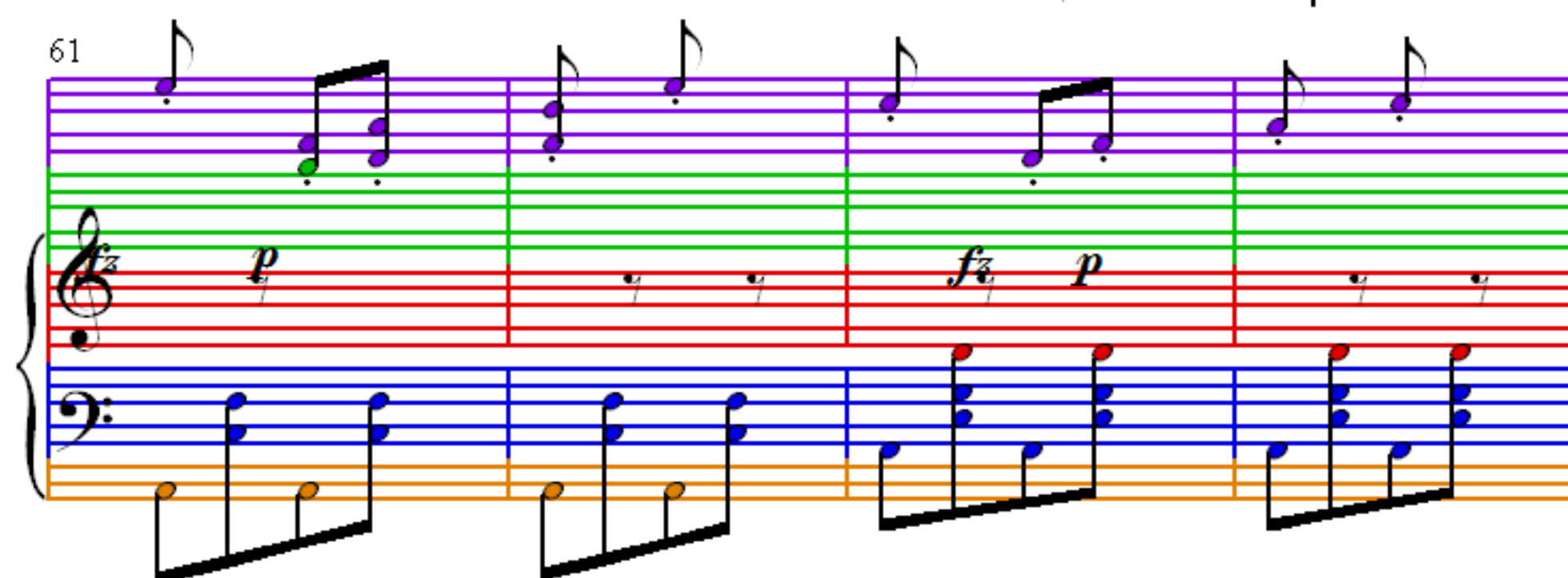
53



57



61



65

Measures 65-68: Treble staff contains ascending eighth-note chords. Bass staff contains eighth-note accompaniment.

69

Measures 69-72: Treble staff contains ascending eighth-note chords. Bass staff contains eighth-note accompaniment.

73

Measures 73-76: Treble staff contains descending eighth-note line. Bass staff contains eighth-note accompaniment.

77

Measures 77-80: Treble staff contains descending eighth-note line. Bass staff contains eighth-note accompaniment.

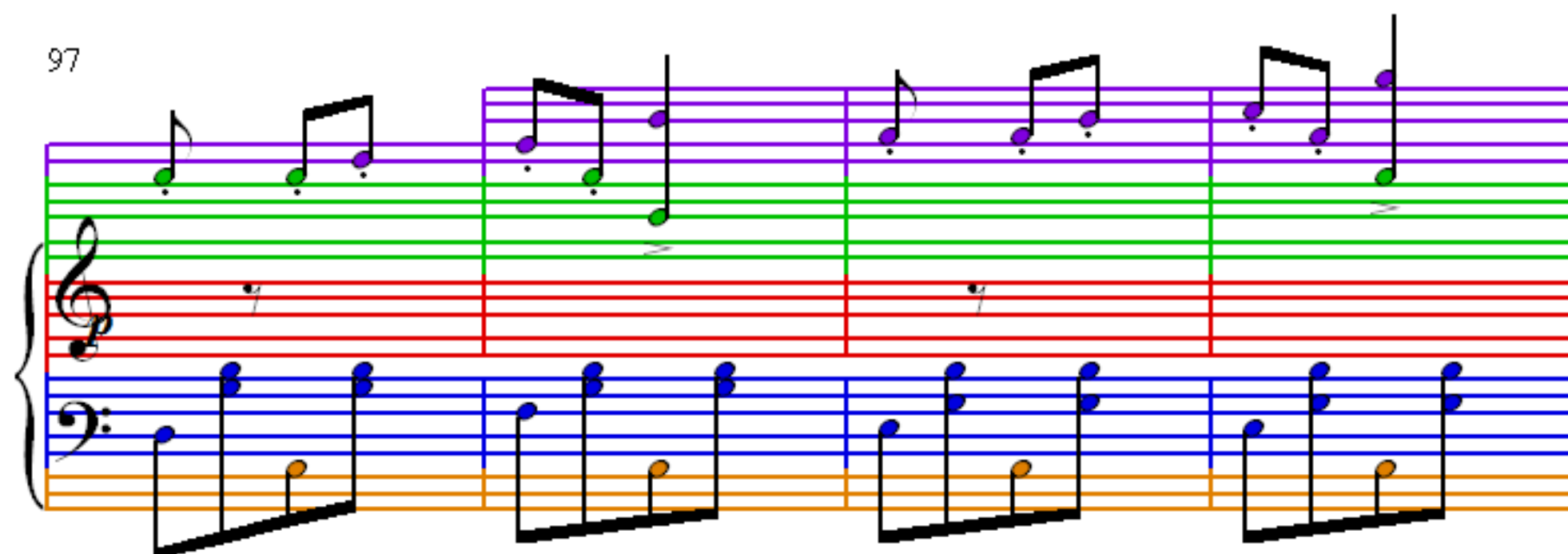
81

85

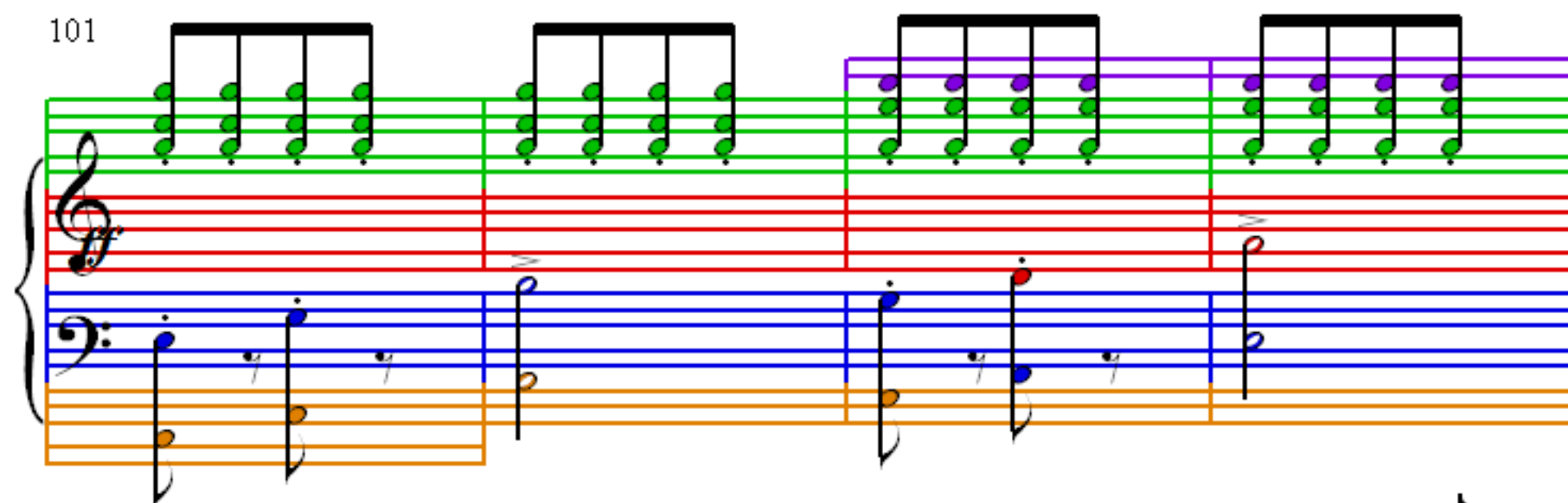
89

93

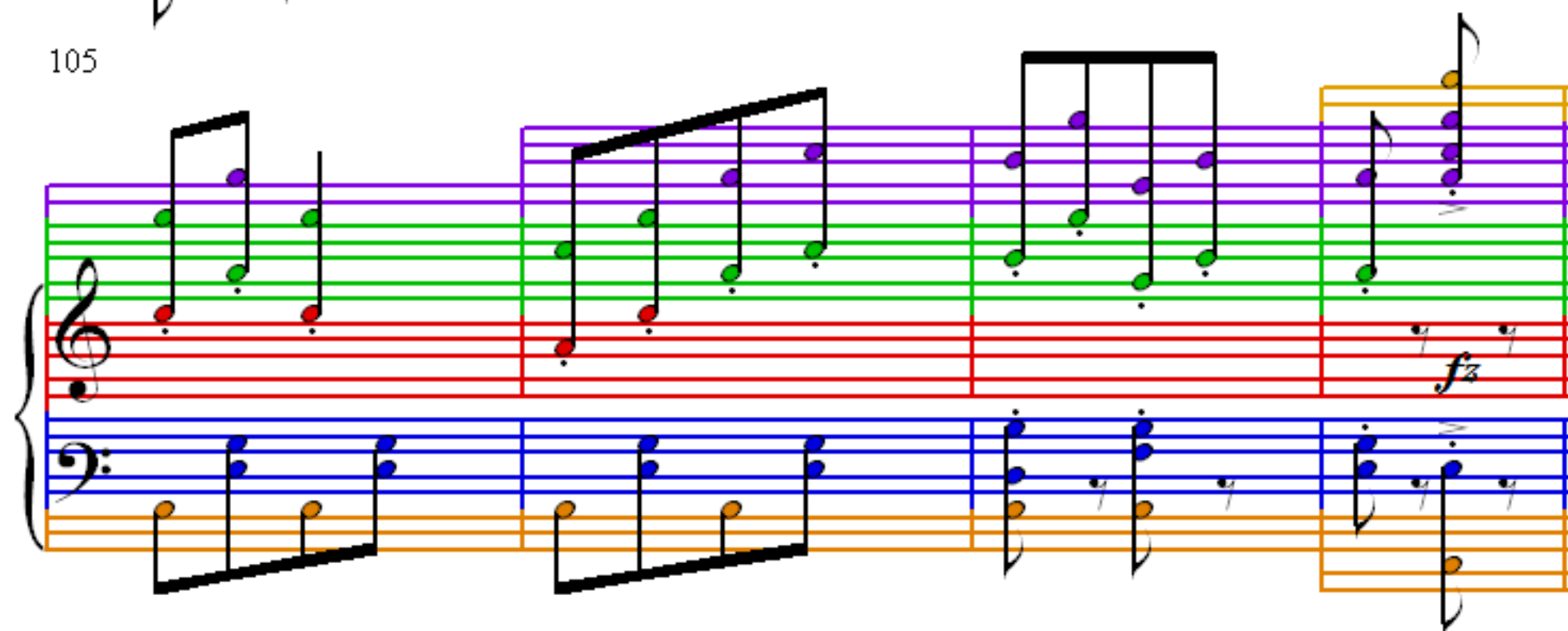
97



101



105



109

