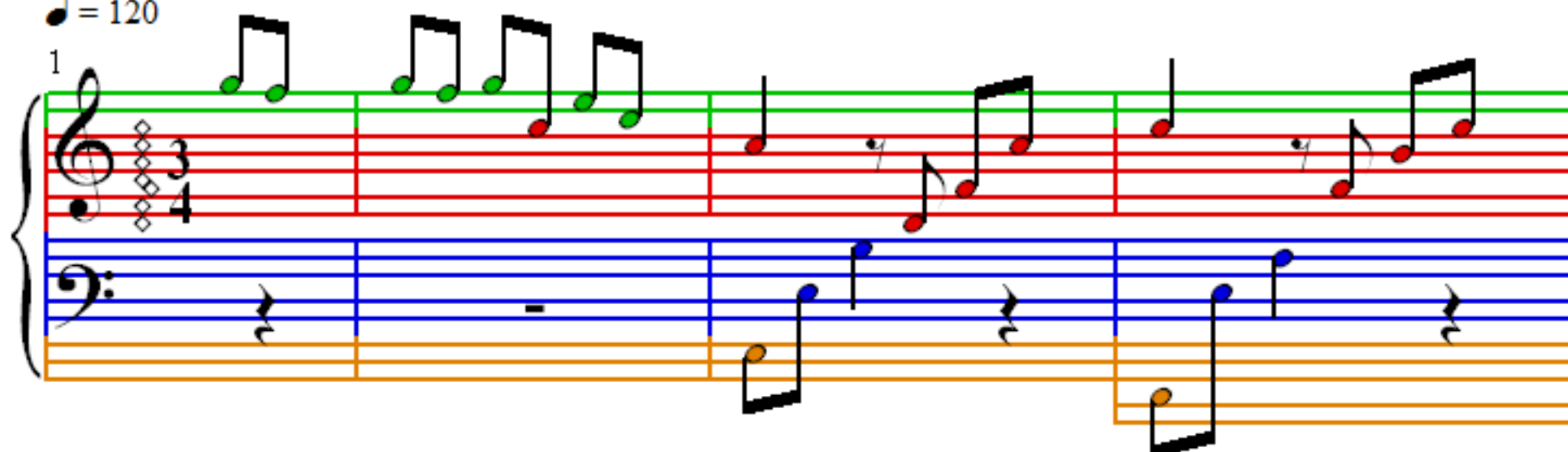


# Fur Elise

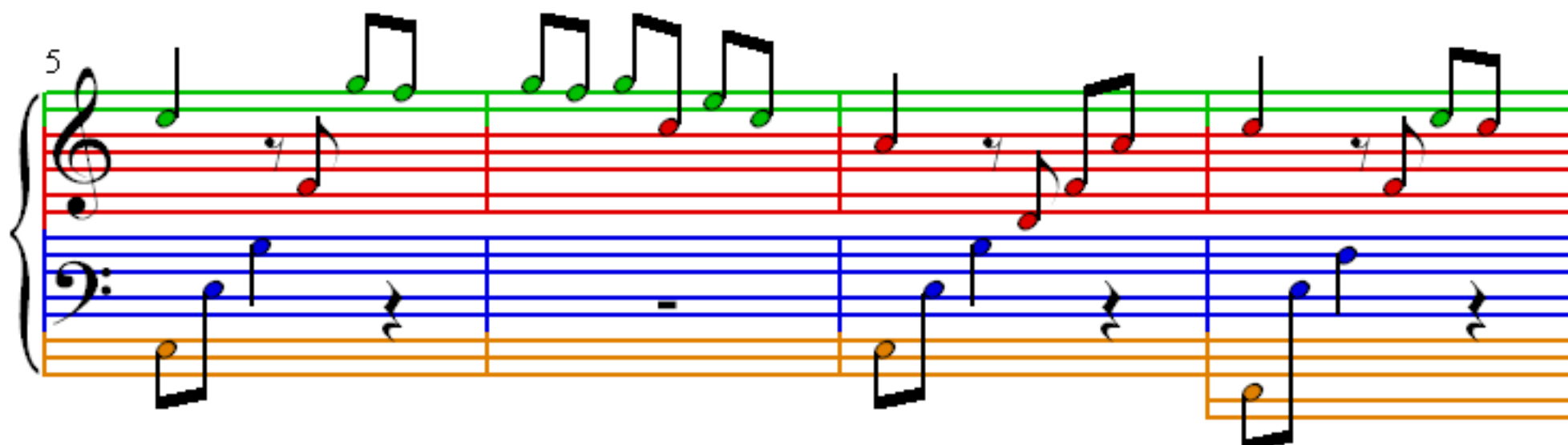
Ludwig van Beethoven

$\bullet = 120$

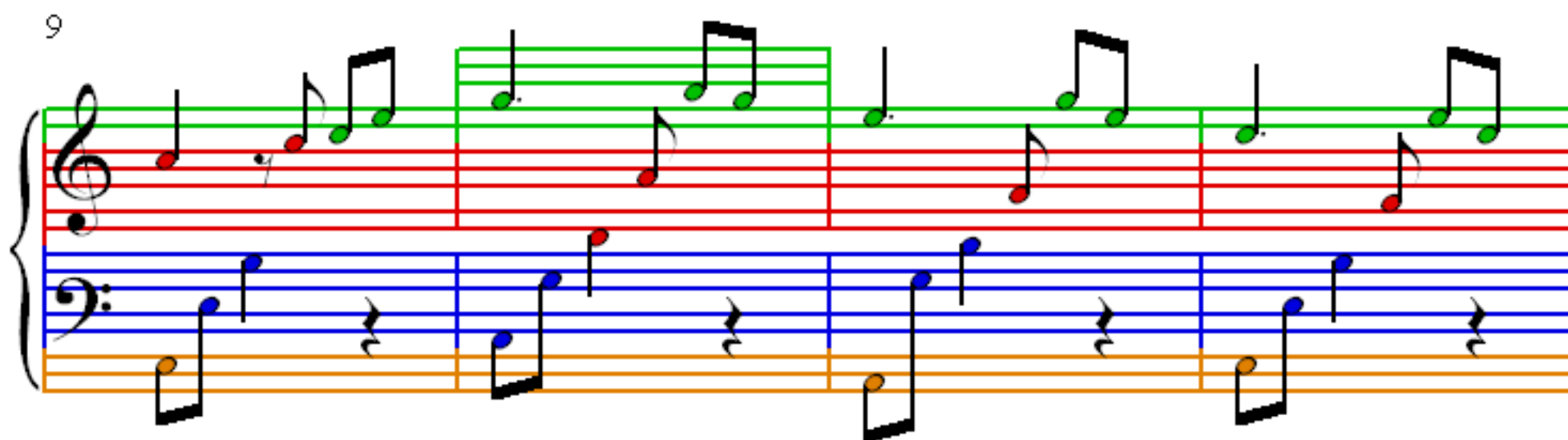
1



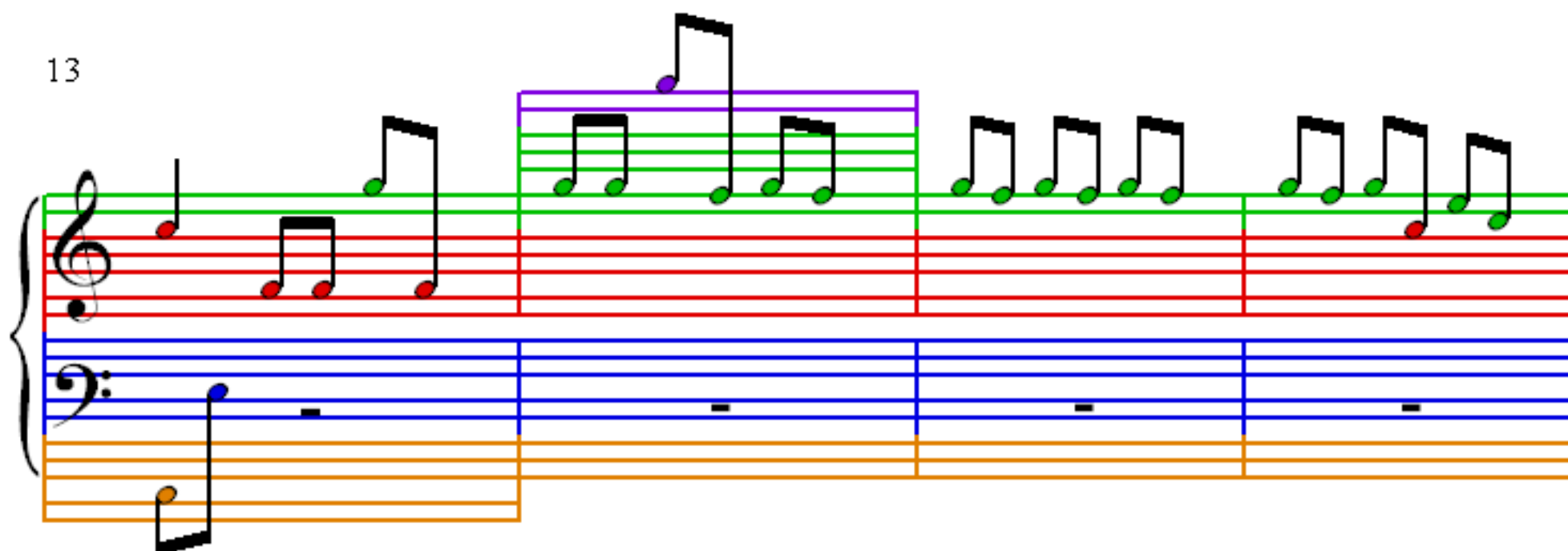
5



9



13



This image displays a musical score for the piece 'Für Elise' by Ludwig van Beethoven, specifically measures 17 through 33. The score is written for piano and is presented in a system of five staves, each containing a grand staff (treble and bass clefs). The notation is color-coded: treble clef notes are green, bass clef notes are blue, and the piano accompaniment in the bass clef is orange. The melody in the treble clef features various note values, including eighth and sixteenth notes, and rests. The piano accompaniment consists of a steady eighth-note pattern in the bass clef. The score is divided into measures by vertical bar lines, and the measure numbers 17, 21, 25, 29, and 33 are indicated at the beginning of their respective systems. A pink bracket highlights a specific measure in the bass clef of the fourth system (measure 30).

37

Measures 37-41 of the piano piece 'Für Elise'. The notation is presented on a grand staff with treble and bass clefs. The right hand (treble clef) features a melody of eighth and sixteenth notes, with some notes highlighted in green. The left hand (bass clef) plays a steady eighth-note accompaniment, with notes highlighted in blue and orange. A pink box highlights the final note of measure 41 in the bass clef.

42

Measures 42-45 of the piano piece 'Für Elise'. The right hand (treble clef) plays a complex, ascending and then descending melodic line with many beamed sixteenth notes, with notes highlighted in green and purple. The left hand (bass clef) provides a simple accompaniment of quarter notes, with notes highlighted in blue. A pink box highlights the final note of measure 45 in the bass clef.

46

Measures 46-49 of the piano piece 'Für Elise'. The right hand (treble clef) plays a melody of eighth and sixteenth notes, with notes highlighted in green. The left hand (bass clef) plays a simple accompaniment of quarter notes, with notes highlighted in blue. A pink box highlights the final note of measure 49 in the bass clef.

50

Measures 50-53 of the piano piece 'Für Elise'. The right hand (treble clef) plays a melody of eighth and sixteenth notes, with notes highlighted in green. The left hand (bass clef) plays a simple accompaniment of quarter notes, with notes highlighted in blue. A pink box highlights the final note of measure 53 in the bass clef.