

# Maple Leaf Rag

S. Joplin (1868–1917)

♩ = 120

1

The first system of the Maple Leaf Rag, measures 1-4. It is in 2/4 time with a tempo of 120 beats per minute. The music is written for piano on a grand staff. The right hand (treble clef) features a melody of eighth notes, with some notes highlighted in green and others in red. The left hand (bass clef) plays a steady eighth-note accompaniment, with notes highlighted in blue and orange. The system is divided into four measures by vertical bar lines.

5

The second system of the Maple Leaf Rag, measures 5-8. Measures 5 and 6 continue the eighth-note accompaniment in the left hand, with notes in blue and orange. Measures 7 and 8 show a change in the right hand, with notes in red and green. The system is divided into four measures by vertical bar lines.

9

The third system of the Maple Leaf Rag, measures 9-12. Measures 9 and 10 continue the eighth-note accompaniment in the left hand, with notes in blue and orange. Measures 11 and 12 show a change in the right hand, with notes in red and green. The system is divided into four measures by vertical bar lines.

13

17

21

25

Maple Leaf Rag, measures 25-28. Treble staff (purple line, green notes), Bass staff (blue line, red notes). Circled notes in measures 25 and 26.

29

Maple Leaf Rag, measures 29-32. Treble staff (green line, red notes), Bass staff (blue line, blue notes). Circled notes in measures 29 and 30.

33

Maple Leaf Rag, measures 33-36. Treble staff (green line, green notes), Bass staff (blue line, orange notes). Circled notes in measures 33 and 34.

37

Measures 37-40 of the Maple Leaf Rag. The treble clef staff features a melody of eighth and sixteenth notes, with some notes circled in grey. The bass clef staff provides a harmonic accompaniment with chords and single notes. The notes are color-coded: green for the melody, red for the bass line, blue for the bass line, and orange for the bass line.

41

Measures 41-44 of the Maple Leaf Rag. The treble clef staff continues the melody, with some notes circled in grey. The bass clef staff provides a harmonic accompaniment with chords and single notes. The notes are color-coded: green for the melody, red for the bass line, blue for the bass line, and orange for the bass line.

45

Measures 45-48 of the Maple Leaf Rag. The treble clef staff continues the melody, with some notes circled in grey. The bass clef staff provides a harmonic accompaniment with chords and single notes. The notes are color-coded: green for the melody, red for the bass line, blue for the bass line, and orange for the bass line.

49

53

57



61

65

69

73

77

81

85

89

93



97

101

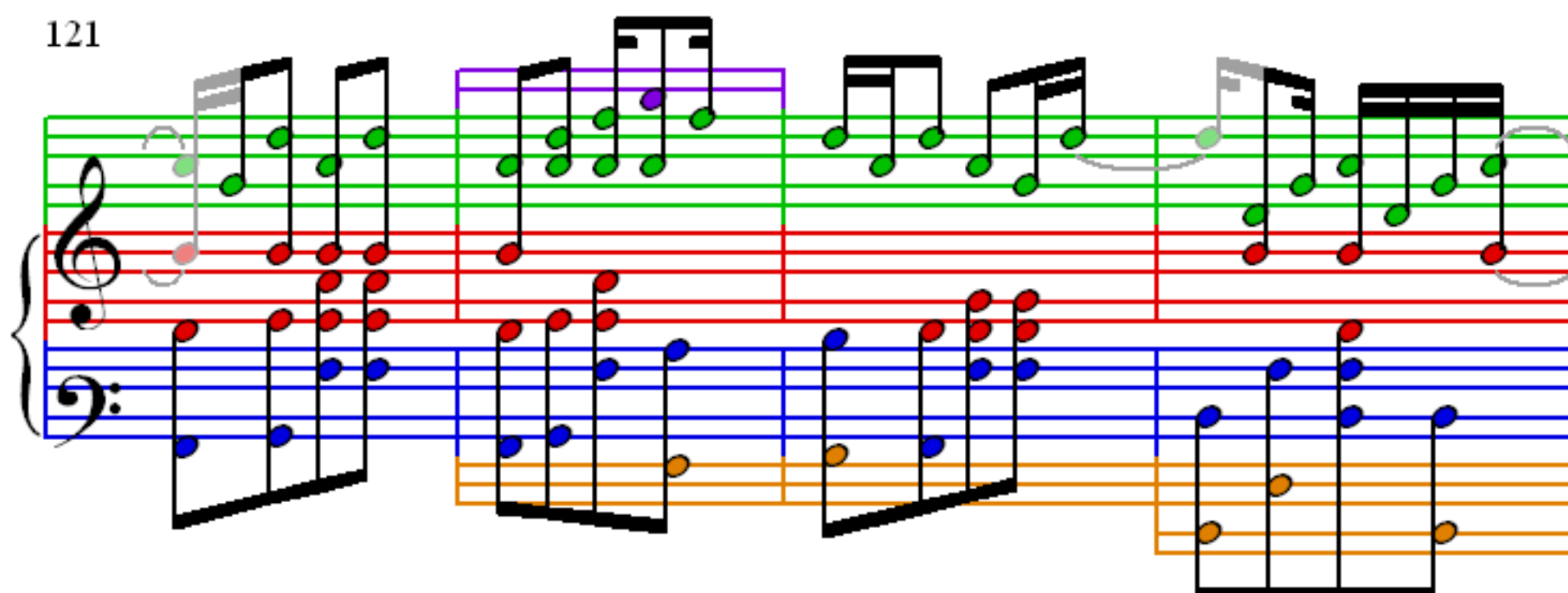
105

109

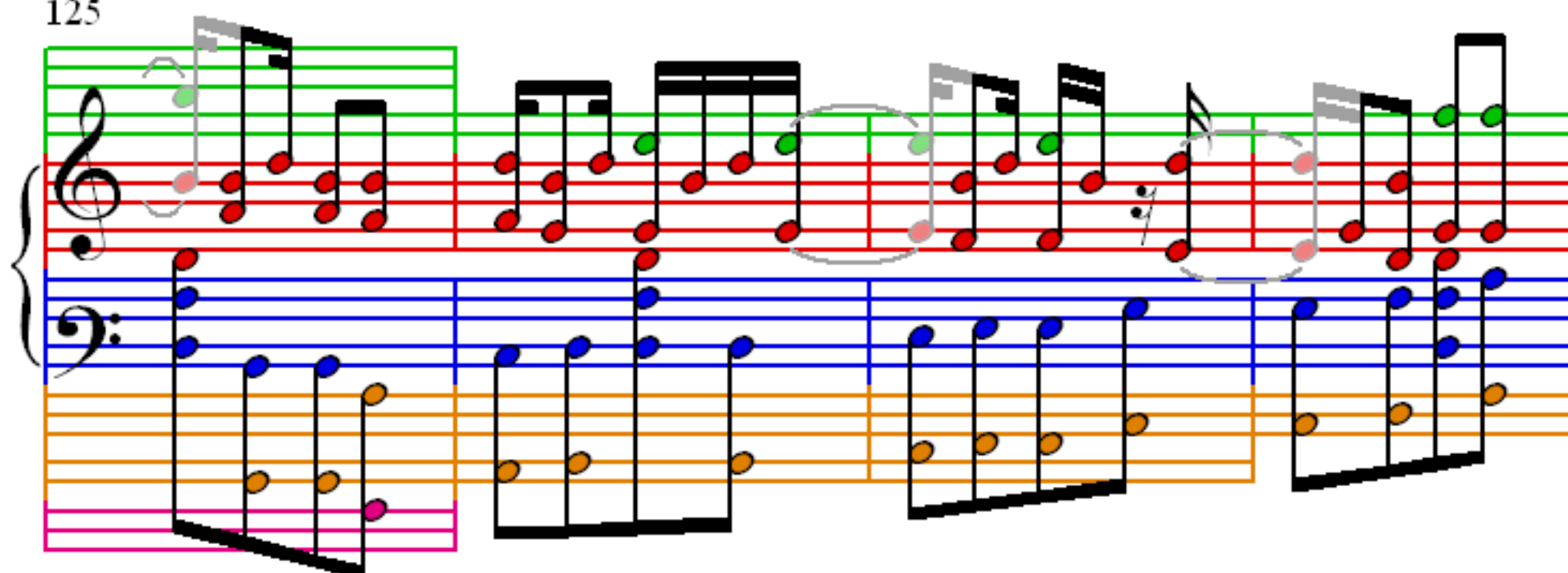
113

117

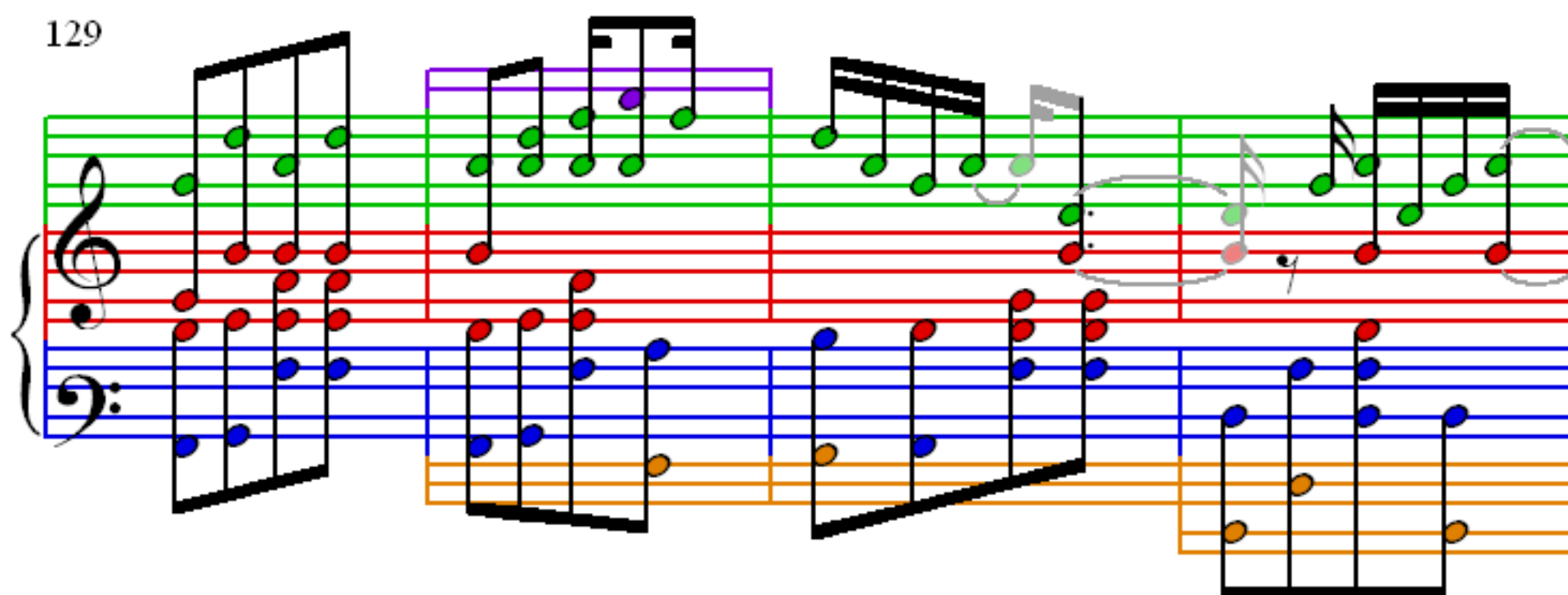
121



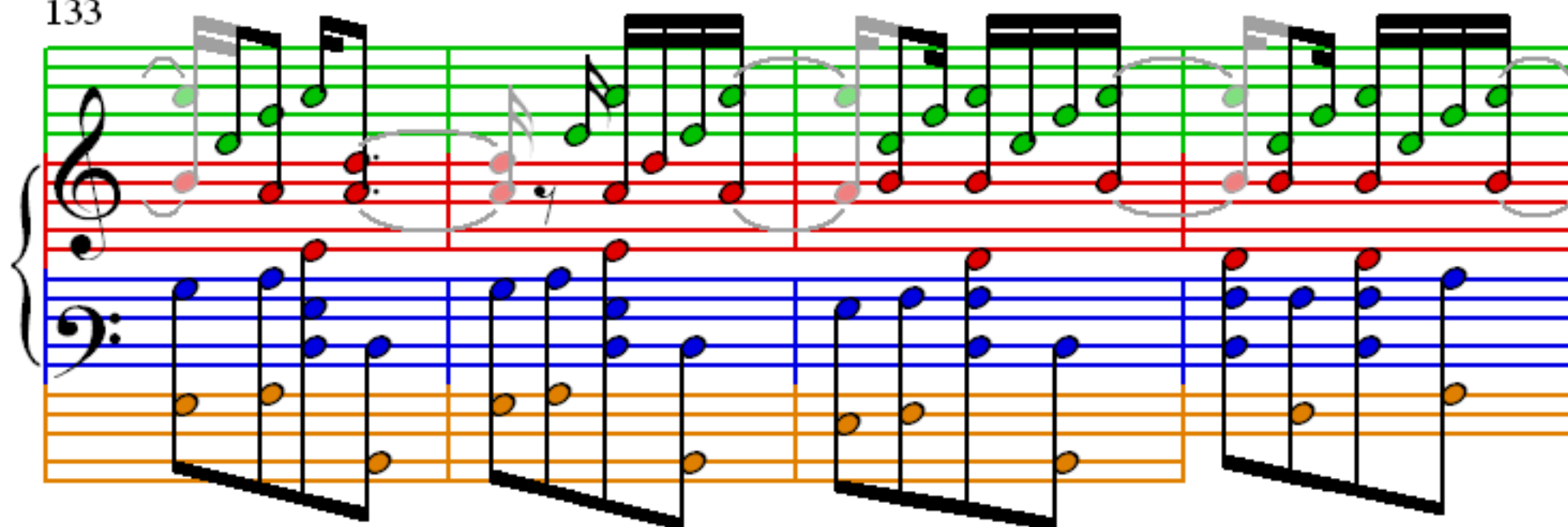
125



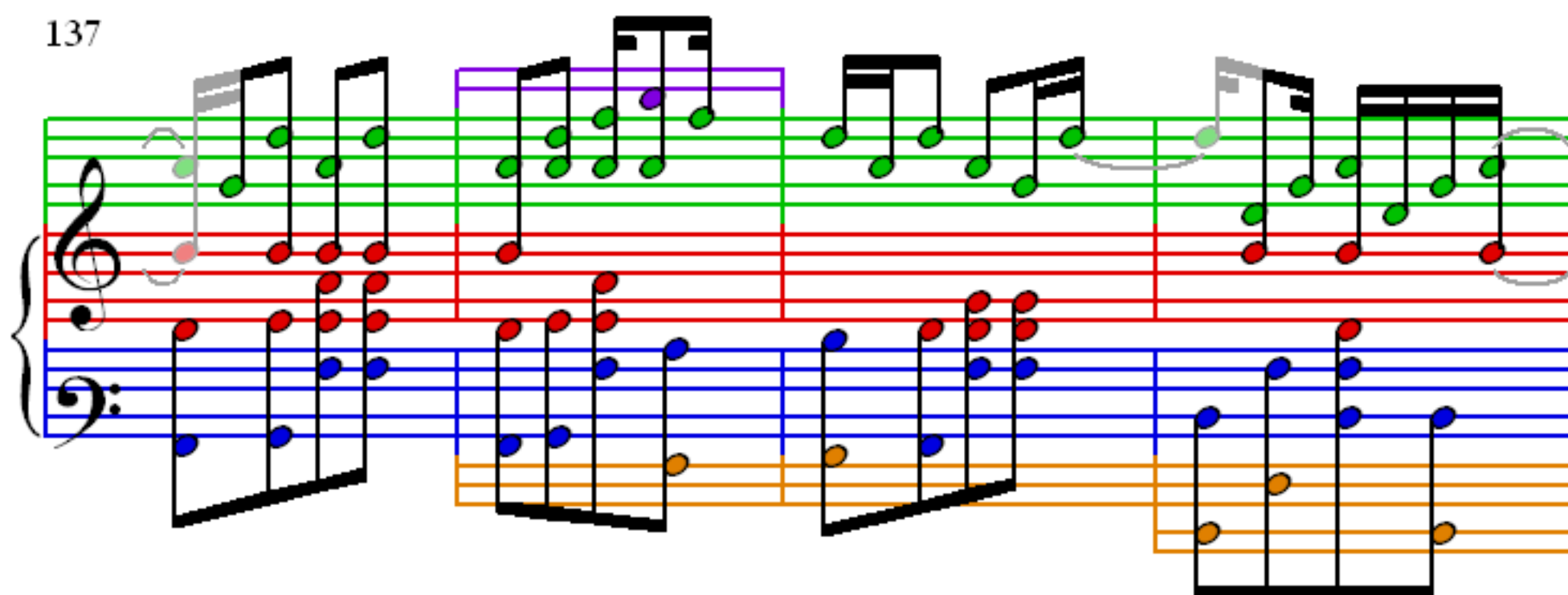
129



133



137



141

