

The Entertainer

S. Joplin (1868–1917)

1

$\bullet = 60$

Measures 1-4 of the piano score for 'The Entertainer'. The score is in 2/4 time, indicated by a treble clef, a key signature of two flats (B-flat and E-flat), and a 2/4 time signature. The tempo is marked as quarter note = 60. The music features a complex, syncopated melody in the right hand, primarily using eighth and sixteenth notes, with some triplets. The left hand provides a steady bass line with eighth notes. The notes are color-coded: purple for the melody, green for the right hand accompaniment, red for the left hand accompaniment, blue for the bass line, and orange for the left hand accompaniment. A pink box highlights the final measure of the system.

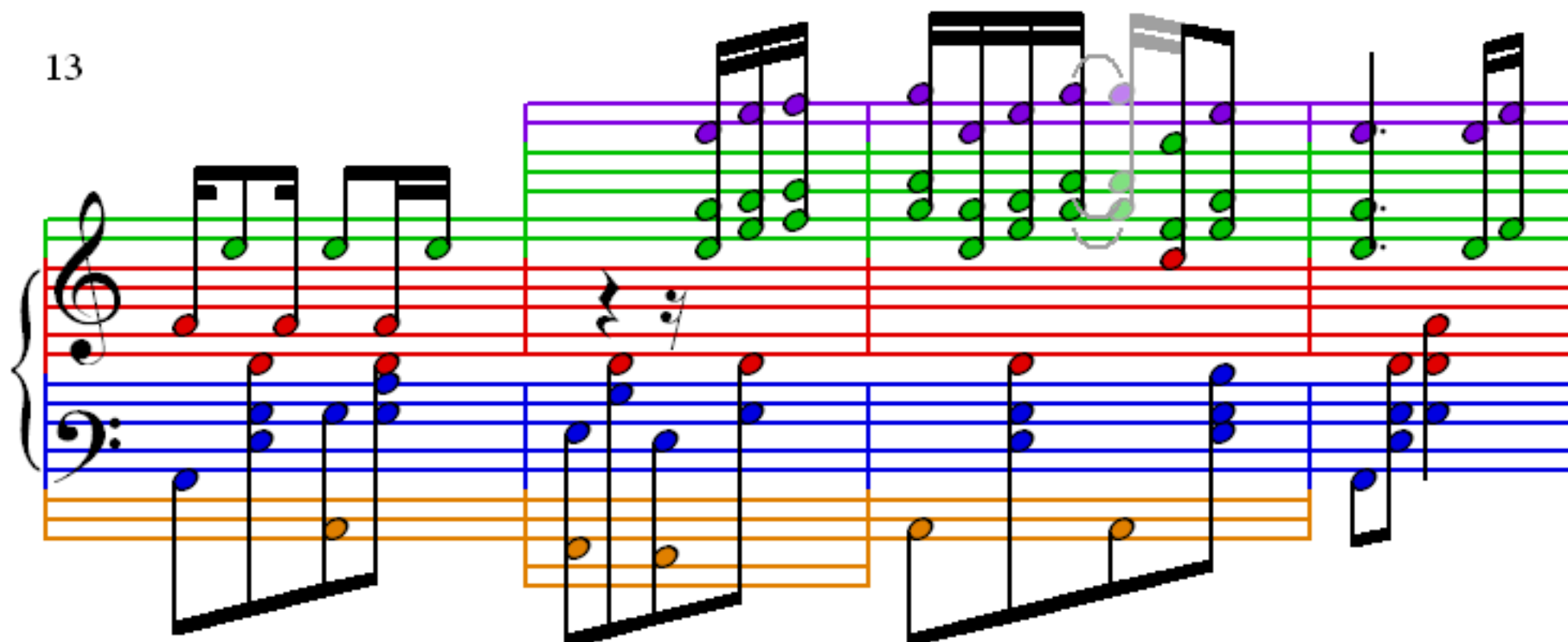
5

Measures 5-8 of the piano score. The melody continues with syncopated rhythms and triplets. The left hand maintains a consistent eighth-note bass line. The color-coding remains consistent with the first system.

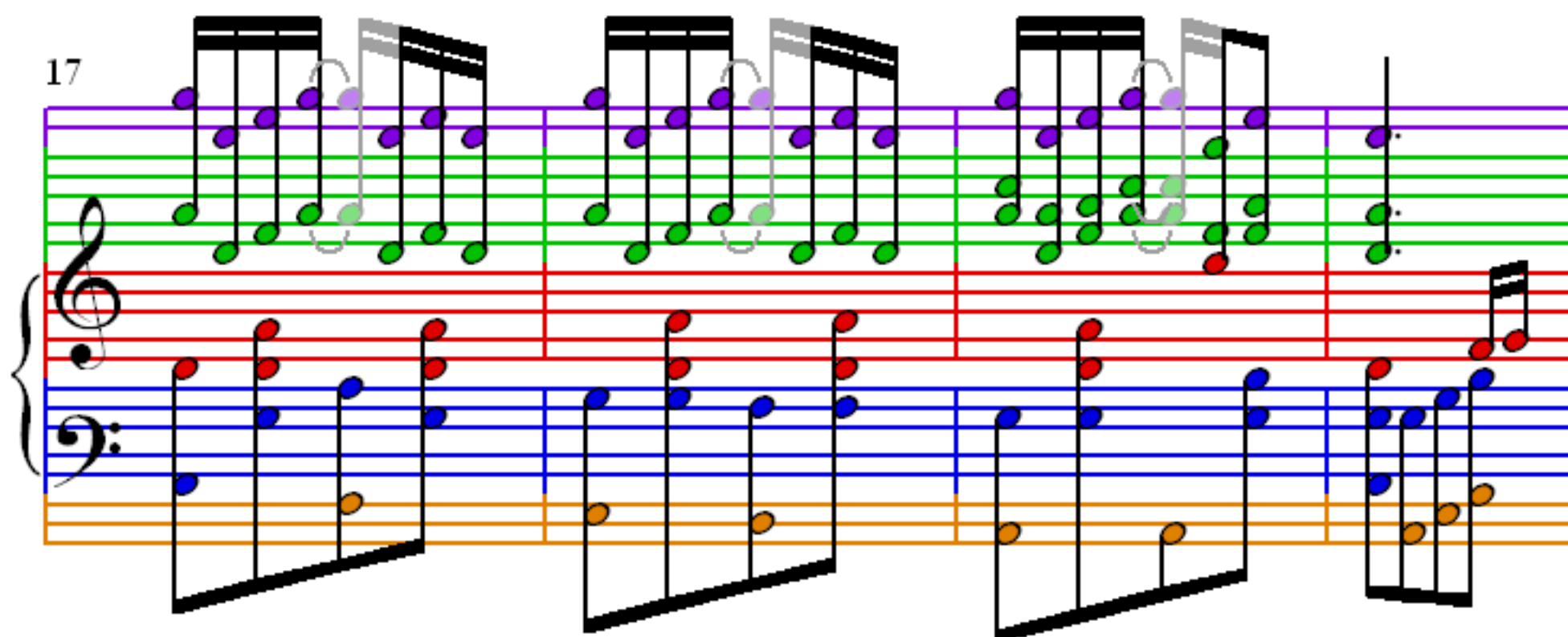
9

Measures 9-12 of the piano score. The piece concludes with a final measure featuring a triplet in the right hand. The color-coding remains consistent throughout the score.

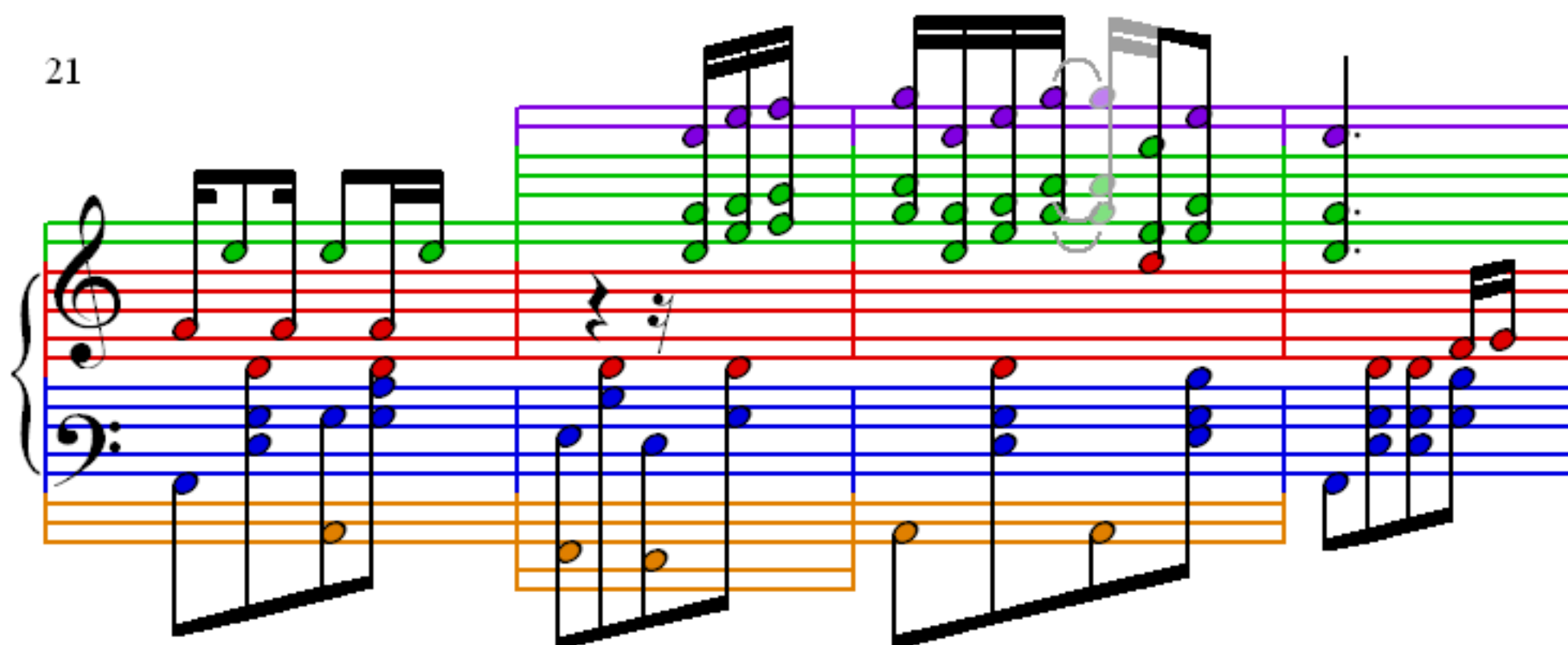
13



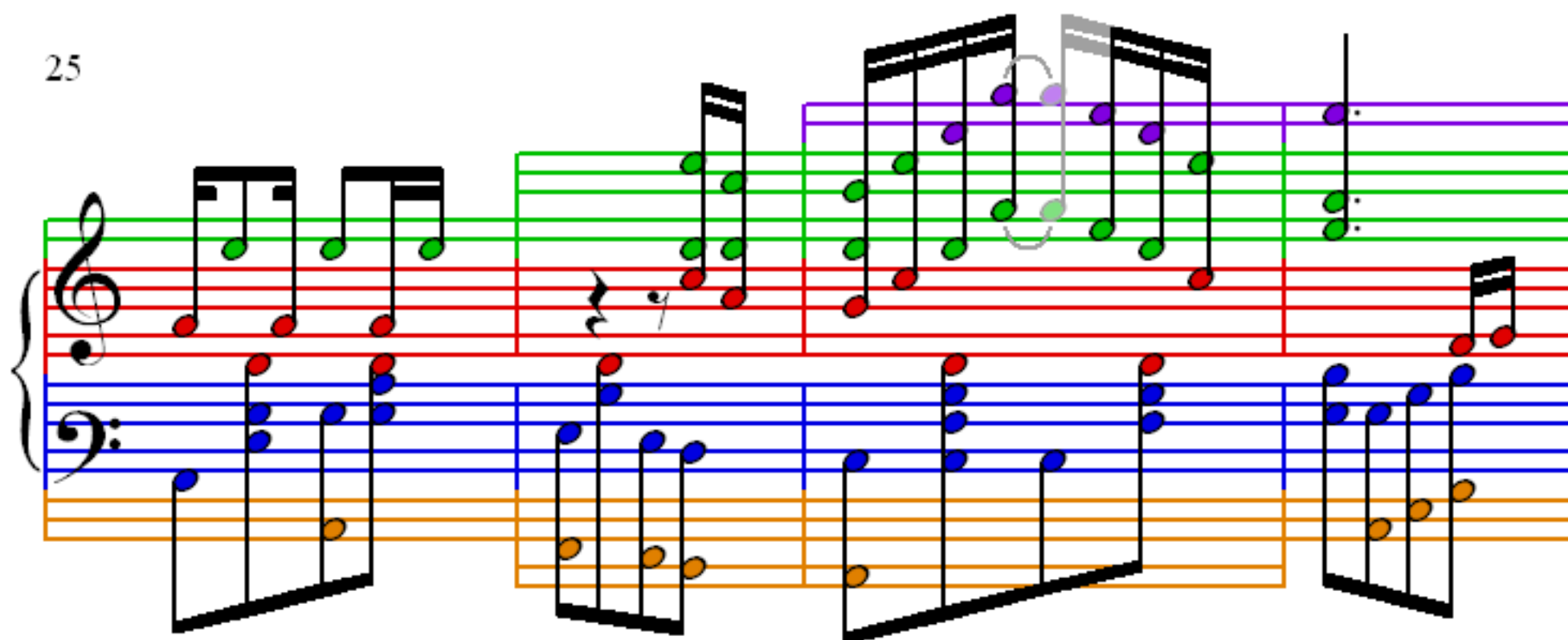
17



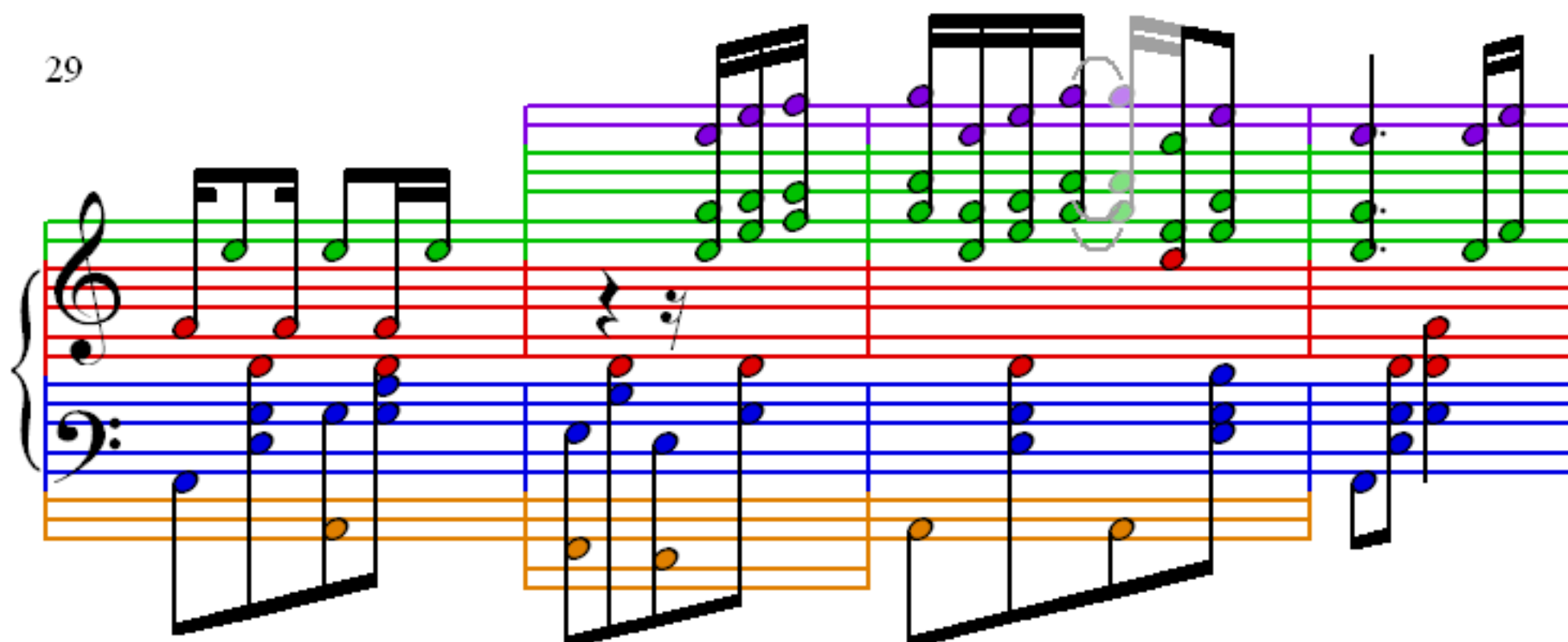
21



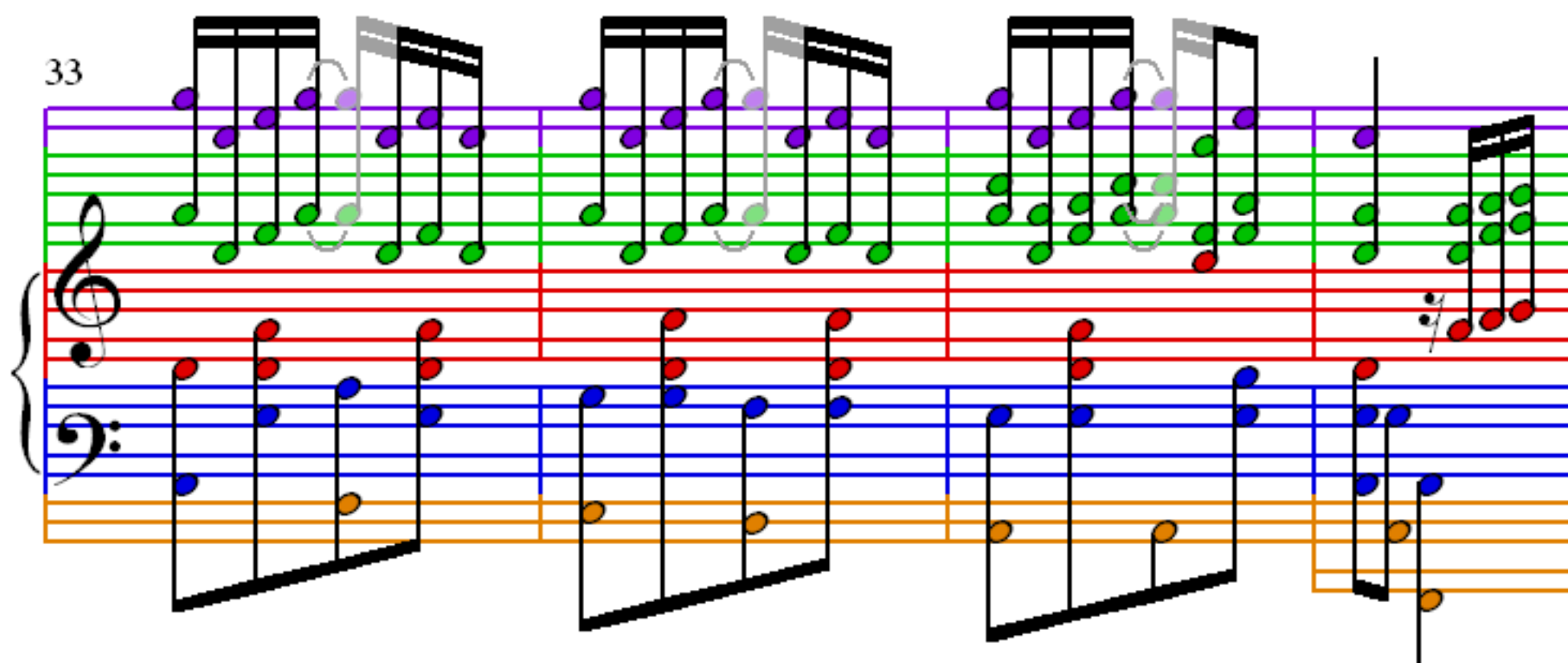
25



29



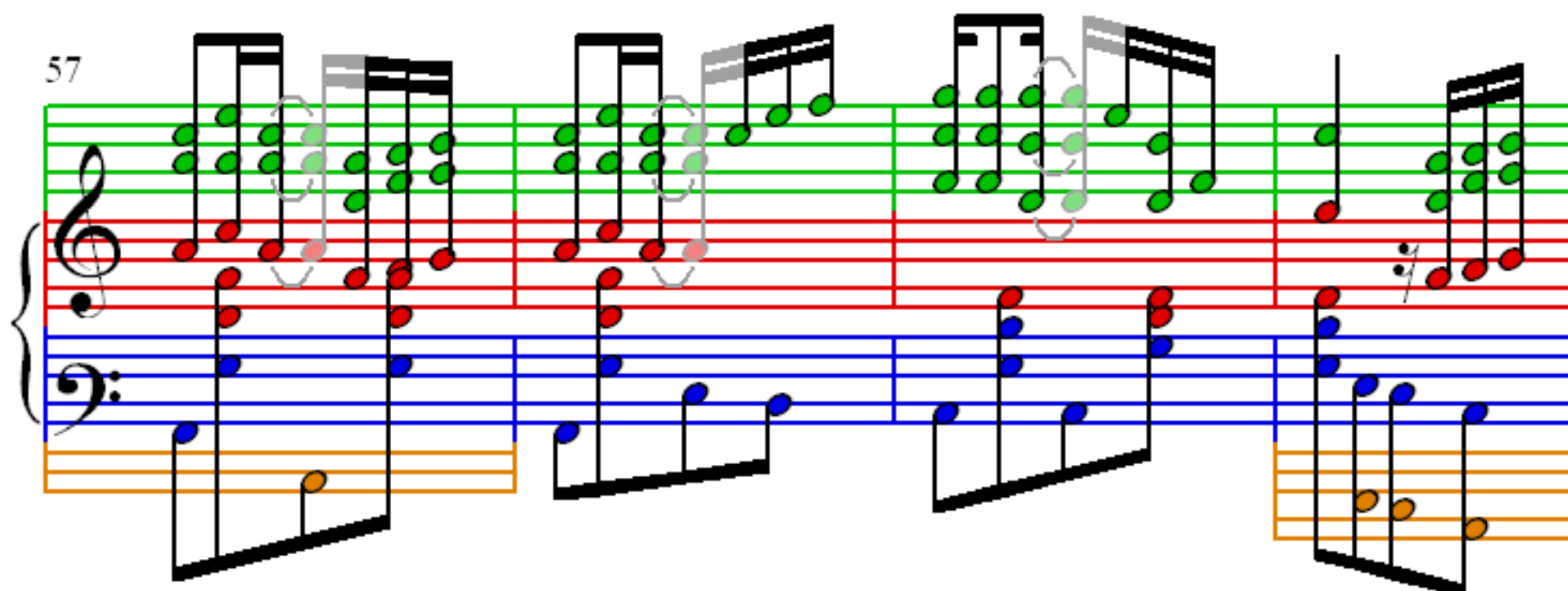
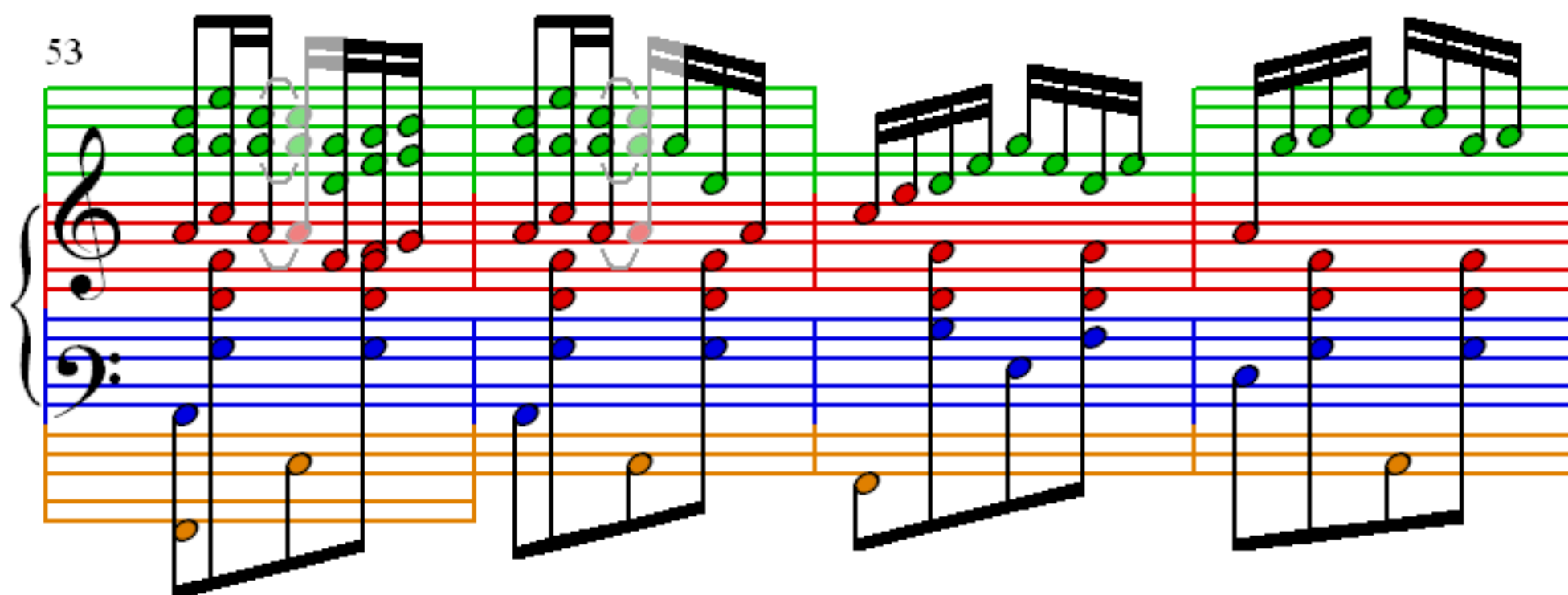
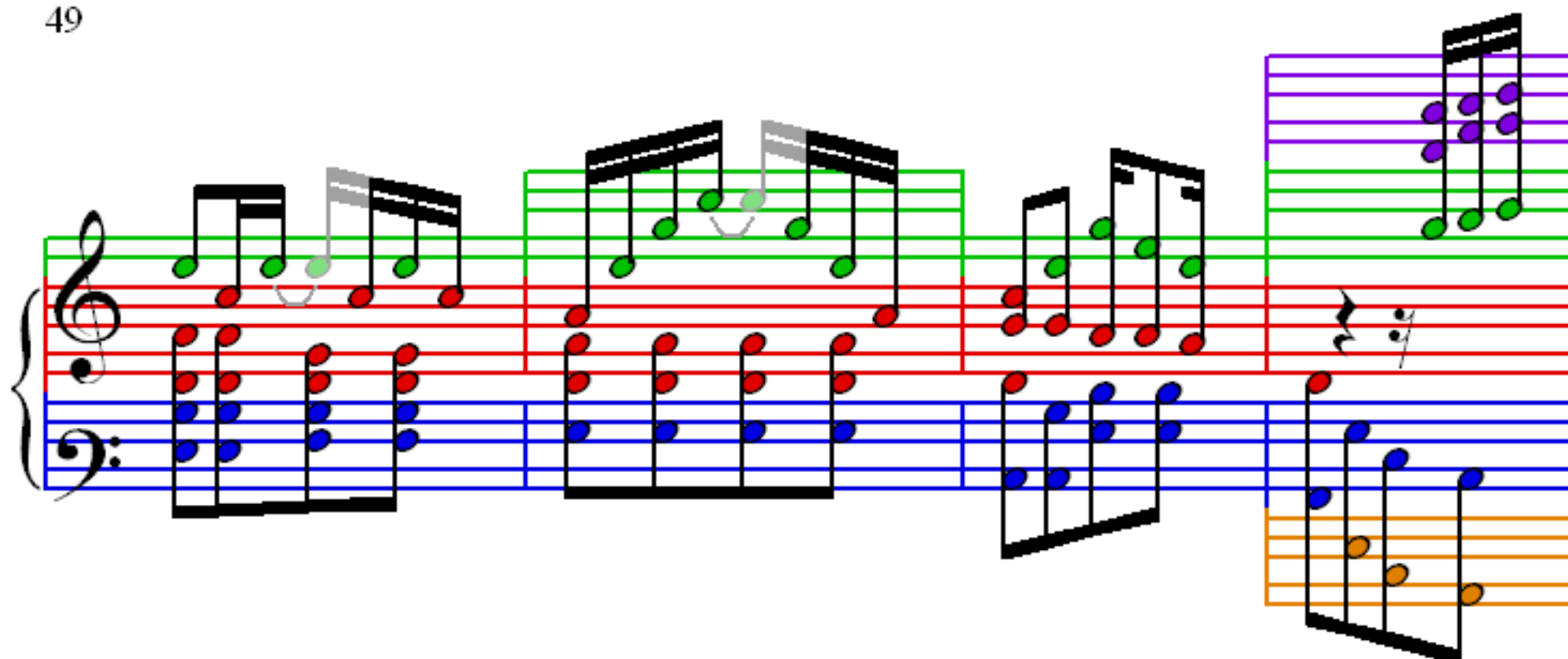
33



37

41

45

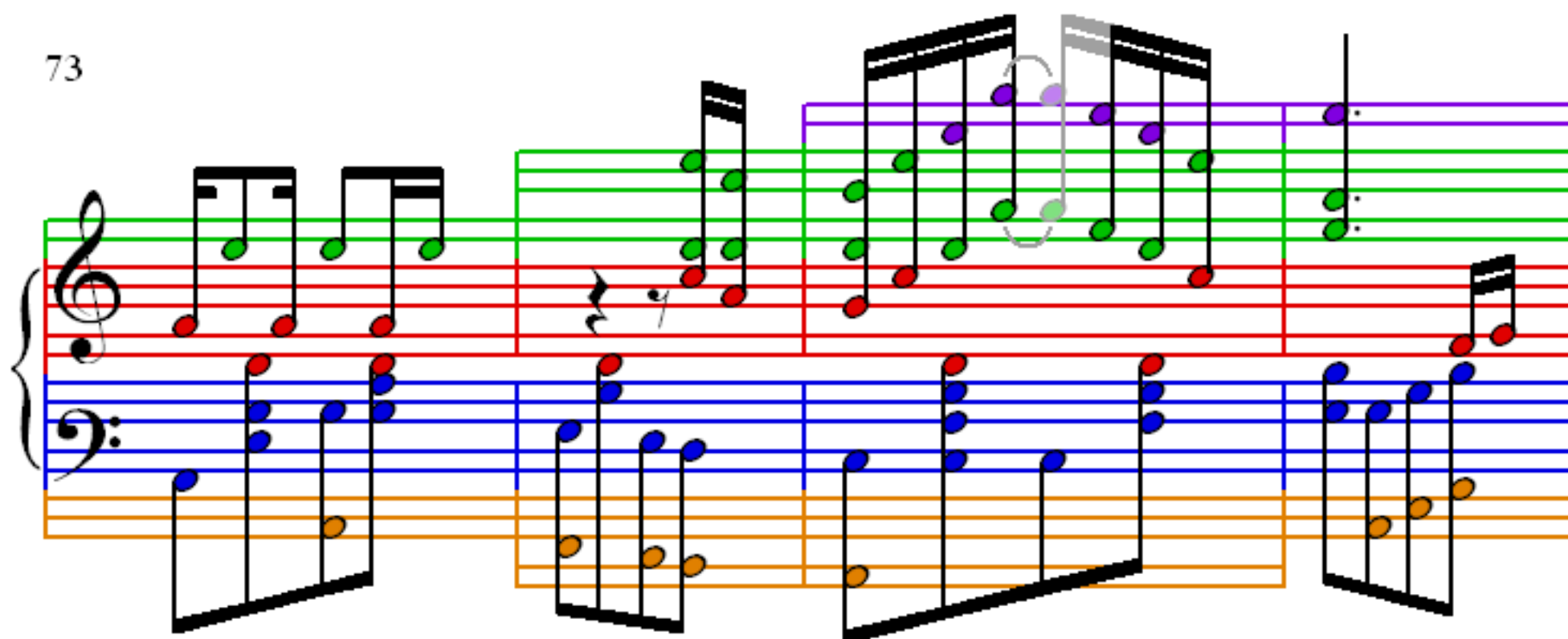


61

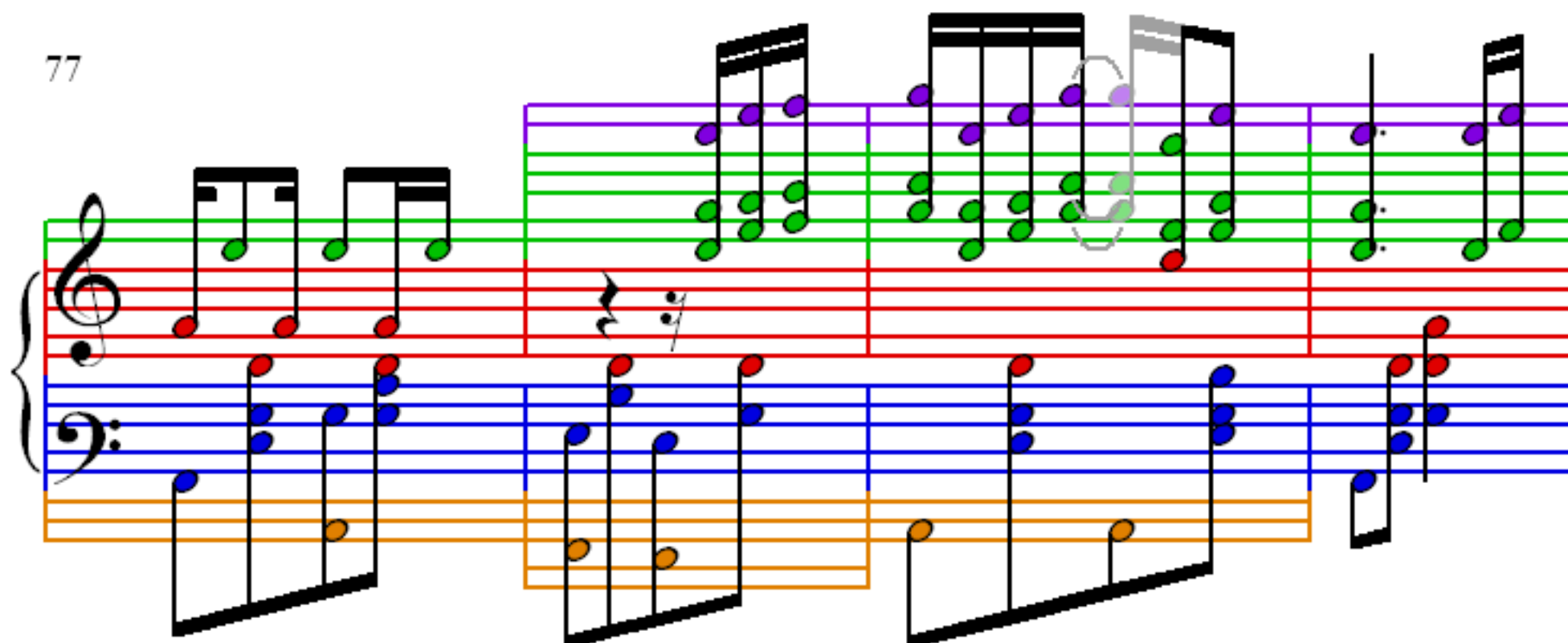
65

69

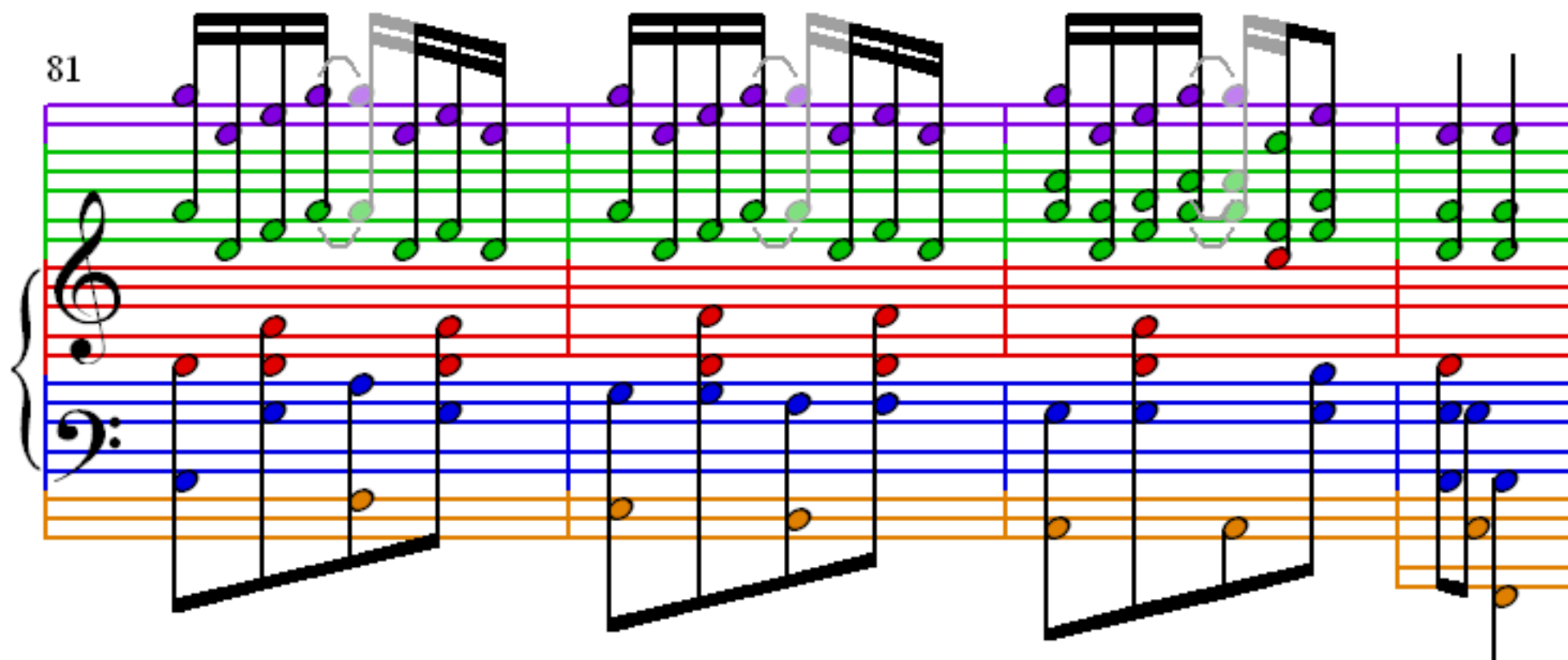
73



77



81



85

Measures 85-88 of a musical score. The score is written for a grand staff (treble and bass clefs) with a key signature of one flat (B-flat). The melody is in the treble clef, and the accompaniment is in the bass clef. The melody consists of eighth and sixteenth notes, with some measures featuring beamed sixteenth notes. The accompaniment consists of eighth and sixteenth notes, with some measures featuring beamed sixteenth notes. The notes are color-coded: green for the melody, red for the bass line, blue for the bass line, and orange for the bass line. The measures are grouped by vertical bar lines.

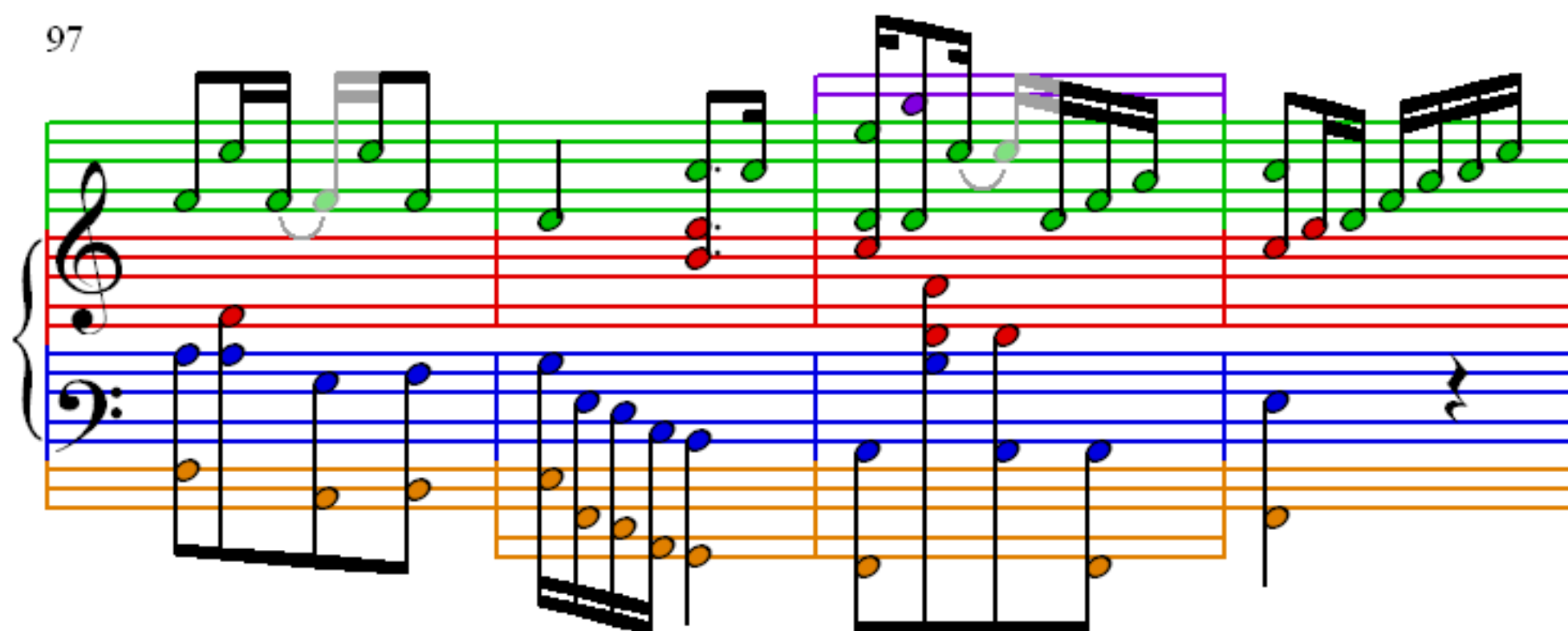
89

Measures 89-92 of a musical score. The score is written for a grand staff (treble and bass clefs) with a key signature of one flat (B-flat). The melody is in the treble clef, and the accompaniment is in the bass clef. The melody consists of eighth and sixteenth notes, with some measures featuring beamed sixteenth notes. The accompaniment consists of eighth and sixteenth notes, with some measures featuring beamed sixteenth notes. The notes are color-coded: green for the melody, red for the bass line, blue for the bass line, and orange for the bass line. The measures are grouped by vertical bar lines.

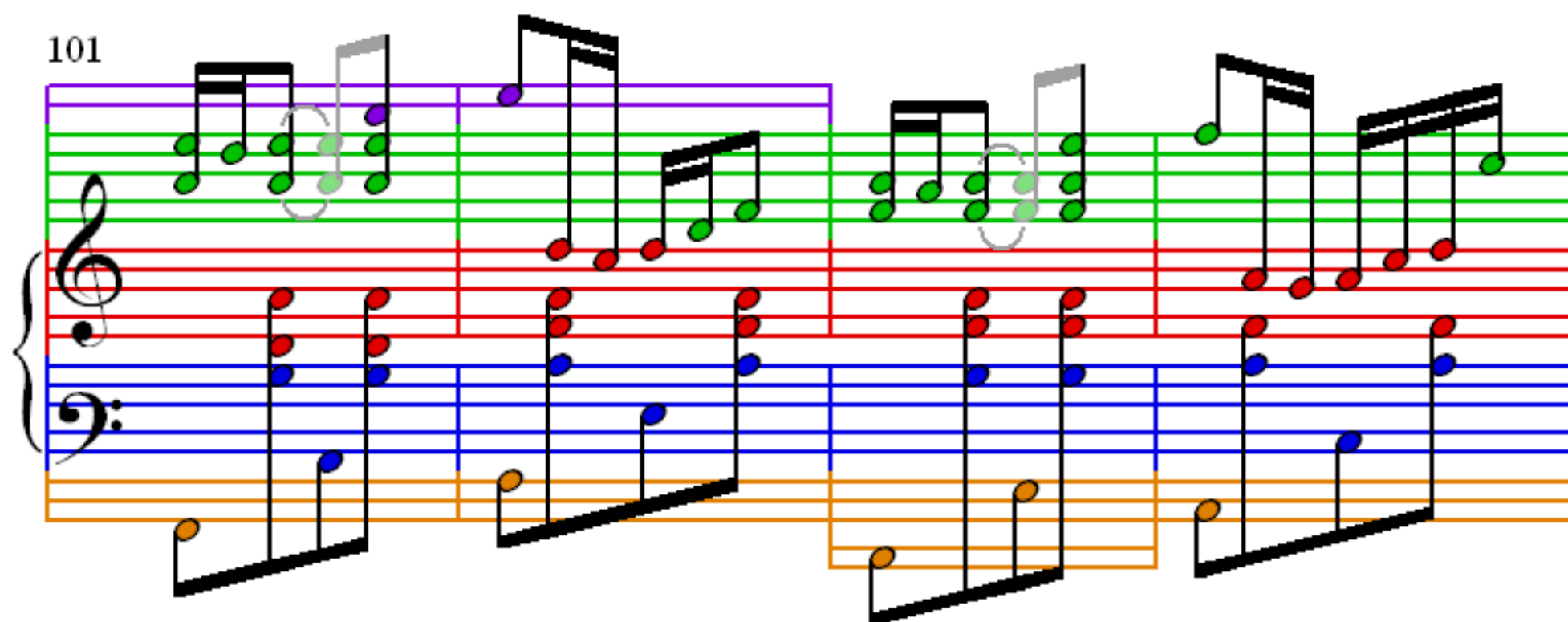
93

Measures 93-96 of a musical score. The score is written for a grand staff (treble and bass clefs) with a key signature of one flat (B-flat). The melody is in the treble clef, and the accompaniment is in the bass clef. The melody consists of eighth and sixteenth notes, with some measures featuring beamed sixteenth notes. The accompaniment consists of eighth and sixteenth notes, with some measures featuring beamed sixteenth notes. The notes are color-coded: green for the melody, red for the bass line, blue for the bass line, and orange for the bass line. The measures are grouped by vertical bar lines.

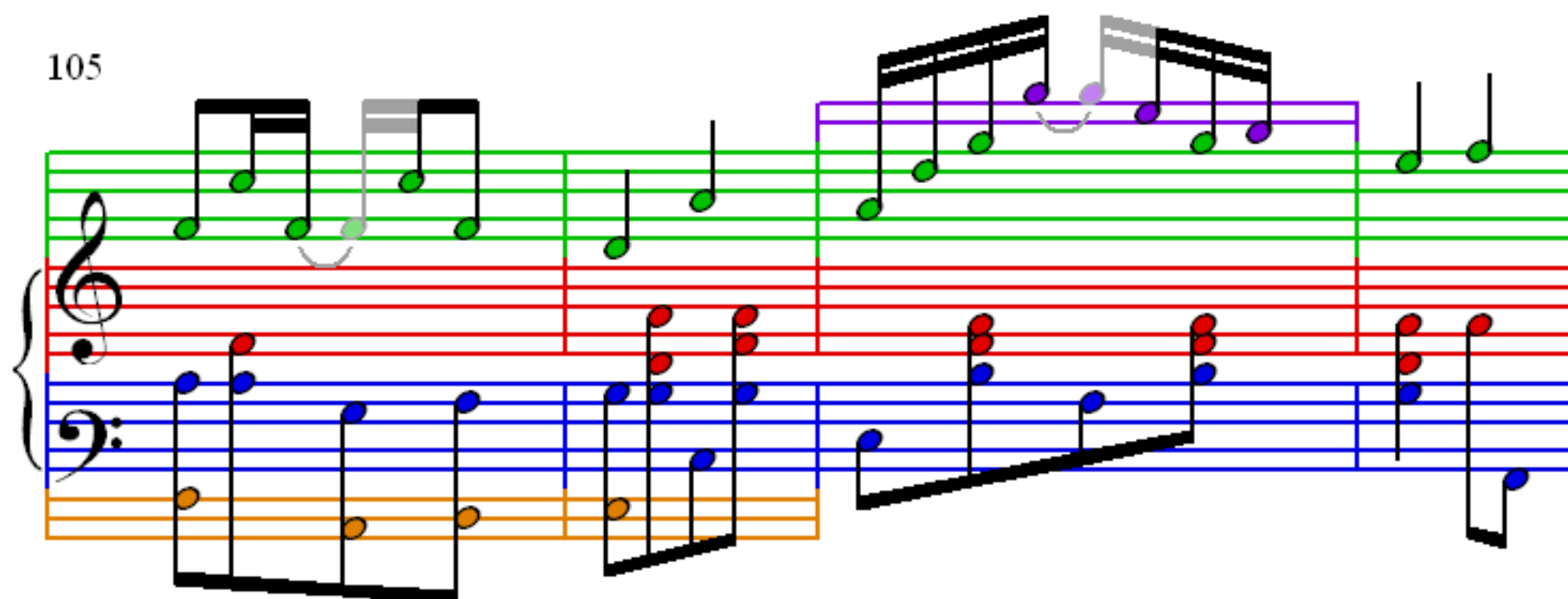
97



101



105



109

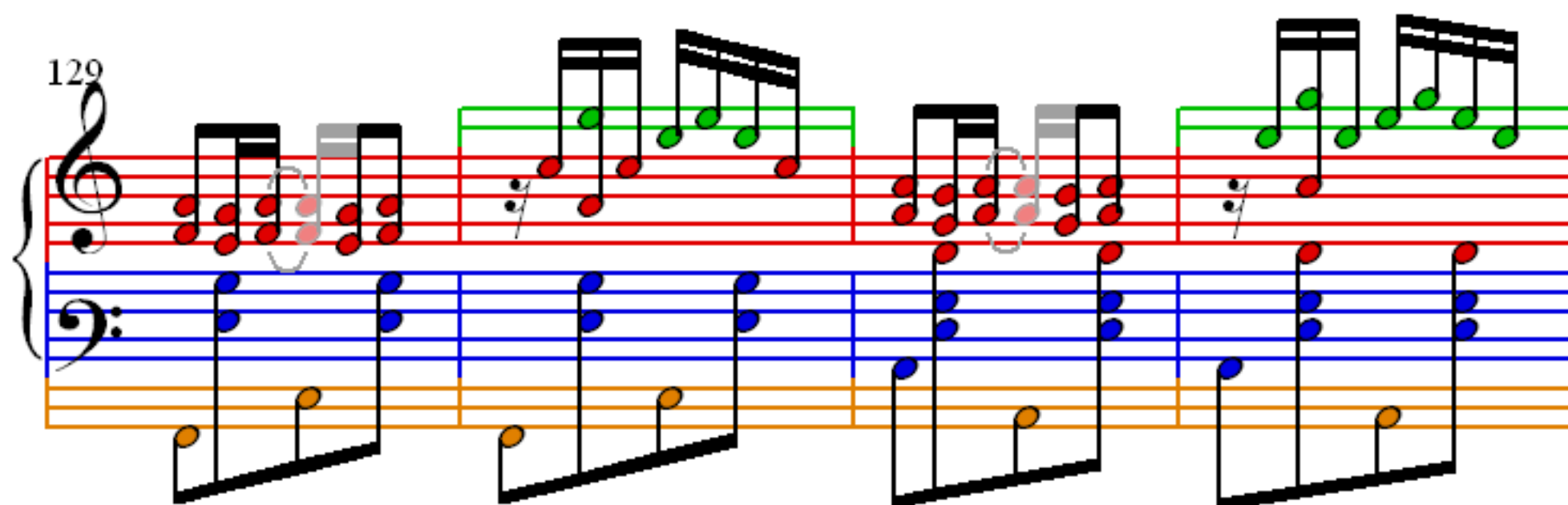
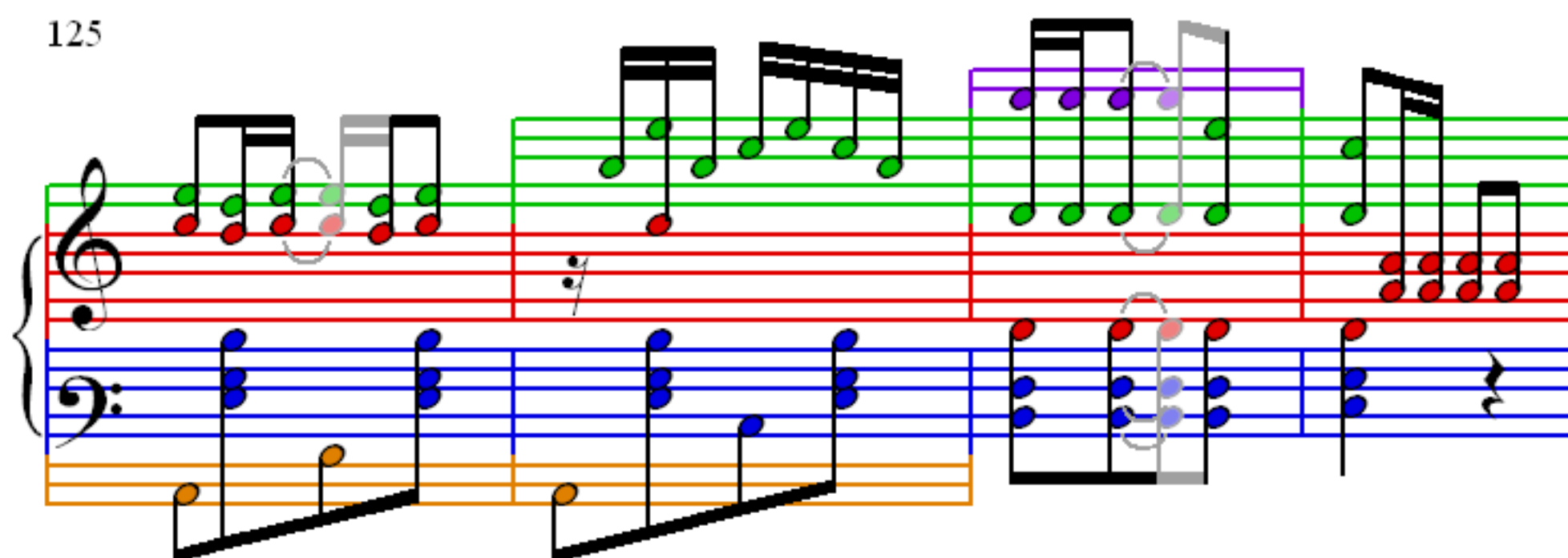
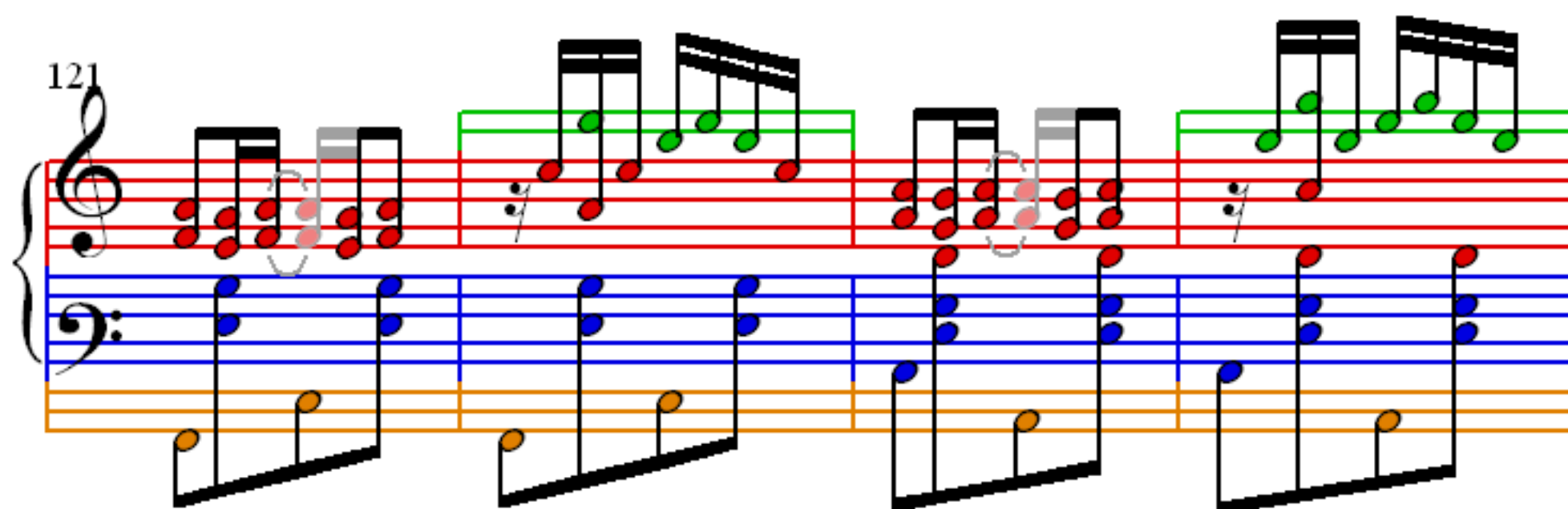
Measures 109-112 of a musical score. The score is written for piano (p) and features a treble and bass staff. The treble staff has a green line and a red line. The bass staff has a blue line and an orange line. The music consists of eighth and sixteenth notes, with some measures containing beamed sixteenth notes. The notes are colored green, red, blue, and orange. The measures are grouped by vertical bar lines.

113

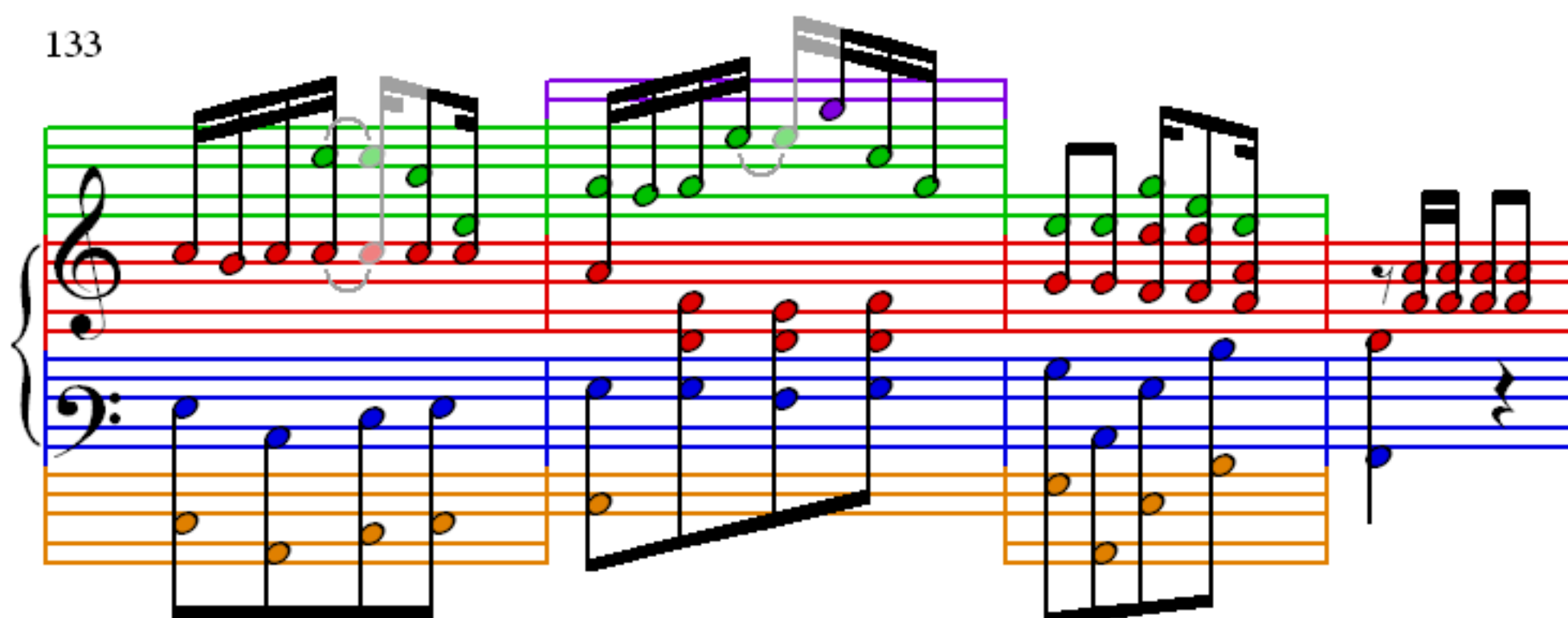
Measures 113-116 of a musical score. The score is written for piano (p) and features a treble and bass staff. The treble staff has a green line and a red line. The bass staff has a blue line and an orange line. The music consists of eighth and sixteenth notes, with some measures containing beamed sixteenth notes. The notes are colored green, red, blue, and orange. The measures are grouped by vertical bar lines.

117

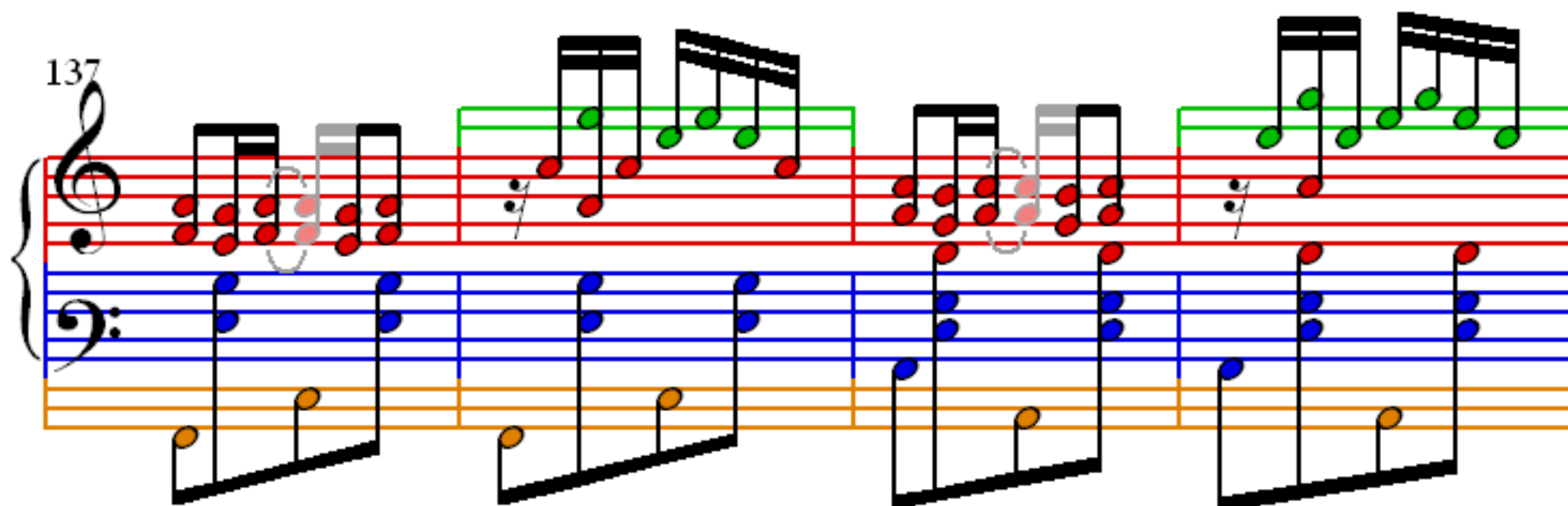
Measures 117-120 of a musical score. The score is written for piano (p) and features a treble and bass staff. The treble staff has a green line and a red line. The bass staff has a blue line and an orange line. The music consists of eighth and sixteenth notes, with some measures containing beamed sixteenth notes. The notes are colored green, red, blue, and orange. The measures are grouped by vertical bar lines.



133



137



141

