

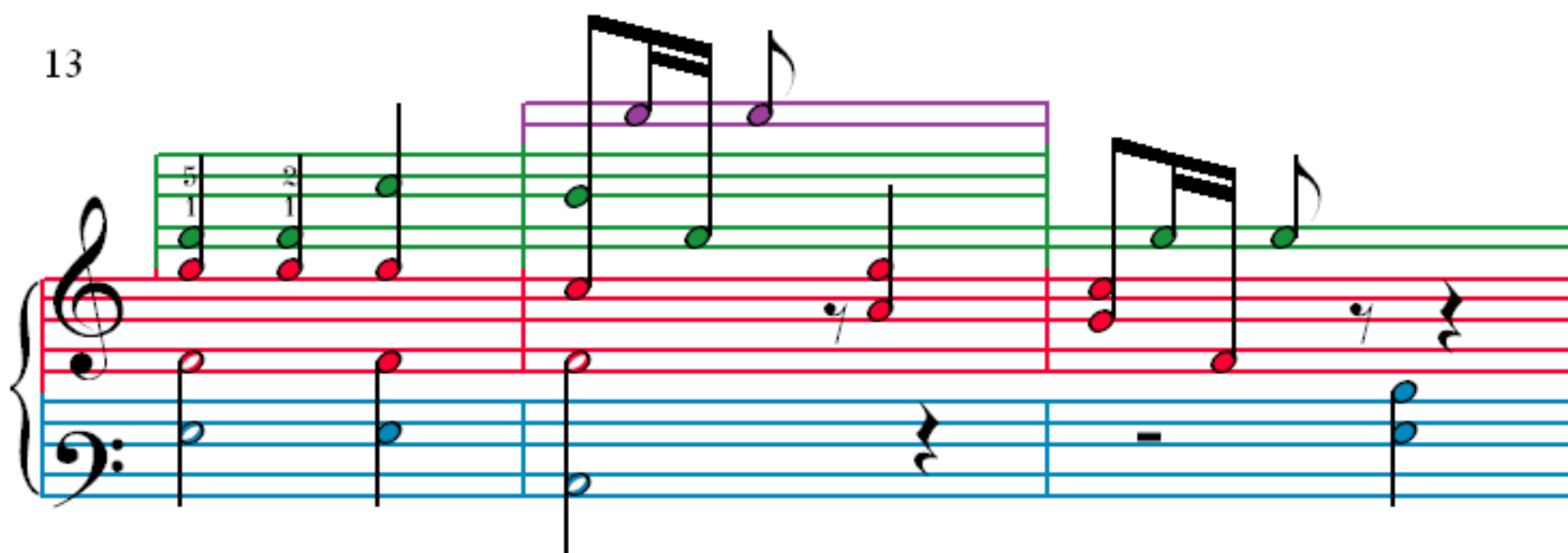
Lawn Party

K. Eagles

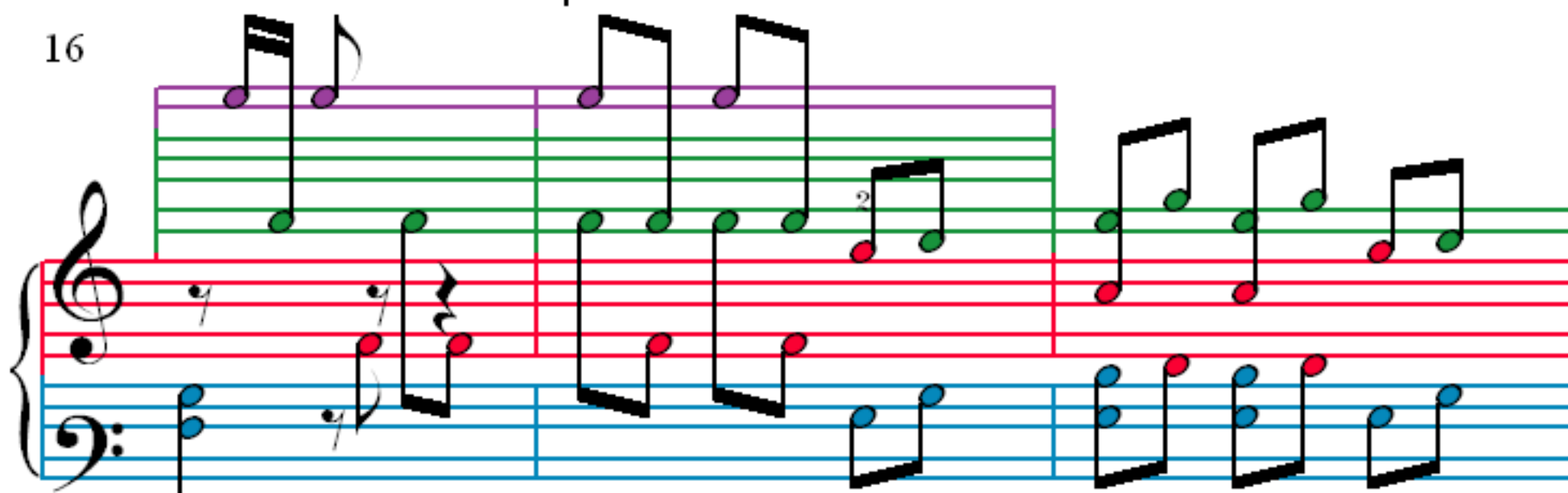
♩ = 120

The musical score for "Lawn Party" is written for piano and guitar in 3/4 time. The tempo is marked as ♩ = 120. The score is divided into four systems, each with a measure number (1, 4, 7, 10) at the beginning of the first staff. The piano part is in the left hand, and the guitar part is in the right hand. The piano part features a steady eighth-note accompaniment in the left hand and a melody in the right hand. The guitar part features a melody in the right hand and a bass line in the left hand. The score includes fingerings (1-5) and a key signature of one sharp (F#). The piano part is written on a grand staff (treble and bass clef), and the guitar part is written on a grand staff (treble and bass clef). The piano part has a key signature of one sharp (F#), and the guitar part has a key signature of one sharp (F#). The piano part is written on a grand staff (treble and bass clef), and the guitar part is written on a grand staff (treble and bass clef). The piano part has a key signature of one sharp (F#), and the guitar part has a key signature of one sharp (F#).

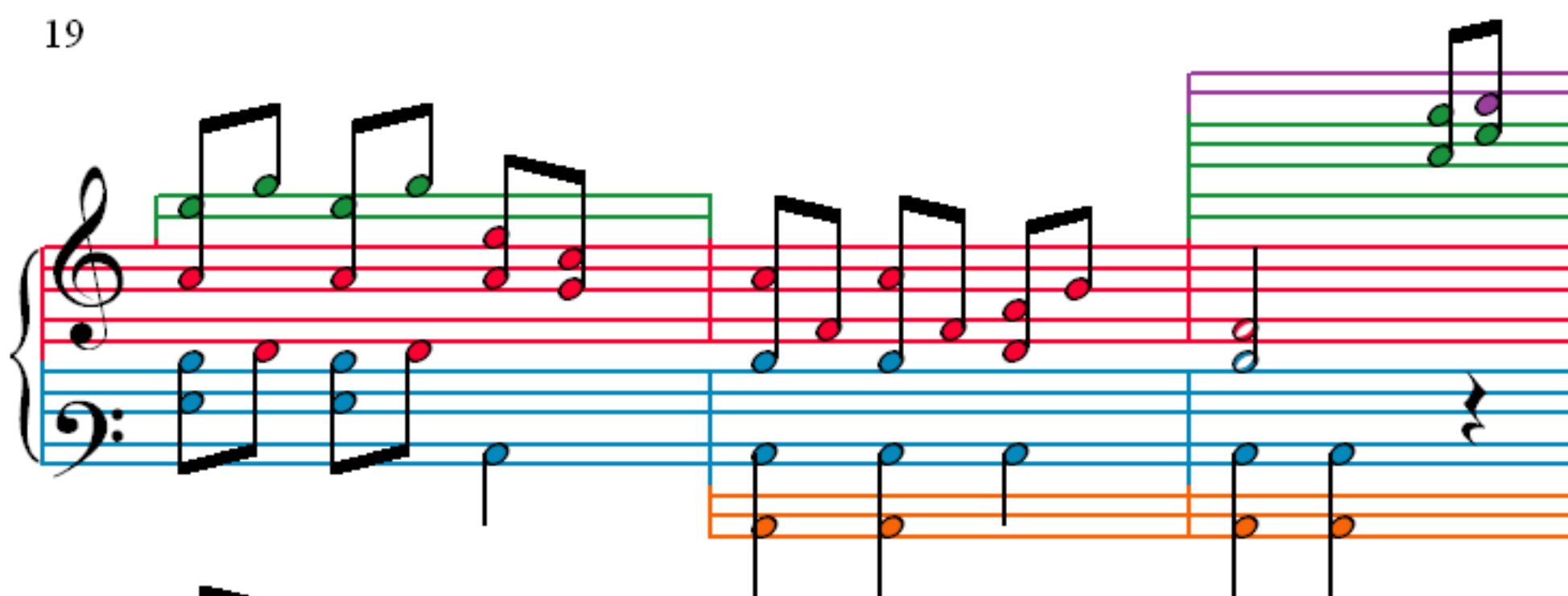
13



16



19



22

