

# Sensation

Joseph F. Lamb

1

3

5

7

The image displays a musical score for a piece titled "Sensation" by Joseph F. Lamb. The score is presented in four systems, each containing two staves (treble and bass clef). The notation is color-coded: green for the melody in the treble clef, red for the inner voices in the treble clef, blue for the bass line in the bass clef, and orange for the bass line in the bass clef. The key signature is one flat (B-flat) and the time signature is 4/4. The score is divided into measures by vertical bar lines. The first system shows measures 1 and 2, the second system shows measures 3 and 4, the third system shows measures 5 and 6, and the fourth system shows measures 7 and 8. The notation includes various musical symbols such as notes, rests, and accidentals. The piece is written in a style that is both melodic and harmonic, with a clear focus on the bass line.

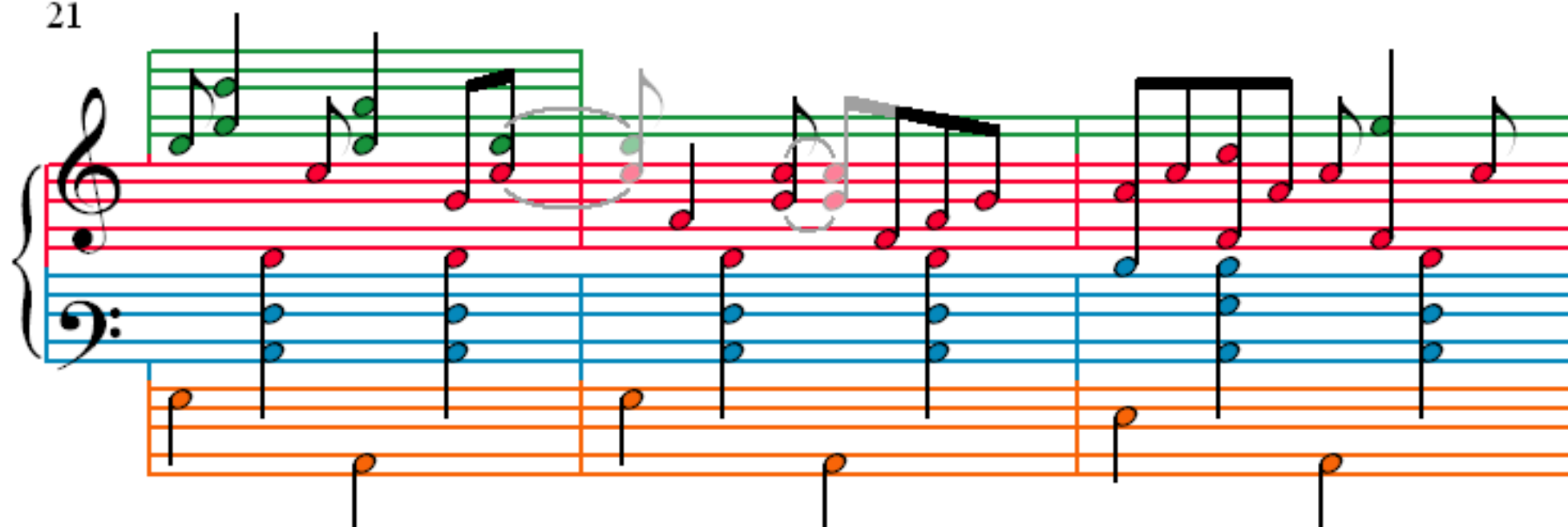
9

12

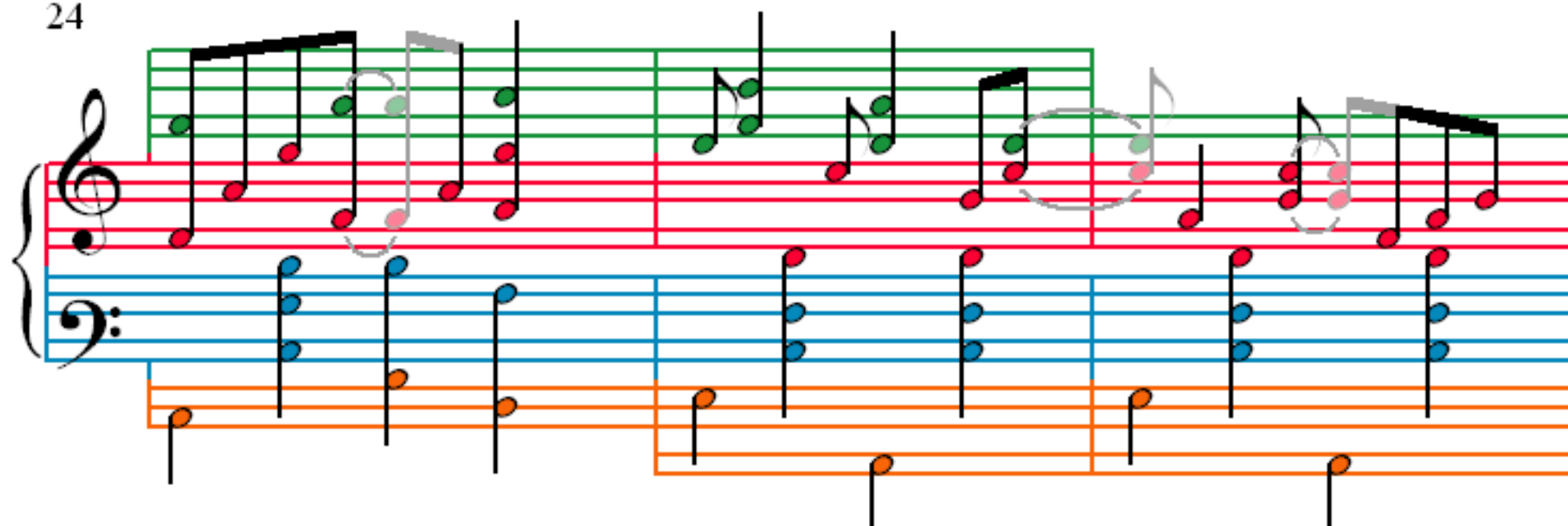
15

18

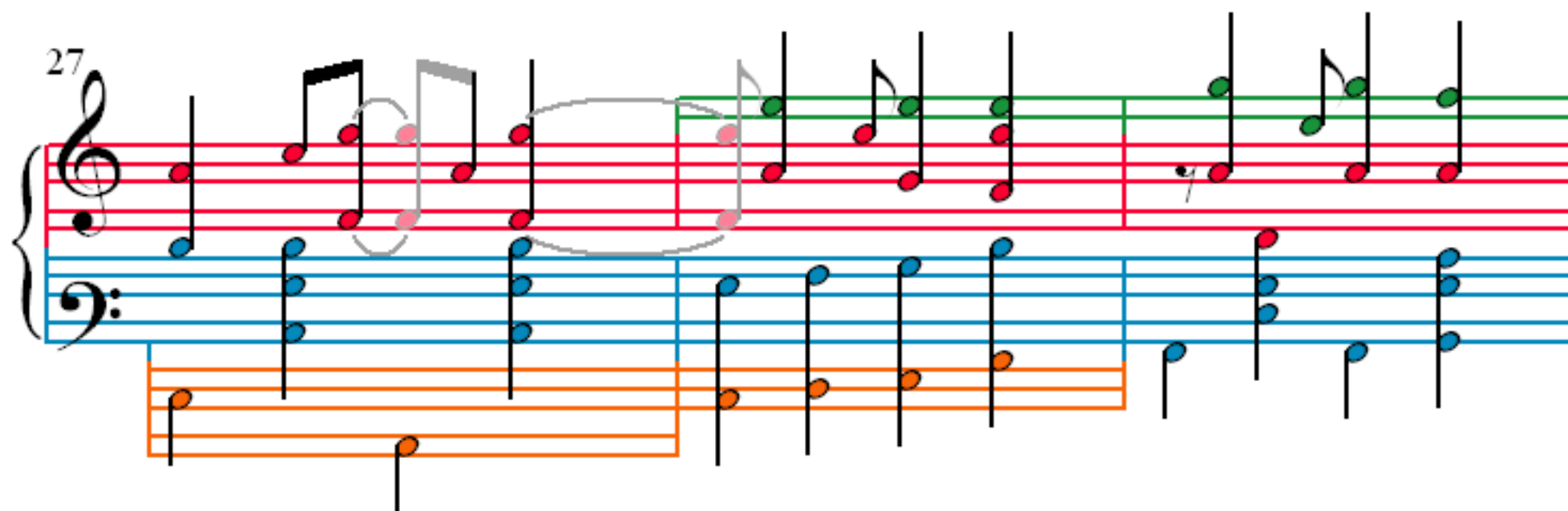
21



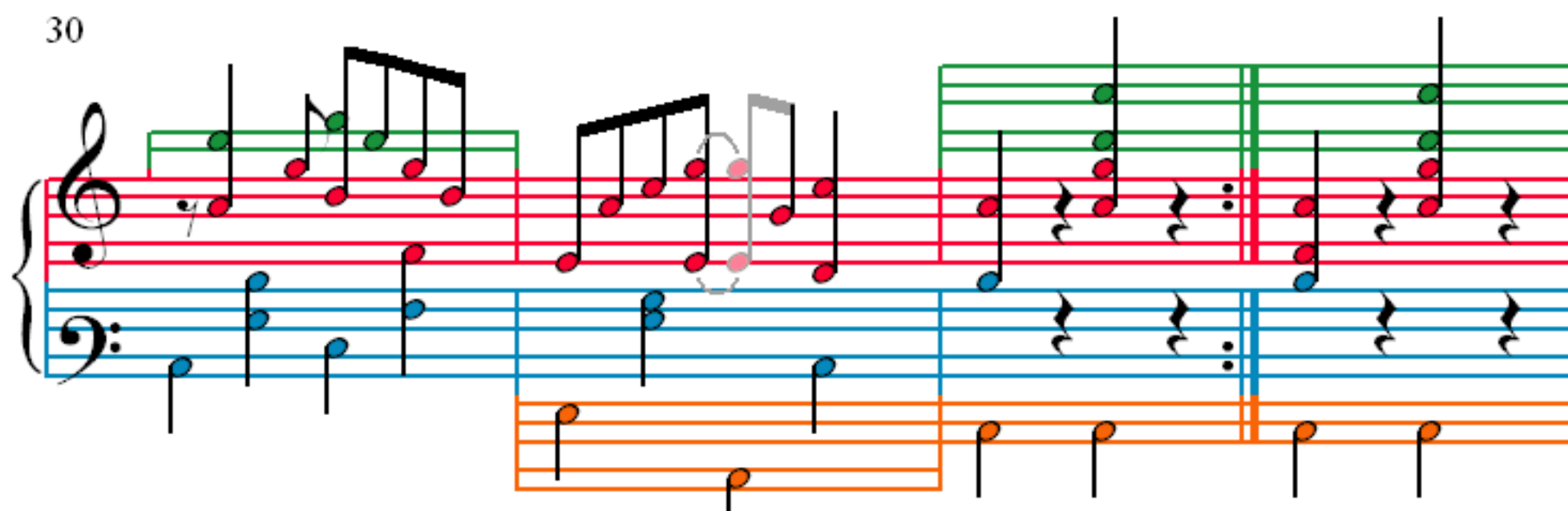
24



27



30



34

34

37

40

[illegible]

43

43

The musical score for Example 43 consists of four staves. The top staff is green, the second is red, the third is blue, and the bottom is orange. The score is divided into three measures by vertical bar lines. The first measure shows a complex chordal structure in the green and red staves, with a circled group of notes. The second measure shows a similar structure. The third measure shows a different chordal structure. The blue and orange staves provide a harmonic foundation with sustained notes and moving lines.

46

47

48

49

50

51

52

53

54

The image shows a musical score for Example 10.14, which is a piano accompaniment for a vocal line. The score is in 4/4 time and consists of three measures. The vocal line is on a single staff with a treble clef, and the piano accompaniment is on two staves (treble and bass clefs). The piano part features a steady eighth-note accompaniment in the right hand and a bass line in the left hand. The vocal line consists of a series of eighth notes, with some notes marked with a 'z' (possibly indicating a specific articulation or a typo for a note). The notes are color-coded: green for the first measure, red for the second, and blue for the third. The piano accompaniment is color-coded: red for the first measure, blue for the second, and orange for the third.

57

A musical score for the song 'The Rose Tree'. The score is written for voice and piano. The voice part is on a single staff with a treble clef. The piano accompaniment consists of two staves: the upper staff is in treble clef and the lower staff is in bass clef. The key signature has one flat (B-flat), and the time signature is 6/8. The score is divided into two systems. The first system contains measures 1 through 6, and the second system contains measures 7 through 12. The lyrics are written below the voice staff. The piano part features a rhythmic pattern of eighth and sixteenth notes, with some chords. There are various musical notations including slurs, ties, and dynamic markings like 'p' (piano) and 'f' (forte). The score is color-coded with red, blue, and orange lines and notes.

63

Mystic Forest © 2012 David S. Jones

David S. Jones