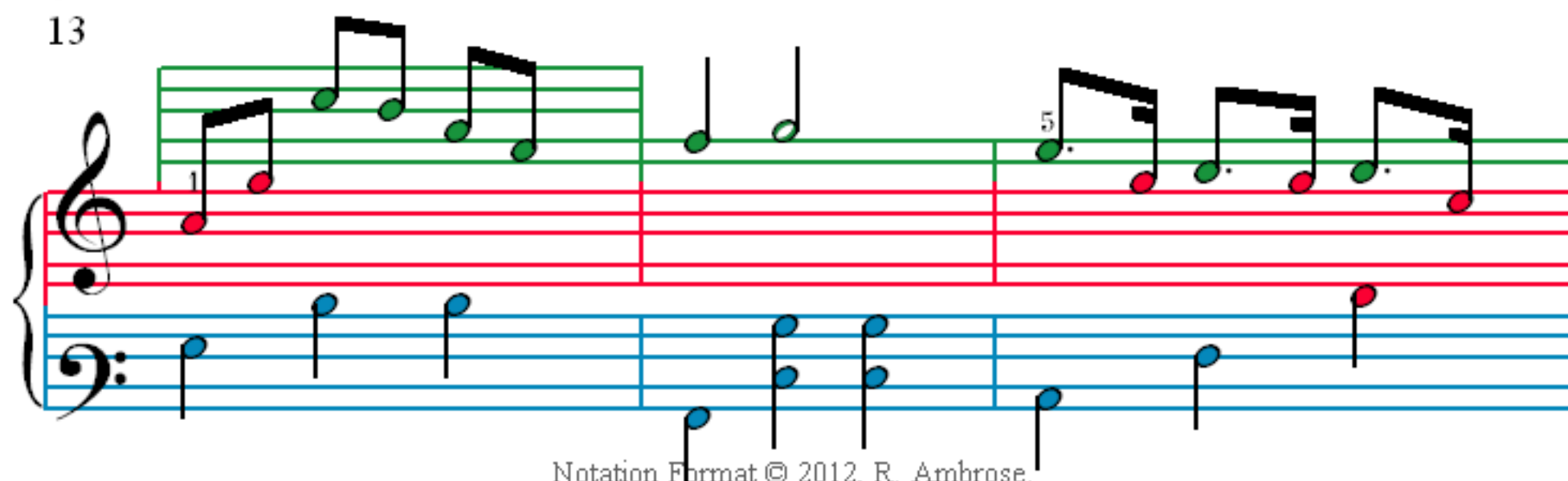
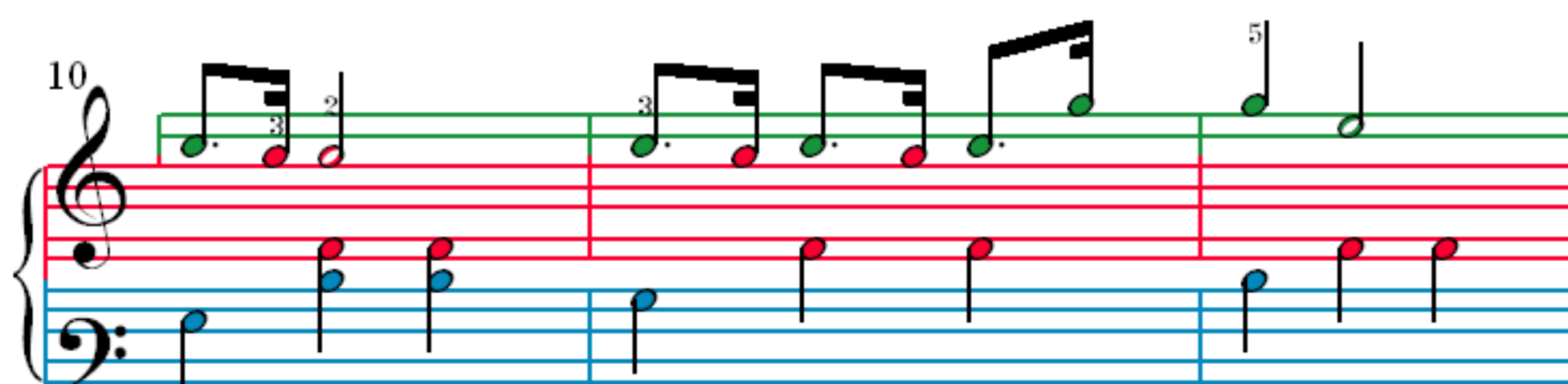
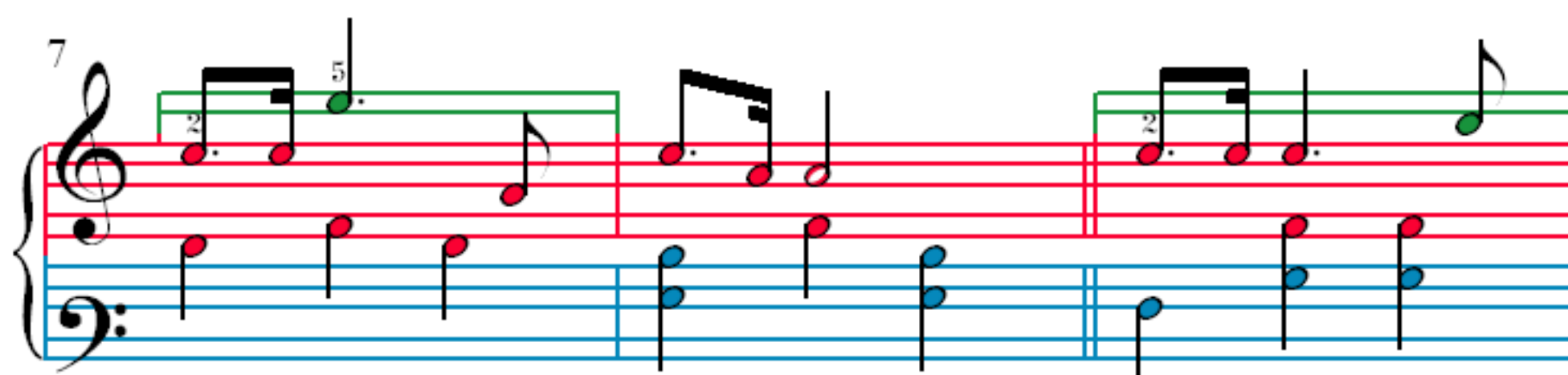
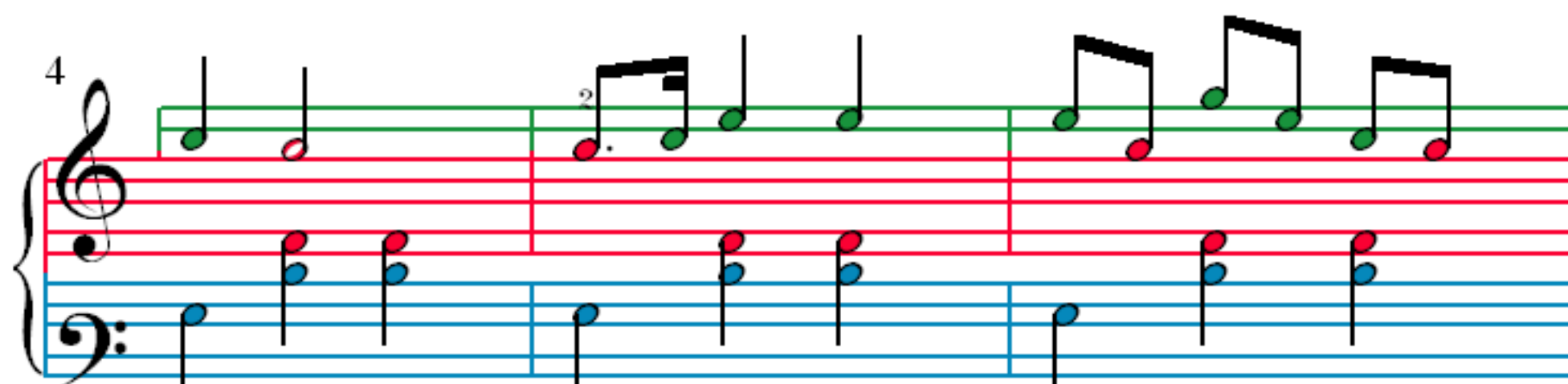
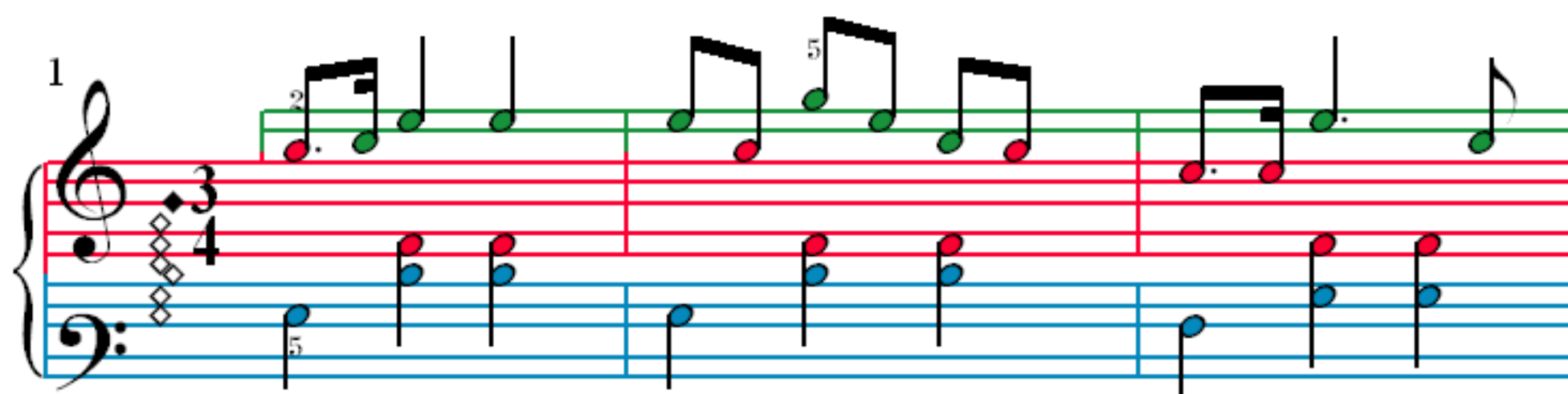


# Work Festive Dance Tune



16

The musical score for Example 16 consists of two systems. The first system contains measures 1-4, and the second system contains measures 5-8. The piano part is marked with a piano (p) dynamic. The vocal part is marked with a mezzo-soprano (ms) voice type. The score is written for a piano and a mezzo-soprano.

19

The image shows a musical score for Example 19, consisting of three staves. The top staff is purple and contains a sequence of notes: a purple note on the first line, followed by two green notes on the second line, then two black notes on the third line, and finally a green note on the fourth line. The middle staff is red and is empty. The bottom staff is blue and contains a sequence of notes: a blue note on the first line, followed by two red notes on the second line, then two blue notes on the third line, and finally two blue notes on the fourth line.

22

27

4

2

Handwritten musical score for 'The Rose Tree'. The score is written on three staves: a treble staff (green), a middle staff (red), and a bass staff (blue). The treble staff contains a melody with notes on lines 1, 2, 3, 4, and 5. The middle staff contains a bass line with notes on lines 1, 2, 3, 4, and 5. The bass staff contains a bass line with notes on lines 1, 2, 3, 4, and 5. The score is divided into measures by vertical bar lines. The first measure is marked with a '22' above the treble staff. The second measure is marked with a '27' above the treble staff. The third measure is marked with a '4' above the treble staff. The fourth measure is marked with a '2' above the treble staff. The score is written in a simple, handwritten style.

25

The musical score for Example 25 is written on a grand staff with three staves. The top staff is green, the middle is red, and the bottom is blue. The music consists of eighth and quarter notes. The first measure has a green eighth note on the top staff, a red quarter note on the middle staff, and a blue eighth note on the bottom staff. The second measure has a green quarter note on the top staff, a red quarter note on the middle staff, and a blue quarter note on the bottom staff. The third measure has a green quarter note on the top staff, a red quarter note on the middle staff, and a blue quarter note on the bottom staff.

28

The musical score for Example 28 is presented in three measures. The vocal line, written on a green staff, begins with a quarter note G4, followed by a quarter note A4, then a quarter note B4, and a quarter note C5. The piano accompaniment consists of two staves: a red staff (treble clef) and a blue staff (bass clef). In the first measure, the piano part plays a chord of G4 and B4 in the right hand, and a single note G3 in the left hand. In the second measure, the piano part plays a chord of A4 and C5 in the right hand, and a single note A3 in the left hand. In the third measure, the piano part plays a chord of B4 and D5 in the right hand, and a single note B3 in the left hand.

31

34

37

40

43

46

49

52

55

58

61

64

67

70

73

76

79

82

85

88

91

94

97

100

103

106

109

112

115

119