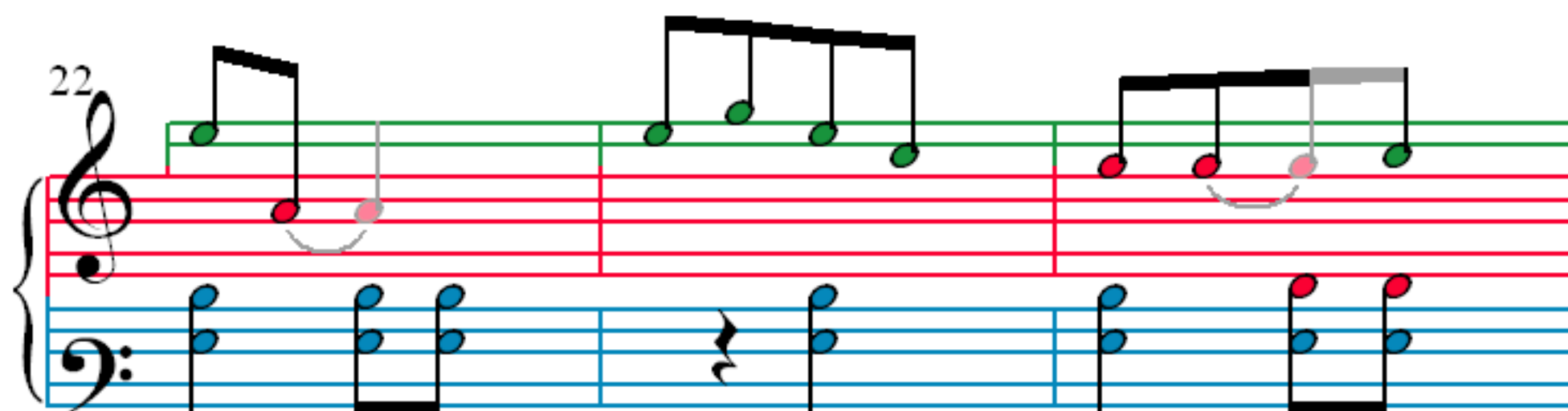
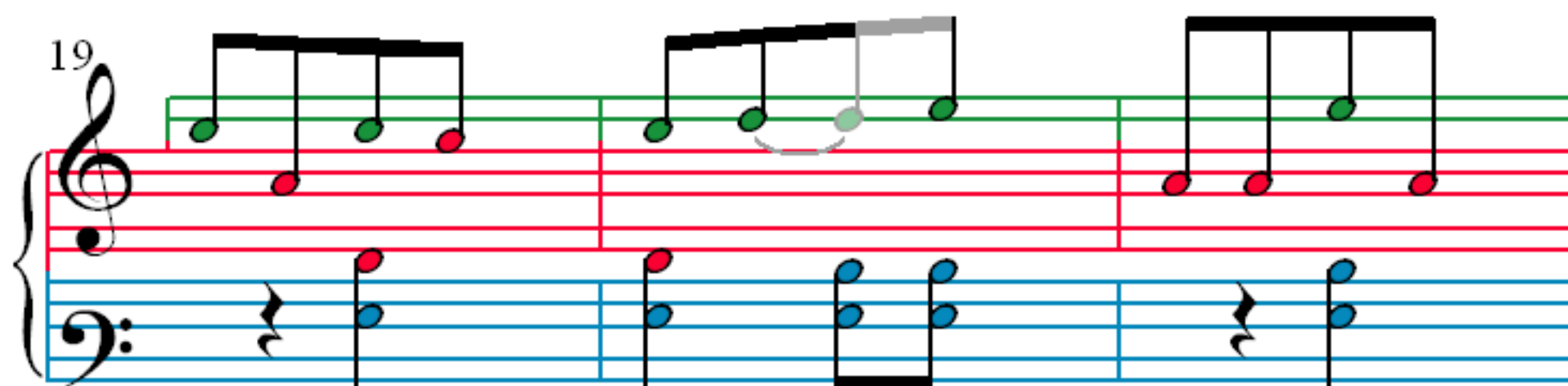
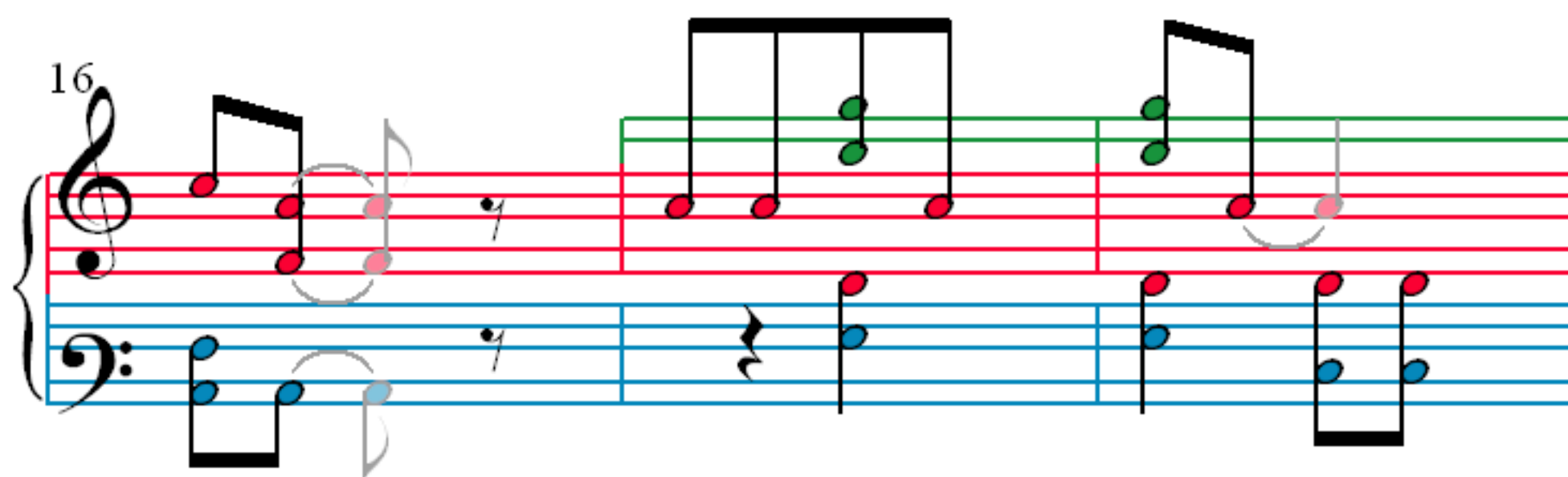
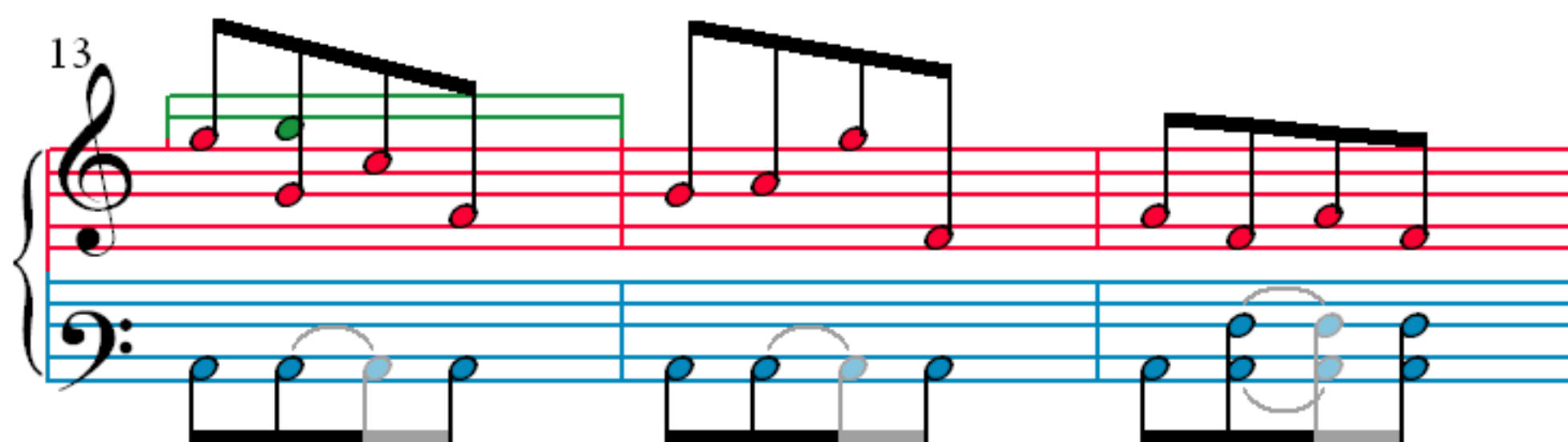


# Giselle - Pas de deux (1er Acte)

A. Adam (1803–1856)

The image displays a musical score for the first act of the ballet Giselle, specifically the Pas de deux. The score is written for piano and is organized into four systems, each containing two staves (treble and bass clef). The key signature is one sharp (F#) and the time signature is 2/4. The measures are numbered 1, 4, 7, and 10 at the beginning of each system. The notation includes various musical symbols such as notes, rests, and slurs. The notes are color-coded: red for the right hand (treble clef) and blue for the left hand (bass clef). Some notes are highlighted with green or grey backgrounds. The score shows a sequence of measures, with some measures containing multiple notes and others containing rests. The overall structure is a continuous piece of music.



25

28

31

34

37

Measures 37-39. Treble clef: Red notes, green staff above. Bass clef: Blue notes, grey staff below. Slurs connect notes across measures.

40

Measures 40-42. Treble clef: Red notes, green staff above. Bass clef: Blue notes, grey staff below. Slurs connect notes across measures.

43

Measures 43-45. Treble clef: Red notes, green staff above. Bass clef: Blue notes, grey staff below. Slurs connect notes across measures.

46

Measures 46-48. Treble clef: Red notes, green staff above. Bass clef: Blue notes, grey staff below. Slurs connect notes across measures.