

Italian Concerto 3

BWV 971

J. S. Bach (1685–1750)

1

4

7

10

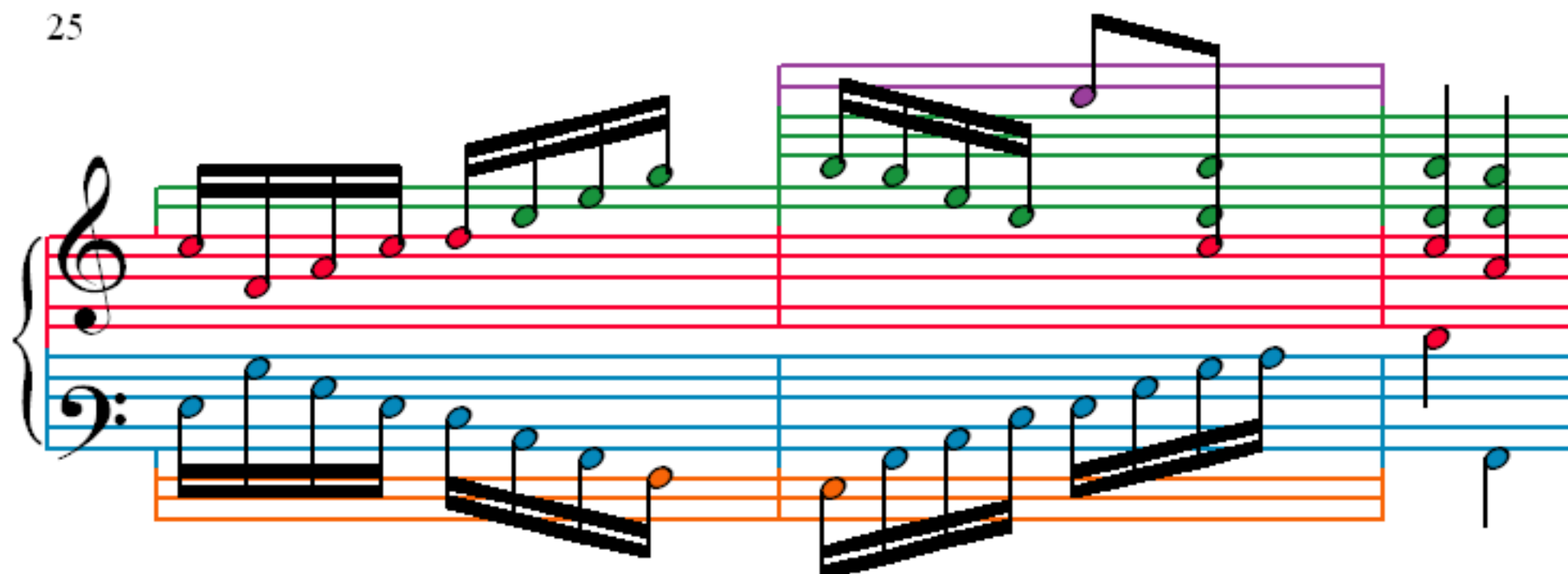
13

16

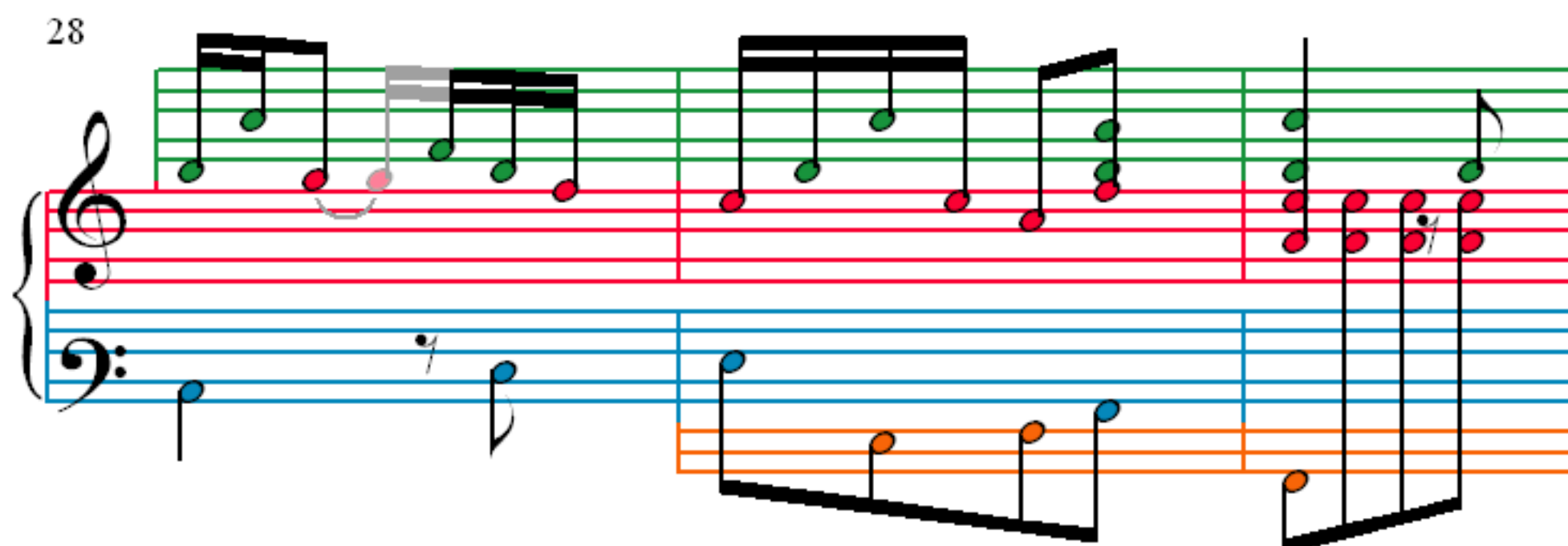
19

22

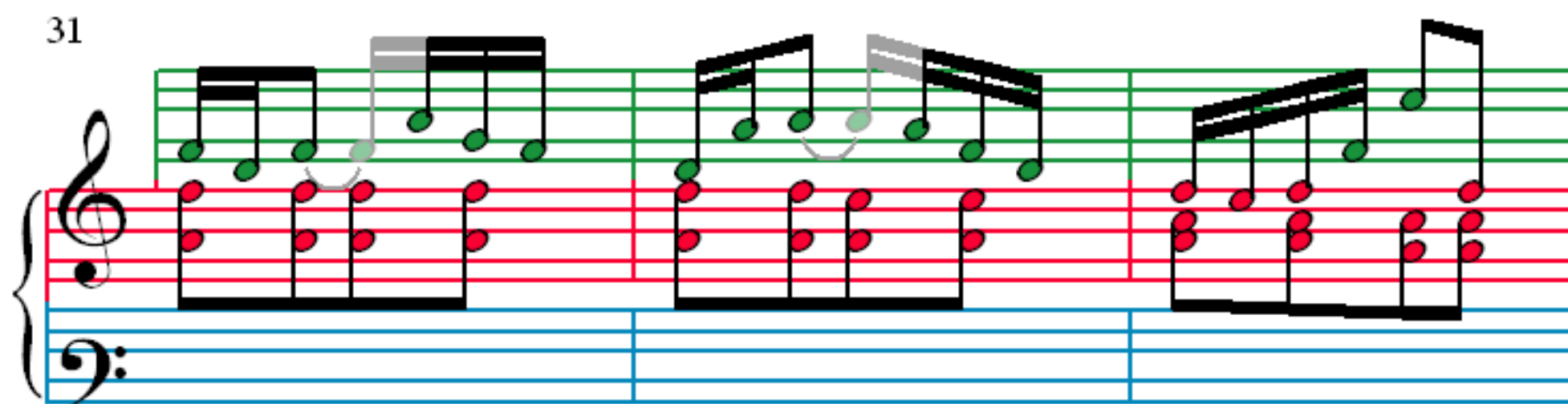
25



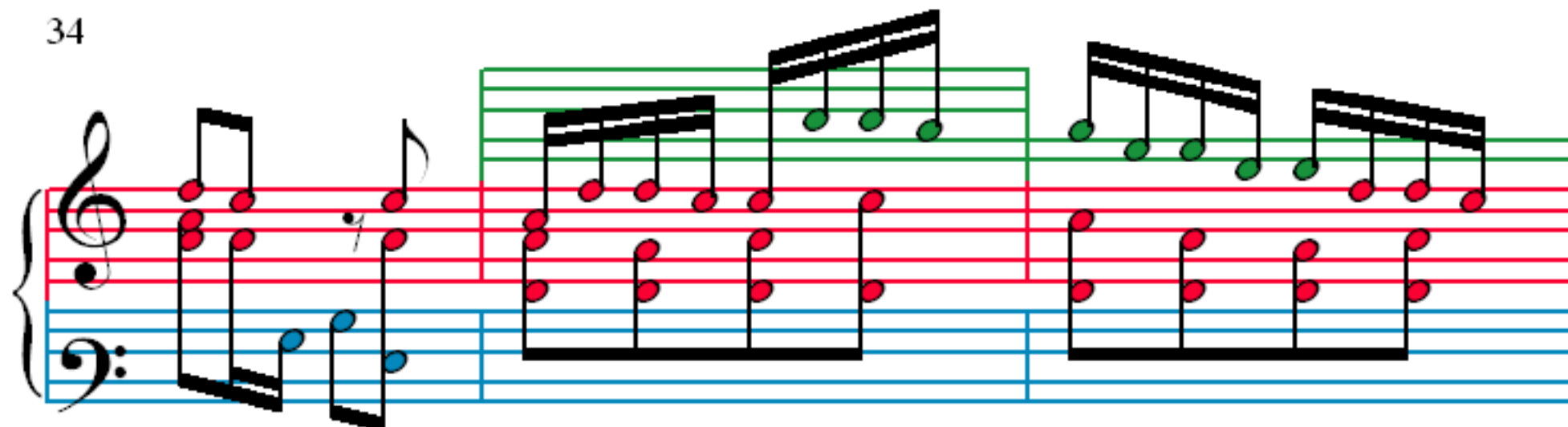
28



31



34



37

40

43

46

49

52

55

58

61

64

67

70

73

Measures 73-75. Treble clef: Measure 73 has two groups of four eighth notes (green and red). Measure 74 has a quarter rest, a quarter note (green), and a quarter note (red). Measure 75 has two groups of four eighth notes (green and red). Bass clef: Measure 73 has two quarter notes (blue). Measure 74 has two quarter notes (blue). Measure 75 has two quarter notes (blue). An orange note is on a lower staff in measure 74.

76

Measures 76-78. Treble clef: Measure 76 has two groups of four eighth notes (green and red). Measure 77 has two groups of four eighth notes (green and red). Measure 78 has two groups of four eighth notes (green and red). Bass clef: Measure 76 has two quarter notes (blue). Measure 77 has two quarter notes (blue). Measure 78 has two quarter notes (blue). Orange notes are on a lower staff in measures 76 and 78.

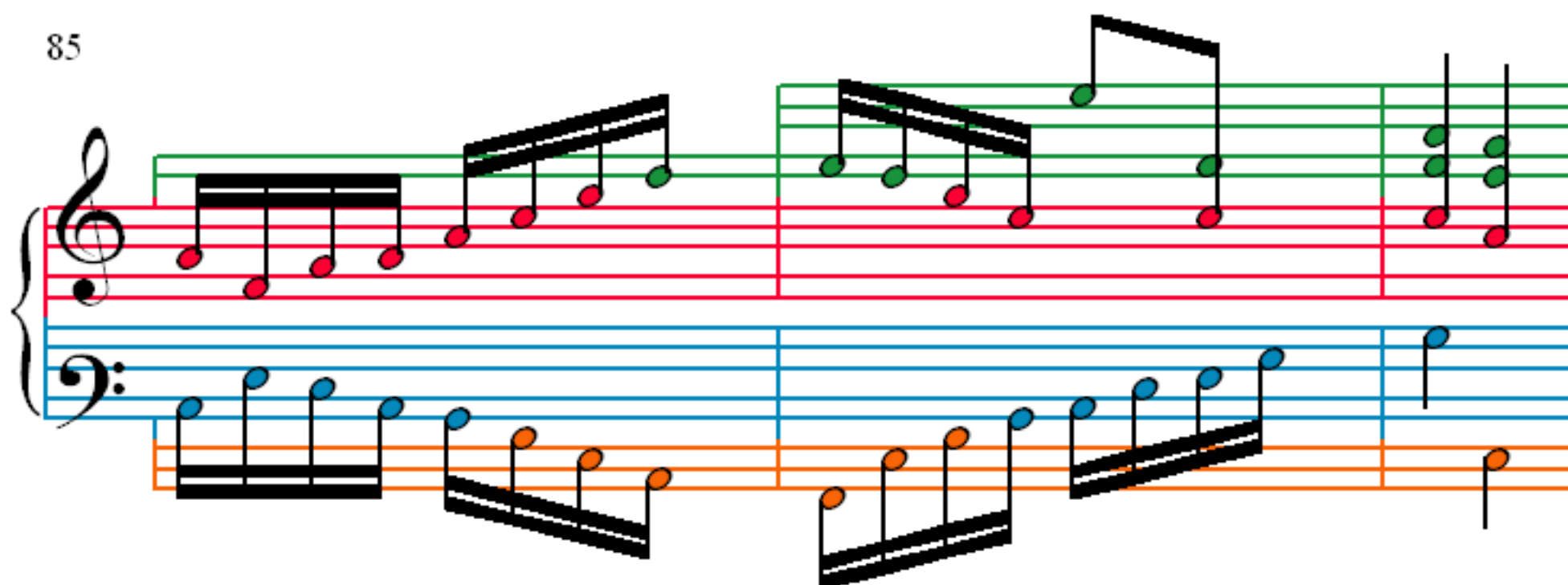
79

Measures 79-81. Treble clef: Measure 79 has two groups of four eighth notes (green and red). Measure 80 has two groups of four eighth notes (green and red). Measure 81 has two groups of four eighth notes (green and red). Bass clef: Measure 79 has two quarter notes (blue). Measure 80 has two quarter notes (blue). Measure 81 has two quarter notes (blue). Orange notes are on a lower staff in measure 81.

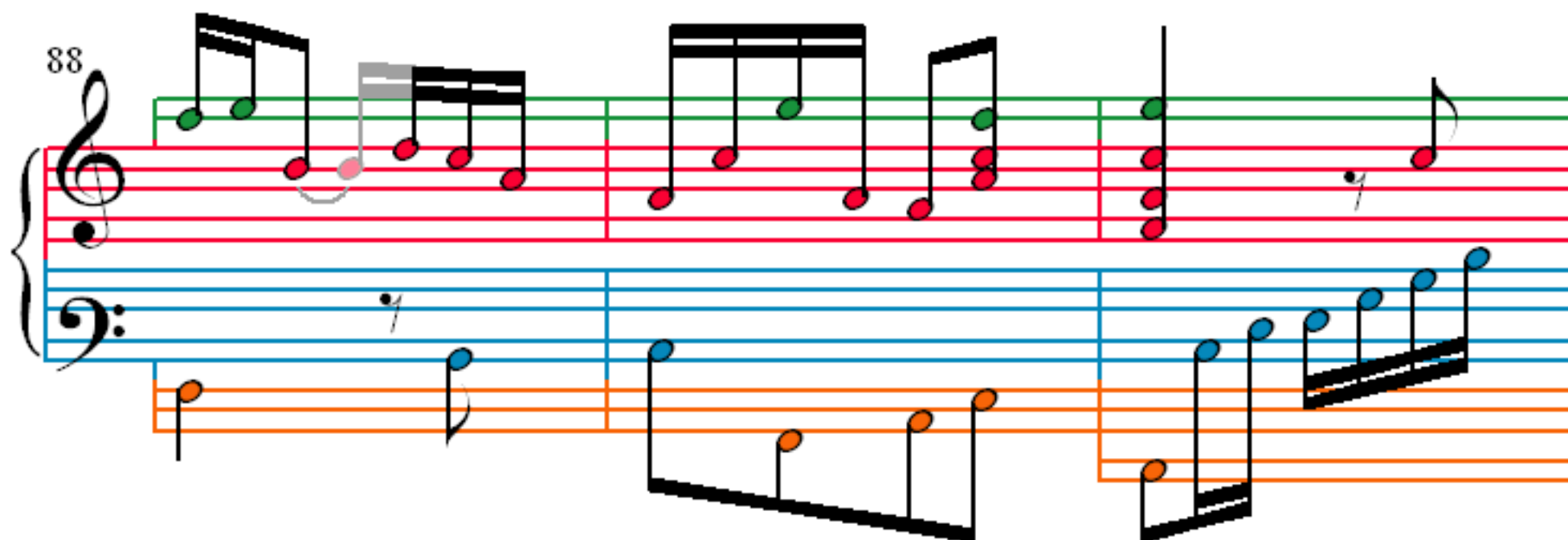
82

Measures 82-84. Treble clef: Measure 82 has two groups of four eighth notes (green and red). Measure 83 has two groups of four eighth notes (green and red). Measure 84 has two groups of four eighth notes (green and red). Bass clef: Measure 82 has two quarter notes (blue). Measure 83 has two quarter notes (blue). Measure 84 has two quarter notes (blue). Orange notes are on a lower staff in measures 82 and 84.

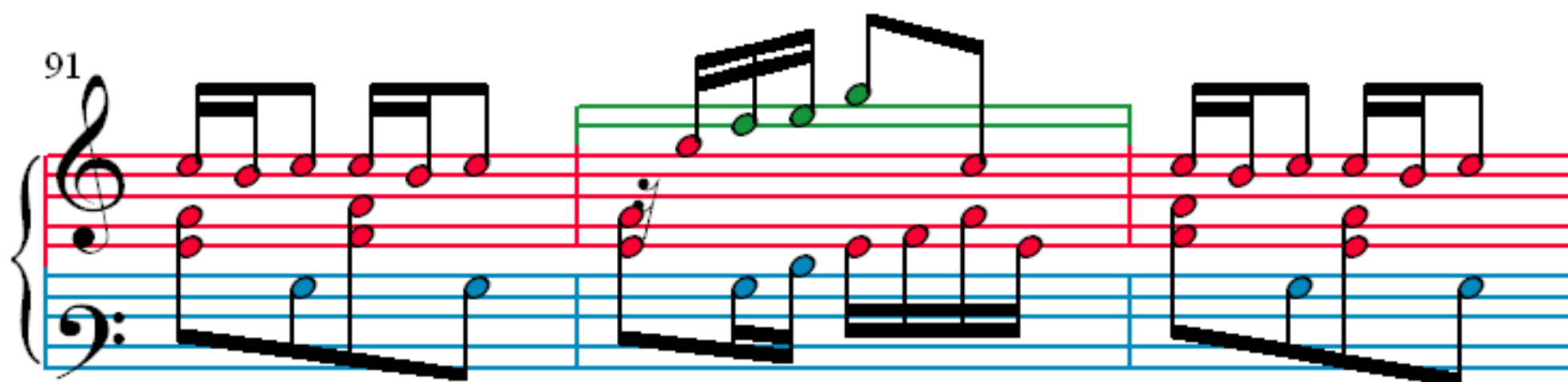
85



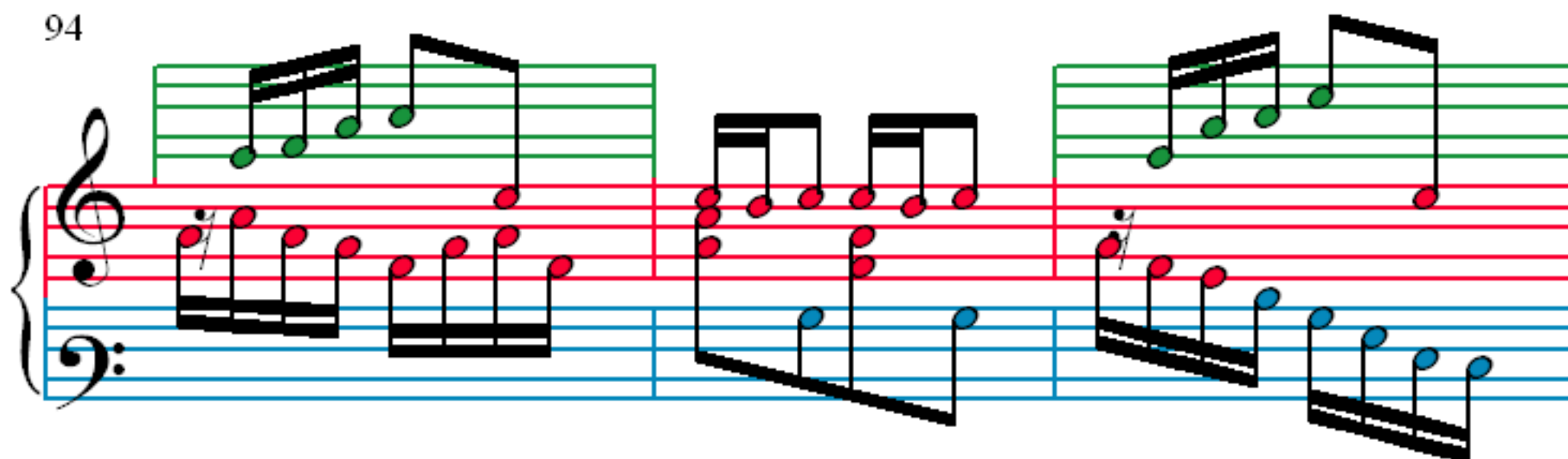
88



91



94



97

Measures 97-99. Treble clef: green and red notes. Bass clef: blue and orange notes. Measure 99 includes an orange staff extension.

100

Measures 100-102. Treble clef: green and red notes. Bass clef: blue and orange notes. Measure 102 includes an orange staff extension.

103

Measures 103-105. Treble clef: green and red notes. Bass clef: blue and orange notes. Measure 105 includes an orange staff extension.

106

Measures 106-108. Treble clef: green and red notes. Bass clef: blue and orange notes. Measure 108 includes an orange staff extension.

109

112

115

118

121

Measures 121-123. Treble clef: red notes. Bass clef: blue notes. An orange staff is positioned below the bass clef staff, containing orange notes.

124

Measures 124-126. Treble clef: red notes. Bass clef: blue notes. An orange staff is positioned below the bass clef staff, containing orange notes.

127

Measures 127-129. Treble clef: red notes. Bass clef: blue notes. An orange staff is positioned below the bass clef staff, containing orange notes. Measure 129 features green notes in the treble clef.

130

Measures 130-132. Treble clef: green notes. Bass clef: red notes. An orange staff is positioned below the bass clef staff, containing orange notes.

133

136

139

142

145

148

151

154

157

Measures 157-159. Treble clef: green notes. Bass clef: blue notes. Measure 157 has a purple note in the treble. Measure 159 has an orange note in the bass.

160

Measures 160-162. Treble clef: green notes. Bass clef: blue notes. Measure 162 has an orange note in the bass.

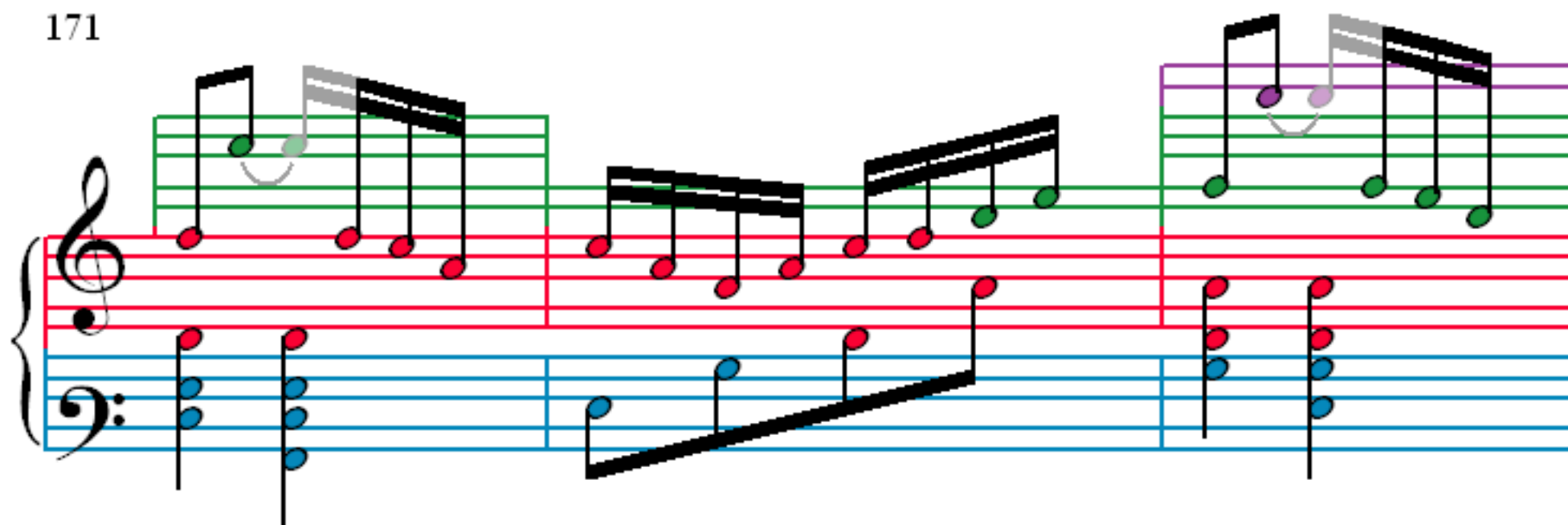
163

Measures 163-166. Treble clef: green notes. Bass clef: blue notes. Measure 166 has an orange note in the bass.

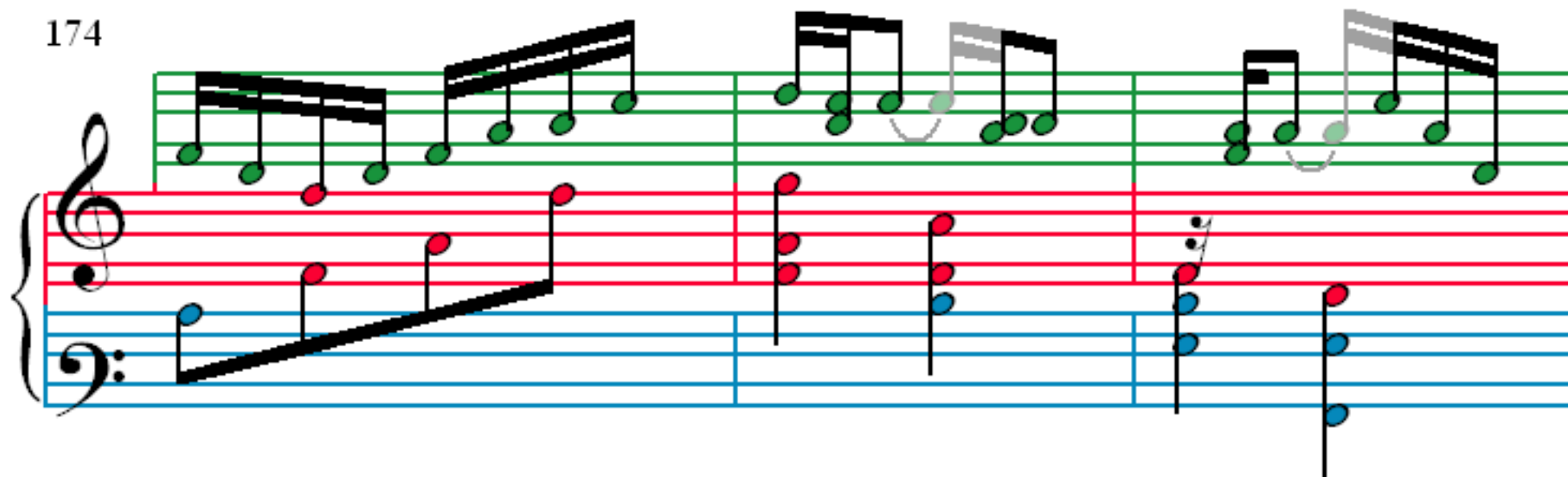
167

Measures 167-170. Treble clef: green notes. Bass clef: blue notes. Measure 167 has a purple note in the treble. Measure 170 has a grey note in the treble.

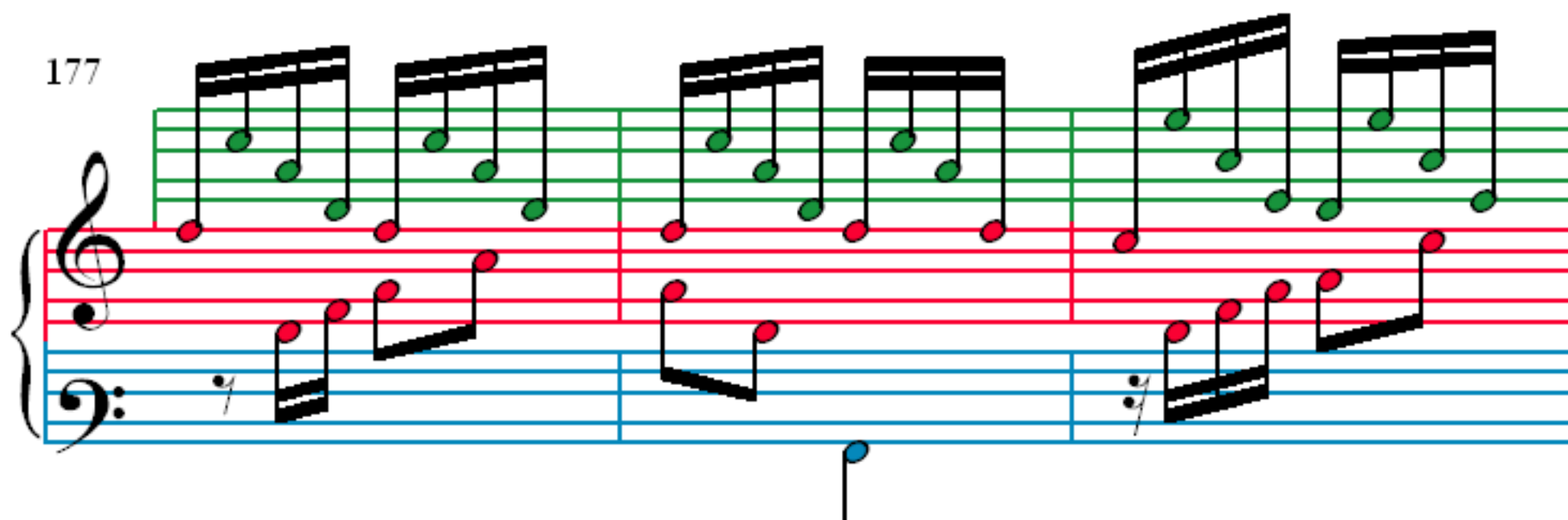
171



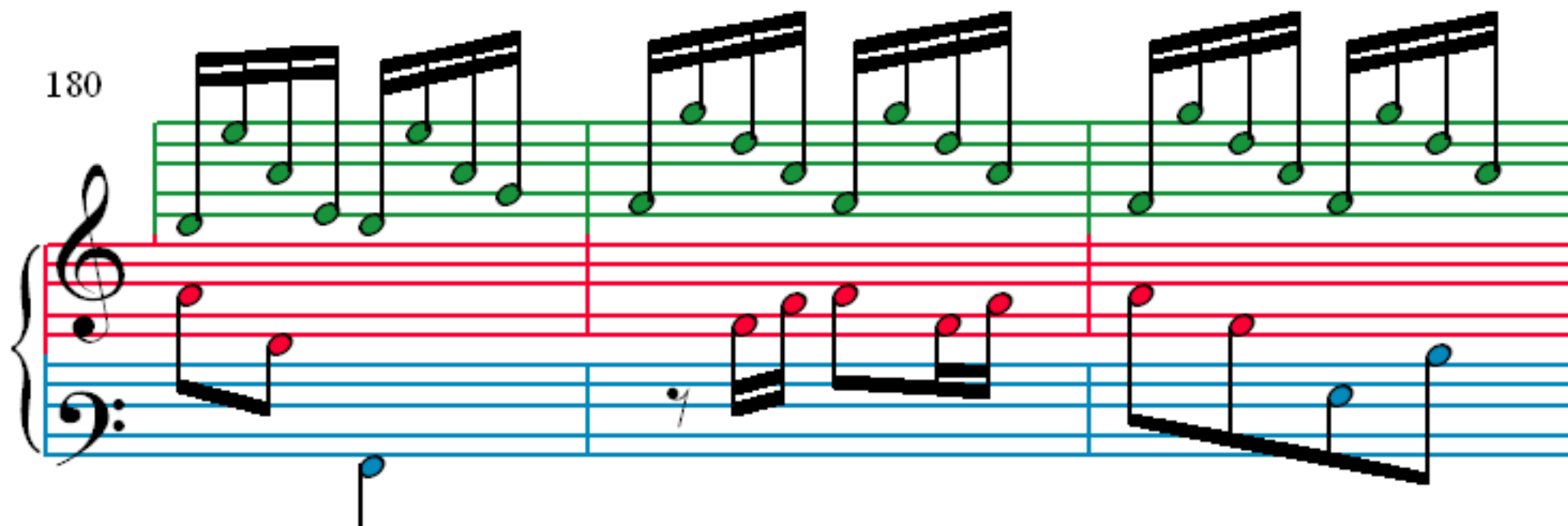
174



177



180



183

185

187

190