

# Minuet in B-flat major

BWV Anh. 118

J. S. Bach (1685–1750)

1

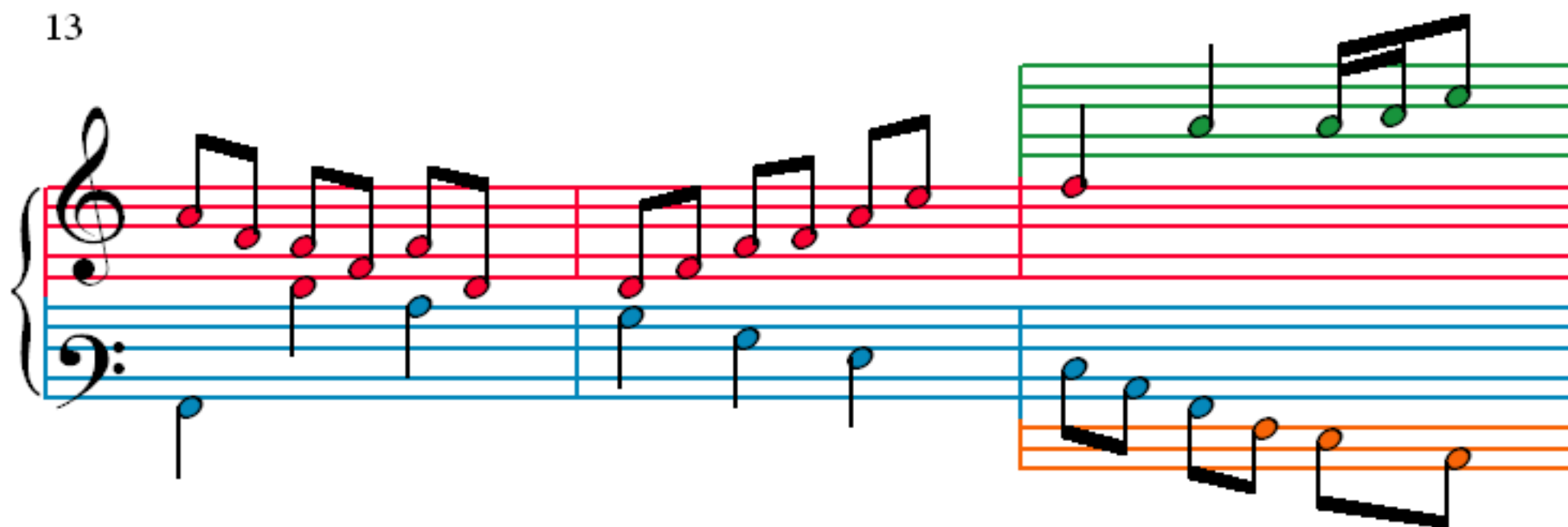
4

7

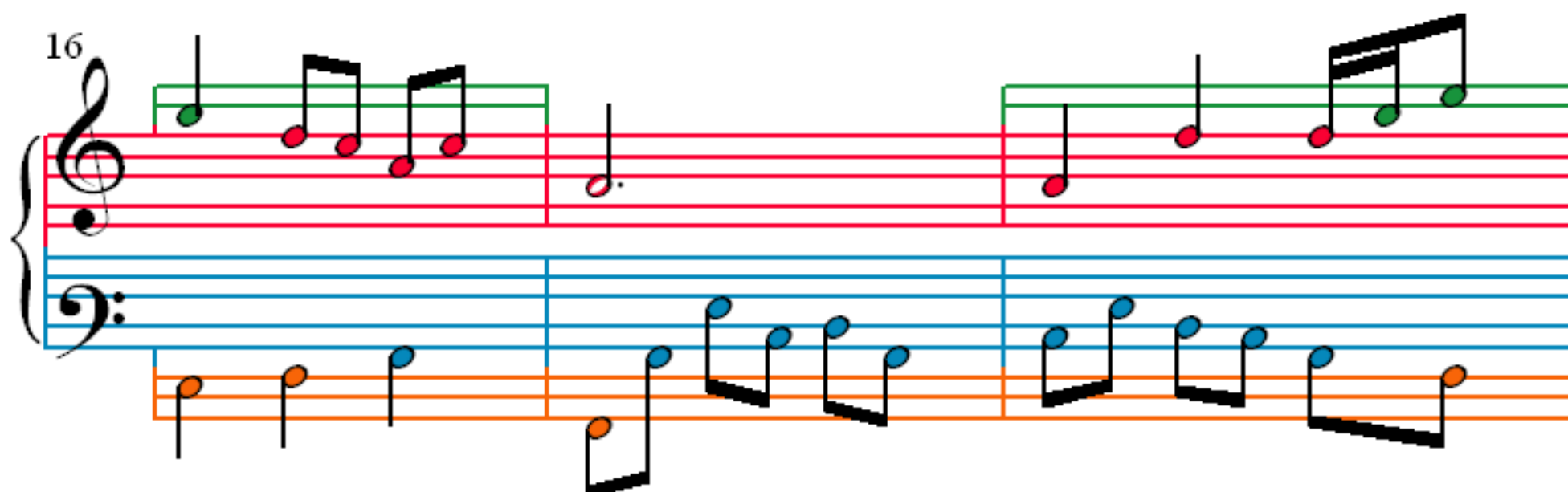
10

Detailed description: This image shows the first 12 measures of the Minuet in B-flat major, BWV Anh. 118, by J.S. Bach. The score is written for piano in 3/4 time. It features a treble and bass staff joined by a brace. The key signature is B-flat major (two flats). The notation includes various note values (quarter, eighth, sixteenth notes) and rests. The first system (measures 1-3) shows the beginning of the piece. The second system (measures 4-6) continues the melody. The third system (measures 7-9) shows a change in the bass line. The fourth system (measures 10-12) concludes the first section. The notes are color-coded: red for the treble staff, blue for the bass staff, and orange for the bass line. The measures are numbered 1, 4, 7, and 10 at the beginning of their respective systems.

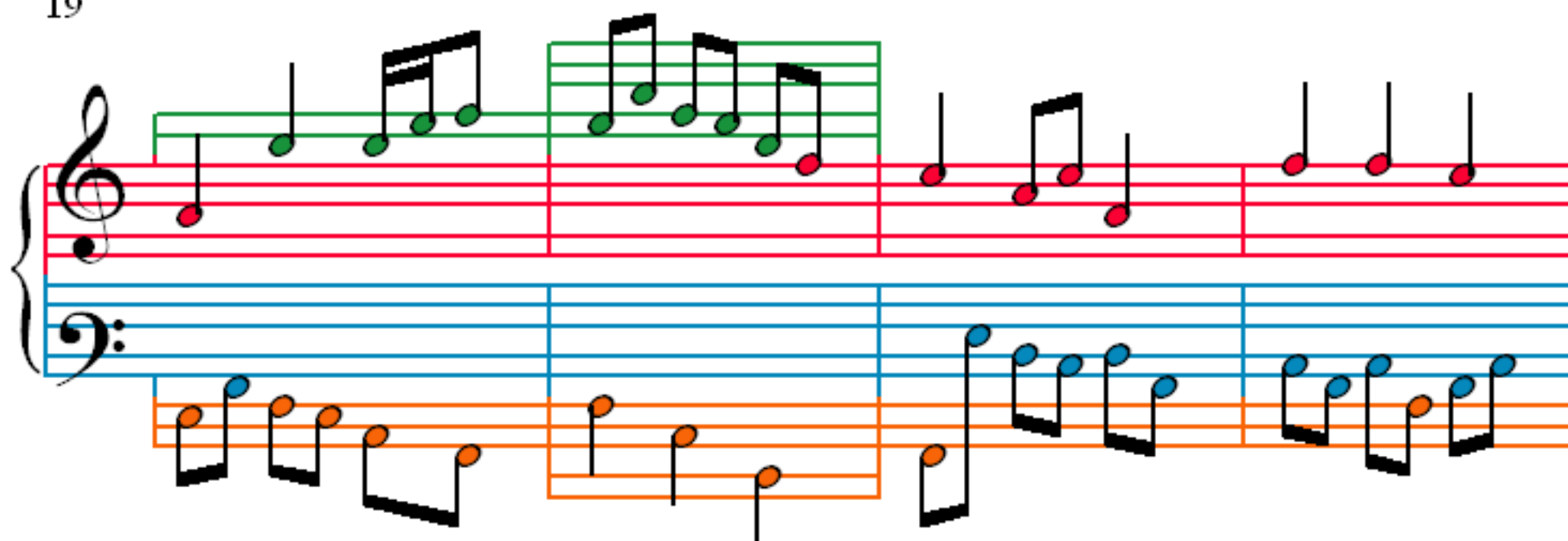
13



16



19



23

