

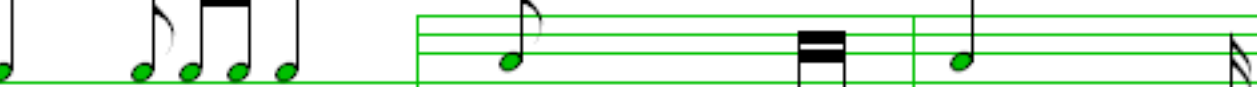
Set Fire to the Rain

Adele

$$1 = 108$$

4

4




7

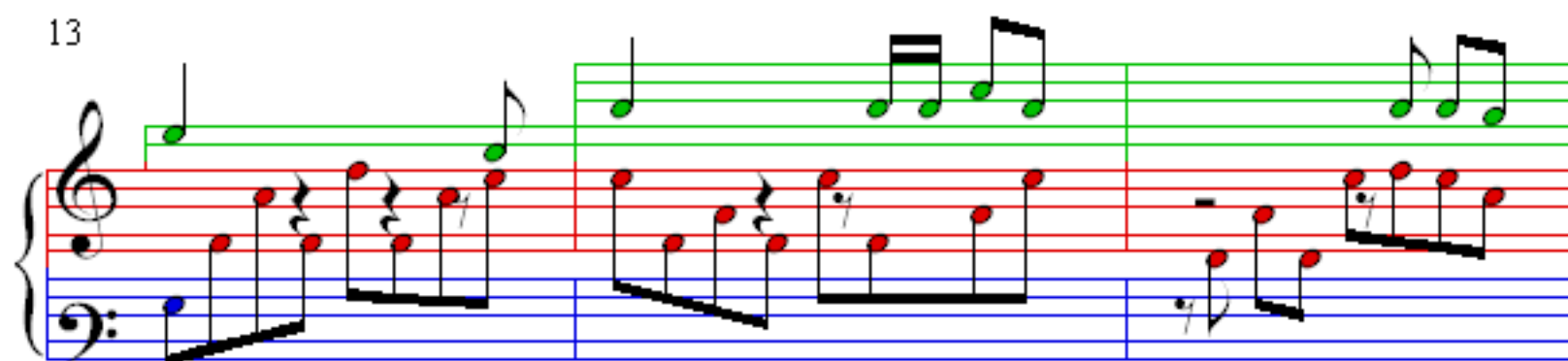
A musical score for the song 'The Rose Tree'. The score is written for three parts: a vocal line (treble clef) and two piano accompaniment lines (treble and bass clefs). The vocal line is written on a green staff, the piano treble part on a red staff, and the piano bass part on a blue staff. The music is in 3/4 time and consists of three measures. The first measure shows the vocal line starting with a quarter note, followed by two eighth notes, and then a quarter note. The piano accompaniment features a steady eighth-note pattern in the bass and a series of beamed eighth notes in the treble. The second and third measures continue this pattern with variations in the vocal melody and piano accompaniment. The score is labeled with a '7' in the top left corner.

10

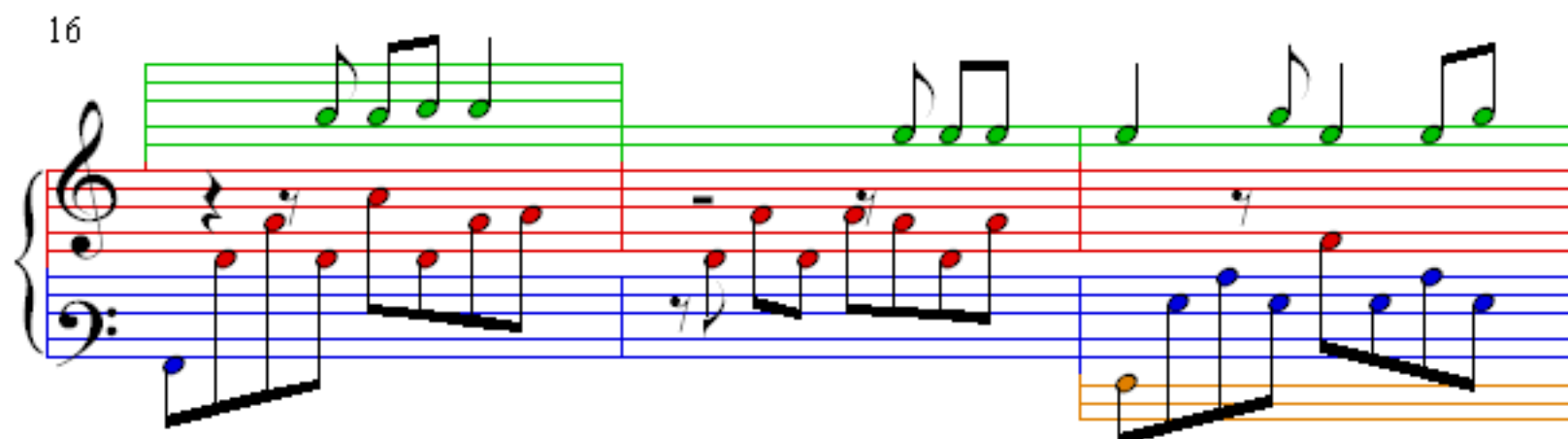
10



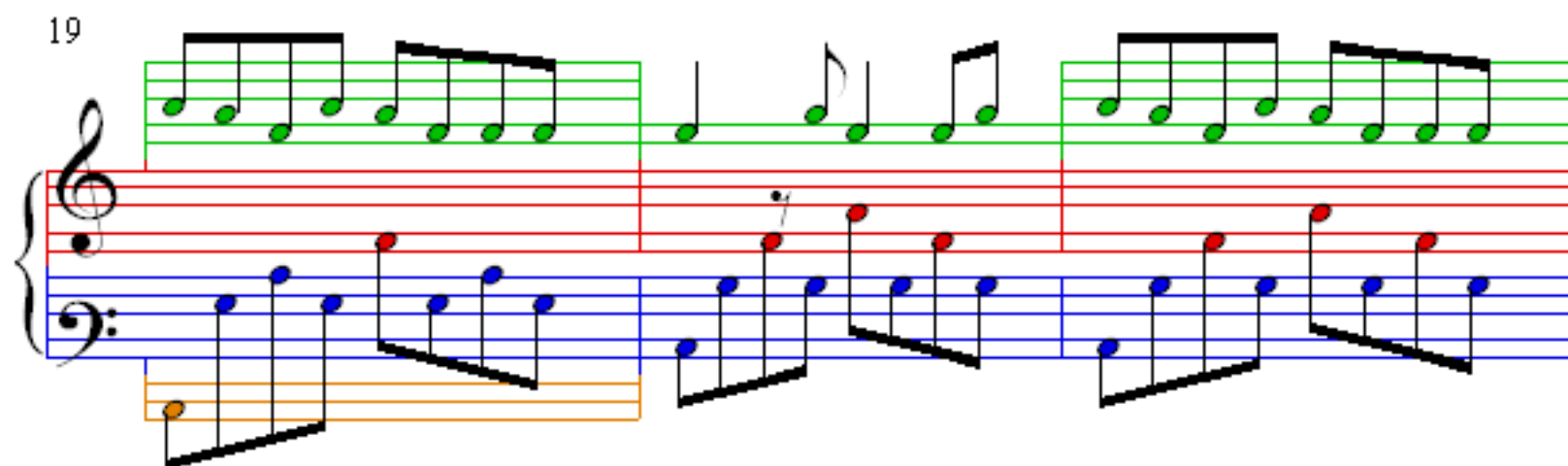
13



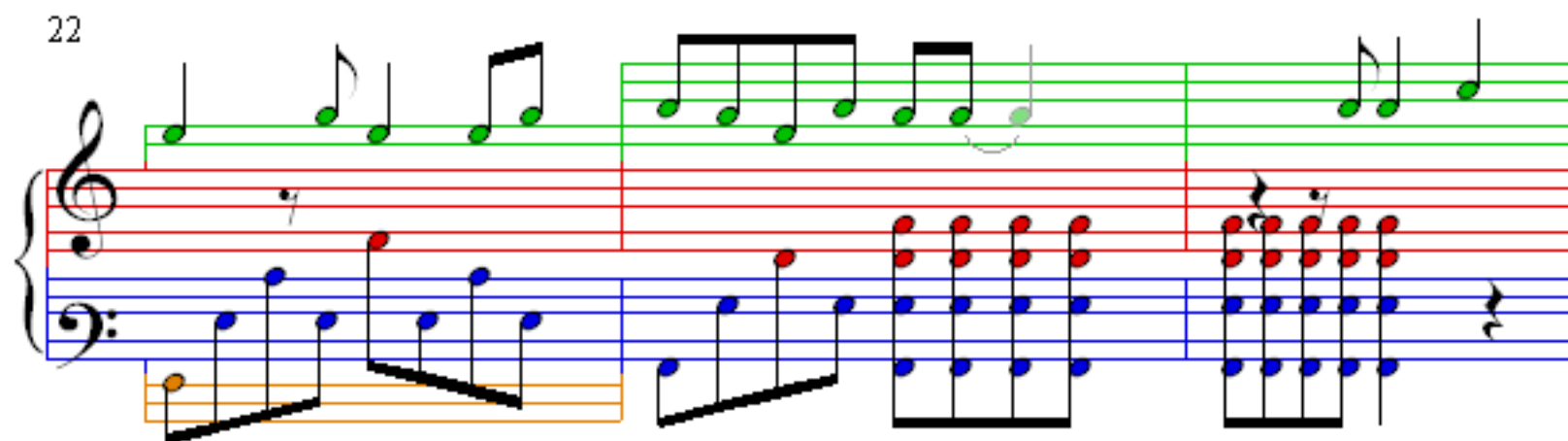
16



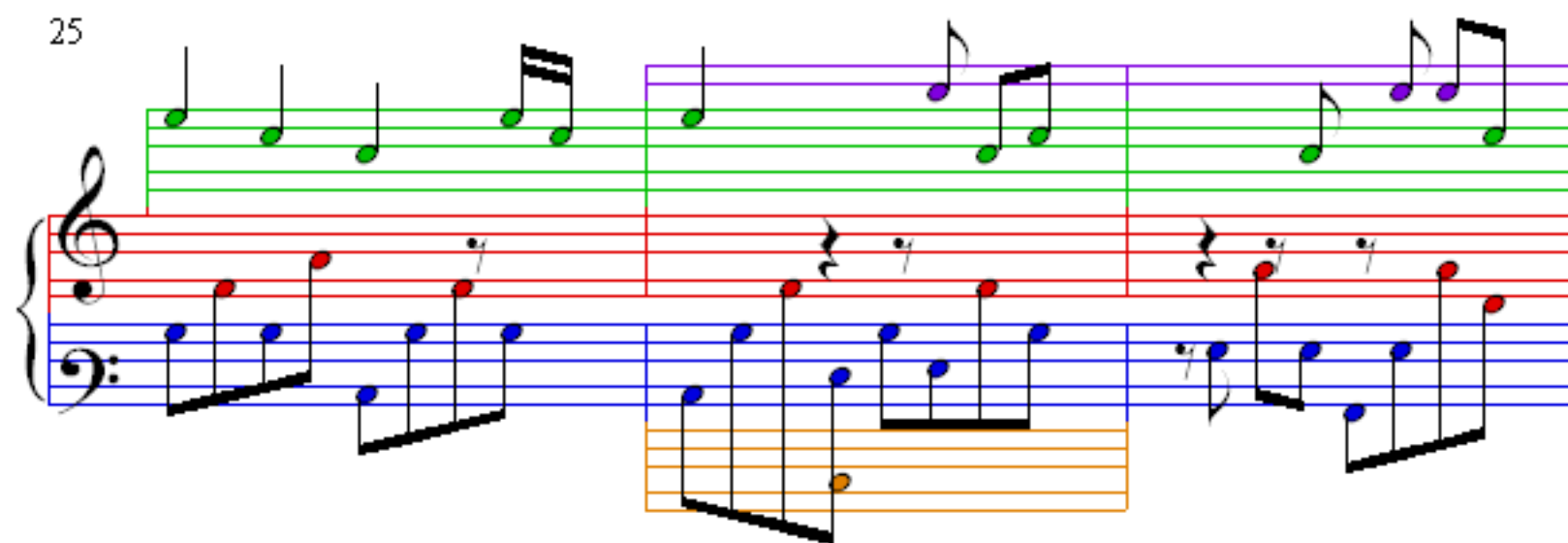
19



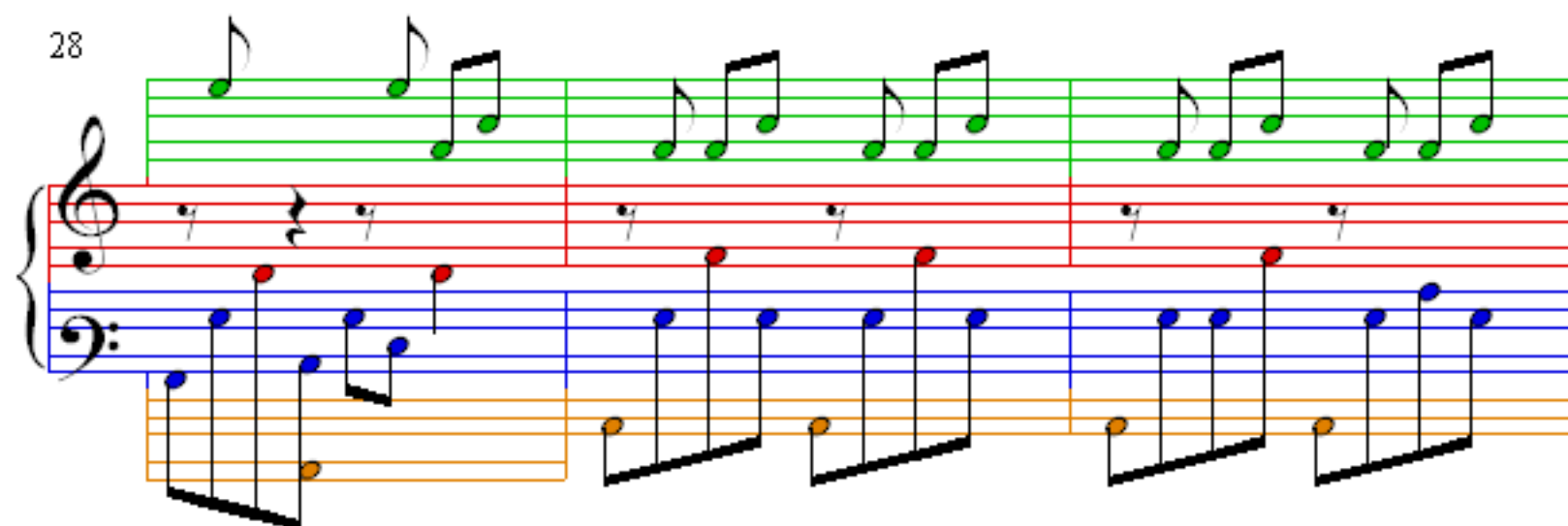
22



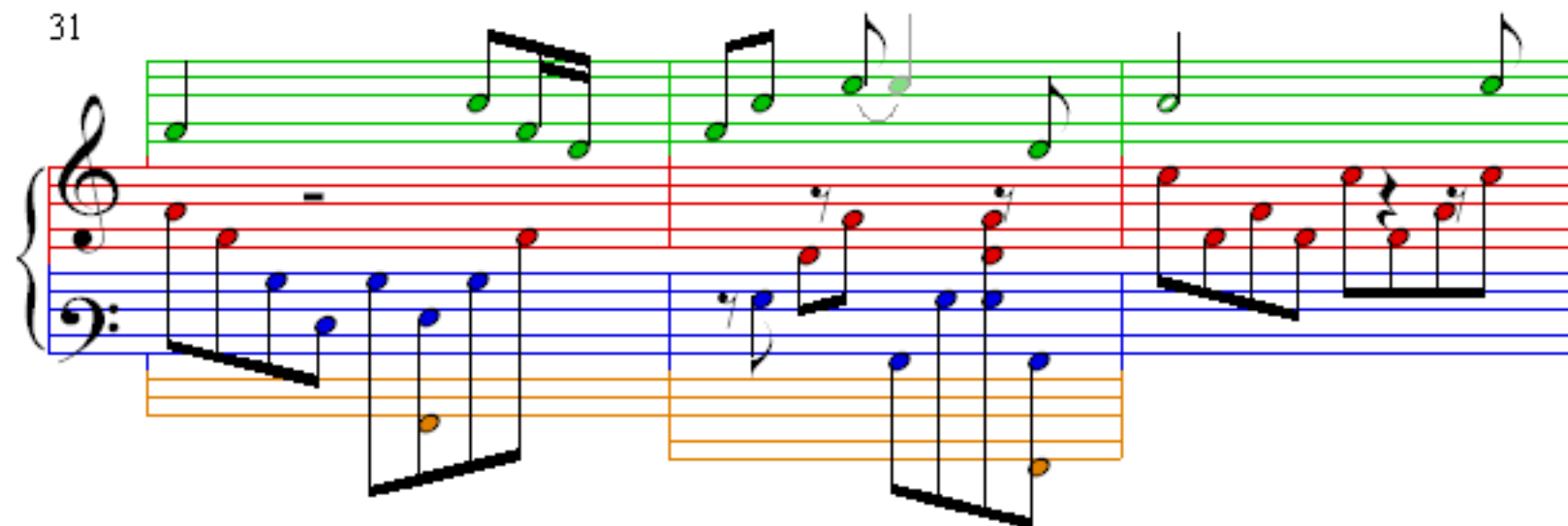
25



28



31



34

Measures 34-36. Treble clef has green notes. Bass clef has red notes. Measure 35 has a blue note in the bass. Measure 36 has a blue note in the bass.

37

Measures 37-39. Treble clef has green notes. Bass clef has red notes. Measure 38 has a blue note in the bass. Measure 39 has a blue note in the bass.

40

Measures 40-42. Treble clef has green notes. Bass clef has red notes. Measure 41 has a blue note in the bass. Measure 42 has a blue note in the bass.

43

Measures 43-45. Treble clef has green notes. Bass clef has red notes. Measure 44 has a blue note in the bass. Measure 45 has a blue note in the bass.

46

46

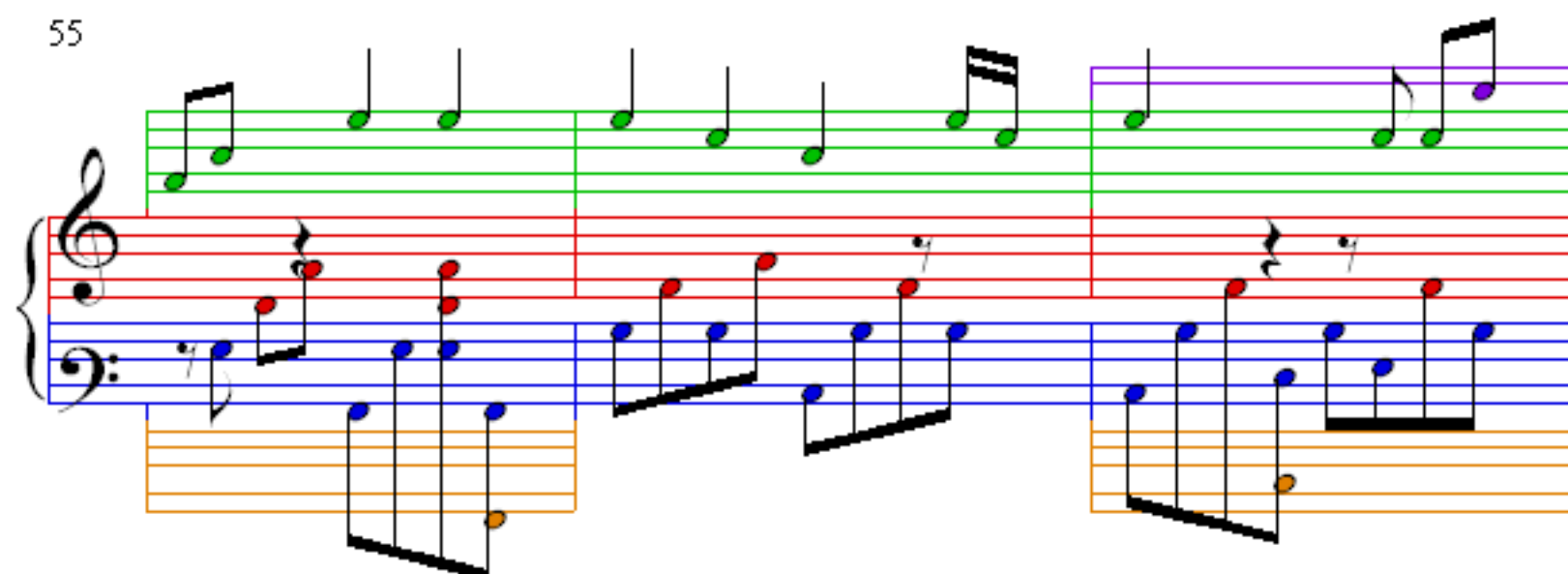
49

49

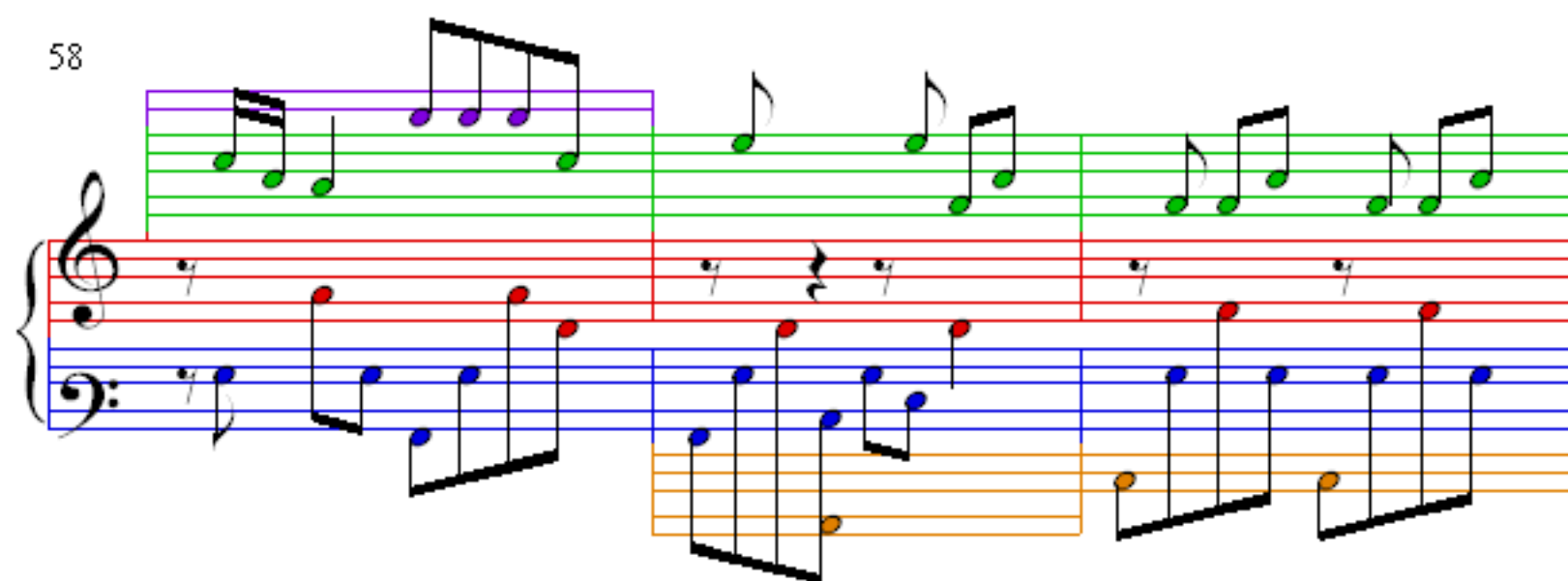
52

52

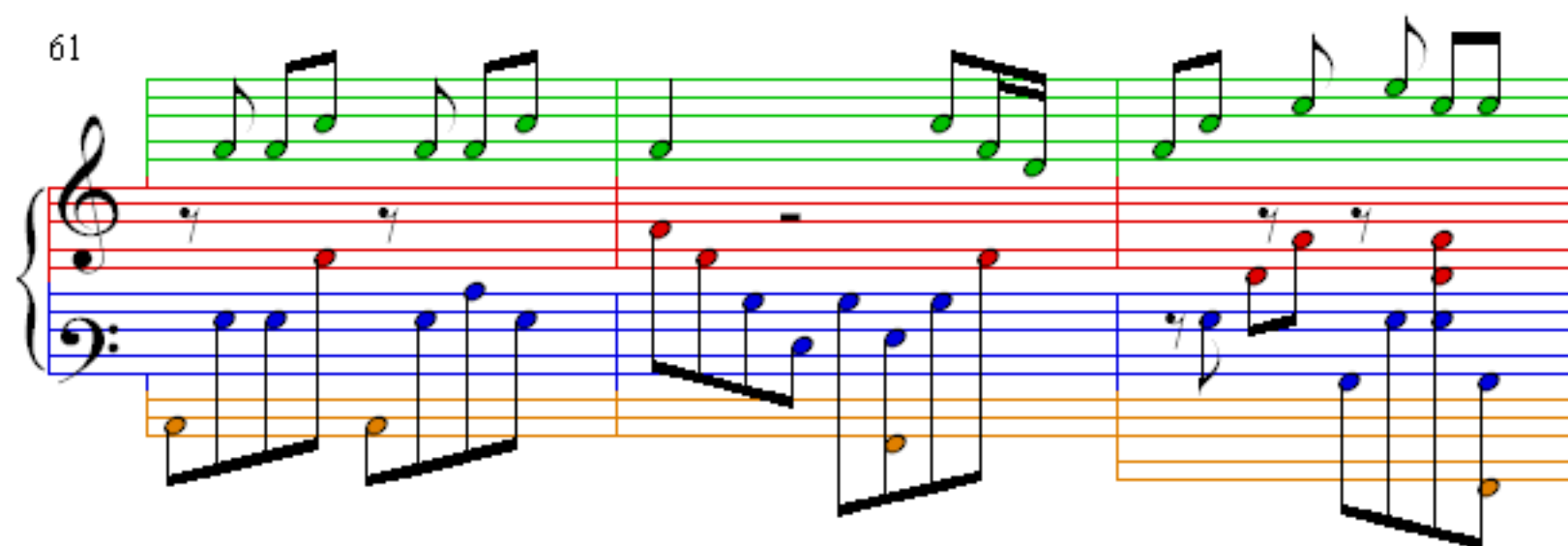
55



58



61



64

Measures 64-66 of the piece. The treble clef staff features a melody of eighth and quarter notes, with a half note rest in measure 65. The bass clef staff provides a harmonic accompaniment with eighth and quarter notes. The notes are color-coded: green for the treble staff and blue for the bass staff. The background is divided into three vertical sections by red lines.

67

Measures 67-69 of the piece. The treble clef staff continues the melody with eighth and quarter notes. The bass clef staff provides a harmonic accompaniment with eighth and quarter notes. The notes are color-coded: green for the treble staff and blue for the bass staff. The background is divided into three vertical sections by red lines.

70

Measures 70-72 of the piece. The treble clef staff features a melody of eighth and quarter notes. The bass clef staff provides a harmonic accompaniment with eighth and quarter notes. The notes are color-coded: green for the treble staff and blue for the bass staff. The background is divided into three vertical sections by red lines.

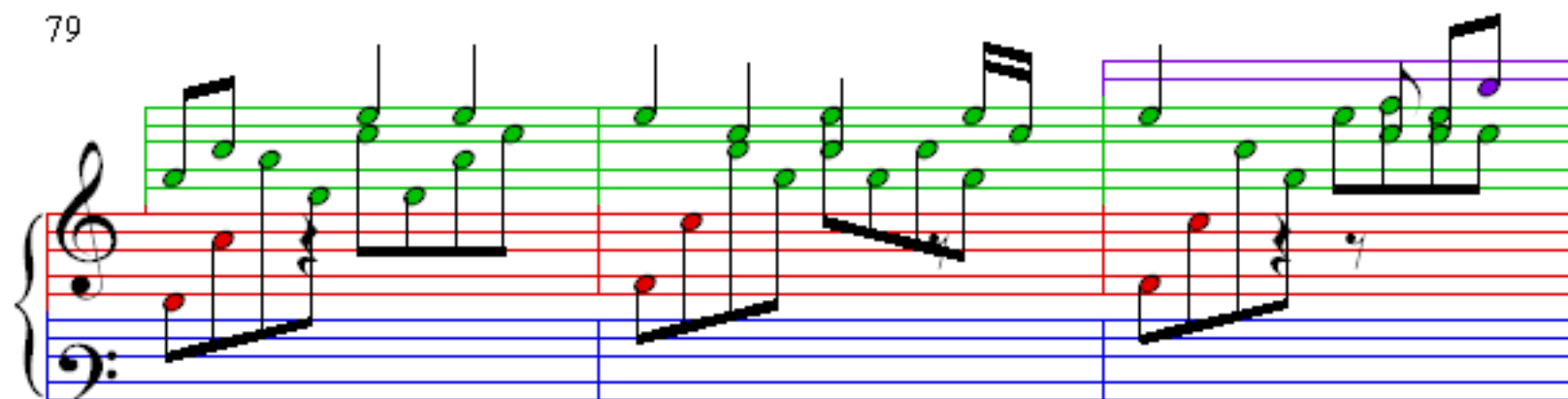
73

Measures 73-75 of the piece. The treble clef staff features a melody of eighth and quarter notes. The bass clef staff provides a harmonic accompaniment with eighth and quarter notes. The notes are color-coded: green for the treble staff and blue for the bass staff. The background is divided into three vertical sections by red lines.

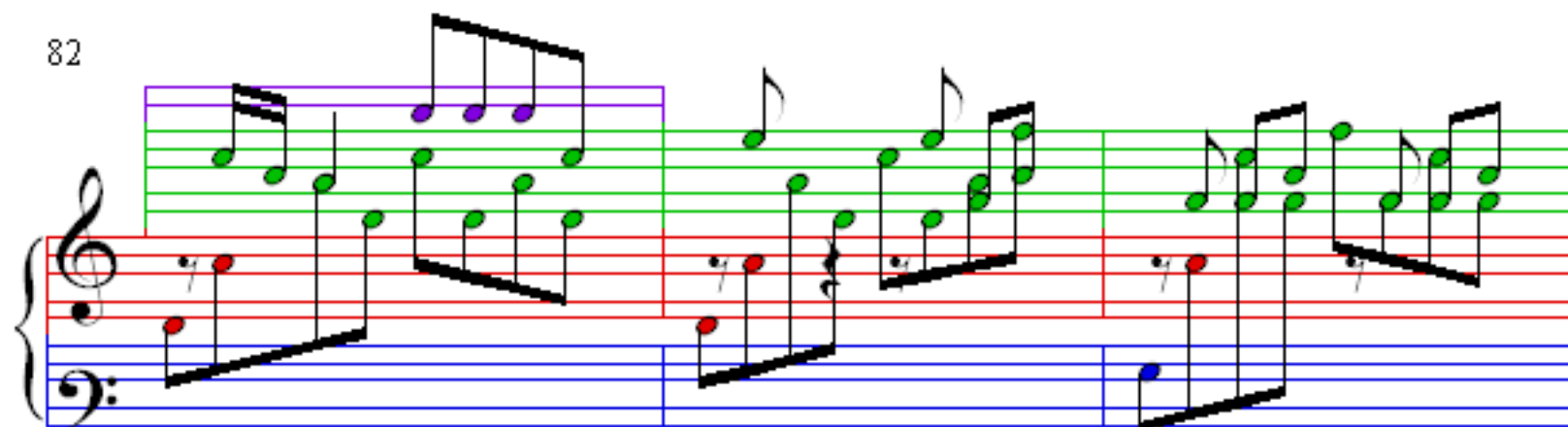
76



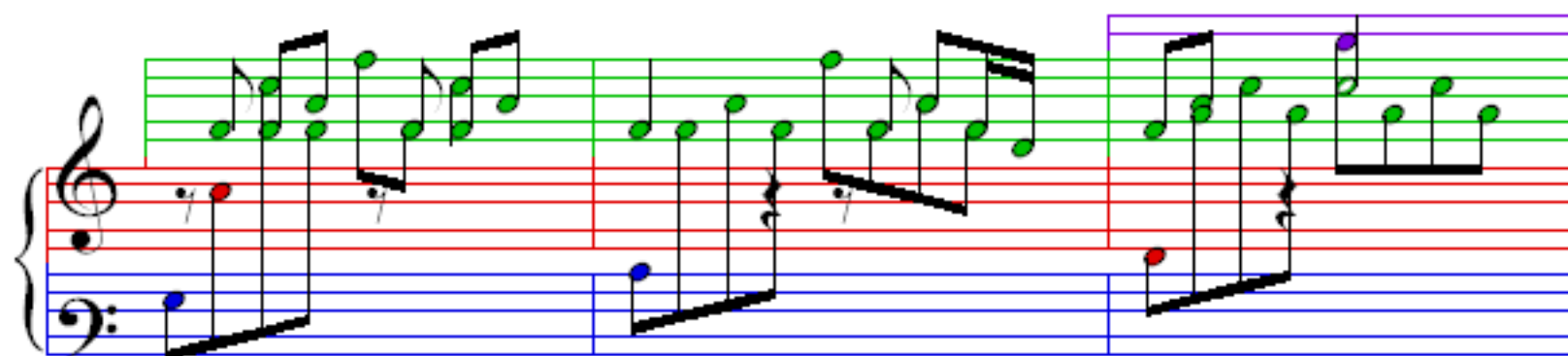
79



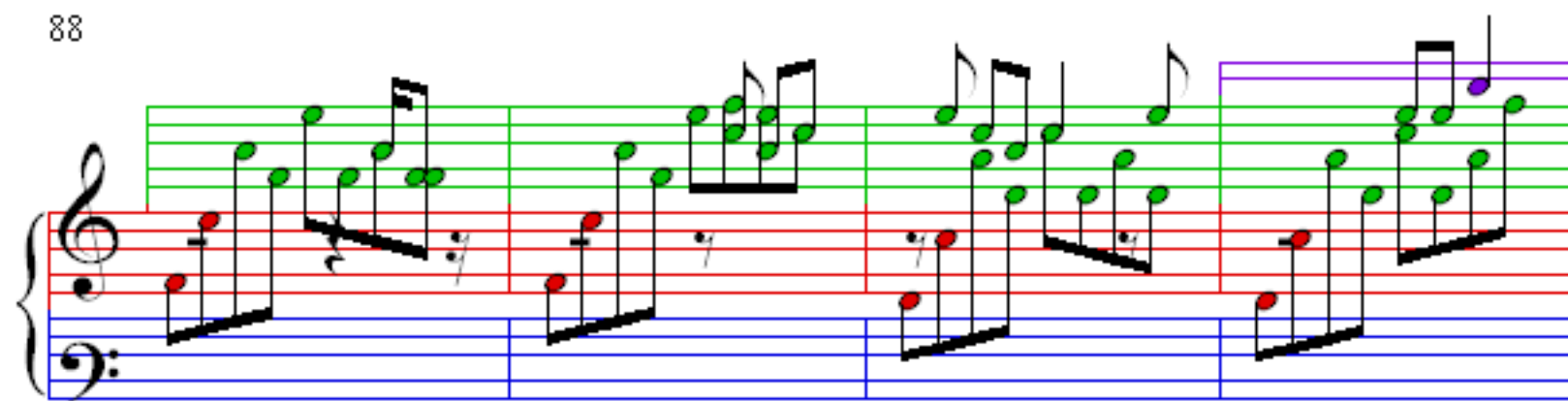
82



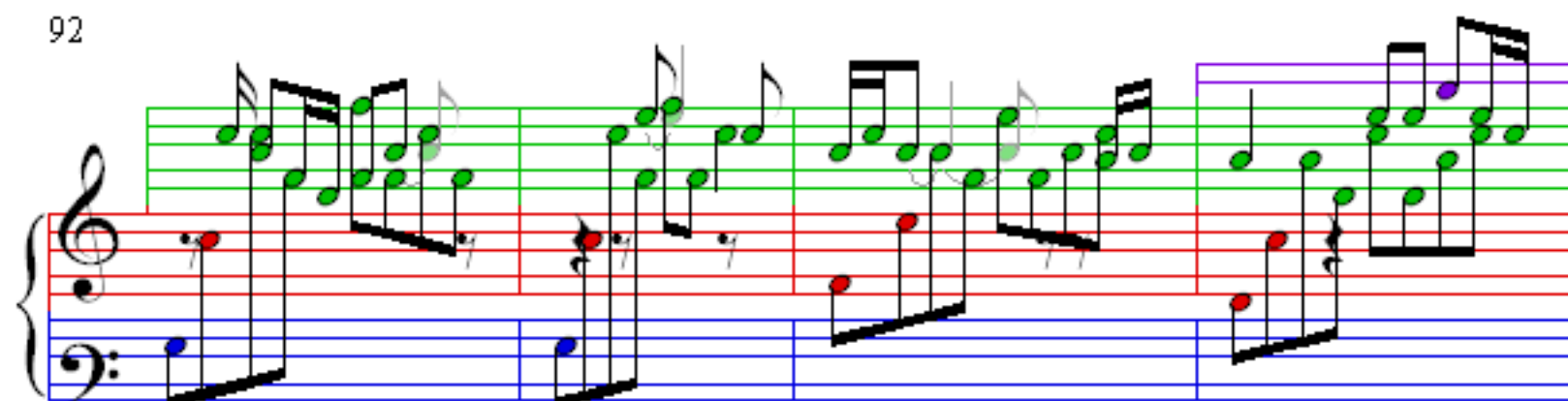
85



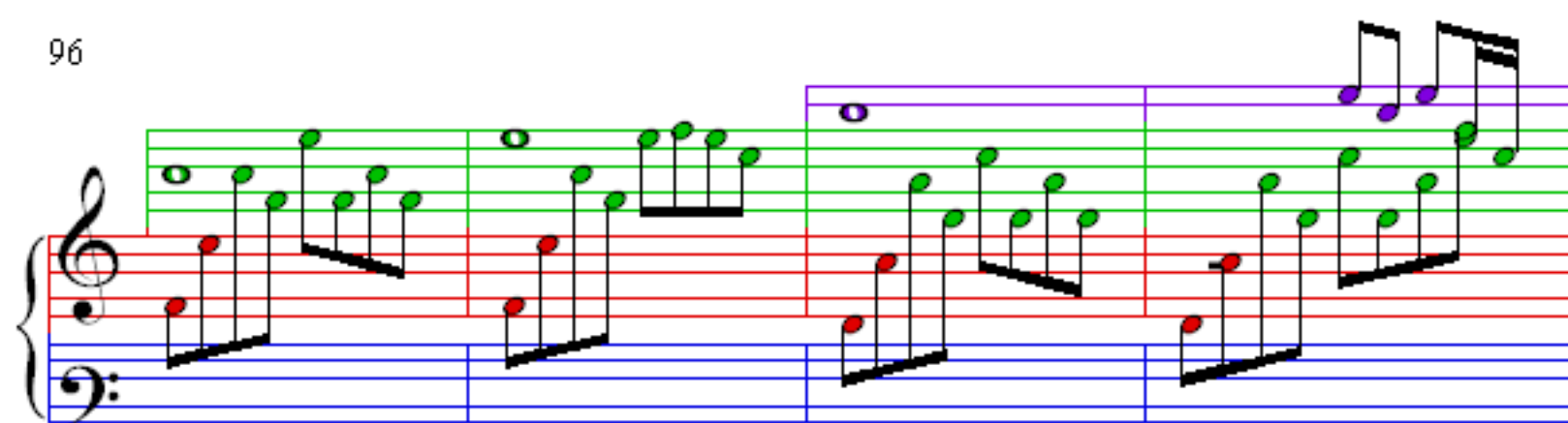
88



92



96



100

