

Prelude Op. WoO 55

L. V. Beethoven (1770–1827)

1

Measures 1-3 of the Prelude Op. WoO 55. The piece is in 3/2 time and D major. The right hand features a continuous eighth-note arpeggiated pattern, while the left hand provides a simple harmonic accompaniment with chords and single notes.

4

Measures 4-6 of the Prelude Op. WoO 55. The right hand continues the arpeggiated pattern, with some notes highlighted in green. The left hand maintains its harmonic support with chords and moving lines.

7

Measures 7-9 of the Prelude Op. WoO 55. The right hand's arpeggiated pattern continues, with some notes highlighted in green. The left hand's accompaniment remains consistent.

10

Measures 10-12 of the Prelude Op. WoO 55. The right hand's arpeggiated pattern continues, with some notes highlighted in green. The left hand's accompaniment remains consistent.

13

16

19

22

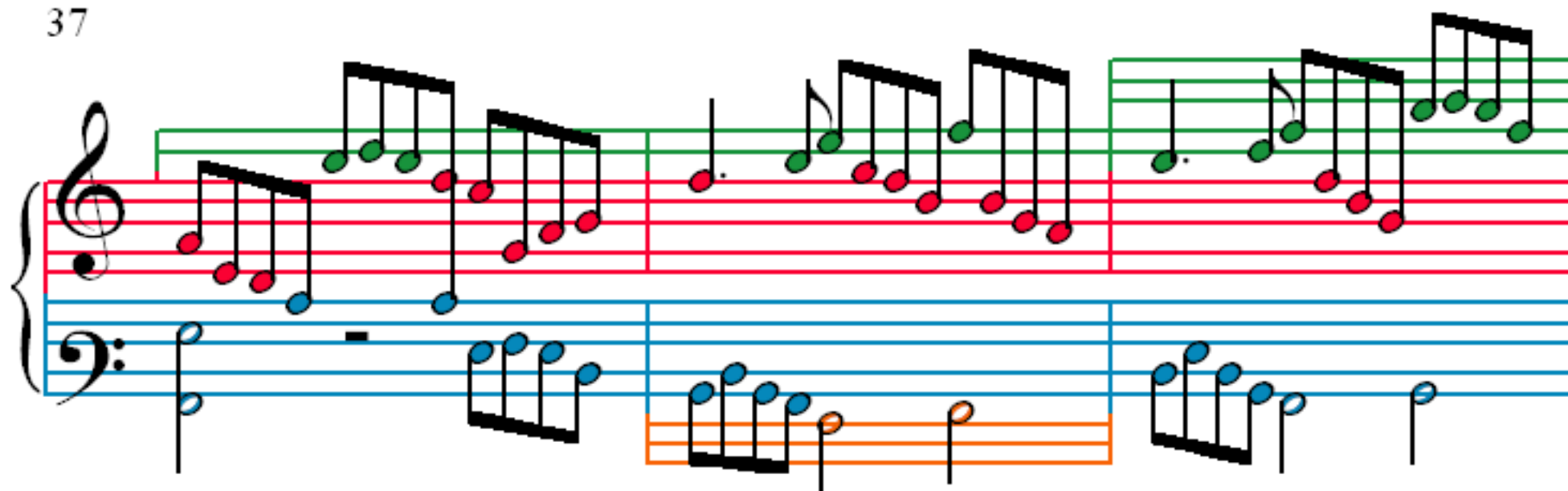
25

28

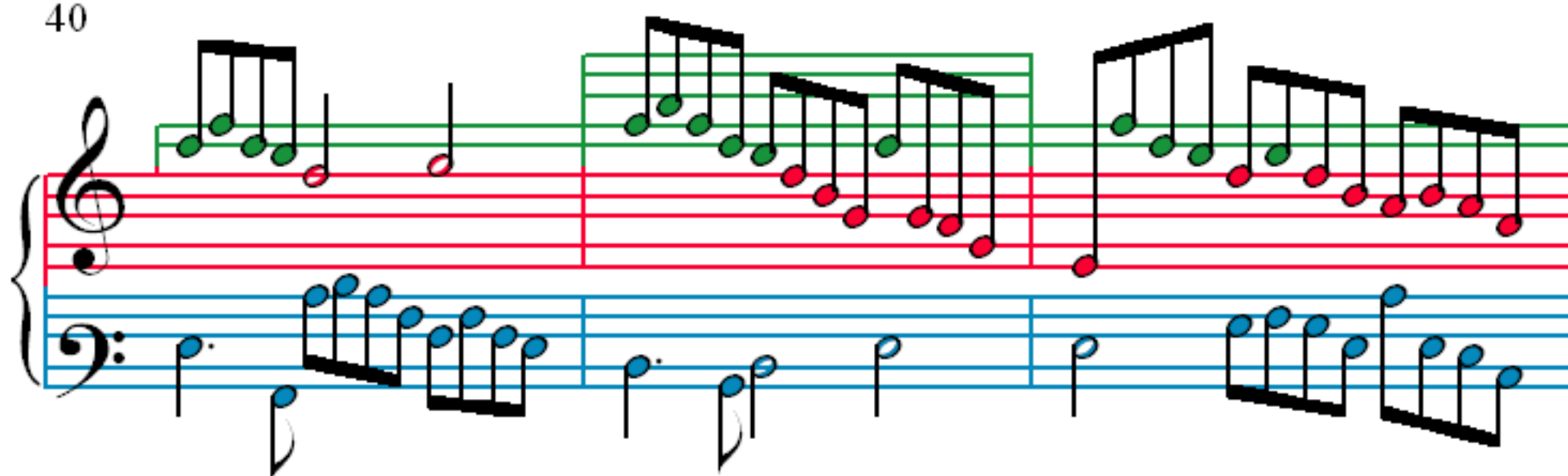
31

34

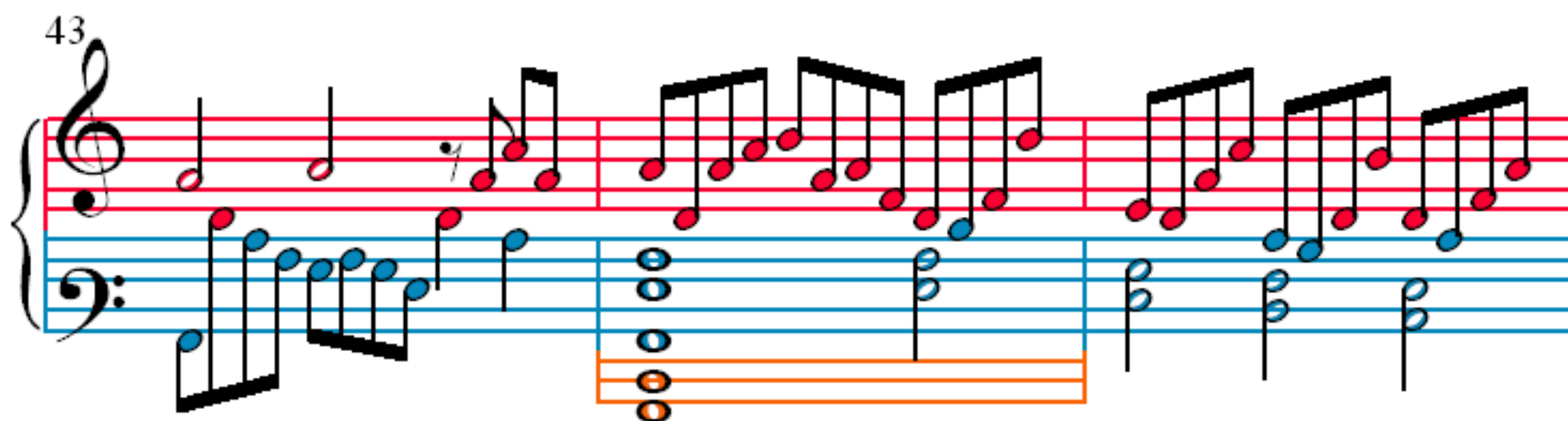
37



40



43



46

