

Etüde f-moll Op. 25 No. 2

F. F. Chopin (1810–1849)

1

3

6

9

12

15

18

21

24

Measures 24-26 of the Etude f-moll Op. 25 No. 2. The notation is for the right hand (treble clef) and left hand (bass clef). The right hand plays a series of eighth notes, with some notes highlighted in green and others in red. The left hand plays a series of eighth notes, with some notes highlighted in red. The measures are grouped into three measures of three measures each.

27

Measures 27-29 of the Etude f-moll Op. 25 No. 2. The notation is for the right hand (treble clef) and left hand (bass clef). The right hand plays a series of eighth notes, with some notes highlighted in green and others in red. The left hand plays a series of eighth notes, with some notes highlighted in red. The measures are grouped into three measures of three measures each.

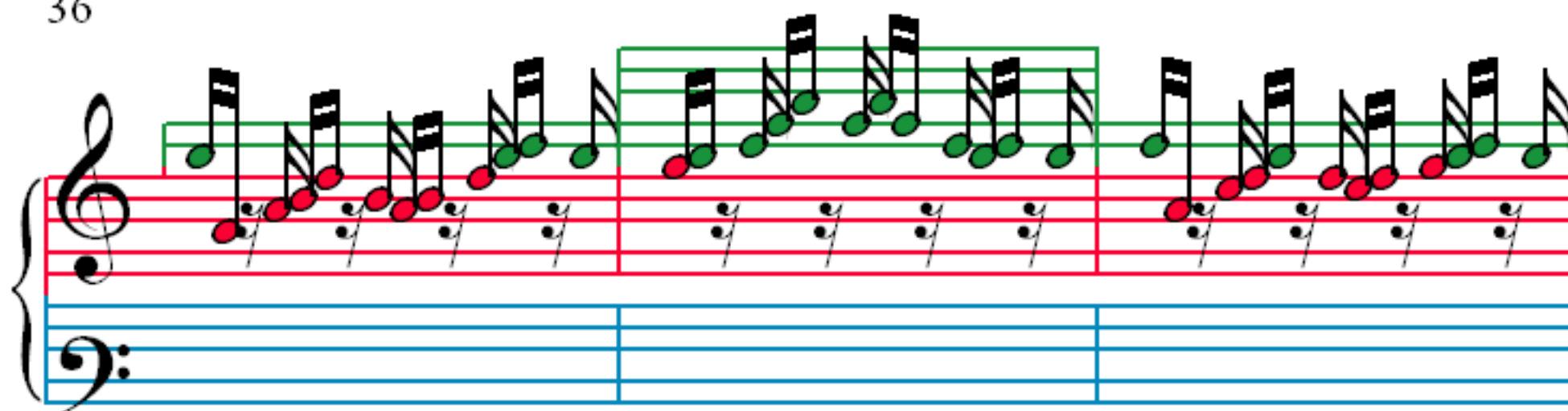
30

Measures 30-32 of the Etude f-moll Op. 25 No. 2. The notation is for the right hand (treble clef) and left hand (bass clef). The right hand plays a series of eighth notes, with some notes highlighted in green and others in red. The left hand plays a series of eighth notes, with some notes highlighted in red. The measures are grouped into three measures of three measures each.

33

Measures 33-35 of the Etude f-moll Op. 25 No. 2. The notation is for the right hand (treble clef) and left hand (bass clef). The right hand plays a series of eighth notes, with some notes highlighted in green and others in red. The left hand plays a series of eighth notes, with some notes highlighted in red. The measures are grouped into three measures of three measures each.

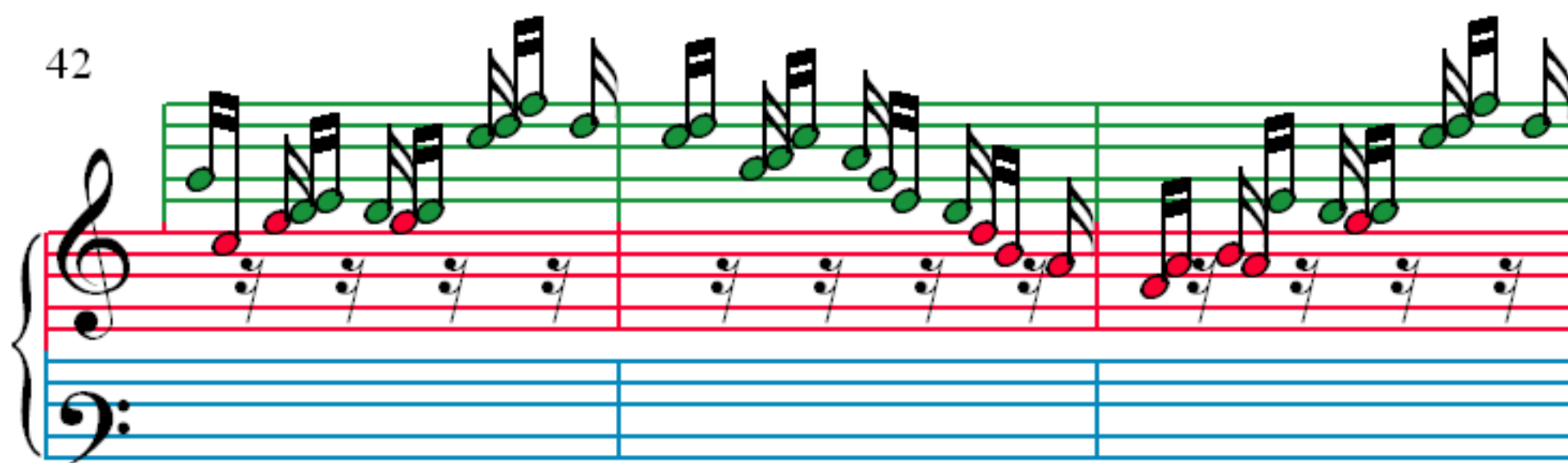
36



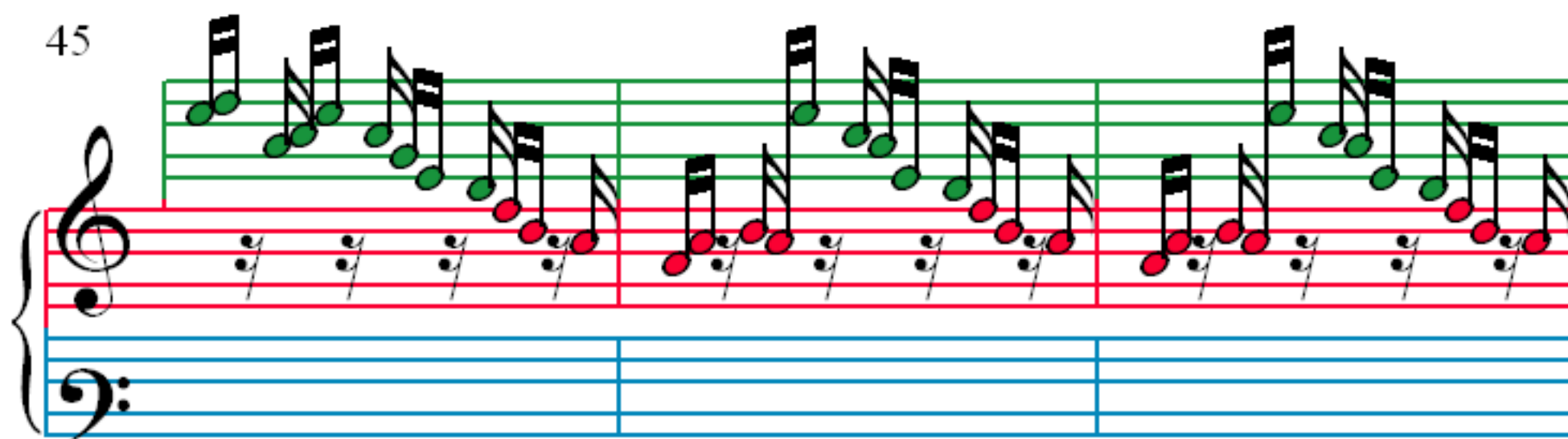
39



42



45



48

51

54

57

60

Measures 60 and 61 of the Etude f-moll Op. 25 No. 2. The notation is for a piano piece in F minor. The right hand (treble clef) plays a series of eighth notes, while the left hand (bass clef) plays a steady eighth-note accompaniment. The notes are color-coded: green for natural notes, red for flats, and purple for naturals. The key signature is one flat (F minor).

62

Measures 62 and 63 of the Etude f-moll Op. 25 No. 2. The notation continues the pattern from the previous measures. The right hand plays eighth notes, and the left hand plays a steady eighth-note accompaniment. The notes are color-coded: green for natural notes, red for flats, and purple for naturals. The key signature is one flat (F minor).

64

Measures 64 and 65 of the Etude f-moll Op. 25 No. 2. The notation continues the pattern from the previous measures. The right hand plays eighth notes, and the left hand plays a steady eighth-note accompaniment. The notes are color-coded: green for natural notes, red for flats, and purple for naturals. The key signature is one flat (F minor).

66

Measures 66 and 67 of the Etude f-moll Op. 25 No. 2. The notation continues the pattern from the previous measures. The right hand plays eighth notes, and the left hand plays a steady eighth-note accompaniment. The notes are color-coded: green for natural notes, red for flats, and purple for naturals. The key signature is one flat (F minor).