

Melodische Übungsstücke (No. 27)

A. Diabelli (1781–1858)

1

Exercise 1, measures 1-2. The notation is in 4/4 time, featuring a treble and bass staff. The treble staff has a key signature of one sharp (F#) and a 4/4 time signature. The bass staff has a key signature of one flat (Bb) and a 4/4 time signature. The melody in the treble staff consists of eighth notes, while the bass staff features a steady eighth-note accompaniment. The notes are color-coded: green for the treble staff, red for the bass staff, and blue for the bass staff. The exercise is divided into two measures, each containing four measures of music.

3

Exercise 3, measures 1-2. The notation is in 4/4 time, featuring a treble and bass staff. The treble staff has a key signature of one sharp (F#) and a 4/4 time signature. The bass staff has a key signature of one flat (Bb) and a 4/4 time signature. The melody in the treble staff consists of eighth notes, while the bass staff features a steady eighth-note accompaniment. The notes are color-coded: green for the treble staff, red for the bass staff, and blue for the bass staff. The exercise is divided into two measures, each containing four measures of music.

5

Exercise 5, measures 1-2. The notation is in 4/4 time, featuring a treble and bass staff. The treble staff has a key signature of one sharp (F#) and a 4/4 time signature. The bass staff has a key signature of one flat (Bb) and a 4/4 time signature. The melody in the treble staff consists of eighth notes, while the bass staff features a steady eighth-note accompaniment. The notes are color-coded: green for the treble staff, red for the bass staff, and blue for the bass staff. The exercise is divided into two measures, each containing four measures of music.

7

Exercise 7, measures 1-2. The notation is on a grand staff with three systems of staves. The top system has a green staff, a red staff, and a blue staff. The middle system has a blue staff and an orange staff. The bottom system has an orange staff and a pink staff. The music consists of eighth and sixteenth notes, with some beamed groups. The first measure of the second system ends with a double bar line.

9

Exercise 9, measures 1-2. The notation is on a grand staff with three systems of staves. The top system has a green staff, a red staff, and a blue staff. The middle system has a blue staff and an orange staff. The bottom system has an orange staff and a pink staff. The music consists of eighth and sixteenth notes, with some beamed groups. The first measure of the second system ends with a double bar line.

11

Exercise 11, measures 1-2. The notation is on a grand staff with three systems of staves. The top system has a green staff, a red staff, and a blue staff. The middle system has a blue staff and an orange staff. The bottom system has an orange staff and a pink staff. The music consists of eighth and sixteenth notes, with some beamed groups. The first measure of the second system ends with a double bar line.

13

Exercise 13, measures 1-4. The notation is on a grand staff with three systems. The top system (measures 1-2) features a treble clef with a green line, a red line, and a blue line. The middle system (measures 3-4) features a bass clef with a blue line, a red line, and a green line. The bottom system (measures 5-6) features a bass clef with a blue line, a red line, and a green line. The notes are colored green, red, and blue. The exercise consists of a sequence of chords and single notes, with a final measure containing a whole note chord.

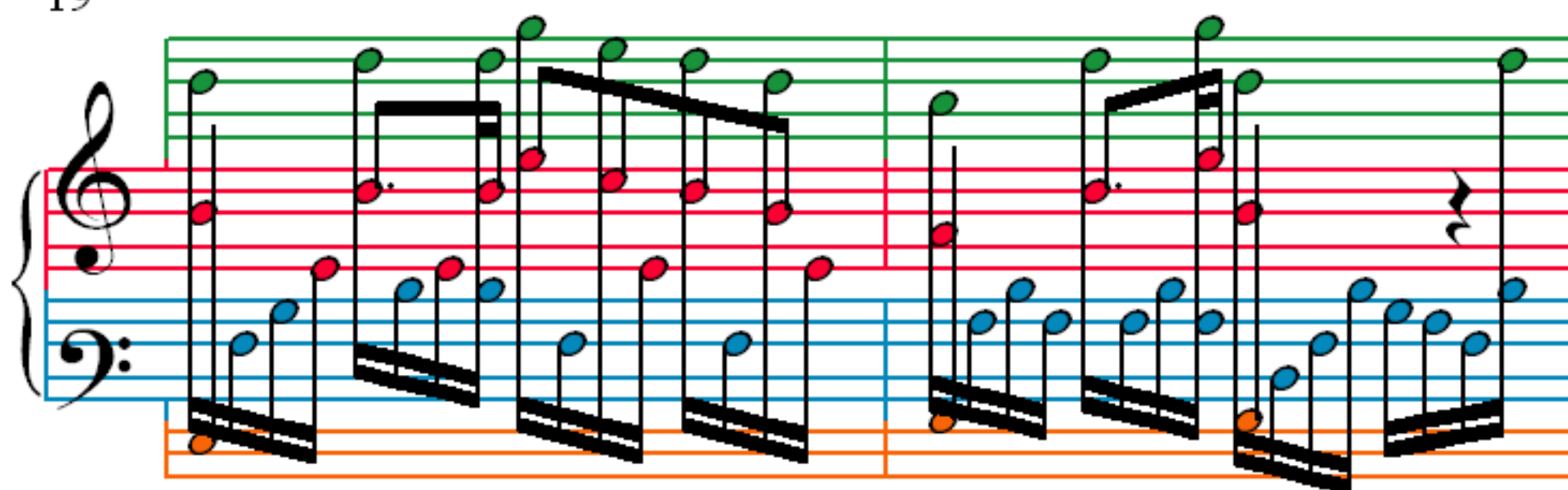
15

Exercise 15, measures 1-4. The notation is on a grand staff with three systems. The top system (measures 1-2) features a treble clef with a green line, a red line, and a blue line. The middle system (measures 3-4) features a bass clef with a blue line, a red line, and a green line. The bottom system (measures 5-6) features a bass clef with a blue line, a red line, and a green line. The notes are colored green, red, and blue. The exercise consists of a sequence of chords and single notes, with a final measure containing a whole note chord.

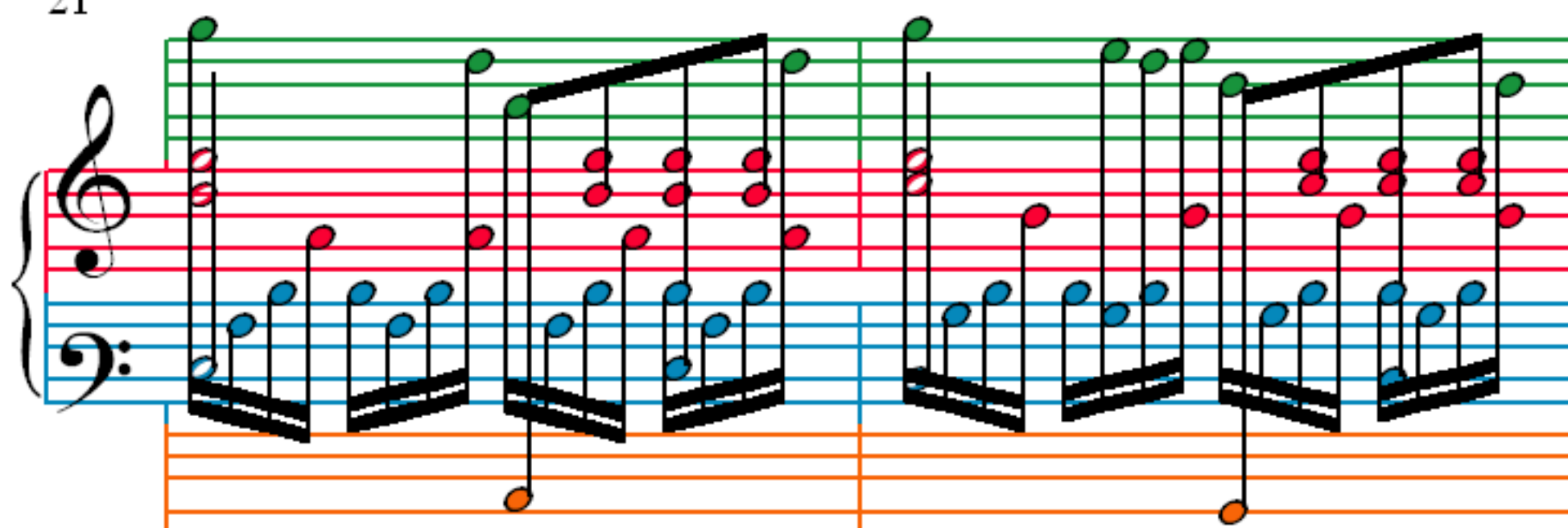
17

Exercise 17, measures 1-4. The notation is on a grand staff with three systems. The top system (measures 1-2) features a treble clef with a green line, a red line, and a blue line. The middle system (measures 3-4) features a bass clef with a blue line, a red line, and a green line. The bottom system (measures 5-6) features a bass clef with a blue line, a red line, and a green line. The notes are colored green, red, and blue. The exercise consists of a sequence of chords and single notes, with a final measure containing a whole note chord.

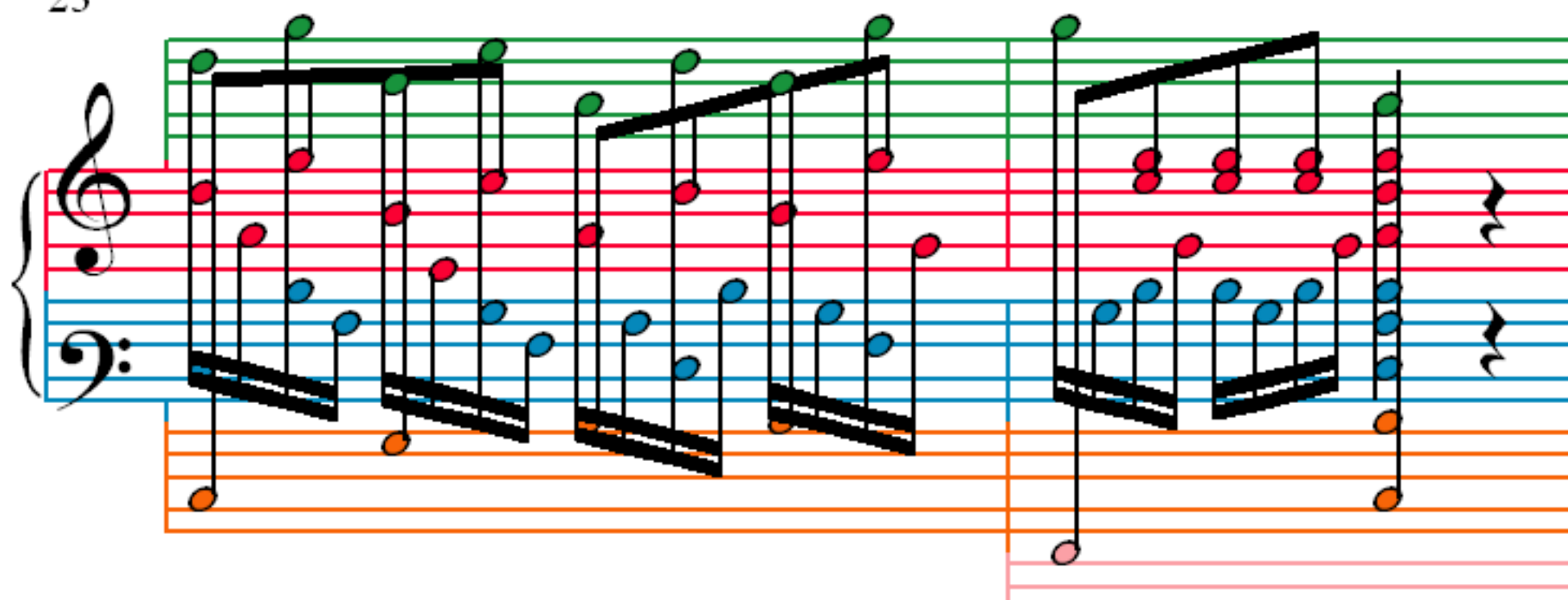
19



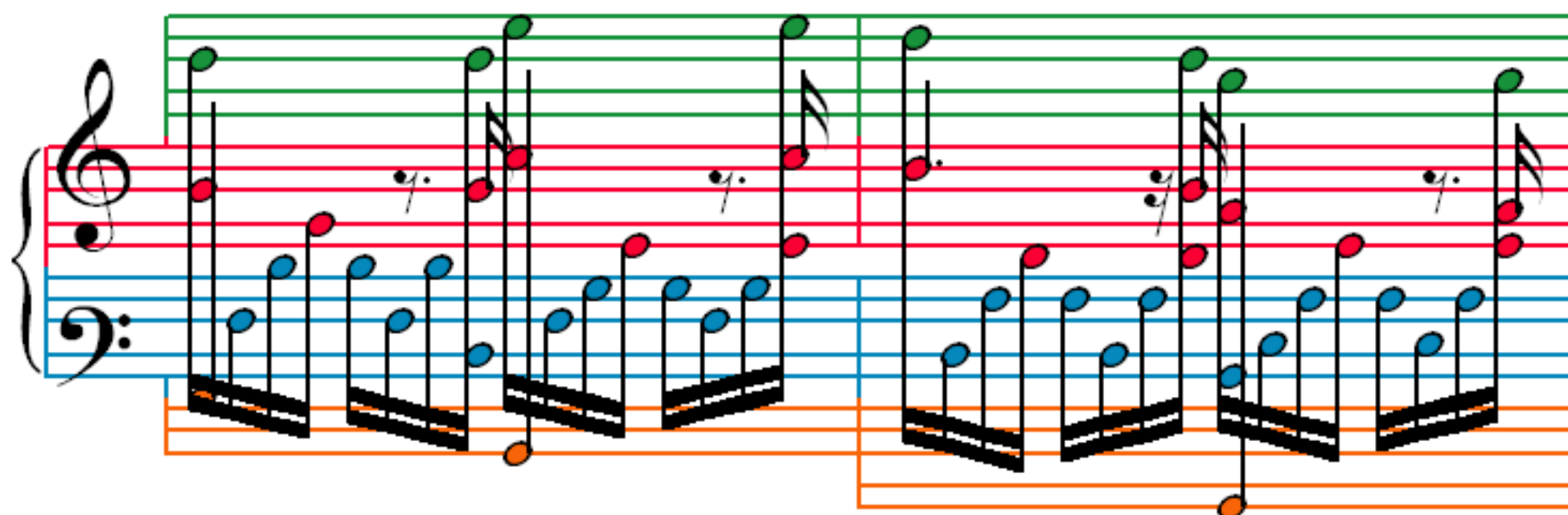
21



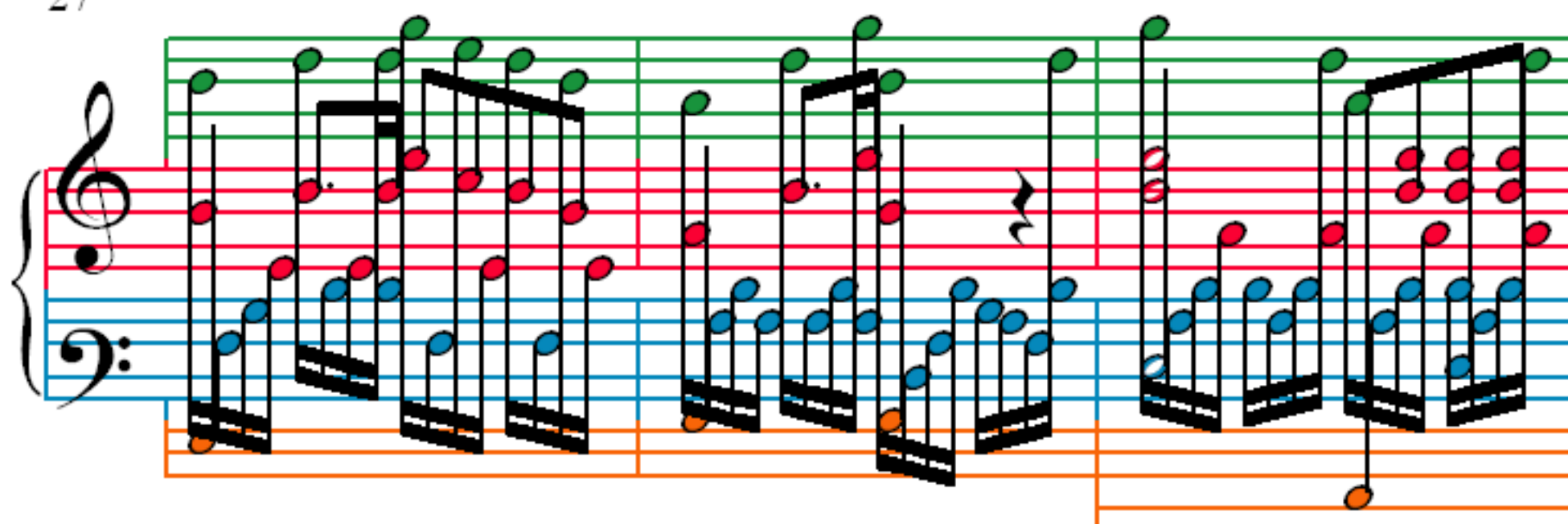
23



25



27



30

