

Dussek Op46 4

Six sonates faciles pour le Piano Forte (IV)

J. L. Dussek (1760–1812)

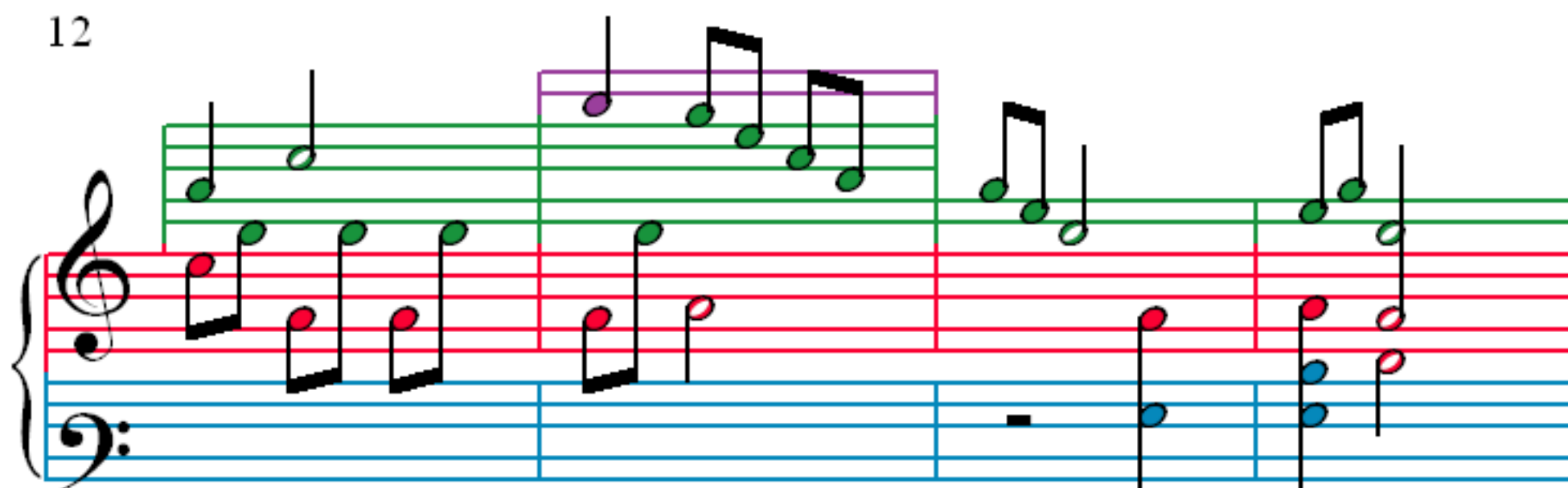
1

3

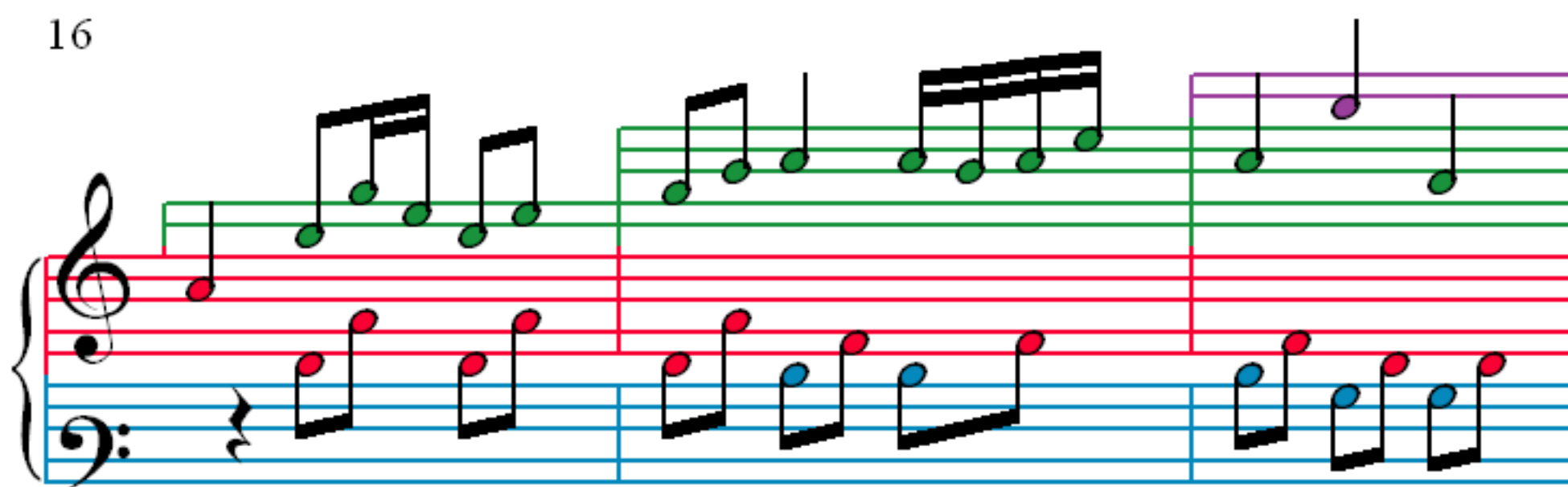
6

9

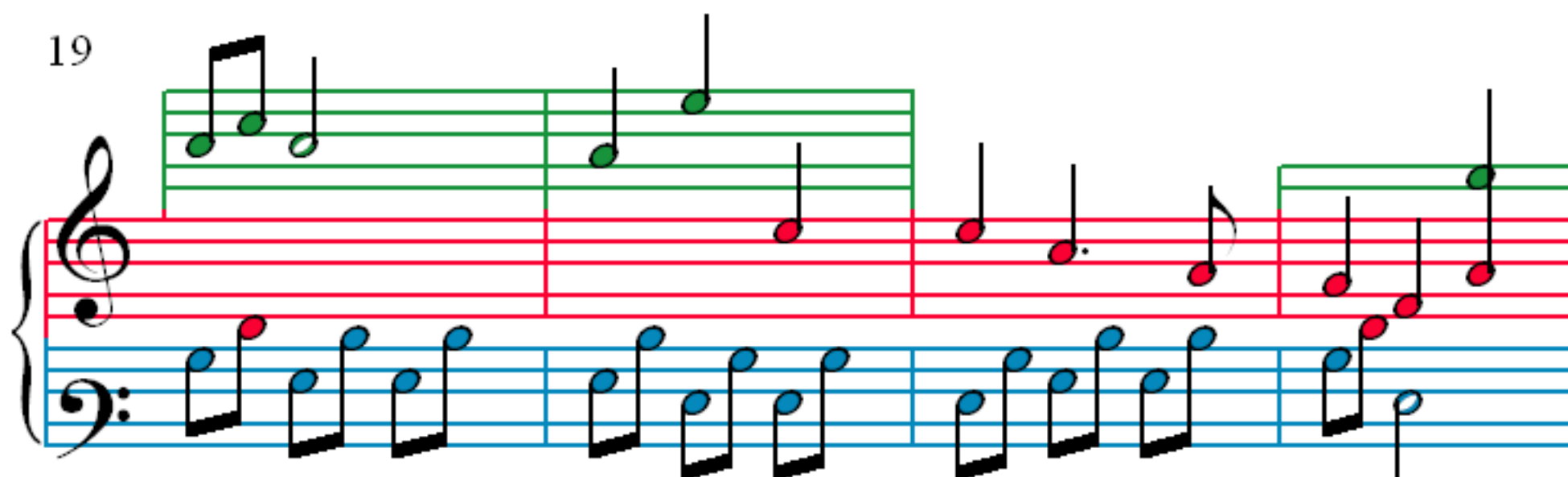
12



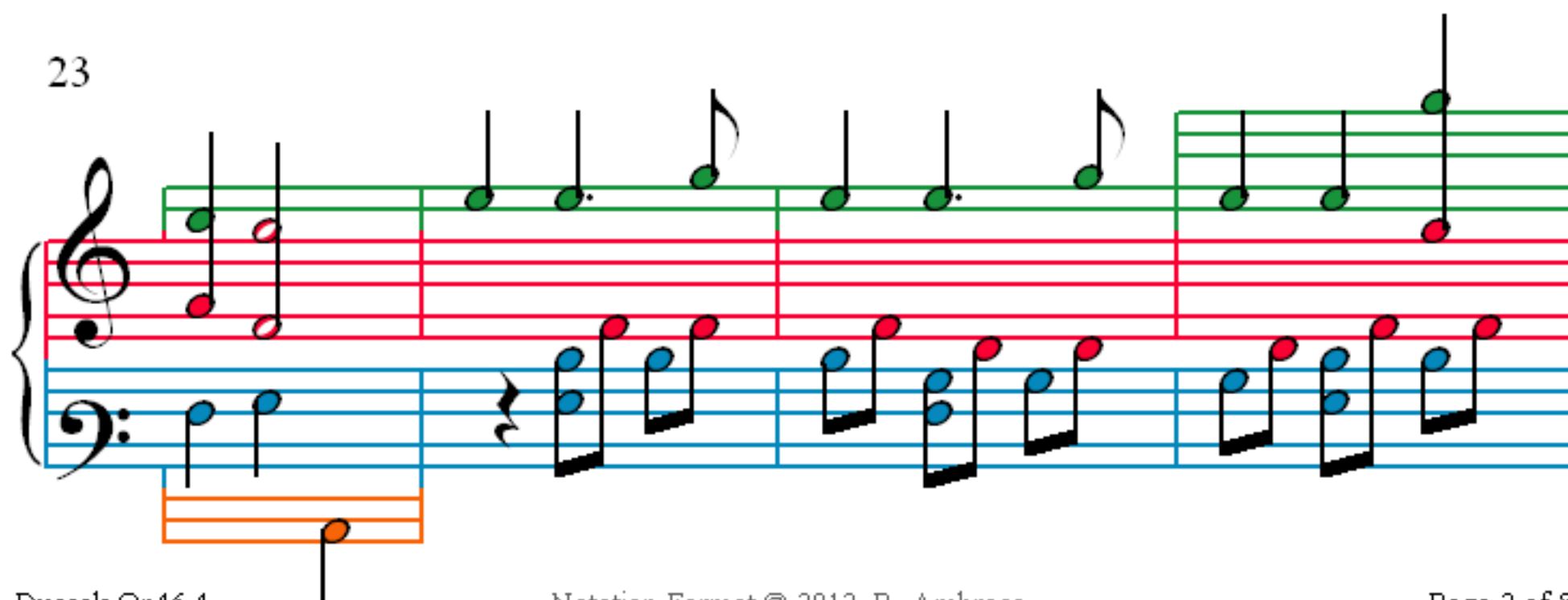
16



19



23



27

Measures 27-30: Treble clef (green staff) contains quarter and eighth notes. Bass clef (blue staff) contains eighth and sixteenth notes. Red lines connect corresponding notes between the two staves.

31

Measures 31-33: Treble clef (green staff) contains quarter and eighth notes. Bass clef (blue staff) contains eighth and sixteenth notes. Red lines connect corresponding notes. Measure 33 has a repeat sign in the bass clef.

34

Measures 34-36: Treble clef (green staff) contains quarter and eighth notes. Bass clef (blue staff) contains eighth and sixteenth notes. Red lines connect corresponding notes. Measure 36 has a repeat sign in the bass clef.

37

Measures 37-40: Treble clef (green staff) contains quarter and eighth notes. Bass clef (blue staff) contains eighth and sixteenth notes. Red lines connect corresponding notes. Measure 40 has a repeat sign in the bass clef.

41

Measures 41-44. Treble clef: green notes (F4, G4, A4, B4, C5, B4, A4, G4, F4). Bass clef: blue notes (C3, D3, E3, F3, G3, A3, B3, C4). Measure 44 has an orange staff extension for the bass line.

45

Measures 45-47. Treble clef: red notes (F4, G4, A4, B4, C5, B4, A4, G4). Bass clef: blue notes (C3, D3, E3, F3, G3, A3, B3, C4). Measure 47 has a green staff extension for the treble line.

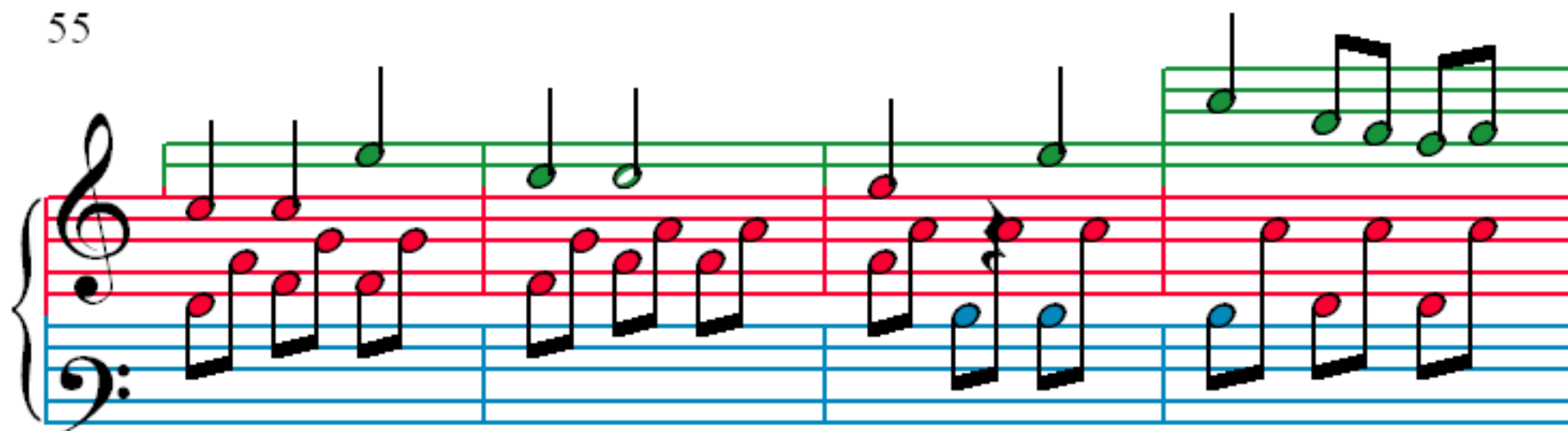
48

Measures 48-50. Treble clef: green notes (F4, G4, A4, B4, C5, B4, A4, G4). Bass clef: blue notes (C3, D3, E3, F3, G3, A3, B3, C4). Measure 50 has a green staff extension for the treble line.

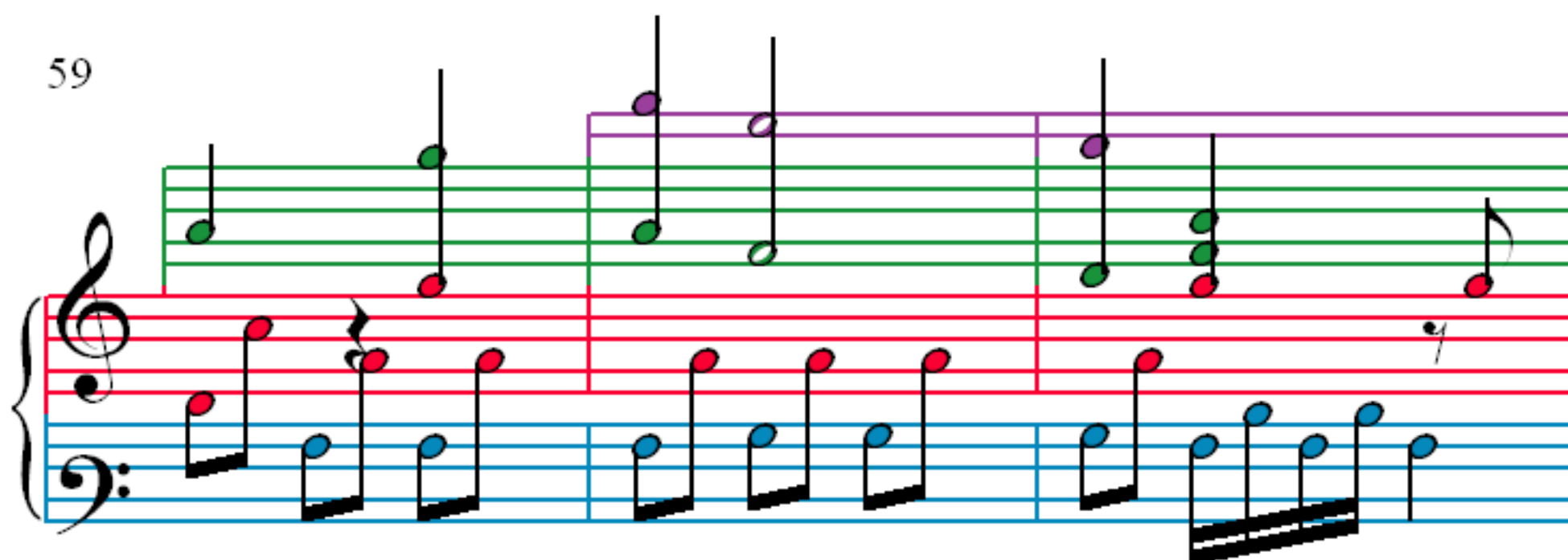
51

Measures 51-54. Treble clef: purple notes (F4, G4, A4, B4, C5, B4, A4, G4). Bass clef: blue notes (C3, D3, E3, F3, G3, A3, B3, C4). Measure 54 has an orange staff extension for the bass line.

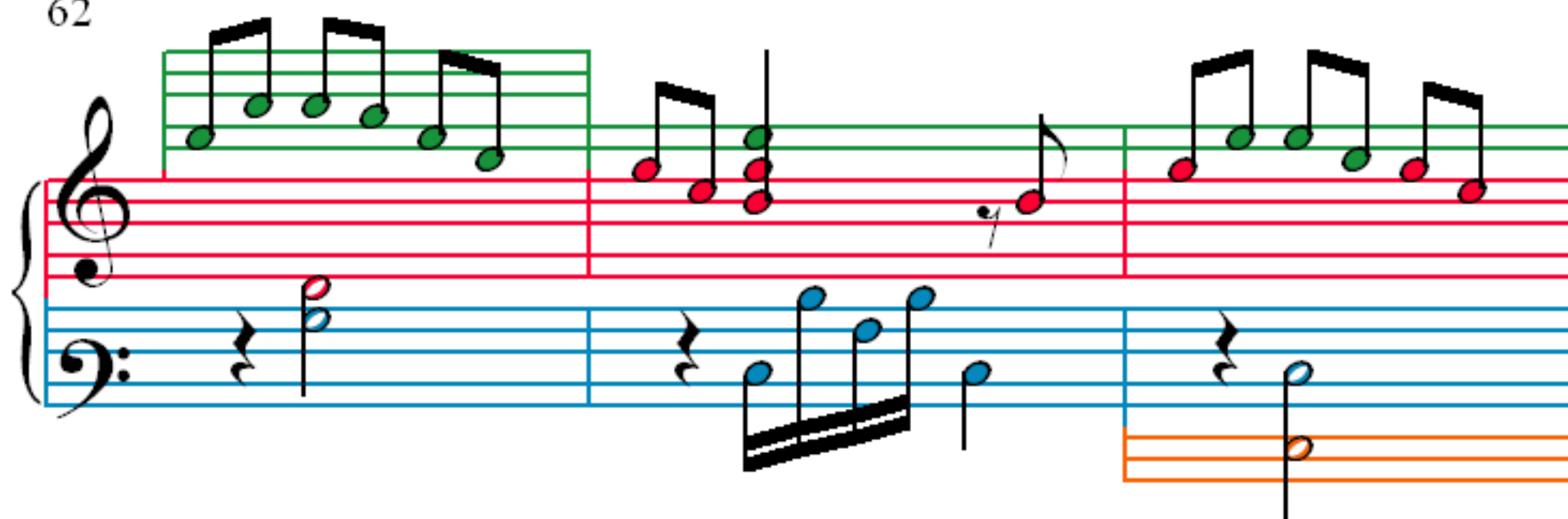
55



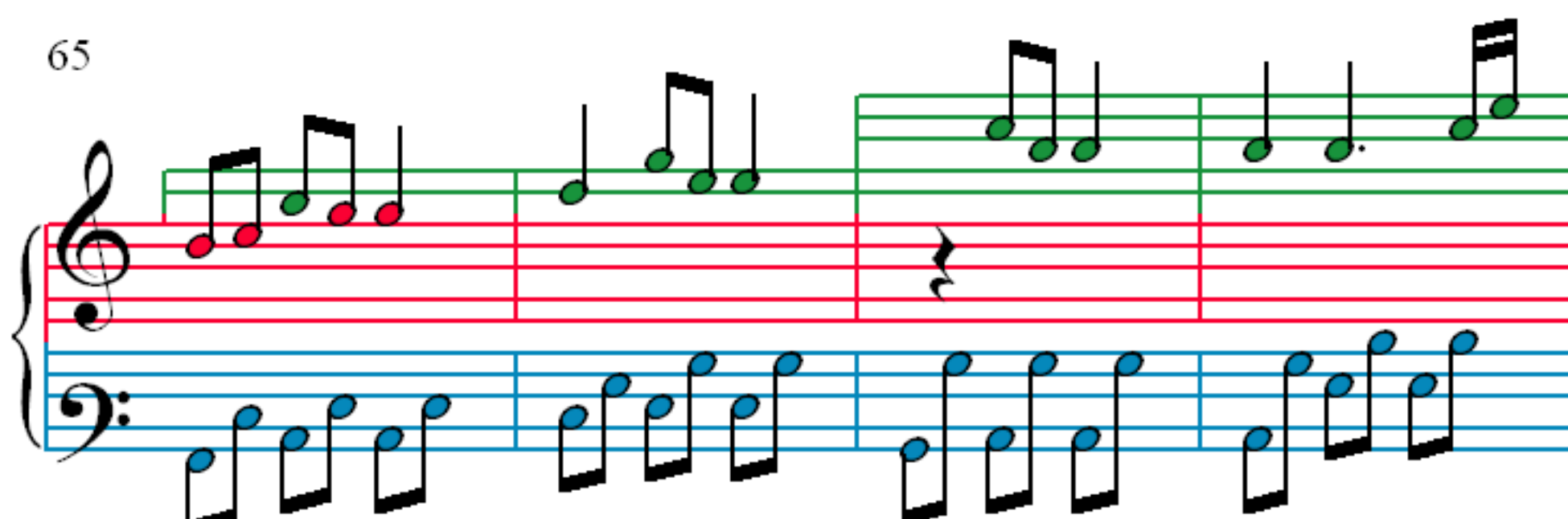
59



62



65



69

Measures 69-71. Treble clef: green notes. Bass clef: blue notes. Measure 71 ends with a fermata on a blue note in the bass.

72

Measures 72-74. Treble clef: green notes. Bass clef: blue notes. Measure 74 ends with an orange note in the bass.

75

Measures 75-78. Treble clef: red notes. Bass clef: blue notes. Measures 77-78 have orange notes in the bass.

79

Measures 79-82. Treble clef: red notes. Bass clef: blue notes. Measures 79-80 have orange notes in the bass.

83

Measures 83-86 of a musical score. The system consists of a grand staff with a treble and bass clef. The treble staff has a green staff line above it. The bass staff has a blue staff line above it. The music is written in a key with one flat. Measure 83: Treble has a quarter note G4, a quarter note A4, and a quarter rest. Bass has a quarter note G3, a quarter note A3, and a quarter note B3. Measure 84: Treble has a quarter note B4, a quarter note C5, and a quarter note D5. Bass has a quarter note C4, a quarter note D4, and a quarter note E4. Measure 85: Treble has a quarter note E5, a quarter note F5, and a quarter note G5. Bass has a quarter note F4, a quarter note G4, and a quarter note A4. Measure 86: Treble has a quarter note A5, a quarter note B5, and a quarter note C6. Bass has a quarter note B4, a quarter note C5, and a quarter note D5. There is an orange staff line below the bass staff for measures 83-86.

87

Measures 87-90 of a musical score. The system consists of a grand staff with a treble and bass clef. The treble staff has a green staff line above it. The bass staff has a blue staff line above it. The music is written in a key with one flat. Measure 87: Treble has a quarter note G4, a quarter note A4, and a quarter note B4. Bass has a quarter note G3, a quarter note A3, and a quarter note B3. Measure 88: Treble has a quarter note C5, a quarter note D5, and a quarter note E5. Bass has a quarter note C4, a quarter note D4, and a quarter note E4. Measure 89: Treble has a quarter note F5, a quarter note G5, and a quarter note A5. Bass has a quarter note F4, a quarter note G4, and a quarter note A4. Measure 90: Treble has a quarter note B5, a quarter note C6, and a quarter note D6. Bass has a quarter note B4, a quarter note C5, and a quarter note D5.

91

Measures 91-94 of a musical score. The system consists of a grand staff with a treble and bass clef. The treble staff has a green staff line above it. The bass staff has a blue staff line above it. The music is written in a key with one flat. Measure 91: Treble has a quarter note G4, a quarter note A4, and a quarter note B4. Bass has a quarter note G3, a quarter note A3, and a quarter note B3. Measure 92: Treble has a quarter note C5, a quarter note D5, and a quarter note E5. Bass has a quarter note C4, a quarter note D4, and a quarter note E4. Measure 93: Treble has a quarter note F5, a quarter note G5, and a quarter note A5. Bass has a quarter note F4, a quarter note G4, and a quarter note A4. Measure 94: Treble has a quarter note B5, a quarter note C6, and a quarter note D6. Bass has a quarter note B4, a quarter note C5, and a quarter note D5.

95

Measures 95-98 of a musical score. The system consists of a grand staff with a treble and bass clef. The treble staff has a green staff line above it. The bass staff has a blue staff line above it. The music is written in a key with one flat. Measure 95: Treble has a quarter note G4, a quarter note A4, and a quarter note B4. Bass has a quarter note G3, a quarter note A3, and a quarter note B3. Measure 96: Treble has a quarter note C5, a quarter note D5, and a quarter note E5. Bass has a quarter note C4, a quarter note D4, and a quarter note E4. Measure 97: Treble has a quarter note F5, a quarter note G5, and a quarter note A5. Bass has a quarter note F4, a quarter note G4, and a quarter note A4. Measure 98: Treble has a quarter note B5, a quarter note C6, and a quarter note D6. Bass has a quarter note B4, a quarter note C5, and a quarter note D5.

98

100

103

106