

# The Stars and Stripes Forever

J. P. Sousa (1854–1932)

1

4

7

10

13

16

19

22

25

28

31

34

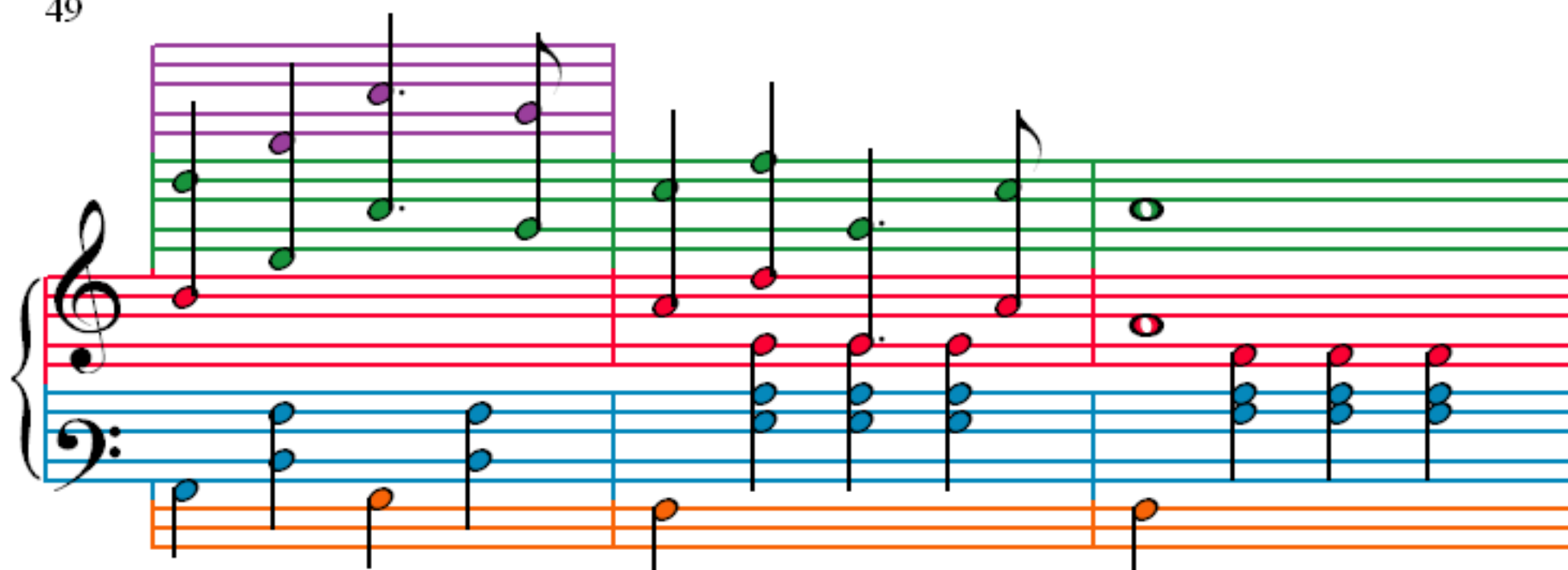
37

40

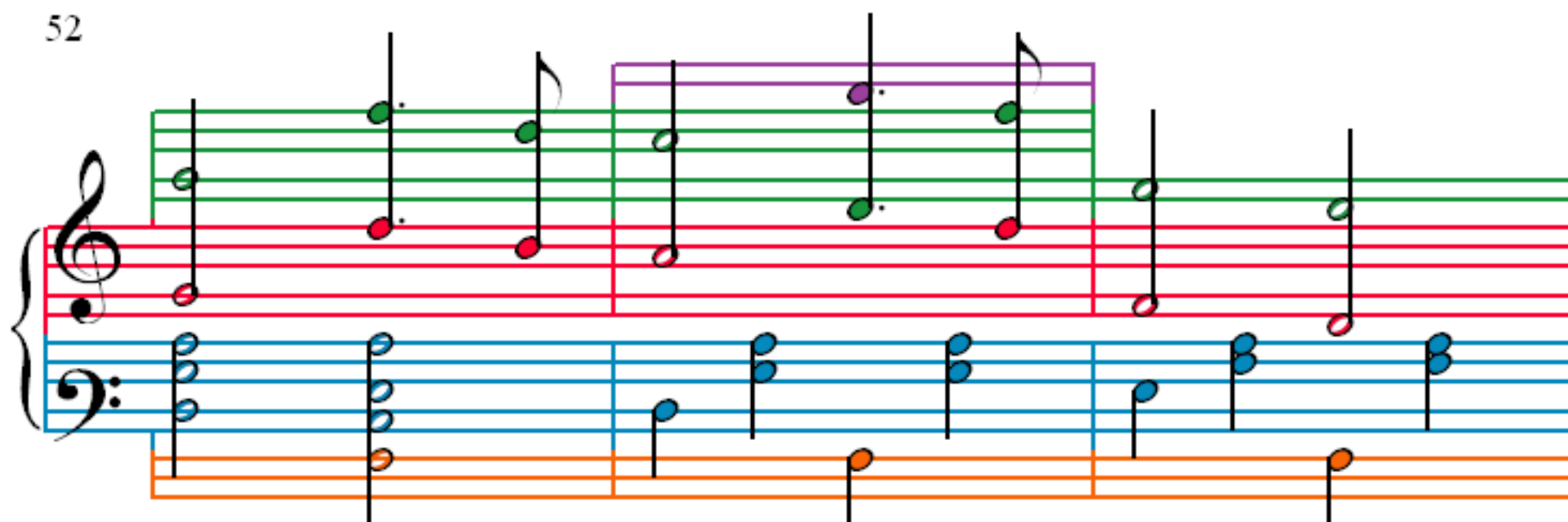
43

46

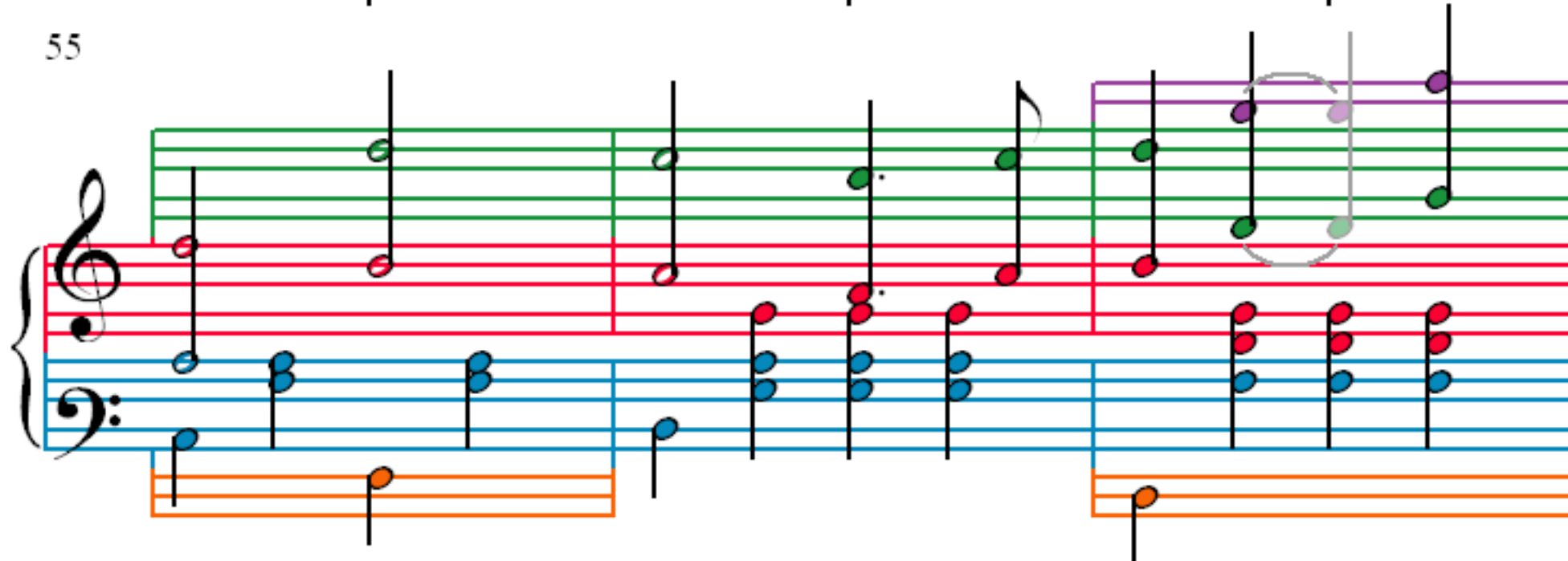
49



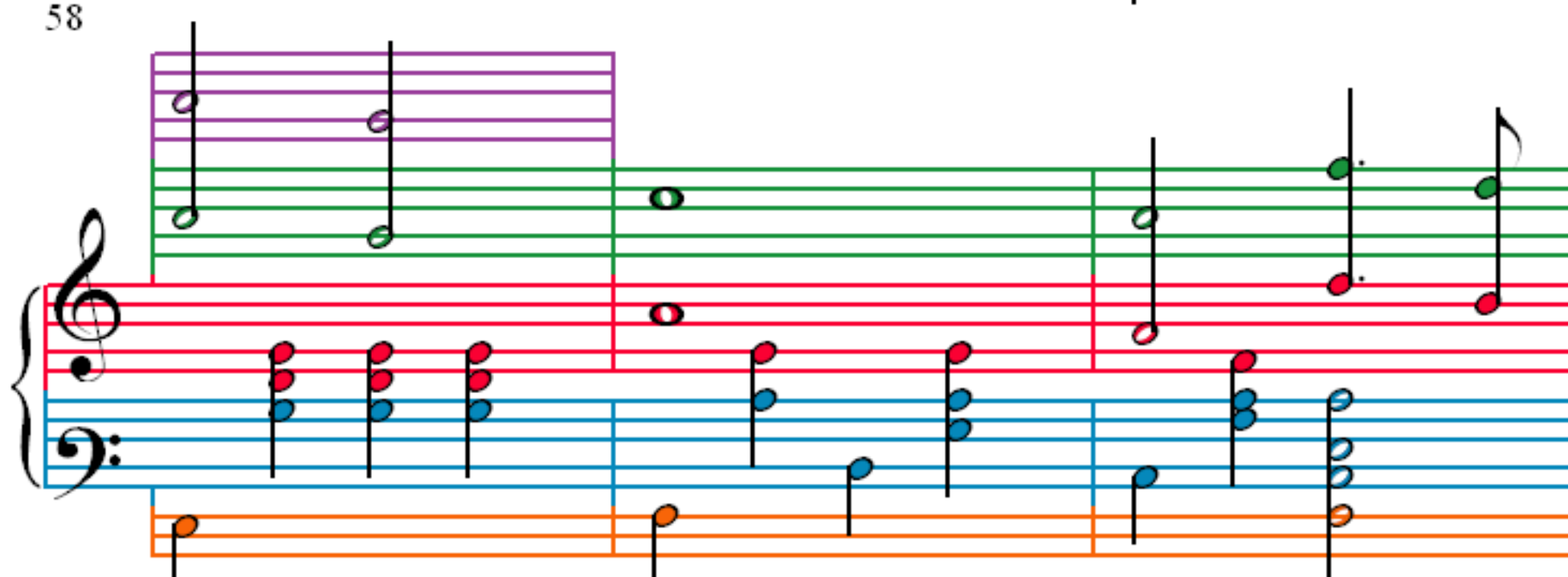
52



55



58



61

Measures 61-63. The treble staff features a purple box around measures 61-62. The bass staff and the orange staff below have blue notes. The treble staff has green notes in measures 61-62 and red notes in measure 63.

64

Measures 64-66. The treble staff features a purple box around measures 64-65. The bass staff and the orange staff below have blue notes. The treble staff has green notes in measures 64-65 and red notes in measure 66.

67

Measures 67-69. The treble staff features a green box around measure 67. The bass staff and the orange staff below have blue notes. The treble staff has green notes in measure 67 and red notes in measures 68-69.

70

Measures 70-72. The treble staff has green notes in measure 70 and red notes in measures 71-72. The bass staff and the orange staff below have blue notes.

73

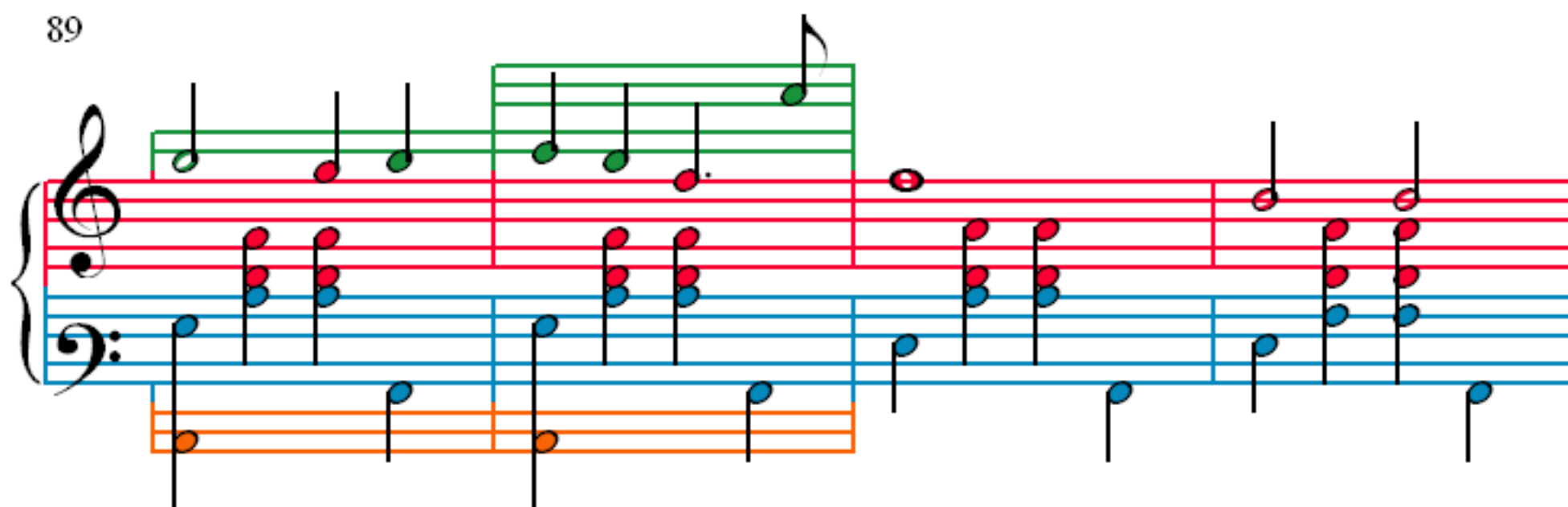
77

81

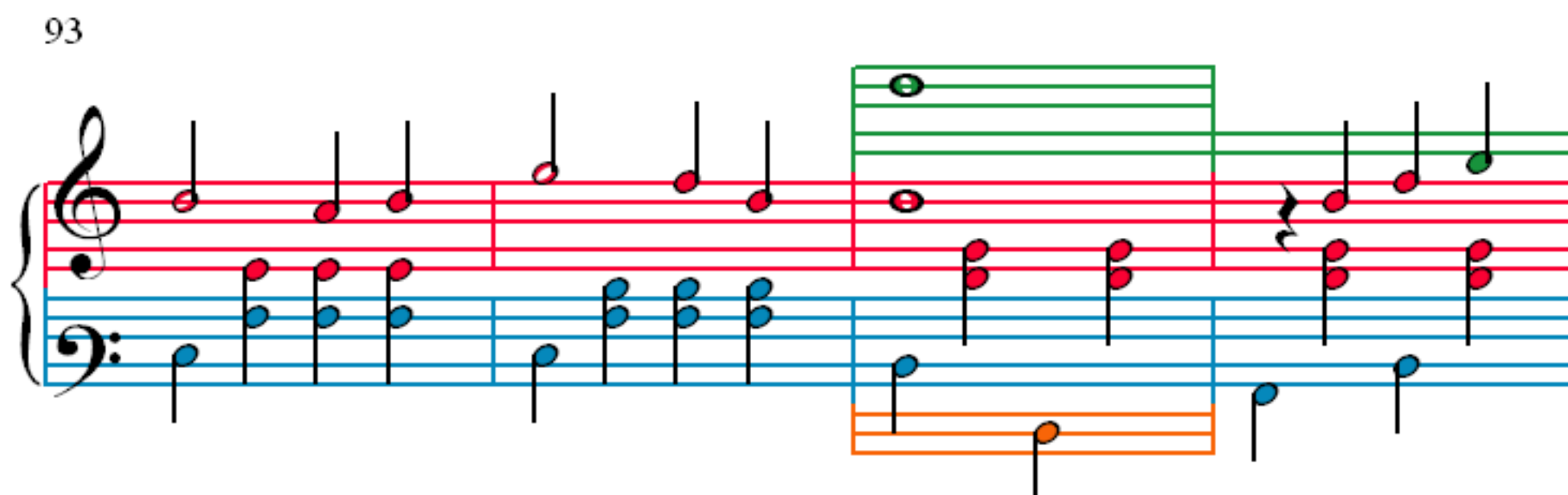
85



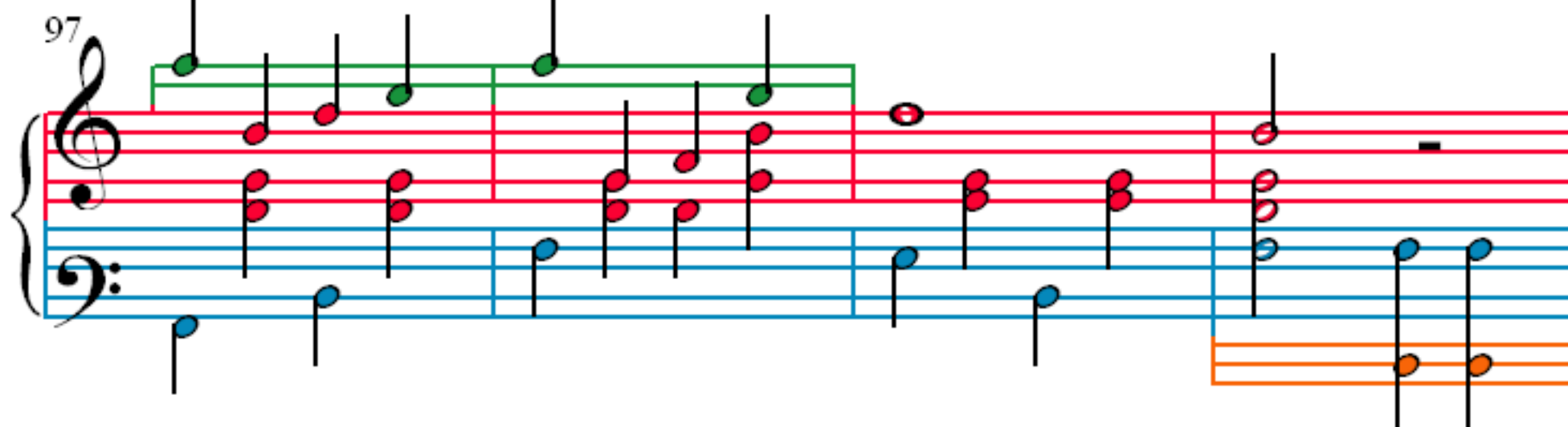
89



93



97



101





105

109

113

117

120

123

126

129

132

135

138

141

144

144

This block shows measures 144 through 148 of the musical score. The notation continues with the same four-staff system. The piano accompaniment in the lower staves (blue and orange) features chords and single notes. The vocal line in the upper staves (green and purple) continues with various note values, including quarter and eighth notes, and rests. The measure numbers 144, 145, 146, 147, and 148 are indicated at the top of the system.

147

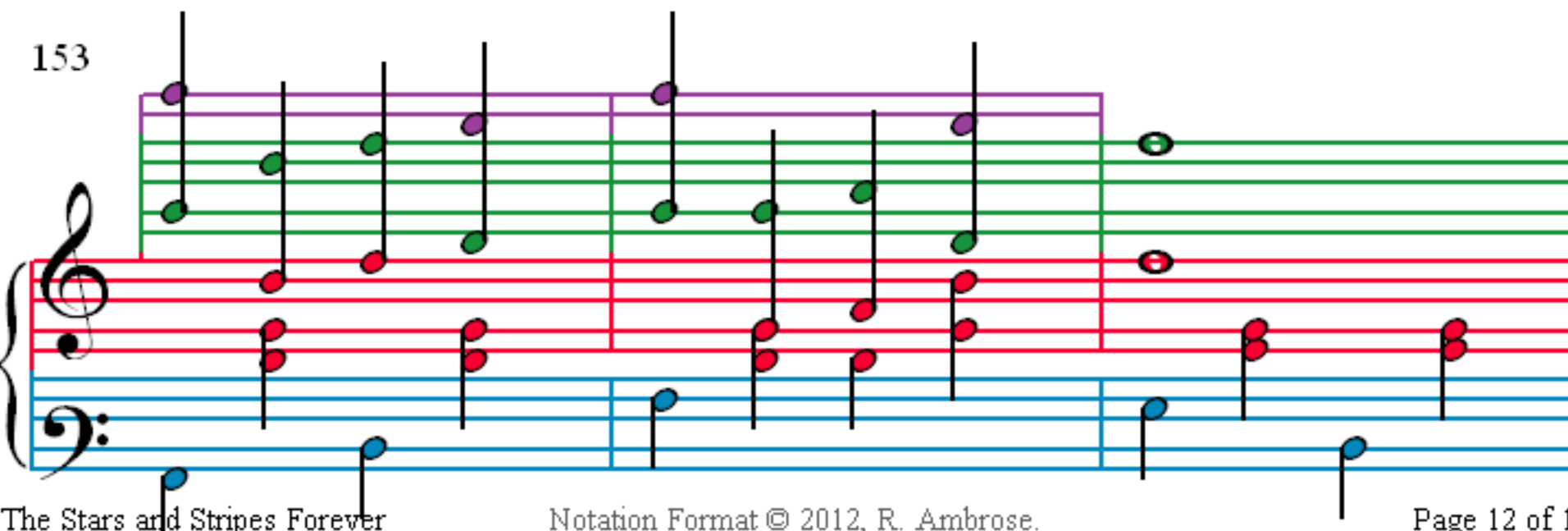
147

150

A musical score for the song 'The Rose Tree'. It features three staves: a vocal line in treble clef, a piano accompaniment in bass clef, and a guitar line in a separate system. The vocal line has green notes, the piano has red notes, and the guitar has blue notes. The score is divided into three measures by vertical bar lines. The first measure shows the vocal melody and piano accompaniment. The second measure shows the vocal melody and piano accompaniment. The third measure shows the vocal melody and piano accompaniment. The guitar line is shown in a separate system below the piano accompaniment.

153

153



The Stars and Stripes Forever

Notation Format © 2012, R. Ambrose.

Page 12 of 16

156

160

163

166

170

Measures 170-172. Treble clef: Measure 170 has four green notes (F4, G4, A4, B4) and four red notes (C4, D4, E4, F4). Measure 171 has four green notes (G4, A4, B4, C5) and four red notes (D4, E4, F4, G4). Measure 172 has four green notes (A4, B4, C5, D5) and four red notes (E4, F4, G4, A4). Bass clef: Measure 170 has four blue notes (C3, D3, E3, F3). Measure 171 has four blue notes (G2, A2, B2, C3). Measure 172 has four blue notes (D3, E3, F3, G3). A black wedge is placed over the notes in measure 172.

173

Measures 173-175. Treble clef: Measure 173 has four green notes (F4, G4, A4, B4) and four red notes (C4, D4, E4, F4). Measure 174 has four green notes (G4, A4, B4, C5) and four red notes (D4, E4, F4, G4). Measure 175 has four green notes (A4, B4, C5, D5) and four red notes (E4, F4, G4, A4). Bass clef: Measure 173 has four blue notes (C3, D3, E3, F3). Measure 174 has four blue notes (G2, A2, B2, C3). Measure 175 has four blue notes (D3, E3, F3, G3). A black wedge is placed over the notes in measure 175.

176

Measures 176-181. Treble clef: Measure 176 has four green notes (F4, G4, A4, B4) and four red notes (C4, D4, E4, F4). Measure 177 has four green notes (G4, A4, B4, C5) and four red notes (D4, E4, F4, G4). Measure 178 has four green notes (A4, B4, C5, D5) and four red notes (E4, F4, G4, A4). Measure 179 has four green notes (F4, G4, A4, B4) and four red notes (C4, D4, E4, F4). Measure 180 has four green notes (G4, A4, B4, C5) and four red notes (D4, E4, F4, G4). Measure 181 has four green notes (A4, B4, C5, D5) and four red notes (E4, F4, G4, A4). Bass clef: Measure 176 has four blue notes (C3, D3, E3, F3). Measure 177 has four blue notes (G2, A2, B2, C3). Measure 178 has four blue notes (D3, E3, F3, G3). Measure 179 has four orange notes (C3, D3, E3, F3). Measure 180 has four orange notes (G2, A2, B2, C3). Measure 181 has four orange notes (D3, E3, F3, G3). A black wedge is placed over the notes in measure 181.

179

Measures 179-181. Treble clef: Measure 179 has four green notes (F4, G4, A4, B4) and four red notes (C4, D4, E4, F4). Measure 180 has four green notes (G4, A4, B4, C5) and four red notes (D4, E4, F4, G4). Measure 181 has four green notes (A4, B4, C5, D5) and four red notes (E4, F4, G4, A4). Bass clef: Measure 179 has four blue notes (C3, D3, E3, F3). Measure 180 has four blue notes (G2, A2, B2, C3). Measure 181 has four orange notes (D3, E3, F3, G3). A black wedge is placed over the notes in measure 181.

182

186

190

194

The image displays a musical score for the piece 'The Stars and Stripes Forever'. It is organized into four systems, each corresponding to a measure number: 182, 186, 190, and 194. Each system contains three staves. The top staff is a single treble clef staff with a purple line. The middle staff is a grand staff (treble and bass clefs) with red and blue lines. The bottom staff is a single bass clef staff with an orange line. The notation includes various note values (quarter, eighth, and sixteenth notes), rests, and ties. The notes are color-coded: purple for the top staff, red for the treble part of the grand staff, blue for the bass part of the grand staff, and orange for the bottom staff. The score is written in a standard musical notation format with a key signature of one sharp (F#) and a 2/4 time signature.



198

202

205

209