

N12 Coro di mattadori spagnuoli

La Traviata

G. Verdi (1813–1901)

4

The musical score for Example 1 consists of four staves. The top two staves are for the piano, and the bottom two are for the guitar. The piano part is written in treble and bass clefs, while the guitar part is also written in treble and bass clefs. The piano melody in the treble clef features a sequence of eighth notes and triplets. The piano bass line in the bass clef consists of a steady eighth-note accompaniment. The guitar part features a melody in the treble clef with triplets and a bass line in the bass clef with eighth notes. The score is divided into three measures by vertical bar lines.

A musical score for the song 'The Rose Tree'. The score is written for a piano, with a treble clef on the upper staff and a bass clef on the lower staff. The key signature is one flat (B-flat), and the time signature is 3/4. The melody is primarily in the treble staff, featuring several triplet markings (indicated by a '3' in a bracket) over eighth notes. The bass staff provides a harmonic accompaniment, also featuring triplet markings. The score is divided into three measures by vertical bar lines. The first measure contains the main melody and accompaniment. The second measure continues the melody and accompaniment. The third measure concludes the phrase with a final chord in the bass staff.

10

13

16

19

22

25

28

31

34

37

40

43

46

49

52

55

58

61

64

67

70

73

76

79

82

Measures 82-85 of the musical score. The system consists of a grand staff with a treble clef and a bass clef. The treble staff has a purple line at the top. The bass staff has a blue line at the bottom. The music is written in a key with one flat (B-flat). The melody in the treble staff starts on a green note (G4), moves to a purple note (A4), and then to a green note (B4). The bass staff features a series of chords, with notes colored red, blue, and orange. The notation includes various note values and rests, with some notes beamed together.

86

Measures 86-89 of the musical score. The system consists of a grand staff with a treble clef and a bass clef. The treble staff has a purple line at the top. The bass staff has a blue line at the bottom. The music is written in a key with one flat (B-flat). The melody in the treble staff starts on a purple note (A4), moves to a green note (B4), and then to a purple note (C5). The bass staff features a series of chords, with notes colored red, blue, and orange. The notation includes various note values and rests, with some notes beamed together.

90

Measures 90-93 of the musical score. The system consists of a grand staff with a treble clef and a bass clef. The treble staff has a purple line at the top. The bass staff has a blue line at the bottom. The music is written in a key with one flat (B-flat). The melody in the treble staff starts on a purple note (A4), moves to a green note (B4), and then to a purple note (C5). The bass staff features a series of chords, with notes colored red, blue, and orange. The notation includes various note values and rests, with some notes beamed together.

94

Measures 94-97 of the musical score. The system consists of a grand staff with a treble clef and a bass clef. The treble staff has a purple line and a green line. The bass staff has a blue line and an orange line. The music is written in a 2/4 time signature. Measures 94-97 show a sequence of chords and single notes, with some notes beamed together. The notes are colored purple, green, blue, and orange.

98

Measures 98-100 of the musical score. The system consists of a grand staff with a treble clef and a bass clef. The treble staff has a purple line and a green line. The bass staff has a blue line and an orange line. The music is written in a 2/4 time signature. Measures 98-100 show a sequence of chords and single notes, with some notes beamed together. The notes are colored purple, green, blue, and orange.

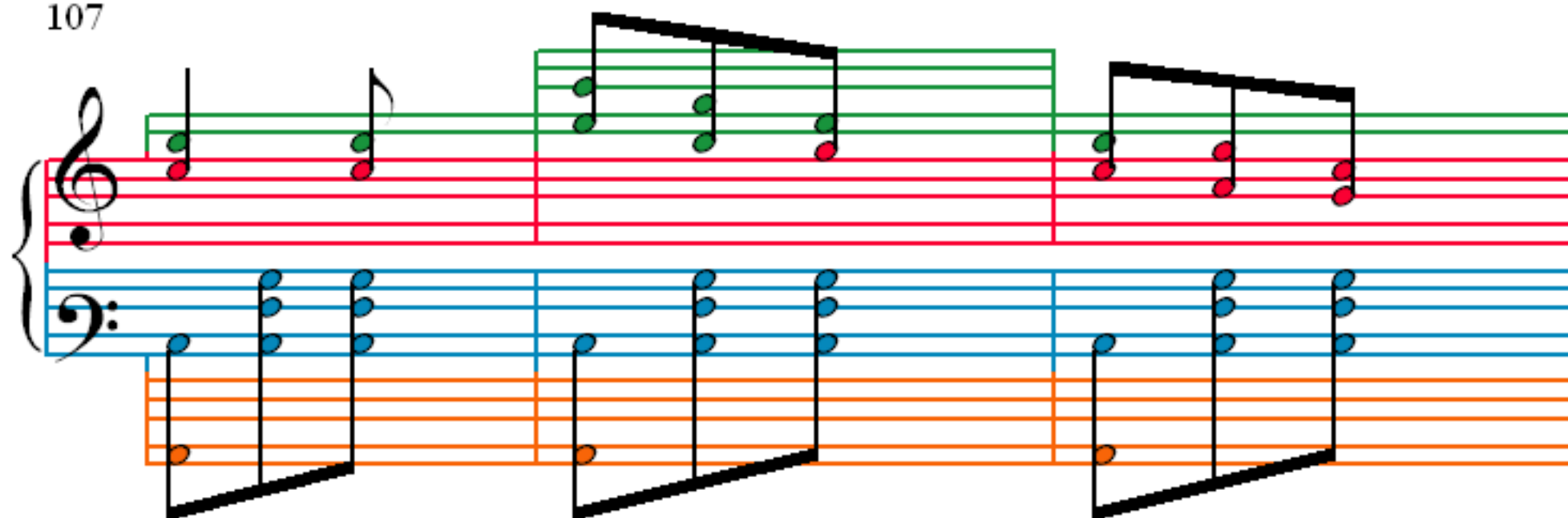
101

Measures 101-103 of the musical score. The system consists of a grand staff with a treble clef and a bass clef. The treble staff has a purple line and a green line. The bass staff has a blue line and an orange line. The music is written in a 2/4 time signature. Measures 101-103 show a sequence of chords and single notes, with some notes beamed together. The notes are colored purple, green, blue, and orange.

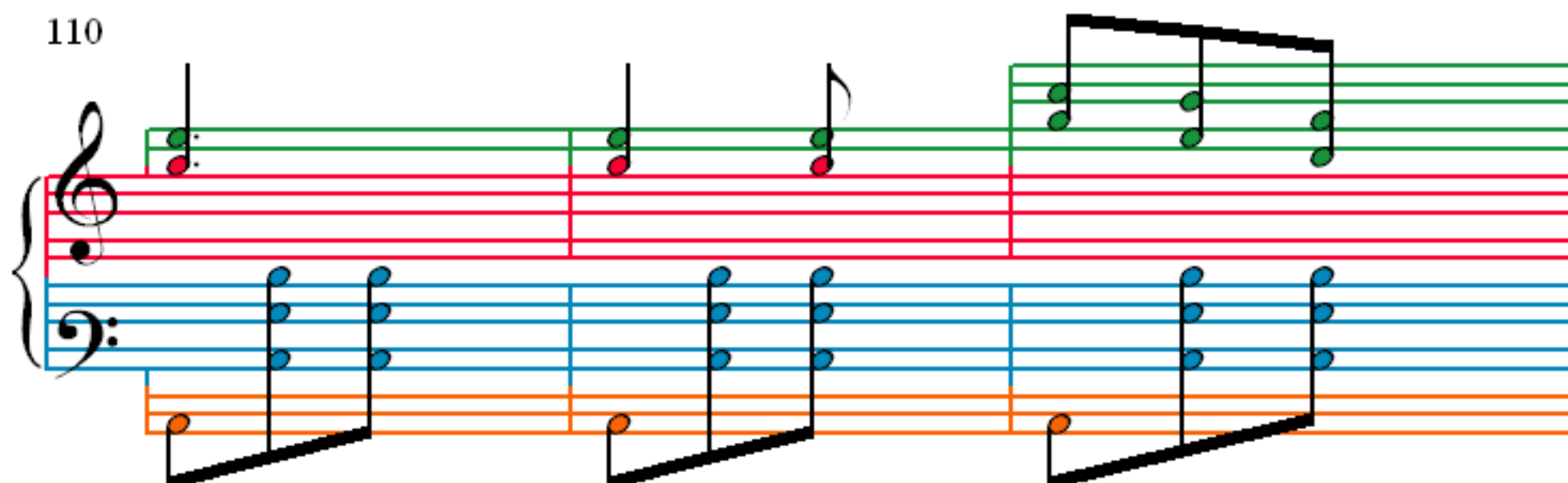
104

Measures 104-106 of the musical score. The system consists of a grand staff with a treble clef and a bass clef. The treble staff has a purple line and a green line. The bass staff has a blue line and an orange line. The music is written in a 2/4 time signature. Measures 104-106 show a sequence of chords and single notes, with some notes beamed together. The notes are colored purple, green, blue, and orange.

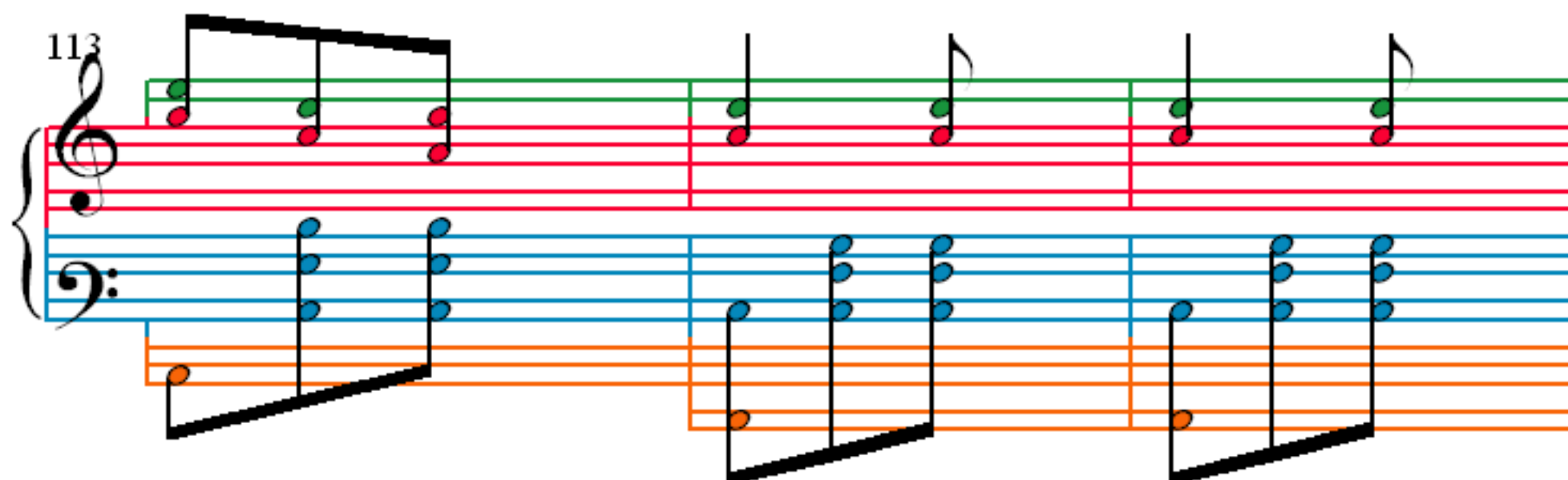
107



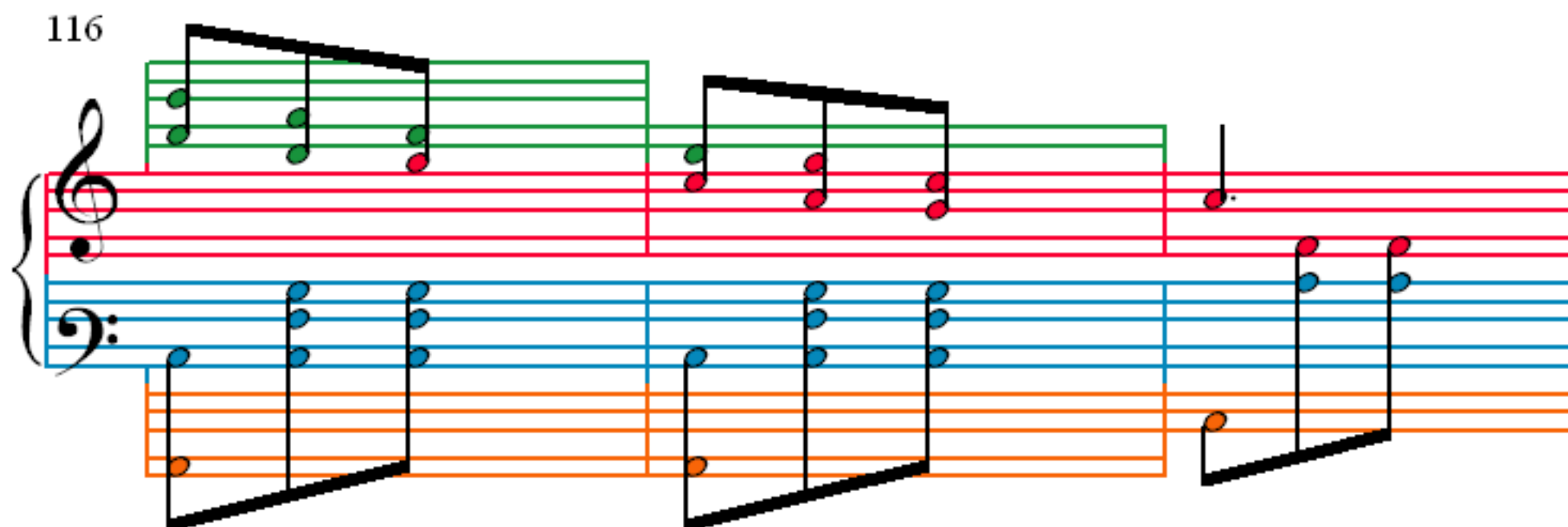
110



113



116



119

Measures 119-121. The system consists of three staves. The top staff (treble clef) has a purple line, a green line, and a red line. The middle staff (treble clef) has a red line. The bottom staff (bass clef) has a blue line. The notation includes various note values and rests, with some notes highlighted in green, purple, or red.

122

Measures 122-124. The system consists of three staves. The top staff (treble clef) has a purple line, a green line, and a red line. The middle staff (treble clef) has a red line. The bottom staff (bass clef) has a blue line. The notation includes various note values and rests, with some notes highlighted in green, purple, or red.

125

Measures 125-127. The system consists of three staves. The top staff (treble clef) has a purple line, a green line, and a red line. The middle staff (treble clef) has a red line. The bottom staff (bass clef) has a blue line. The notation includes various note values and rests, with some notes highlighted in green, purple, or red.

128

Measures 128-130. The system consists of three staves. The top staff (treble clef) has a purple line, a green line, and a red line. The middle staff (treble clef) has a red line. The bottom staff (bass clef) has a blue line. The notation includes various note values and rests, with some notes highlighted in green, purple, or red.

131

134

137

140

143

Measures 143-145. The system consists of three staves. The top staff (treble clef) has a purple background and contains a melodic line with eighth and quarter notes. The middle staff (treble clef) has a red background and contains a sustained chord. The bottom staff (bass clef) has a blue background and contains a bass line with eighth and quarter notes. Measure 145 ends with a double bar line.

146

Measures 146-148. The system consists of three staves. The top staff (treble clef) has a green background and contains a melodic line with quarter and eighth notes. The middle staff (treble clef) has a red background and contains a sustained chord. The bottom staff (bass clef) has a blue background and contains a bass line with eighth and quarter notes. Measure 148 ends with a double bar line.

149

Measures 149-151. The system consists of three staves. The top staff (treble clef) has a green background and contains a melodic line with quarter and eighth notes. The middle staff (treble clef) has a red background and contains a sustained chord. The bottom staff (bass clef) has a blue background and contains a bass line with eighth and quarter notes. Measure 151 ends with a double bar line.

152

Measures 152-154. The system consists of three staves. The top staff (treble clef) has a green background and contains a melodic line with quarter and eighth notes. The middle staff (treble clef) has a red background and contains a sustained chord. The bottom staff (bass clef) has a blue background and contains a bass line with eighth and quarter notes. Measure 154 ends with a double bar line.

155

158

161

164

167

Measures 167-170 of the musical score. The system consists of a grand staff with a treble clef and a bass clef. The treble staff has a red line, a green line, and a purple line. The bass staff has a blue line, a green line, and an orange line. The notation includes various chords and single notes, with some notes colored red, green, blue, or orange to match the staff lines. The measures are separated by vertical bar lines.

171

Measures 171-174 of the musical score. The system consists of a grand staff with a treble clef and a bass clef. The treble staff has a red line, a green line, and a purple line. The bass staff has a blue line, a green line, and an orange line. The notation includes various chords and single notes, with some notes colored red, green, blue, or orange to match the staff lines. The measures are separated by vertical bar lines.

175

Measures 175-178 of the musical score. The system consists of a grand staff with a treble clef and a bass clef. The treble staff has a red line, a green line, and a purple line. The bass staff has a blue line, a green line, and an orange line. The notation includes various chords and single notes, with some notes colored red, green, blue, or orange to match the staff lines. The measures are separated by vertical bar lines.

179

Measures 179-181 of a musical score. The system consists of three staves: a top staff with a treble clef and a grand staff with two bass staves. The top staff contains a melodic line with purple and green notes, featuring a double bar line and a repeat sign. The grand staff contains a bass line with blue and orange notes, also featuring a double bar line and a repeat sign. The measures are separated by vertical bar lines.

182

Measures 182-184 of a musical score. The system consists of three staves: a top staff with a treble clef and a grand staff with two bass staves. The top staff contains a melodic line with purple and green notes, featuring a double bar line and a repeat sign. The grand staff contains a bass line with blue and orange notes, also featuring a double bar line and a repeat sign. The measures are separated by vertical bar lines.

185

Measures 185-187 of a musical score. The system consists of three staves: a top staff with a treble clef and a grand staff with two bass staves. The top staff contains a melodic line with purple and green notes, featuring a double bar line and a repeat sign. The grand staff contains a bass line with blue and orange notes, also featuring a double bar line and a repeat sign. The measures are separated by vertical bar lines.

188

Measures 188-190 of a musical score. The system consists of three staves: a top staff with a treble clef and a grand staff with two bass staves. The top staff contains a melodic line with purple and green notes, featuring a double bar line and a repeat sign. The grand staff contains a bass line with blue and orange notes, also featuring a double bar line and a repeat sign. The measures are separated by vertical bar lines.