

3rd Part, Nr 6

Traditioner af Svenska Folk-Dansar

Traditional

1

Measures 1-3 of the 3rd Part, Nr 6. The notation is in 3/4 time. The treble clef staff has a key signature of one flat (B-flat). The bass clef staff has a key signature of one flat (B-flat). The melody is in the treble clef, and the bass line is in the bass clef. The melody consists of eighth and sixteenth notes, with some beamed sixteenth notes. The bass line consists of quarter and eighth notes. The notation is color-coded: red for the melody, blue for the bass line, and orange for the bass line.

4

Measures 4-6 of the 3rd Part, Nr 6. The notation is in 3/4 time. The treble clef staff has a key signature of one flat (B-flat). The bass clef staff has a key signature of one flat (B-flat). The melody is in the treble clef, and the bass line is in the bass clef. The melody consists of eighth and sixteenth notes, with some beamed sixteenth notes. The bass line consists of quarter and eighth notes. The notation is color-coded: red for the melody, blue for the bass line, and orange for the bass line.

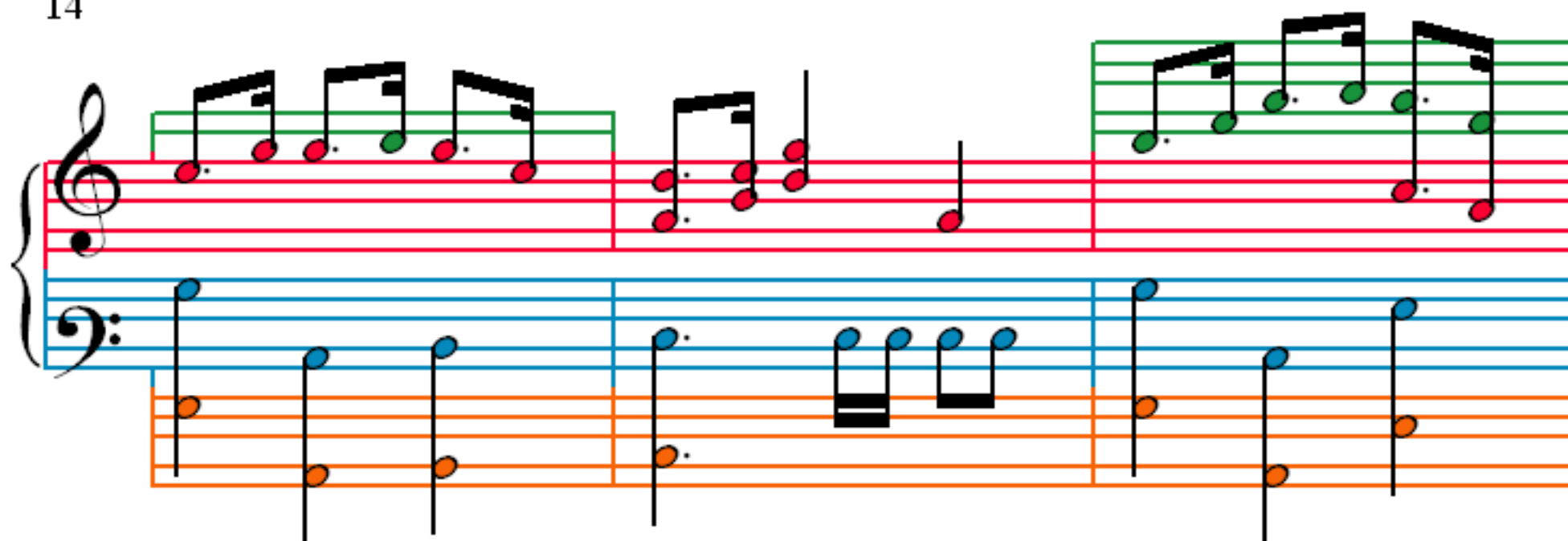
7

Measures 7-9 of the 3rd Part, Nr 6. The notation is in 3/4 time. The treble clef staff has a key signature of one flat (B-flat). The bass clef staff has a key signature of one flat (B-flat). The melody is in the treble clef, and the bass line is in the bass clef. The melody consists of eighth and sixteenth notes, with some beamed sixteenth notes. The bass line consists of quarter and eighth notes. The notation is color-coded: red for the melody, blue for the bass line, and orange for the bass line.

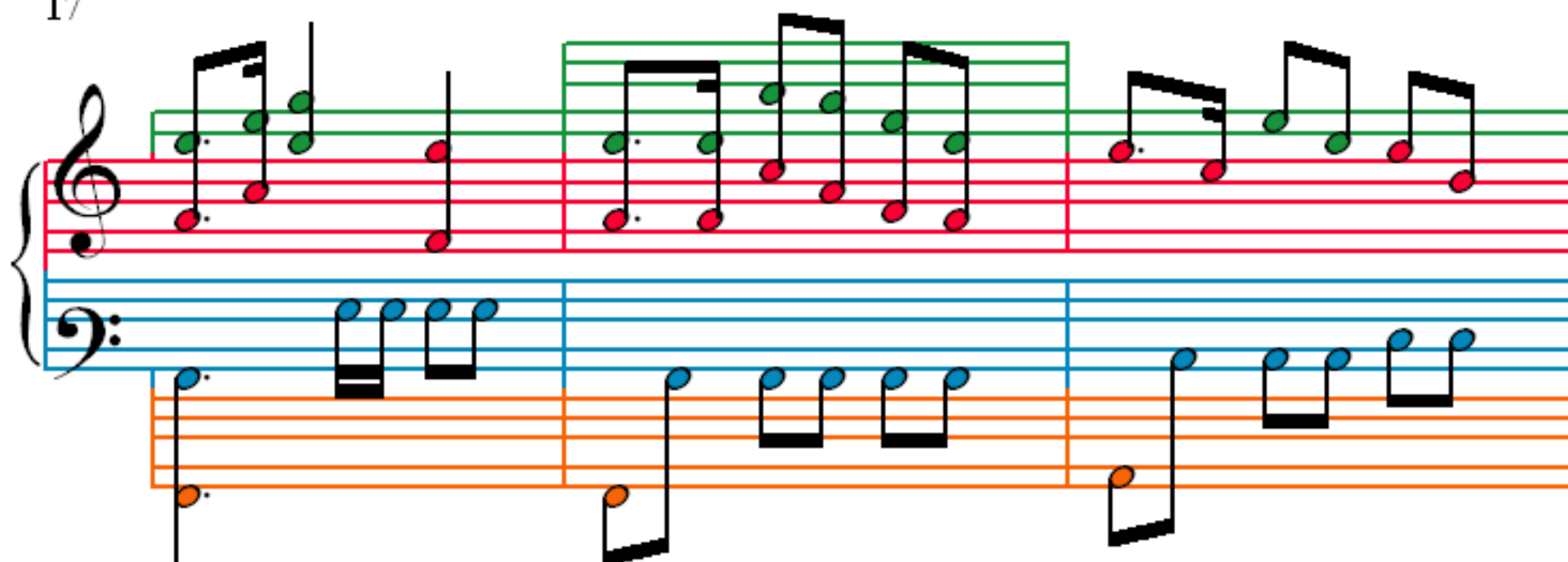
10

Measures 10-12 of the 3rd Part, Nr 6. The notation is in 3/4 time. The treble clef staff has a key signature of one flat (B-flat). The bass clef staff has a key signature of one flat (B-flat). The melody is in the treble clef, and the bass line is in the bass clef. The melody consists of eighth and sixteenth notes, with some beamed sixteenth notes. The bass line consists of quarter and eighth notes. The notation is color-coded: red for the melody, blue for the bass line, and orange for the bass line.

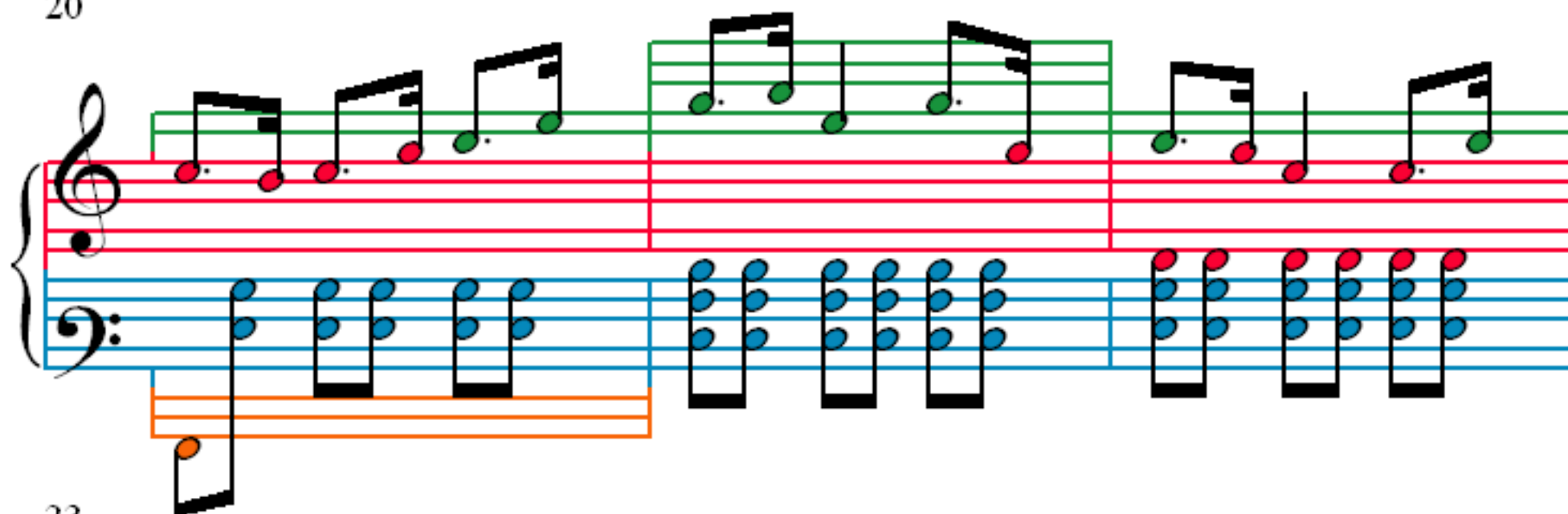
14



17



20



23

