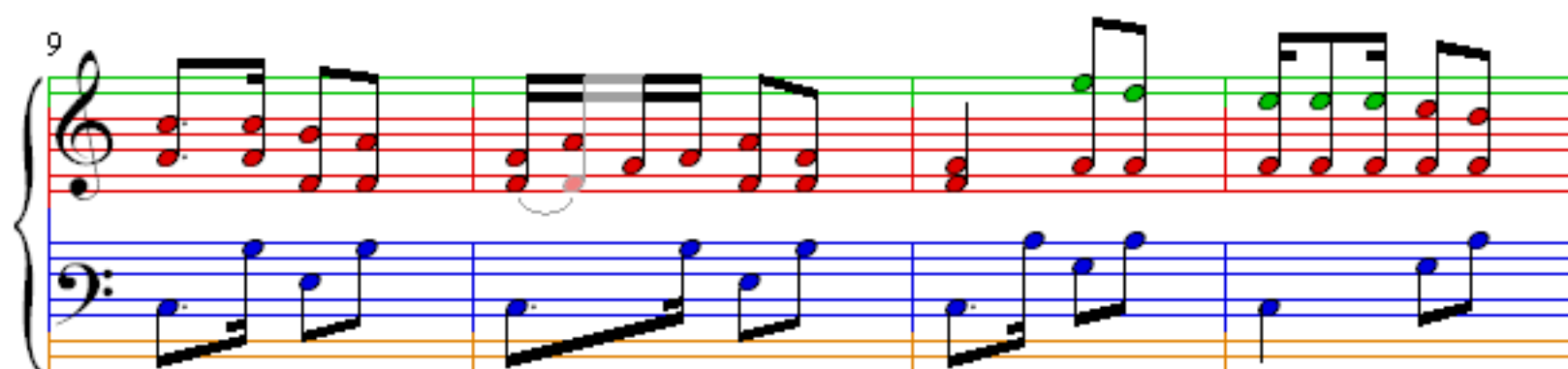
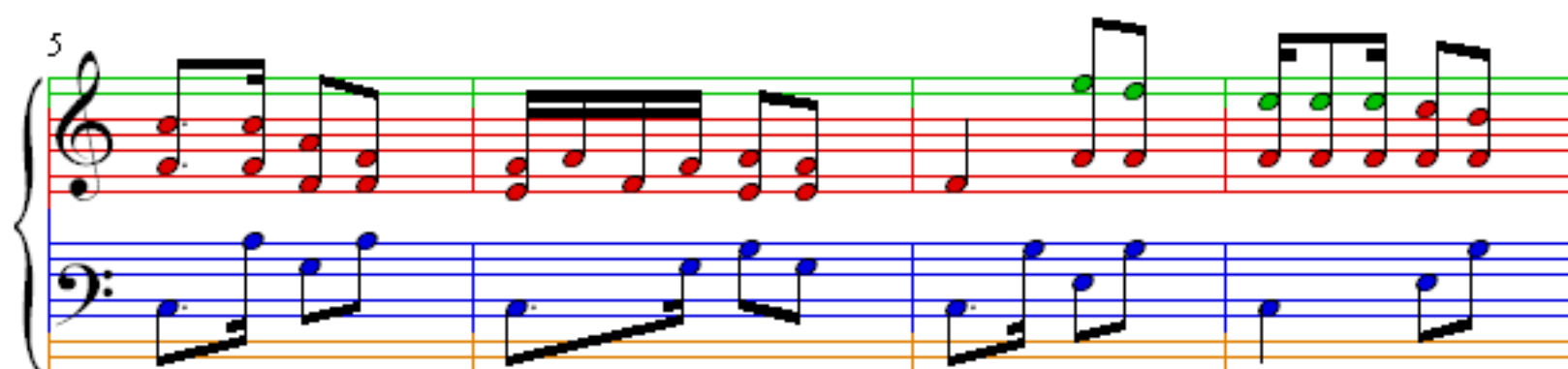


Habanera from Carmen

Georges Bizet

♩ = 80



17

Measures 17-20 of the Habanera from Carmen. The treble clef staff (red lines) features a melody with eighth and sixteenth notes, including a triplet in measure 18. The bass clef staff (blue lines) provides a harmonic accompaniment with eighth and sixteenth notes. The system is divided into four measures.

21

Measures 21-24 of the Habanera from Carmen. The treble clef staff (red lines) continues the melody with eighth and sixteenth notes. The bass clef staff (blue lines) continues the accompaniment. The system is divided into four measures.

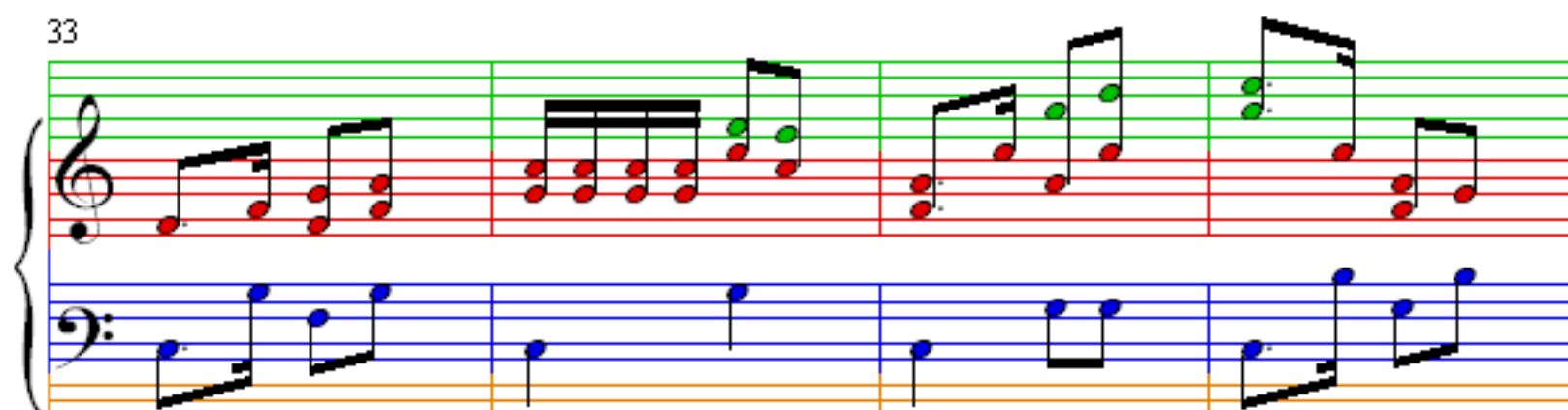
25

Measures 25-28 of the Habanera from Carmen. The treble clef staff (red lines) features a melody with eighth and sixteenth notes. The bass clef staff (blue lines) provides a harmonic accompaniment with eighth and sixteenth notes. The system is divided into four measures.

29

Measures 29-32 of the Habanera from Carmen. The treble clef staff (red lines) continues the melody with eighth and sixteenth notes. The bass clef staff (blue lines) continues the accompaniment. The system is divided into four measures.

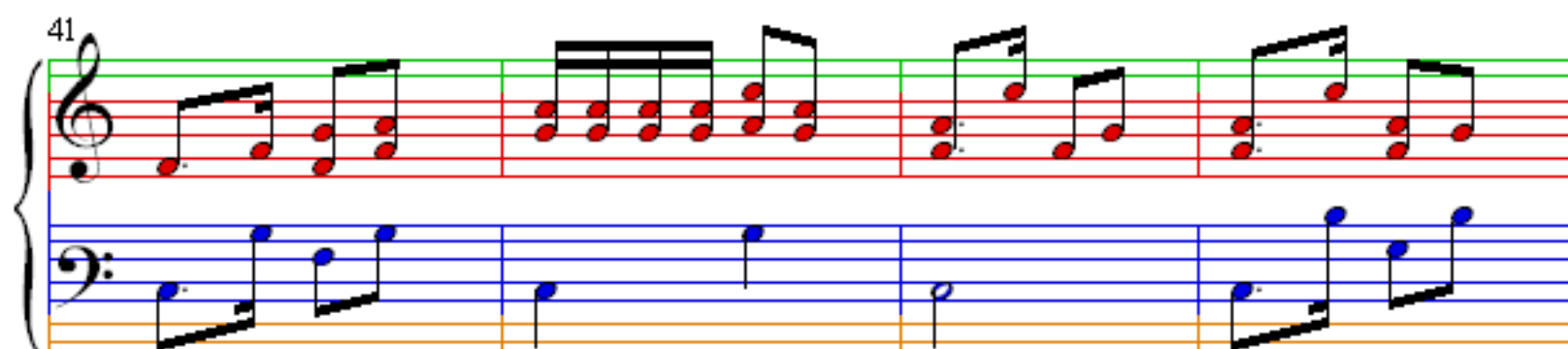
33



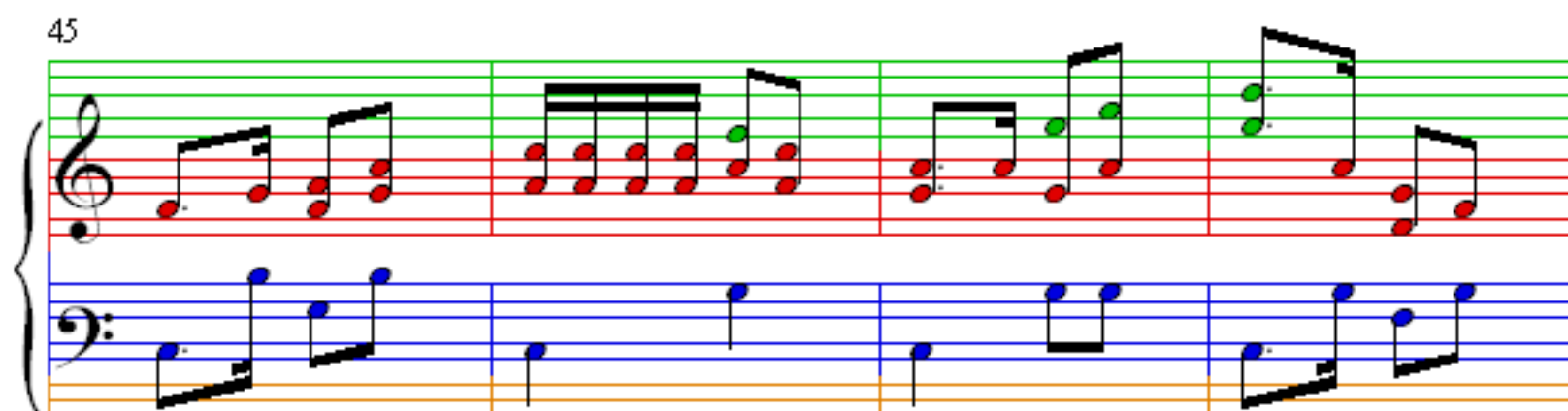
37



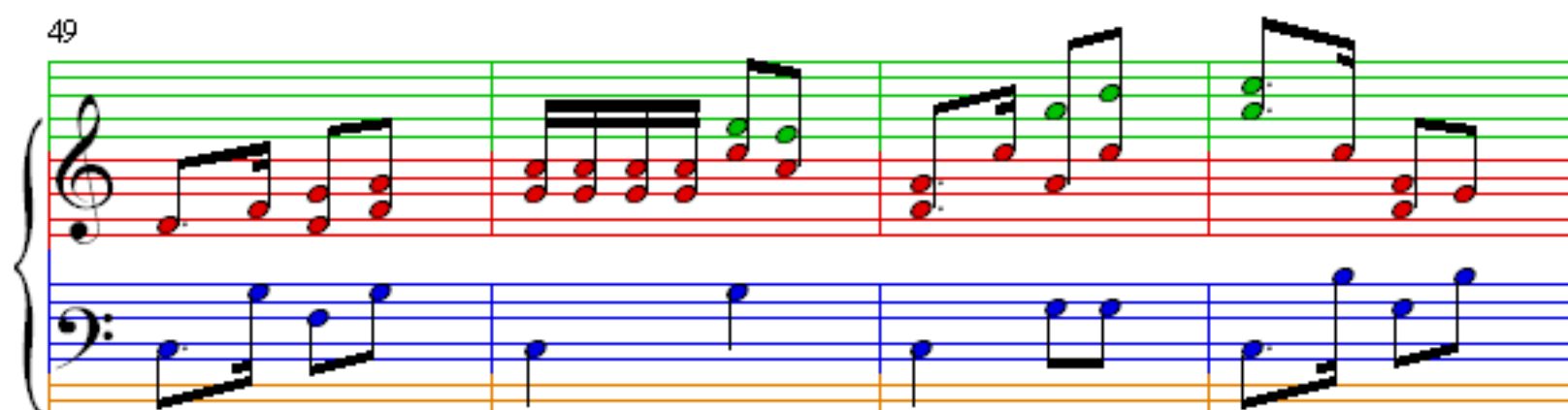
41



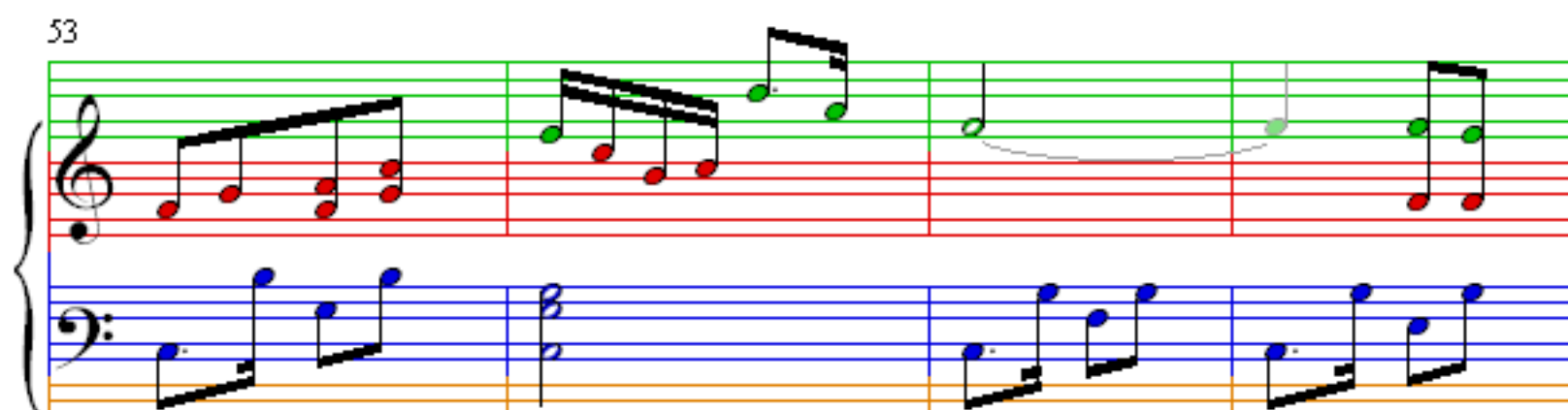
45



49



53



57



61



65

69

73

77

81

Measures 81-84 of the Habanera from Carmen. The score is written for piano in 2/4 time. The treble clef staff (top) features a melody with eighth and sixteenth notes, while the bass clef staff (bottom) provides a harmonic accompaniment with eighth and sixteenth notes. The key signature is one flat (B-flat major or D minor). The measures are grouped by a brace on the left. The first two measures (81-82) show a steady eighth-note accompaniment in the bass and a melody in the treble. Measures 83-84 introduce a more complex rhythmic pattern in the treble, featuring sixteenth-note runs.

85

Measures 85-88 of the Habanera from Carmen. The score continues the melody and accompaniment. Measures 85-86 show a continuation of the eighth-note accompaniment and the treble melody. Measures 87-88 feature a more complex rhythmic pattern in the treble, with sixteenth-note runs and a change in the bass accompaniment.

89

Measures 89-92 of the Habanera from Carmen. The score continues the melody and accompaniment. Measures 89-90 show a continuation of the eighth-note accompaniment and the treble melody. Measures 91-92 feature a more complex rhythmic pattern in the treble, with sixteenth-note runs and a change in the bass accompaniment.

93

Measures 93-96 of the Habanera from Carmen. The score continues the melody and accompaniment. Measures 93-94 show a continuation of the eighth-note accompaniment and the treble melody. Measures 95-96 feature a more complex rhythmic pattern in the treble, with sixteenth-note runs and a change in the bass accompaniment.

97

Measures 97-100 of the Habanera from Carmen. The score is written for piano in 3/4 time. The right hand (treble clef) features a melody with eighth and sixteenth notes, while the left hand (bass clef) provides a steady accompaniment of eighth notes. The music is in G major, with a key signature of one sharp (F#).

101

Measures 101-104 of the Habanera from Carmen. The right hand continues the melodic line with various rhythmic patterns, including a triplet in measure 103. The left hand maintains the eighth-note accompaniment. The key signature remains G major.

105

Measures 105-108 of the Habanera from Carmen. The right hand features a more complex melodic passage with sixteenth notes and a triplet. The left hand continues the eighth-note accompaniment. The key signature remains G major.

109

Measures 109-112 of the Habanera from Carmen. The right hand concludes the melodic phrase with a final flourish. The left hand continues the eighth-note accompaniment. The key signature remains G major.