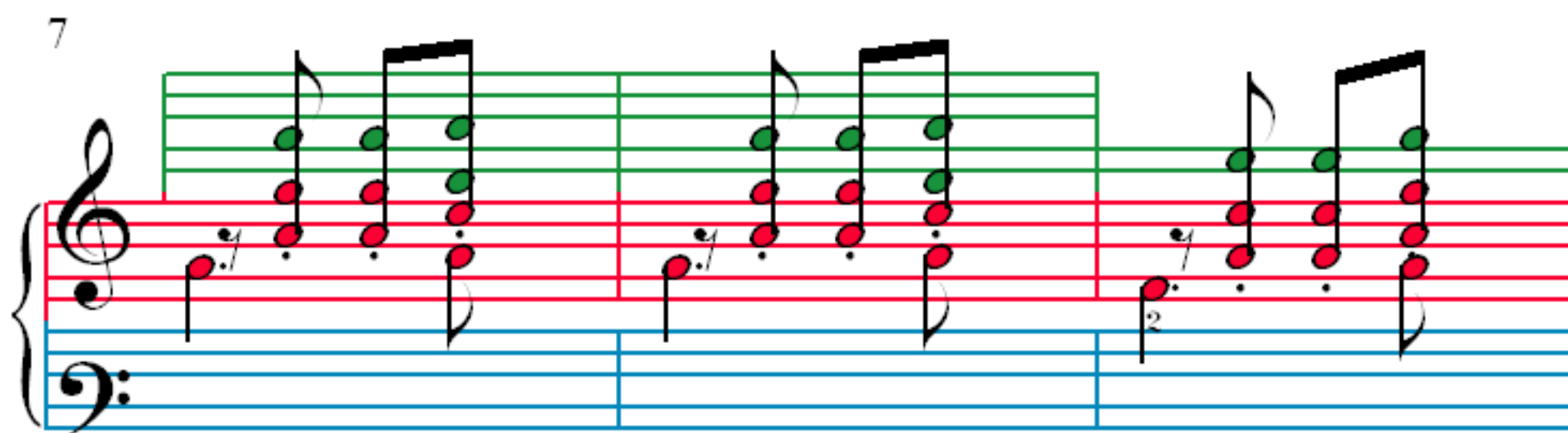
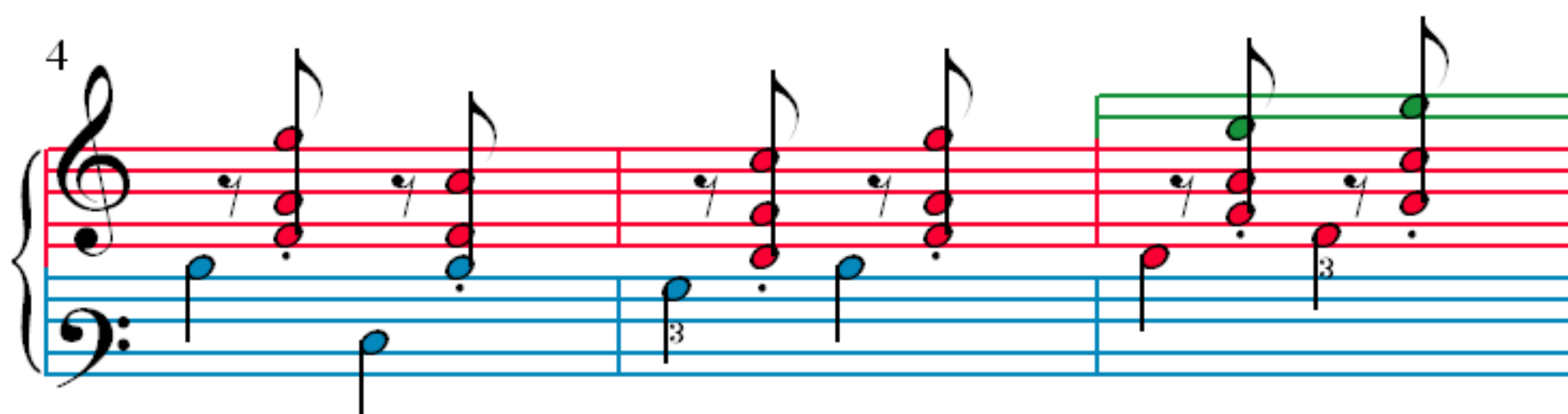
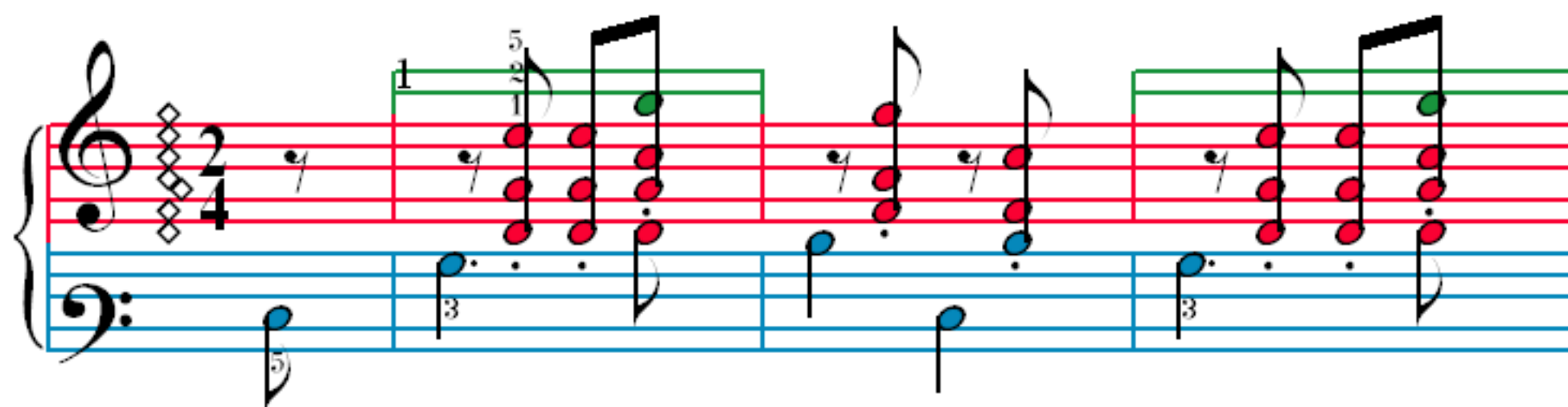


Toccatina Op.27, No.12

Dmitri Kabalevsky



13

Measures 13-15. Treble clef has red and green notes, bass clef has blue notes. Measure 13 has a triplet in the bass. Measure 15 has a green note on the top line.

16

Measures 16-18. Treble clef has red and green notes, bass clef has blue notes. Measure 18 has a triplet in the bass.

19

Measures 19-21. Treble clef has red and green notes, bass clef has blue notes. Measure 21 has a doublet in the bass.

22

Measures 22-24. Treble clef has red and green notes, bass clef has blue notes.

25

Measures 25-27. Treble clef has a green line above the staff. Treble notes are red, bass notes are blue. Measure 25: Treble has a quarter rest, bass has a dotted quarter. Measure 26: Treble has a quarter rest, bass has a dotted quarter. Measure 27: Treble has a quarter rest, bass has a dotted quarter.

28

Measures 28-30. Treble clef has a green line above the staff. Treble notes are red, bass notes are blue. Measure 28: Treble has a quarter rest, bass has a dotted quarter. Measure 29: Treble has a quarter rest, bass has a dotted quarter. Measure 30: Treble has a quarter rest, bass has a dotted quarter.

31

Measures 31-33. Treble clef has a green line above the staff. Treble notes are red, bass notes are blue. Measure 31: Treble has a quarter rest, bass has a dotted quarter. Measure 32: Treble has a quarter rest, bass has a dotted quarter. Measure 33: Treble has a quarter rest, bass has a dotted quarter.

34

Measures 34-36. Treble clef has a green line above the staff. Treble notes are red, bass notes are blue. Measure 34: Treble has a quarter rest, bass has a dotted quarter. Measure 35: Treble has a quarter rest, bass has a dotted quarter. Measure 36: Treble has a quarter rest, bass has a dotted quarter.

37

40

43

46