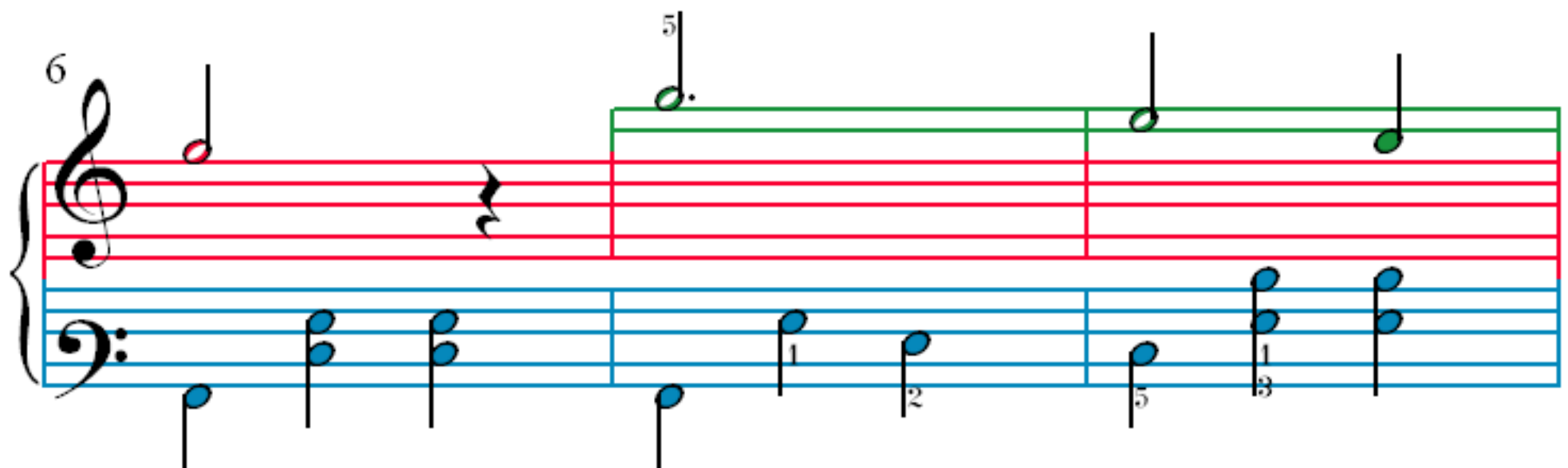
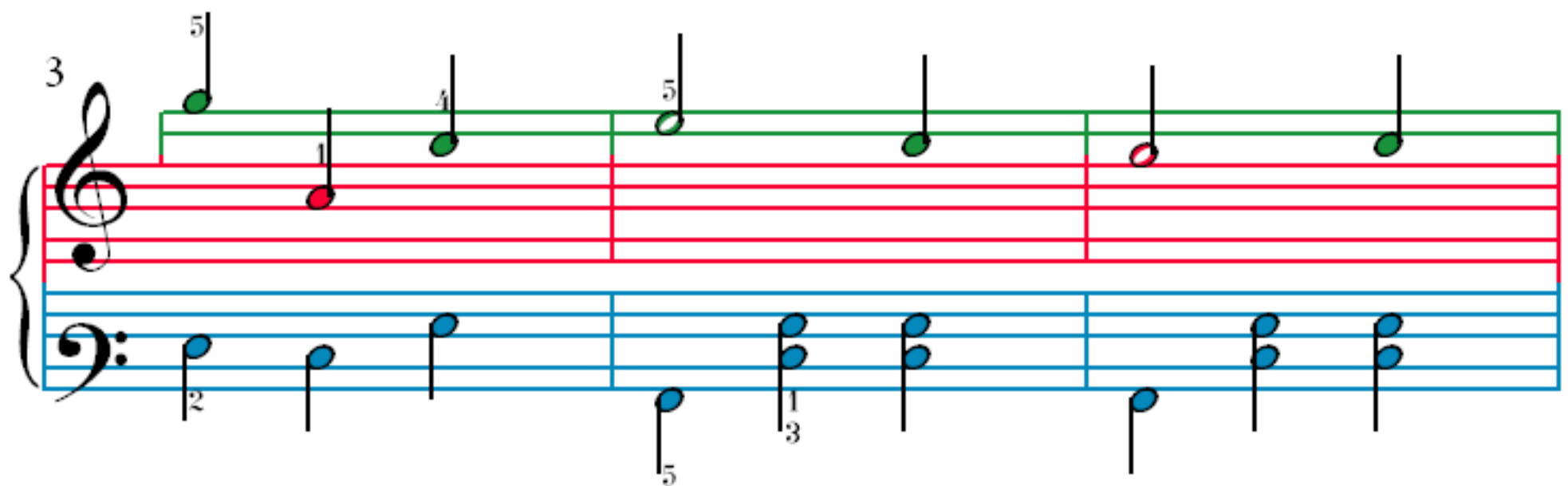
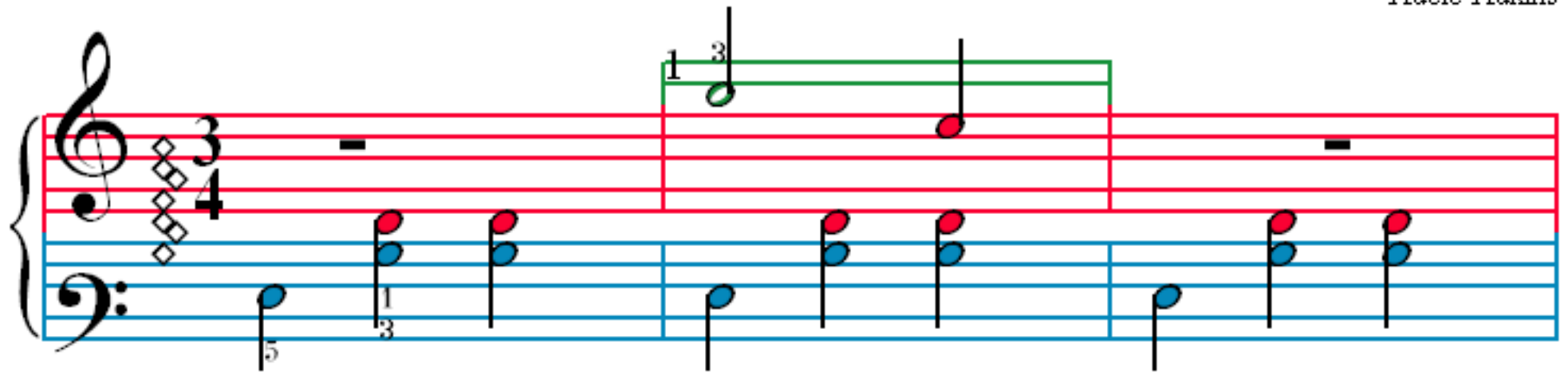


First Love

Adele Adkins



A musical score for the song 'The Rose Tree'. The score is written for a piano, with a treble clef and a bass clef. The key signature is one flat (B-flat), and the time signature is 4/4. The melody is in the treble clef, and the accompaniment is in the bass clef. The score consists of three measures. The first measure has a treble clef with a quarter note G4 and a bass clef with a quarter note F3. The second measure has a treble clef with a quarter note A4 and a bass clef with a quarter note G3. The third measure has a treble clef with a quarter note B4 and a bass clef with a quarter note A3. The lyrics 'The Rose Tree' are written below the bass clef.

15

The image shows a musical score for the song 'The Rose Tree'. It consists of three staves: a green treble staff, a red treble staff, and a blue bass staff. The green staff contains a melody with a dotted quarter note on G4, followed by a triplet of eighth notes on A4, B4, and C5, and then a half note on B4. The red staff contains a melody with a quarter note on G4, followed by a quarter note on A4, and then a half note on B4. The blue staff contains a bass line with a quarter note on G3, followed by a quarter note on A3, and then a half note on B3. The score is divided into three measures by vertical bar lines. The first measure contains the first two notes of each melody. The second measure contains the triplet and the first note of the next measure. The third measure contains the remaining notes of the next measure. The score is labeled with the number '15' in the top left corner.

24

27

30

33

