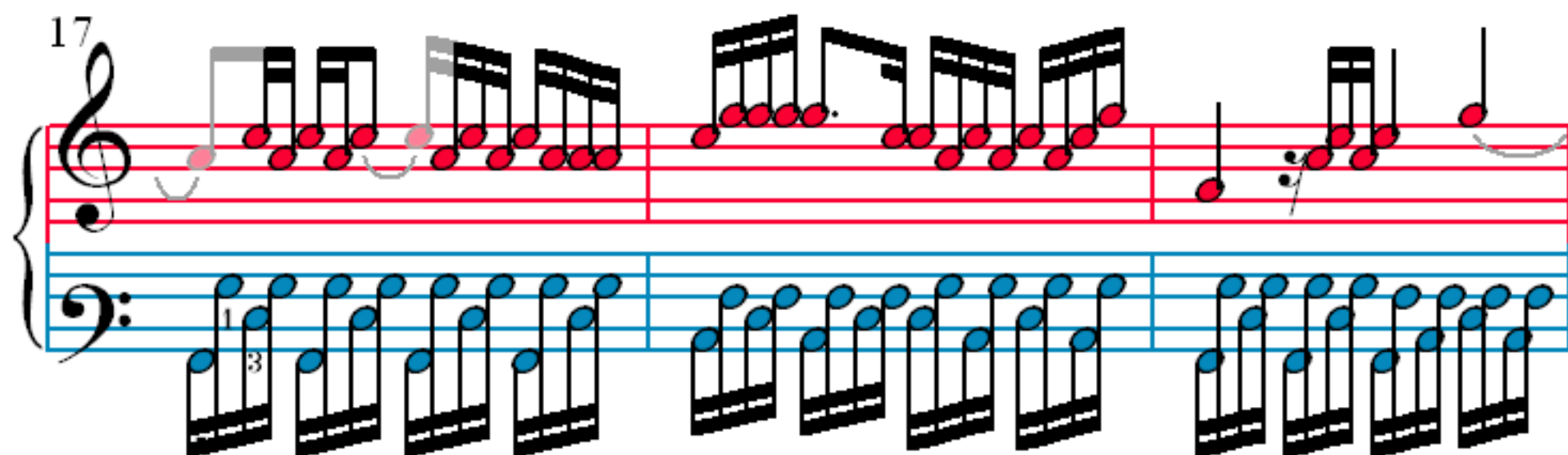
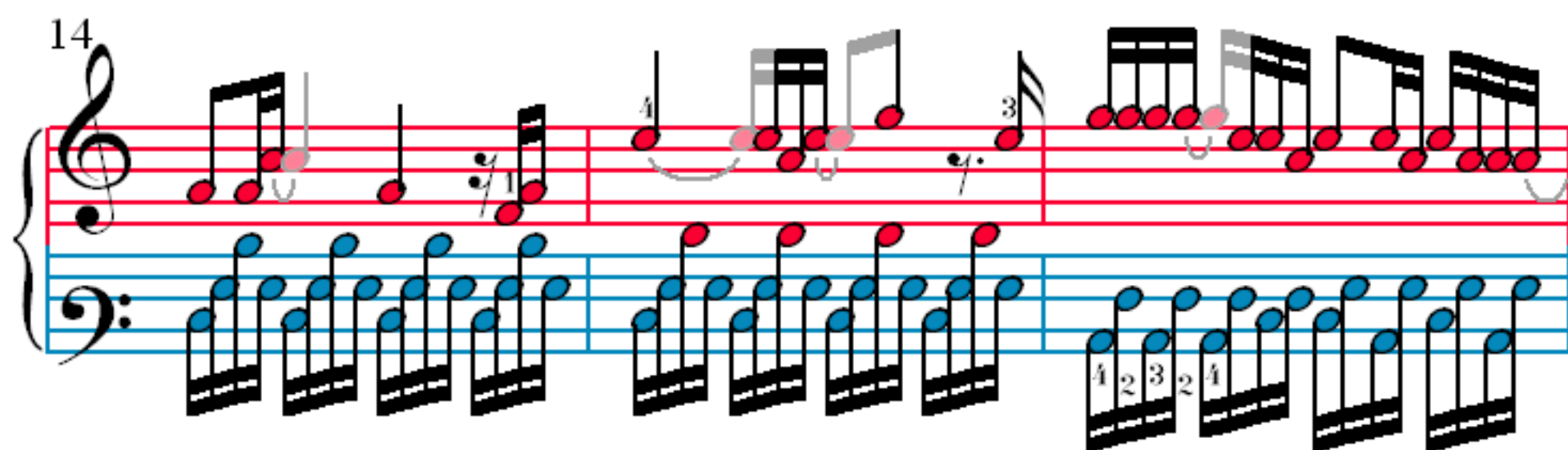
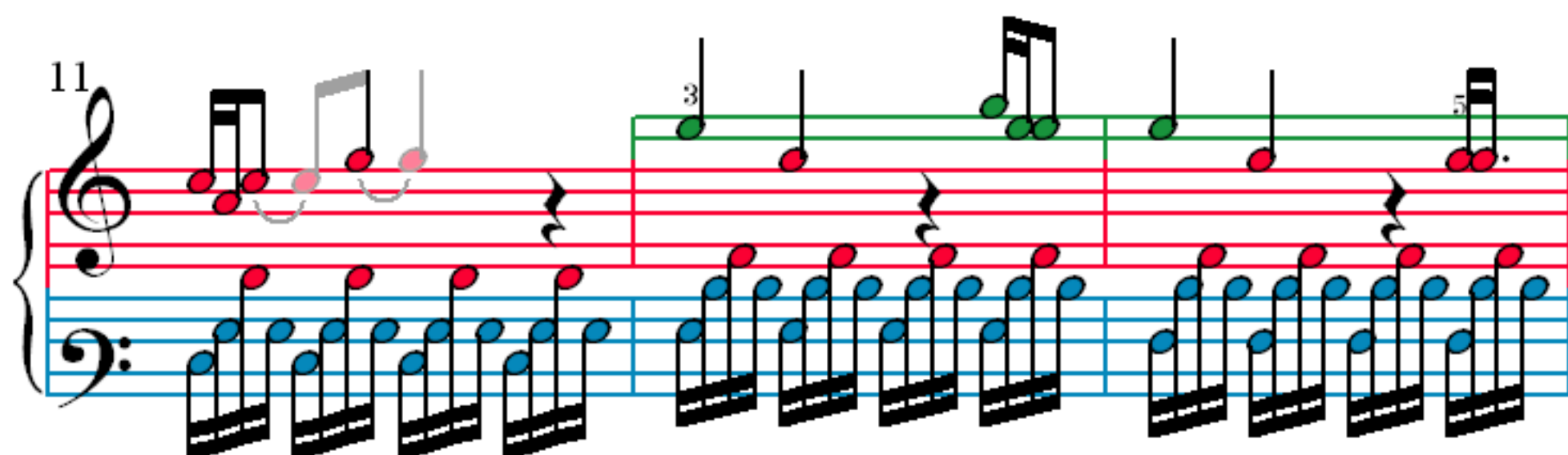
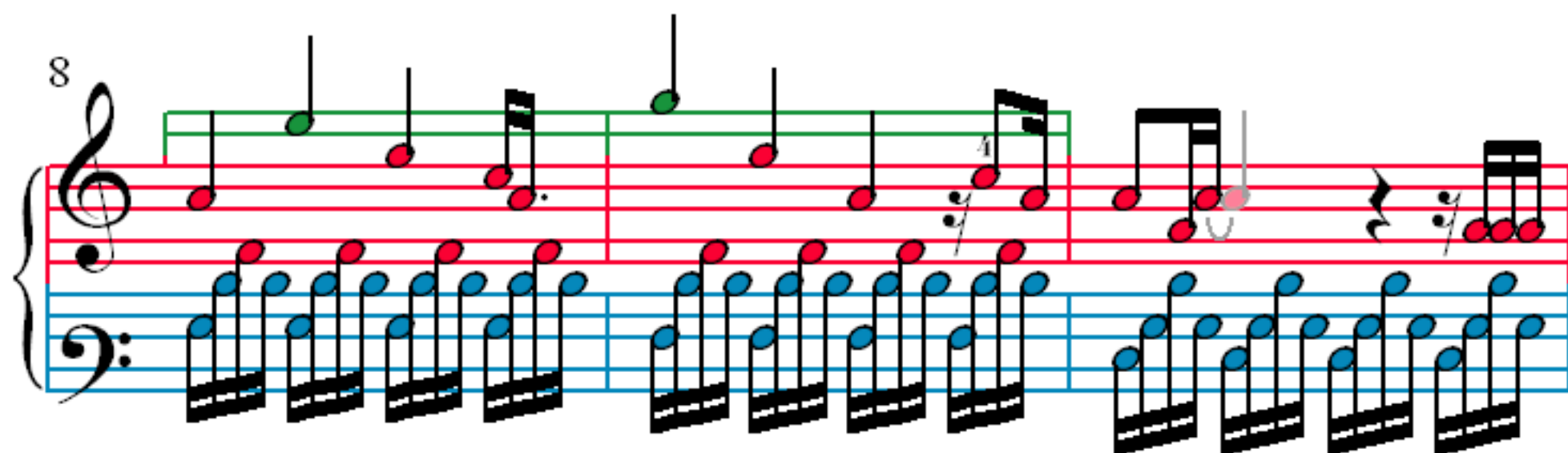


# Someone Like You

Adele Adkins & Daniel Wilson

The image displays the first four systems of the piano accompaniment for the song "Someone Like You". The music is written for piano in 4/4 time, with a key signature of one flat (Bb). The notation is presented on grand staves, with the right hand (treble clef) and left hand (bass clef) parts clearly delineated. The first system (measures 1-2) features a descending eighth-note pattern in the left hand and a whole rest in the right hand. The second system (measures 3-4) continues the left hand pattern, with the right hand entering in measure 4 with a single note. The third system (measures 5-6) shows the right hand playing a series of eighth notes, while the left hand continues its pattern. The fourth system (measures 7-8) concludes the first phrase with a final chord in the right hand and a continuation of the left hand pattern. The notation includes various musical symbols such as clefs, time signatures, key signatures, and note values, all rendered in a clear, legible format.



20

23

26

29