

# Invention 3

J. S. Bach (1685–1750)

$\text{♩} = 80$

1

Measures 1-3 of the first system. The treble clef staff (red lines) contains a series of eighth notes, with a black line above the staff indicating a rapid ascent. The bass clef staff (blue lines) contains a series of eighth notes, with a black line below the staff indicating a rapid descent. The notes are color-coded: red for the first measure, blue for the second, and green for the third.

4

Measures 4-6 of the first system. The treble clef staff (red lines) contains a series of eighth notes, with a black line above the staff indicating a rapid ascent. The bass clef staff (blue lines) contains a series of eighth notes, with a black line below the staff indicating a rapid descent. The notes are color-coded: red for the first measure, blue for the second, and green for the third.

7

Measures 7-9 of the first system. The treble clef staff (red lines) contains a series of eighth notes, with a black line above the staff indicating a rapid ascent. The bass clef staff (blue lines) contains a series of eighth notes, with a black line below the staff indicating a rapid descent. The notes are color-coded: red for the first measure, blue for the second, and green for the third.

10

13

16

19

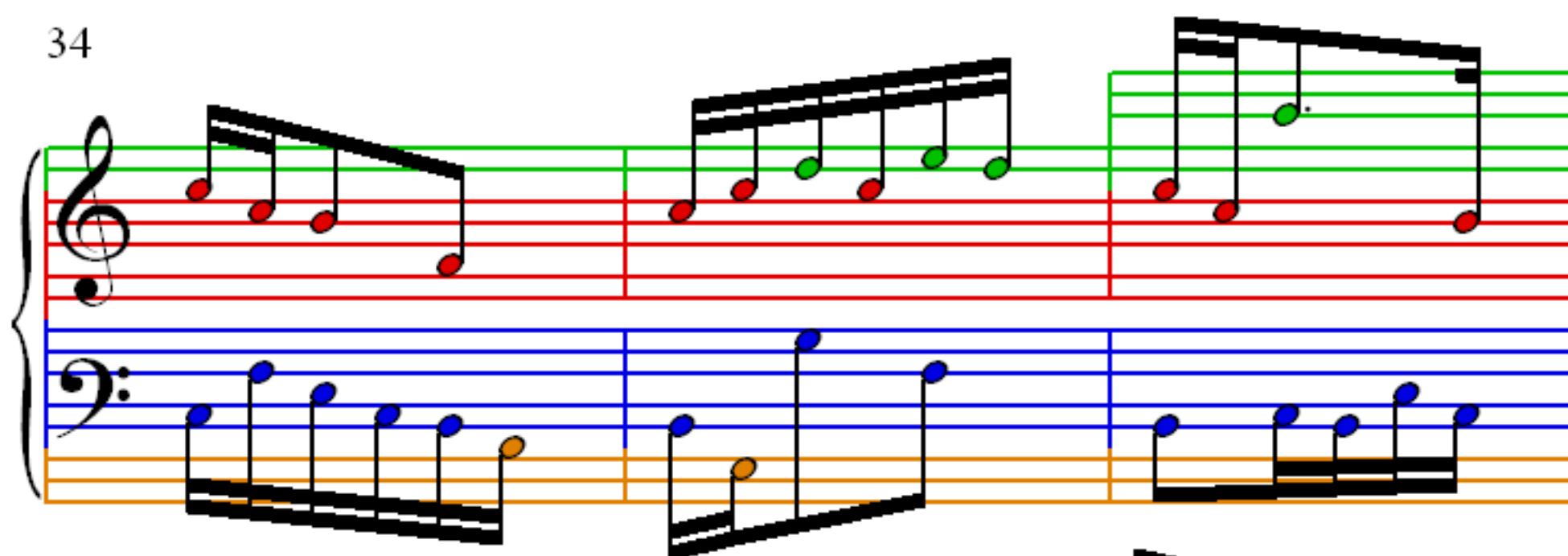
22

25

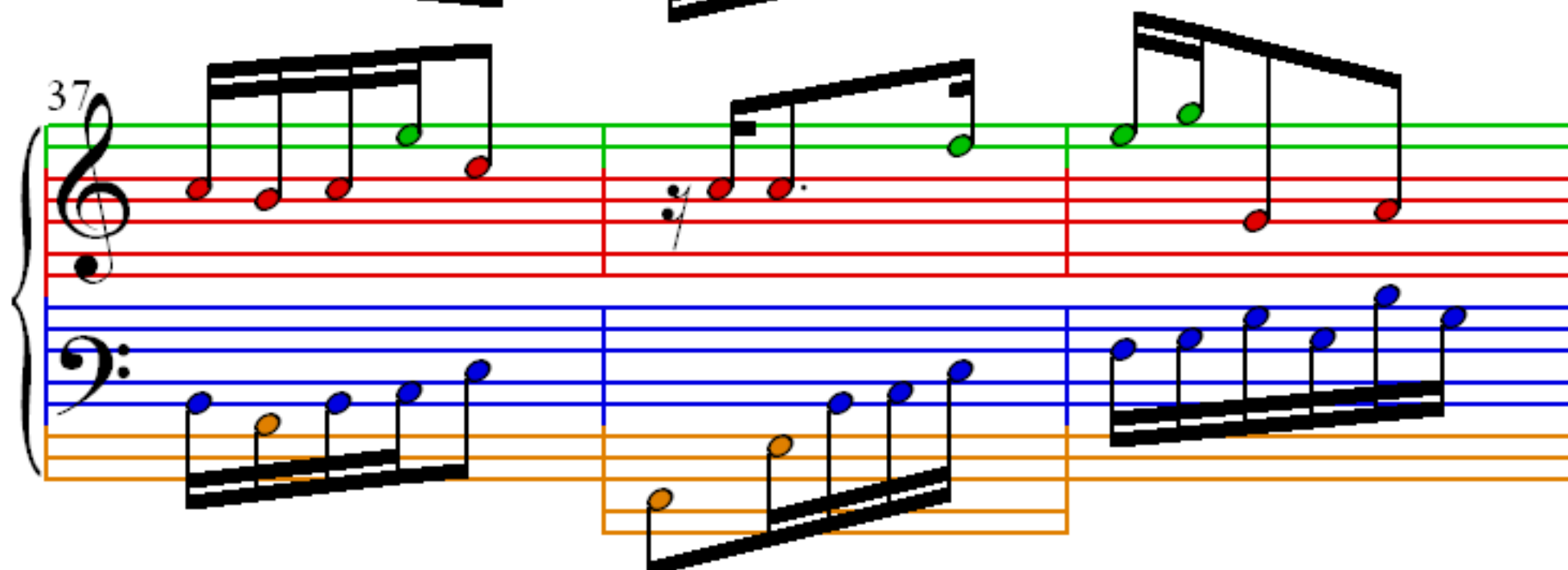
28

31

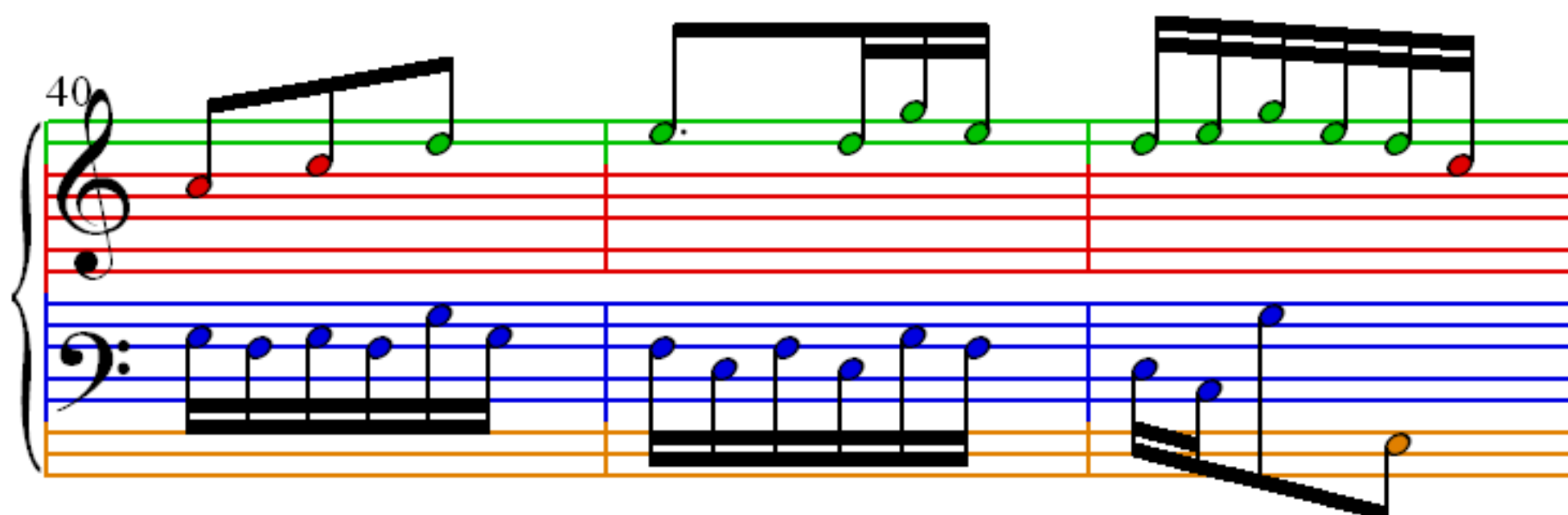
34



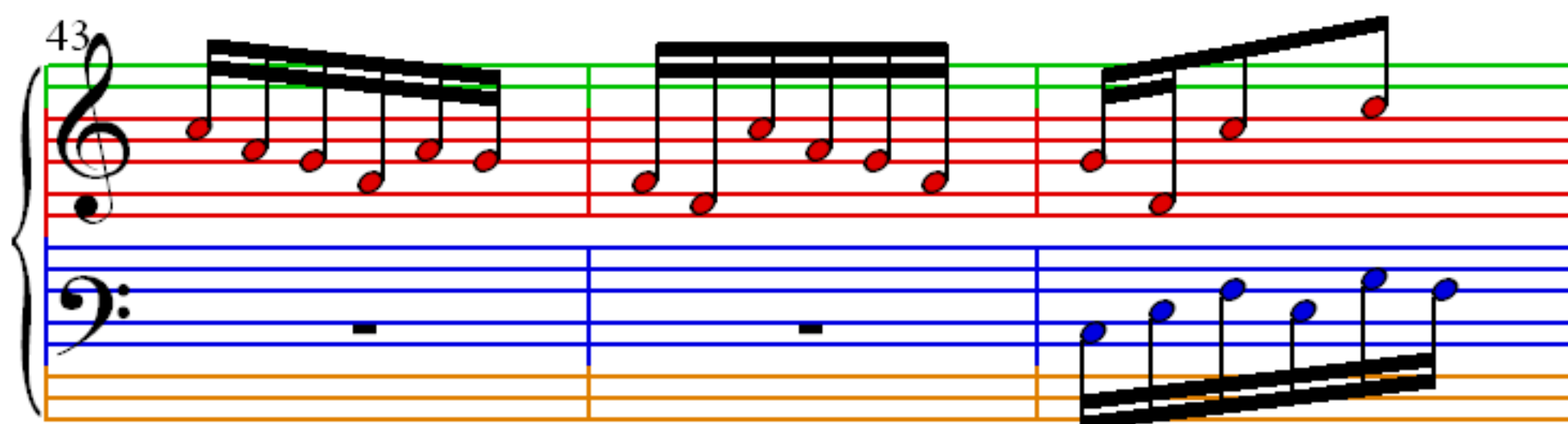
37



40



43



46

49

52

56