

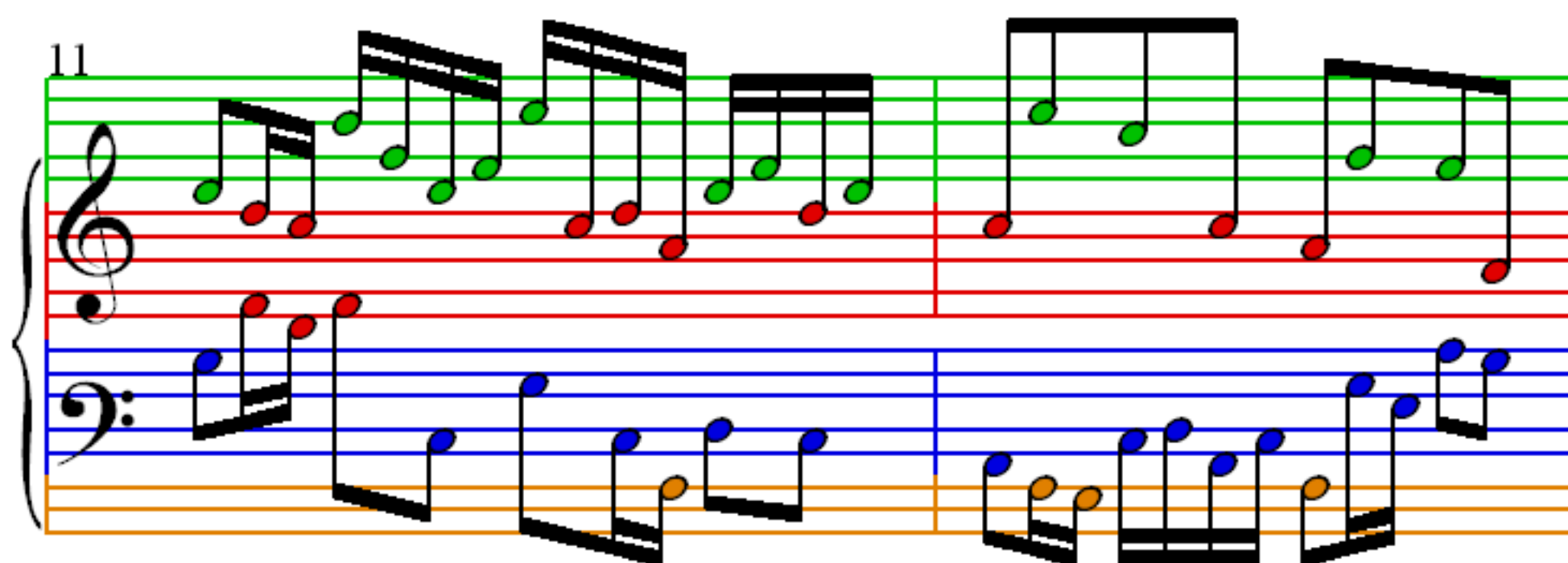
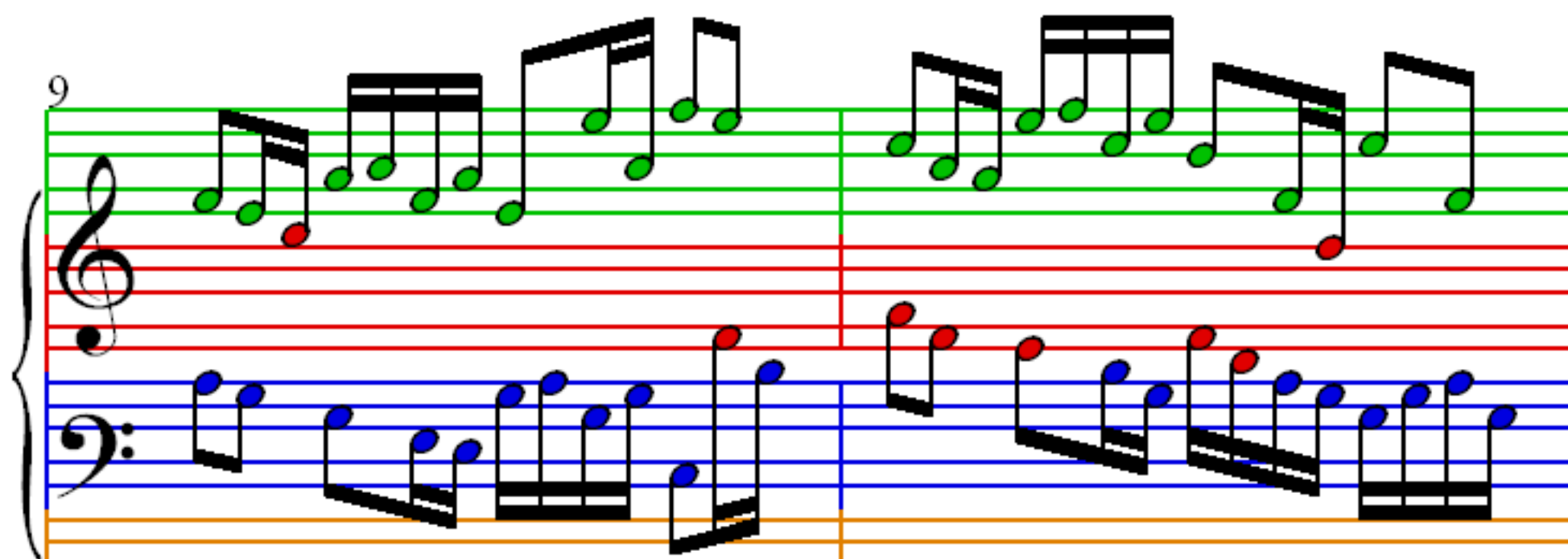
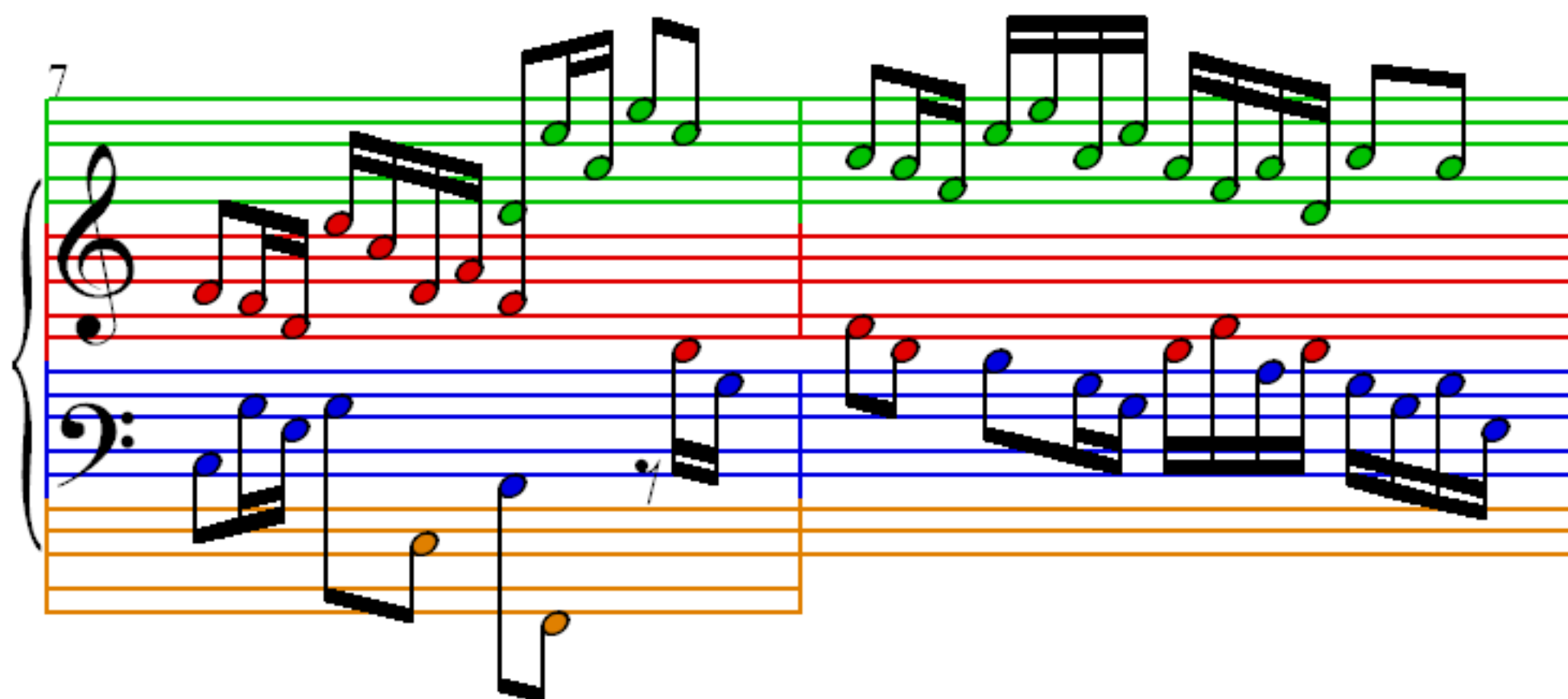
Sinfonia 8

by J. S. Bach (1685–1750) BWV 794

$\text{♩} = 80$

3

5



13

Measures 13 and 14. The treble clef staff contains green notes (measures 13-14) and red notes (measures 13-14). The bass clef staff contains blue notes (measures 13-14) and orange notes (measures 13-14). A third staff, positioned below the bass clef staff, contains orange notes (measures 13-14).

15

Measures 15 and 16. The treble clef staff contains red notes (measures 15-16) and green notes (measures 15-16). The bass clef staff contains blue notes (measures 15-16) and orange notes (measures 15-16). A third staff, positioned below the bass clef staff, contains orange notes (measures 15-16).

17

Measures 17 and 18. The treble clef staff contains green notes (measures 17-18) and red notes (measures 17-18). The bass clef staff contains blue notes (measures 17-18). A third staff, positioned below the bass clef staff, contains orange notes (measures 17-18).

