

Angels

Robbie Williams

$\bullet = 80$

1

Measures 1-3 of the piano introduction. The treble clef staff has a key signature of one flat (B-flat) and a 4/4 time signature. The melody begins with a quarter rest, followed by a dotted half note G4, and then a quarter note A4. The bass clef staff features a steady eighth-note accompaniment. Measure 1: Treble has a quarter rest, bass has a dotted half note G4. Measure 2: Treble has a dotted half note A4, bass has a dotted half note G4. Measure 3: Treble has a quarter note Bb4, bass has a dotted half note F4.

4

Measures 4-6. The melody continues with a quarter note Bb4, followed by a dotted half note A4, and then a quarter note G4. The bass clef staff continues with eighth-note accompaniment. Measure 4: Treble has a quarter note Bb4, bass has a dotted half note F4. Measure 5: Treble has a dotted half note A4, bass has a dotted half note E4. Measure 6: Treble has a quarter note G4, bass has a dotted half note D4.

7

Measures 7-9. The melody continues with a quarter note F4, followed by a dotted half note E4, and then a quarter note D4. The bass clef staff continues with eighth-note accompaniment. Measure 7: Treble has a quarter note F4, bass has a dotted half note C4. Measure 8: Treble has a dotted half note E4, bass has a dotted half note B3. Measure 9: Treble has a quarter note D4, bass has a dotted half note A3.

10

Measures 10-12. The melody continues with a quarter note C4, followed by a dotted half note B3, and then a quarter note A3. The bass clef staff continues with eighth-note accompaniment. Measure 10: Treble has a quarter note C4, bass has a dotted half note G3. Measure 11: Treble has a dotted half note B3, bass has a dotted half note F3. Measure 12: Treble has a quarter note A3, bass has a dotted half note E3.

13

16

19

22

25

Measures 25-27. Treble clef: Measure 25 has a quarter rest, followed by eighth and sixteenth notes with ties. Measure 26 continues the melodic line. Measure 27 has a quarter rest followed by eighth and sixteenth notes. Bass clef: Steady eighth-note accompaniment. A third line is present but empty.

28

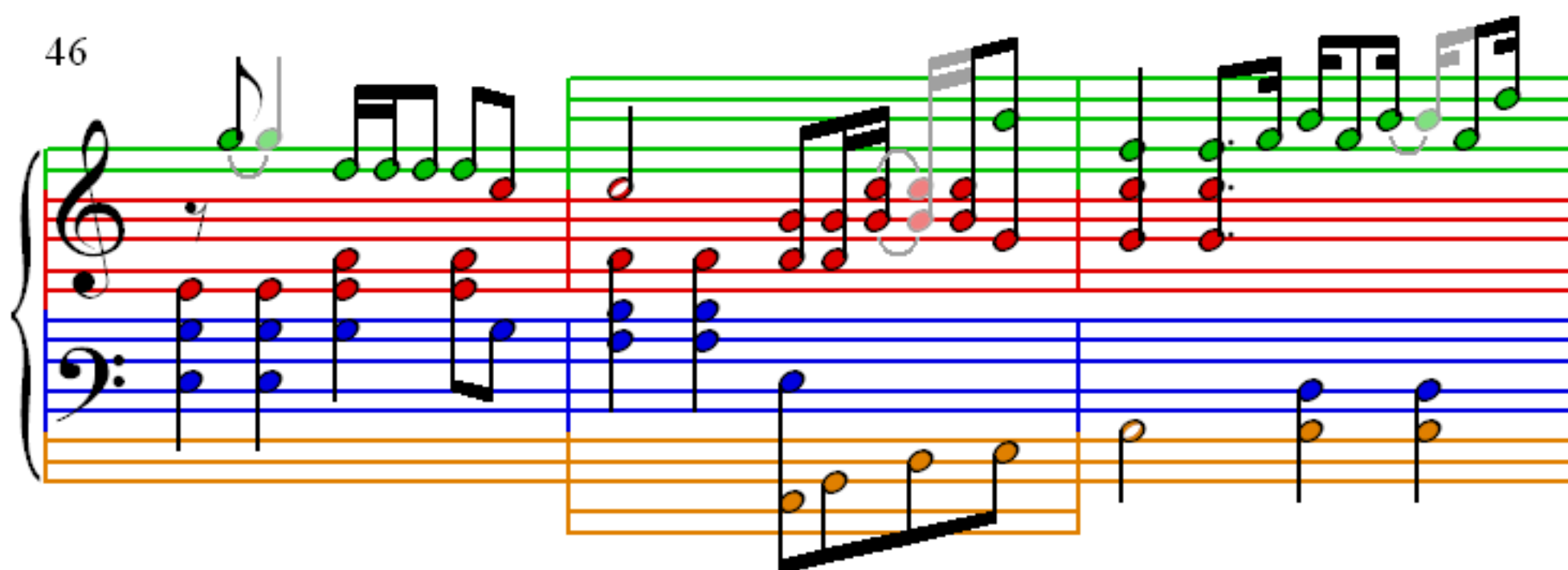
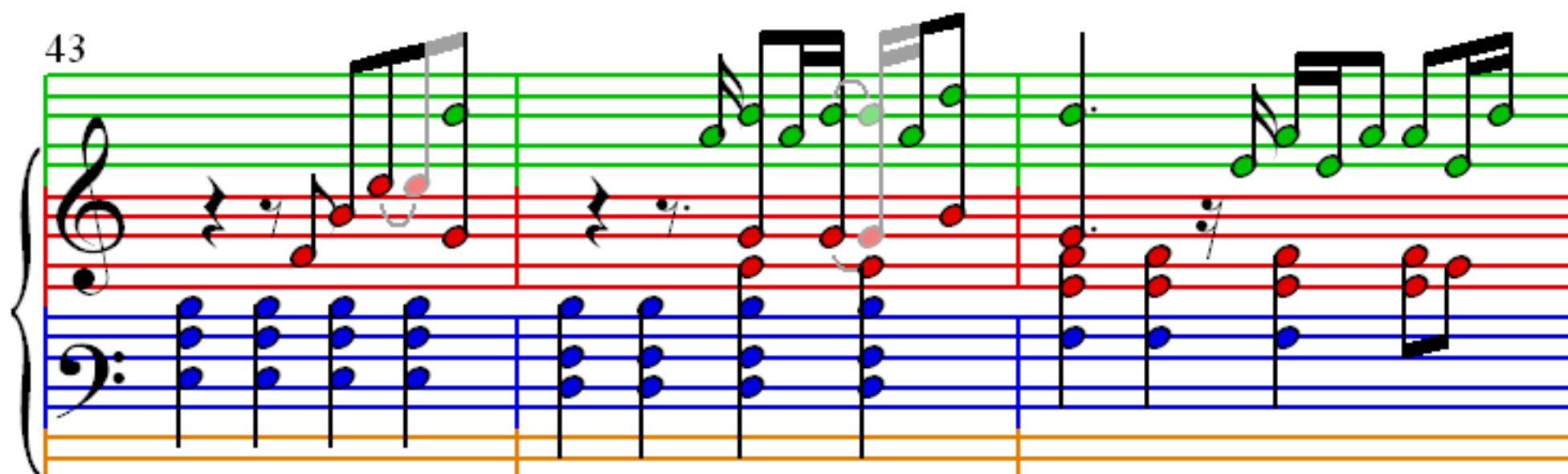
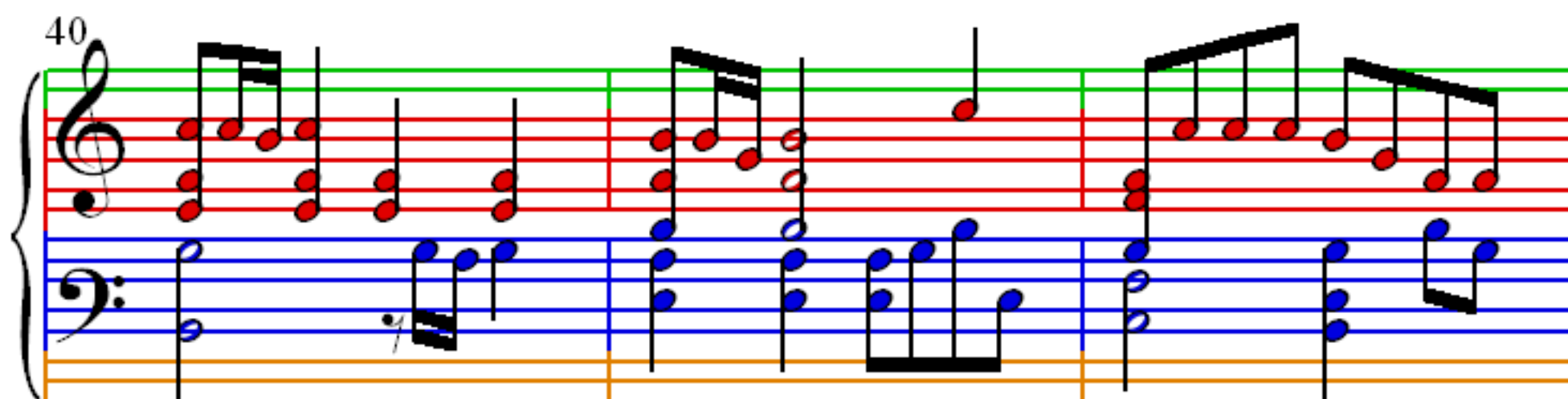
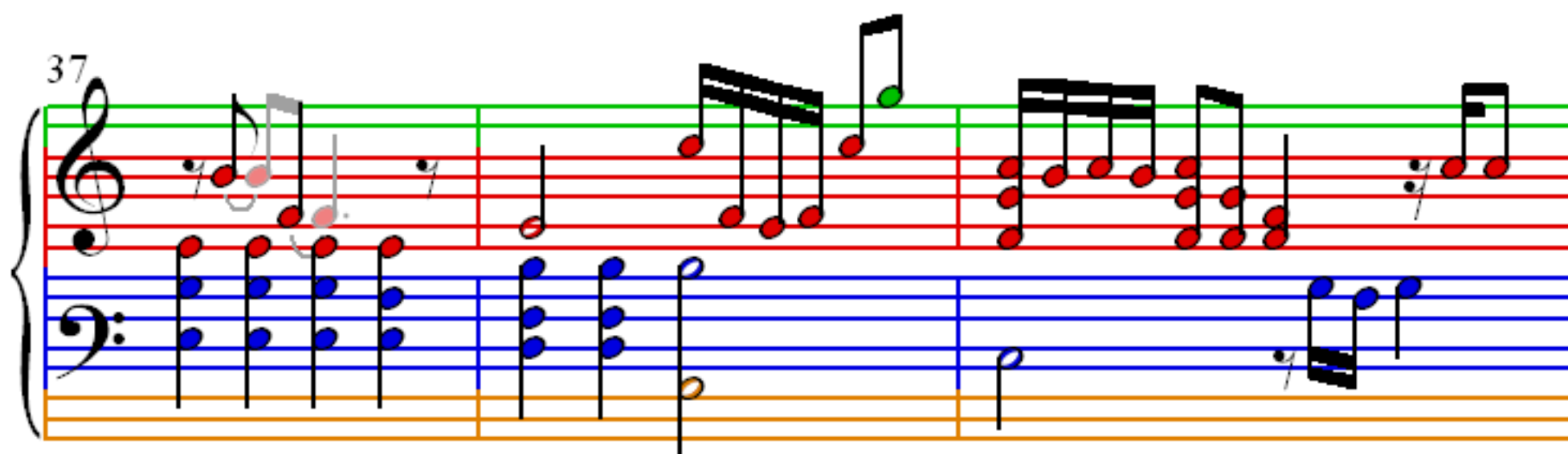
Measures 28-30. Treble clef: Measure 28 has eighth notes and a whole note. Measure 29 has eighth notes. Measure 30 has a whole note. Bass clef: Measure 28 has eighth notes. Measure 29 has eighth notes. Measure 30 has a whole note. A third line is present but empty.

31

Measures 31-33. Treble clef: Measure 31 has eighth notes and a whole note. Measure 32 has eighth notes and a whole note. Measure 33 has eighth notes and a whole note. Bass clef: Steady eighth-note accompaniment. A third line is present but empty.

34

Measures 34-36. Treble clef: Measure 34 has eighth notes and a whole note. Measure 35 has eighth notes and a whole note. Measure 36 has eighth notes and a whole note. Bass clef: Steady eighth-note accompaniment. A third line is present but empty.



49

52

55

58

Measures 58-60. Treble clef: Green notes (e.g., G4, A4, B4, C5) and red notes (e.g., F4, E4, D4). Grey slurs connect some notes. Bass clef: Blue notes (e.g., C3, D3, E3, F3). A third staff with orange notes (e.g., C2, D2, E2, F2) is at the bottom.

61

Measures 61-63. Treble clef: Green notes (e.g., G4, A4, B4, C5) and red notes (e.g., F4, E4, D4). Grey slurs connect some notes. Bass clef: Blue notes (e.g., C3, D3, E3, F3). A third staff with orange notes (e.g., C2, D2, E2, F2) is at the bottom.

64

Measures 64-66. Treble clef: Green notes (e.g., G4, A4, B4, C5) and red notes (e.g., F4, E4, D4). Grey slurs connect some notes. Bass clef: Blue notes (e.g., C3, D3, E3, F3). A third staff with orange notes (e.g., C2, D2, E2, F2) is at the bottom.

67

Measures 67-69. Treble clef: Green notes (e.g., G4, A4, B4, C5) and red notes (e.g., F4, E4, D4). Grey slurs connect some notes. Bass clef: Blue notes (e.g., C3, D3, E3, F3). A third staff with orange notes (e.g., C2, D2, E2, F2) is at the bottom.

70

Measures 70-72. Treble clef: Measure 70 has a green quarter note G4, a red quarter note A4, a green quarter note B4, and a red quarter note C5. Measure 71 has a green quarter note D5, a red quarter note E5, a green quarter note F5, and a red quarter note G5. Measure 72 has a green quarter note A5, a red quarter note B5, a green quarter note C6, and a red quarter note D6. Bass clef: Measure 70 has a blue quarter note C3, a blue quarter note D3, a blue quarter note E3, and a blue quarter note F3. Measure 71 has a blue quarter note G3, a blue quarter note A3, a blue quarter note B3, and a blue quarter note C4. Measure 72 has a blue quarter note D4, a blue quarter note E4, a blue quarter note F4, and a blue quarter note G4. Orange notes are present in the bass clef in measures 70 and 71.

73

Measures 73-75. Treble clef: Measure 73 has a green quarter note G4, a red quarter note A4, a green quarter note B4, and a red quarter note C5. Measure 74 has a green quarter note D5, a red quarter note E5, a green quarter note F5, and a red quarter note G5. Measure 75 has a green quarter note A5, a red quarter note B5, a green quarter note C6, and a red quarter note D6. Bass clef: Measure 73 has a blue quarter note C3, a blue quarter note D3, a blue quarter note E3, and a blue quarter note F3. Measure 74 has a blue quarter note G3, a blue quarter note A3, a blue quarter note B3, and a blue quarter note C4. Measure 75 has a blue quarter note D4, a blue quarter note E4, a blue quarter note F4, and a blue quarter note G4. Orange notes are present in the bass clef in measures 73 and 74.

76

Measures 76-78. Treble clef: Measure 76 has a green quarter note G4, a red quarter note A4, a green quarter note B4, and a red quarter note C5. Measure 77 has a green quarter note D5, a red quarter note E5, a green quarter note F5, and a red quarter note G5. Measure 78 has a green quarter note A5, a red quarter note B5, a green quarter note C6, and a red quarter note D6. Bass clef: Measure 76 has a blue quarter note C3, a blue quarter note D3, a blue quarter note E3, and a blue quarter note F3. Measure 77 has a blue quarter note G3, a blue quarter note A3, a blue quarter note B3, and a blue quarter note C4. Measure 78 has a blue quarter note D4, a blue quarter note E4, a blue quarter note F4, and a blue quarter note G4. Orange notes are present in the bass clef in measures 76 and 77.

79

Measures 79-80. Treble clef: Measure 79 has a red quarter note G4, a red quarter note A4, a red quarter note B4, and a red quarter note C5. Measure 80 has a red quarter note D5, a red quarter note E5, a red quarter note F5, and a red quarter note G5. Bass clef: Measure 79 has a blue quarter note C3, a blue quarter note D3, a blue quarter note E3, and a blue quarter note F3. Measure 80 has a blue quarter note G3, a blue quarter note A3, a blue quarter note B3, and a blue quarter note C4.