

Candle In The Wind

Elton John

$\text{♩} = 110$

The image displays the first eight measures of the piano introduction for 'Candle In The Wind' by Elton John. The score is written for piano in 4/4 time, with a tempo of 110 beats per minute. It features a grand staff with a treble and bass clef. The key signature has one flat (B-flat). The notation includes various musical symbols such as notes, rests, and beams. Some notes are highlighted with colored circles (green, red, blue, orange) to indicate specific intervals or chords. The score is divided into four systems, each containing two staves. The first system starts with a treble clef and a 4/4 time signature. The second system begins with a measure rest in the treble staff. The third system also begins with a measure rest in the treble staff. The fourth system begins with a measure rest in the treble staff. The bass staff contains a continuous line of notes, often with beams, providing a harmonic foundation for the melody in the treble staff.

10

13

16

19

22

Measures 22-23. Treble clef: Measure 22 has two chords of four notes (red, pink, red, pink) with grey boxes around them. Measure 23 has a similar chord with a green note on top. Bass clef: Measure 22 has a single note. Measure 23 has a four-note ascending sequence.

24

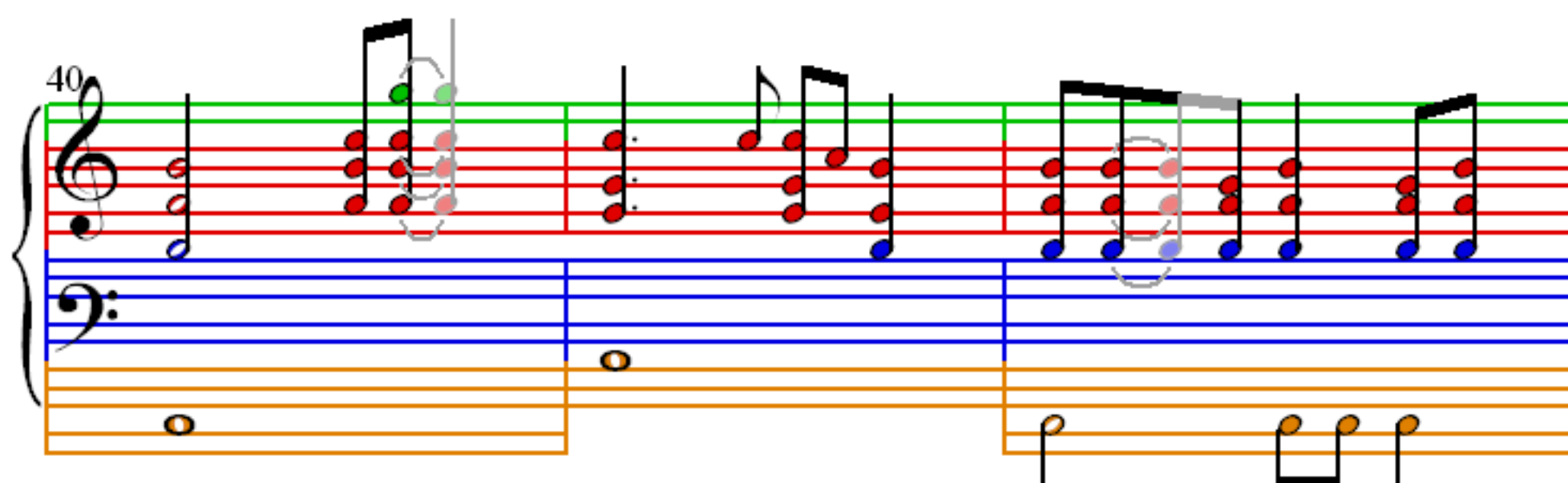
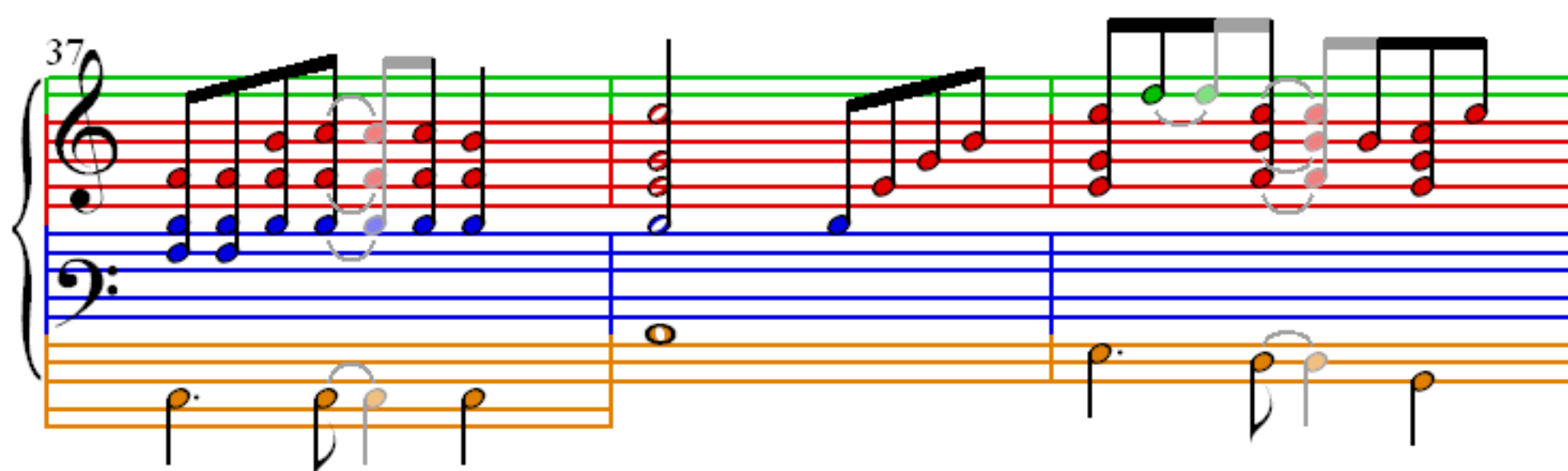
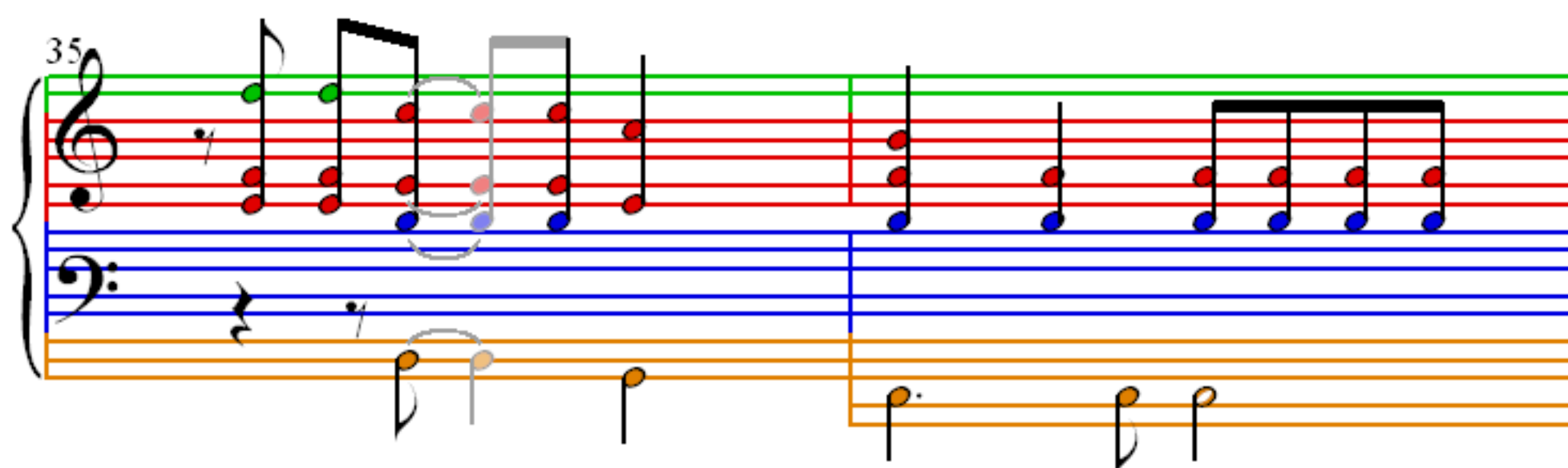
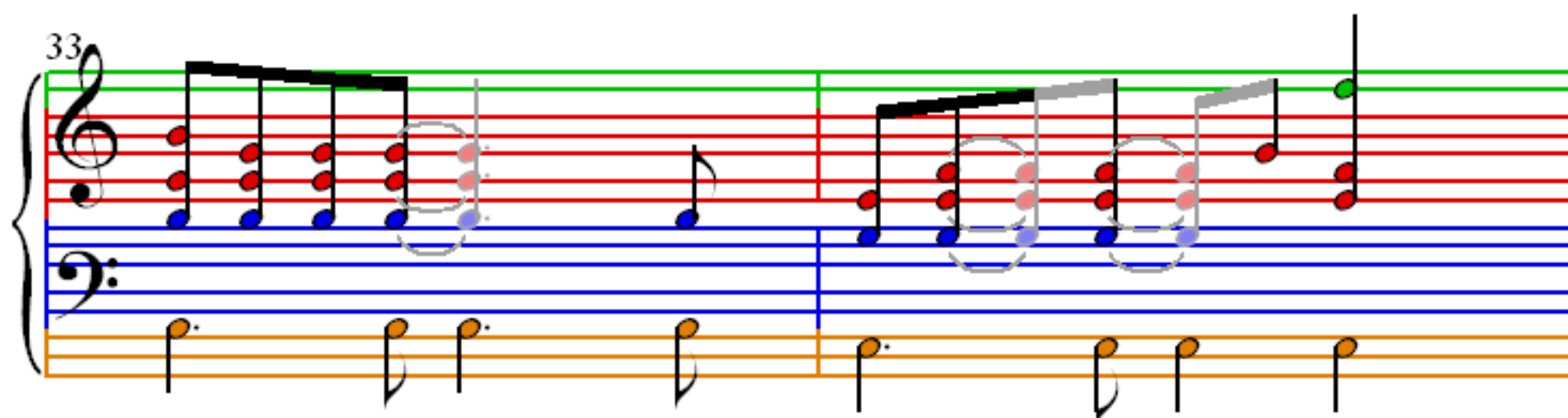
Measures 24-26. Treble clef: Measure 24 has a single note and a chord. Measure 25 has a chord with a grey box. Measure 26 has a chord with a grey box. Bass clef: Measure 24 has a single note. Measure 25 has a four-note ascending sequence. Measure 26 has a single note and a four-note ascending sequence.

27

Measures 27-29. Treble clef: Measure 27 has a chord with a grey box. Measure 28 has a single note and a chord. Measure 29 has a chord with a grey box. Bass clef: Measure 27 has a four-note ascending sequence. Measure 28 has a single note and a four-note ascending sequence. Measure 29 has a single note.

30

Measures 30-32. Treble clef: Measure 30 has a chord with a grey box. Measure 31 has a single note and a chord. Measure 32 has a chord with a grey box. Bass clef: Measure 30 has a four-note ascending sequence. Measure 31 has a single note and a four-note ascending sequence. Measure 32 has a single note and a four-note ascending sequence.



43

45

48

51

54

Measures 54-56. Treble clef: Measure 54 has a C4-E4-G4 triad and a D4 quarter note. Measure 55 has a C4-E4-G4 triad and a D4 quarter note. Measure 56 has a C4-E4-G4 triad and a D4 quarter note. Bass clef: Measure 54 has a C3 quarter note. Measure 55 has a D3 quarter note. Measure 56 has a E3 quarter note. Third staff: Measure 54 has a C3 quarter note. Measure 55 has a D3 quarter note. Measure 56 has a E3 quarter note.

57

Measures 57-59. Treble clef: Measure 57 has a C4-E4-G4 triad and a D4 quarter note. Measure 58 has a C4-E4-G4 triad and a D4 quarter note. Measure 59 has a C4-E4-G4 triad and a D4 quarter note. Bass clef: Measure 57 has a C3 quarter note. Measure 58 has a D3 quarter note. Measure 59 has a E3 quarter note. Third staff: Measure 57 has a C3 quarter note. Measure 58 has a D3 quarter note. Measure 59 has a E3 quarter note.

60

Measures 60-62. Treble clef: Measure 60 has a C4-E4-G4 triad and a D4 quarter note. Measure 61 has a C4-E4-G4 triad and a D4 quarter note. Measure 62 has a C4-E4-G4 triad and a D4 quarter note. Bass clef: Measure 60 has a C3 quarter note. Measure 61 has a D3 quarter note. Measure 62 has a E3 quarter note. Third staff: Measure 60 has a C3 quarter note. Measure 61 has a D3 quarter note. Measure 62 has a E3 quarter note.

63

Measures 63-65. Treble clef: Measure 63 has a C4-E4-G4 triad and a D4 quarter note. Measure 64 has a C4-E4-G4 triad and a D4 quarter note. Measure 65 has a C4-E4-G4 triad and a D4 quarter note. Bass clef: Measure 63 has a C3 quarter note. Measure 64 has a D3 quarter note. Measure 65 has a E3 quarter note. Third staff: Measure 63 has a C3 quarter note. Measure 64 has a D3 quarter note. Measure 65 has a E3 quarter note.

66

Measures 66-68. Treble clef: Measure 66 has a complex chord with green and red dots. Measure 67 has a complex chord with green and red dots. Measure 68 has a complex chord with green and red dots. Bass clef: Measure 66 has a simple line of notes with orange and blue dots. Measure 67 has a simple line of notes with orange and blue dots. Measure 68 has a simple line of notes with orange and blue dots.

69

Measures 69-71. Treble clef: Measure 69 has a complex chord with red and blue dots. Measure 70 has a complex chord with red and blue dots. Measure 71 has a complex chord with red and blue dots. Bass clef: Measure 69 has a simple line of notes with orange and blue dots. Measure 70 has a simple line of notes with orange and blue dots. Measure 71 has a simple line of notes with orange and blue dots.

72

Measures 72-74. Treble clef: Measure 72 has a complex chord with red and blue dots. Measure 73 has a complex chord with red and blue dots. Measure 74 has a complex chord with red and blue dots. Bass clef: Measure 72 has a simple line of notes with orange and blue dots. Measure 73 has a simple line of notes with orange and blue dots. Measure 74 has a simple line of notes with orange and blue dots.

75

Measures 75-77. Treble clef: Measure 75 has a complex chord with red and blue dots. Measure 76 has a complex chord with red and blue dots. Measure 77 has a complex chord with red and blue dots. Bass clef: Measure 75 has a simple line of notes with orange and blue dots. Measure 76 has a simple line of notes with orange and blue dots. Measure 77 has a simple line of notes with orange and blue dots.