

Five Finger Exercise 1, B Major

1

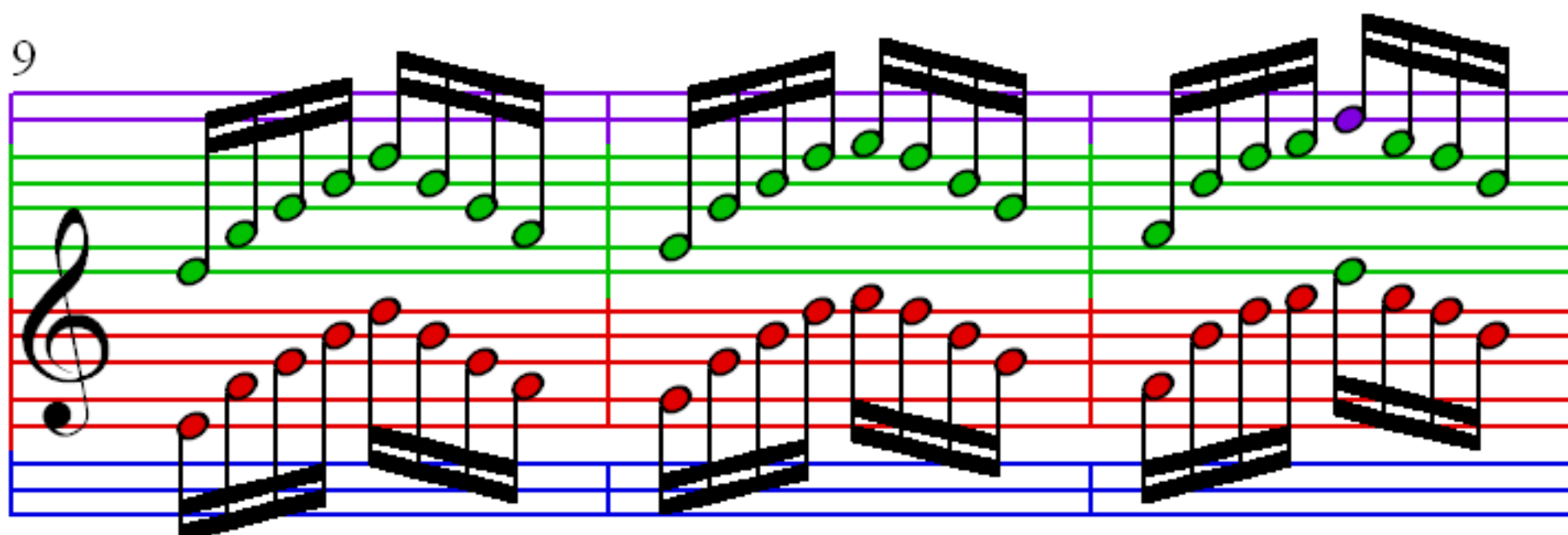
3

5

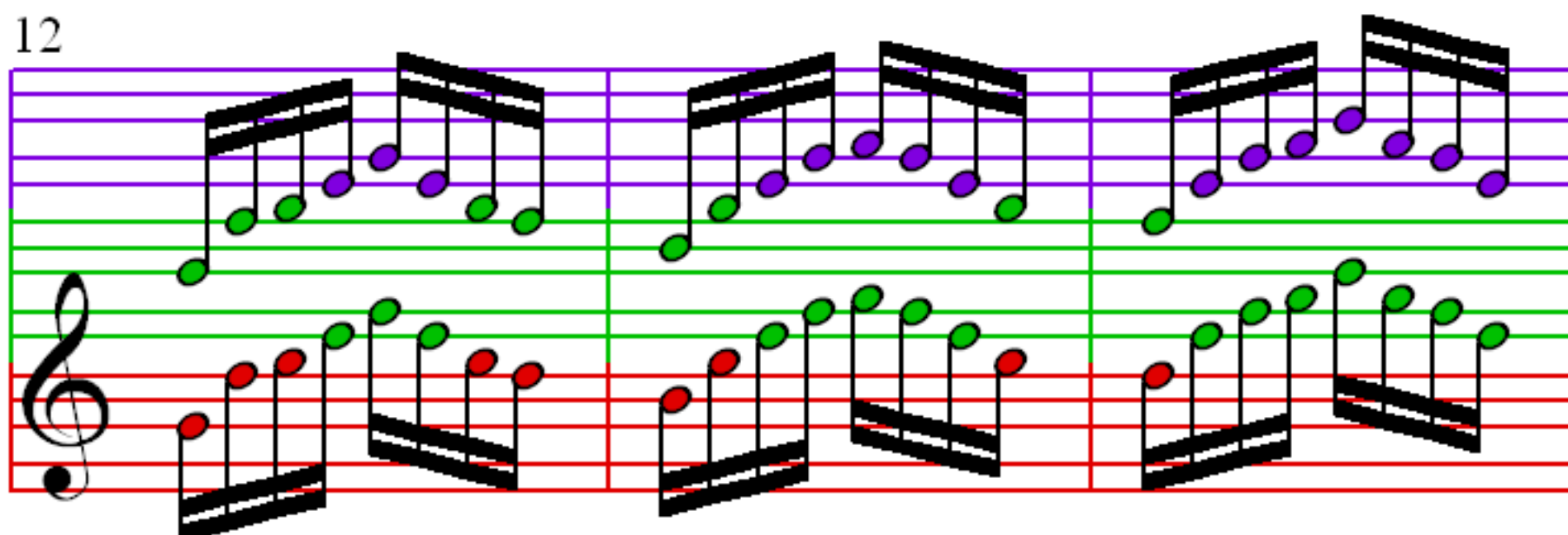
7

Detailed description: The image displays a piano exercise titled 'Five Finger Exercise 1, B Major'. It consists of eight measures of music, organized into four pairs (measures 1-2, 3-4, 5-6, and 7-8). Each pair is marked with a measure number (1, 3, 5, 7) at the beginning of the first staff. The notation is written on a grand staff with a treble and bass clef. The key signature is B major, indicated by two sharps (F# and C#) in the key signature area. The time signature is 2/4. The notes are color-coded: red for the right hand (treble clef) and blue for the left hand (bass clef). The exercise is designed to be played with five fingers (thumb to pinky) on each hand. The notes are: Measure 1: Right hand (B4, C5, D5, E5, F#5), Left hand (B2, C3, D3, E3, F#3). Measure 2: Right hand (G5, A5, B5, A5, G5), Left hand (E3, D3, C3, B2, A2). Measure 3: Right hand (F#5, E5, D5, C5, B4), Left hand (G2, F#2, E2, D2, C2). Measure 4: Right hand (A5, G5, F#5, E5, D5), Left hand (B2, A2, G2, F#2, E2). Measure 5: Right hand (C5, B4, A4, G4, F#4), Left hand (D2, C2, B1, A1, G1). Measure 6: Right hand (E5, D5, C5, B4, A4), Left hand (F#2, E2, D2, C2, B1). Measure 7: Right hand (G5, F#5, E5, D5, C5), Left hand (A2, G2, F#2, E2, D2). Measure 8: Right hand (B5, A5, G5, F#5, E5), Left hand (C3, B2, A2, G2, F#2).

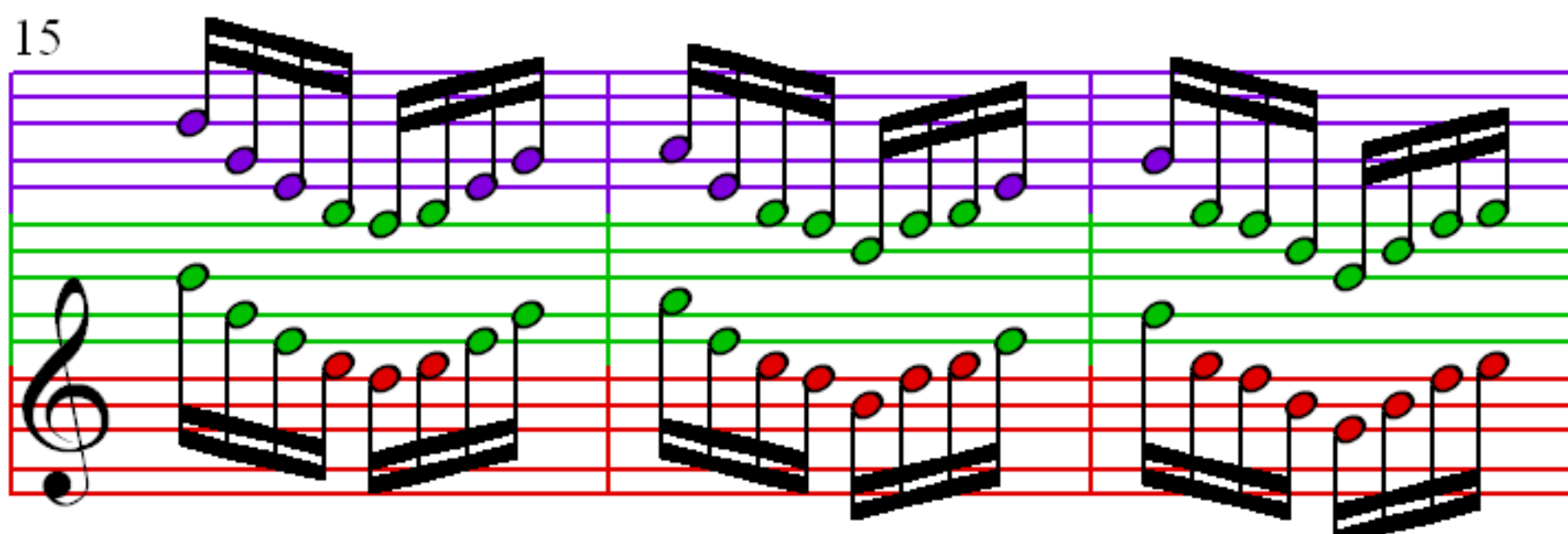
9



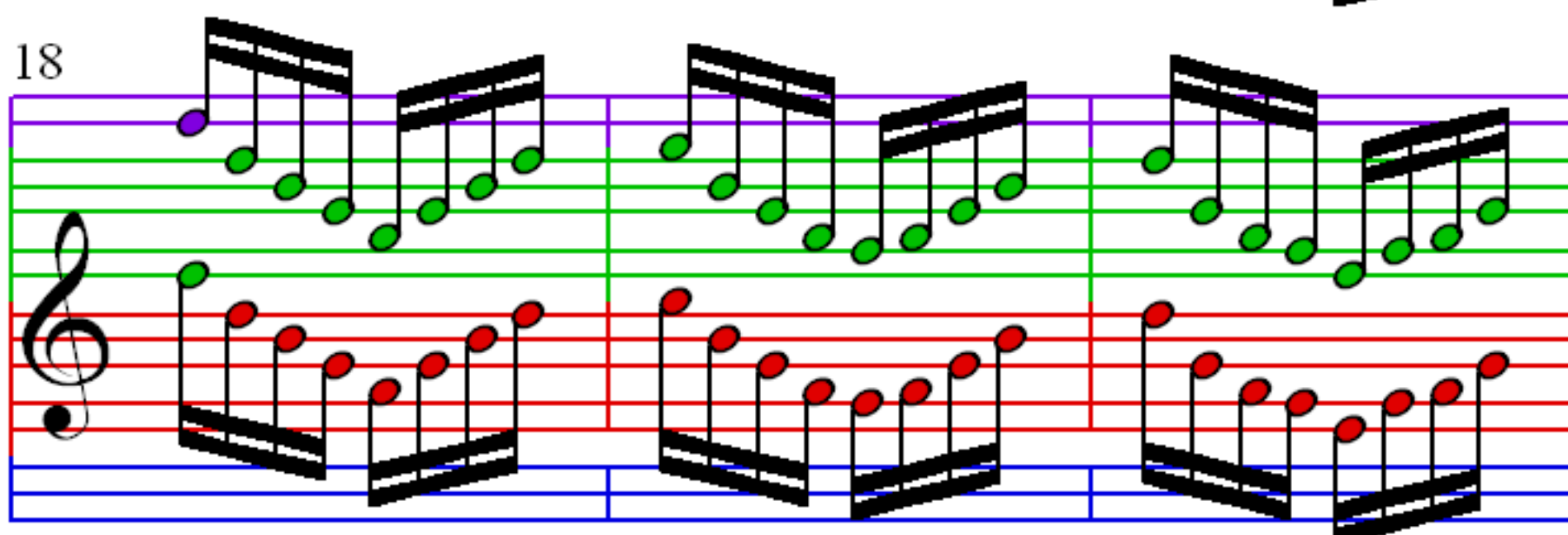
12



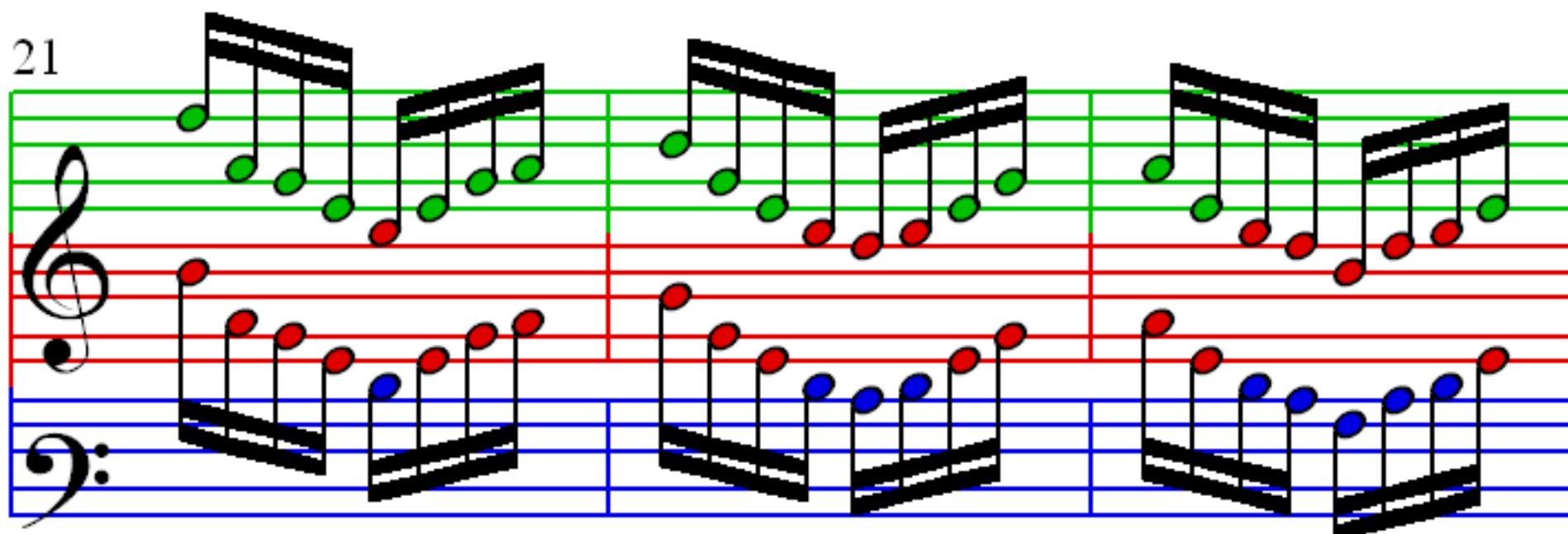
15



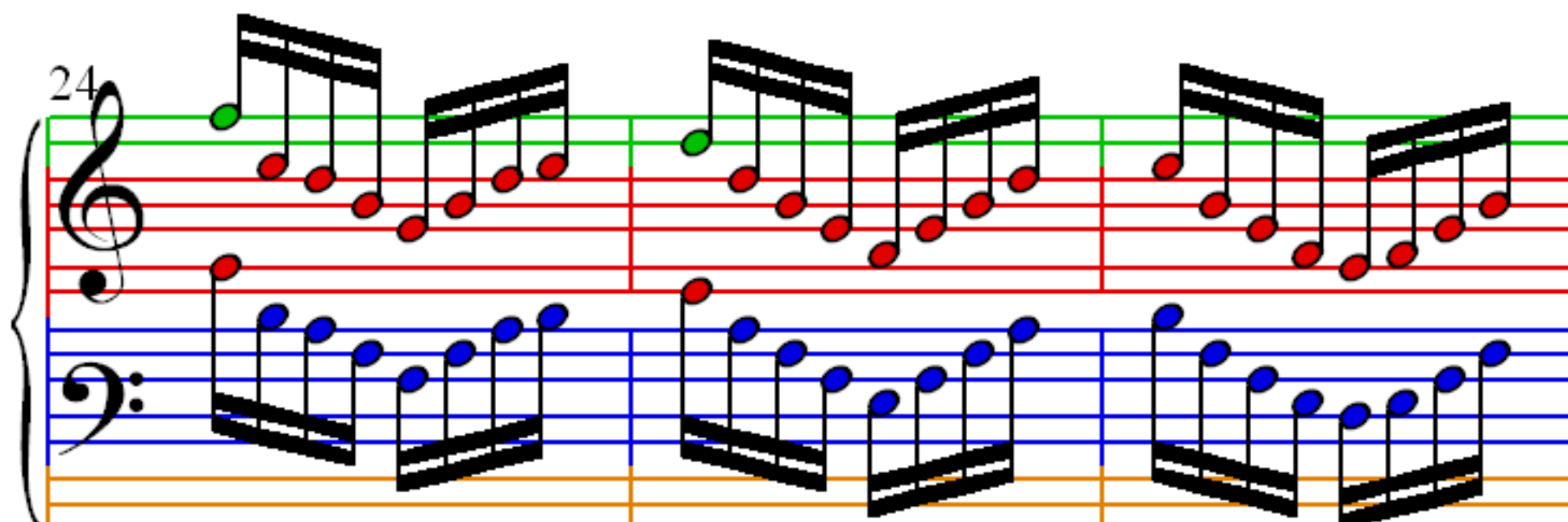
18



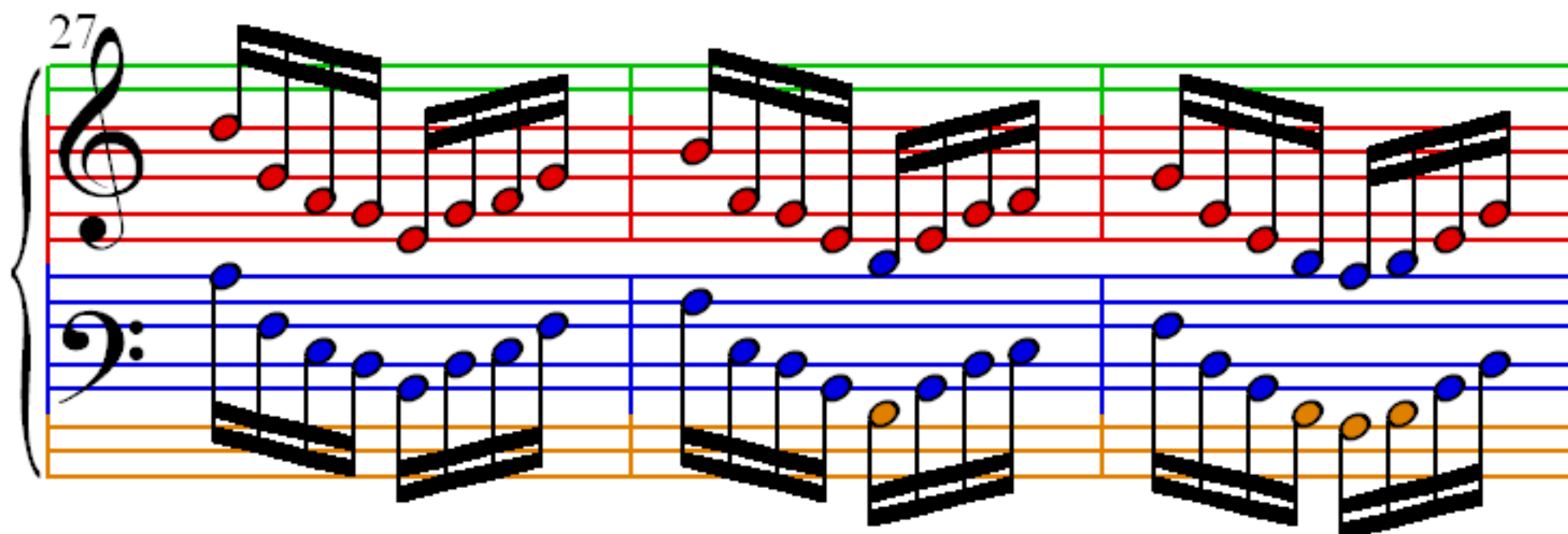
21



24



27



30

