

The Entertainer

Scott Joplin

$\text{♩} = 250$

1

Measures 1-6 of the piano introduction. The right hand (treble clef) features a descending eighth-note scale starting on G4, with notes colored purple, green, and red. The left hand (bass clef) has whole rests for measures 1-4 and then plays a descending eighth-note scale starting on E3 in measures 5 and 6, with notes colored blue. The key signature has two sharps (F# and C#), and the time signature is 4/4.

7

Measures 7-12. The right hand has whole rests in measures 7 and 8, followed by eighth-note patterns in measures 9-12, with notes colored red and green. The left hand plays a steady eighth-note accompaniment in measures 7-12, with notes colored blue. An orange box highlights the first two notes of the left hand in measure 7.

13

Measures 13-18. The right hand continues with eighth-note patterns, with notes colored green and red. The left hand continues its eighth-note accompaniment, with notes colored blue. An orange box highlights the first two notes of the left hand in measure 13.

19

Measures 19-24. The right hand has whole rests in measures 19 and 20, followed by eighth-note patterns in measures 21-24, with notes colored red and green. The left hand continues its eighth-note accompaniment, with notes colored blue. An orange box highlights the last three notes of the left hand in measure 24.

A musical score for the song "The Rose Tree". The score is written for piano (p) and features a treble and bass staff. The treble staff has a key signature of one sharp (F#) and a 2/4 time signature. The bass staff has a key signature of one flat (Bb) and a 2/4 time signature. The melody is in the treble staff, and the accompaniment is in the bass staff. The score is divided into two systems. The first system contains measures 1 through 4, and the second system contains measures 5 through 8. The melody consists of eighth and quarter notes, while the accompaniment consists of quarter and eighth notes. The score is color-coded: the treble staff is green, the bass staff is blue, and the piano (p) marking is red. The number 25 is written in the top left corner.

A musical score for the song 'The Rose Tree'. The score is written for a piano, with a treble clef on the top staff and a bass clef on the bottom staff. The top staff is red and contains the melody, while the bottom staff is blue and contains the accompaniment. The melody consists of a series of eighth and sixteenth notes, with some notes beamed together. The accompaniment consists of a steady eighth-note pattern in the left hand and a series of chords in the right hand. The score is divided into measures by vertical bar lines. The first measure of the melody is marked with a '31' in the top left corner.

A musical score for the song 'The Rose Tree'. The score is written for three parts: Treble Clef (top), Bass Clef (middle), and a third part (bottom). The Treble Clef part is marked with a '37' and features green and red notes. The Bass Clef part features blue and orange notes. The third part is a single line of orange notes. The score is divided into measures by vertical bar lines.

49

Measures 49-54. Treble clef: measures 49-50 have green eighth notes (C4, D4, E4, F4); measures 51-52 have a whole rest; measures 53-54 have red eighth notes (G4, A4, B4, C5). Bass clef: measures 49-50 have blue chords (C3, E3) and (D3, F3); measures 51-52 have blue chords (E3, G3) and (F3, A3); measures 53-54 have blue chords (G3, B3) and (A3, C4). An orange staff at the bottom contains a whole rest in measure 49 and a half note (C3) in measure 50.

55

Measures 55-60. Treble clef: measure 55 has a green whole note (C4); measure 56 has a whole rest; measures 57-58 have red eighth notes (D4, E4); measure 59 has a green eighth note (F4); measure 60 has a green whole note (G4). Bass clef: measures 55-56 have blue chords (C3, E3) and (D3, F3); measures 57-58 have blue chords (E3, G3) and (F3, A3); measure 59 has a blue chord (G3, B3); measure 60 has a blue chord (A3, C4). An orange staff at the bottom contains a whole rest in measure 55 and a half note (C3) in measure 56.

61

Measures 61-66. Treble clef: measures 61-62 have green eighth notes (C4, D4, E4, F4); measure 63 has a red eighth note (G4); measure 64 has a green whole note (A4); measures 65-66 have green eighth notes (B4, C5). Bass clef: measures 61-62 have blue chords (C3, E3) and (D3, F3); measure 63 has a blue chord (E3, G3); measure 64 has a blue chord (F3, A3); measures 65-66 have blue chords (G3, B3) and (A3, C4). An orange staff at the bottom contains a whole rest in measure 61 and a half note (C3) in measure 62.

67

Measures 67-72. Treble clef: measures 67-68 have green eighth notes (C4, D4, E4, F4); measures 69-70 have green eighth notes (G4, A4); measure 71 has a red eighth note (B4); measure 72 has a green whole note (C5). Bass clef: measures 67-68 have blue chords (C3, E3) and (D3, F3); measures 69-70 have blue chords (E3, G3) and (F3, A3); measure 71 has a blue chord (G3, B3); measure 72 has a blue chord (A3, C4). An orange staff at the bottom contains a whole rest in measure 67 and a half note (C3) in measure 68.

73

73

79

79

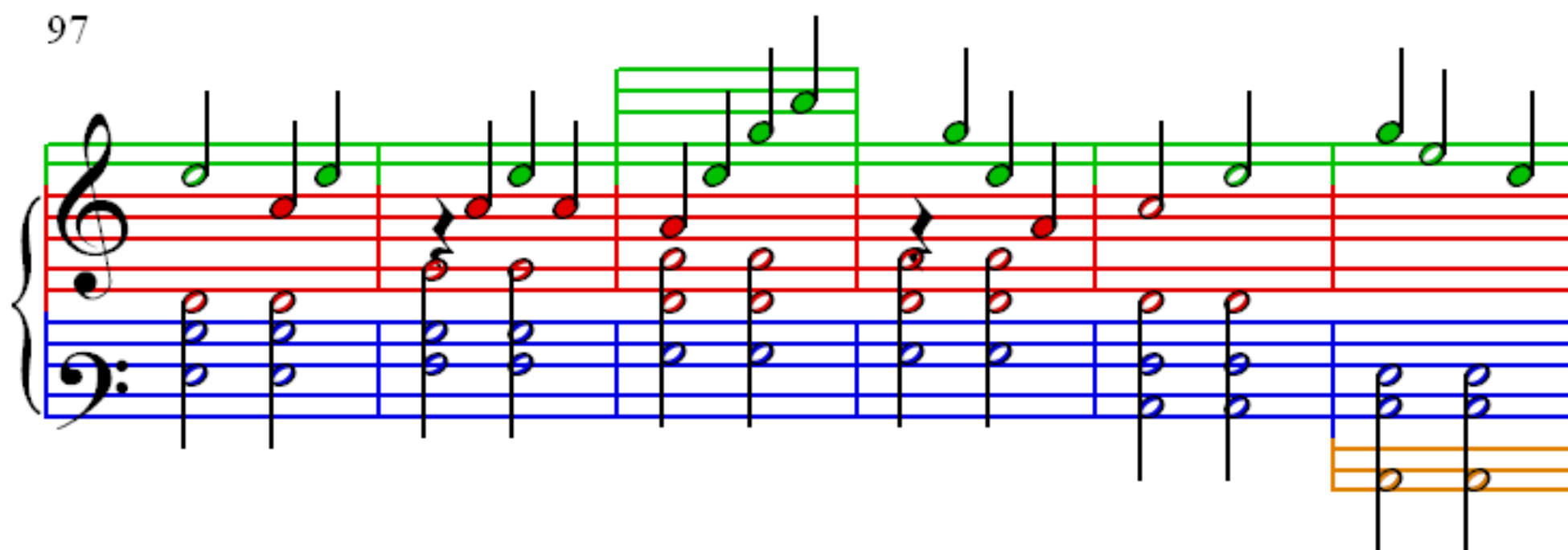
85

85

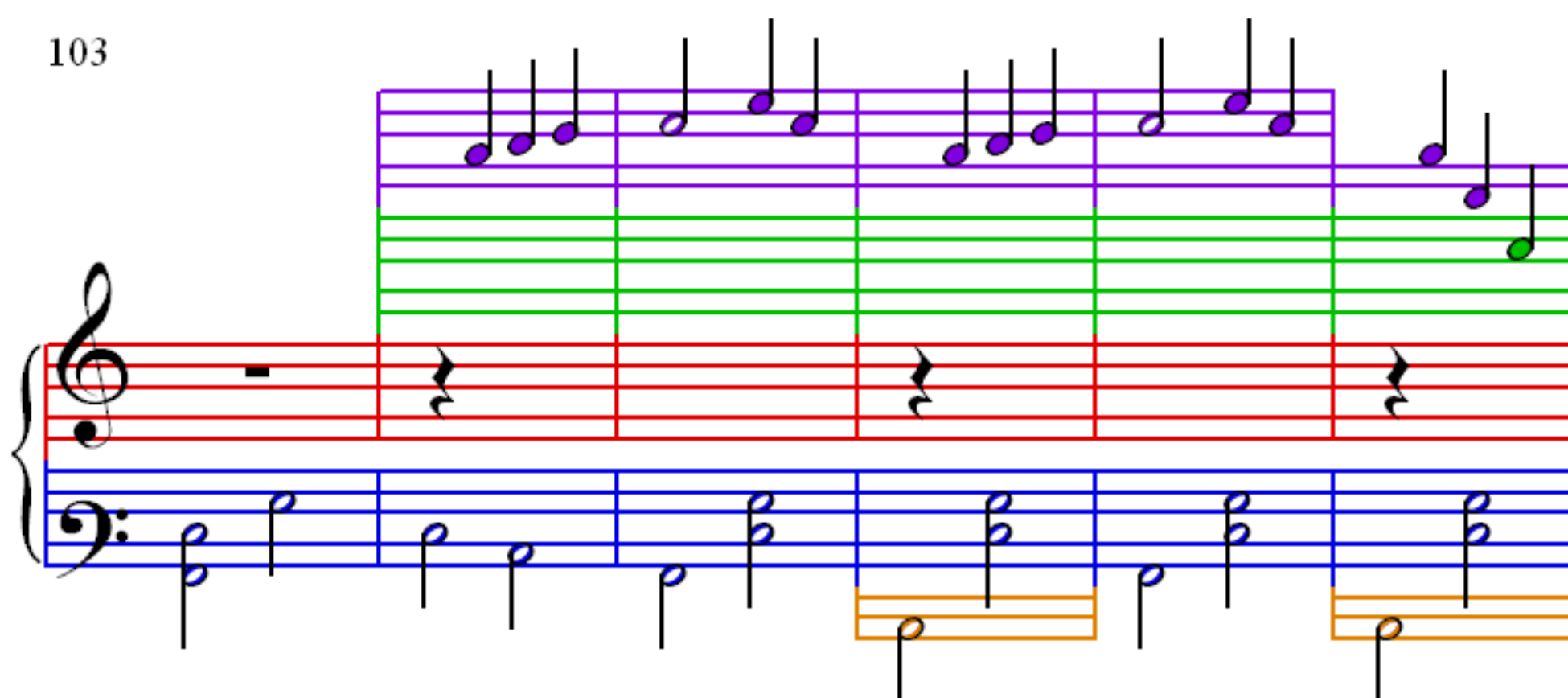
91

91

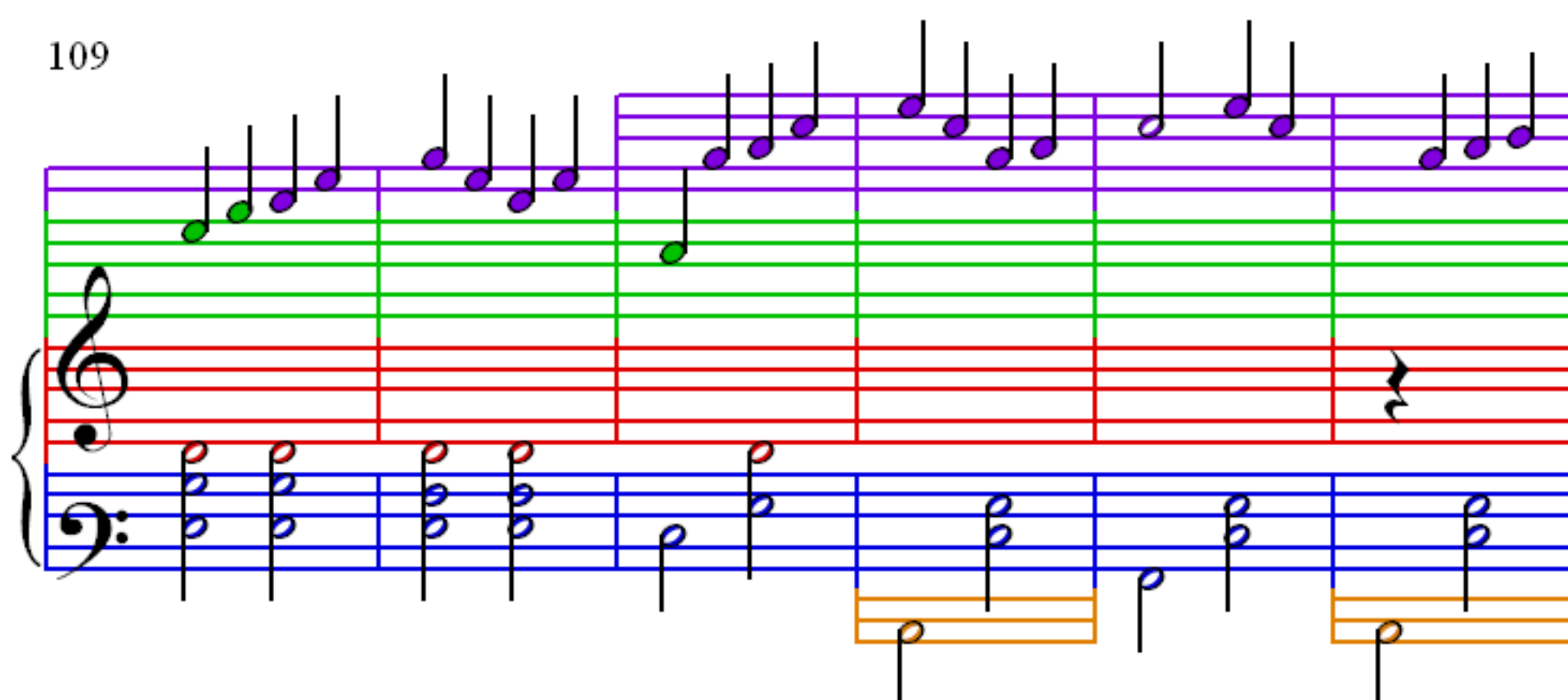
97



103



109



115

Measures 115-120. The top staff (treble clef) contains purple notes. The middle staff (red) is empty. The bottom staff (bass clef) contains blue notes. The music is in 4/4 time.

121

Measures 121-126. The top staff (treble clef) contains purple notes. The middle staff (red) is empty. The bottom staff (bass clef) contains blue notes. The music is in 4/4 time. There are orange brackets under the bottom staff in measures 122 and 124.

127

Measures 127-132. The top staff (treble clef) contains purple notes. The middle staff (red) is empty. The bottom staff (bass clef) contains blue notes. The music is in 4/4 time. There are orange brackets under the bottom staff in measures 127 and 129.

133

Measures 133-138 of a musical score. The system consists of a grand staff with a treble clef and a bass clef. The treble staff has a green line and a red line. The bass staff has a blue line and a red line. The music is written in a key with one flat (B-flat). The melody in the treble staff starts with a half note G4, followed by a quarter note A4, and then a half note B4. The bass staff has a half note F3, followed by a quarter note G3, and then a half note A3. The music continues with various intervals and rests.

139

Measures 139-144 of a musical score. The system consists of a grand staff with a treble clef and a bass clef. The treble staff has a green line and a red line. The bass staff has a blue line and a red line. The music is written in a key with one flat (B-flat). The melody in the treble staff starts with a half note G4, followed by a quarter note A4, and then a half note B4. The bass staff has a half note F3, followed by a quarter note G3, and then a half note A3. The music continues with various intervals and rests.

145

Measures 145-150 of a musical score. The system consists of a grand staff with a treble clef and a bass clef. The treble staff has a green line and a red line. The bass staff has a blue line and a red line. The music is written in a key with one flat (B-flat). The melody in the treble staff starts with a half note G4, followed by a quarter note A4, and then a half note B4. The bass staff has a half note F3, followed by a quarter note G3, and then a half note A3. The music continues with various intervals and rests.

151

Measures 151-156 of a musical score. The system consists of a grand staff with a treble clef and a bass clef. The treble staff has a green line and a red line. The bass staff has a blue line and a red line. The music is written in a key with one flat (B-flat). The melody in the treble staff starts with a half note G4, followed by a quarter note A4, and then a half note B4. The bass staff has a half note F3, followed by a quarter note G3, and then a half note A3. The music continues with various intervals and rests.

157

163

The image displays two systems of musical notation for a piano piece. Each system consists of three staves: a treble staff (top), a bass staff (middle), and a separate lower staff (bottom). The treble staff uses a green line and contains various notes, including some with green dots. The bass staff uses a blue line and contains notes with blue dots. The lower staff uses an orange line and contains notes with orange dots. The first system covers measures 157 to 162, and the second system covers measures 163 to 168. The notation includes various note values, rests, and bar lines.