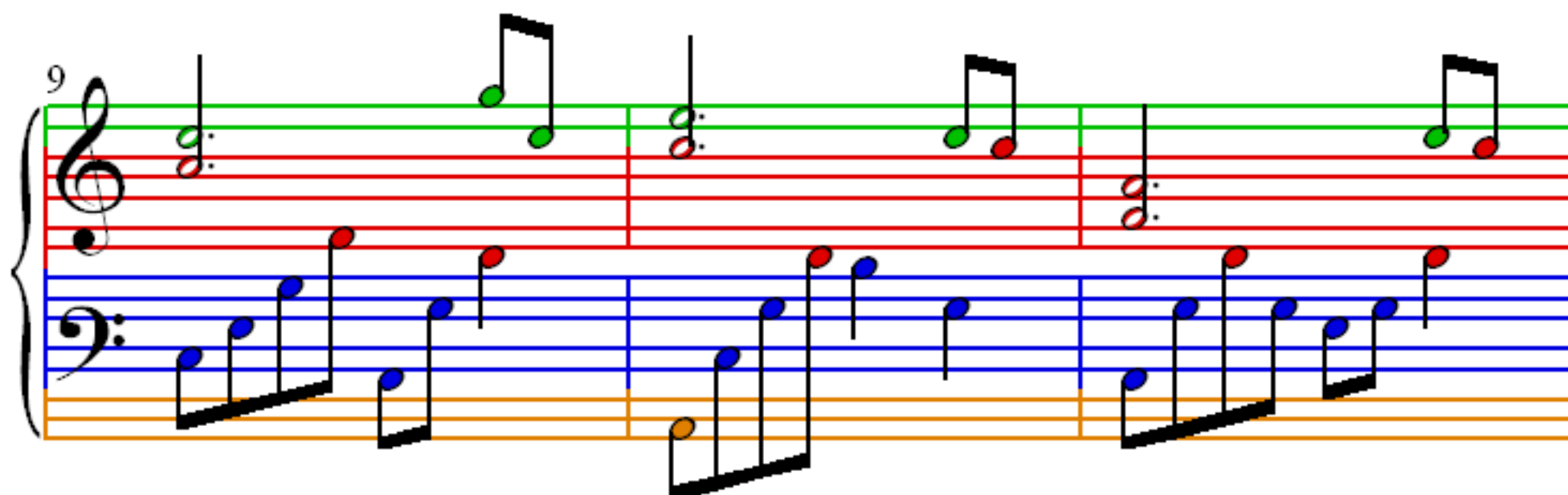
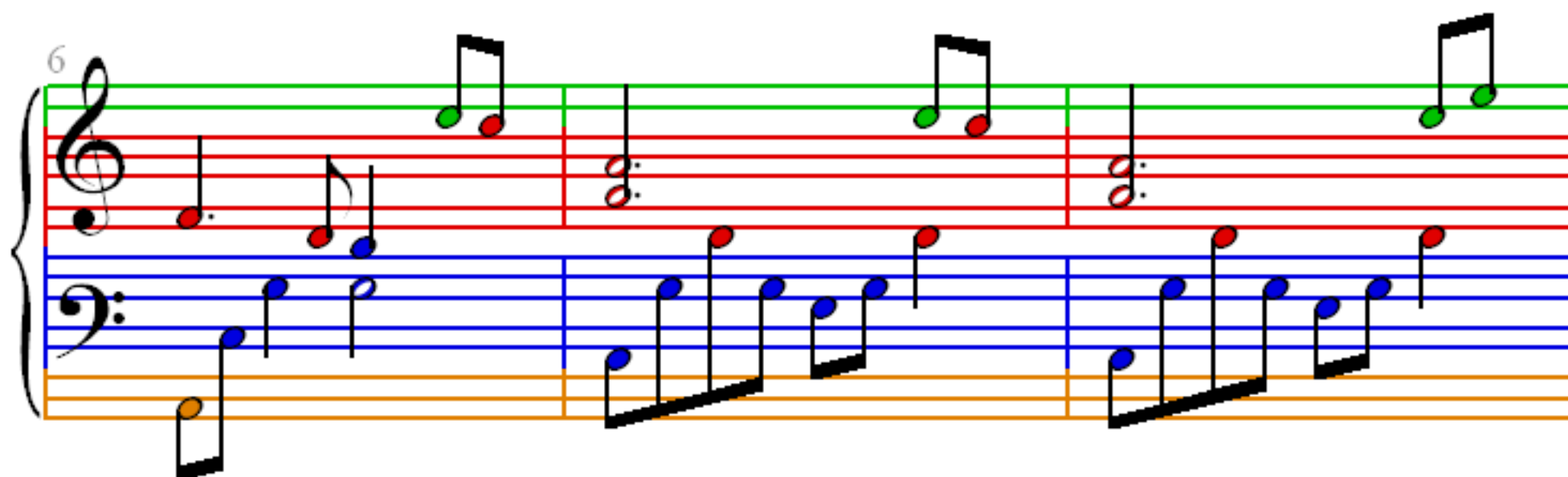
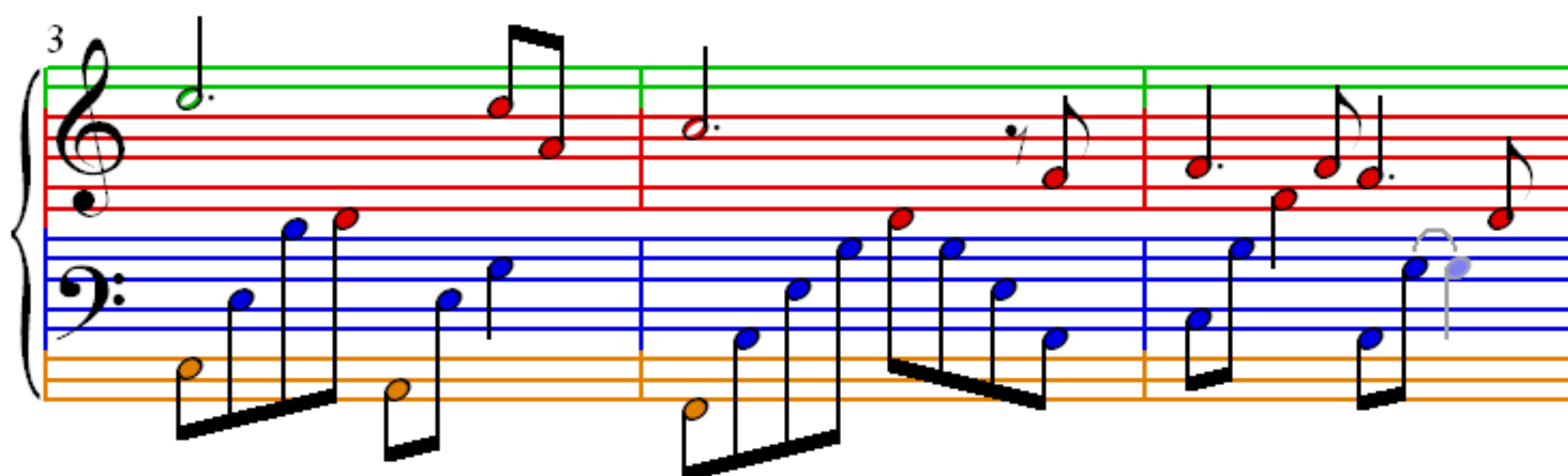
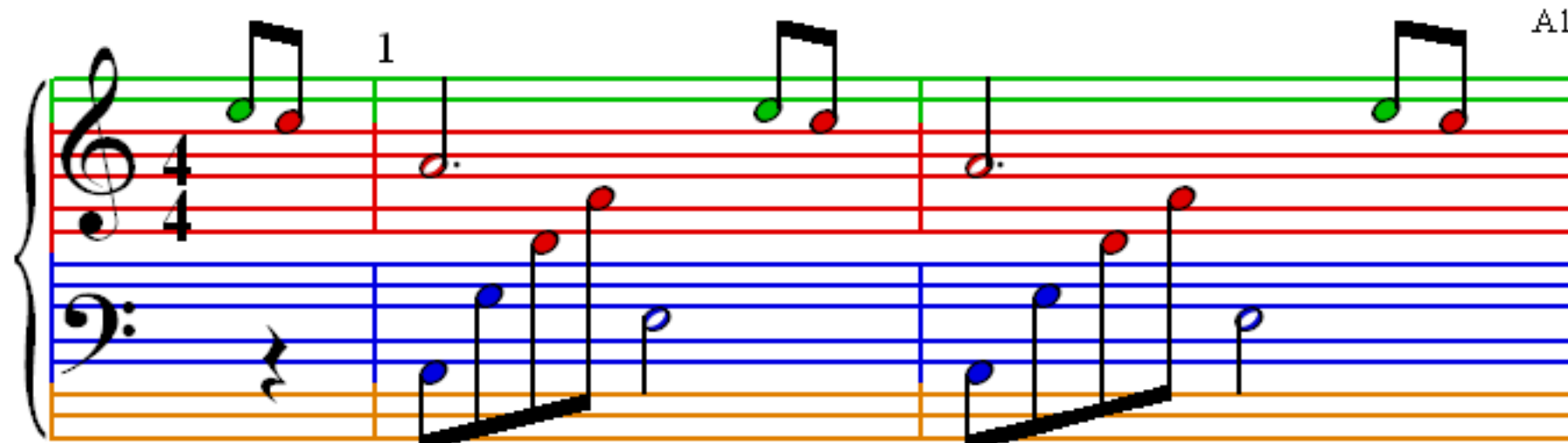
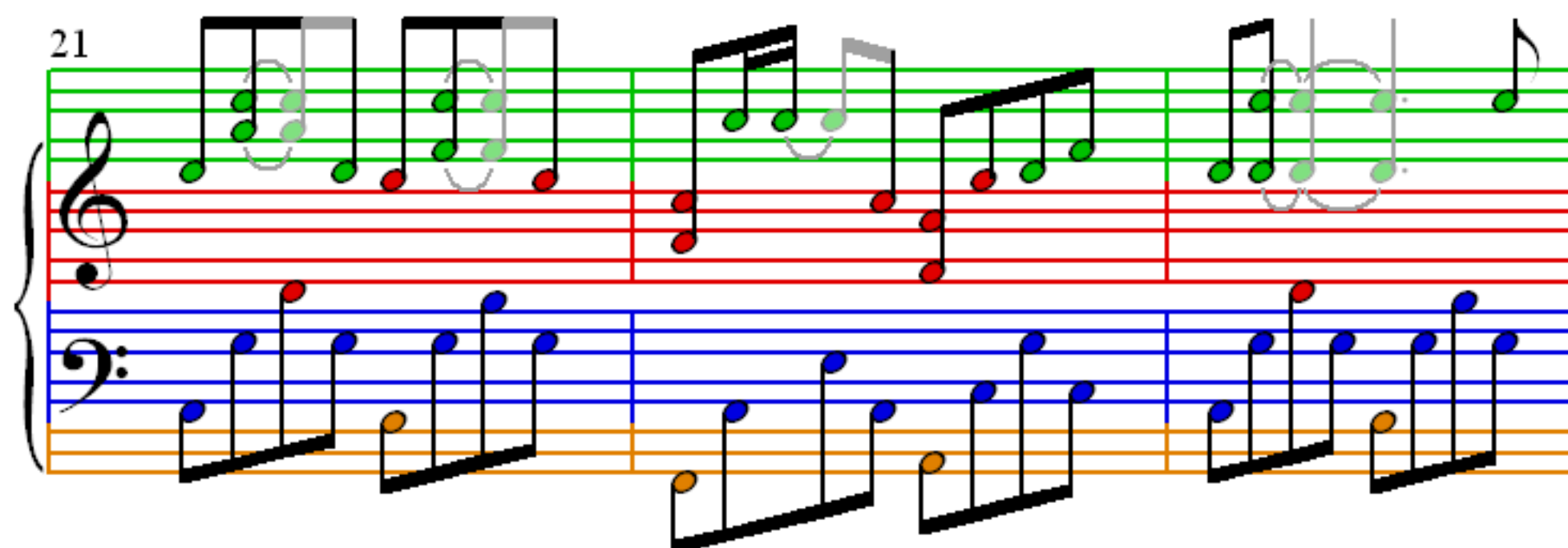
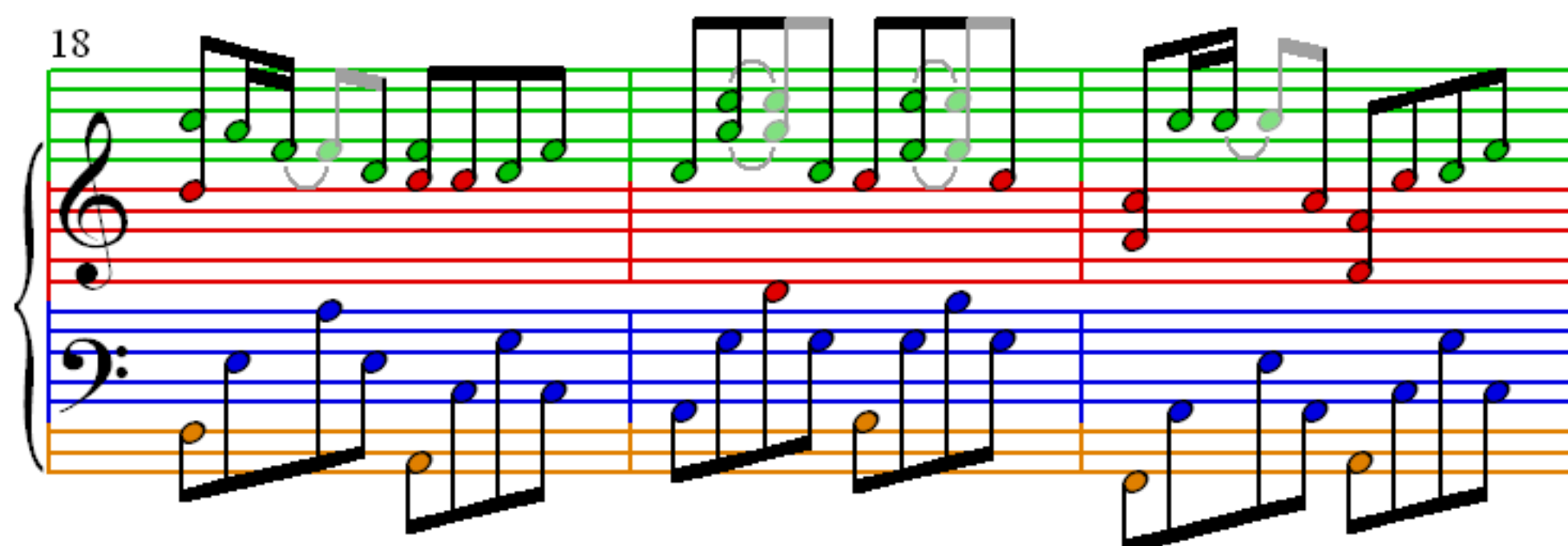
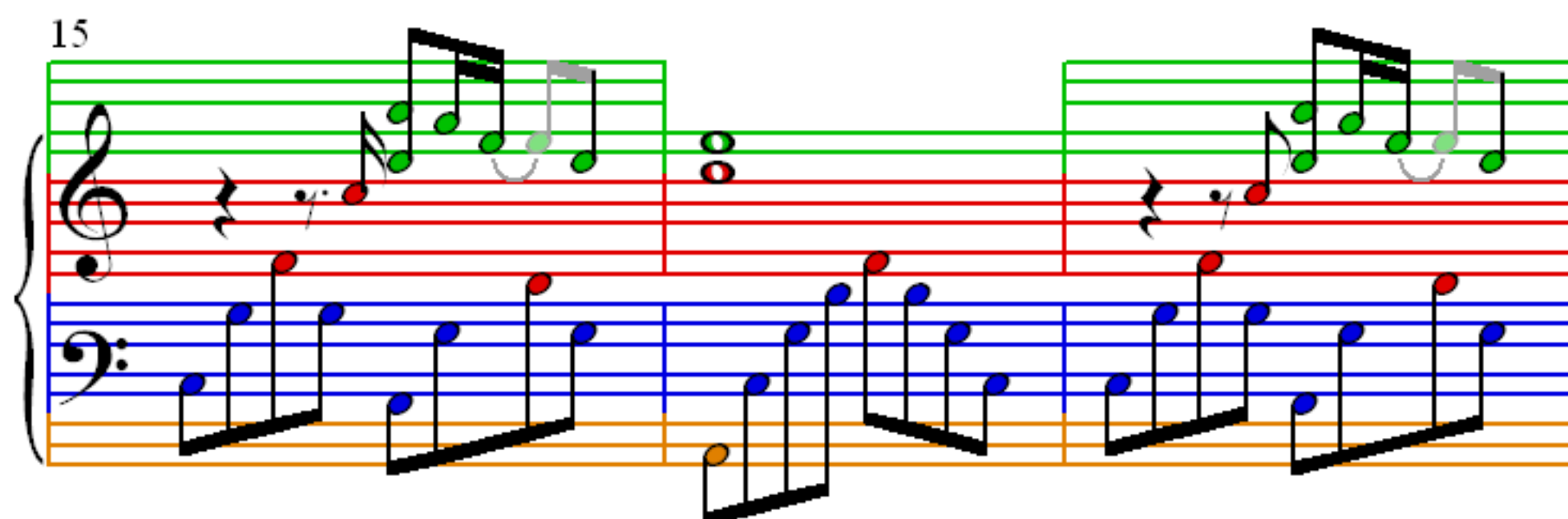
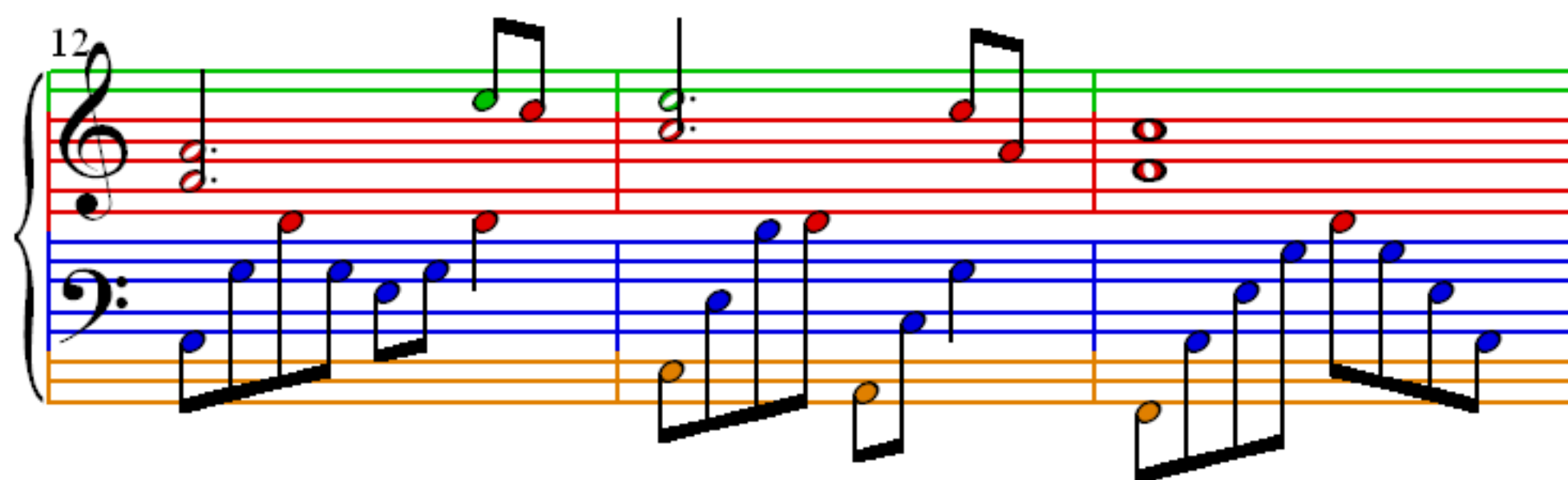


♩ = 75

One Last Song

A1





24

Measures 24-26. Treble clef: Measure 24 has eighth notes (green, red, green, red, green, red, green, red) and sixteenth notes (green, red, green, red, green, red, green, red). Measure 25 has a whole rest. Measure 26 has eighth notes (green, red, green, red, green, red, green, red). Bass clef: Measure 24 has eighth notes (blue, red, blue, red, blue, red, blue, red). Measure 25 has eighth notes (blue, red, blue, red, blue, red, blue, red). Measure 26 has eighth notes (blue, red, blue, red, blue, red, blue, red).

27

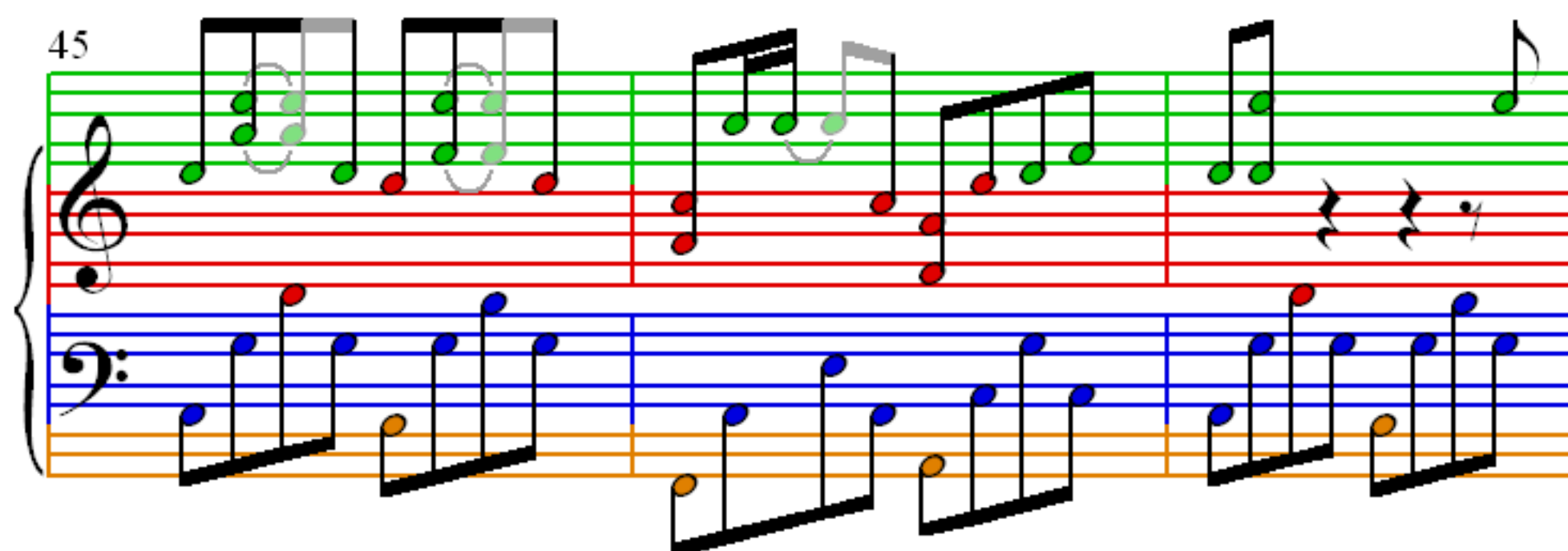
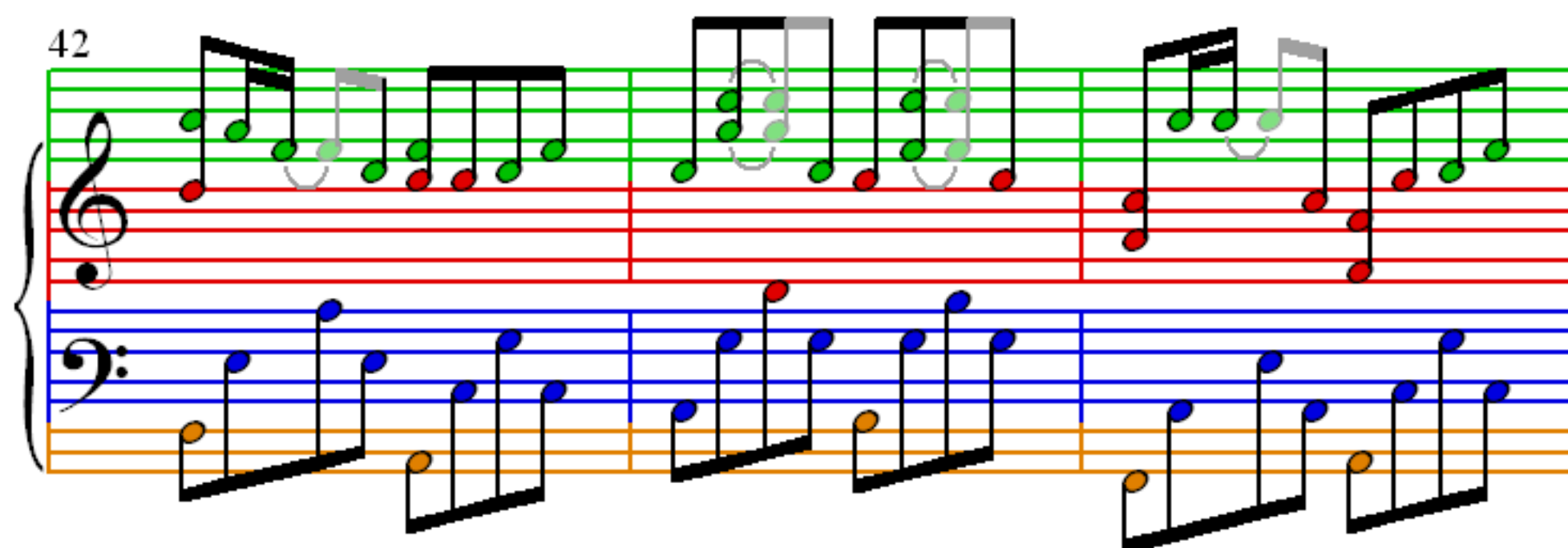
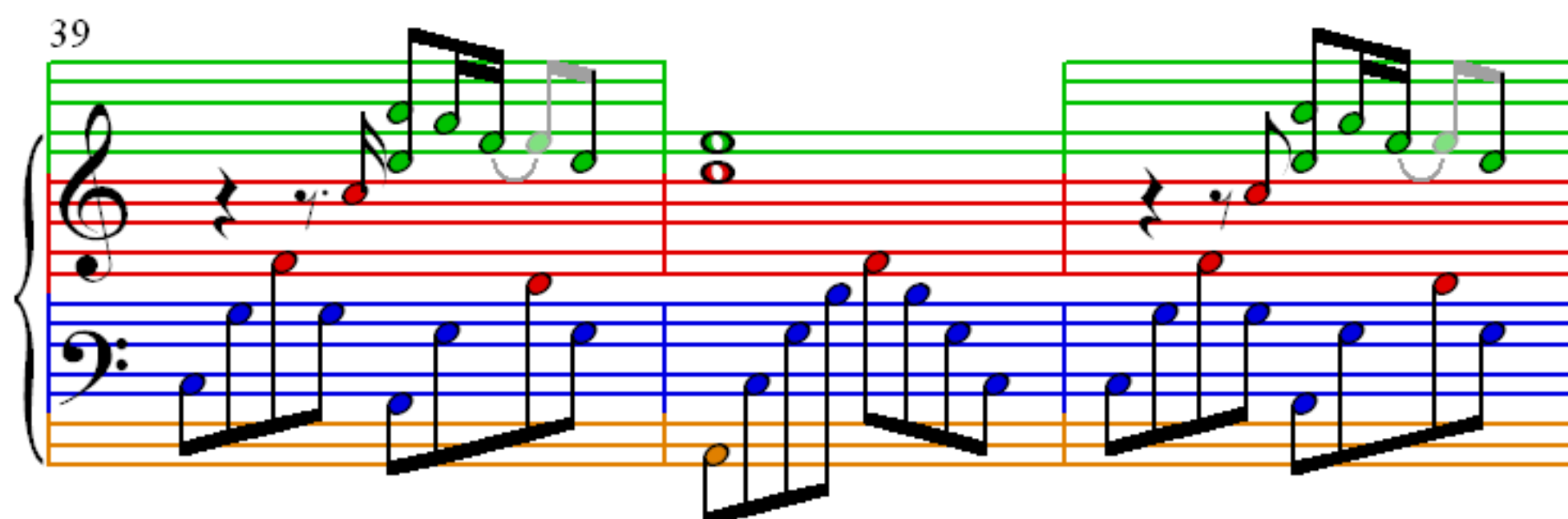
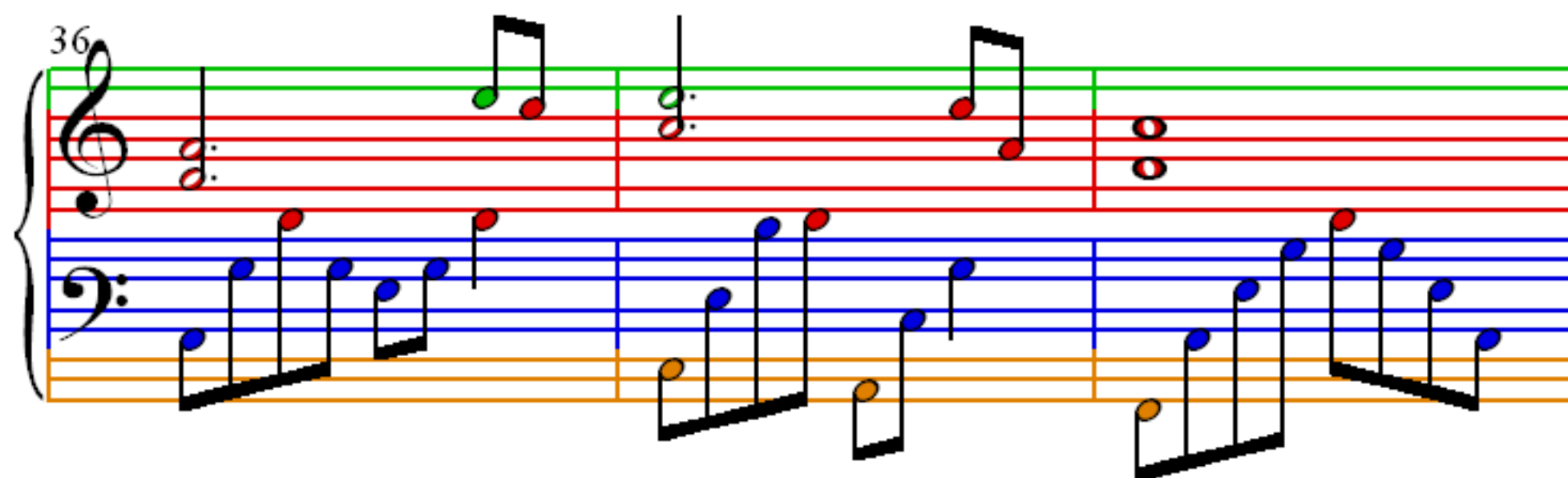
Measures 27-29. Treble clef: Measure 27 has eighth notes (green, red, green, red, green, red, green, red) and sixteenth notes (green, red, green, red, green, red, green, red). Measure 28 has a whole rest. Measure 29 has eighth notes (green, red, green, red, green, red, green, red). Bass clef: Measure 27 has eighth notes (blue, red, blue, red, blue, red, blue, red). Measure 28 has eighth notes (blue, red, blue, red, blue, red, blue, red). Measure 29 has eighth notes (blue, red, blue, red, blue, red, blue, red).

30

Measures 30-32. Treble clef: Measure 30 has eighth notes (green, red, green, red, green, red, green, red) and sixteenth notes (green, red, green, red, green, red, green, red). Measure 31 has a whole rest. Measure 32 has eighth notes (green, red, green, red, green, red, green, red). Bass clef: Measure 30 has eighth notes (blue, red, blue, red, blue, red, blue, red). Measure 31 has eighth notes (blue, red, blue, red, blue, red, blue, red). Measure 32 has eighth notes (blue, red, blue, red, blue, red, blue, red).

33

Measures 33-35. Treble clef: Measure 33 has eighth notes (green, red, green, red, green, red, green, red) and sixteenth notes (green, red, green, red, green, red, green, red). Measure 34 has a whole rest. Measure 35 has eighth notes (green, red, green, red, green, red, green, red). Bass clef: Measure 33 has eighth notes (blue, red, blue, red, blue, red, blue, red). Measure 34 has eighth notes (blue, red, blue, red, blue, red, blue, red). Measure 35 has eighth notes (blue, red, blue, red, blue, red, blue, red).



48

Measures 48-50. Treble clef: Measure 48 has eighth-note runs with ties. Measure 49 has a dotted quarter note followed by eighth notes. Measure 50 has a dotted quarter note followed by eighth notes. Bass clef: Steady eighth-note accompaniment.

51

Measures 51-53. Treble clef: Measure 51 has eighth-note runs. Measure 52 has a dotted quarter note followed by eighth notes. Measure 53 has eighth notes. Bass clef: Steady eighth-note accompaniment.

54

Measures 54-56. Treble clef: Measure 54 has eighth-note runs. Measure 55 has a dotted quarter note followed by eighth notes. Measure 56 has eighth notes. Bass clef: Steady eighth-note accompaniment.

57

Measures 57-59. Treble clef: Measure 57 has eighth-note runs. Measure 58 has a dotted quarter note followed by eighth notes. Measure 59 has eighth notes. Bass clef: Steady eighth-note accompaniment.

60

Measures 60-62. Treble clef: Measure 60 has a C4-E4-G4 triad. Measure 61 has a C4-E4-G4 triad tied to the previous measure, followed by an eighth-note melody. Measure 62 has a C4-E4-G4 triad tied to the previous measure, followed by an eighth-note melody. Bass clef: Measure 60 has a C3-E3-G3 triad. Measure 61 has a C3-E3-G3 triad tied to the previous measure, followed by an eighth-note melody. Measure 62 has a C3-E3-G3 triad tied to the previous measure, followed by an eighth-note melody.

63

Measures 63-65. Treble clef: Measure 63 has a C4-E4-G4 triad. Measure 64 has a C4-E4-G4 triad tied to the previous measure, followed by an eighth-note melody. Measure 65 has a C4-E4-G4 triad tied to the previous measure, followed by an eighth-note melody. Bass clef: Measure 63 has a C3-E3-G3 triad. Measure 64 has a C3-E3-G3 triad tied to the previous measure, followed by an eighth-note melody. Measure 65 has a C3-E3-G3 triad tied to the previous measure, followed by an eighth-note melody.

66

Measures 66-68. Treble clef: Measure 66 has a C4-E4-G4 triad. Measure 67 has a C4-E4-G4 triad tied to the previous measure, followed by an eighth-note melody. Measure 68 has a C4-E4-G4 triad tied to the previous measure, followed by an eighth-note melody. Bass clef: Measure 66 has a C3-E3-G3 triad. Measure 67 has a C3-E3-G3 triad tied to the previous measure, followed by an eighth-note melody. Measure 68 has a C3-E3-G3 triad tied to the previous measure, followed by an eighth-note melody.

69

Measures 69-71. Treble clef has green notes, bass clef has blue notes. Measure 69 has a whole rest in the bass. Measure 70 has a whole rest in the bass. Measure 71 has a whole rest in the bass.

72

Measures 72-74. Treble clef has green notes, bass clef has blue notes. Measure 72 has a whole rest in the bass. Measure 73 has a whole rest in the bass. Measure 74 has a whole rest in the bass.

75

Measures 75-77. Treble clef has green notes, bass clef has blue notes. Measure 75 has a whole rest in the bass. Measure 76 has a whole rest in the bass. Measure 77 has a whole rest in the bass.

78

Measures 78-80. Treble clef has green notes, bass clef has blue notes. Measure 78 has a whole rest in the bass. Measure 79 has a whole rest in the bass. Measure 80 has a whole rest in the bass.