

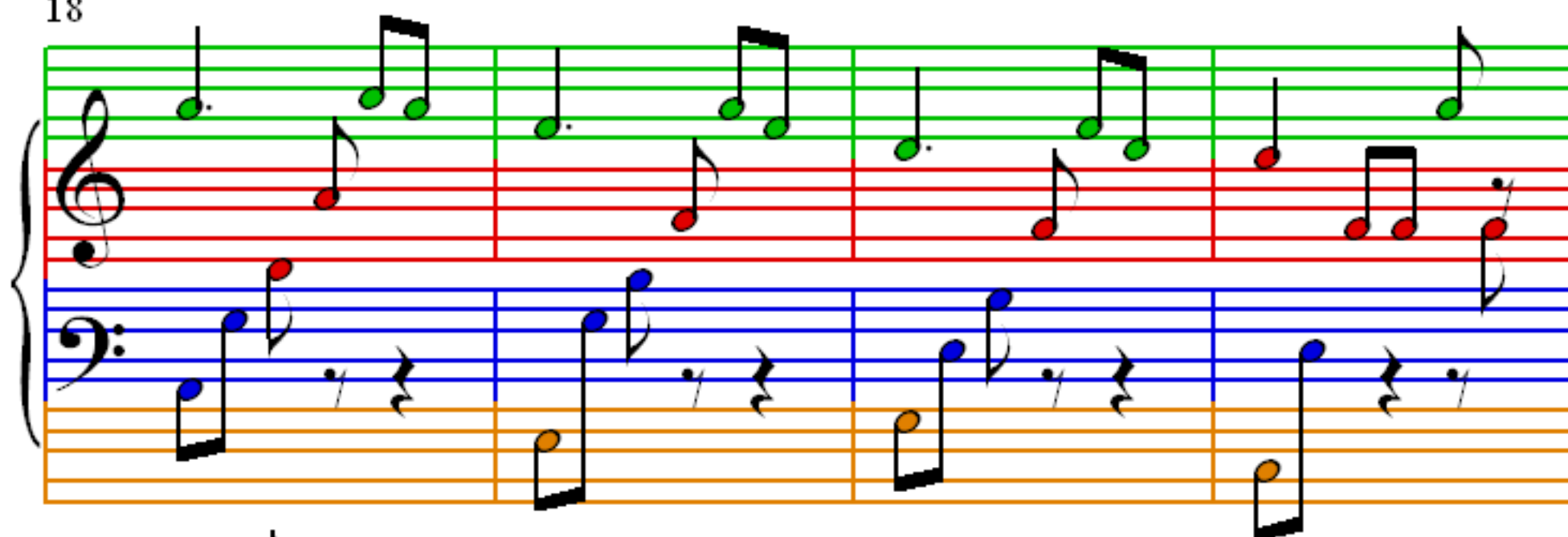
# Fur Elise

Beethoven

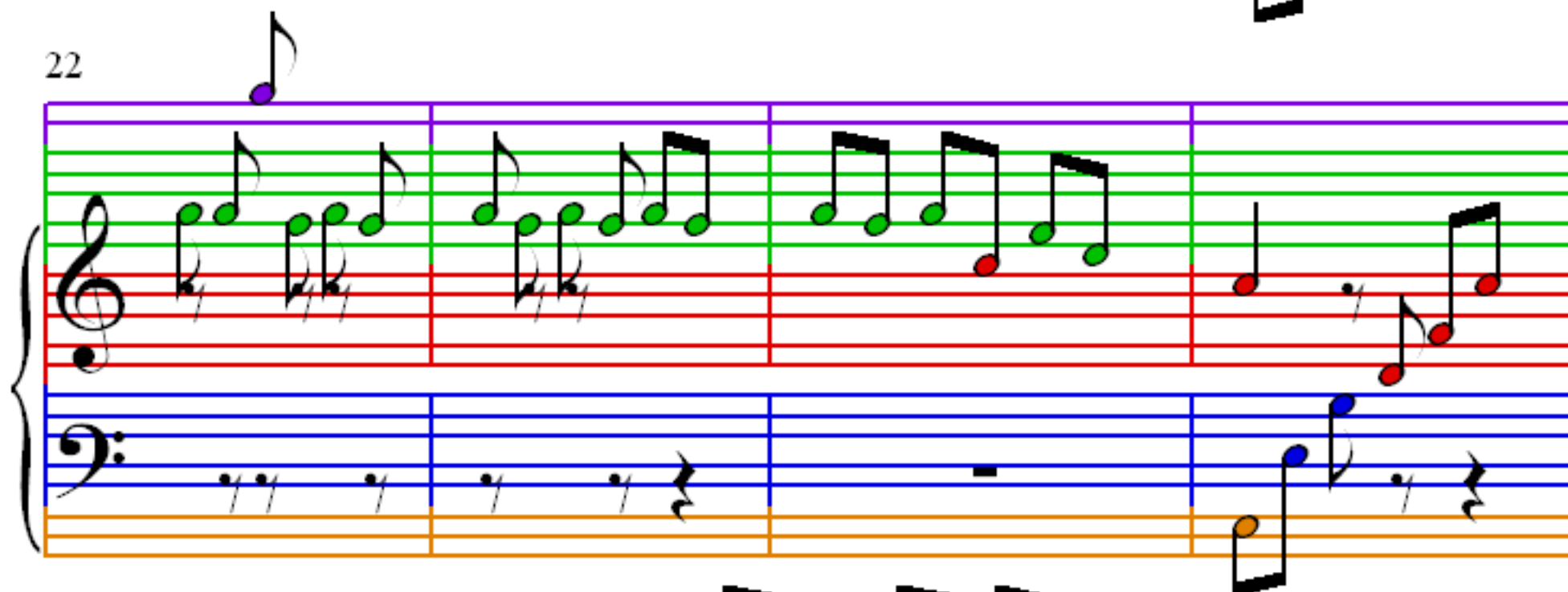
$\bullet = 160$

The image displays the first 14 measures of the piano piece 'Für Elise' by Ludwig van Beethoven. The score is written for piano and is in 3/4 time. It is presented in a four-measure system format, with measures 1, 6, 10, and 14 marked at the beginning of each system. The notation uses a grand staff with a treble and bass clef. The right hand (treble clef) features a melody of eighth and sixteenth notes, while the left hand (bass clef) provides a harmonic accompaniment with chords and single notes. The notes are color-coded: green for the right hand and blue for the left hand. The background of the staves is divided into three horizontal bands: green for the top line, red for the middle lines, and orange for the bottom line. The tempo is indicated as 160 beats per minute.

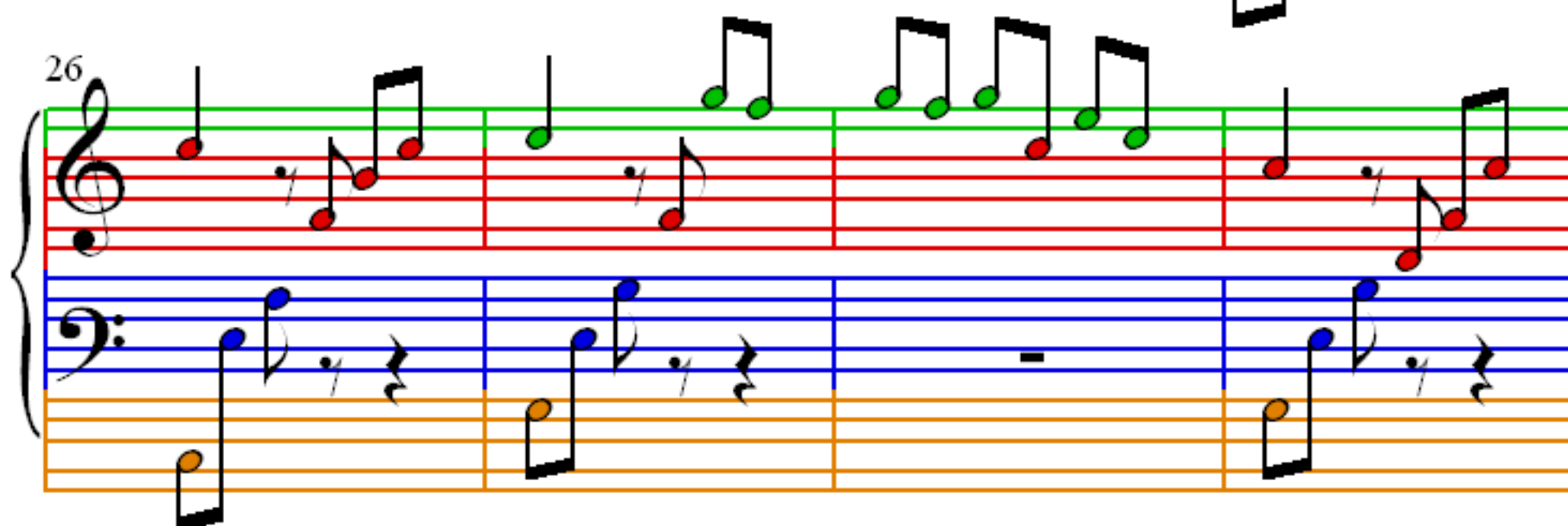
18



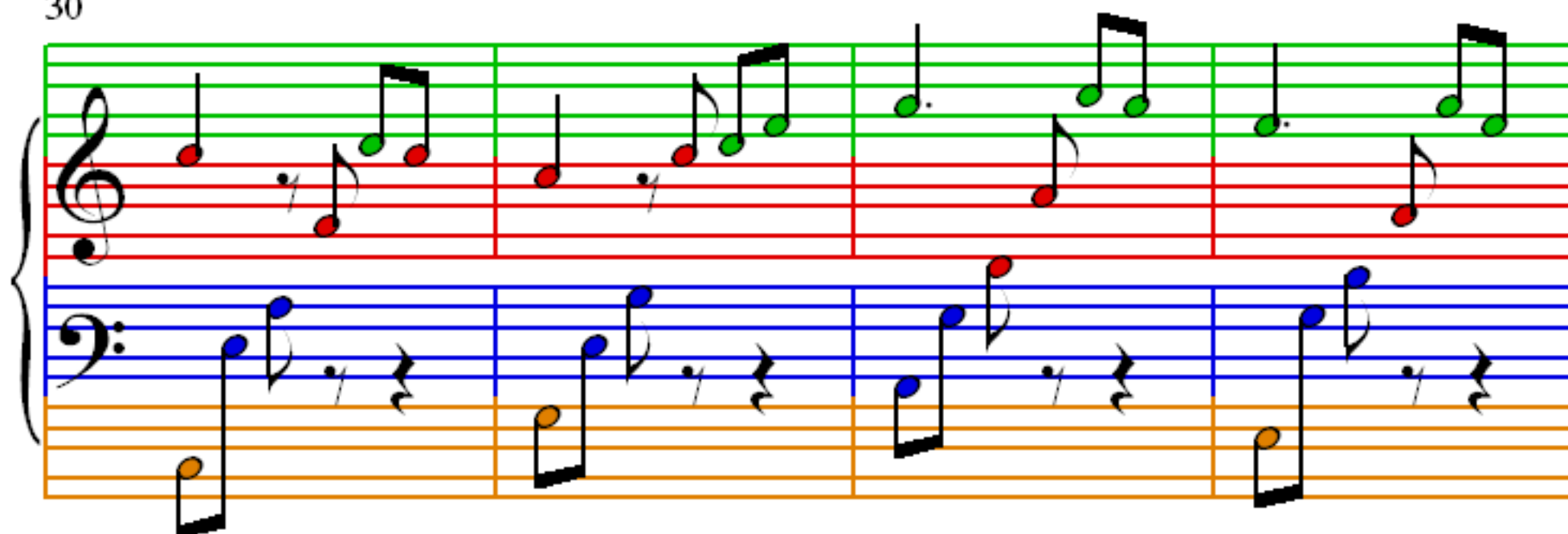
22



26



30



34

Measures 34-37 of the musical score for 'Für Elise'. The system consists of two staves: a treble staff (top) and a bass staff (bottom). The treble staff has a green line at the top and a red line at the bottom. The bass staff has a blue line at the top and an orange line at the bottom. The music is written in 2/4 time. Measure 34: Treble staff has a quarter note G4, an eighth rest, and a quarter note A4. Bass staff has a quarter note C3, an eighth rest, and a quarter note D3. Measure 35: Treble staff has a quarter note B4, an eighth rest, and a quarter note C5. Bass staff has a quarter note E3, an eighth rest, and a quarter note F3. Measure 36: Treble staff has a quarter note D5, an eighth rest, and a quarter note E5. Bass staff has a quarter note G3, an eighth rest, and a quarter note A3. Measure 37: Treble staff has a quarter note F5, an eighth rest, and a quarter note G5. Bass staff has a quarter note B3, an eighth rest, and a quarter note C4.

38

Measures 38-41 of the musical score for 'Für Elise'. The system consists of two staves: a treble staff (top) and a bass staff (bottom). The treble staff has a green line at the top and a red line at the bottom. The bass staff has a blue line at the top and an orange line at the bottom. The music is written in 2/4 time. Measure 38: Treble staff has a quarter note G4, an eighth rest, and a quarter note A4. Bass staff has a quarter note C3, an eighth rest, and a quarter note D3. Measure 39: Treble staff has a quarter note B4, an eighth rest, and a quarter note C5. Bass staff has a quarter note E3, an eighth rest, and a quarter note F3. Measure 40: Treble staff has a quarter note D5, an eighth rest, and a quarter note E5. Bass staff has a quarter note G3, an eighth rest, and a quarter note A3. Measure 41: Treble staff has a quarter note F5, an eighth rest, and a quarter note G5. Bass staff has a quarter note B3, an eighth rest, and a quarter note C4.

42

Measures 42-45 of the musical score for 'Für Elise'. The system consists of two staves: a treble staff (top) and a bass staff (bottom). The treble staff has a green line at the top and a red line at the bottom. The bass staff has a blue line at the top and an orange line at the bottom. The music is written in 2/4 time. Measure 42: Treble staff has a quarter note G4, an eighth rest, and a quarter note A4. Bass staff has a quarter note C3, an eighth rest, and a quarter note D3. Measure 43: Treble staff has a quarter note B4, an eighth rest, and a quarter note C5. Bass staff has a quarter note E3, an eighth rest, and a quarter note F3. Measure 44: Treble staff has a quarter note D5, an eighth rest, and a quarter note E5. Bass staff has a quarter note G3, an eighth rest, and a quarter note A3. Measure 45: Treble staff has a quarter note F5, an eighth rest, and a quarter note G5. Bass staff has a quarter note B3, an eighth rest, and a quarter note C4.

46

Measures 46-49 of the musical score for 'Für Elise'. The system consists of two staves: a treble staff (top) and a bass staff (bottom). The treble staff has a green line at the top and a red line at the bottom. The bass staff has a blue line at the top and an orange line at the bottom. The music is written in 2/4 time. Measure 46: Treble staff has a quarter note G4, an eighth rest, and a quarter note A4. Bass staff has a quarter note C3, an eighth rest, and a quarter note D3. Measure 47: Treble staff has a quarter note B4, an eighth rest, and a quarter note C5. Bass staff has a quarter note E3, an eighth rest, and a quarter note F3. Measure 48: Treble staff has a quarter note D5, an eighth rest, and a quarter note E5. Bass staff has a quarter note G3, an eighth rest, and a quarter note A3. Measure 49: Treble staff has a quarter note F5, an eighth rest, and a quarter note G5. Bass staff has a quarter note B3, an eighth rest, and a quarter note C4.

50

The musical score for measures 50-53 is presented on a grand staff. The treble staff, with a green background, contains eighth and sixteenth notes, including triplet markings. The bass staff, with a blue background, contains eighth and sixteenth notes. The music is in 4/4 time and spans four measures.

54

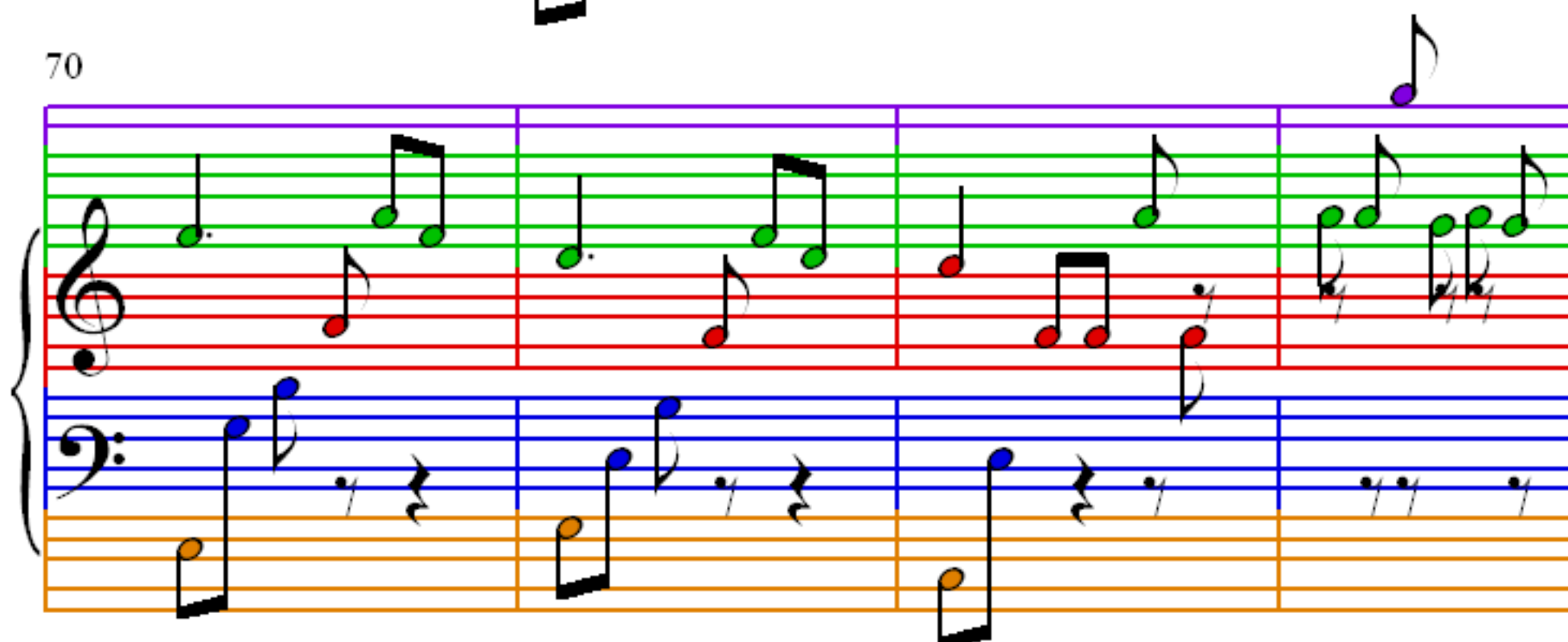
58

The image shows a musical score for the song 'The Rose Tree'. It consists of two staves: a treble staff (top) and a bass staff (bottom). The treble staff has a green line at the top and red lines for the rest of the staff. The bass staff has blue lines. The music is written in 4/4 time. The treble staff contains a melody of eighth and quarter notes, with some notes marked with a green dot. The bass staff contains a simple accompaniment of eighth and quarter notes, with some notes marked with a blue dot. The score is divided into four measures by vertical bar lines. The first measure starts with a treble clef and a key signature of one sharp (F#). The second measure starts with a bass clef and a key signature of one sharp (F#). The third measure starts with a treble clef and a key signature of one sharp (F#). The fourth measure starts with a bass clef and a key signature of one sharp (F#). The score is labeled with the number '58' in the top left corner.

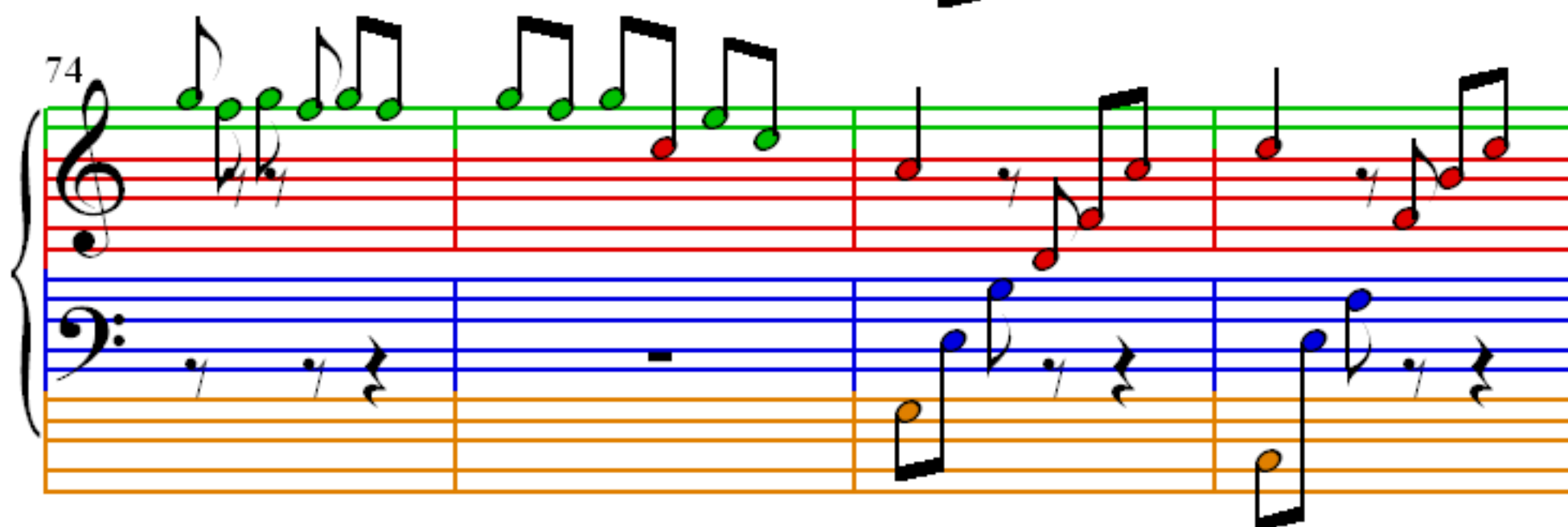
66



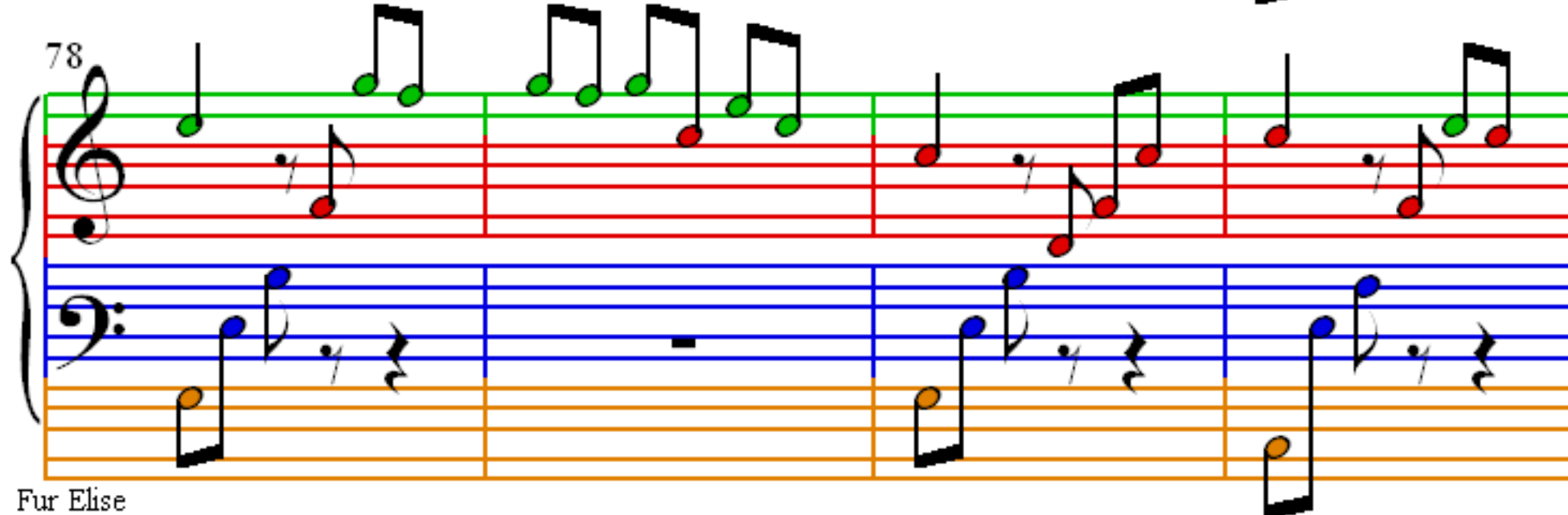
70



74



78



82

Measures 82-85 of the piano score for 'Fur Elise'. The right hand (treble clef) features a melody with a whole rest in measure 82, followed by eighth and quarter notes. The left hand (bass clef) plays a continuous eighth-note accompaniment. The staves are color-coded: green for the right hand and blue for the left hand.

86

Measures 86-89 of the piano score for 'Fur Elise'. The right hand continues the melody with eighth and quarter notes. The left hand maintains the eighth-note accompaniment. The staves are color-coded: green for the right hand and blue for the left hand.

90

Measures 90-93 of the piano score for 'Fur Elise'. The right hand features a melody with a whole rest in measure 90, followed by eighth and quarter notes. The left hand plays a continuous eighth-note accompaniment. The staves are color-coded: green for the right hand and blue for the left hand.

94

Measures 94-97 of the piano score for 'Fur Elise'. The right hand features a melody with a whole rest in measure 94, followed by eighth and quarter notes. The left hand plays a continuous eighth-note accompaniment. The staves are color-coded: green for the right hand and blue for the left hand.



98

Measures 98-101 of the musical score for 'Für Elise'. The system consists of a grand staff with a treble and bass clef, and two additional empty staves below. The treble staff contains a sequence of eighth and sixteenth notes, with some notes beamed together. The bass staff contains a sequence of eighth and sixteenth notes, with some notes beamed together. The notes are color-coded: red, blue, green, and purple. The system is divided into four measures by vertical bar lines.

102

Measures 102-105 of the musical score for 'Für Elise'. The system consists of a grand staff with a treble and bass clef, and two additional empty staves below. The treble staff contains a sequence of eighth and sixteenth notes, with some notes beamed together. The bass staff contains a sequence of eighth and sixteenth notes, with some notes beamed together. The notes are color-coded: red, blue, green, and purple. The system is divided into four measures by vertical bar lines.

106

Measures 106-109 of the musical score for 'Für Elise'. The system consists of a grand staff with a treble and bass clef, and two additional empty staves below. The treble staff contains a sequence of eighth and sixteenth notes, with some notes beamed together. The bass staff contains a sequence of eighth and sixteenth notes, with some notes beamed together. The notes are color-coded: red, blue, green, and purple. The system is divided into four measures by vertical bar lines.

111

Measures 111-115 of the piano piece 'Fur Elise'. The notation is presented in a grand staff with treble and bass clefs. The right hand (treble clef) features a melody of eighth and sixteenth notes, with some notes highlighted in green. The left hand (bass clef) provides a harmonic accompaniment with eighth and sixteenth notes, some highlighted in blue and orange. The background of the staves is color-coded: green for the right hand and blue/orange for the left hand.

116

Measures 116-119 of the piano piece 'Fur Elise'. The notation is presented in a grand staff with treble and bass clefs. The right hand (treble clef) features a melody of eighth and sixteenth notes, with some notes highlighted in green. The left hand (bass clef) provides a harmonic accompaniment with eighth and sixteenth notes, some highlighted in blue and orange. The background of the staves is color-coded: green for the right hand and blue/orange for the left hand.

120

Measures 120-123 of the piano piece 'Fur Elise'. The notation is presented in a grand staff with treble and bass clefs. The right hand (treble clef) features a melody of eighth and sixteenth notes, with some notes highlighted in green. The left hand (bass clef) provides a harmonic accompaniment with eighth and sixteenth notes, some highlighted in blue and orange. The background of the staves is color-coded: green for the right hand and blue/orange for the left hand.

124

Measures 124-126 of the piano piece 'Fur Elise'. The notation is presented in a grand staff with treble and bass clefs. The right hand (treble clef) features a melody of eighth and sixteenth notes, with some notes highlighted in green. The left hand (bass clef) provides a harmonic accompaniment with eighth and sixteenth notes, some highlighted in blue and orange. The background of the staves is color-coded: green for the right hand and blue/orange for the left hand.