

Flight of the Bumble Bee

Rimskij-Korsakov

1
♩ = 150

4

7

10

13

16

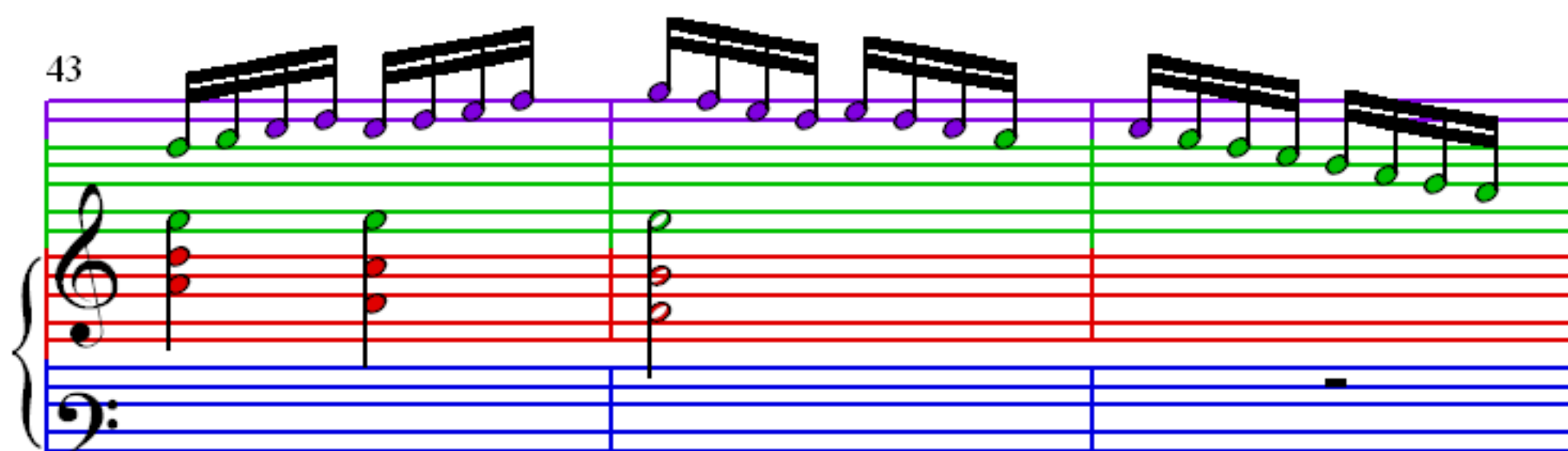
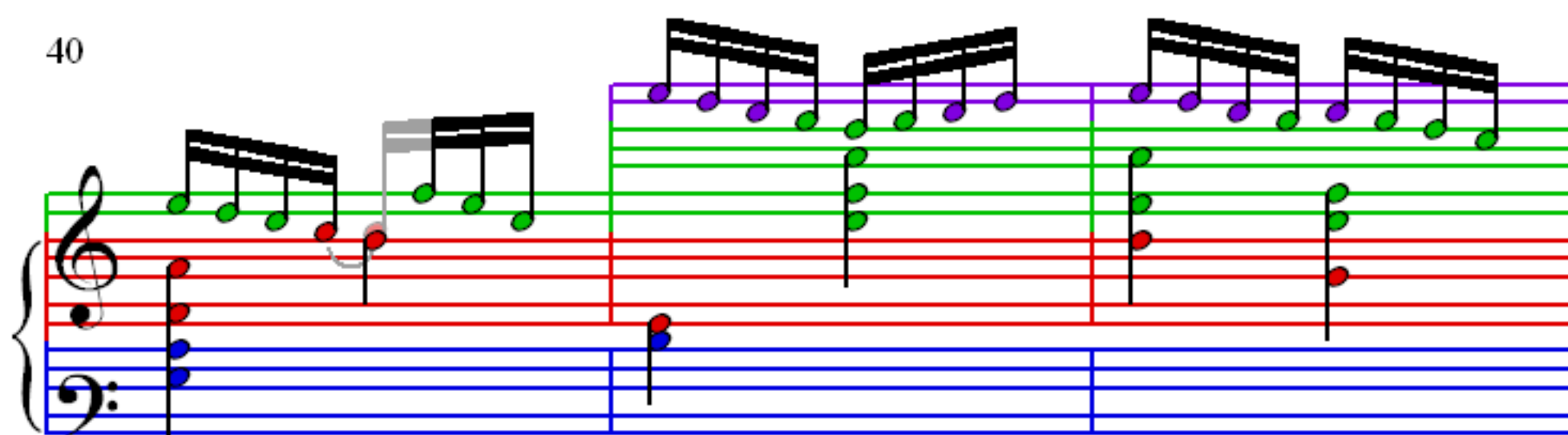
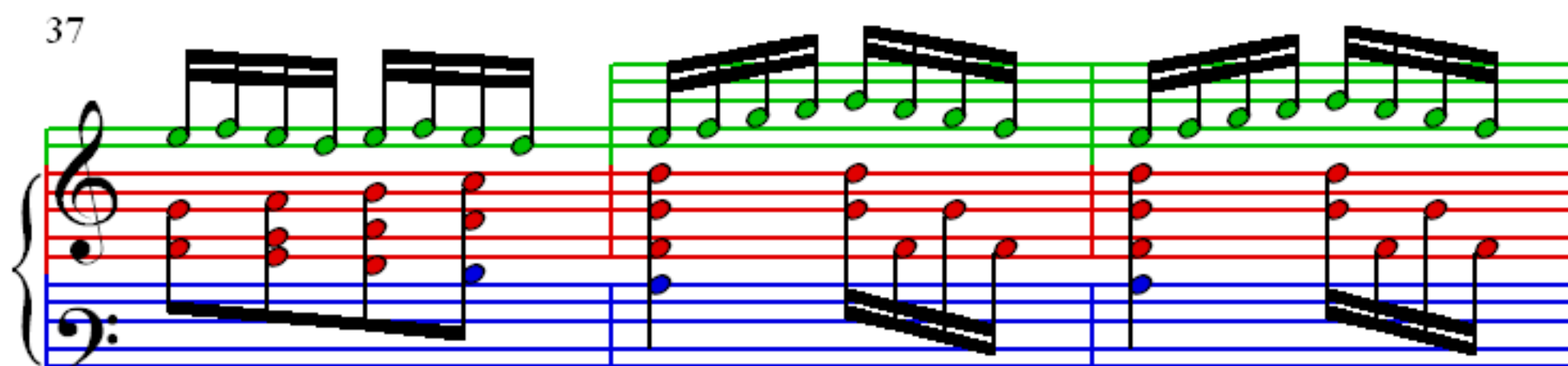
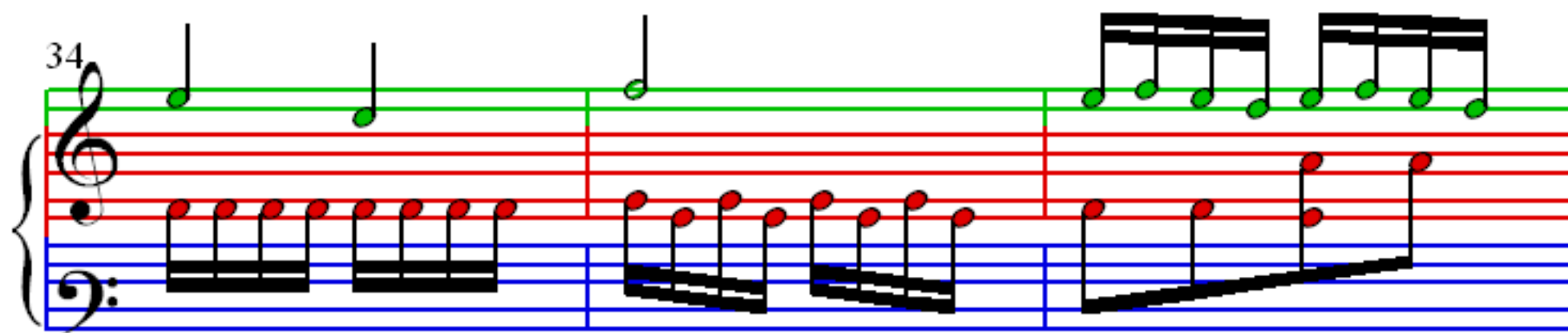
19

22

25

28

31



49

52

55

58

61

64

64

Measures 64-66 of the piece. The treble clef staff features a continuous eighth-note melody with a green highlight on the first measure of each system. The bass clef staff provides a harmonic accompaniment with chords and single notes, primarily in blue.

67

Measures 67-69. The treble clef staff continues the eighth-note melody. The bass clef staff accompaniment includes some red notes in the first measure of the second system.

70

Measures 70-72. The treble clef staff continues the eighth-note melody. The bass clef staff accompaniment features red notes in the first measure of the second system.

73

Measures 73-75. The treble clef staff continues the eighth-note melody, with a purple highlight on the final measure of the third system. The bass clef staff accompaniment includes a blue highlight on the final measure of the third system.

76

Measures 76-78 of the piece. The right hand plays a continuous eighth-note pattern. The left hand features a bass line with a descending eighth-note scale in measures 76 and 78, and a single note in measure 77.

79

Measures 79-81 of the piece. The right hand continues the eighth-note pattern. The left hand has a single note in measure 79, a descending eighth-note scale in measure 80, and a single note in measure 81.

82

Measures 82-85 of the piece. The right hand continues the eighth-note pattern. The left hand has a single note in measure 82, a descending eighth-note scale in measure 83, and a single note in measure 84. Measure 85 shows a single note in the left hand.

86

Measures 86-89 of the piece. The right hand continues the eighth-note pattern. The left hand has a single note in measure 86, a descending eighth-note scale in measure 87, and a single note in measure 88. Measure 89 shows a single note in the left hand.

90

Measures 90-93 of the piece. The treble clef staff features a continuous eighth-note melody with a green-to-red color gradient. The bass clef staff provides a simple accompaniment with blue notes. A yellow staff at the bottom contains a single yellow note in measure 90 and another in measure 93.

94

Measures 94-97. The treble clef staff continues the eighth-note melody with a green-to-red color gradient. The bass clef staff is mostly empty, with a few scattered notes. A yellow staff at the bottom contains a single yellow note in measure 97.

98

Measures 98-101. The treble clef staff features a continuous eighth-note melody with a green-to-red color gradient. The bass clef staff provides a simple accompaniment with blue notes. A yellow staff at the bottom contains a single yellow note in measure 98 and another in measure 101.