

# My All

Maria Carey

$\bullet = 90$   
1

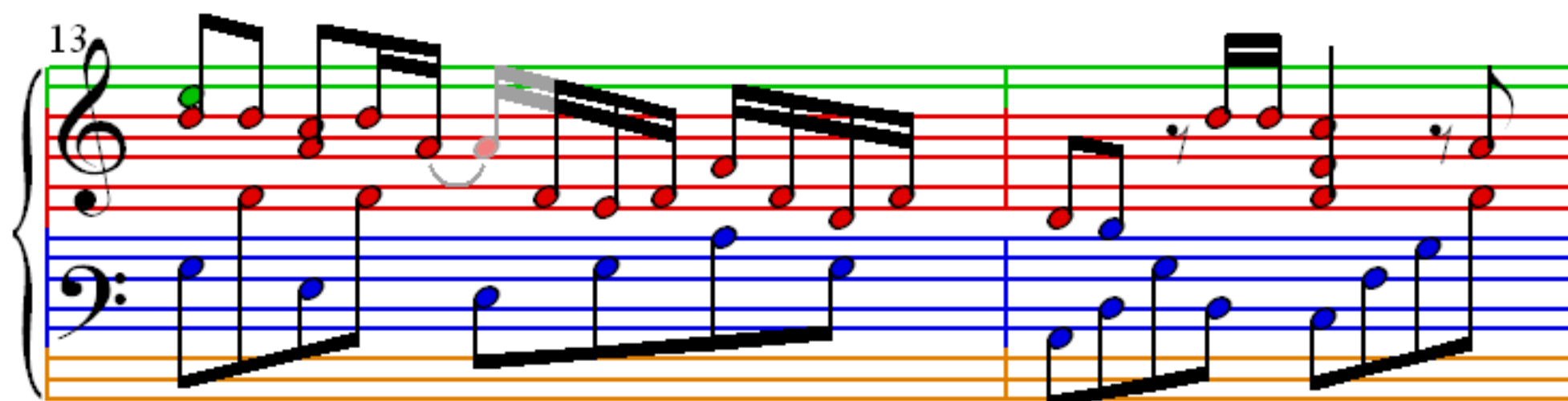
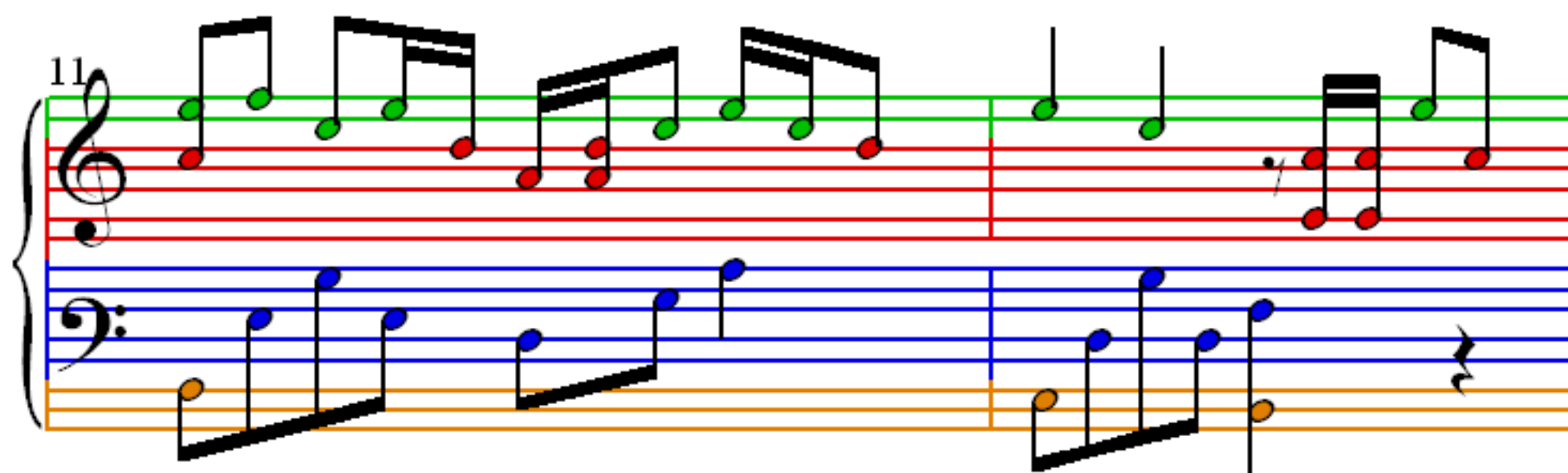
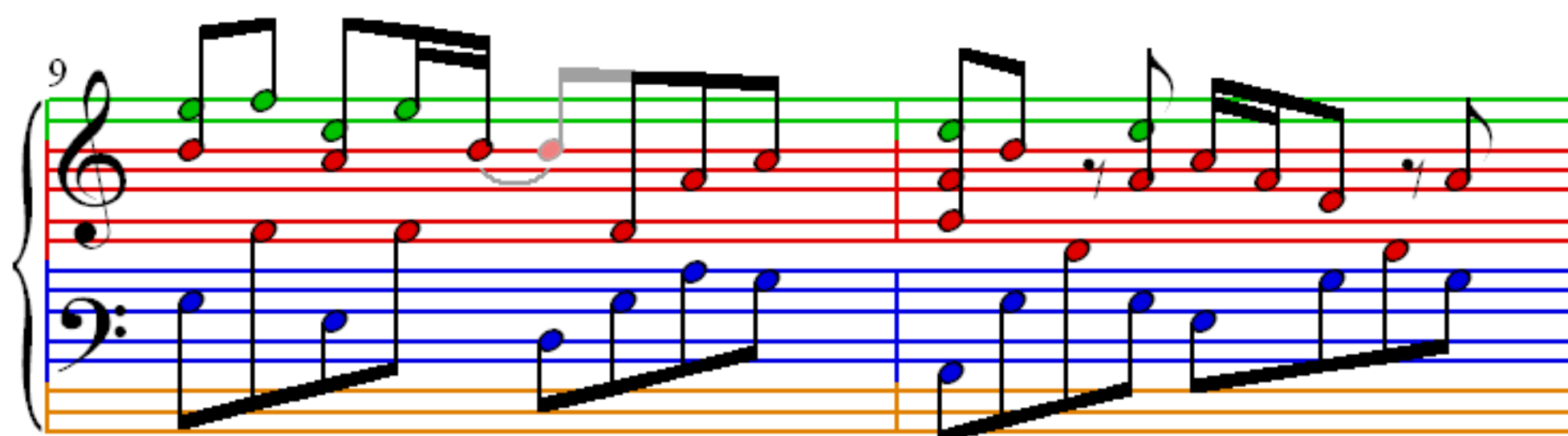
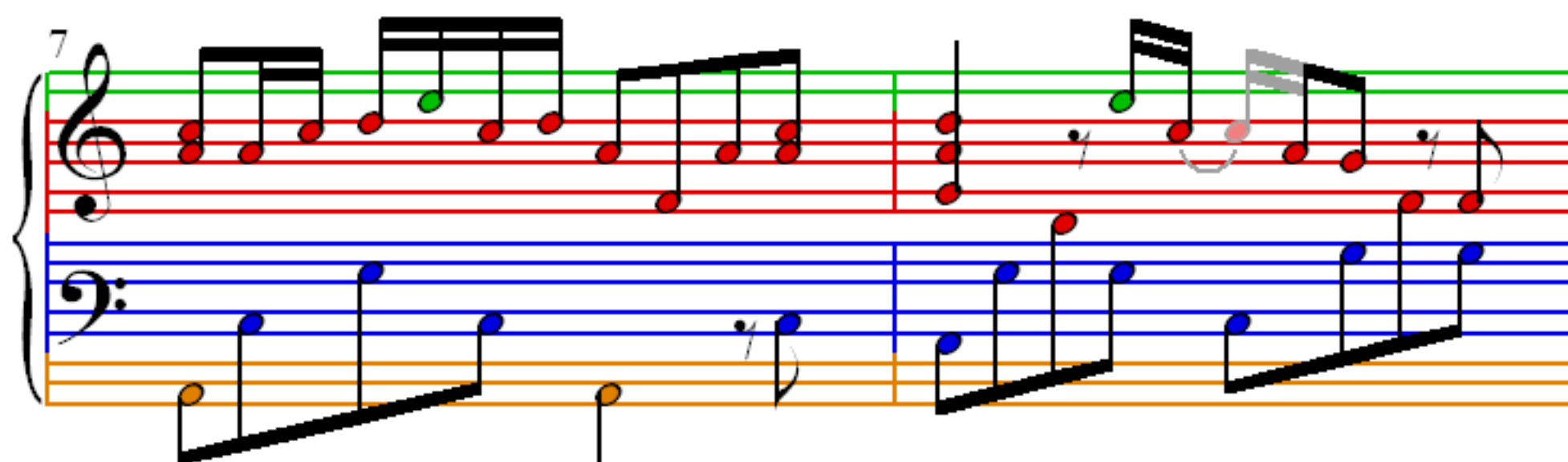
Measures 1-2 of the piano accompaniment for 'My All'. The music is in 4/4 time, marked *mp* (mezzo-piano). The treble clef staff contains a melody of eighth and quarter notes, while the bass clef staff provides a simple harmonic accompaniment. The notes are color-coded: red for the melody and blue for the accompaniment. A repeat sign is present at the end of measure 2.

3

Measures 3-4 of the piano accompaniment. The melody continues with eighth and quarter notes, and the accompaniment remains simple. The notes are color-coded: red for the melody and blue for the accompaniment. A repeat sign is present at the end of measure 4.

5

Measures 5-6 of the piano accompaniment. The melody continues with eighth and quarter notes, and the accompaniment remains simple. The notes are color-coded: red for the melody and blue for the accompaniment. A repeat sign is present at the end of measure 6.



15

Measures 15 and 16. The treble clef staff contains eighth-note chords and a repeat sign. The bass clef staff contains a whole note chord and a repeat sign. A third staff shows a whole note chord.

17

Measures 17 and 18. The treble clef staff contains eighth-note chords and a repeat sign. The bass clef staff contains a whole note chord and a repeat sign. A third staff shows a whole note chord.

19

Measures 19 and 20. The treble clef staff contains eighth-note chords and a repeat sign. The bass clef staff contains a whole note chord and a repeat sign. A third staff shows a whole note chord.

21

Measures 21 and 22. The treble clef staff contains eighth-note chords and a repeat sign. The bass clef staff contains a whole note chord and a repeat sign. A third staff shows a whole note chord.

