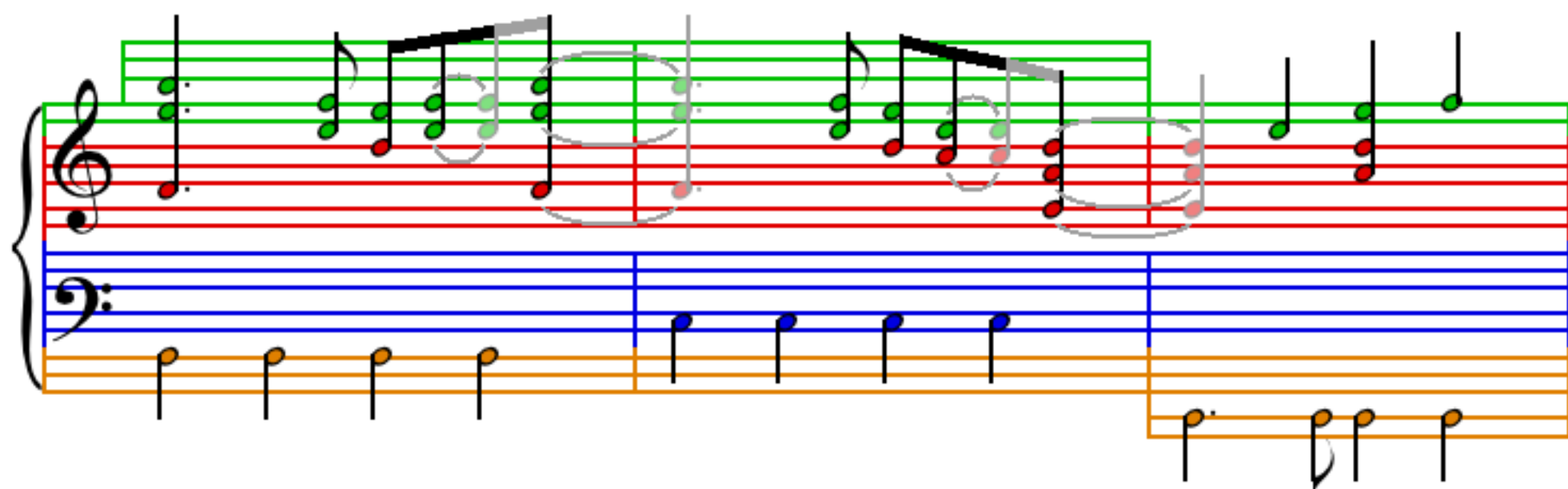
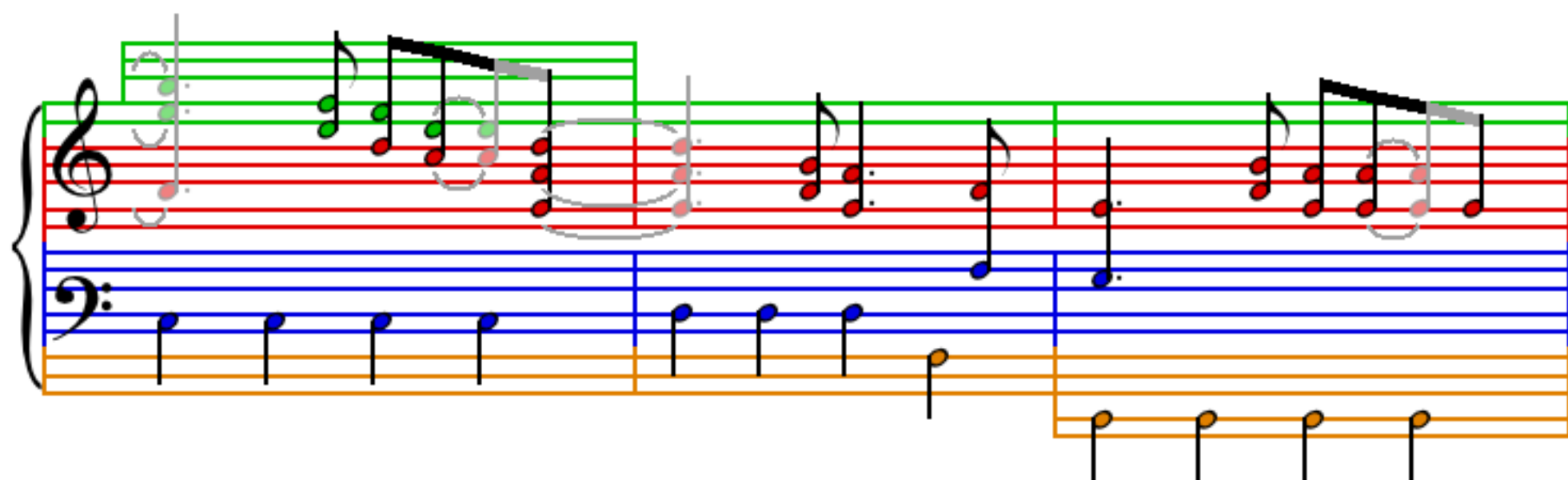
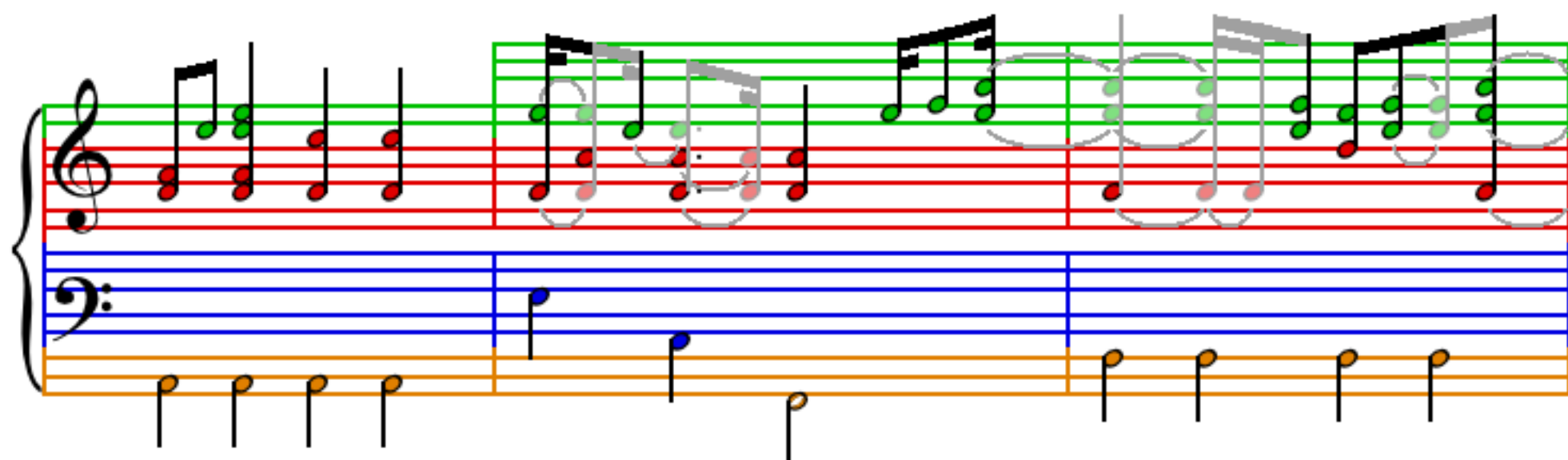


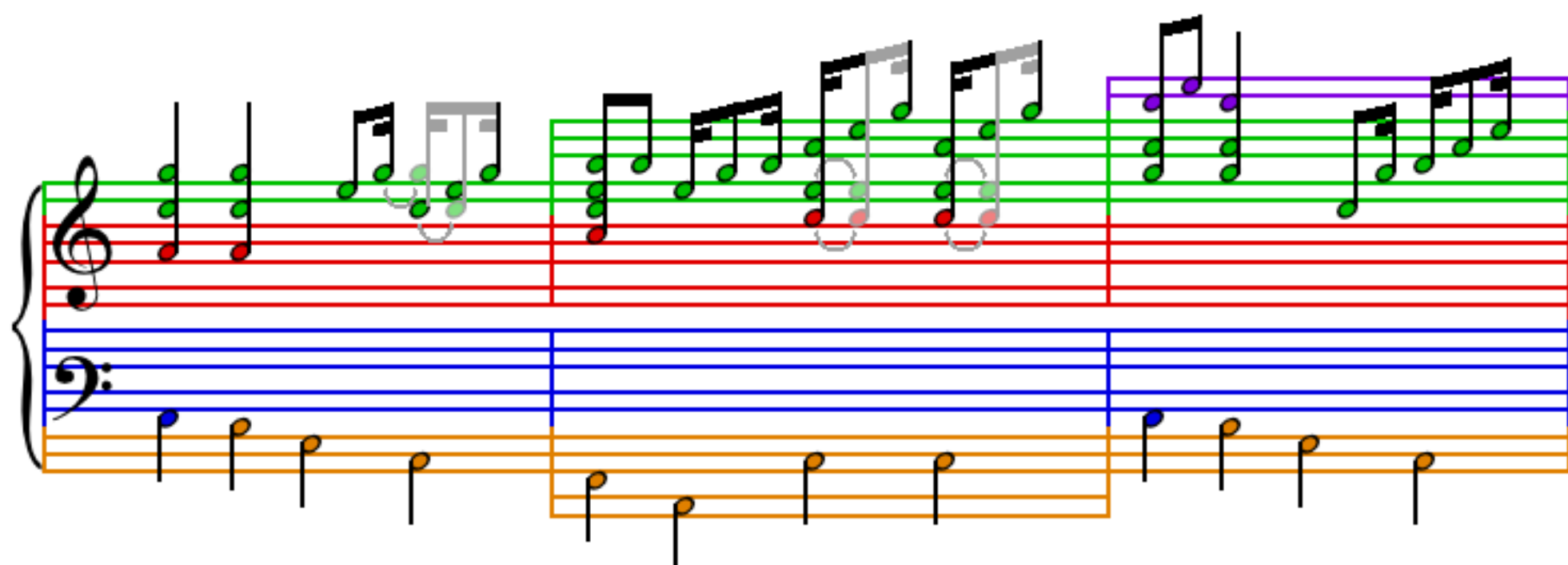
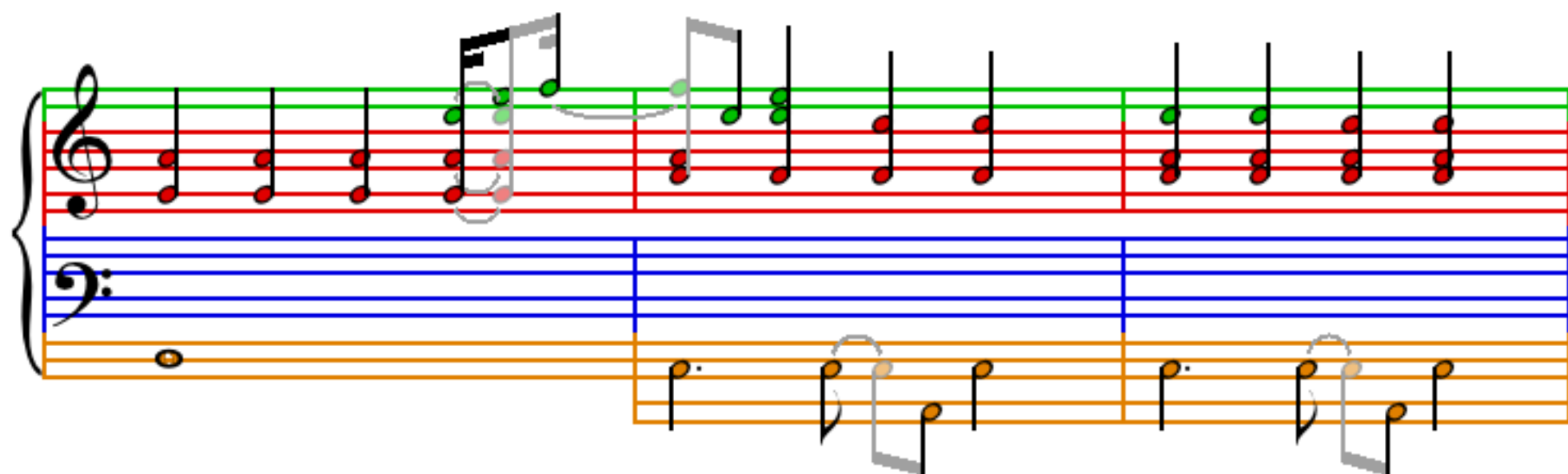
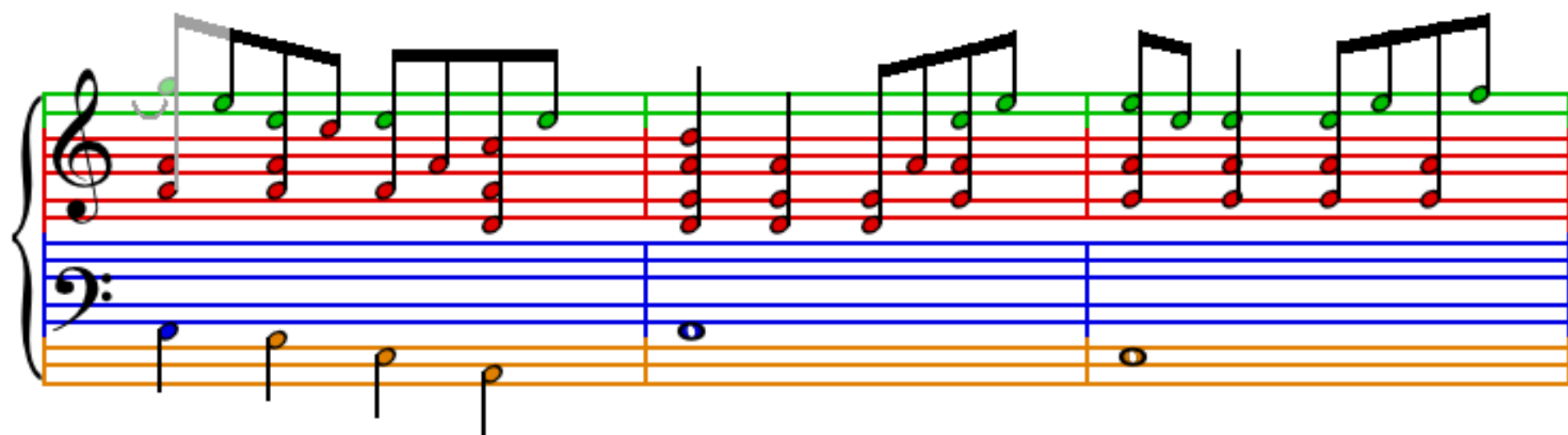
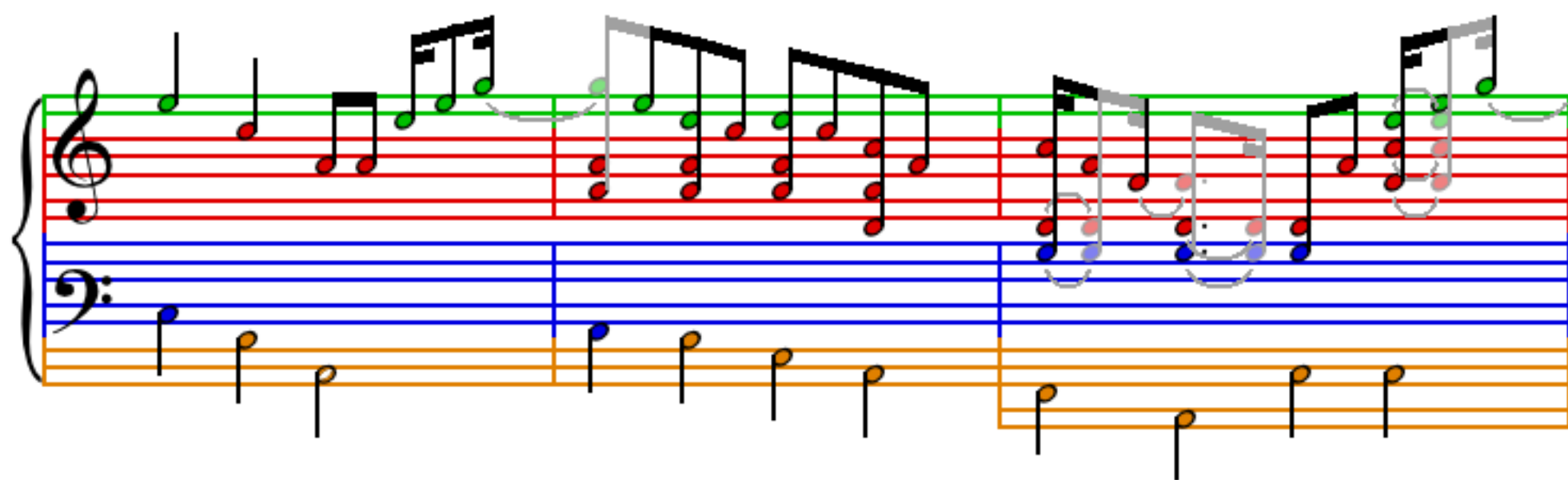
Penny Lane

The Beatles

$\text{♩} = 101$

The musical score for 'Penny Lane' is presented in four systems, each with a grand staff (treble and bass clefs). The key signature is one flat (B-flat major or D minor), and the time signature is 4/4. The tempo is marked as 101 beats per minute. The notation includes various musical symbols such as eighth notes, sixteenth notes, and rests, with some notes highlighted in green and others in red. The bass line is primarily composed of eighth notes, while the treble line features more complex rhythmic patterns, including sixteenth notes and eighth notes. The score is written in a standard musical notation format, with a large brace on the left side of each system indicating the grand staff.





A musical score for the song 'The Rose Tree'. It features three staves: a treble staff with a green treble clef, a blue bass staff with a blue bass clef, and an orange staff with an orange clef. The treble staff contains a melody of eighth and sixteenth notes, with some notes highlighted in green. The bass staff contains a simple bass line with blue notes. The orange staff contains a simple bass line with orange notes. The score is divided into four measures by vertical bar lines.

A musical score for the song 'The Rose Tree'. It features three staves: a treble staff with a green line, a red staff, and a blue staff. The treble staff contains a melody of eighth and sixteenth notes, with some notes highlighted in green. The red staff contains a bass line of eighth and sixteenth notes, with some notes highlighted in red. The blue staff contains a bass line of eighth and sixteenth notes, with some notes highlighted in blue. The score is divided into four measures by vertical bar lines. The first measure contains a treble staff with a melody, a red staff with a bass line, and a blue staff with a bass line. The second measure contains a treble staff with a melody, a red staff with a bass line, and a blue staff with a bass line. The third measure contains a treble staff with a melody, a red staff with a bass line, and a blue staff with a bass line. The fourth measure contains a treble staff with a melody, a red staff with a bass line, and a blue staff with a bass line. The score is written in a simple, stylized font.

A musical score for the song 'The Rose Tree'. It features a treble clef staff with a key signature of one sharp (F#) and a 2/4 time signature. The melody is written in a simple, folk-like style. The bass clef staff provides a simple harmonic accompaniment. The score is divided into four measures by vertical bar lines. The first measure contains a whole note chord in the treble and a whole note in the bass. The second measure contains a half note chord in the treble and a half note in the bass. The third measure contains a half note chord in the treble and a half note in the bass. The fourth measure contains a half note chord in the treble and a half note in the bass. The notes are color-coded: red for the first measure, green for the second, blue for the third, and orange for the fourth.

