

Mary's Boy Child

Johnny Mathis

$\bullet = 100$

1

Measures 1-3 of the piano accompaniment for 'Mary's Boy Child'. The music is in 4/4 time, with a tempo of 100. The key signature has two flats (B-flat and E-flat). The notation is presented on a grand staff with five systems: Treble (red), Bass (blue), and three additional staves (orange, yellow, and pink) below the Bass staff. Measure 1 features a treble staff with a whole note chord (F4, A4, C5) and a bass staff with a whole note chord (B2, D3, F3). Measure 2 continues with similar chords. Measure 3 shows a treble staff with a whole note chord (F4, A4, C5) and a bass staff with a whole note chord (B2, D3, F3). The notation includes various musical symbols such as notes, rests, and bar lines.

4

Measures 4-6 of the piano accompaniment. Measure 4 features a treble staff with a whole note chord (F4, A4, C5) and a bass staff with a whole note chord (B2, D3, F3). Measure 5 continues with similar chords. Measure 6 shows a treble staff with a whole note chord (F4, A4, C5) and a bass staff with a whole note chord (B2, D3, F3). The notation includes various musical symbols such as notes, rests, and bar lines.

7

Measures 7-9 of the piano accompaniment. Measure 7 features a treble staff with a whole note chord (F4, A4, C5) and a bass staff with a whole note chord (B2, D3, F3). Measure 8 continues with similar chords. Measure 9 shows a treble staff with a whole note chord (F4, A4, C5) and a bass staff with a whole note chord (B2, D3, F3). The notation includes various musical symbols such as notes, rests, and bar lines.

10

This system contains measures 10, 11, and 12. The treble clef staff (red lines) features a melody with eighth and quarter notes, some marked with green dots. The bass clef staff (blue lines) provides a harmonic accompaniment with eighth and quarter notes. A third staff (orange lines) contains a bass line with eighth and quarter notes, some marked with orange dots. A fourth staff (pink lines) contains a bass line with eighth and quarter notes, some marked with pink dots. Measure 10 includes a grey bracketed section in the treble staff and a grey bracketed section in the pink staff. Measure 11 includes a green bracketed section in the treble staff. Measure 12 includes a grey bracketed section in the treble staff and a grey bracketed section in the pink staff.

13

This system contains measures 13, 14, and 15. The treble clef staff (red lines) features a melody with eighth and quarter notes, some marked with green dots. The bass clef staff (blue lines) provides a harmonic accompaniment with eighth and quarter notes. A third staff (orange lines) contains a bass line with eighth and quarter notes, some marked with orange dots. A fourth staff (pink lines) contains a bass line with eighth and quarter notes, some marked with pink dots. Measure 13 includes a green bracketed section in the treble staff. Measure 14 includes a green bracketed section in the treble staff. Measure 15 includes a green bracketed section in the treble staff.

16

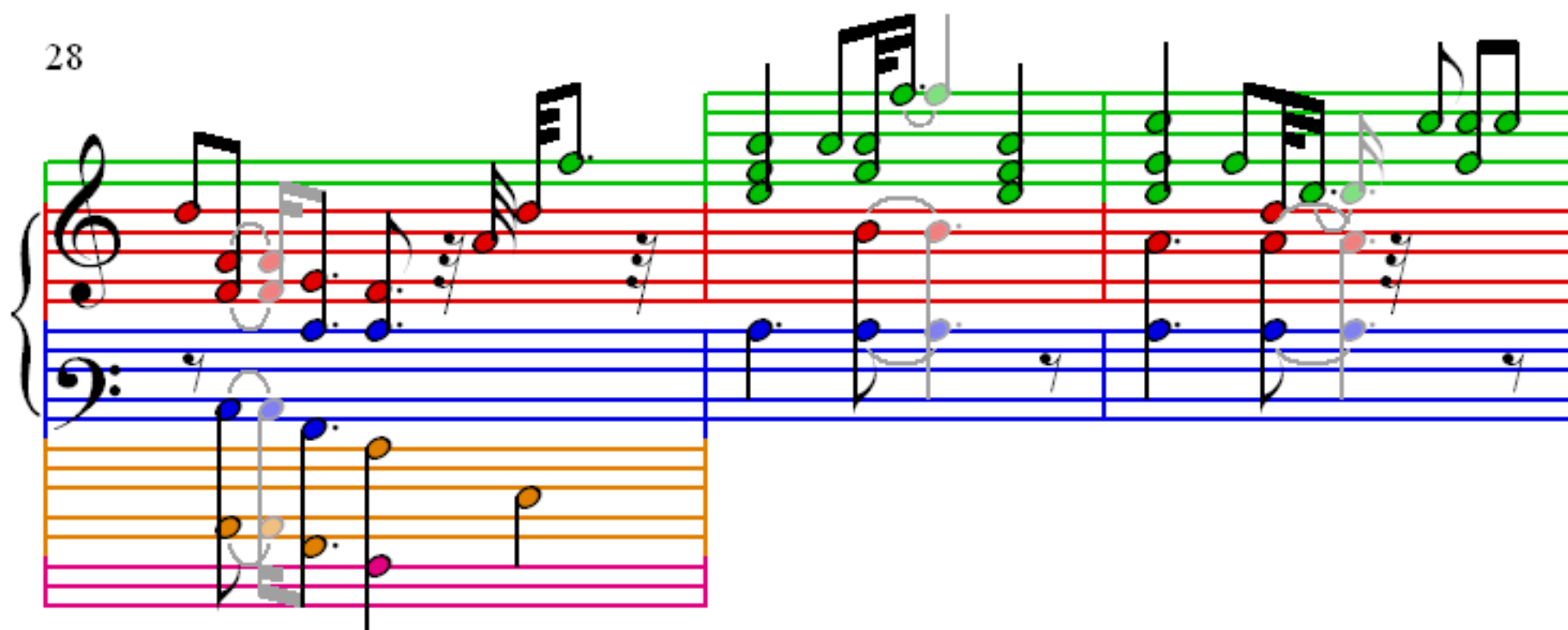
This system contains measures 16, 17, and 18. The treble clef staff (red lines) features a melody with eighth and quarter notes, some marked with green dots. The bass clef staff (blue lines) provides a harmonic accompaniment with eighth and quarter notes. A third staff (orange lines) contains a bass line with eighth and quarter notes, some marked with orange dots. A fourth staff (pink lines) contains a bass line with eighth and quarter notes, some marked with pink dots. Measure 16 includes a grey bracketed section in the treble staff and a grey bracketed section in the pink staff. Measure 17 includes a green bracketed section in the treble staff. Measure 18 includes a grey bracketed section in the treble staff and a grey bracketed section in the pink staff.

19

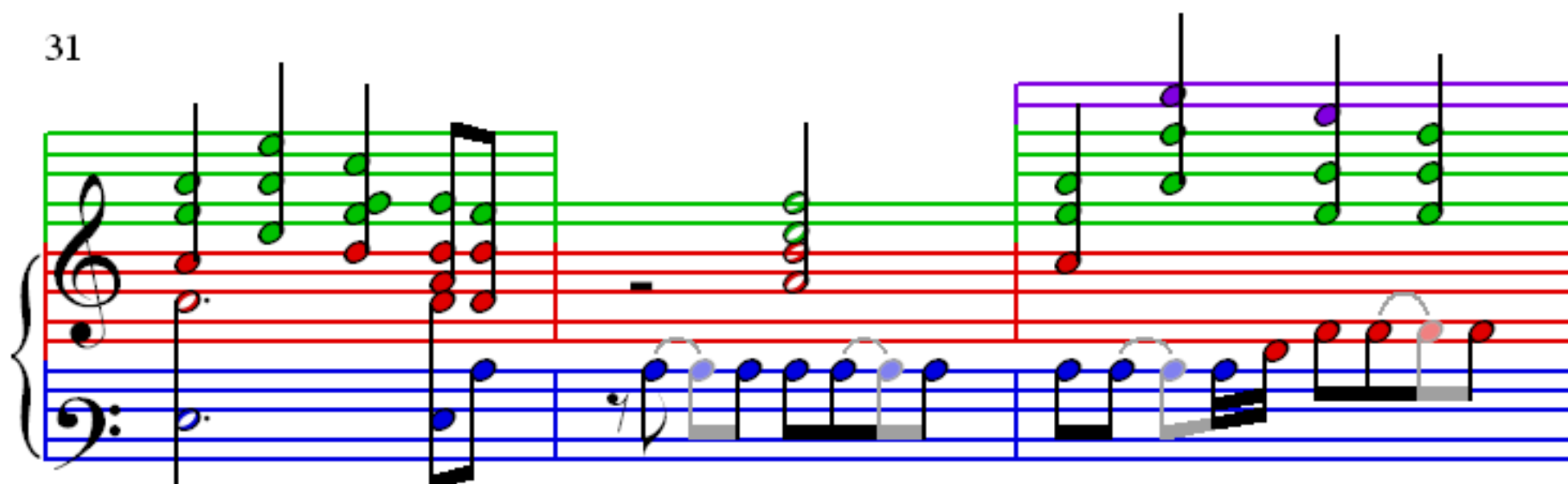
22

25

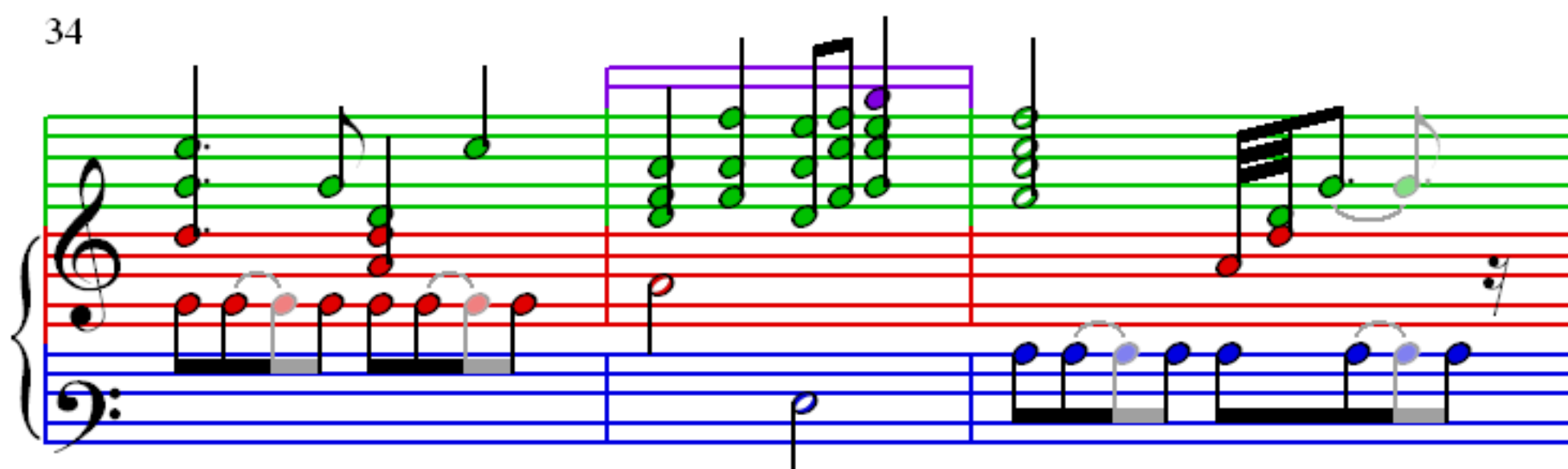
28



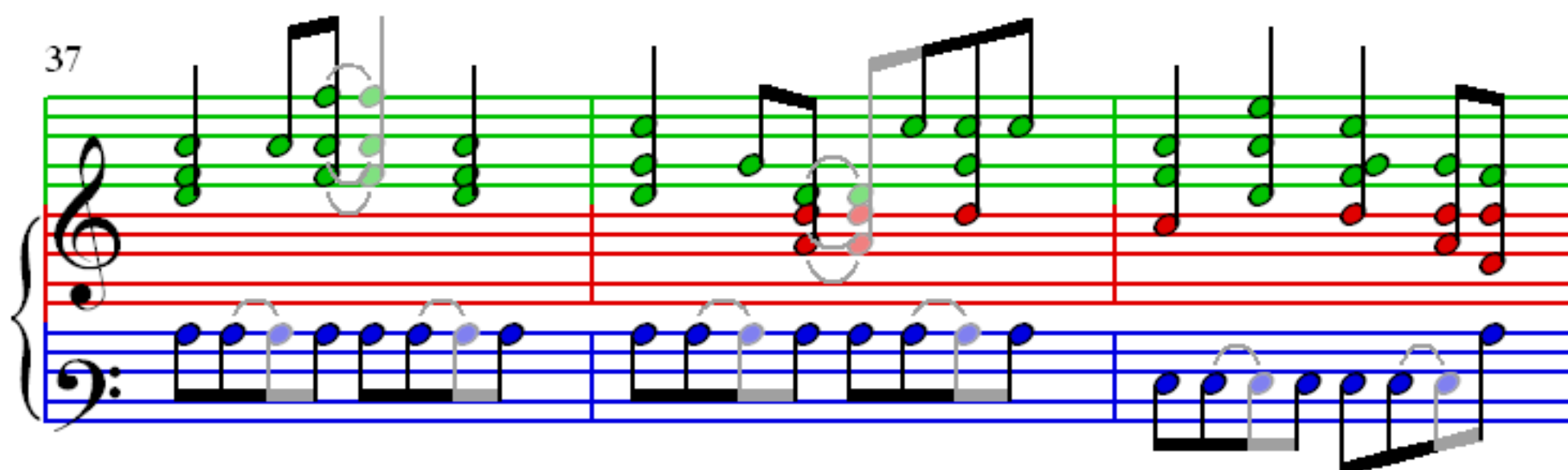
31



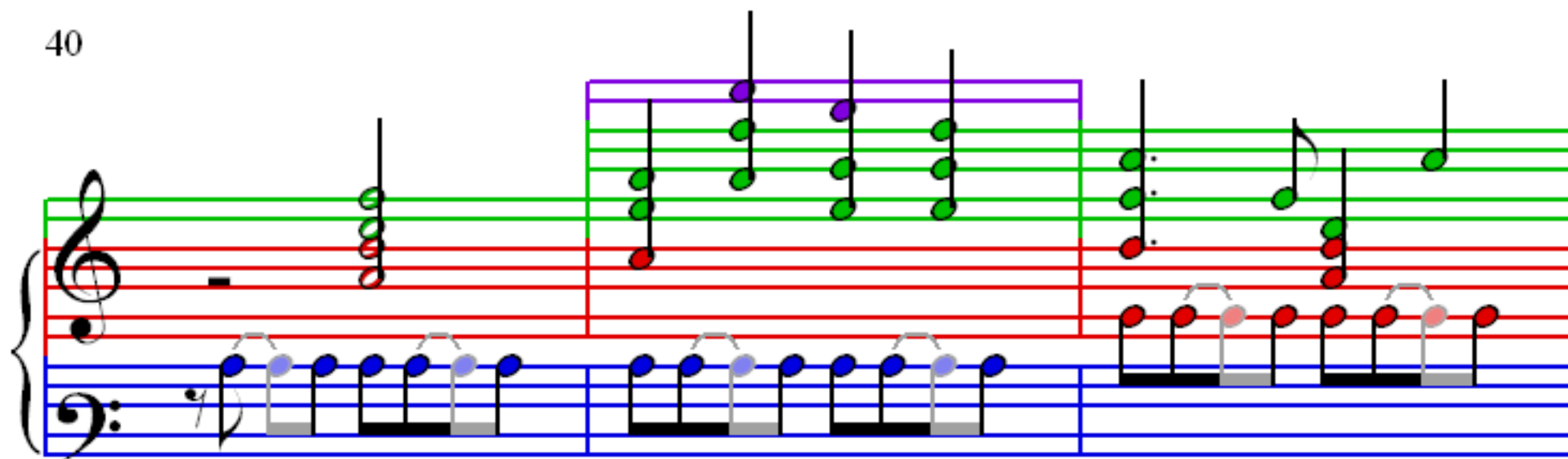
34



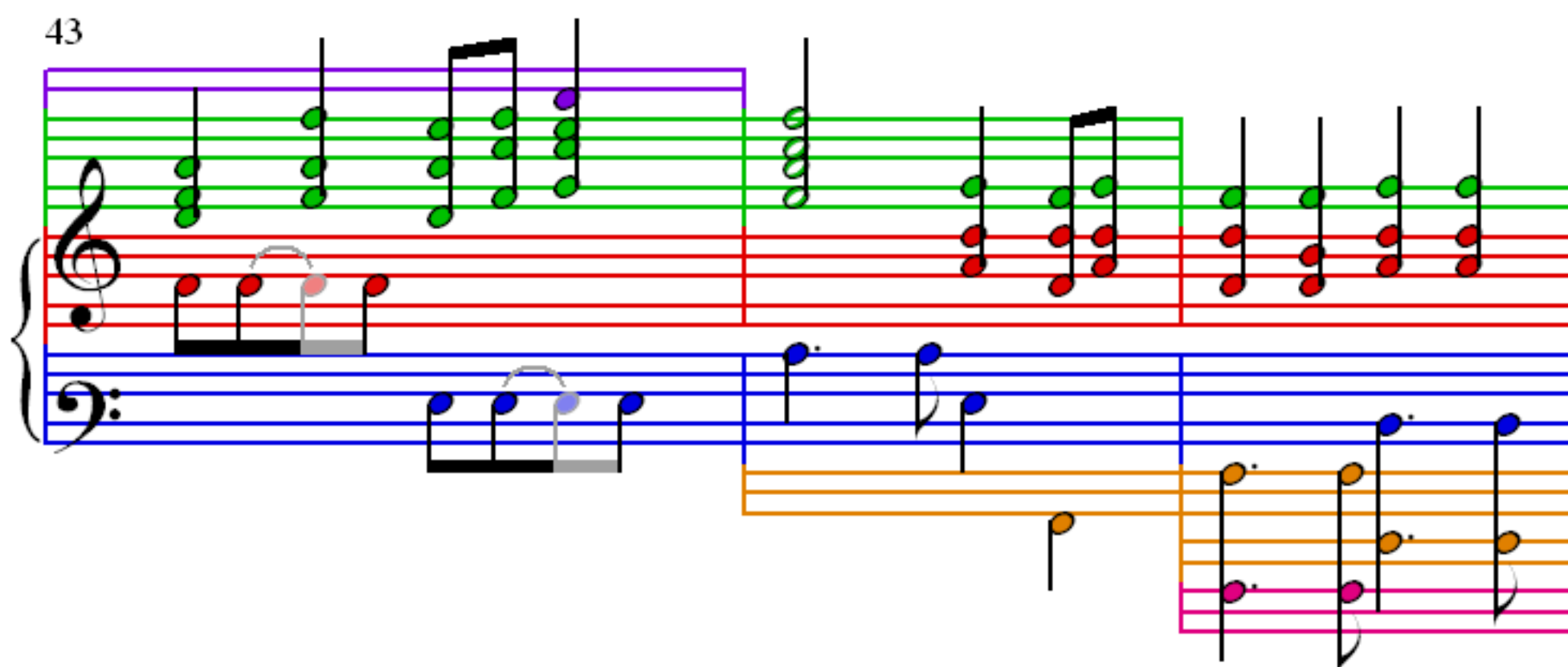
37



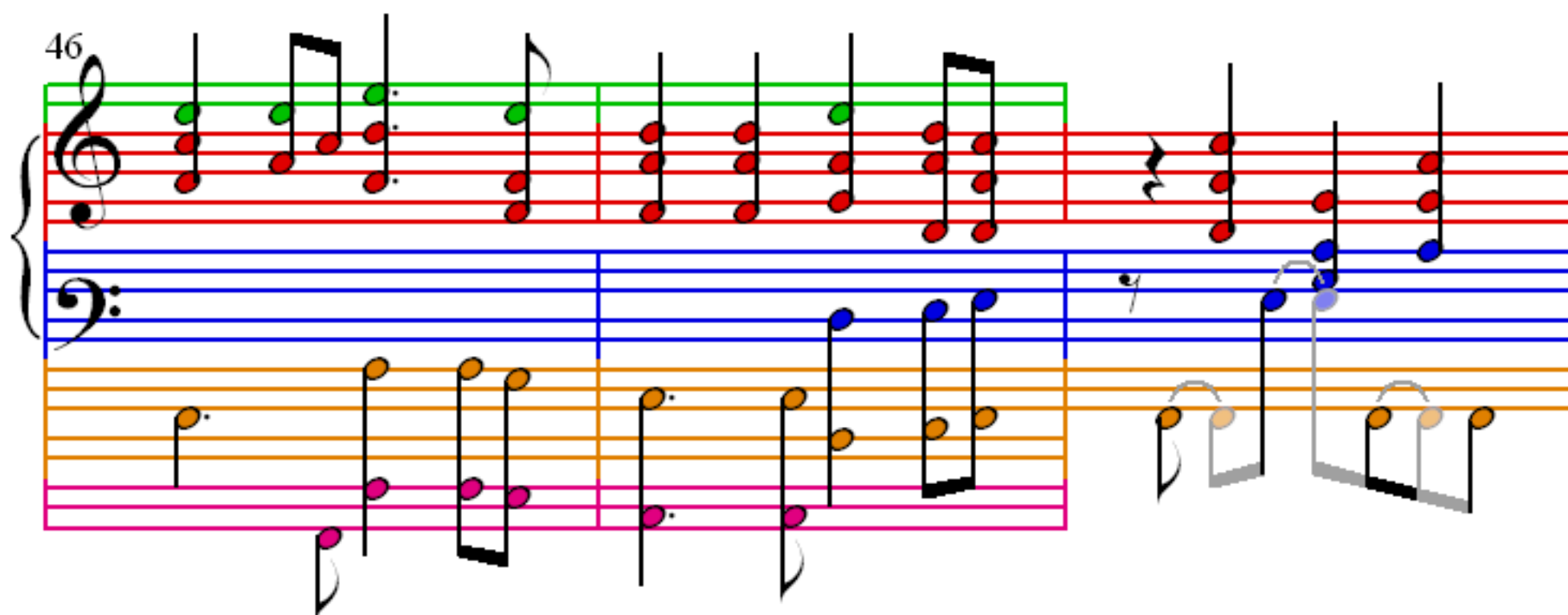
40



43



46



49

52

55

58

61

64