

# Eden Is A Magic World

Paul de Senneville

♩ = 80

1

2

3

6

1 2

3 4

5

8

10

12

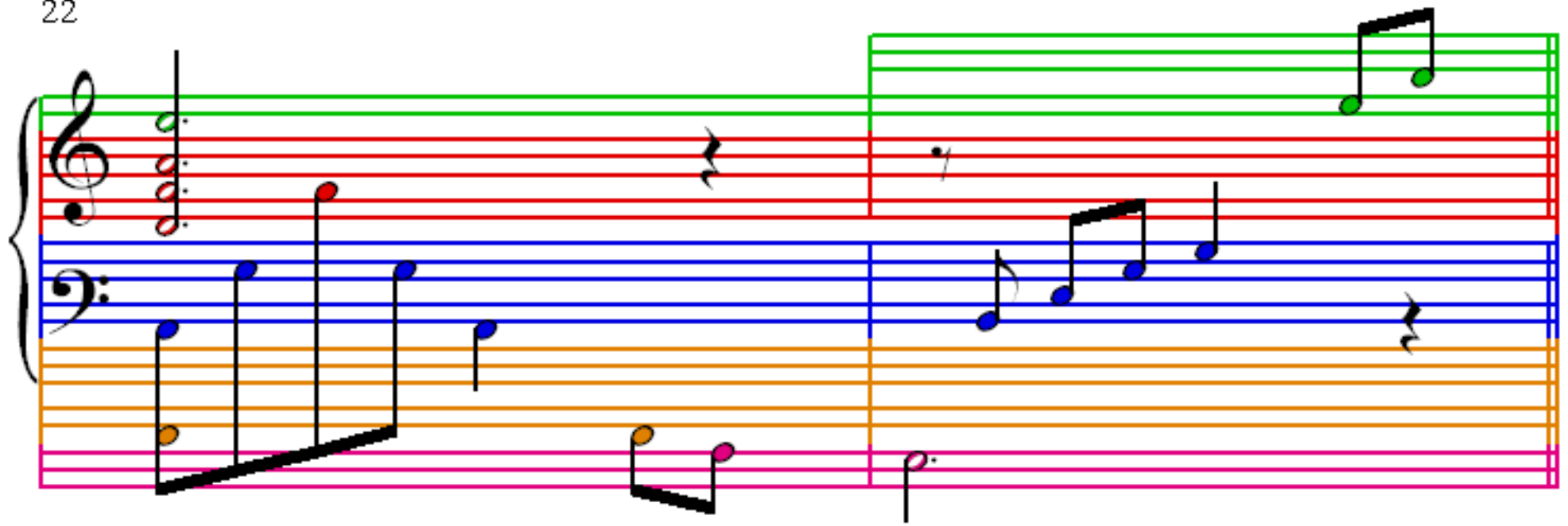
14

A musical score for the song "The Rose Tree". The score is written for piano (p) and features a treble and bass clef. The melody is in the treble clef, and the bass line is in the bass clef. The key signature is one flat (B-flat), and the time signature is 4/4. The score is divided into two systems. The first system contains measures 1 through 8, and the second system contains measures 9 through 16. The melody is composed of eighth and quarter notes, with some measures containing beamed eighth notes. The bass line consists of a steady eighth-note accompaniment. The score is color-coded: the treble staff has a purple background, the bass staff has a blue background, and the piano part has an orange background. The notes are color-coded to match the background: purple for the treble, blue for the bass, and orange for the piano. The score is numbered 16 in the top left corner.

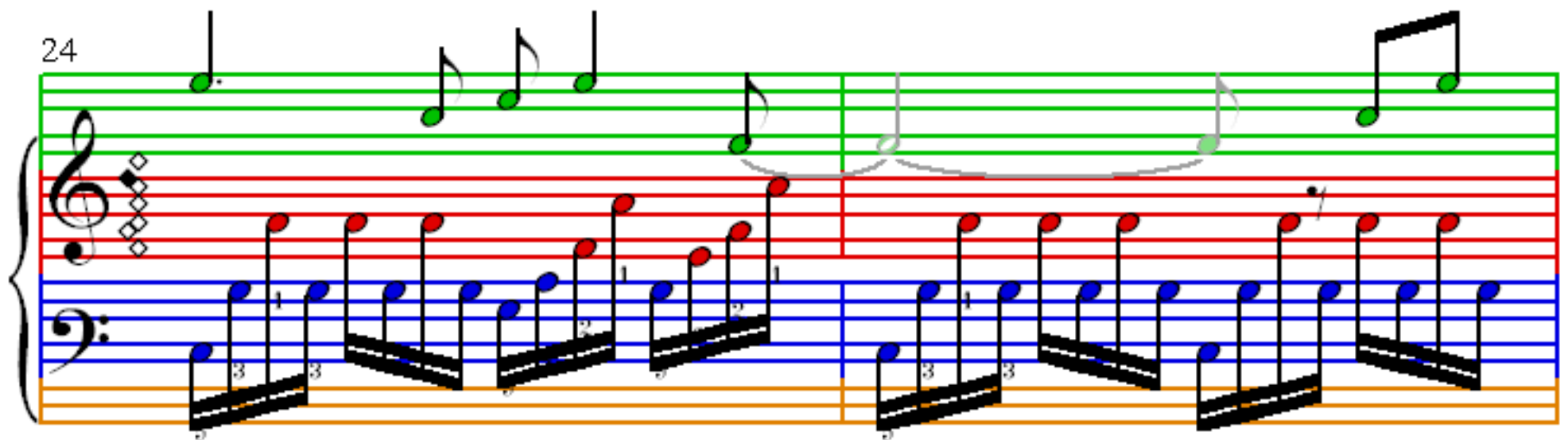
A musical score for the song "The Rose Tree". The score is written for a piano, with a treble and bass staff. The key signature is one flat (B-flat major or D minor). The time signature is 3/4. The score is divided into two systems. The first system starts at measure 18. The second system starts at measure 21. The score includes various musical notations such as notes, rests, and bar lines. The notes are color-coded: purple for the treble staff, red for the bass staff, and blue for the bass staff. The score is presented in a simplified, educational style.

A musical score for the song 'The Rose Tree'. The score is written for voice and piano. The voice part is on a single staff with a treble clef. The piano accompaniment is on two staves: the right hand on a treble clef staff and the left hand on a bass clef staff. The key signature has one flat (B-flat), and the time signature is 4/4. The score is divided into three measures. The first measure contains the first line of the song, the second measure contains the second line, and the third measure contains the third line. The piano accompaniment consists of a simple melody in the right hand and a bass line in the left hand. The notes are color-coded: green for the voice, red for the piano right hand, and blue for the piano left hand. The score is numbered 20 in the top left corner.

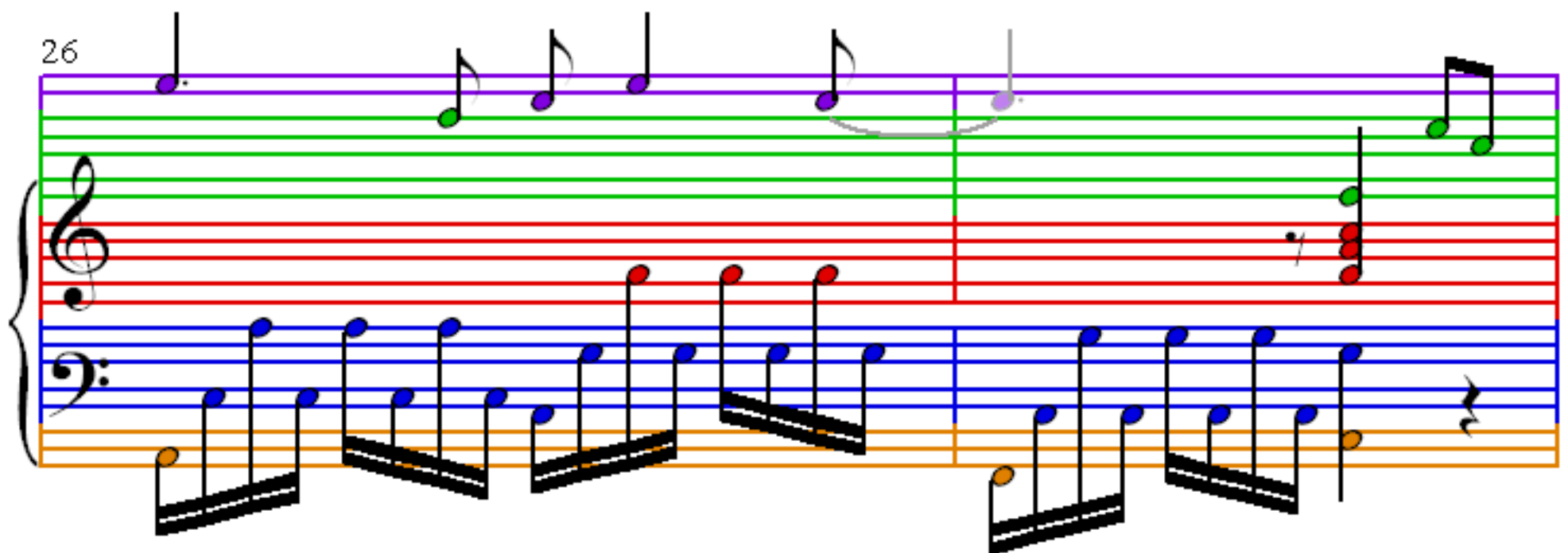
22



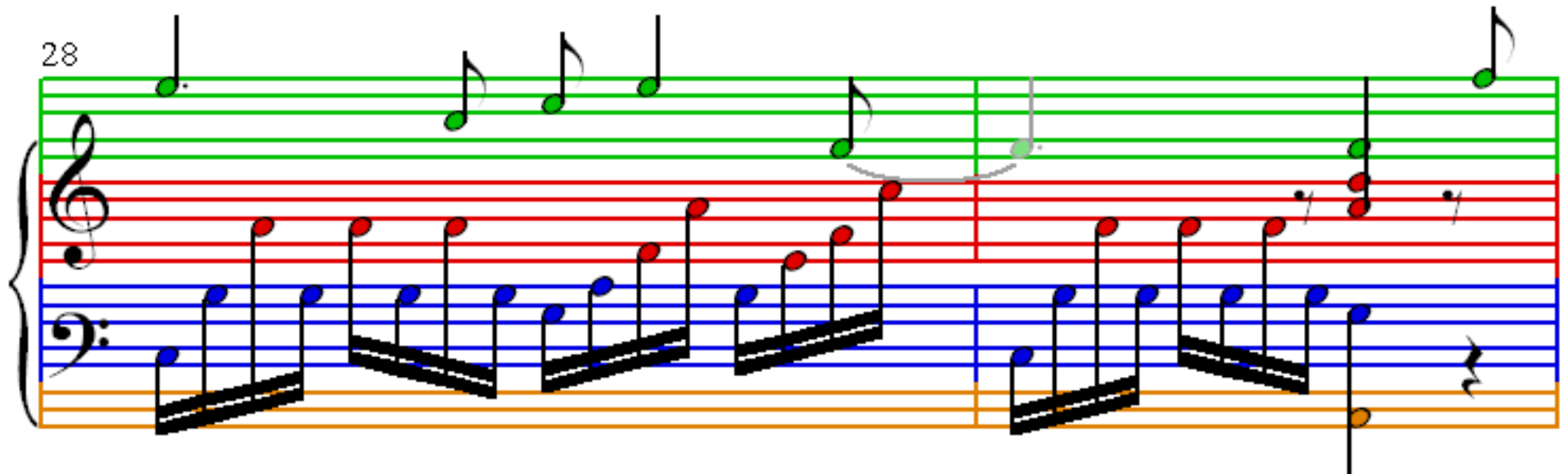
24



26



28





36

3

38

2 3 1 2 3 1 2 1

2 3 1 2 3 1 3 4

40

5

3

1

3

5

42

44

46