

# The Boxer

Simon and Garfunkel

The image displays a piano accompaniment for the song "The Boxer" by Simon and Garfunkel. The score is written in 4/4 time and consists of four systems of music, each spanning four measures. The notation is presented on grand staves, with the treble clef staff in red and the bass clef staff in blue. The notes are color-coded: red for the treble staff and blue for the bass staff. The first system begins with a treble clef and a 4/4 time signature. The second system starts at measure 5. The third system starts at measure 9. The fourth system starts at measure 13. The music features a steady, rhythmic pattern in the bass line, often using eighth notes, and a more melodic line in the treble, which includes some slurs and ties. The overall style is simple and clear, typical of a teaching or reference score.

17

21

25

29

33

37

Measures 37-40. Treble clef has red notes, bass clef has blue notes, and a lower staff has orange notes. Measure 39 has a circled chord in the treble.

41

Measures 41-44. Treble clef has red notes, bass clef has blue notes, and a lower staff has orange notes. Measure 44 has a circled chord in the treble.

45

Measures 45-48. Treble clef has red notes, bass clef has blue notes, and a lower staff has orange notes. Measures 45 and 48 have circled chords in the treble.

49

Measures 49-52. Treble clef has red notes, bass clef has blue notes, and a lower staff has orange notes. Measures 49, 50, 51, and 52 have circled chords in the treble.

53

Measures 53-56. Treble clef has red notes, bass clef has blue notes, and a lower staff has orange notes. Measures 53 and 54 have circled chords in the treble.

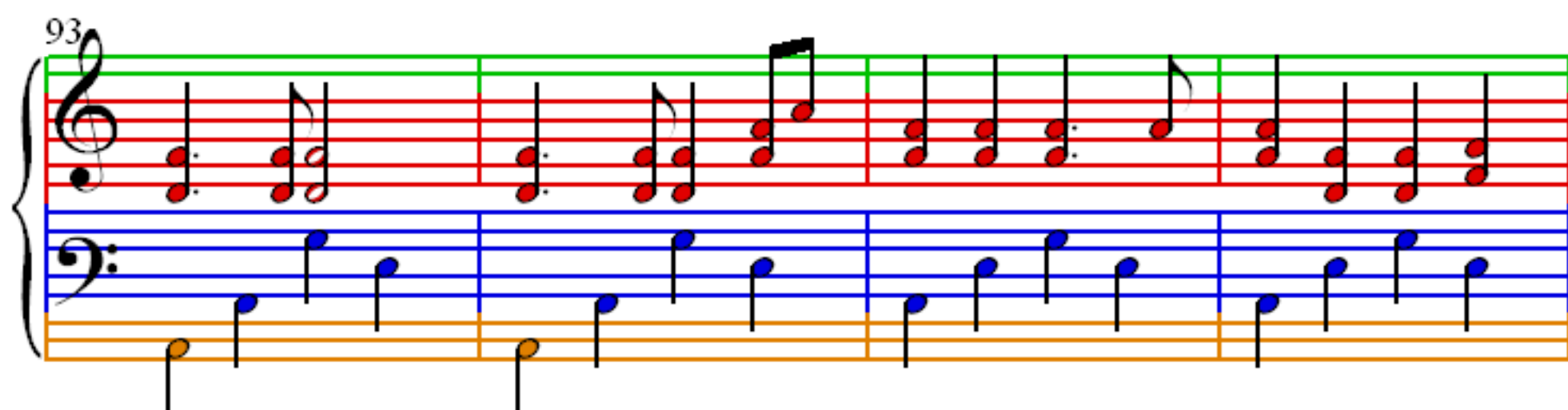
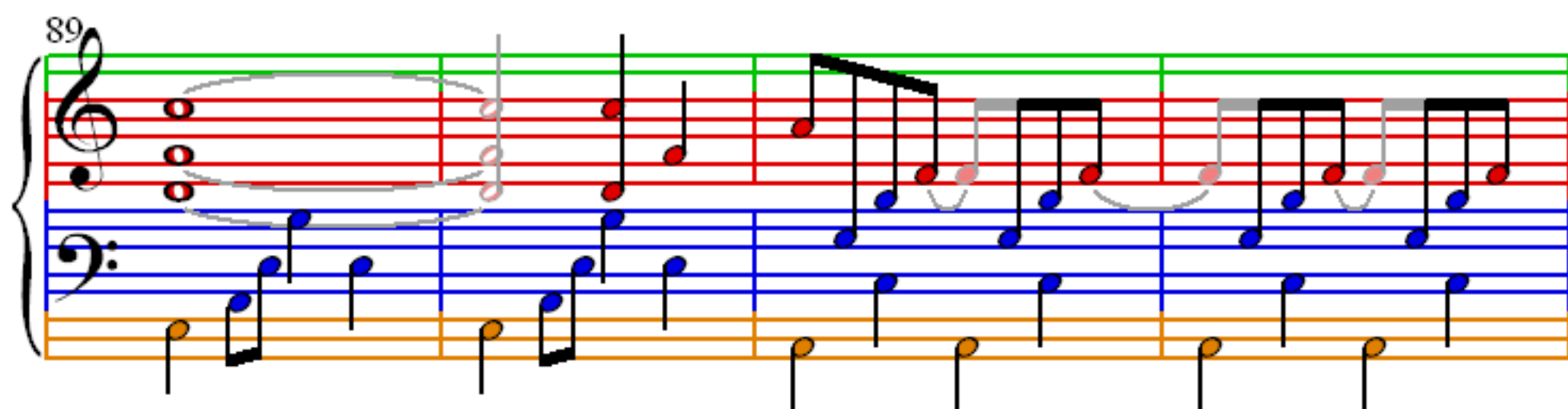
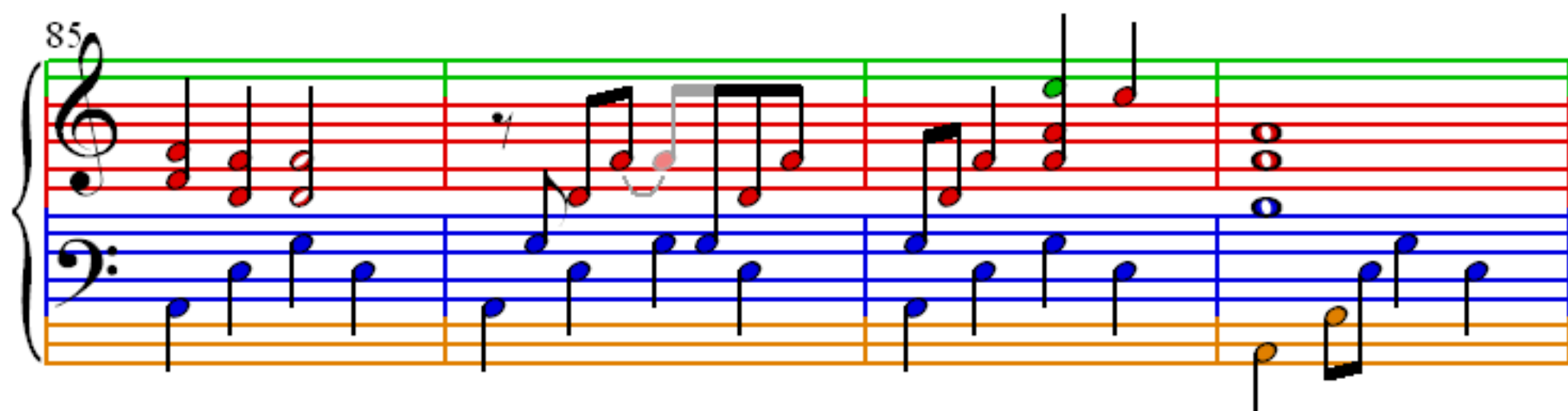
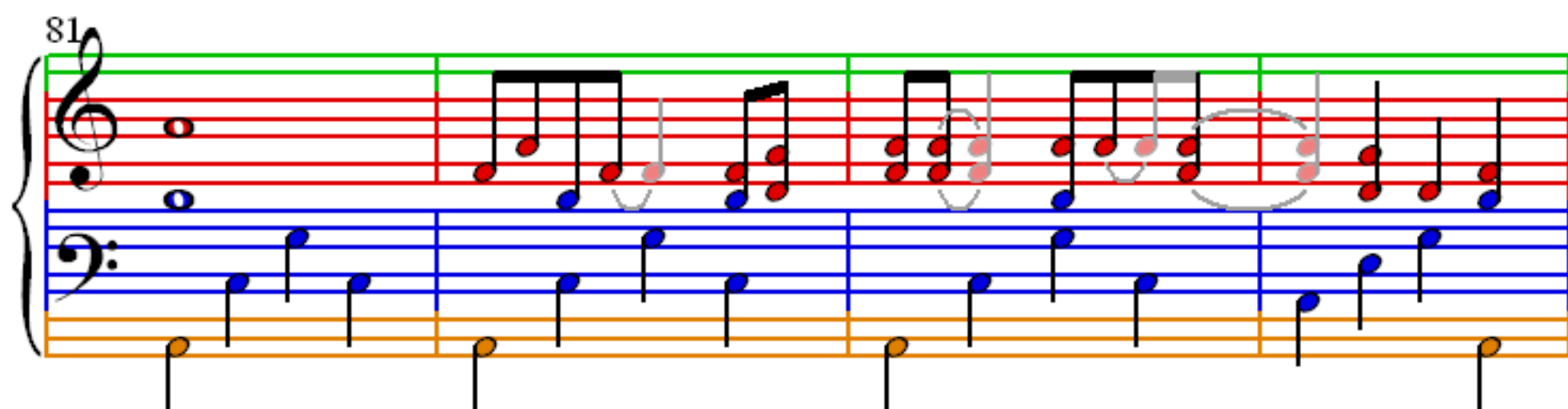
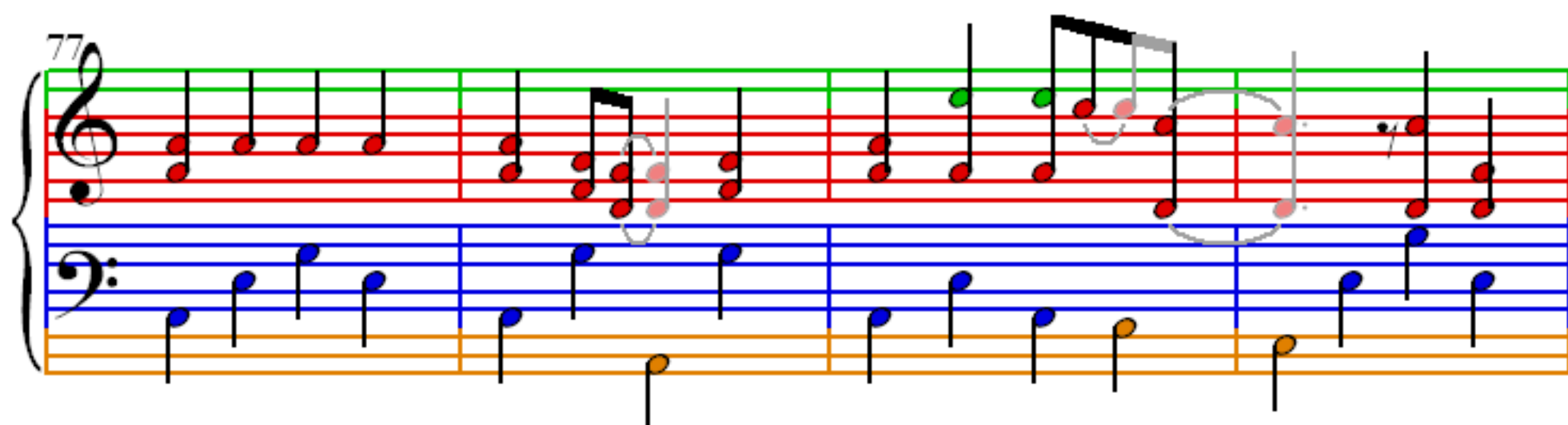
57

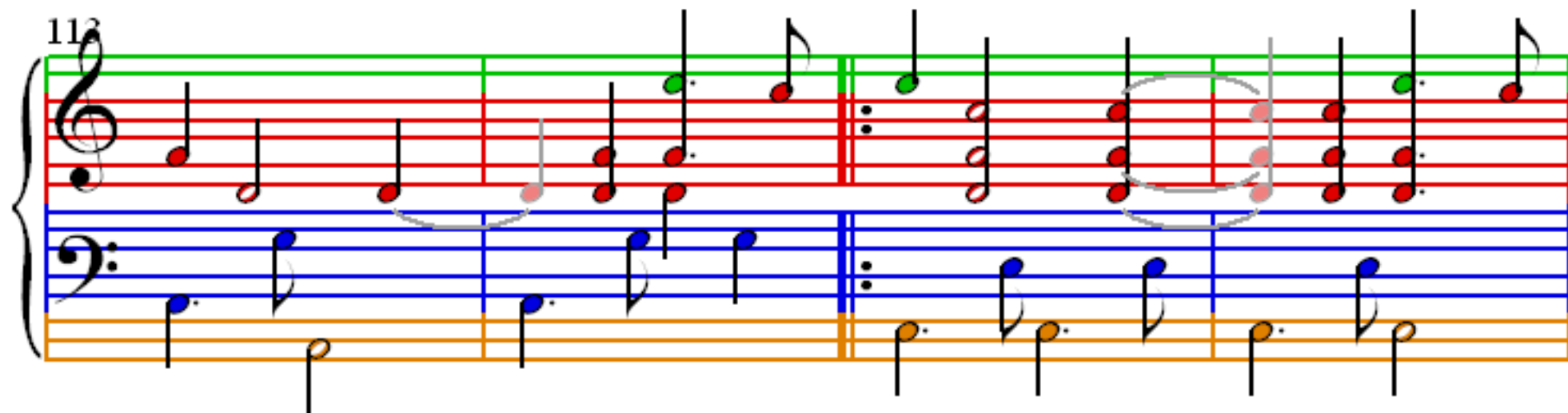
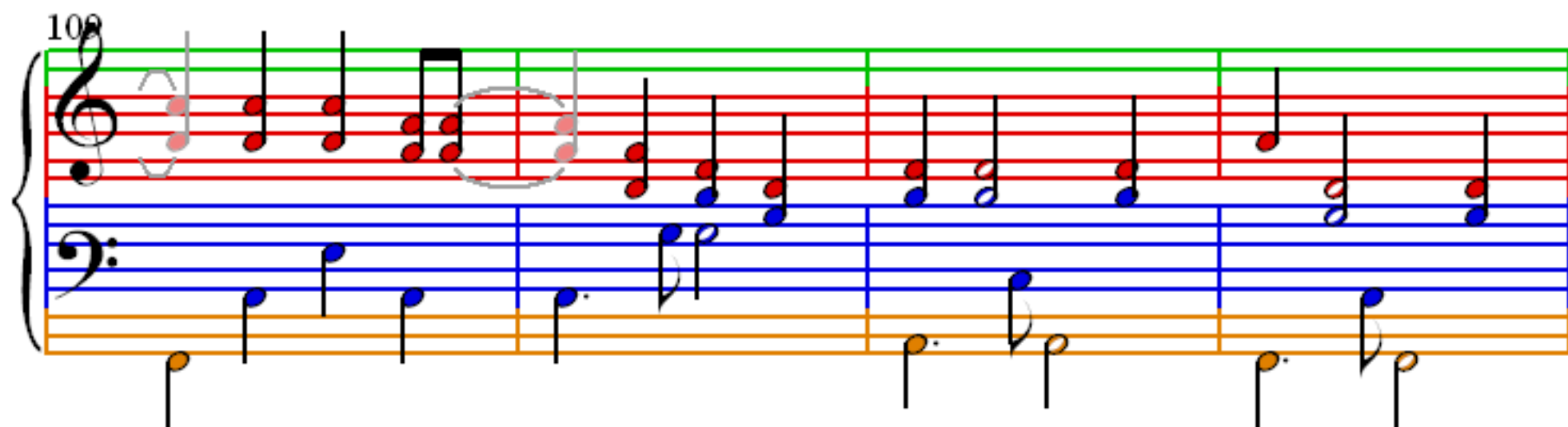
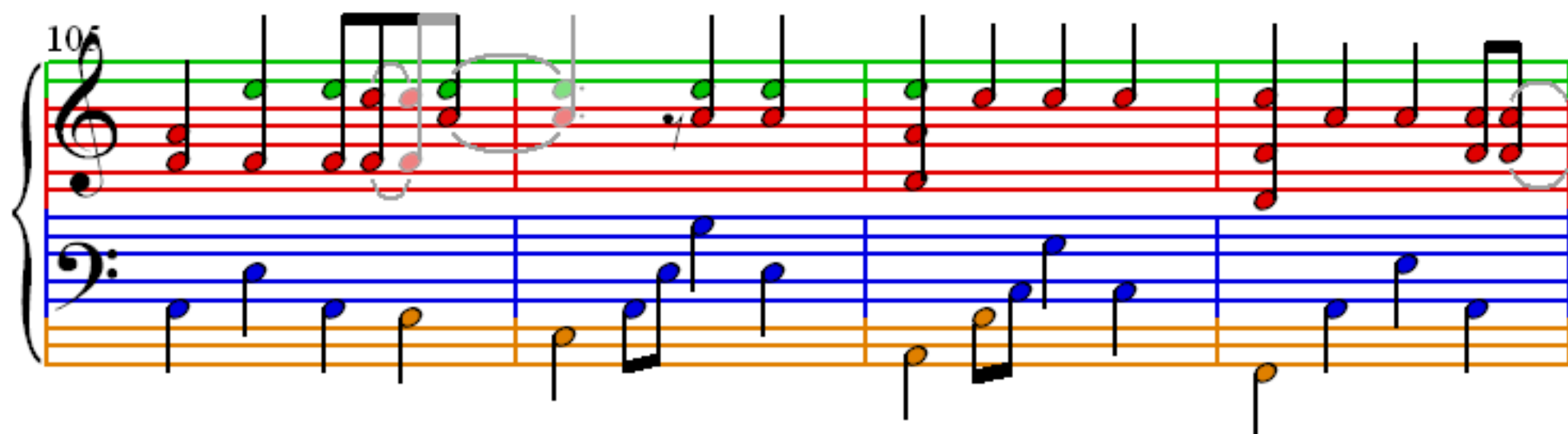
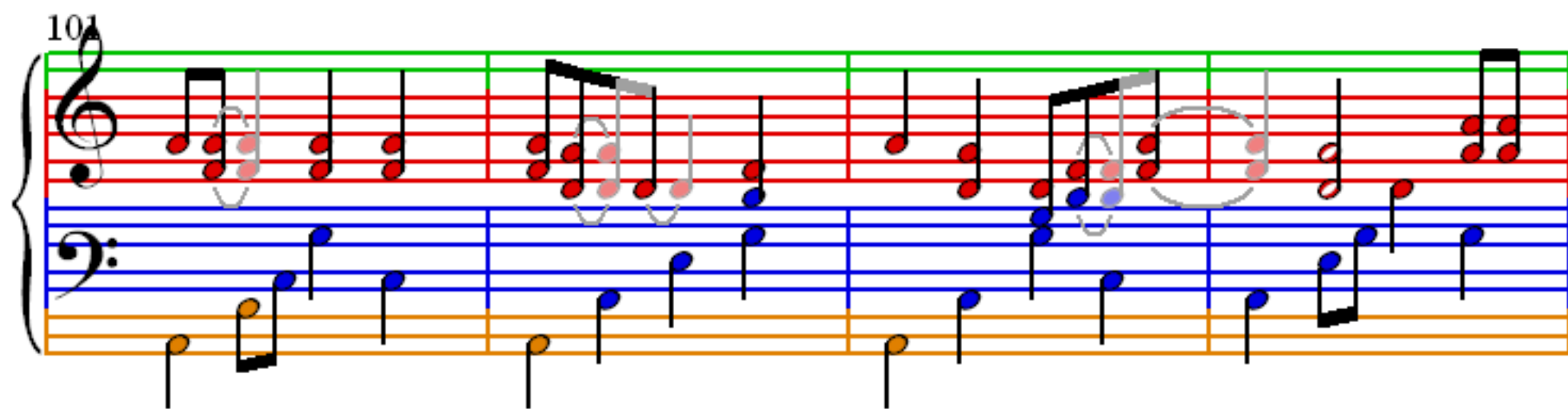
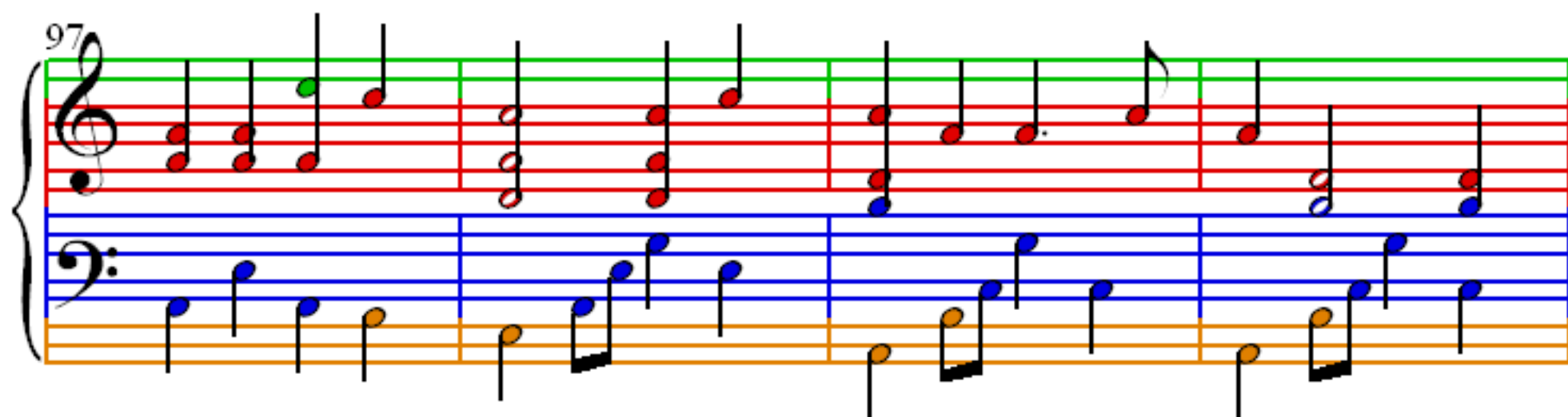
61

65

69

73







117

Measures 117-120. Treble clef: Measure 117 (G4, A4, B4, A4, G4), Measure 118 (F#4, E4, D4, C4), Measure 119 (B3, A3, G3, F#3), Measure 120 (E3, D3, C3, B2). Bass clef: Measure 117 (F#3, E3, D3, C3), Measure 118 (B2, A2, G2, F#2), Measure 119 (E2, D2, C2, B1), Measure 120 (A1, G1, F1, E1). A slur connects the notes in measure 118. A circle highlights the notes in measure 119.

121

Measures 121-124. Treble clef: Measure 121 (D4, C4, B3, A3, G3), Measure 122 (F#3, E3, D3, C3), Measure 123 (B3, A3, G3, F#3), Measure 124 (E3, D3, C3, B2). Bass clef: Measure 121 (A2, G2, F#2, E2), Measure 122 (D2, C2, B1, A1), Measure 123 (G1, F#1, E1, D1), Measure 124 (C1, B0, A0, G0). A slur connects the notes in measure 121. A circle highlights the notes in measure 122. A repeat sign is at the end of measure 124.