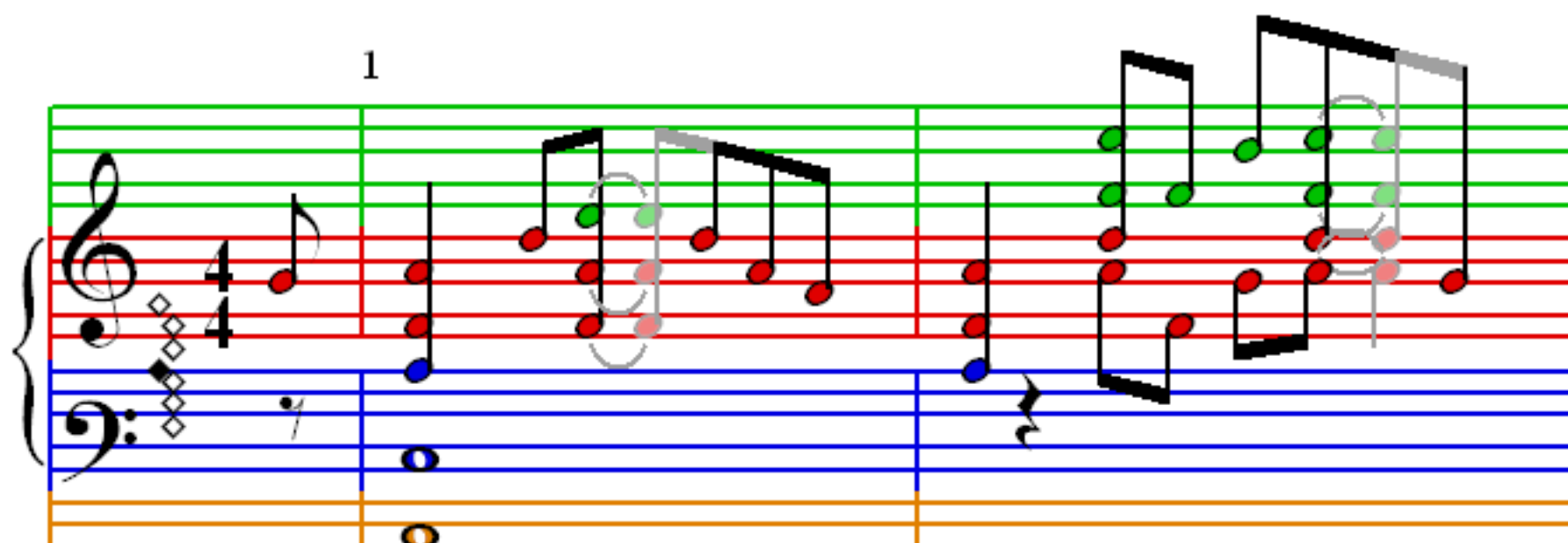


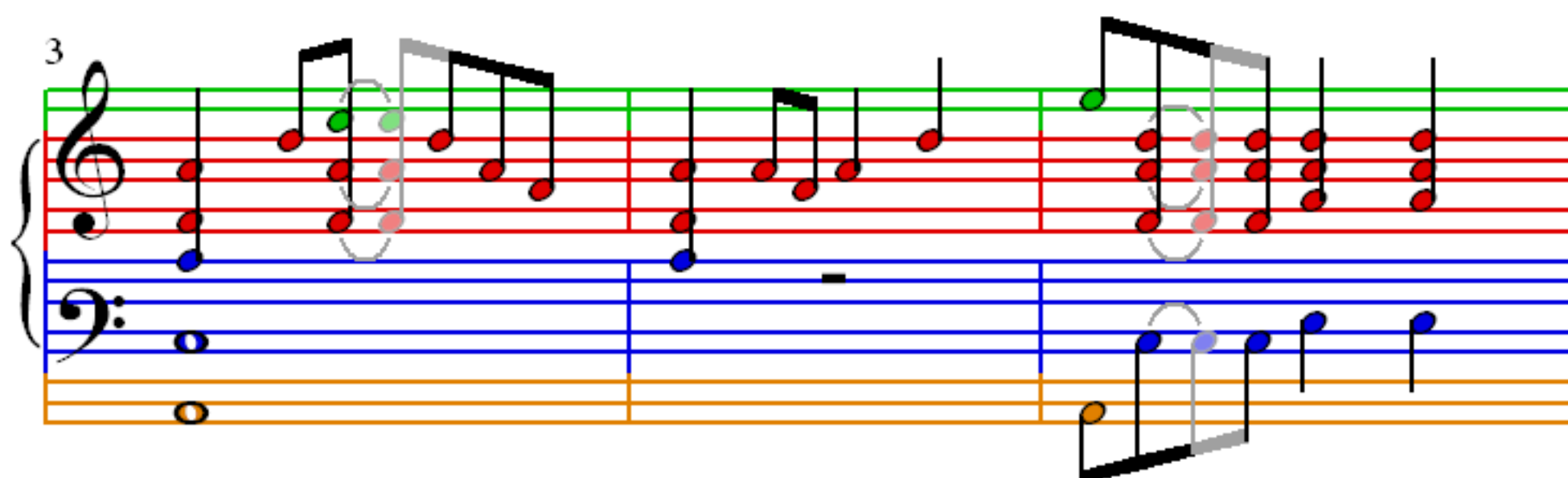
Unchain My Heart

Powell and Sharp

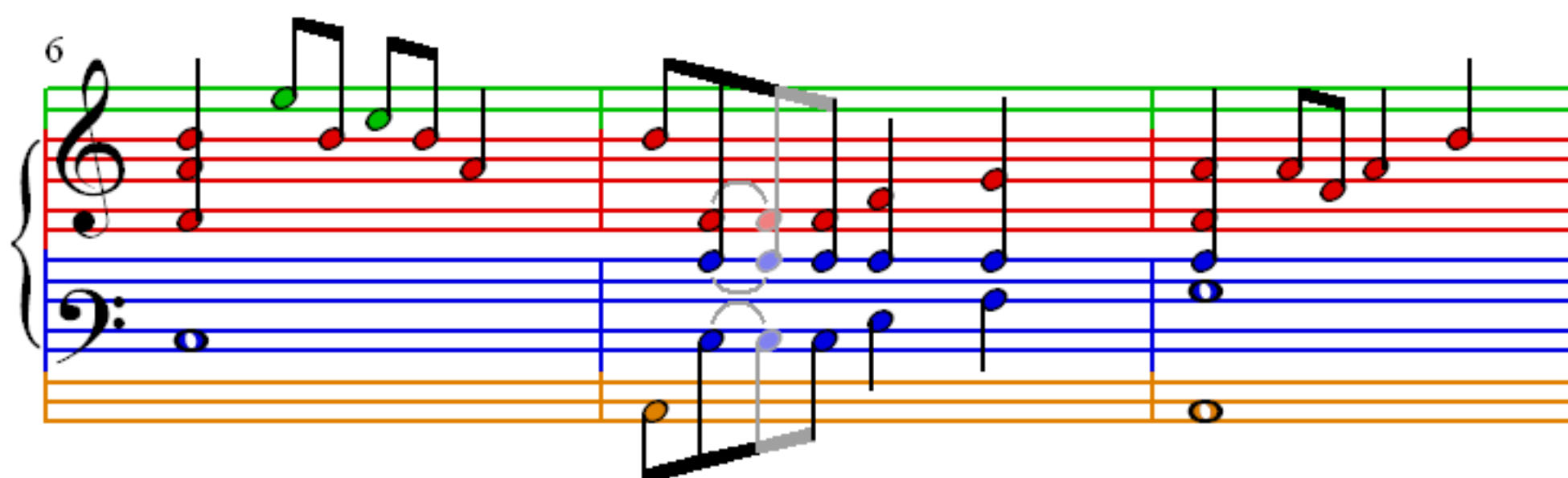
1



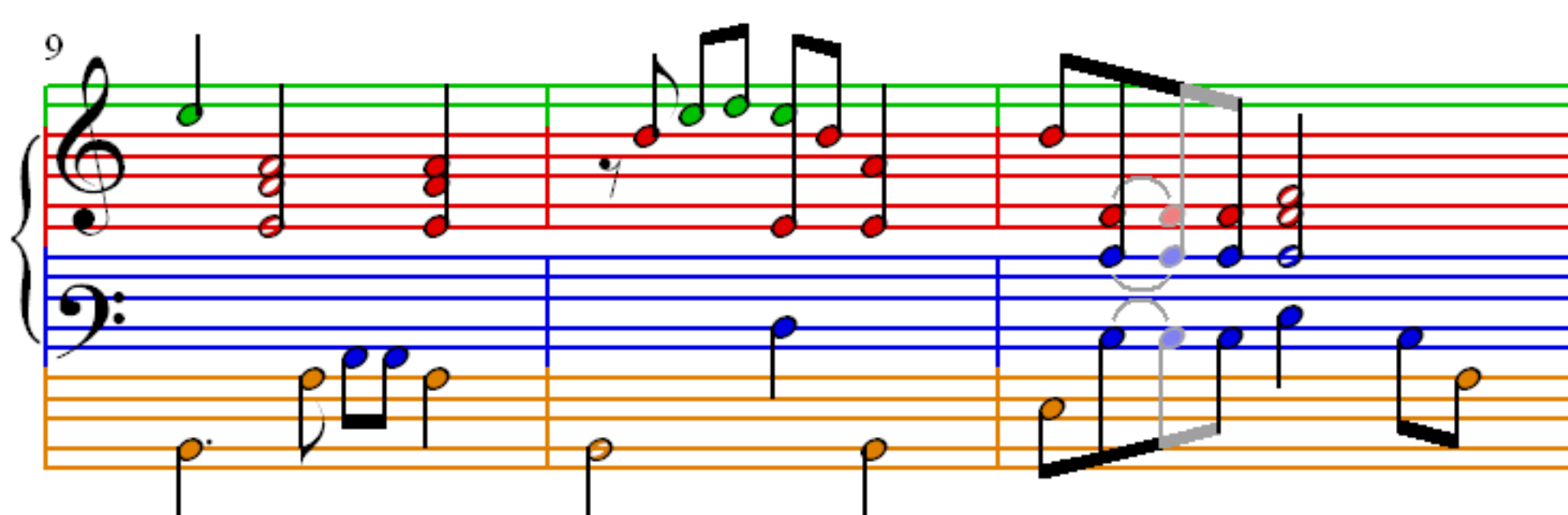
3



6



9



12

15

18

21

24

27

30

33

36

39

42

45

48

Measures 48-50. Treble clef: 48 (quarter, eighth, eighth, quarter, quarter), 49 (quarter, quarter, quarter, quarter), 50 (quarter, quarter, quarter, quarter). Bass clef: 48 (quarter, quarter), 49 (quarter, quarter), 50 (quarter, quarter). Third staff: 48 (quarter), 49 (quarter, quarter, quarter), 50 (quarter, quarter).

51

Measures 51-53. Treble clef: 51 (quarter, quarter, quarter, quarter), 52 (quarter, quarter, quarter, quarter), 53 (quarter, quarter, quarter, quarter). Bass clef: 51 (quarter, quarter), 52 (quarter, quarter), 53 (quarter, quarter). Third staff: 51 (quarter, quarter, quarter), 52 (quarter), 53 (quarter, quarter).

54

Measures 54-56. Treble clef: 54 (quarter, quarter, quarter, quarter), 55 (quarter, quarter, quarter, quarter), 56 (quarter, quarter, quarter, quarter). Bass clef: 54 (quarter, quarter), 55 (quarter, quarter), 56 (quarter, quarter). Third staff: 54 (quarter), 55 (quarter, quarter, quarter), 56 (quarter, quarter).

57

Measures 57-59. Treble clef: 57 (quarter, quarter, quarter, quarter), 58 (quarter, quarter, quarter, quarter), 59 (quarter, quarter, quarter, quarter). Bass clef: 57 (quarter, quarter), 58 (quarter, quarter), 59 (quarter, quarter). Third staff: 57 (quarter, quarter, quarter), 58 (quarter), 59 (quarter, quarter).

60

Handwritten musical score for measures 60-62. The score is written on a grand staff with a treble and bass clef. The treble staff has a green line, and the bass staff has a blue line. The notes are colored: green for the treble staff and red for the bass staff. Measure 60 shows a complex chord structure with a green line connecting the notes. Measure 61 shows a similar structure with a green line. Measure 62 shows a simpler structure with a green line. The notes are connected by a green line, indicating a melodic line.

63

Handwritten musical score for measures 63-65. The score is written on a grand staff with a treble and bass clef. The treble staff has a green line, and the bass staff has a blue line. The notes are colored: green for the treble staff and red for the bass staff. Measure 63 shows a complex chord structure with a green line connecting the notes. Measure 64 shows a similar structure with a green line. Measure 65 shows a simpler structure with a green line. The notes are connected by a green line, indicating a melodic line.