

♩ = 138

In May

1

Measures 1-4 of the piece. The notation is on a three-staff system: a green treble staff, a red middle staff, and a blue bass staff. The key signature is one flat (B-flat), indicated by a diamond symbol on the first line of the treble staff. The time signature is 3/4, indicated by a '3' over a '4' on the first line. The melody in the treble staff consists of quarter notes and half notes, with some notes beamed together. The bass staff provides a simple accompaniment with quarter notes.

5

Measures 5-8 of the piece. The notation continues on the same three-staff system. The melody in the treble staff continues with quarter and half notes. The bass staff continues with quarter notes.

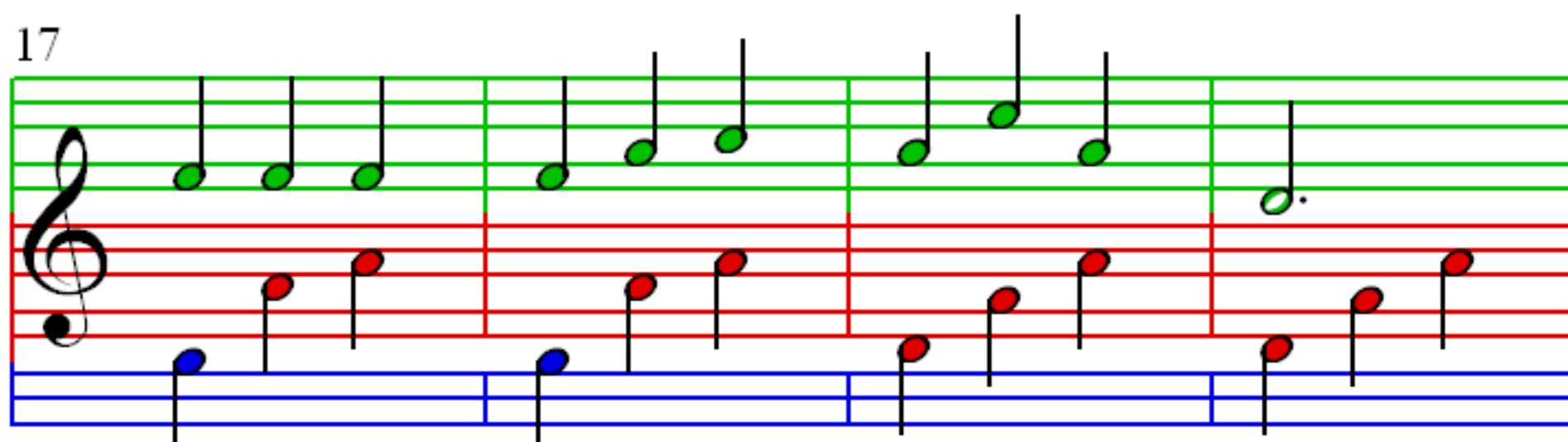
9

Measures 9-12 of the piece. The notation continues on the same three-staff system. The melody in the treble staff continues with quarter and half notes. The bass staff continues with quarter notes.

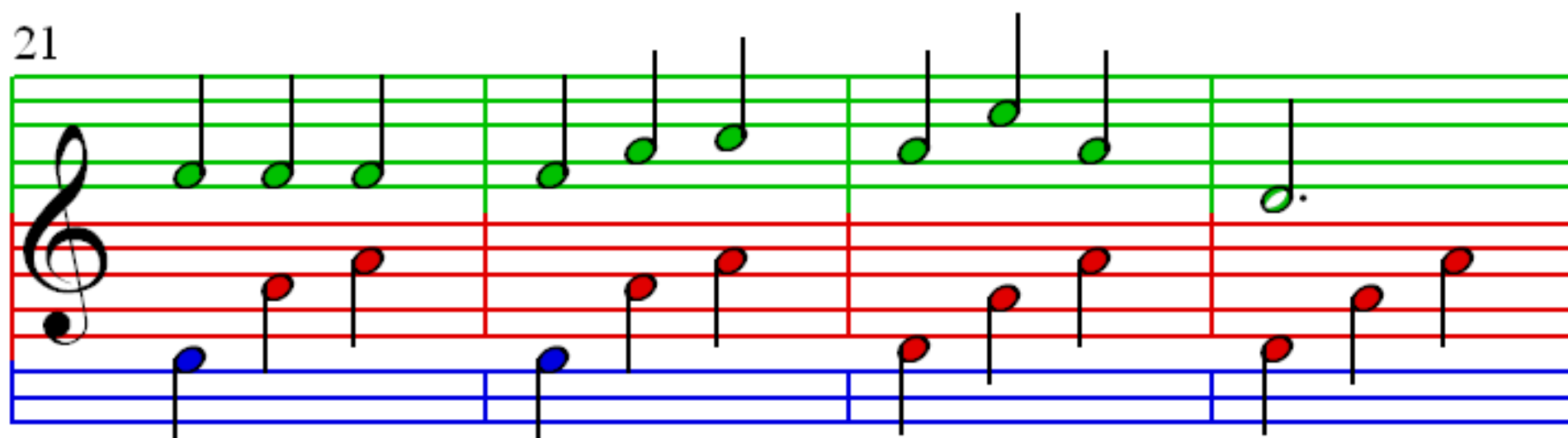
13

Measures 13-16 of the piece. The notation continues on the same three-staff system. The melody in the treble staff continues with quarter and half notes. The bass staff continues with quarter notes.

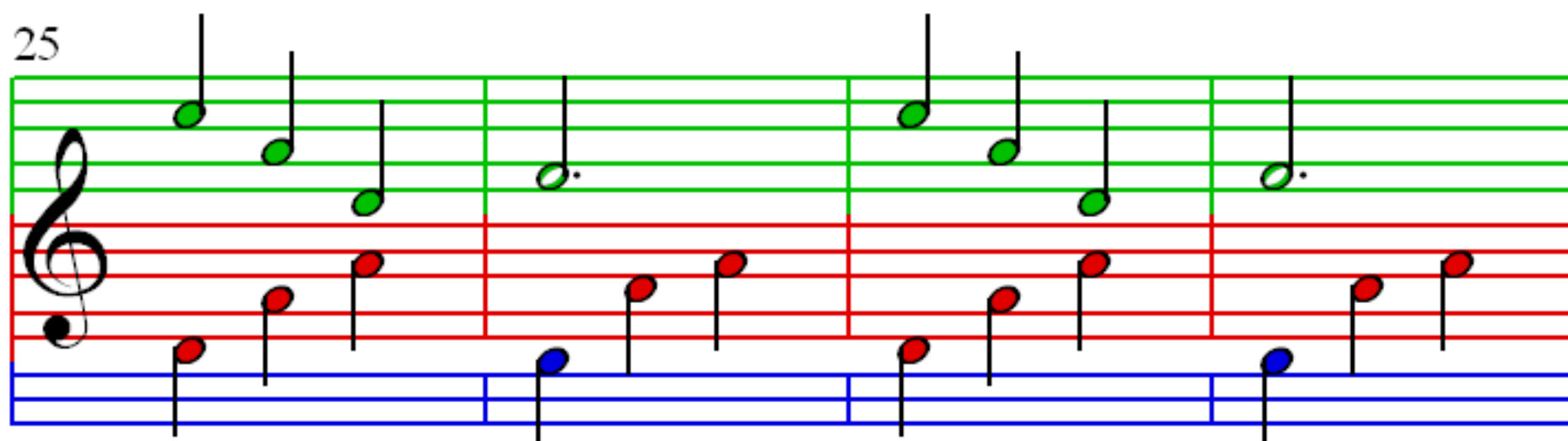
17



21



25



29

