

♩ = 120

Carribean Blue

Enya

1

Measures 1-4 of the piece. The treble staff (red) contains a simple melody of quarter notes. The bass staff (blue) features a complex accompaniment with eighth and sixteenth notes. The bottom staff (orange) provides a steady bass line with quarter notes.

5

Measures 5-8. Measures 5 and 6 introduce a more active treble melody with eighth and sixteenth notes. The bass and bottom staves continue their respective patterns.

9

Measures 9-12. The treble staff returns to a simpler melody of quarter notes. The bass and bottom staves maintain their accompaniment.

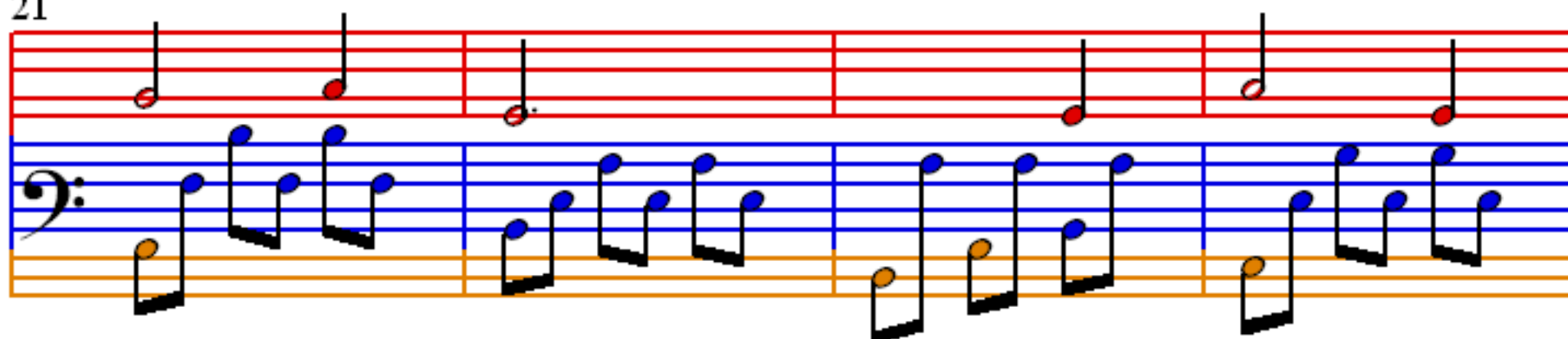
13

Measures 13-16. Measures 13 and 14 feature a more active treble melody. Measures 15 and 16 show a change in the bass line, with the bottom staff moving to a new rhythmic pattern.

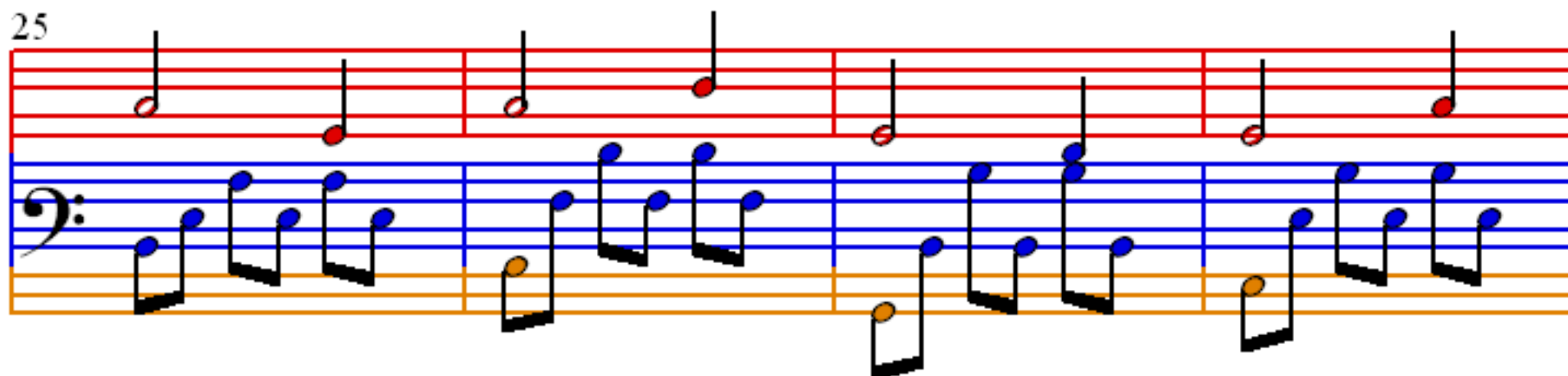
17

Measures 17-20. The final system shows a continuation of the treble melody and the active bass line from the previous system.

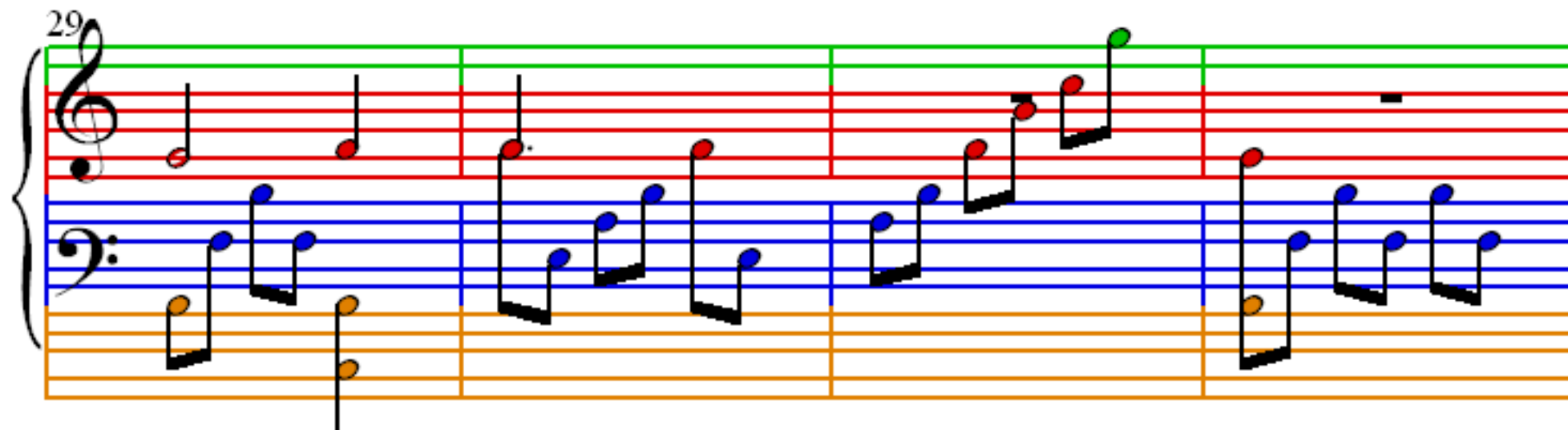
21



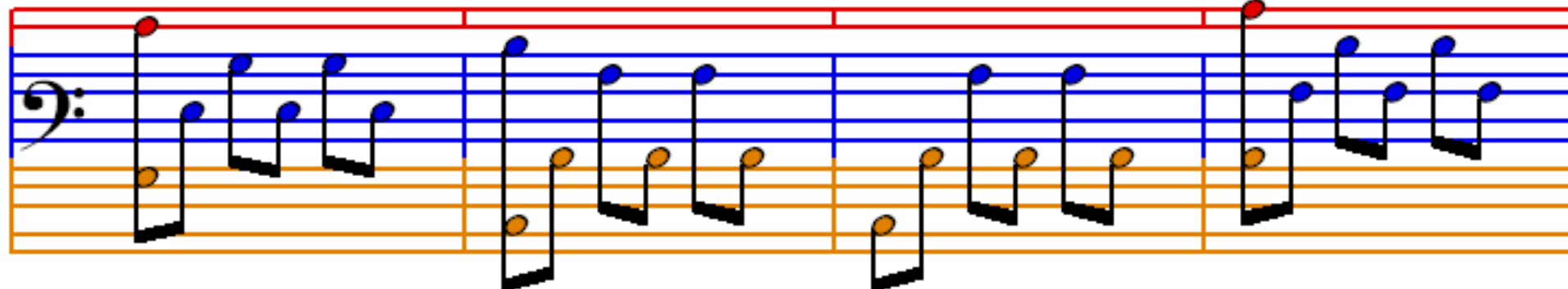
25



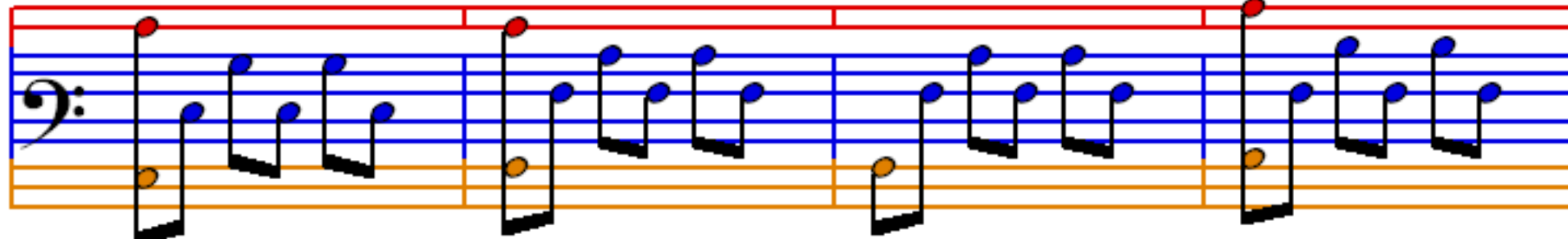
29



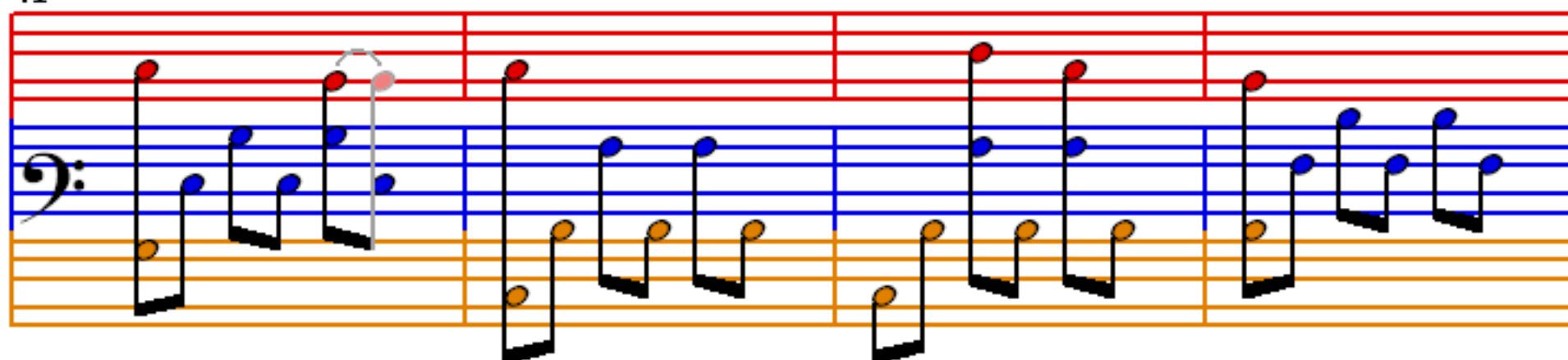
33



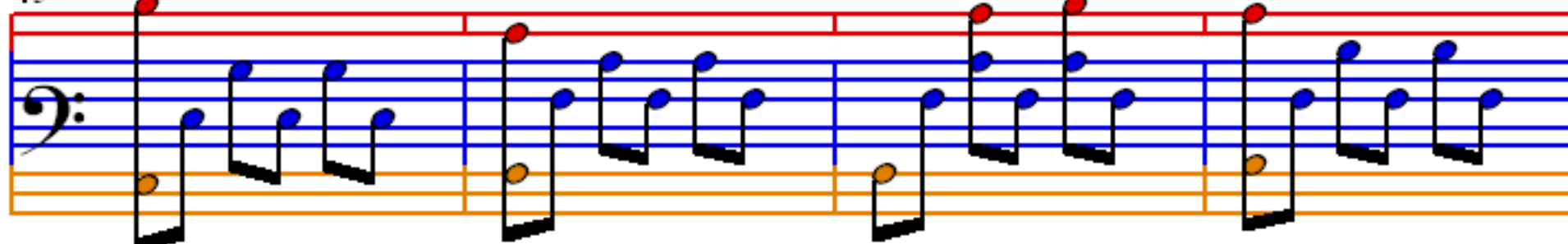
37



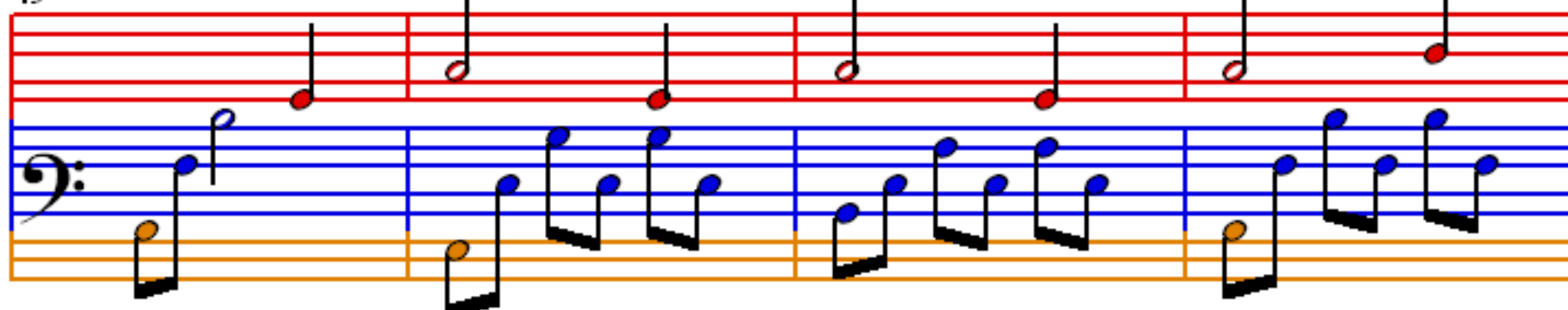
41



45



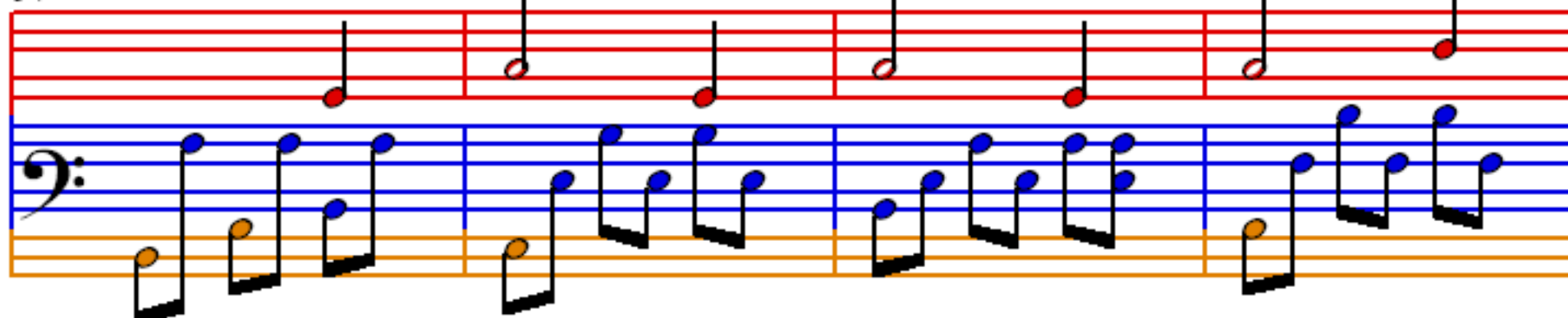
49



53



57



61

65

69

73

77

81

85

89

93

97

101

Measures 101-104: Treble clef (green line at top) contains quarter notes. Bass clef contains eighth notes, with a half note in measure 103.

105

Measures 105-108: Treble clef (red line at top) contains quarter notes. Bass clef contains eighth notes, with a half note in measure 107.

109

Measures 109-112: Treble clef (green line at top) contains quarter notes. Bass clef contains eighth notes, with a half note in measure 111.

113

Measures 113-116: Treble clef (red line at top) contains quarter notes. Bass clef contains eighth notes, with a half note in measure 115.

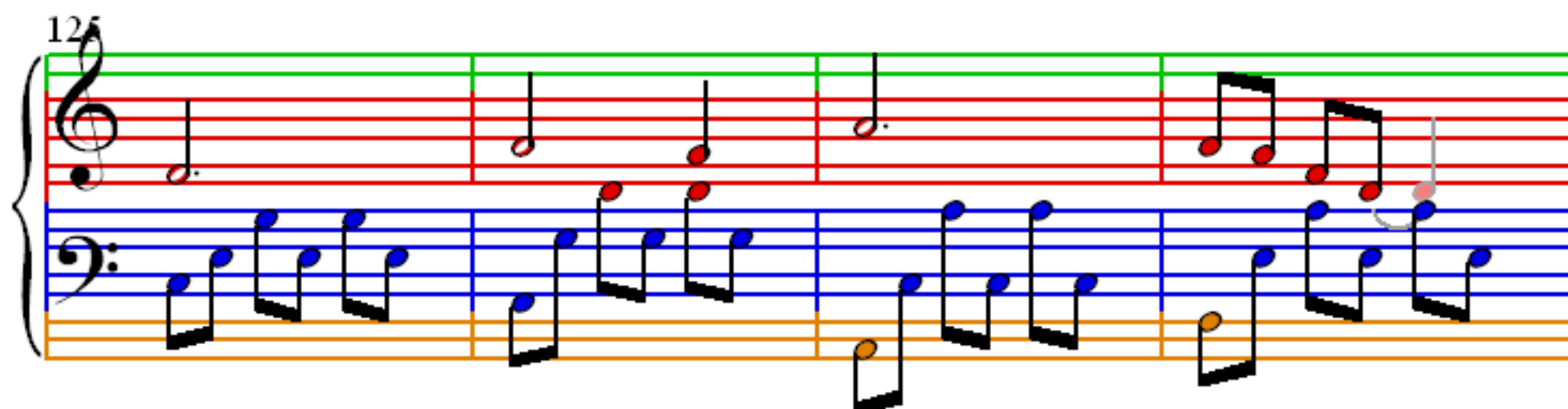
117

Measures 117-120: Treble clef (green line at top) contains quarter notes. Bass clef contains eighth notes, with a half note in measure 119.

121



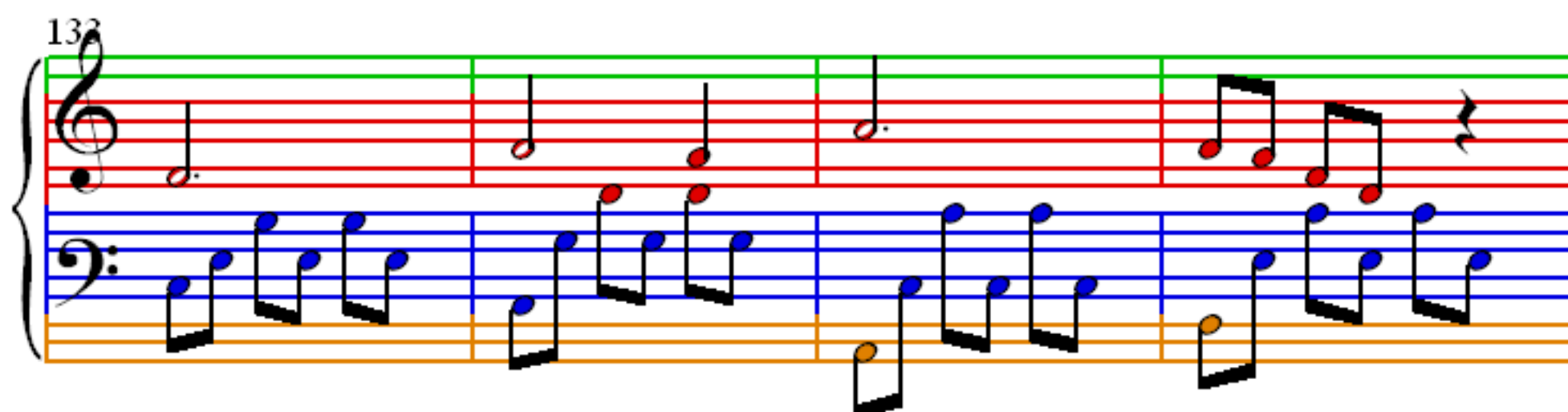
125



129



133



137



141

145

149

153

157

161