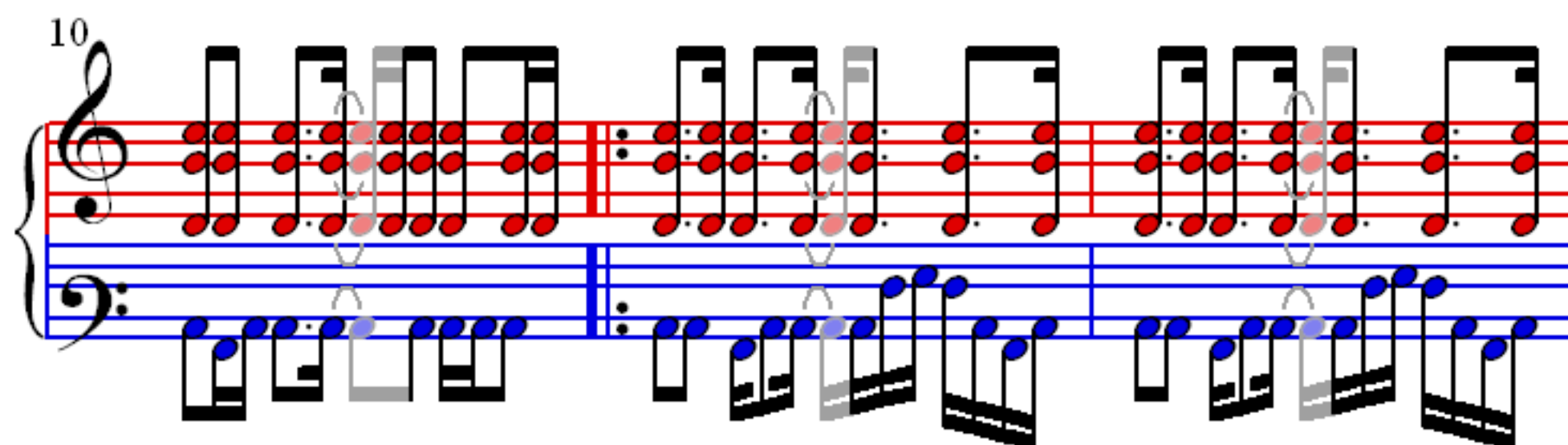
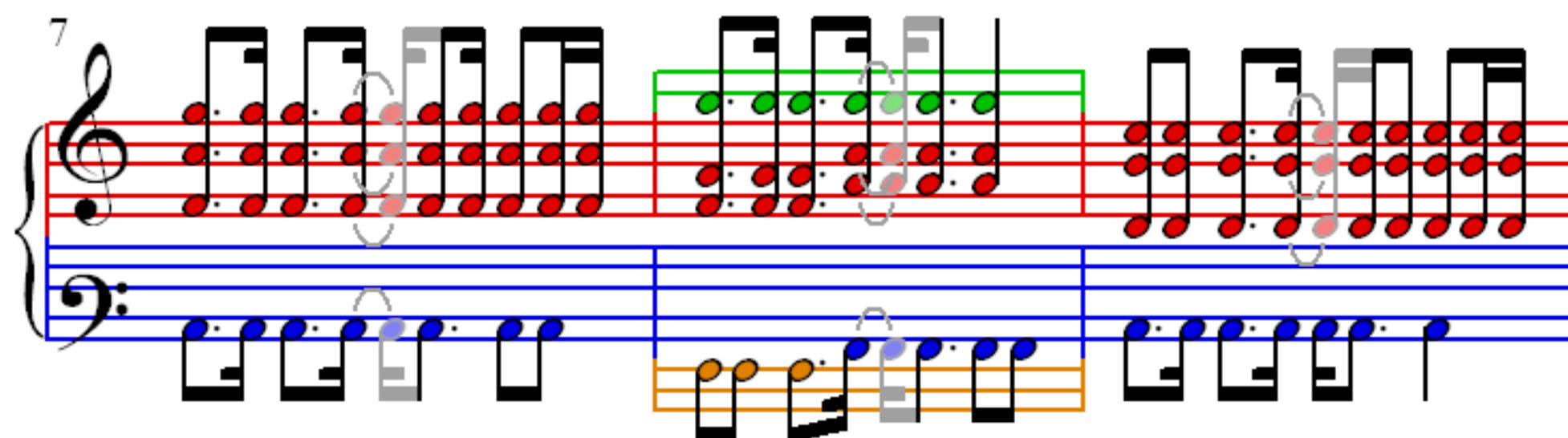
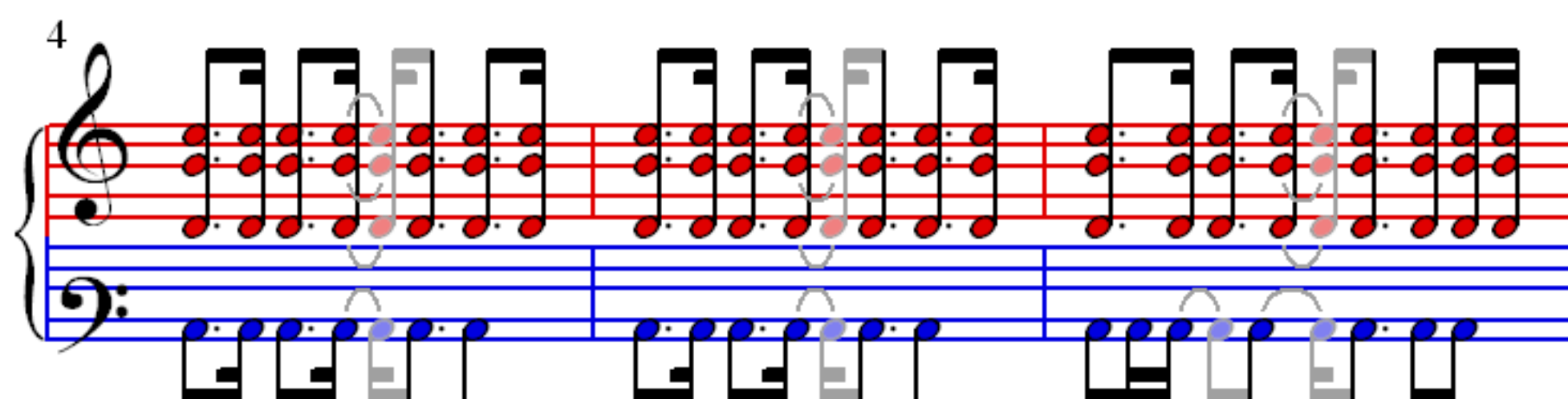
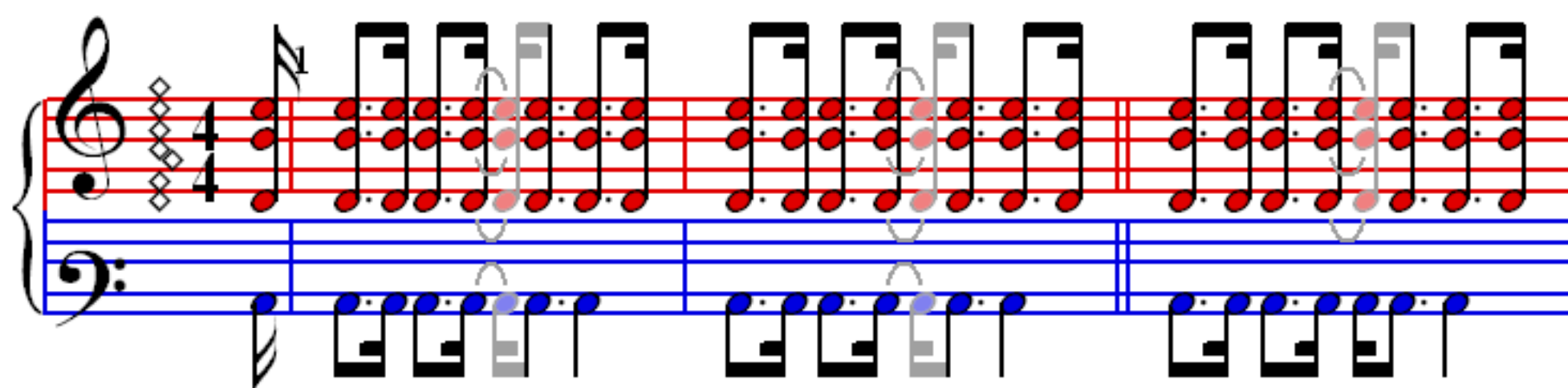


Go Let It Out

Oasis

♩ = 100



13

Measures 13-15. Treble clef has red notes, bass clef has blue notes, and a third staff has orange notes. Measure 13 has a grey oval around the 3rd and 4th notes of the treble staff. Measure 14 has a grey oval around the 3rd and 4th notes of the treble staff. Measure 15 has a grey oval around the 3rd and 4th notes of the treble staff.

16

Measures 16-18. Treble clef has green notes, bass clef has blue notes, and a third staff has orange notes. Measure 16 has a grey oval around the 3rd and 4th notes of the treble staff. Measure 17 has a grey oval around the 3rd and 4th notes of the treble staff. Measure 18 has a grey oval around the 3rd and 4th notes of the treble staff.

19

Measures 19-21. Treble clef has red notes, bass clef has blue notes, and a third staff has orange notes. Measure 19 has a grey oval around the 3rd and 4th notes of the treble staff. Measure 20 has a grey oval around the 3rd and 4th notes of the treble staff. Measure 21 has a grey oval around the 3rd and 4th notes of the treble staff.

22

Handwritten musical score for measures 22-24. The score is written on a grand staff with a treble and bass clef. The treble staff has a red line and a green line. The bass staff has a blue line and an orange line. The notes are colored red, green, blue, and orange. A dashed line connects the notes in the treble staff across measures 22 and 23. The notes are grouped in measures of 2, 2, and 2.

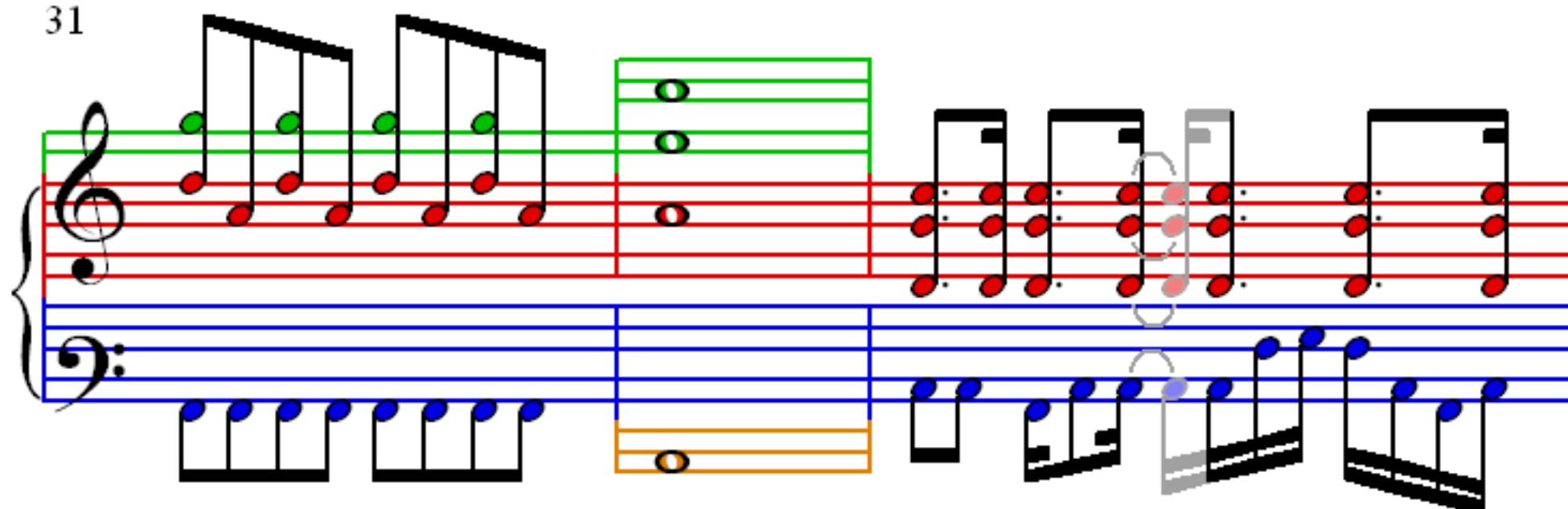
25

Handwritten musical score for measures 25-27. The score is written on a grand staff with a treble and bass clef. The treble staff has a red line and a green line. The bass staff has a blue line and an orange line. The notes are colored red, green, blue, and orange. The notes are grouped in measures of 2, 2, and 2.

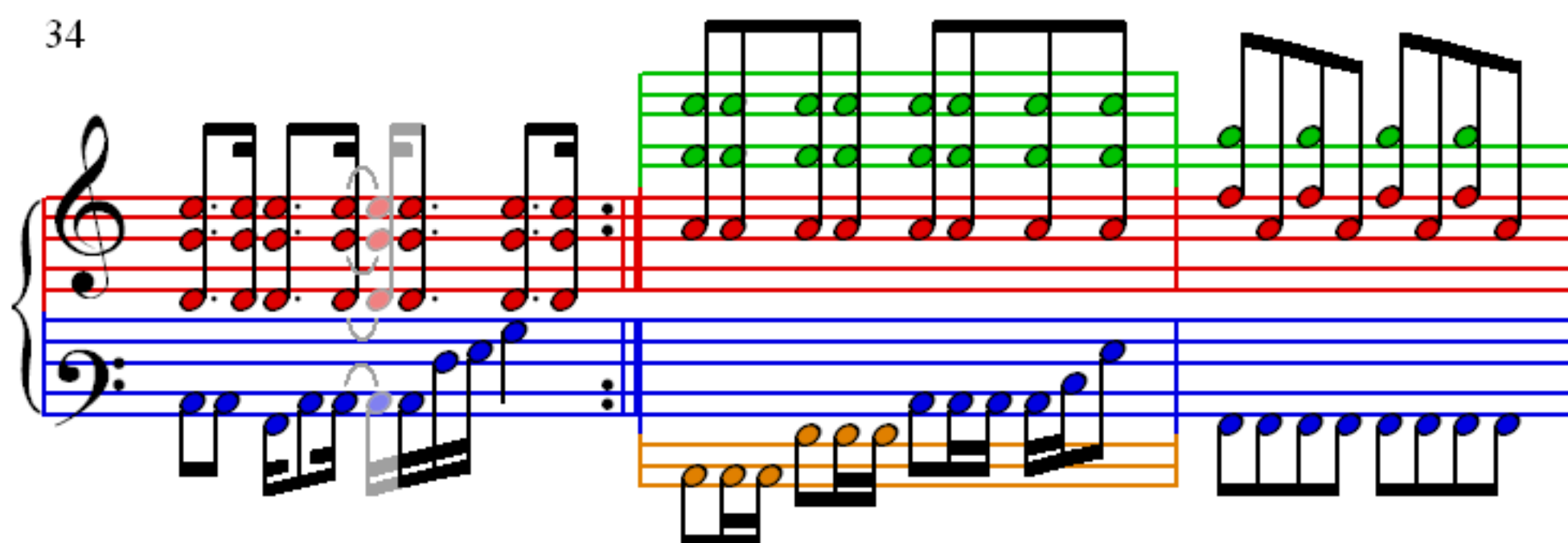
28

Handwritten musical score for measures 28-30. The score is written on a grand staff with a treble and bass clef. The treble staff has a red line and a green line. The bass staff has a blue line and an orange line. The notes are colored red, green, blue, and orange. The notes are grouped in measures of 2, 2, and 2.

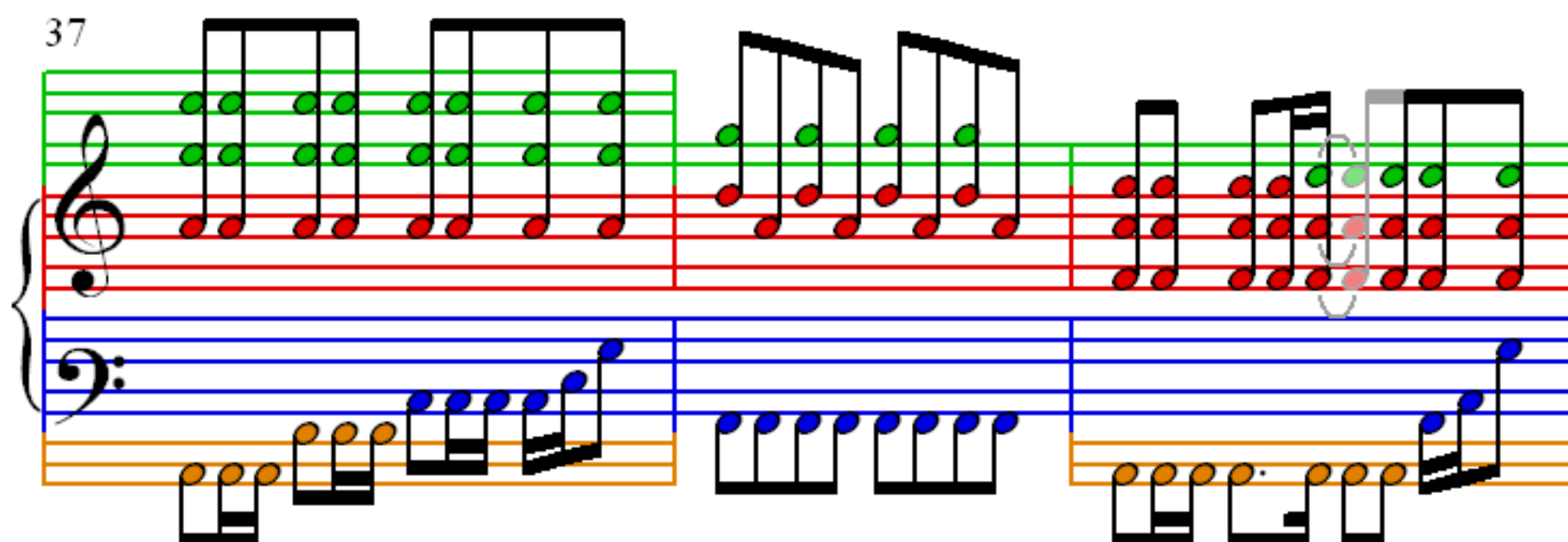
31



34



37



40

Measures 40-42. The treble clef staff features a complex melody with many beamed eighth notes, some green and some red. The bass clef staff has a simple accompaniment with a few notes. A third staff below the bass clef has a single note on a yellow line.

43

Measures 43-45. The treble clef staff continues the complex melody with beamed eighth notes. The bass clef staff has a simple accompaniment. A third staff below the bass clef has a single note on a yellow line.

46

Measures 46-48. The treble clef staff has a complex melody with beamed eighth notes. The bass clef staff has a simple accompaniment. A third staff below the bass clef has a single note on a yellow line.

49

Measures 49-51. The treble clef staff has a green line and a red line. The bass clef staff has a blue line and an orange line. The music consists of eighth notes and sixteenth notes, with some notes beamed together. The treble clef staff has a repeat sign at the end of measure 51.

52

Measures 52-54. The treble clef staff has a green line and a red line. The bass clef staff has a blue line and an orange line. The music consists of eighth notes and sixteenth notes, with some notes beamed together. The treble clef staff has a repeat sign at the end of measure 54.

55

Measures 55-57. The treble clef staff has a green line and a red line. The bass clef staff has a blue line and an orange line. The music consists of eighth notes and sixteenth notes, with some notes beamed together. The treble clef staff has a repeat sign at the end of measure 57.