

# Elvira Madigan

Mozart

$\text{♩} = 57$

The image displays the first 13 measures of the piano introduction to 'Elvira Madigan' by Wolfgang Amadeus Mozart. The score is written for piano in 2/4 time, with a tempo marking of quarter note = 57. The notation is color-coded: the right hand (treble clef) is green, the left hand (bass clef) is blue, and the grand staff bracket is orange. Measures 1-4 show a continuous eighth-note triplet pattern in the left hand. Measures 5-8 introduce a melody in the right hand. Measures 9-12 continue the triplet pattern in the left hand, while the right hand has rests. Measure 13 begins a new melodic phrase in the right hand. The score includes various musical notations such as treble and bass clefs, time signature, tempo, and dynamic markings like *ff* and *f*.

17

Measures 17-20 of a musical score. The system consists of a grand staff with a treble clef and a bass clef. The treble staff has a purple staff above it. The bass staff has a blue staff above it. The music is written in 3/4 time. Measures 17-20 show a sequence of chords and single notes. The bass staff features a series of triplets (indicated by a '3' and a bracket) in the blue staff. The treble staff has a series of chords (indicated by red dots) in the red staff. The purple staff has a single note in measure 18.

21

Measures 21-22 of a musical score. The system consists of a grand staff with a treble clef and a bass clef. The treble staff has a purple staff above it. The bass staff has a blue staff above it. The music is written in 3/4 time. Measures 21-22 show a sequence of chords and single notes. The bass staff features a series of triplets (indicated by a '3' and a bracket) in the blue staff. The treble staff has a series of chords (indicated by red dots) in the red staff. The purple staff has a single note in measure 21.

23

Measures 23-26 of a musical score. The system consists of a grand staff with a treble clef and a bass clef. The treble staff has a green staff above it. The bass staff has a blue staff above it. The music is written in 3/4 time. Measures 23-26 show a sequence of chords and single notes. The bass staff features a series of triplets (indicated by a '3' and a bracket) in the blue staff. The treble staff has a series of chords (indicated by red dots) in the red staff. The green staff has a series of chords (indicated by green dots) in the green staff.

27

Measures 27-30 of a musical score. The system consists of a grand staff with a treble clef and a bass clef. The treble staff has a green staff above it. The bass staff has a blue staff above it. The music is written in 3/4 time. Measures 27-30 show a sequence of chords and single notes. The bass staff features a series of triplets (indicated by a '3' and a bracket) in the blue staff. The treble staff has a series of chords (indicated by red dots) in the red staff. The green staff has a series of chords (indicated by green dots) in the green staff.

31

35

39

43

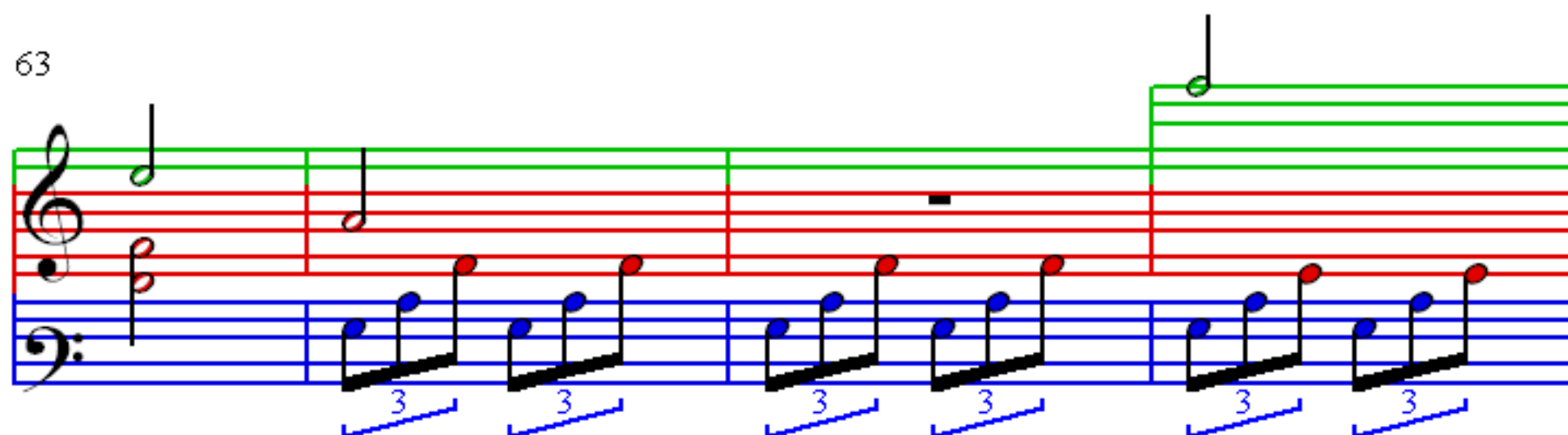
47

51

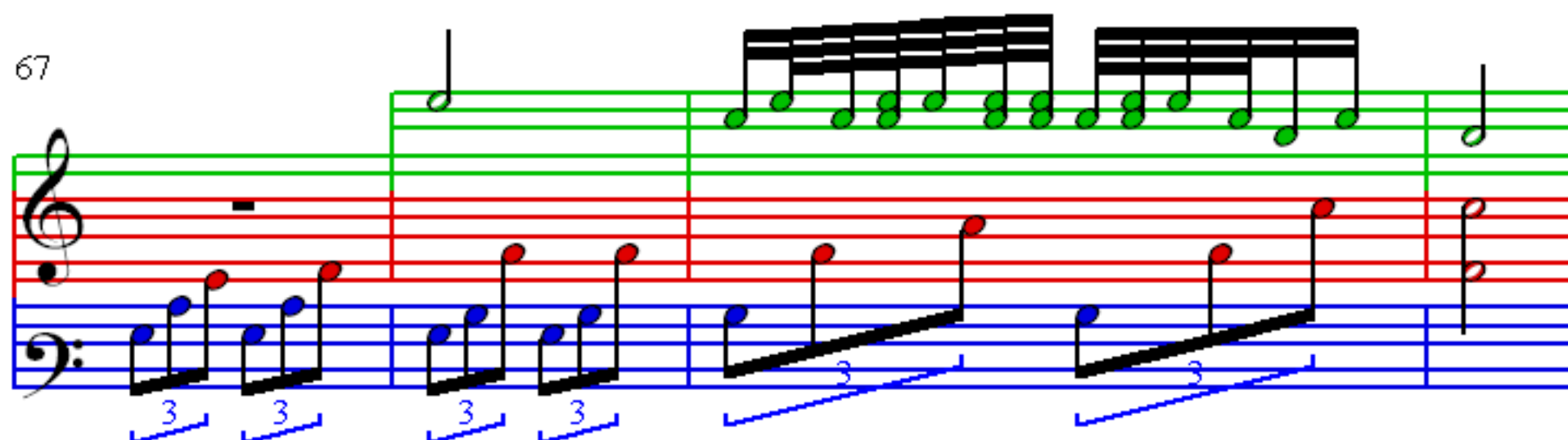
55

59

63



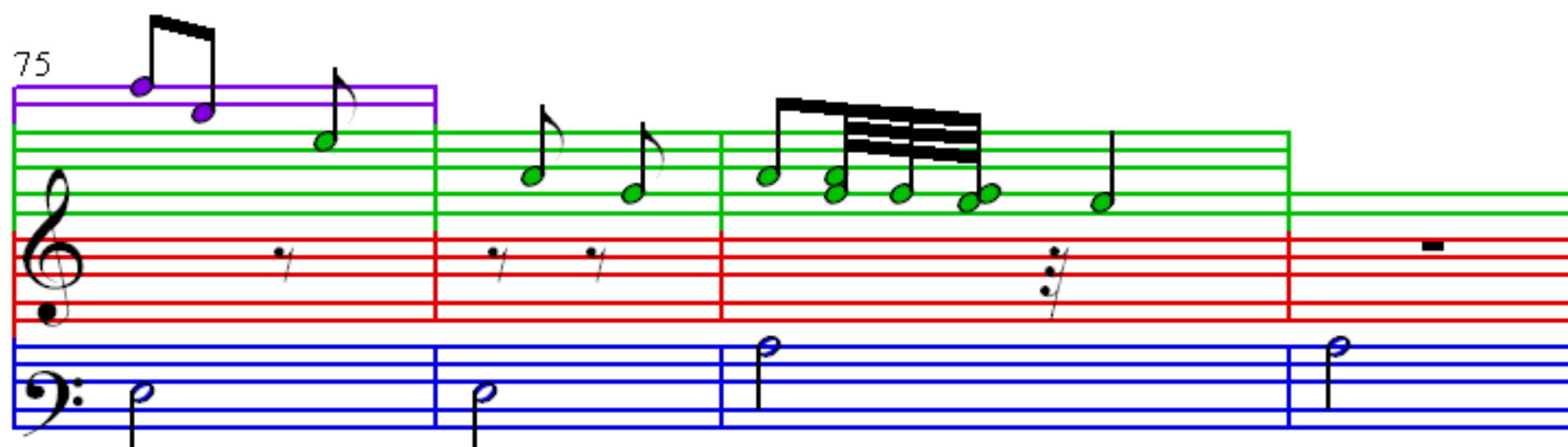
67



71



75



79

Measures 79-82. Treble clef: Measure 79 (whole rest), Measure 80 (eighth-note chord), Measure 81 (whole rest), Measure 82 (eighth-note chord). Bass clef: Measure 79 (whole note), Measure 80 (half note), Measure 81 (whole note), Measure 82 (half note).

83

Measures 83-86. Treble clef: Measure 83 (whole rest), Measure 84 (eighth-note chord), Measure 85 (whole rest), Measure 86 (eighth-note chord). Bass clef: Measure 83 (whole note), Measure 84 (half note), Measure 85 (whole note), Measure 86 (half note).

87

Measures 87-90. Treble clef: Measure 87 (eighth-note chord), Measure 88 (eighth-note chord), Measure 89 (eighth-note chord), Measure 90 (eighth-note chord). Bass clef: Measure 87 (half note), Measure 88 (half note), Measure 89 (whole note), Measure 90 (whole note).

91

Measures 91-94. Treble clef: Measure 91 (eighth-note chord), Measure 92 (eighth-note chord), Measure 93 (eighth-note chord), Measure 94 (eighth-note chord). Bass clef: Measure 91 (eighth-note chord), Measure 92 (eighth-note chord, triplet), Measure 93 (eighth-note chord, triplet), Measure 94 (eighth-note chord, triplet).

95

99

102

106

110

Measures 110-113. The right hand (treble clef) plays a melody of eighth notes. The left hand (bass clef) plays a triplet of eighth notes in the first measure, followed by a single eighth note in the second measure, and then rests in the third and fourth measures.

114

Measures 114-117. The right hand (treble clef) plays a melody of eighth notes. The left hand (bass clef) plays a single eighth note in the first measure, followed by rests in the second and third measures, and then a single eighth note in the fourth measure.

118

Measures 118-121. The right hand (treble clef) plays a melody of eighth notes. The left hand (bass clef) plays a single eighth note in the first measure, followed by rests in the second and third measures, and then a single eighth note in the fourth measure.

122

Measures 122-125. The right hand (treble clef) plays a melody of eighth notes. The left hand (bass clef) plays a triplet of eighth notes in the first measure, followed by a single eighth note in the second measure, and then rests in the third and fourth measures.



126

Measures 126-129. Treble clef: Measure 126 has a whole rest. Measure 127 has a quarter note G4. Measure 128 has a quarter note A4. Measure 129 has a whole rest. Bass clef: Measures 126-129 feature a continuous eighth-note triplet pattern. The notes are G3, A3, B3 in measures 126-127, and A3, B3, C4 in measures 128-129. Each triplet is marked with a blue bracket and the number 3.

130

Measures 130-133. Treble clef: Measure 130 has a quarter note G4, quarter note A4, quarter note B4, and quarter note C5. Measure 131 has a quarter note B4, quarter note A4, and a half note G4. Measure 132 has a whole rest. Measure 133 has a quarter note G4. Bass clef: Measures 130-133 feature a continuous eighth-note triplet pattern. The notes are G3, A3, B3 in measures 130-131, and A3, B3, C4 in measures 132-133. Each triplet is marked with a blue bracket and the number 3.

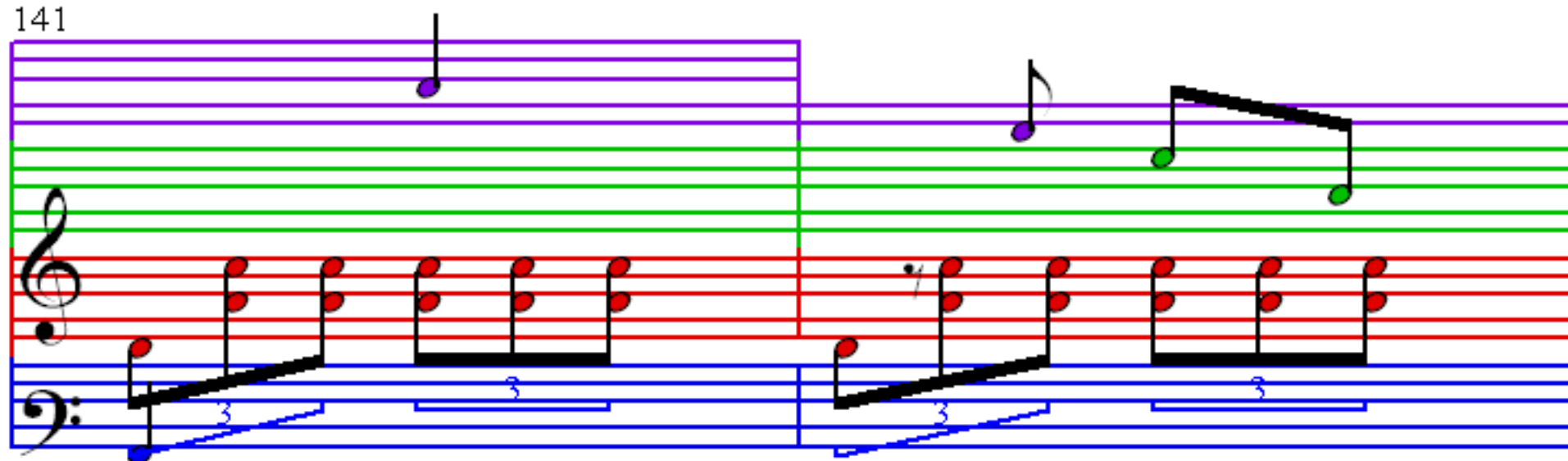
134

Measures 134-137. Treble clef: Measure 134 has a whole rest. Measure 135 has a whole rest. Measure 136 has a whole rest. Measure 137 has a whole rest. Bass clef: Measures 134-137 feature a continuous eighth-note triplet pattern. The notes are G3, A3, B3 in measures 134-135, and A3, B3, C4 in measures 136-137. Each triplet is marked with a blue bracket and the number 3.

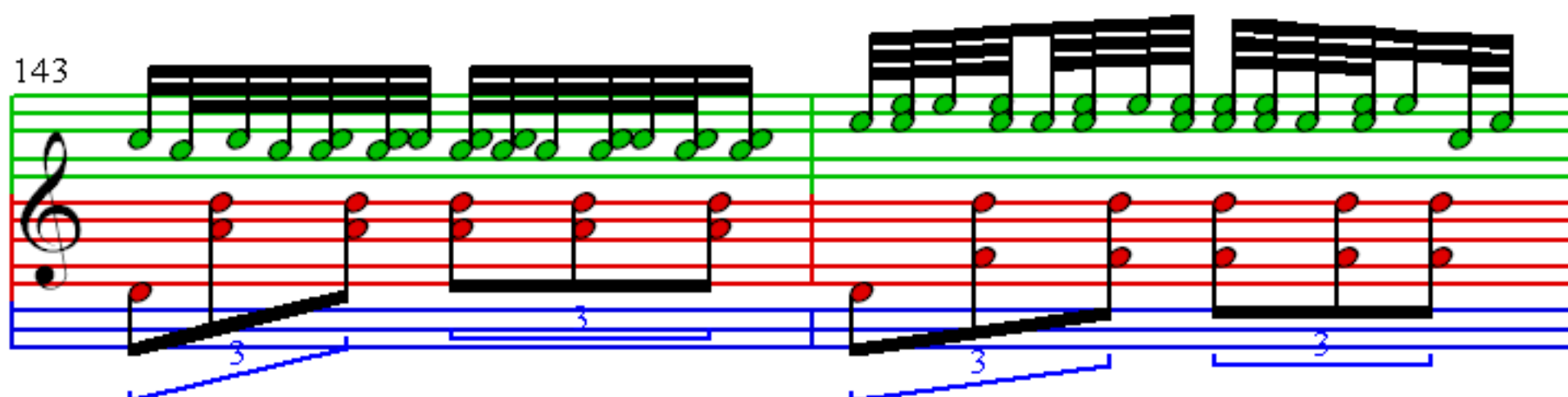
138

Measures 138-141. Treble clef: Measure 138 has a whole rest. Measure 139 has a whole rest. Measure 140 has a whole rest. Measure 141 has a whole rest. Bass clef: Measures 138-141 feature a continuous eighth-note triplet pattern. The notes are G3, A3, B3 in measures 138-139, and A3, B3, C4 in measures 140-141. Each triplet is marked with a blue bracket and the number 3.

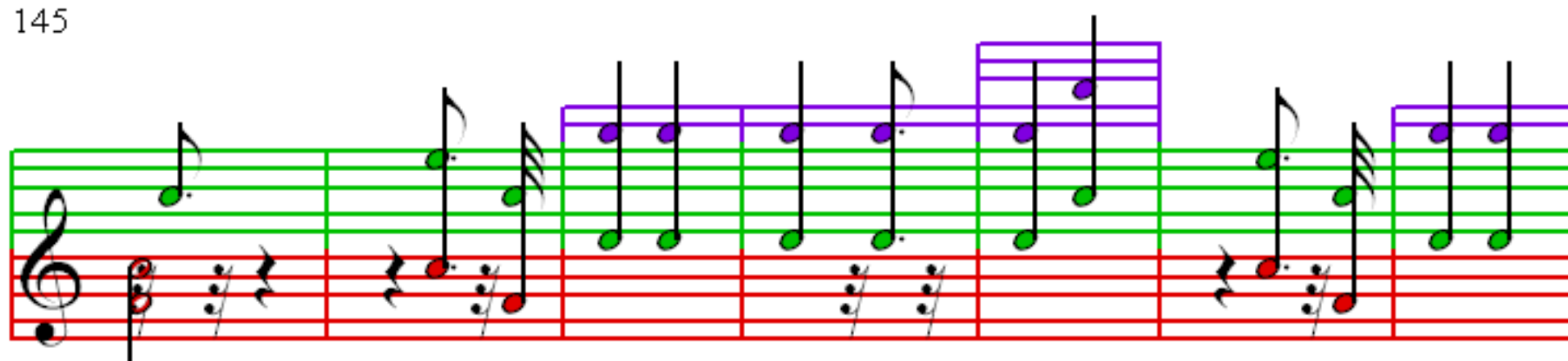
141



143



145



152

