

The Model

Kraftwerk

♩ = 140

1

4

8

12

The image displays a musical score for the song 'The Model' by Kraftwerk. The score is written for piano and is divided into four systems, each containing four measures. The first system is marked with a '1' above the first measure. The second system is marked with a '4' above the first measure. The third system is marked with an '8' above the first measure. The fourth system is marked with a '12' above the first measure. The score is written in 4/4 time, with a tempo of 140 beats per minute (♩ = 140). The key signature is one flat (B-flat). The melody is written in the treble clef, and the bass line is written in the bass clef. The notes are color-coded: red for the melody and blue for the bass line. The score includes various musical notations such as eighth notes, quarter notes, and rests. The first system shows a melodic line starting with a quarter note, followed by eighth notes, and a bass line with quarter notes. The second system shows a melodic line with a quarter note, followed by eighth notes, and a bass line with quarter notes. The third system shows a melodic line with a quarter note, followed by eighth notes, and a bass line with quarter notes. The fourth system shows a melodic line with a quarter note, followed by eighth notes, and a bass line with quarter notes.

16

Measures 16-19. Treble clef: Measure 16 has eighth-note runs (red, red, red, red, green, red, red). Measure 17 has a dotted half note (red). Measure 18 has a whole rest. Measure 19 has a whole rest. Bass clef: Measure 16 has chords (blue, blue, blue, blue). Measure 17 has eighth-note runs (blue, blue, blue, blue). Measure 18 has chords (red, red, red, red). Measure 19 has chords (blue, blue, blue, blue). Measure 18 has a green note in the treble.

20

Measures 20-23. Treble clef: Measure 20 has a half note (green). Measure 21 has a dotted half note (red). Measure 22 has a whole note (red). Measure 23 has a whole rest. Bass clef: Measure 20 has chords (blue, blue, blue, blue). Measure 21 has eighth-note runs (blue, blue, blue, blue) and an orange note in the bass. Measure 22 has eighth-note runs (blue, blue, blue, blue) and an orange note in the bass. Measure 23 has eighth-note runs (blue, blue, blue, blue) and an orange note in the bass.

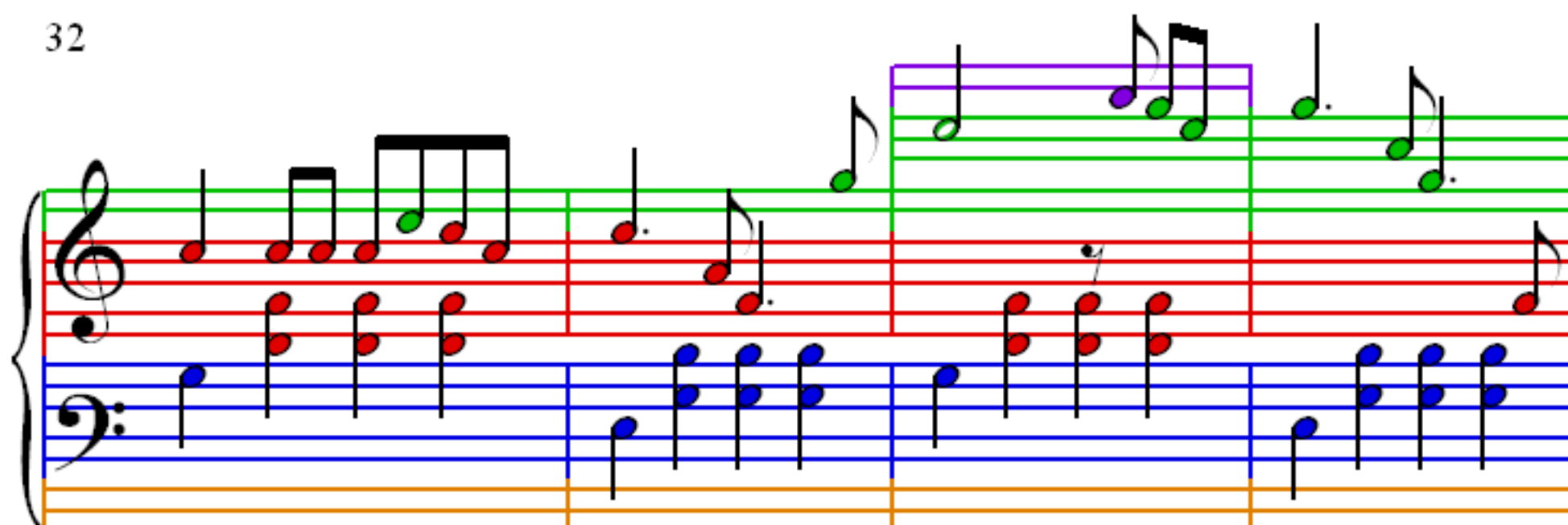
24

Measures 24-27. Treble clef: Measure 24 has a half note (green). Measure 25 has a whole note (red). Measure 26 has a whole note (green). Measure 27 has a half note (red). Bass clef: Measure 24 has chords (blue, blue, blue, blue). Measure 25 has eighth-note runs (blue, blue, blue, blue) and an orange note in the bass. Measure 26 has eighth-note runs (blue, blue, blue, blue). Measure 27 has eighth-note runs (blue, blue, blue, blue). Measure 26 has a green note in the treble.

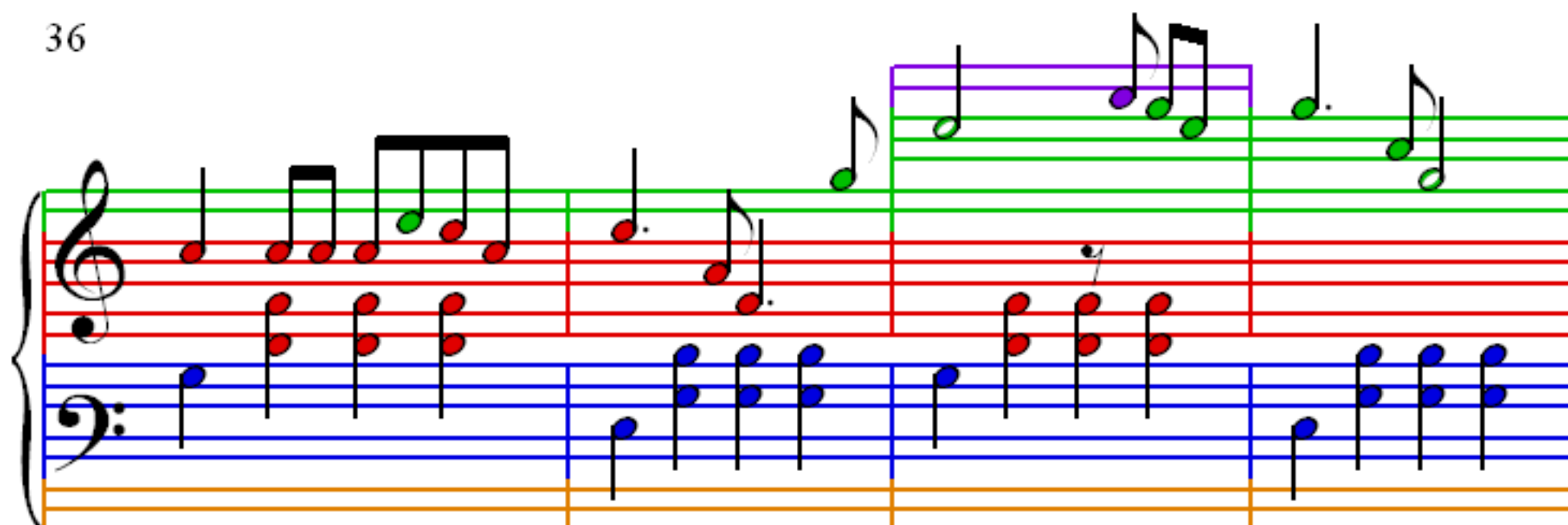
28

Measures 28-31. Treble clef: Measure 28 has eighth-note runs (red, red, red, red, green, red, red). Measure 29 has a dotted half note (red). Measure 30 has a dotted half note (green). Measure 31 has a dotted half note (green). Bass clef: Measure 28 has chords (blue, blue, blue, blue). Measure 29 has eighth-note runs (blue, blue, blue, blue). Measure 30 has chords (red, red, red, red). Measure 31 has chords (blue, blue, blue, blue). Measure 29 has a purple note in the treble.

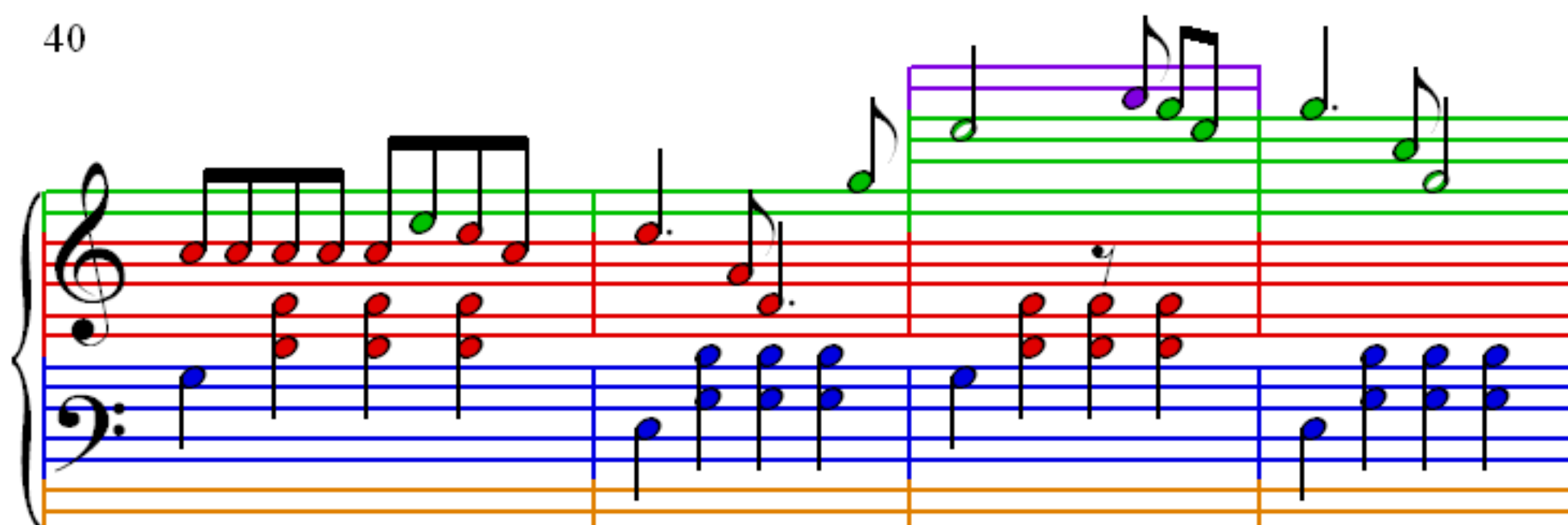
32



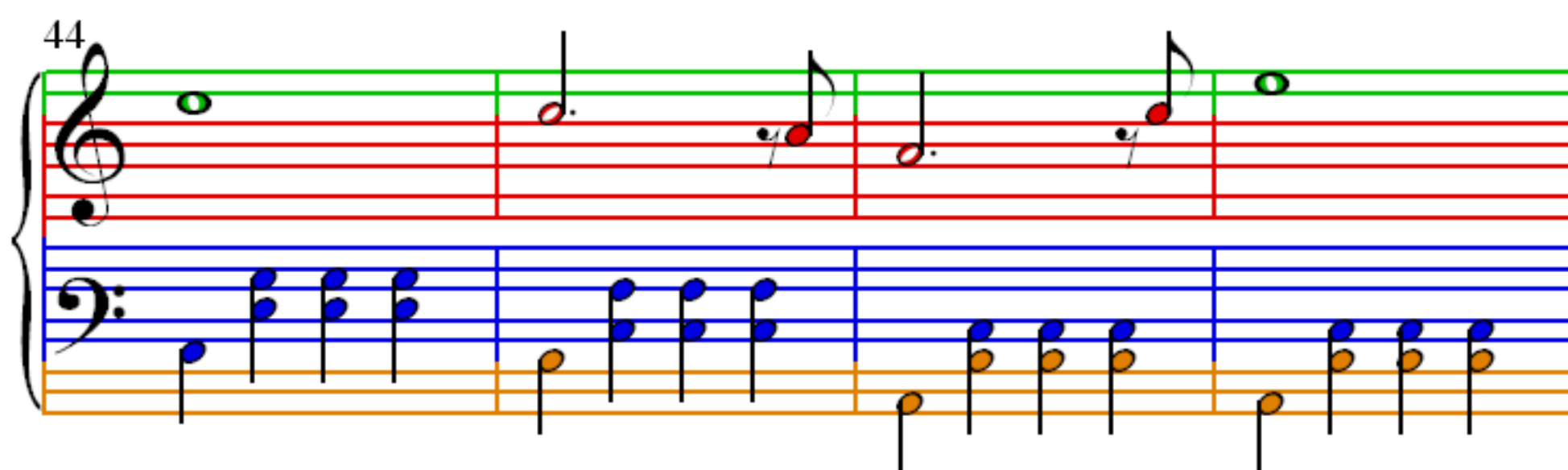
36



40



44



48

Measures 48-51. Treble clef: Measure 48 has a dotted quarter note and an eighth note. Measure 49 has a half note. Measure 50 has a half note. Measure 51 has a dotted quarter note and an eighth note. Bass clef: Continuous eighth-note accompaniment.

52

Measures 52-55. Treble clef: Continuous eighth-note melody. Bass clef: Continuous eighth-note accompaniment.

56

Measures 56-59. Treble clef: Continuous eighth-note melody. Bass clef: Continuous eighth-note accompaniment.

60

Measures 60-63. Treble clef: Measure 60 has a dotted quarter note and an eighth note. Measure 61 has a half note. Measure 62 has a dotted quarter note and an eighth note. Measure 63 has a half note. Bass clef: Continuous eighth-note accompaniment.

64

Measures 64-67 of a musical score. The treble clef staff (top) has a green line and a red line. The bass clef staff (bottom) has a blue line and an orange line. The music consists of a melody in the treble and a bass line in the bass. The melody starts with a quarter note, followed by a half note, and then a whole note. The bass line consists of a series of eighth notes and quarter notes. The music is in 4/4 time.

68

Measures 68-71 of a musical score. The treble clef staff (top) has a green line and a red line. The bass clef staff (bottom) has a blue line and an orange line. The music consists of a melody in the treble and a bass line in the bass. The melody starts with a quarter note, followed by a half note, and then a whole note. The bass line consists of a series of eighth notes and quarter notes. The music is in 4/4 time.

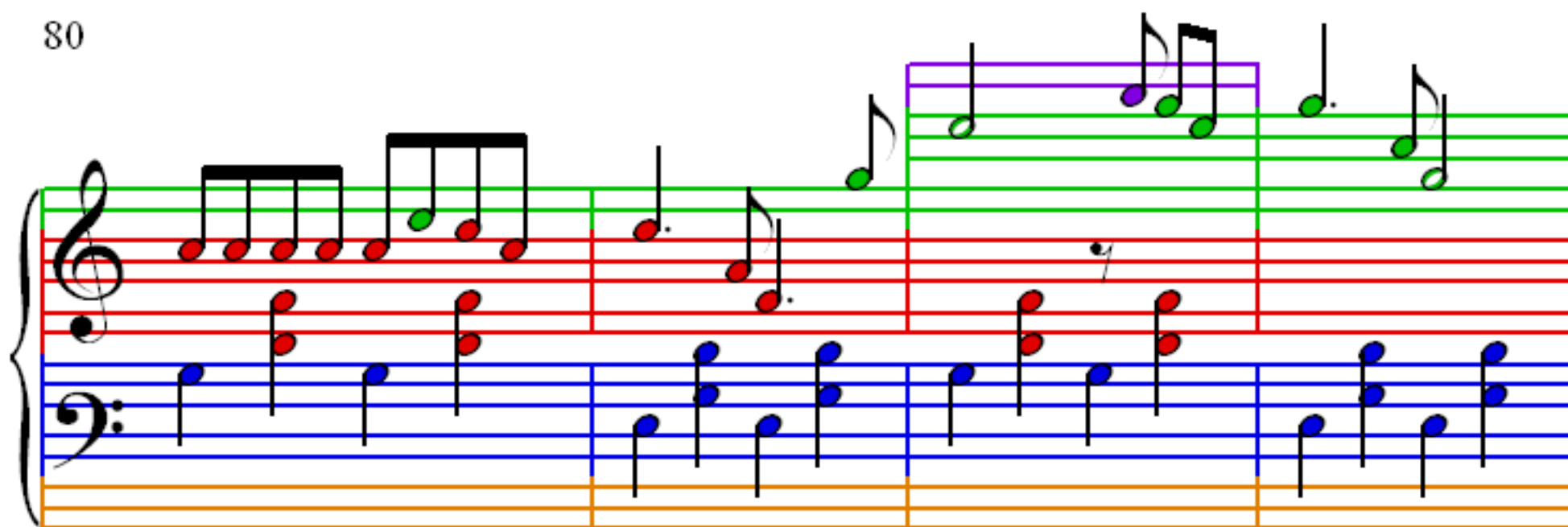
72

Measures 72-75 of a musical score. The treble clef staff (top) has a green line and a red line. The bass clef staff (bottom) has a blue line and an orange line. The music consists of a melody in the treble and a bass line in the bass. The melody starts with a quarter note, followed by a half note, and then a whole note. The bass line consists of a series of eighth notes and quarter notes. The music is in 4/4 time.

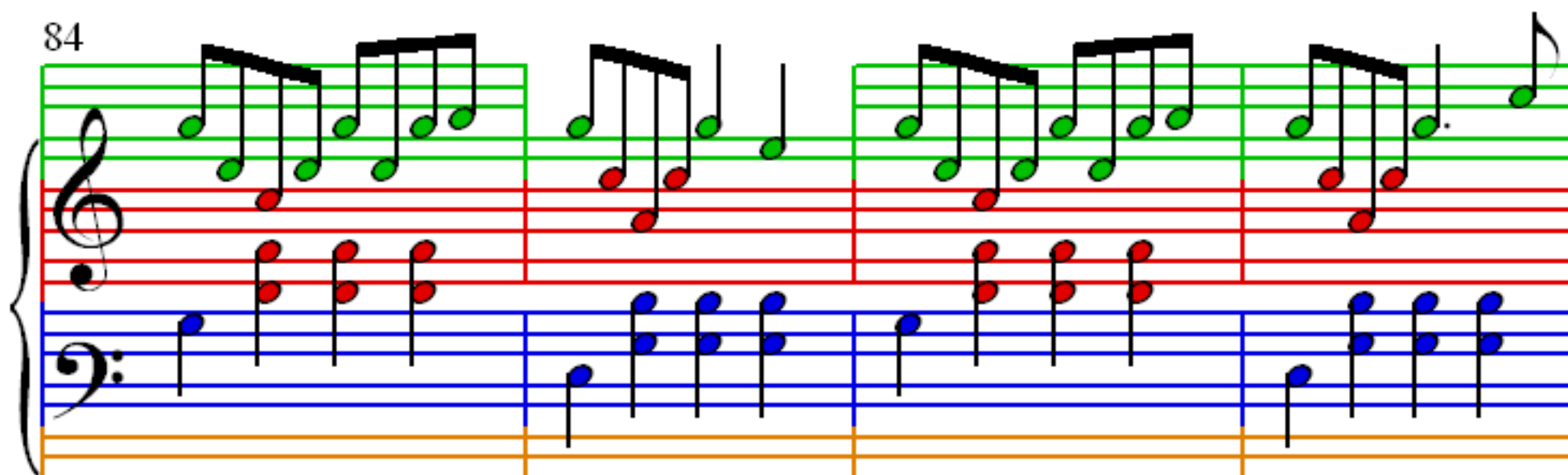
76

Measures 76-79 of a musical score. The treble clef staff (top) has a green line and a red line. The bass clef staff (bottom) has a blue line and an orange line. The music consists of a melody in the treble and a bass line in the bass. The melody starts with a quarter note, followed by a half note, and then a whole note. The bass line consists of a series of eighth notes and quarter notes. The music is in 4/4 time.

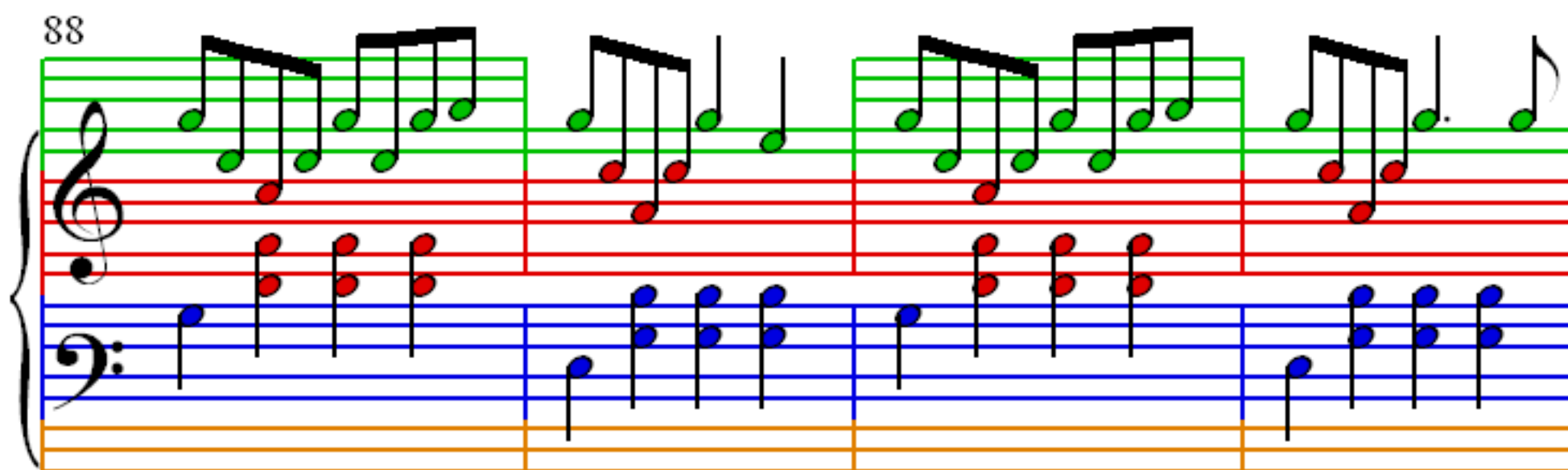
80



84



88



92

