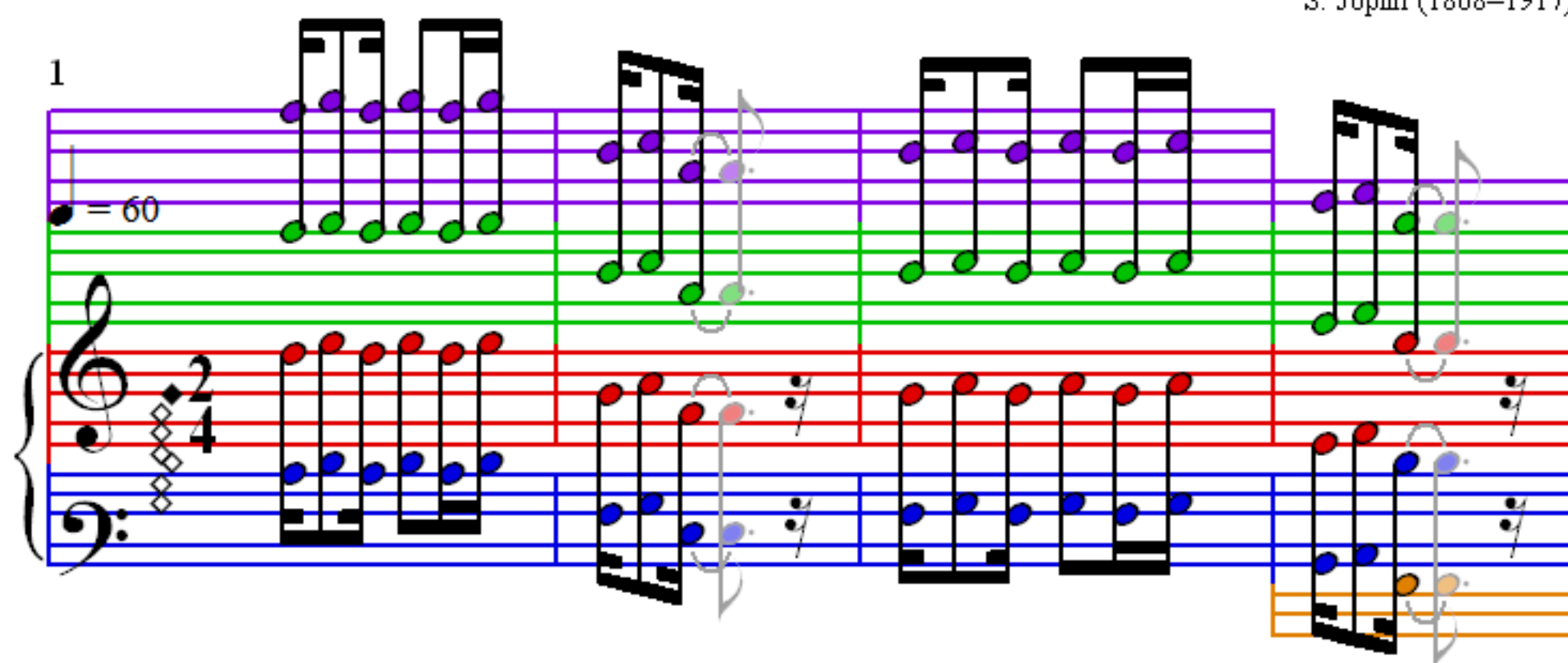


Original Rags

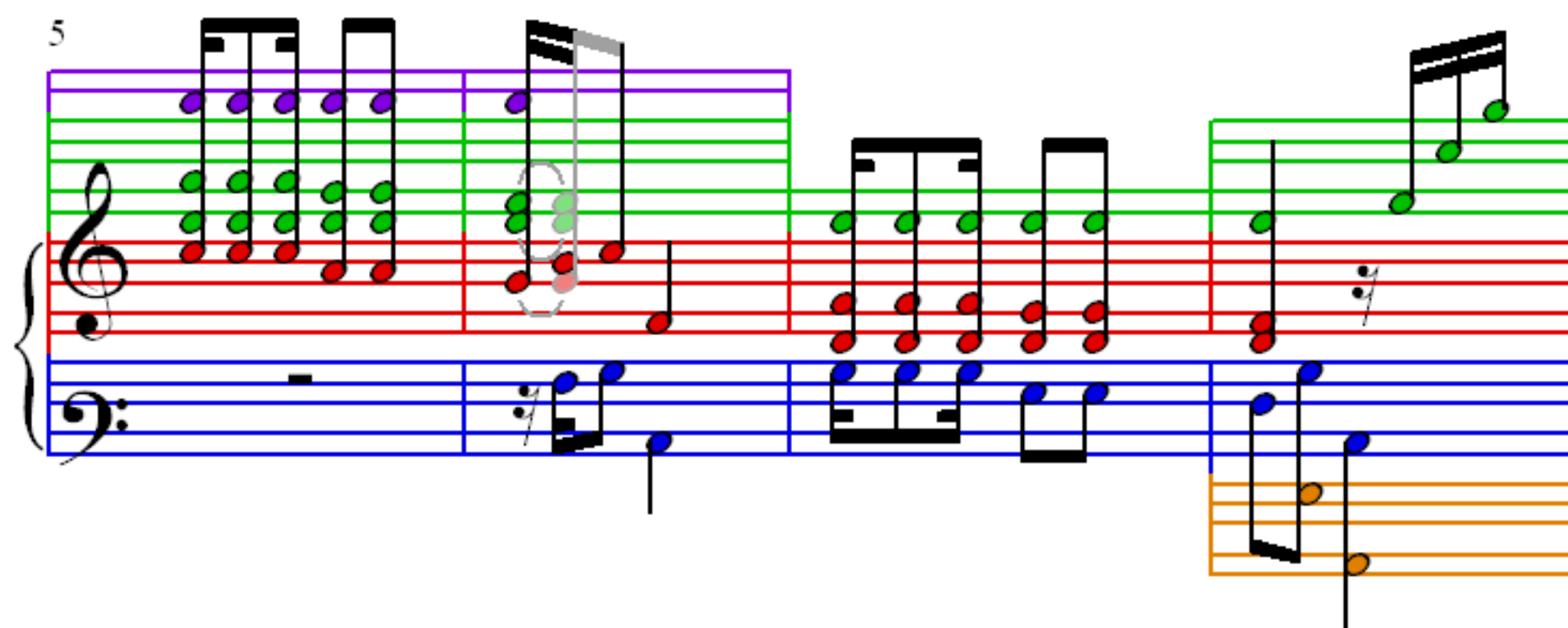
S. Joplin (1868–1917)

1

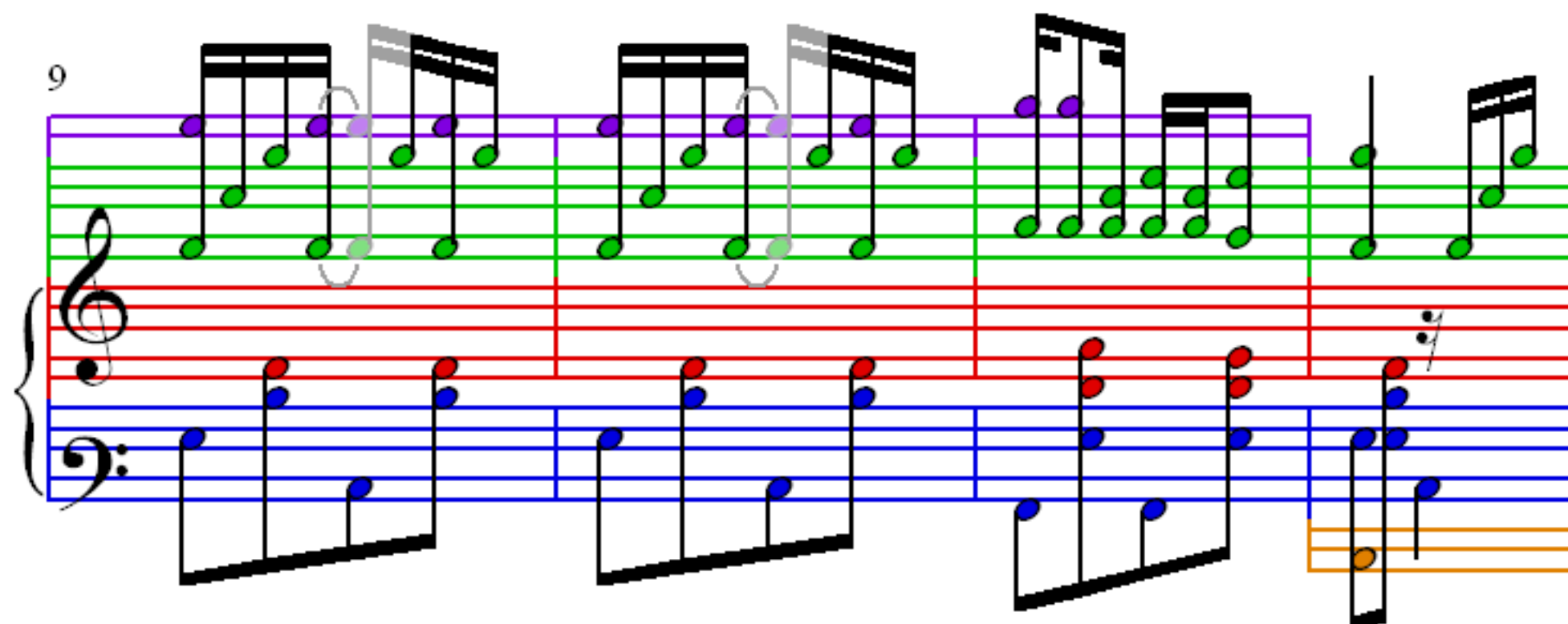
$\text{♩} = 60$



5



9



13

17

21

25

Measures 25-28. The treble clef staff has a green line and a red line. The bass clef staff has a blue line and a red line. The right hand plays a melody with green and red notes, while the left hand plays a bass line with blue and red notes. A grey bracket highlights a group of notes in the treble staff.

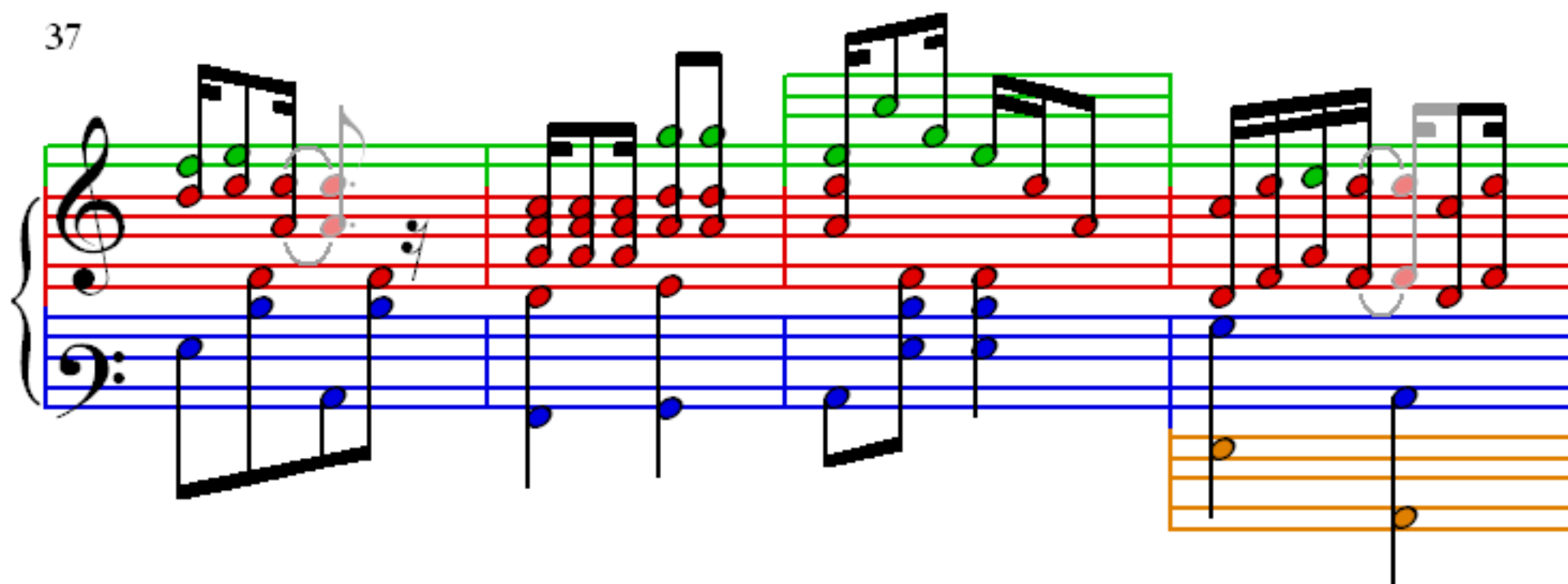
29

Measures 29-32. The treble clef staff has a green line and a red line. The bass clef staff has a blue line and a red line. The right hand plays a melody with green and red notes, while the left hand plays a bass line with blue and red notes. A grey bracket highlights a group of notes in the treble staff.

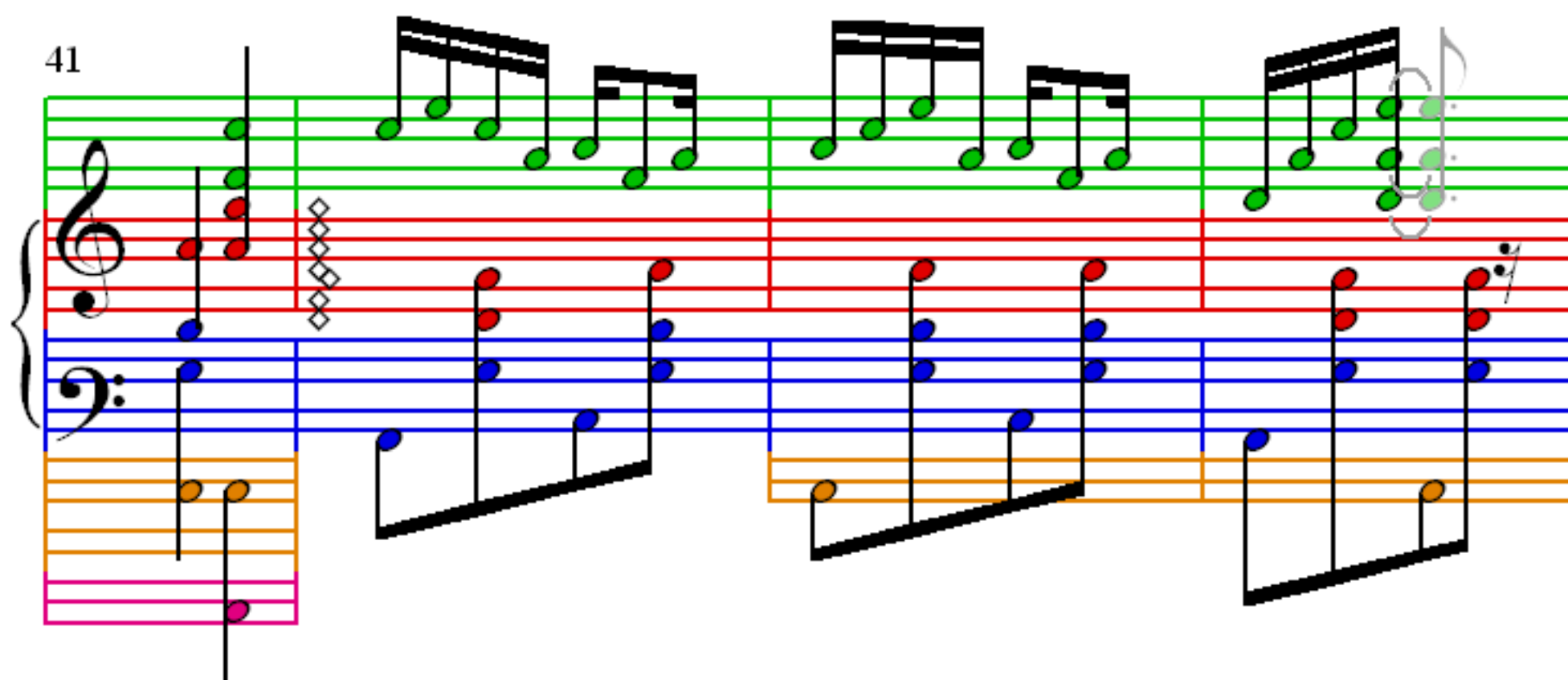
33

Measures 33-36. The treble clef staff has a green line and a red line. The bass clef staff has a blue line and a red line. The right hand plays a melody with green and red notes, while the left hand plays a bass line with blue and red notes. A grey bracket highlights a group of notes in the treble staff.

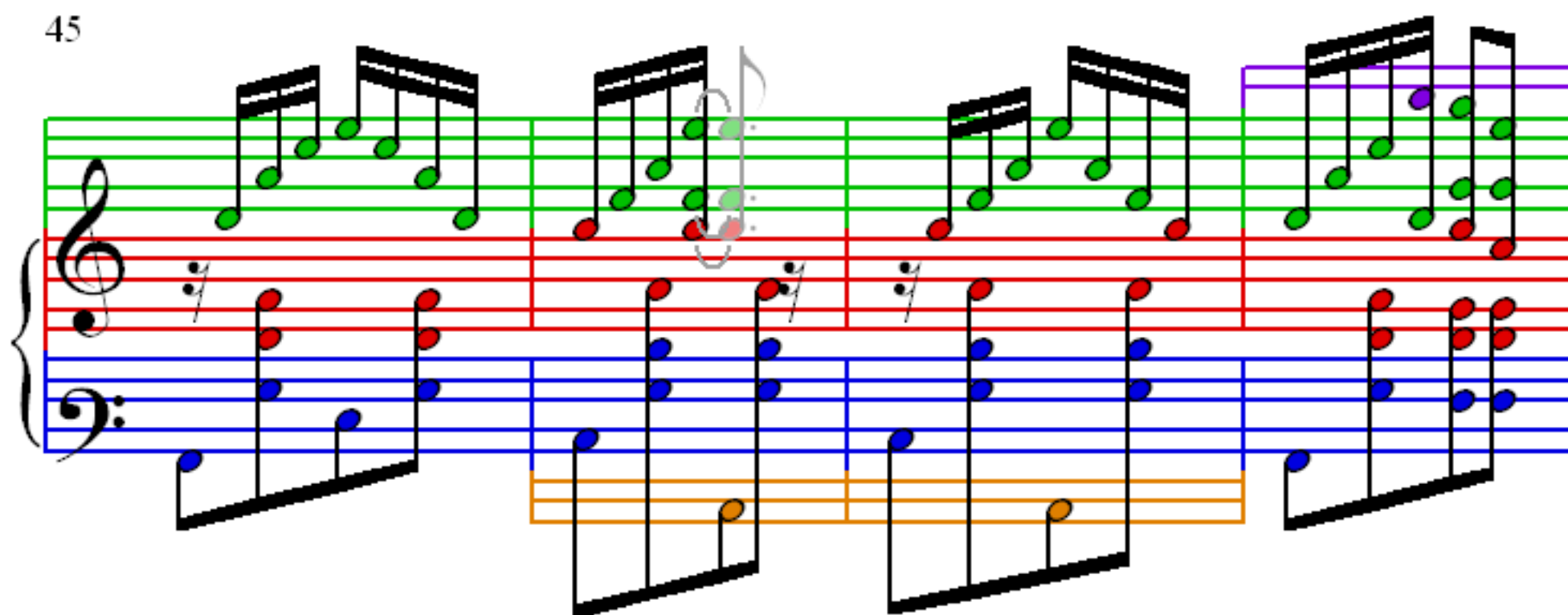
37



41



45



61

61

65

65

69

69

73

Measures 73-76 of a musical score. The score is written for piano, featuring a treble and bass staff. The treble staff has a purple key signature and a green treble clef. The bass staff has a blue bass clef. The notes are color-coded: green for the treble staff and blue for the bass staff. The music consists of eighth and sixteenth notes, with some beamed sixteenth notes. The measures are grouped by vertical bar lines.

77

Measures 77-80 of a musical score. The score is written for piano, featuring a treble and bass staff. The treble staff has a purple key signature and a green treble clef. The bass staff has a blue bass clef. The notes are color-coded: green for the treble staff and blue for the bass staff. The music consists of eighth and sixteenth notes, with some beamed sixteenth notes. The measures are grouped by vertical bar lines.

81

Measures 81-84 of a musical score. The score is written for piano, featuring a treble and bass staff. The treble staff has a purple key signature and a green treble clef. The bass staff has a blue bass clef. The notes are color-coded: green for the treble staff and blue for the bass staff. The music consists of eighth and sixteenth notes, with some beamed sixteenth notes. The measures are grouped by vertical bar lines.

85

Measures 85-88 of a musical score. The score is written for piano (p) and features a treble and bass staff. The treble staff has a key signature of one flat (B-flat) and a time signature of 4/4. The bass staff has a key signature of one flat (B-flat) and a time signature of 4/4. The music is written in a style that uses color-coding: green for the treble staff, red for the bass staff, and blue for the bass staff. The notes are color-coded: green for the treble staff, red for the bass staff, and blue for the bass staff. The notes are color-coded: green for the treble staff, red for the bass staff, and blue for the bass staff. The notes are color-coded: green for the treble staff, red for the bass staff, and blue for the bass staff.

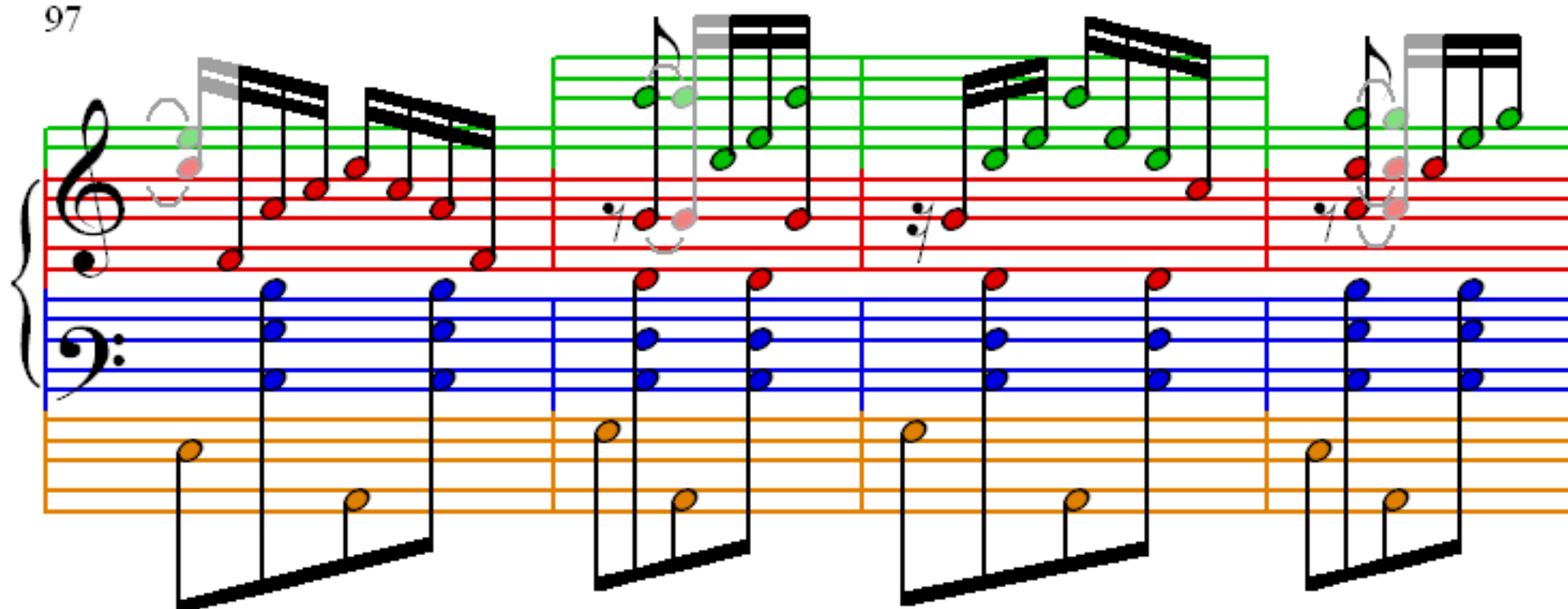
89

Measures 89-92 of a musical score. The score is written for piano (p) and features a treble and bass staff. The treble staff has a key signature of one flat (B-flat) and a time signature of 4/4. The bass staff has a key signature of one flat (B-flat) and a time signature of 4/4. The music is written in a style that uses color-coding: green for the treble staff, red for the bass staff, and blue for the bass staff. The notes are color-coded: green for the treble staff, red for the bass staff, and blue for the bass staff. The notes are color-coded: green for the treble staff, red for the bass staff, and blue for the bass staff. The notes are color-coded: green for the treble staff, red for the bass staff, and blue for the bass staff.

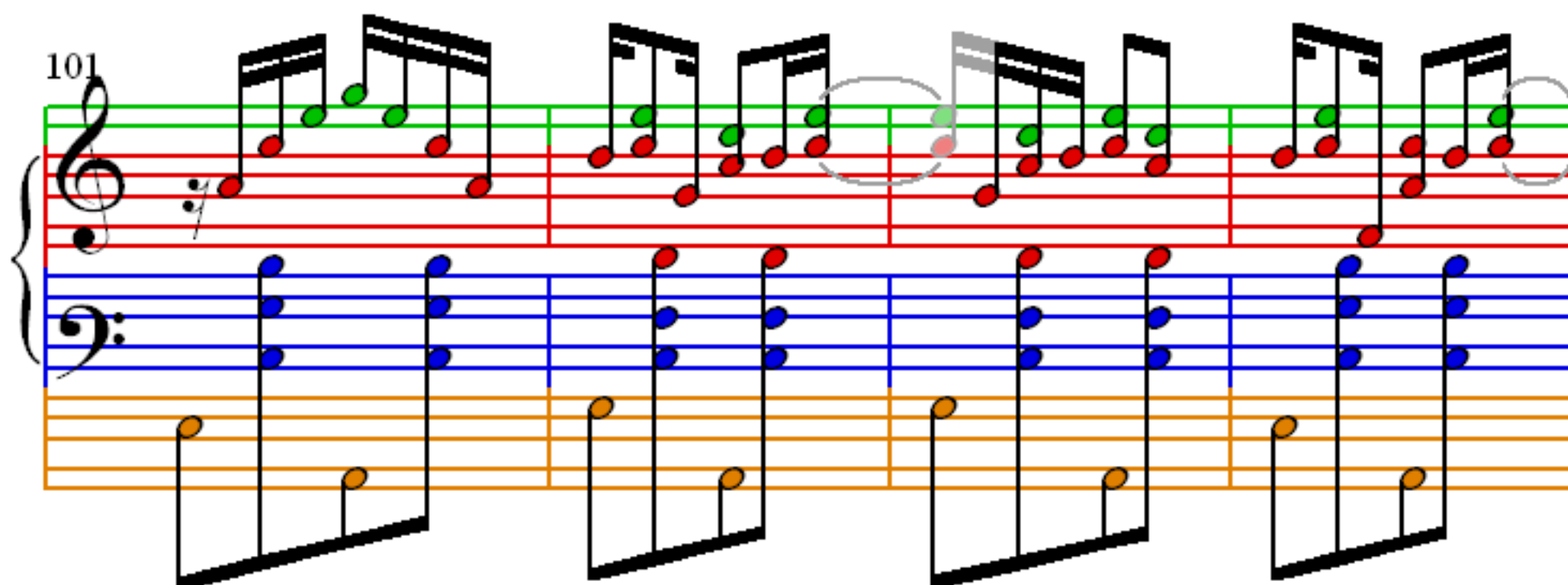
93

Measures 93-96 of a musical score. The score is written for piano (p) and features a treble and bass staff. The treble staff has a key signature of one flat (B-flat) and a time signature of 4/4. The bass staff has a key signature of one flat (B-flat) and a time signature of 4/4. The music is written in a style that uses color-coding: green for the treble staff, red for the bass staff, and blue for the bass staff. The notes are color-coded: green for the treble staff, red for the bass staff, and blue for the bass staff. The notes are color-coded: green for the treble staff, red for the bass staff, and blue for the bass staff. The notes are color-coded: green for the treble staff, red for the bass staff, and blue for the bass staff.

97



101



105

