

The Harlem Rag

T. Turpin (1873–1922)

♩ = 72

1

Measures 1-4 of the piece. The music is in 2/4 time. The treble clef staff has a key signature of one sharp (F#) and a common time signature of 2/4. The bass clef staff has a key signature of one sharp (F#). The melody in the treble clef consists of eighth and sixteenth notes, with some notes marked with green dots. The bass line consists of eighth and sixteenth notes, with some notes marked with blue dots. A small inset shows a single note on a five-line staff, with a green dot on the first line and a blue dot on the second line.

5

Measures 5-8 of the piece. The melody in the treble clef continues with eighth and sixteenth notes, with some notes marked with green dots. The bass line consists of eighth and sixteenth notes, with some notes marked with blue dots. A small inset shows a single note on a five-line staff, with a green dot on the first line and a blue dot on the second line.

9

Measures 9-12 of the piece. The melody in the treble clef continues with eighth and sixteenth notes, with some notes marked with green dots. The bass line consists of eighth and sixteenth notes, with some notes marked with blue dots. A small inset shows a single note on a five-line staff, with a green dot on the first line and a blue dot on the second line.

13

This system contains measures 13 through 16. The treble clef staff features a sequence of eighth-note chords, with some notes highlighted in green and others in red. The bass clef staff provides a harmonic foundation with blue and orange notes. The notation includes various musical symbols such as stems, beams, and slurs.

17

This system contains measures 17 through 20. The treble clef staff continues the melodic and harmonic development with eighth-note chords and some notes in green and red. The bass clef staff maintains the rhythmic and harmonic support with blue and orange notes. The notation includes various musical symbols such as stems, beams, and slurs.

21

This system contains measures 21 through 24. The treble clef staff shows a continuation of the eighth-note chord patterns, with some notes in green and red. The bass clef staff provides a steady harmonic base with blue and orange notes. The notation includes various musical symbols such as stems, beams, and slurs.

25

Handwritten musical notation for measures 25 through 28. The system consists of a grand staff with a treble clef (top) and a bass clef (bottom). The treble staff has a green line and a red line. The bass staff has a blue line and an orange line. The notation includes eighth and sixteenth notes, rests, and beams. The melody in the treble staff is primarily on the green line, while the bass line is primarily on the blue line. The piece is in 2/4 time.

29

Handwritten musical notation for measures 29 through 32. The system consists of a grand staff with a treble clef (top) and a bass clef (bottom). The treble staff has a green line and a red line. The bass staff has a blue line and an orange line. The notation includes eighth and sixteenth notes, rests, and beams. The melody in the treble staff is primarily on the green line, while the bass line is primarily on the blue line. The piece is in 2/4 time.

33

Handwritten musical notation for measures 33 through 36. The system consists of a grand staff with a treble clef (top) and a bass clef (bottom). The treble staff has a green line and a red line. The bass staff has a blue line and an orange line. The notation includes eighth and sixteenth notes, rests, and beams. The melody in the treble staff is primarily on the green line, while the bass line is primarily on the blue line. The piece is in 2/4 time.

37

This system contains measures 37 through 40. The treble clef staff features a series of chords, primarily triads and dyads, with notes colored green and red. The bass clef staff provides a harmonic accompaniment with notes in blue, orange, and pink. Measure 38 includes a fermata over a chord. Measure 39 features a complex chordal structure with a pink note in the bass. Measure 40 concludes the system with a final chordal figure.

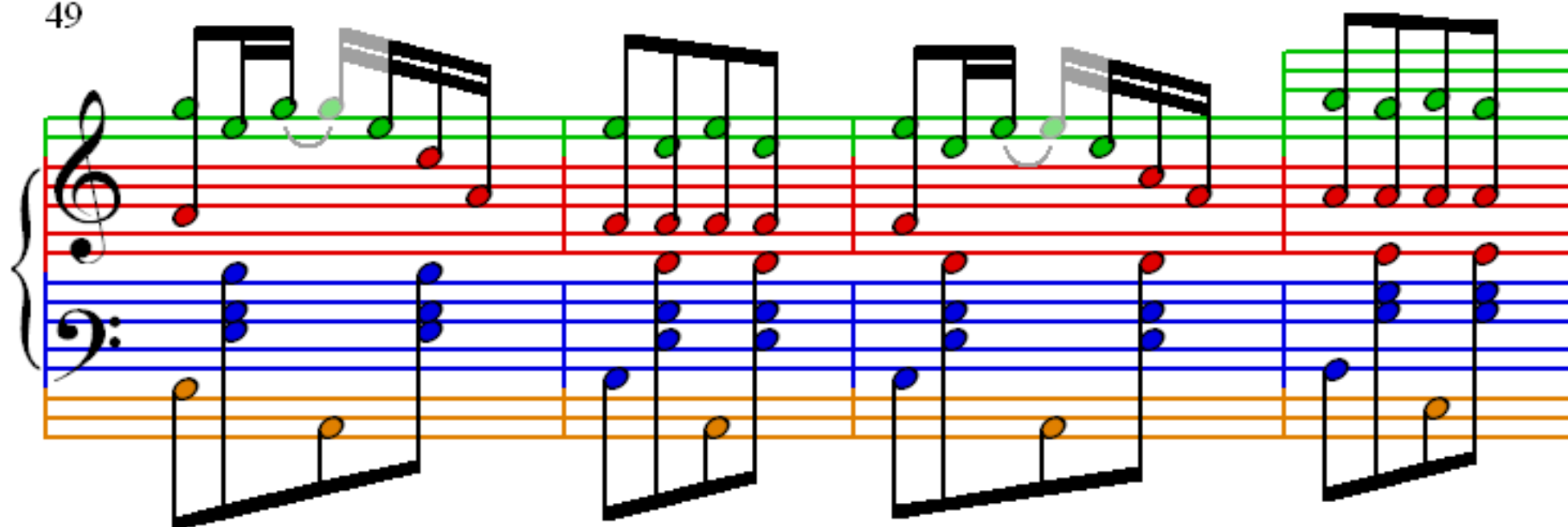
41

This system contains measures 41 through 44. The treble clef staff continues the chordal progression, with some notes highlighted in grey. The bass clef staff maintains the accompaniment pattern with blue, orange, and pink notes. Measure 42 and 44 show more complex chordal structures. Measure 43 features a fermata over a chord.

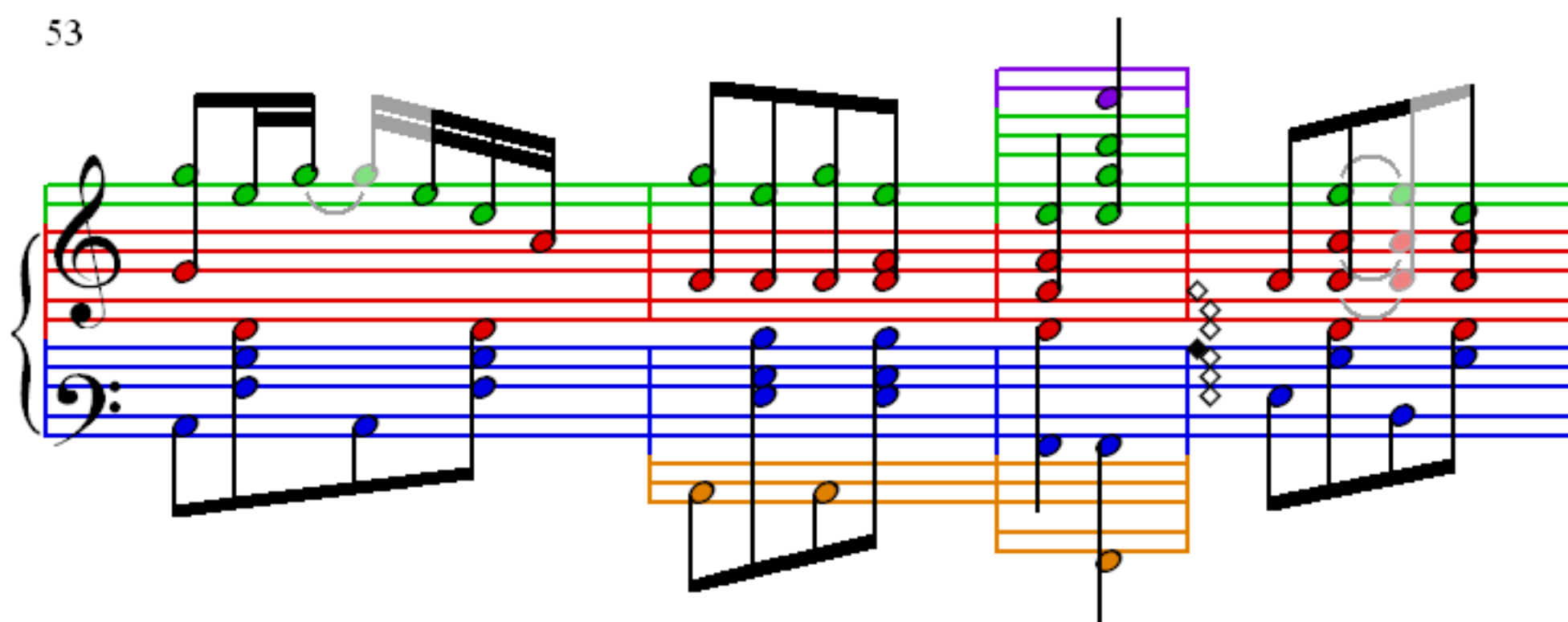
45

This system contains measures 45 through 48. The treble clef staff shows further development of the chordal material, with some notes in grey. The bass clef staff continues the accompaniment. Measure 46 and 48 feature more complex chordal structures. Measure 47 includes a fermata over a chord.

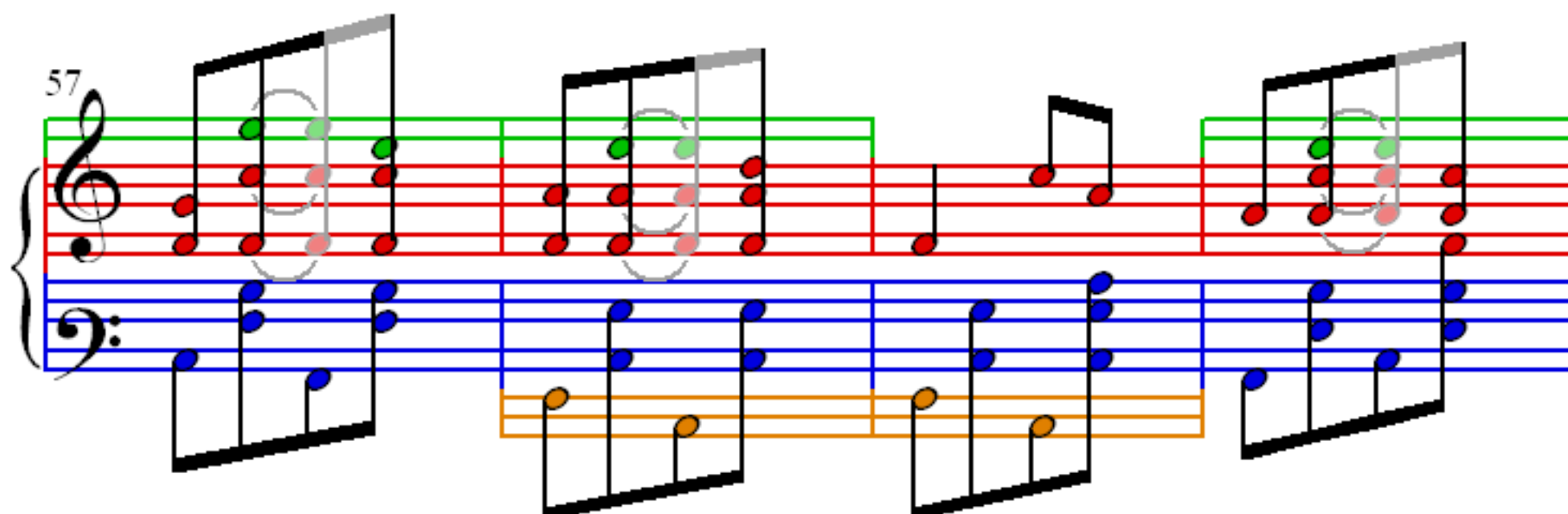
49



53



57



61

Measures 61-64 of the piano score for 'The Harlem Rag'. The system consists of a grand staff with a treble clef (red staves) and a bass clef (blue staves). The right hand plays a melody with eighth and sixteenth notes, while the left hand provides a harmonic accompaniment with chords and single notes. A green line highlights the melody in measures 63 and 64. A grey oval highlights a chord in the right hand of measure 64.

65

Measures 65-68 of the piano score. The notation continues with similar rhythmic patterns. A green line highlights the melody in measures 65 and 66. Grey ovals highlight chords in the right hand of measures 65, 66, and 68.

69

Measures 69-72 of the piano score. The notation continues with similar rhythmic patterns. A green line highlights the melody in measures 69, 70, and 71. A purple line highlights the melody in measure 72. Grey ovals highlight chords in the right hand of measures 70 and 72.

73

77

81

85

Measures 85-88 of the piano score for 'The Harlem Rag'. The system consists of a grand staff with a treble clef and a bass clef. The treble staff has a green background and contains a melodic line with eighth and sixteenth notes, some beamed together. The bass staff has a blue background and contains a bass line with eighth and sixteenth notes, some beamed together. A small orange box highlights the first two notes of the bass line in measure 87. The music is in 2/4 time and features a key signature of one flat (B-flat).

89

Measures 89-92 of the piano score for 'The Harlem Rag'. The system consists of a grand staff with a treble clef and a bass clef. The treble staff has a green background and contains a melodic line with eighth and sixteenth notes, some beamed together. The bass staff has a blue background and contains a bass line with eighth and sixteenth notes, some beamed together. A small purple box highlights the first two notes of the treble line in measure 89. The music is in 2/4 time and features a key signature of one flat (B-flat).

93

Measures 93-96 of the piano score for 'The Harlem Rag'. The system consists of a grand staff with a treble clef and a bass clef. The treble staff has a green background and contains a melodic line with eighth and sixteenth notes, some beamed together. The bass staff has a blue background and contains a bass line with eighth and sixteenth notes, some beamed together. A small purple box highlights the first two notes of the treble line in measure 93. The music is in 2/4 time and features a key signature of one flat (B-flat).

97

Measures 97-100 of the musical score. The score is written for piano in 2/4 time. The right hand (treble clef) features a melody with eighth and sixteenth notes, often beamed together. The left hand (bass clef) provides a rhythmic accompaniment with eighth and sixteenth notes. The notes are color-coded: red for the right hand and blue for the left hand. The staff lines are color-coded: red for the right hand and blue for the left hand. The key signature is one flat (B-flat major or D minor).

101

Measures 101-104 of the musical score. The right hand (treble clef) continues the melody with eighth and sixteenth notes. The left hand (bass clef) provides a rhythmic accompaniment. The notes are color-coded: red for the right hand and blue for the left hand. The staff lines are color-coded: red for the right hand and blue for the left hand. The key signature is one flat (B-flat major or D minor).

105

Measures 105-108 of the musical score. The right hand (treble clef) continues the melody with eighth and sixteenth notes. The left hand (bass clef) provides a rhythmic accompaniment. The notes are color-coded: red for the right hand and blue for the left hand. The staff lines are color-coded: red for the right hand and blue for the left hand. The key signature is one flat (B-flat major or D minor).

109

This system contains measures 109 through 112. The treble clef staff features a melody with notes colored green, purple, and red, often beamed in pairs. The bass clef staff provides accompaniment with blue and orange notes. Measures 109 and 111 include slanted bar lines, while measures 110 and 112 have straight bar lines. The system concludes with a double bar line.

113

This system contains measures 113 through 116. The treble clef staff continues the melody with green, red, and purple notes. The bass clef staff continues the accompaniment with blue and orange notes. Measures 113 and 115 have slanted bar lines, while measures 114 and 116 have straight bar lines. The system concludes with a double bar line.