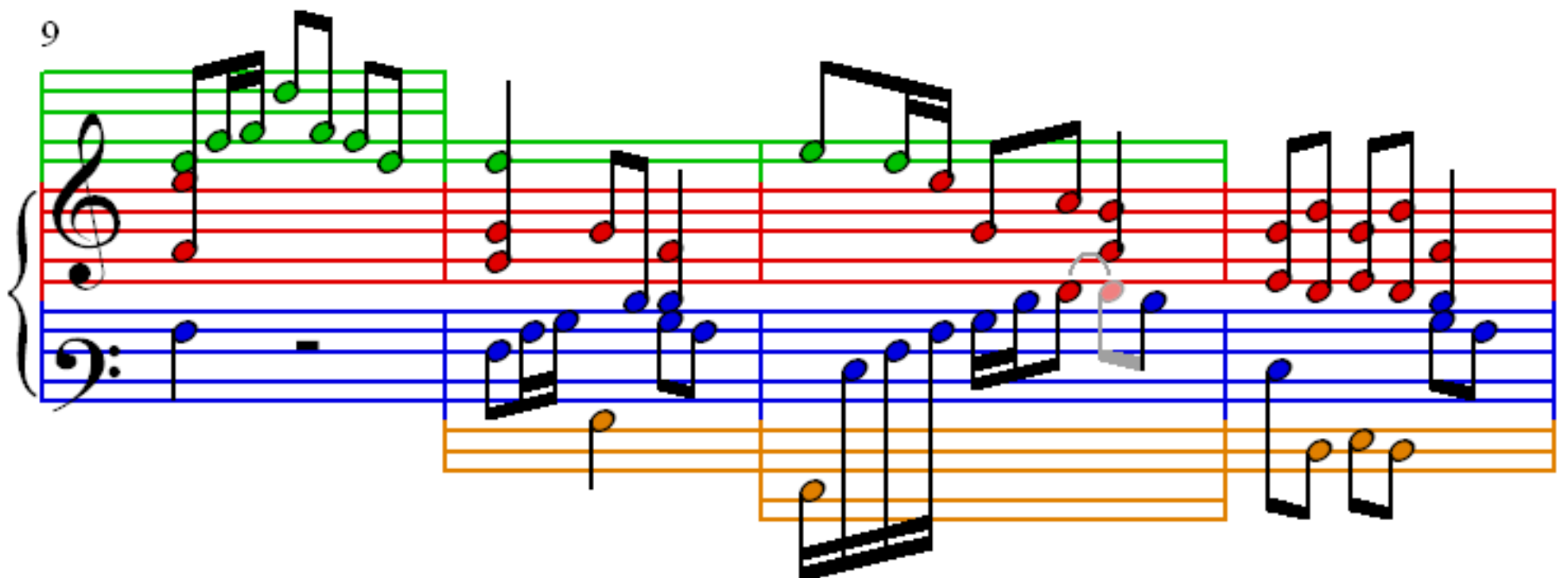
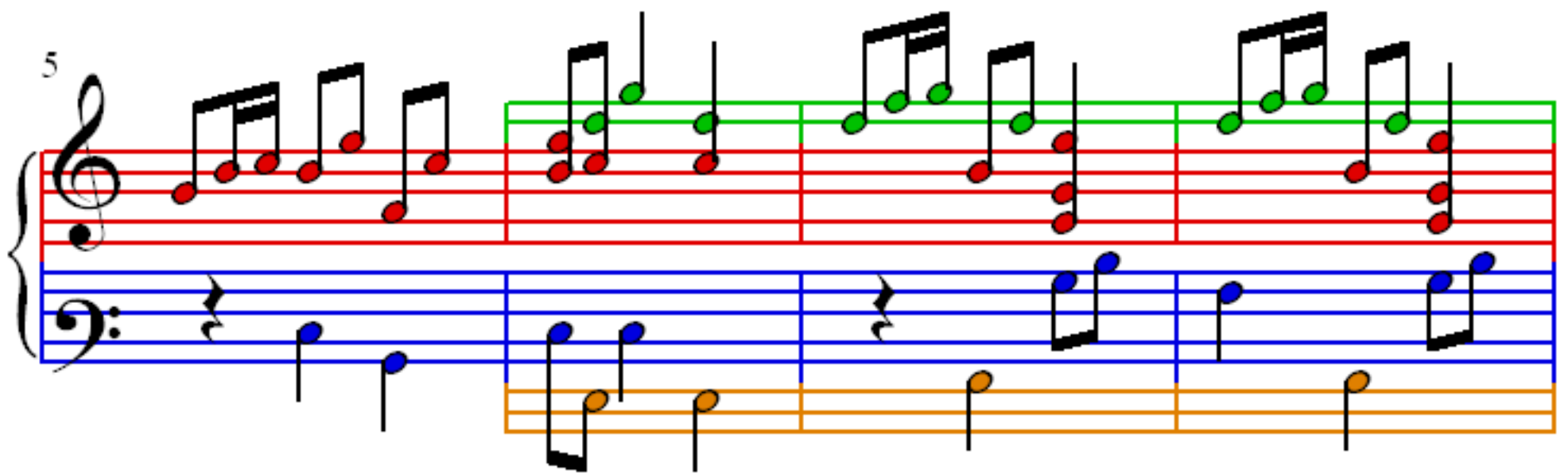
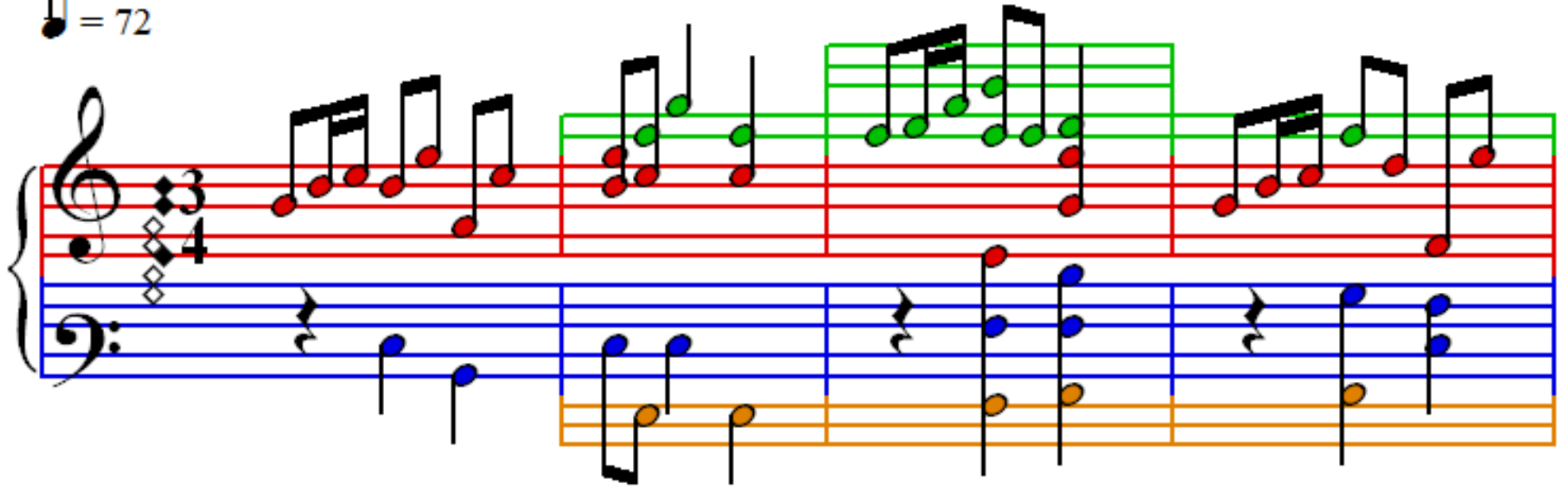
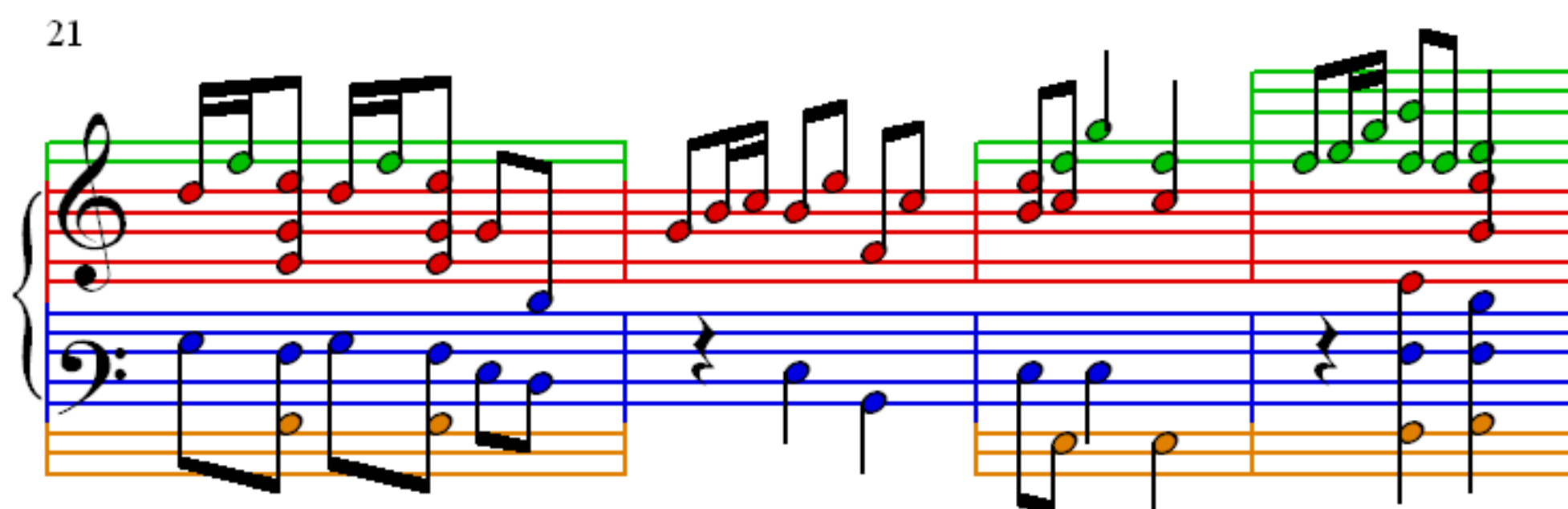
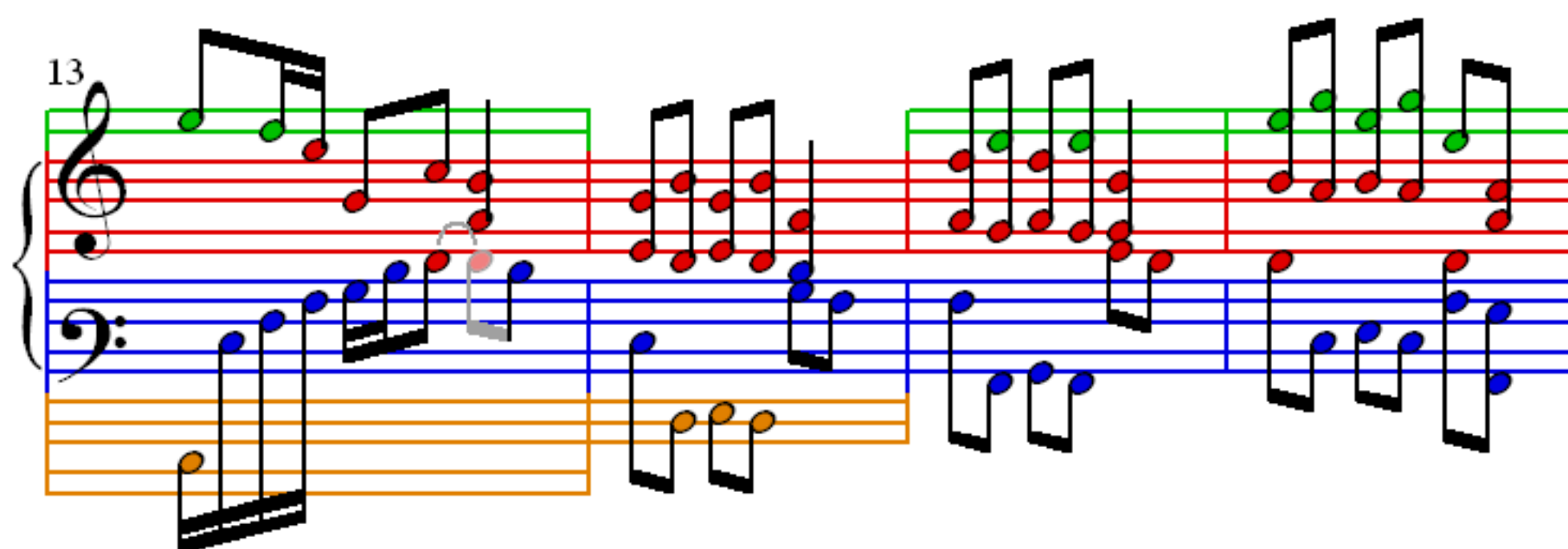


# The Seasons: January, op37.1

P. I. Tchaikovsky (1840–1893)

$\mathbf{1} = 72$



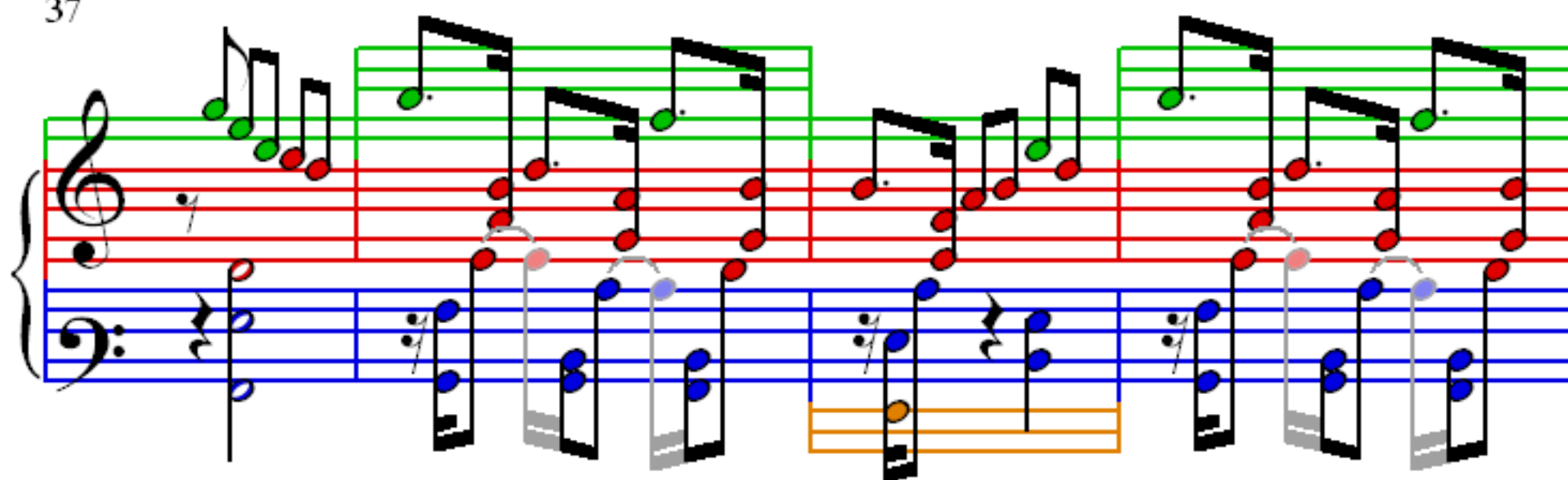


25

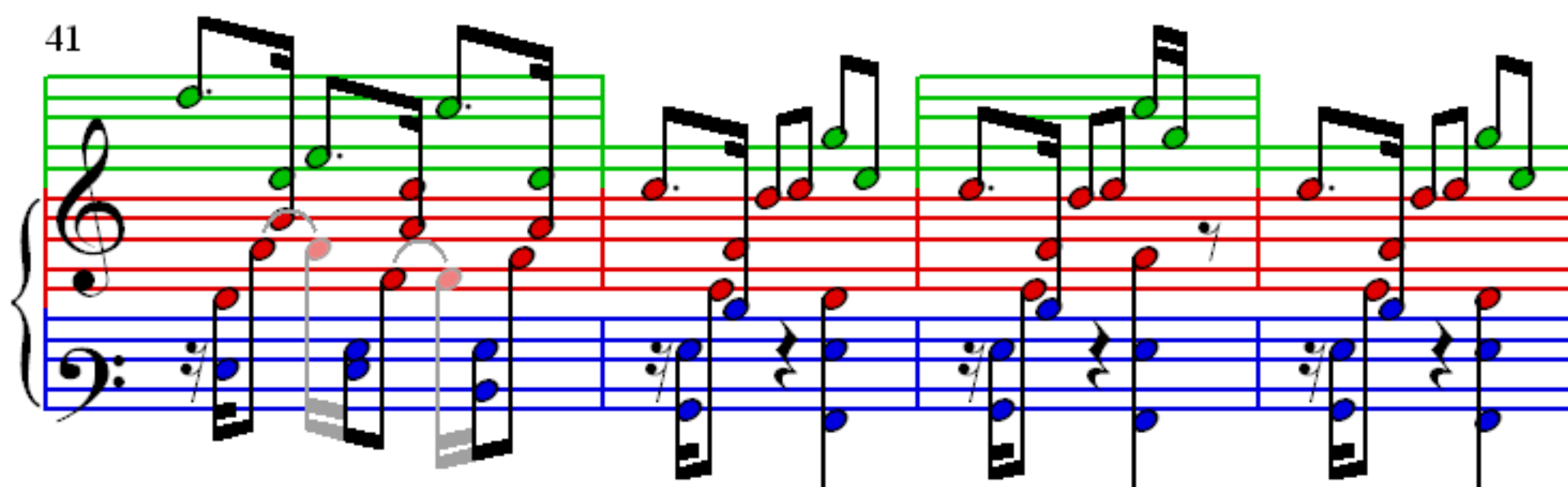
29

33

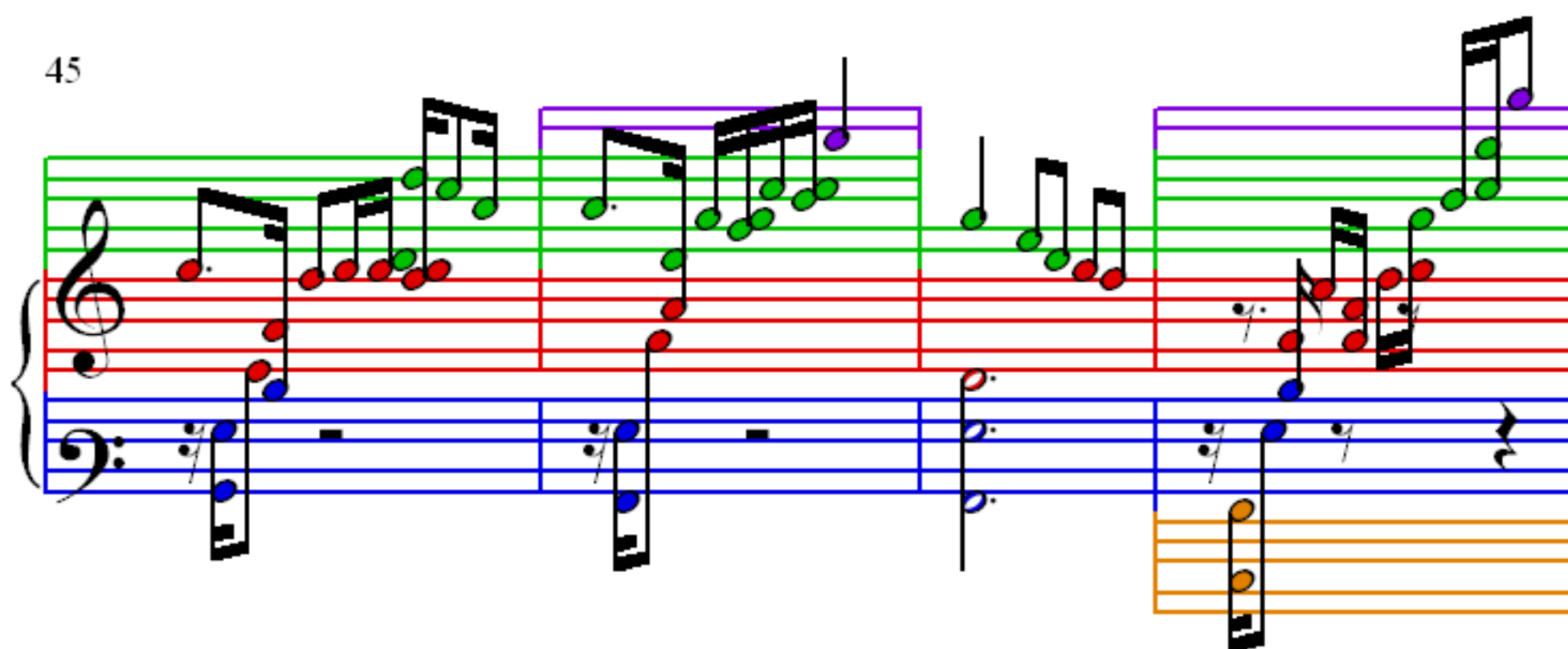
37

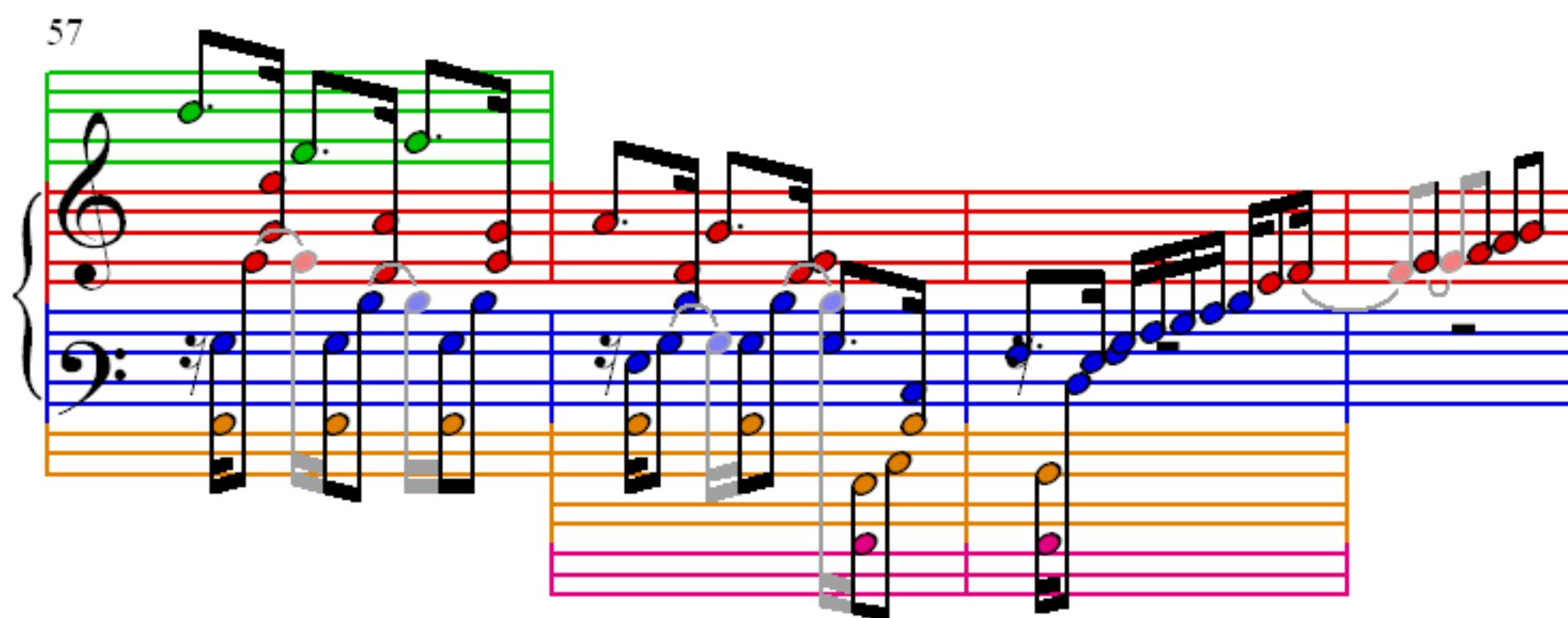
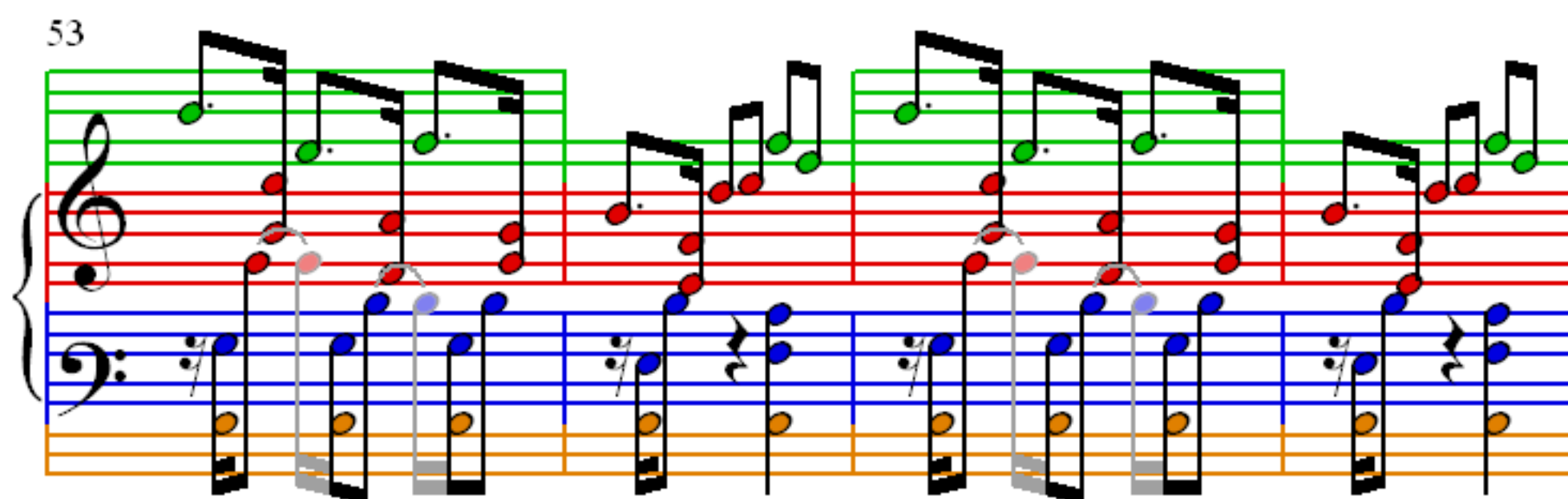
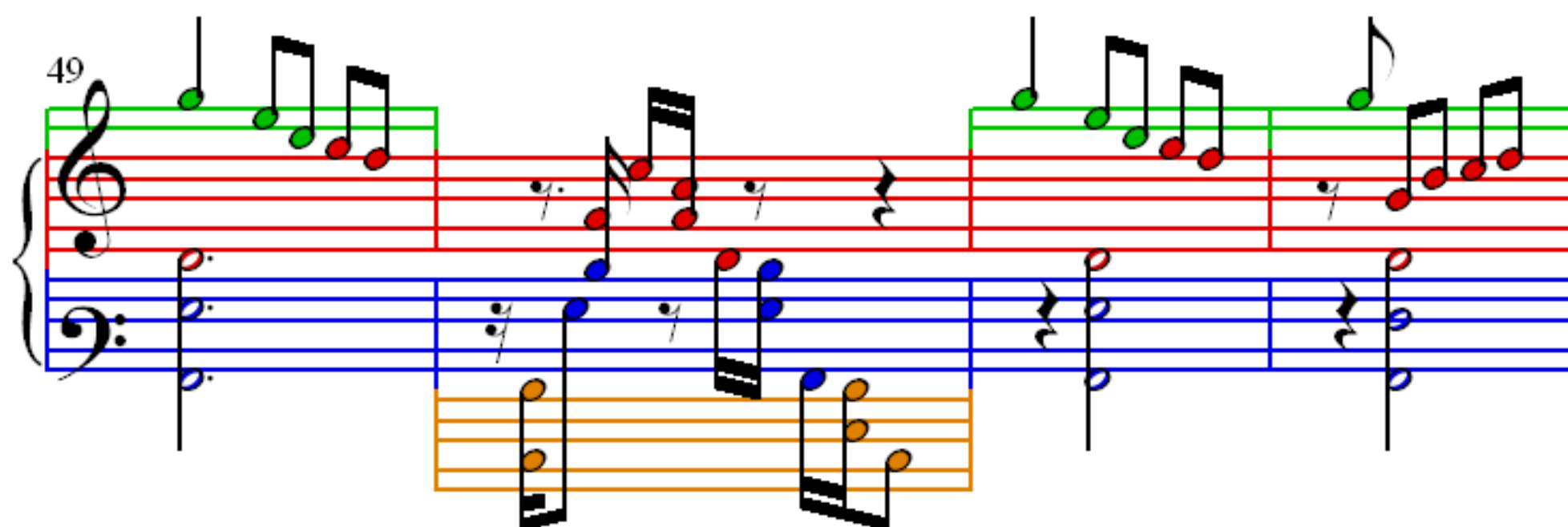


41

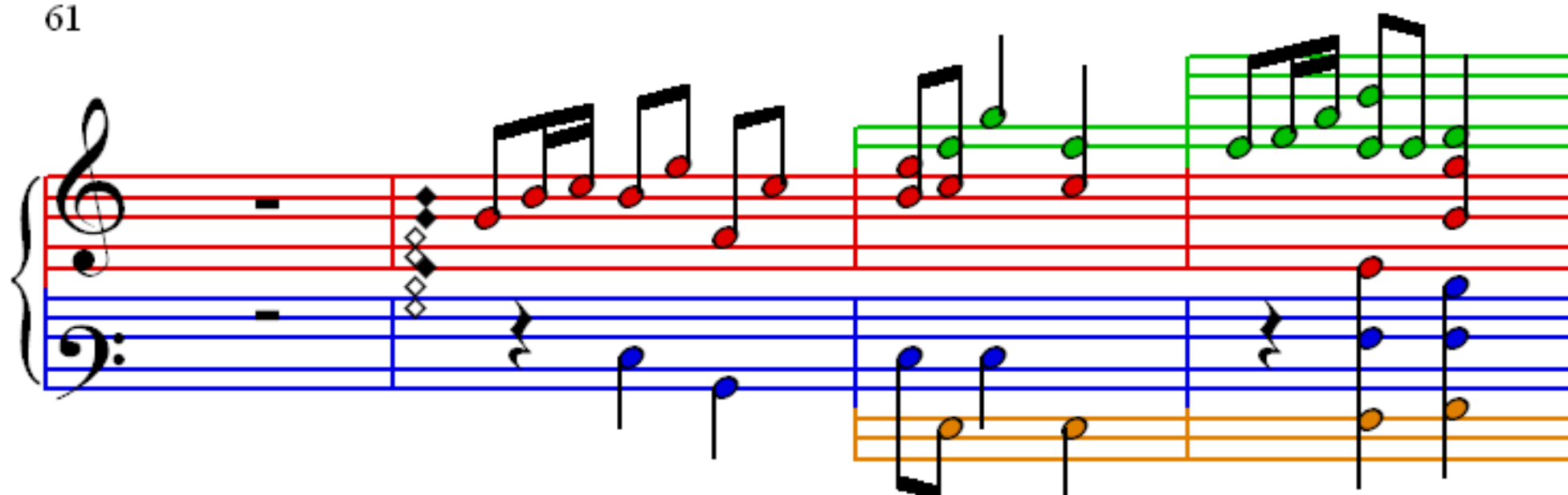


45

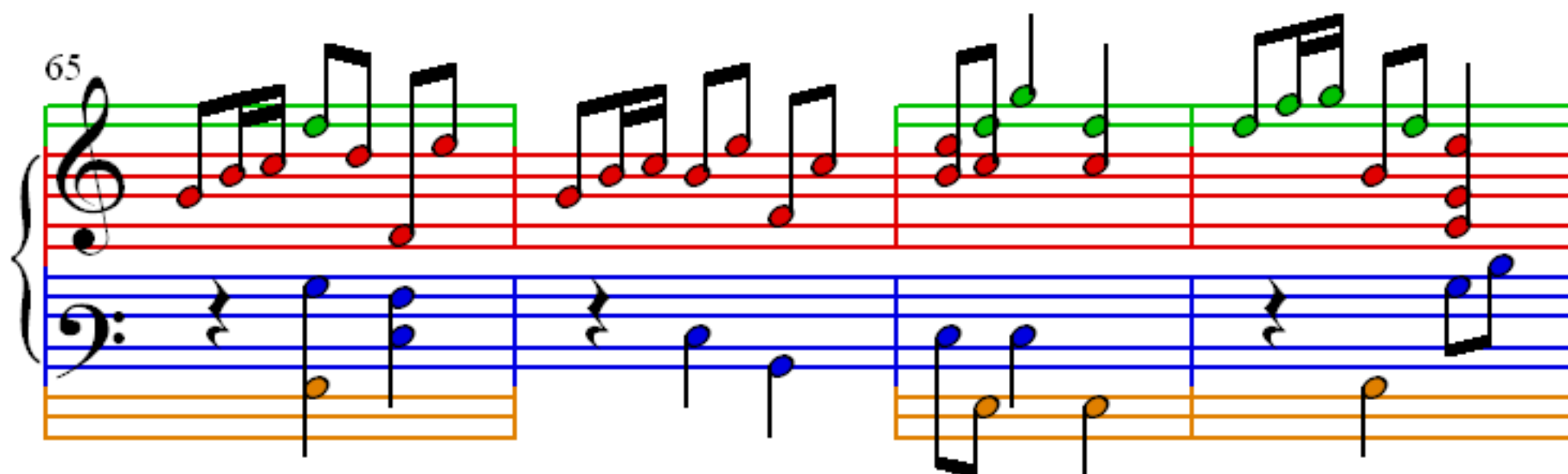




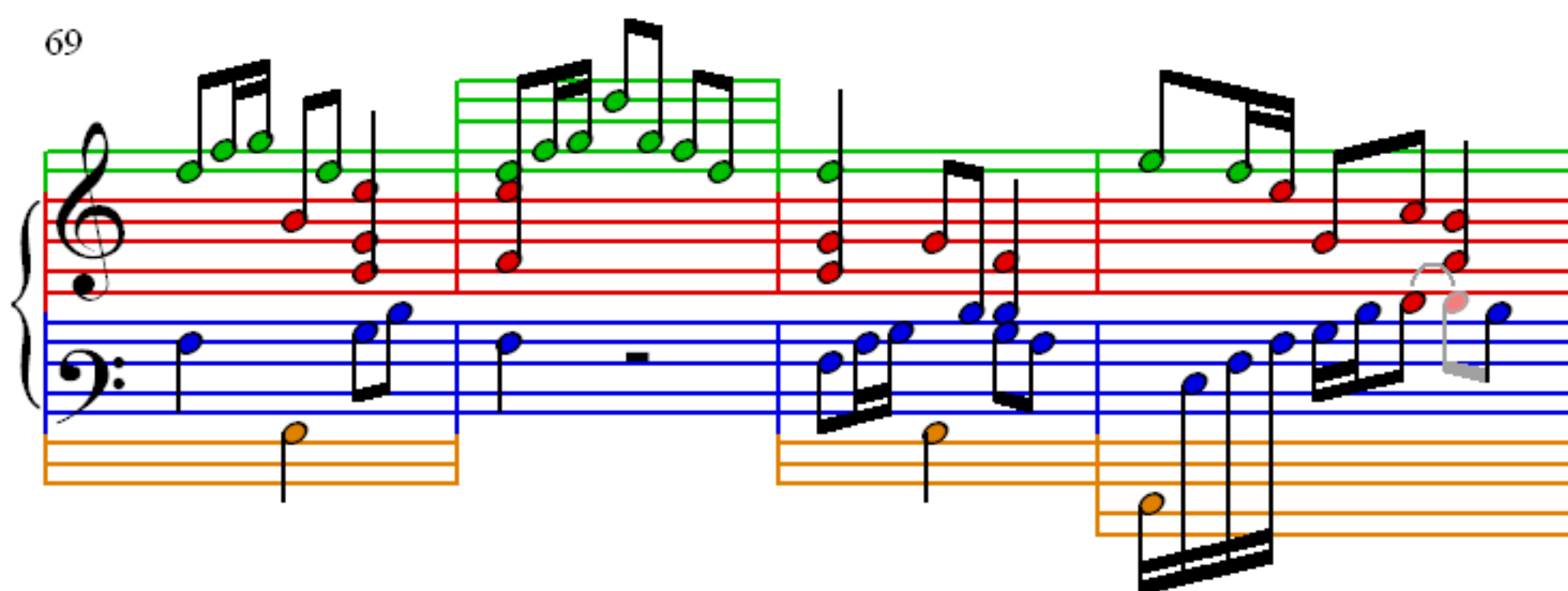
61



65



69



73

Measures 73-76. The treble staff has a green line at the top. The bass staff has a blue line at the top. The right hand plays a series of eighth notes, mostly on the red line. The left hand plays a series of eighth notes, mostly on the blue line. There are some accidentals and ties.

77

Measures 77-80. The treble staff has a green line at the top. The bass staff has a blue line at the top. The right hand plays a series of eighth notes, mostly on the red line. The left hand plays a series of eighth notes, mostly on the blue line. There are some accidentals and ties.

81

Measures 81-84. The treble staff has a green line at the top. The bass staff has a blue line at the top. The right hand plays a series of eighth notes, mostly on the red line. The left hand plays a series of eighth notes, mostly on the blue line. There are some accidentals and ties.

85

Measures 85-88. The treble staff has a green line at the top. The bass staff has a blue line at the top. The right hand plays a series of eighth notes, mostly on the red line. The left hand plays a series of eighth notes, mostly on the blue line. There are some accidentals and ties.



89

93

97

101