

Variations on a Russian Folk Song

Dmitri Kabalevsky

1

4

7

10

14

[illegible]

23

[illegible]

29

Exercise 29, measures 1-3. The score is written for piano on a grand staff. The right hand (treble clef) plays a sequence of notes: G4 (finger 2), A4 (finger 3), B4 (finger 1), and C5 (finger 5). The left hand (bass clef) plays a sequence of notes: G3 (finger 1), F3 (finger 2), E3 (finger 3), and D3 (finger 1). The notes are connected by a slur, indicating a continuous melodic line. The background is divided into three measures by vertical bar lines.

32

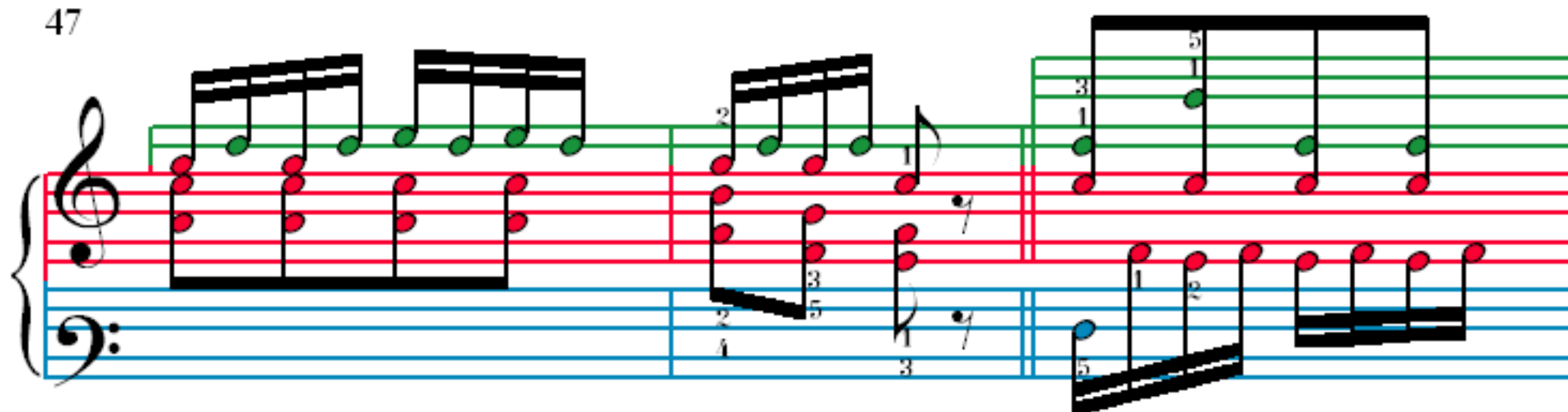
35

38

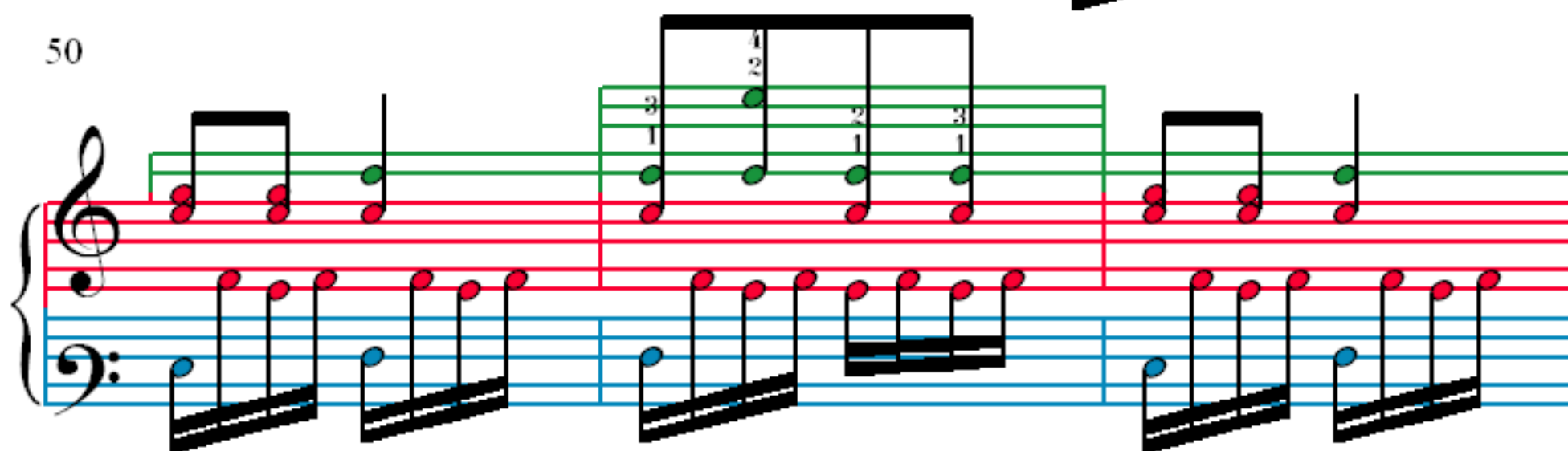
41

44

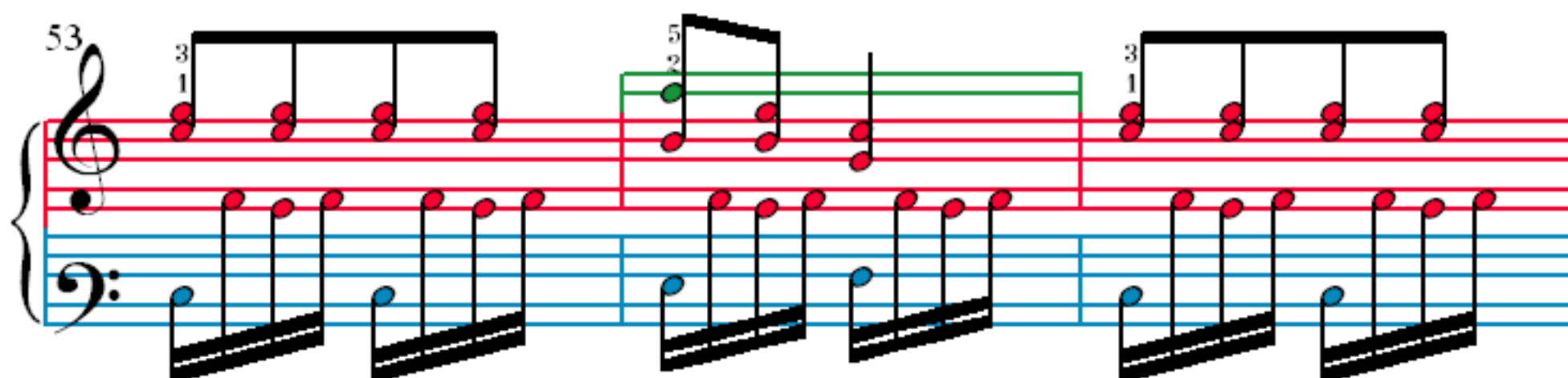
47



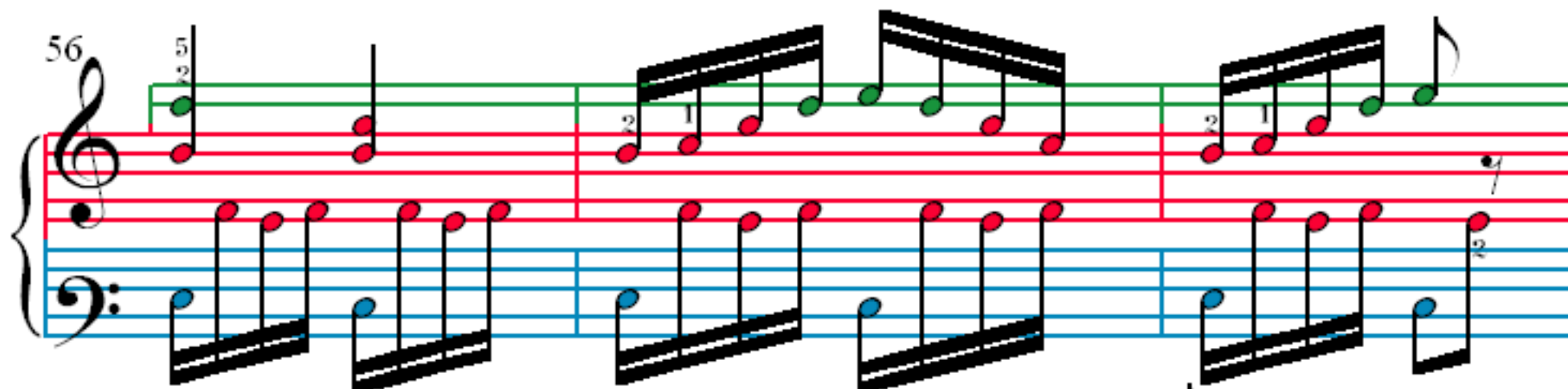
50



53



56



59

